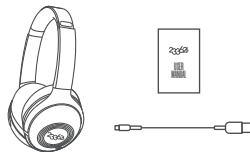


# 233621®

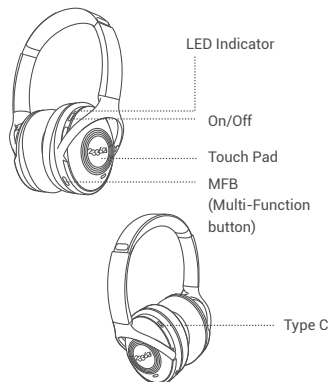
# Hush II

## USER MANUAL

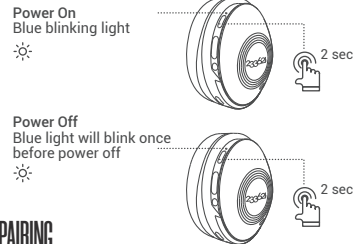
### WHAT'S IN THE BOX



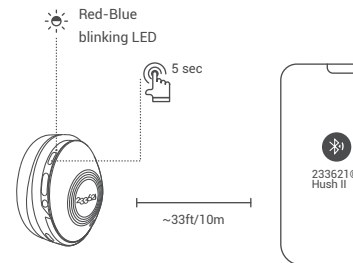
### THE PRODUCT



### ON/OFF



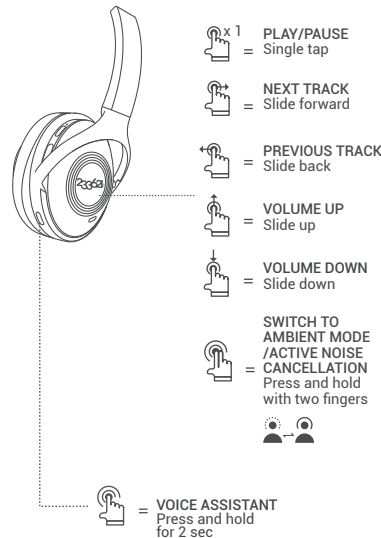
### PAIRING



Note:

- Method one: Press and hold On/Off button for 5 sec until the led blinks Blue and red to power on HUSH and activate the pairing mode.
- Method two : While the product is powered on double tap the On/Off button until the LED blinks Blue and red to activate the pairing mode.

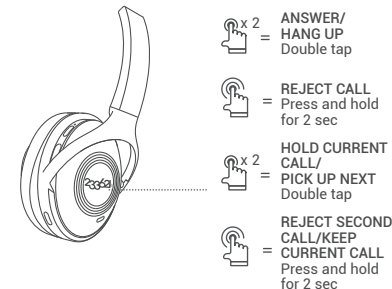
### PLAY MUSIC



Note:

Hybrid Noise Canceling technology optimize passive isolation which cancels noise in a wide audio frequency that let you experience smooth sound and provides you a quiet world of comfort.

### CALLS



### BATTERY INDICATION AND CHARGING



Note:

- 7Hybrid Noise Canceling technology optimize passive isolation which.
- cancels noise that let you experience.
- smooth sound and provides you a quiet.

SPECIFICATIONS

Type:	233621 Hush II
IC:	BES2300YP
Speaker size:	40mm speaker
microphone:	microphone *5
Support mode:	BT 5.0
Audio decoding:	SBC/AAC
Bluetooth frequency:	2.400GHZ—2.4835GHZ
Support agreement:	HFP 1.7, HSP 1.2, A2DP 1.3, AVRCP 1.6
Connection distance:	20M
Frequency response range:	20-20kHz
Call noise reduction:	BES dual mic call noise reduction
Product weight:	250g
Battery specifications:	1200mAh
Charging time:	3 hours Support fast charging
Headphone playback time:	60H (ANC ON)/70H (ANC OFF)
Charging input:	5V2A
Connection method:	Type-C charging cable

SAFETY AND HANDLING

1. Do not use this device in dusty, humid, dirty environment or places near magnetic field.
2. Keep an appropriate volume to avoid hearing damage.
3. Do not use this device while driving.
4. Keep the device away from heat sources like electric heaters, microwave ovens, stoves, water heaters, candles or any hot place.
5. Do not use a hair dryer or microwave to dry the device.
6. Please use the device and its accessories in 45°F~113°F/10°~ 45°C.  
When the environmental temperature is too high or too low, it may cause device stop working.
7. Keep the device and its accessories in a ventilated and cool place without direct sunlight.
8. This device is not a toy, and children must use this device under adult supervision.
9. This device and its accessories are not normal household garbage. Please deal with them according to the local laws and regulations.
10. Headphone is designed to charge using standard USB voltage (5v +- 0,25v). It is not recommended to charge product using power supplies/sources with higher voltage.

INFORMATIONAL NOTE FOR CUSTOMERS IN U.S.A. ONLY:

NOTE: This equipment has been tested and found to comply with the limits for a Class B digital device, pursuant to part 15 of the FCC Rules. These limits are designed to provide reasonable protection against harmful interference in a residential installation. This equipment generates uses and can radiate radio frequency energy and, if not installed and used in accordance with the instructions, may cause harmful interference to radio communications. However, there is no guarantee that interference will not occur in a particular installation. If this equipment does cause harmful interference to radio or television reception, which can be determined by turning the equipment off and on, the user is encouraged to try to correct the interference by one or more of the following measures:

- Reorient or relocate the receiving antenna.
- Increase the separation between the equipment and receiver.
- Connect the equipment into an outlet on a circuit different from that to which the receiver is connected.
- Consult the dealer or an experienced radio/TV technician for help

Changes or modifications not expressly approved by the party responsible for compliance could void the user's authority to operate the equipment. This device complies with Part 15 of the FCC Rules. Operation is subject to the following two conditions:

- ① this device may not cause harmful interference
- ② this device must accept any interference received, including interference that may cause undesired operation.



RF warning statement:  
The device has been evaluated to meet general RF exposure requirement. The device can be used in portable exposure condition without restriction.

INFORMATIONAL NOTE FOR CUSTOMERS IN EU ONLY:

This device has been manufactured by or on behalf of SHENZHEN GRANDSUN ELECTRONIC CO., LTD. Hereby, SHENZHEN GRANDSUN ELECTRONIC CO., LTD. Declares that this device is in compliance with Directive 2014/53/EU



This symbol on the device, the battery or on the packaging indicates that the device and the battery shall not be treated as household waste. By ensuring these devices and batteries are disposed of correctly, you will help prevent potentially negative consequences for the environment and case of devices that for safety, performance or data integrity reasons require a permanent connection with an incorporated battery, this battery should be replaced by qualified service staff only. To ensure that the battery and the electrical and electronic device will be treated properly, hand over these devices at end-of-life to the applicable collection point for the recycling of electrical and electronic device. Hand the battery over to the applicable collection point for the recycling of waste batteries. For more detailed information about recycling of this device or battery, please contact your local Civic Office, your household waste disposal service or the dealer. This symbol is only valid in the European Union.

TRADEMARKS

1. The Bluetooth® word mark and logos are registered trademarks owned by Bluetooth SIG. Inc. And any use of such marks by SHENZHEN GRANDSUN ELECTRONIC CO., LTD. is under license.
2. "233621" word mark and logos are registered trademarks of SHENZHEN GRANDSUN ELECTRONIC CO., LTD. Reproduction in whole or in part without written permission is prohibited. Other companies and products mentioned herein are trademarks of their respective owners.

Made in China.

233621 WARRANTY

1. The device is guaranteed for 12 months from the date of purchase. Repair and maintenance service are free during period.
2. The warranty limitation:  
a, Man-made damage;  
b, Beyond the Warranty period;  
c, Accessories damage due to improper use and maintenance;  
d, Disassemble the device without manufacturer authority;
3. Service Information  
233621 Website:  
www.thenumberbrand.com

THANK  
YOU