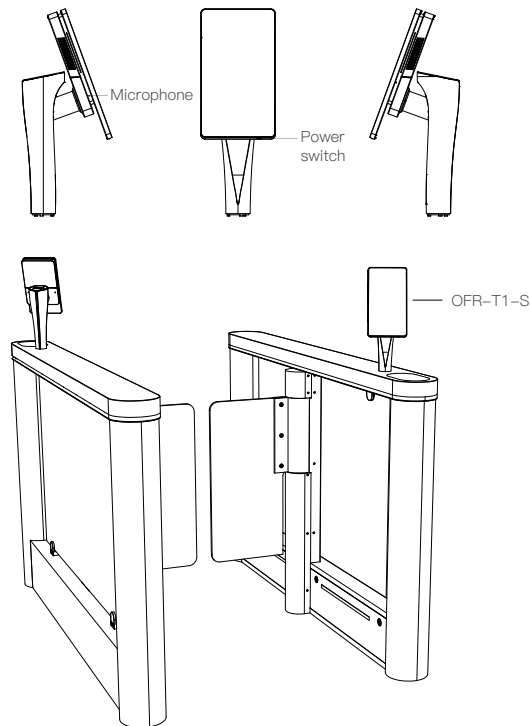
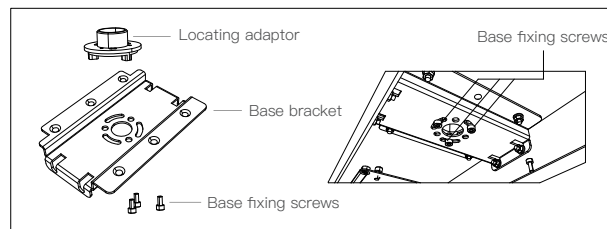


Outlook

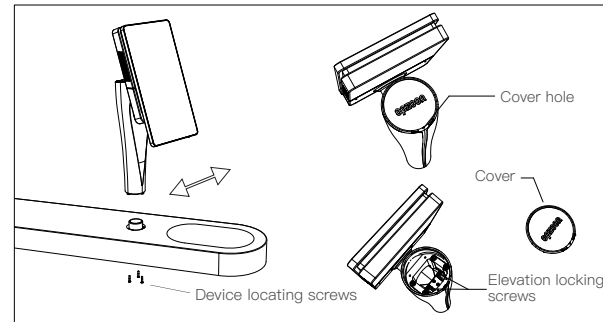


Installation Guide

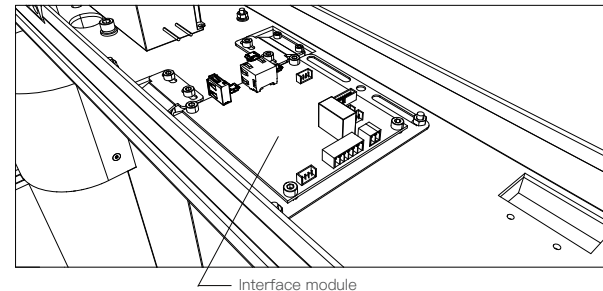
1. Remove the base bracket inside the gate cover. Install the locating adaptor on the base bracket, and then replace the base bracket to the original position.



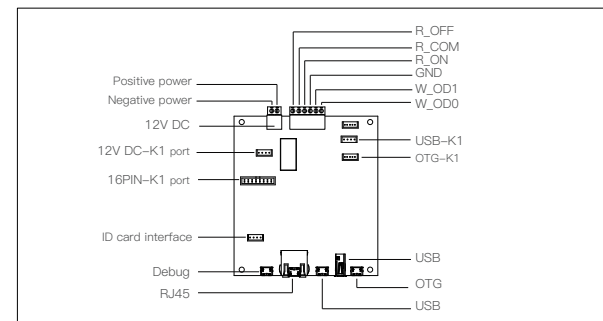
2. Install the device on the locating adaptor; fasten screws after adjusting the horizontal angle. Remove the cover from the device holder to adjust angle, then release elevation locking screws; fasten screws while completing angle adjustment.



3. Install the interface module to the reserved mounting location under the gate cover.



4. Connect cables to the interface module, and then cover the gate cover.



Product Specification

Product model	OFR-T1-S
Facial anti-counterfeit	Support
Recognition distance	60 ~ 90 cm
Recognition mode	1 : N , 1 : 1 , 1:1 / 1:N
Ambient light range	0 ~ 800LUX(Camera lens should be avoided from the direct sunlight)
Processor	2.1GHz quad-cord CPU plus 192-cord GPU
Memory	2GB DDR3 RAM
Flash	16GB (scalable)
Camera	Dedicated binocular camera (visiable light and near-infarad lens)
Display	8.0" IPS LCD touch screen
Ambient temperature	0°C ~ 45°C
Power	12V --- 4.16A Max
Dimension	148 x 123 x 351 mm (L x W x H)
WIFI	Support
Bluetooth	Support
Wiegand output	1, W_OD0/W_OD1/GND
Relay	1, R_ON/R_COM/R_OFF
Network port	1
USB	2
OTG	1
Debug	1
DC	1

Welcome

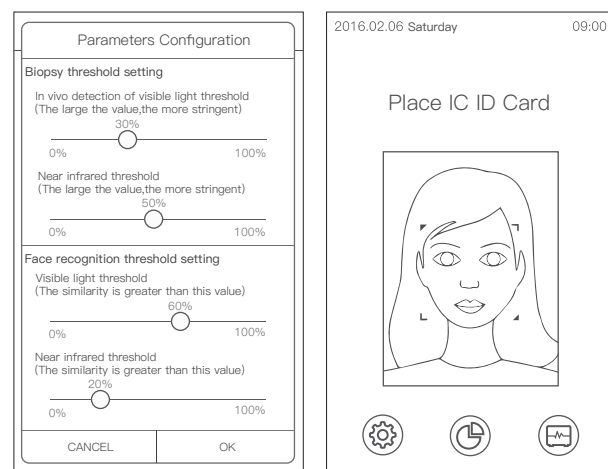
Press the power button boot device, "Wizard" will guide you through a few simple steps to set up your device. You can connect to the Internet through WLAN or wired network, press the "Wizard" to complete the activation device.

You need to register an account on the "Opzoon facial recognition cloud management platform" (<https://www.opzoonface.com>). Login account, will be able to perform remote configuration management, decentralization of authority, distribution of content and business rules.

[Note] If you do not activate the device, the device can only use the basic functions, business functions can not be used "Opzoon facial recognition cloud management platform" provides.

Device Management

Administrators can screen device by clicking the "Management" button, validated, enter the management interface. Standalone mode is provided in the apparatus to complete the relevant management interface; Network mode version can be done by setting the management platform or App.



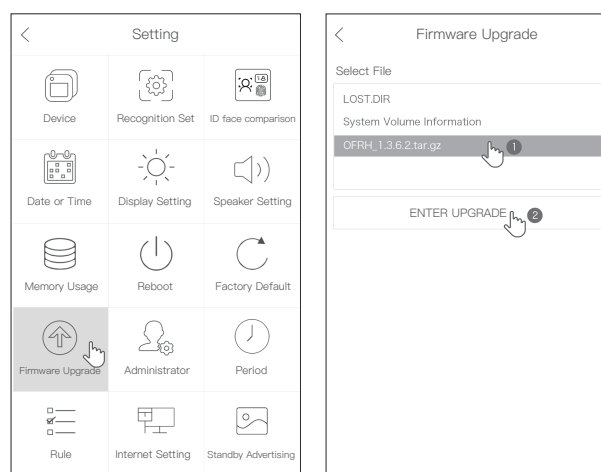
Face recognition is set according to the general usage scenarios, we offer a default option for you to choose to use. You can also according to different usage scenarios, manually set the scene and face

recognition mode, flexible and controllable.

After the "Getting Started", enjoy the elegance of face recognition service.

Software Upgrade

Copy the downloaded firmware to a USB disk and insert USB drive machine, device management, firmware upgrade click, select USB drive firmware, click on "Enter Upgrade", then the device will automatically complete the firmware upgrade.



More Information

Download the product brochure in www.opzoon.com (with safety information), frequently asked questions and privacy terms.

Service Hotline

400-706-8366

Trademark Statement

汉柏, Opzoon, The 汉柏 logos, The opzoon logo, opzoon ons, opzoon gates, opzoon doors and opzoon ins are registered trademarks of Opzoon Ltd., registered in mainland China and other countries or regions. Other trademarks in this manual and the product described in this manual, appeared, product names, service names and company names of their respective owners.

In the event of seal damage, equipment modification or modification of software program, implantation of other software, etc., Opzoon will cancel the warranty service on the equipment and software system. Opzoon reserves the right to pursue legal obligations in violation of Opzoon's intellectual property rights.

Security Information

Failure to comply with safety instructions may result in fire, electric shock, or other injury or damage to the product or other property. Nonstandard ground wire may be dangerous. Do not disassemble products and opening an enclosure itself. Non-professionals do not open, alter or repair the product.

Recycling and Environmental Protection Information

Based on "waste electrical and electronic product recycling regulations", when users no longer need the product, please observe local waste electrical and electronic products recycling-related laws and regulations, will have certified products to local recycling companies for recycling.

To satisfy FCC RF exposure requirements, a separation distance of 20cm or more should be maintained between the antenna of this device and persons during operation. To ensure compliance, operations at closer than this distance is not recommended.

This device complies with Part 15 of the FCC Rules. Operation is subject to the following two conditions: (1) this device may not cause harmful interference, and (2) this device must accept any interference received, including interference that may cause undesired operation.

This equipment has been tested and found to comply with the limits for a Class B digital device, pursuant to part 15 of the FCC Rules. These limits are designed to provide reasonable protection against harmful interference in a residential installation. This equipment generates, uses and can radiate radio frequency energy and, if not installed and used in accordance with the instructions, may cause harmful interference to radio communications. However, there is no guarantee that interference will not occur in a particular installation. If this equipment does cause harmful interference to radio or television reception, which can be determined by turning the equipment off and on, the user is encouraged to try to correct the interference by one or more of the following measures:

- Reorient or relocate the receiving antenna.
 - Increase the separation between the equipment and receiver.
 - Connect the equipment into an outlet on a circuit different from that to which the receiver is connected.
 - Consult the dealer or an experienced radio/ TV technician for help.
- Changes or modifications not expressly approved by the party responsible for compliance could void the user's authority to operate the equipment.