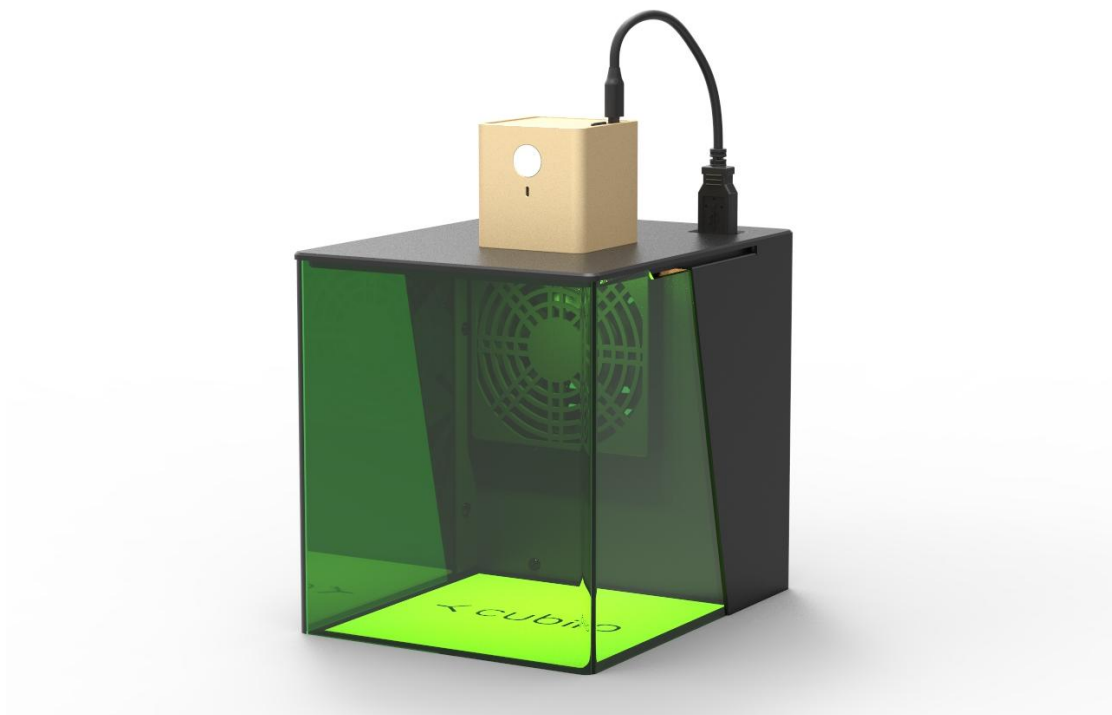


← cubiio

PL-01

User's Manual



Warnings and Cautionary Messages	3
Safety and Regulatory Information	5
Compliances and Safety Statements.....	5
Important Safety Instructions.....	7
Renewal Policy.....	8
Disclaimer	8
Before Starting	9
Checking Contents.....	9
Product Features.....	10
Cubiio Specification.....	11
Getting Started	12
Product Overview.....	12
Application	13
Setup	13
Assembly	13
Turning cubiio on and off.....	14
Ready to work	14
Online Support	15
Copyright Information	16

Warnings and Cautionary Messages

Before using cubiio, you are fully aware that the operation of a laser, such as cubiio, is a hazardous activity.

Also, you acknowledge that you have attained the legal age of majority according to the laws of your respective Country.



Warning: Class 4 laser radiation when open and interlock defeated.
Avoid exposure to the beam.

Warning: When connecting this equipment to a power outlet, connect the field ground lead on plug to a valid earth ground line to prevent electrical hazards.

Warning: Operate cubiio within a restricted access location (a "RAL"). Warn any other persons of the dangers of operating the cubiio within the RAL, and prevent any persons from being within the RAL without wearing the appropriate attire and personal protective equipment at all times. Cubiio should be kept within the RAL at all times and should only be accessed through the use of a special tool, lock and key, or other means of security controlled by product owner.

Warning: cubiio is compliant with the requirements of a Class 1 Laser Product and are inherently eye safe in normal operation. However, you should never look directly at working area when laser is on.

Warning: HAZARDOUS MOVING PARTS. KEEP FINGERS AND OTHER BODY PARTS AWAY.



Caution: Read all of the Important Safety Instructions and keep them for later use.

Caution: Follow all warnings and instructions on the manual.

Caution: This product does not contain any serviceable user parts.

Safety and Regulatory Information

Compliances and Safety Statements

FCC ID: 2AN3XPL-011025

FCC Warning Statement

This device complies with Part 15 of the FCC Rules. Operation is subject to the following two conditions:

- (1) this device may not cause harmful interference, and
- (2) this device must accept any interference received, including interference that may cause undesired operation.

Note: This equipment has been tested and found to comply with the limits for a Class B digital device, pursuant to part 15 of the FCC Rules. These limits are designed to provide reasonable protection against harmful interference in a residential installation. This equipment generates, uses and can radiate radio frequency energy and, if not installed and used in accordance with the instructions, may cause harmful interference to radio communications.

However, there is no guarantee that interference will not occur in a particular installation. If this equipment does cause harmful interference to radio or television reception, which can be determined by turning the equipment off and on, the user is encouraged to try to correct the interference by one or more of the following measures:

- Reorient or relocate the receiving antenna.
- Increase the separation between the equipment and receiver.
- Connect the equipment into an outlet on a circuit different from that to which the receiver is connected.
- Consult the dealer or an experienced radio/ TV technician for help.

Caution: Any changes or modifications not expressly approved by the party responsible for compliance could void the user's authority to operate this equipment

FCC Radiation Exposure Statement

*This equipment must be installed and operated in accordance with provided instructions and the antenna(s) used for this transmitter must be installed to provide a separation distance of at least 20 cm from all persons and must be co-located or operating in conjunction with any other antenna or transmitter.

Taiwan NCC Warning Statement

Administrative Regulations on Low Power Radio Waves Radiated Devices
warning:

Article 12

Without permission granted by the NCC, any company, enterprise, or user is not allowed to change frequency, enhance transmitting power or alter original characteristic as well as performance to an approved low power radio-frequency devices.

Article 14

The low power radio-frequency devices shall not influence aircraft security and interfere legal communications; If found, the user shall cease operating immediately until no interference is achieved.

The said legal communications means radio communications is operated in compliance with the Telecommunications Act.

The low power radio-frequency devices must be susceptible with the interference from legal communications or ISM radio wave radiated devices.

Standards Compliance

The equipment is in compliance with international standards as described in Table 1.

Table 1

Specification	Description
EU Compliance (CE Mark)	Products with CE Marking indicate compliance with Low Voltage Directive, EMC Directive, RED, SAR and RoHS.
EMC	47CFR FCC Part15B EN 55024/32 EN 301489-1/-17
RF	47CFR FCC Part15C EN 300328 NCC: LP0002
SAR	47CFR FCC §2.1091 EN 62479:2010
Laser	IEC 60825-1
Safety	EN 60950-1
RoHS	EN 62321



Important Safety Instructions

- ◆ Wear appropriate attire and personal protective equipment at all times while operating the cubiio. This includes, but is not limited to, protective eyewear, closed toed shoes, and clothing that adequately covers your extremities.
- ◆ Always be alert when the laser is powered on.
- ◆ Disconnect the power plug from the power input before moving.
- ◆ Ensure the stability when installing the device. Tipping or dropping could cause damage.
- ◆ Children are not allowed to get close to the device.
- ◆ Make sure the material you are processing does not emit toxic substances when heated.
- ◆ Do not wet the device and the plug.
- ◆ Flammable materials placed around the device should be avoided.
- ◆ Some materials emit smoke and odor when being processed. Please be aware of ventilation at all times.
- ◆ Always check appearance and structure (including screws and nuts) of cubiio before operation.
- ◆ Make sure to follow the correct power rating and power type indicated on product label.
- ◆ Do not use over one hour continuously and the **maximum ambient temperature should be less than 30C (86F)**.

Renewal Policy

We provide renew for early failures. In case you receive a defective piece, please contact our support team. If Return Material Authorization is granted, you can send the defective piece back and you will receive a new piece with the same color. To be more specific, 15-day renewal is provided. Please test your cubiio as soon as possible when you receive your package.

Damages caused by not following warnings and safety instructions will not be covered under renewal policy.

Disclaimer

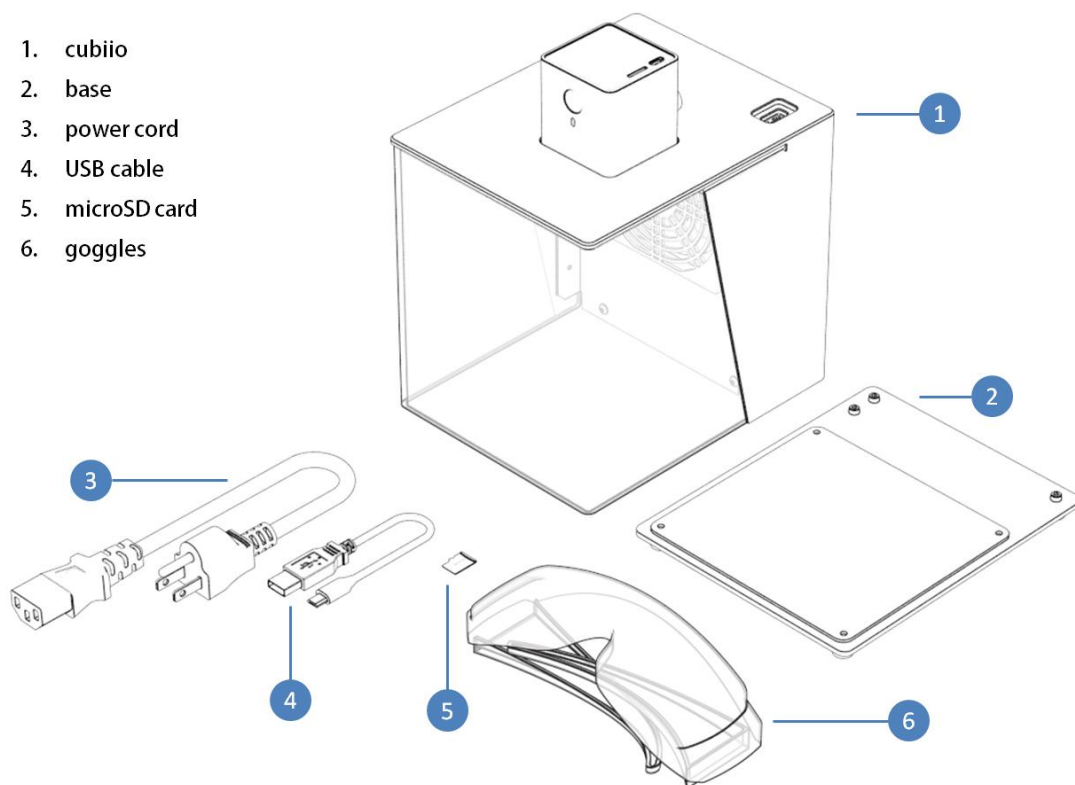
You (the consumer), and by extension your successors and assign in interest, agree to release and hold harmless cubiio, its owners, directors, employees, agents, distributors, retailers, contractors and affiliates from any and all liability loss, claims (including, but not limited to, product liability, negligence, and breach of warranty claims), damages, or injury that might arise or result from, or relate to, now and in the future, your operation of the cubiio.

Before Starting

Thank you for purchasing cubiio, the most compact laser engraver. This manual provides information regarding functions, performance and operating methods that are required for using the equipment. Before you turn on the cubiio, please read this manual thoroughly to deepen your understanding of the product.

Checking Contents

1. cubiio
2. base
3. power cord
4. USB cable
5. microSD card
6. goggles



Product Features

Cubiio contains several safety measures to provide fully protection for users:



Eye Protection: Goggles are included in every cubiio package. Always wear goggles while cubiio is working. Do not look at the laser radiation even with the goggles.



Password Lock: Password is required before processing every time. Only authorized users are allowed to operate cubiio.



Processing Indication: A red LED indicates when the laser is energized and operating.



Motion detection: A sensitive 3-axis accelerometer is equipped. While accidental movement happens during operating, cubiio will shut down immediately.

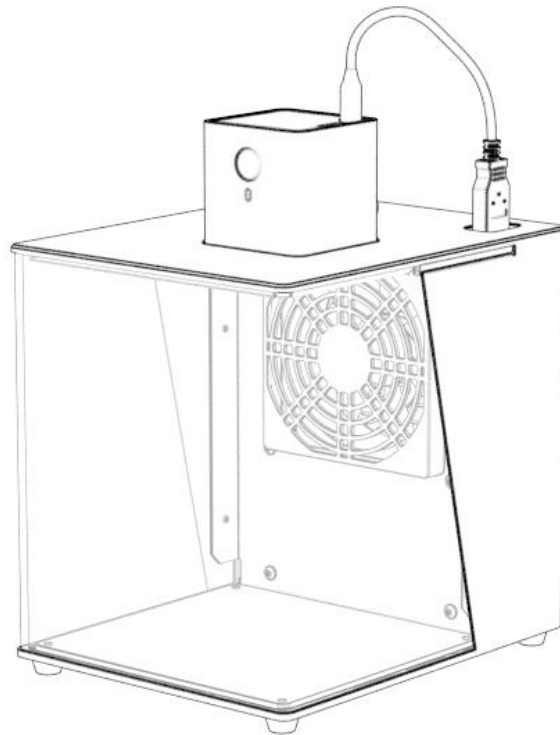


Overheat Shutdown: Cubiio should work in the environment with sufficient heat dissipation. If the inner temperature approaches to the damaging threshold, cubiio turns itself off.



Safety Interlock in Protective Housing: The shield is a protective housing which prevents users access to laser radiation in excess of the AEL for Class 1. In addition, a micro switch attached at the bottom of the shield as a safety interlock is provided to prevent the protective housing from accidental displacement or removal.

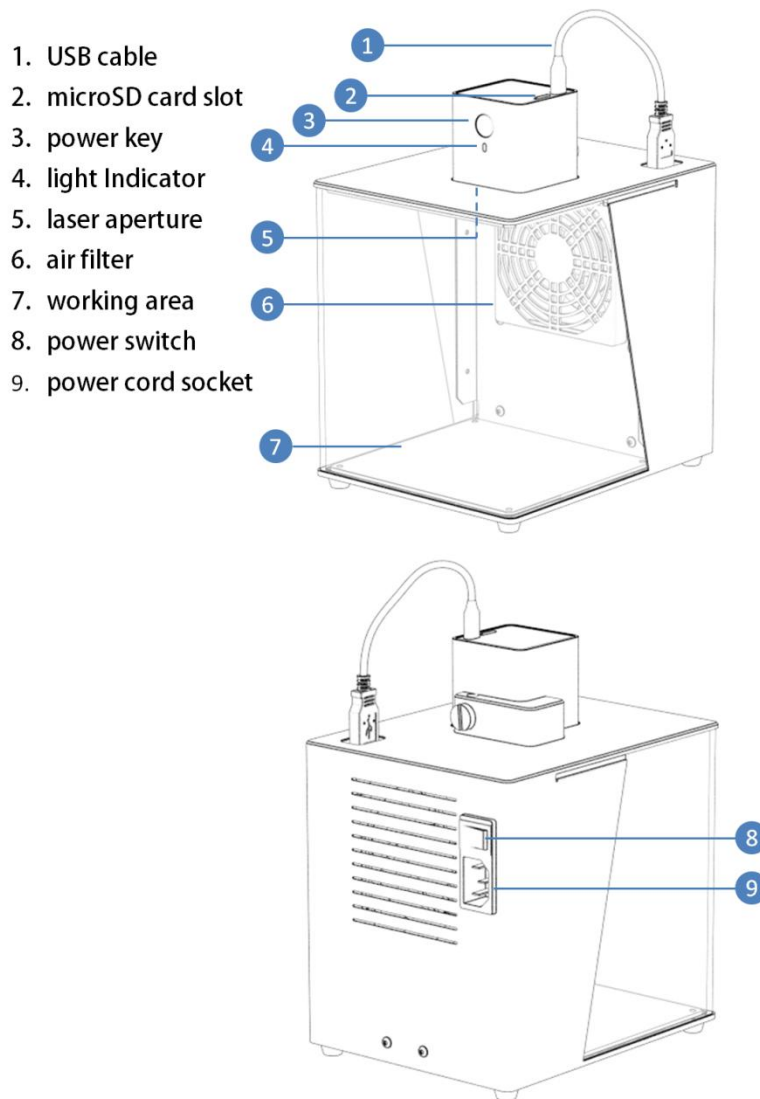
Cubiio Specification



Laser Source	Blue Laser, 450 nm
Max. Laser Output	<800 mW
Working Area	100x100 mm
Working Distance	155 mm
Dimensions	140x181x220 mm
Weight	1.3 kg
Power Input	AC 100-240V , 50-60Hz
Power Output	DC 5V, 2A via USB Type A
Filter	Active Charcoal + Zeolite
I/O	Micro SD card
App Connection	BLE (Bluetooth Low Energy) 2402-2480MHz
App OS	iOS 10+ / Android 4.4+

Getting Started

Product Overview



Application

Download cubiio app by QR codes on the official website or search “cubiio” in Google Play or Apple store.

Follow the instruction to install cubiio app step by step and read **Quick Start** provided in the app carefully to ensure correct use of the product.

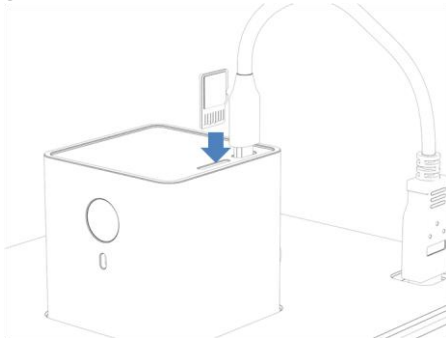


Setup

Assembly

Insert micro SD card

1. Place the micro SD card in the micro SD card slot, with the gold-colored contacts facing frame.



2. Push the memory card all the way into the slot until you hear a click sound.

Remove micro SD card

1. Press against the edge of the micro SD card and release it.
2. Draw the card outwards to fully remove it.

Turning cubiio on and off

Turn on the device

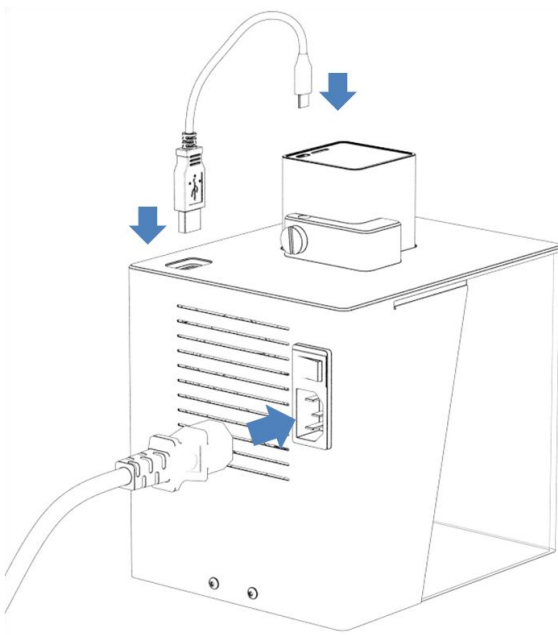
1. Turn on the power switch.
2. Touch the power key once and check the notification light (amber) on.

Turn off the device

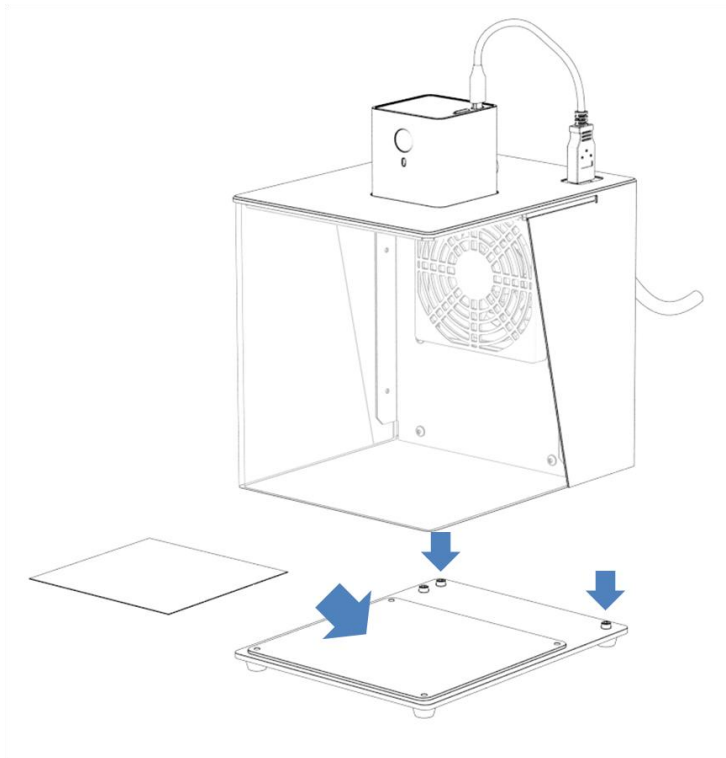
1. Touch and hold down the power key until the notification light off.
2. Turn off the power switch.

Ready to work

1. Plug in power cord and USB cable.



2. Set the working sample on the base and then put the device on it. Notice the position of the pins and make sure you hear “click, click” sounds.



3. Turn on the device.
4. Access the Bluetooth function of your mobile device
5. Run cubiio app. Search and select your device.
6. **Read *Quick Start* thoroughly** before actual processing to ensure correct use of all the functions inside cubiio app.

Online Support

We provide online support worldwide. If you have any further question, please send us an email at: support@muherz.com

Copyright Information

The copyright in this manual, the hardware, software and firmware in the laser engraver described therein are owned by MUHERZ LIMITED, All rights reserved.

cubiio is a trademark of MUHERZ LIMITED. All other trademarks are the property of their respective owners.

Information in this document is subject to change without notice and does not represent a commitment on the part of MUHERZ LIMITED. Please visit our website (<http://cubiio.muherz.com>) for the latest updates. No part of this manual may be reproduced or transmitted in any form or by any means, for any purpose other than the purchaser's personal use, without the expressed written permission of MUHERZ LIMITED.