

# decohome

MODEL:DGSB200WOD



## USER MANUAL

折线

IN CASE NO SOUND PLEASE FOLLOW BELOW STEP TO CHANGE TV FORMAT TO PCM (NOTE: TV SETTING VARY ON BRANDS)

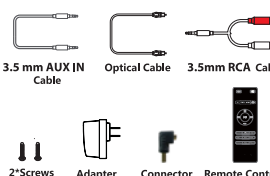
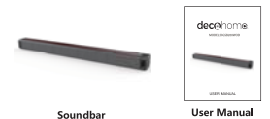
Step 1: Go to the tv setting and select audio or sound out

Step 2: Select the source of your cable connection (Optical, ARC(HDMI), Line in or Bluetooth)

Step 3: Change the audio format or digital audio to **PCM**

折线

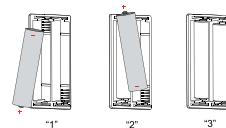
## In the box



## Installing the battery

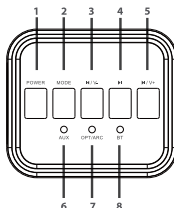
The battery of the remote control is 2\* AAA batteries (NOT INCLUDED). If the batteries need to be replaced, gently open the battery cover of the remote control, take 2\* AAA batteries and place the positive and negative electrodes of the batteries, in the remote control in the correct direction. Finally, return the battery cover to the remote control.

**NOTE:** The remote control shall be placed in the correct direction of positive and negative pole when installed.



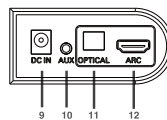
## Location of controls

### SIDE PANEL



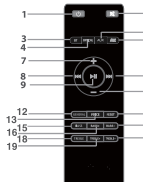
- [POWER ] button : Power ON/OFF
- [MODE ] button : Switch modes
- [M/V- ] button : decrease volume /skip to previous track
- [M ] button : Play/pause track
- [M/V+ ] button : increase volume /skip to next track
- [AUX ] : AUX indicator light
- [OPT/ARC ] : OPTICAL LED indicator light / ARC LED indicator light
- [BT ] : BT LED indicator light

### BACK PANEL



- [DC IN ] : DC IN Jack
- [AUX ] : Input AUX
- [OPTICAL ] : Input OPTICAL
- [ARC ] : Input ARC

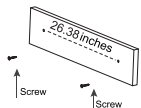
## REMOTE CONTROL



- [ ] Key: Standby Power ON/OFF
- [X] Key: Mute volume
- [BT ] Key: BT mode
- [OPTICAL ] Key: OPTICAL mode
- [AUX ] Key: AUX mode
- [ARC ] Key: ARC mode
- [+ ] Key: Increase volume
- [M ] Key: Skip to previous track
- [M ] Key: Play/pause music
- [M ] Key: Skip to next track
- [ ] Key: Decrease volume
- [ ] Key: Decrease volume
- [GENERAL] Key: GENERAL mode
- [VOICE ] Key: VOICE mode
- [RESET ] Key: Restore settings
- [BASS ] Key: BASS mode
- [BASS+ ] Key: Increase BASS volume
- [BASS- ] Key: Decrease BASS volume
- [TREBLE ] Key: TREBLE mode
- [TREBLE+ ] Key: Increase TREBLE volume
- [TREBLE- ] Key: Decrease TREBLE volume

## Mounting the speaker

- Measure a width of 26.38 inches on the wall
- Mark the position of the mounting screws on the wall using a pencil
- Drill the supplied screws directly into the marks that you have made on the wall and leave approximately 0.3 inch length to hook the Wireless Sound Bar.
- Put the Wireless Sound Bar onto the mounting screws. Make sure they are firm and stable.



When the soundbar is installed on the wall,ARC can be installed with the connector if the position is not enough.

## Operation process

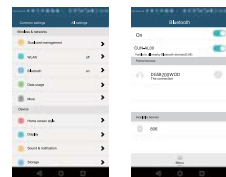
- Connect the DC power cord into a wall socket.
- Turn the speaker on by pressing the [POWER] button on the speaker or remote control

### 3.1 Bluetooth mode operation

- 3.1.1 Press the [MODE] button on the speaker or the [BT] button on the remote control. When [BT] Bluetooth indicator lights flash blue and a "bip" sound is heard, then go into the Bluetooth pairing mode.
- 3.1.2 During the pairing process, keep the speaker and Bluetooth device within 10 meters of each other.
- 3.1.3 Set your phone or other Bluetooth device to Bluetooth status.

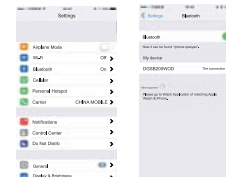
## Bluetooth Connection Method for Android system:

- Go to SETTINGS> BLUETOOTH(make sure Bluetooth is turned ON)
- When your Bluetooth enabled device finds the speaker, select "DGSB200WOD" from the list of found devices. When succeeding pairing, you will hear "bip beep". [BT ] Bluetooth indicator light appears normally on. When play the music, the blue led light will flash slowly.



## Bluetooth Connection Method for iPhone iOS system:

- Go to SETTINGS> BLUETOOTH(make sure Bluetooth is turned ON)
- When your Bluetooth enabled device finds the speaker, select "DGSB200WOD" from the list of found devices. When paired successfully, you will hear "bip beep". [BT ] Bluetooth indicator light appears on. When playing music, the blue led light will flash slowly.



**NOTE:** It is recommended to watch video in HDMI ARC/OPTICAL/AUX mode

### 3.2 Optical/ARC mode operation

- 3.2.1 Please insert one connection port of OPTICAL fiber into the [OPTICAL] fiber input jack or [ARC] fiber input jack first, and then insert another connection port into the socket of media playback device.
- 3.2.2 Press the [MODE] button on the speaker or the [OPTICAL or ARC] button on the remote control. When [OPTICAL] optical fiber indicator lights up red light, then enter the optical fiber mode state. When [OPT/ARC] optical fiber indicator lights up blue light, then enter the ARC fiber mode state.

**NOTE:** Prior to usage, please make sure your TV has optical / ARC output. Then turn on PCM settings of your TV when connected in optical / ARC mode in case it doesn't have sound.

### 3.3 AUX mode operation

- 3.3.1 Insert one of the connection ports of the audio cable into the [AUX ] jack, and then insert another connection port into the socket of the media playback device.
- 3.3.2 Press the [MODE] button on the speaker or the [AUX ] button on the remote control. When [AUX ] indicator lights up red light, enter AUX state.

**NOTE:** Prior to usage, please make sure your TV has AUX output in case it doesn't have sound.

### 3.4 Volume control operation

- 3.4.1 Short press the [M/V- ] button on the speaker or the [VOL-] button on the remote control to reduce the volume.
- 3.4.2 Short press the [M/V+ ] button on the speaker or the [VOL+] button on the remote control to increase the volume.
- 3.4.3 Press the [TREBLE] button on the remote control to reduce the treble volume.
- 3.4.4 Press the [TREBLE+] button on the remote control to increase the treble volume.
- 3.4.5 Press the [BASS] button on the remote control to reduce the bass volume.
- 3.4.6 Press the [BASS+] button on the remote control to increase the bass volume.

### 3.5 Skipping and play/pause Songs operation

- 3.5.1 Long press the [M/V- ] button on the speaker or the [ ] button on the remote control to skip to the previous song.
- 3.5.2 Long press the [M/V+ ] button on the speaker or the [ ] button on the remote control to skip to the next song.
- 3.5.3 Press the [ ] button on the speaker or the remote control to play or pause music.

## Specification

- Size : 940\*84\*73mm
- BT working distance : 10m
- S/N : ≥65db
- BT IC : 4.1
- Output power : 60W
- Power DC : DC 18V
- Frequency Response : 120Hz-16KHz
- Distortion : <0.5%
- Driver Size : 2.5\*4

**Malfunction analysis:**  
Consult the after-sale service for help.

### Legal information:

Any copy, changes or modifications of the user manual not expressly approved unless dealer's permission.

### Caution:

- Do not take this apparatus apart or repair it.
- Do not use this apparatus near water and humid.
- Clean only with a dry cloth.

### Limited Warranty:

You may within 1 year from your original date of purchase return it to the authorized service for repair.

### Cautions and warnings:

- Do not use the bluetooth speaker near water or humid; do not use the device near the bathtub, water tank, swimming pool and so on.
- Do not install the bluetooth speaker in the hot or cold environment.
- Do not expose the device in the sunshine directly.
- Do not use the device near fire, such as, stove, candle or fireplace and so on.
- Do not use abrasive cleaning solvents to clean the bluetooth speaker.

This device complies with part 15 of the FCC Rules. Operation is subject to the following two conditions:  
(1) this device may not cause harmful interference, and  
(2) this device must accept any interference received, including interference that may cause undesired operation.

# decohome

Manufacturer's 1-Year Limited Warranty

The manufacturer warrants that all parts and components are defect free in materials and workmanship for 1 year. This warranty is valid only in accordance with the conditions set forth below:

- The warranty extends only to the original consumer purchaser and is not transferable. In addition, proof of purchase must be demonstrated.
- This limited warranty is the only written or express warranty given by the manufacturer. Any implied warranty of merchantability or fitness for a particular purpose on this product is limited in duration to the duration of this warranty. Some states do not allow limitations on how long an implied warranty lasts, so the above limitation may not apply to you.
- This warranty gives you specific legal rights. You may also have other rights which vary by state.

### Procedure for Replacement or Return within the 1 Year:

To return the product for replacement or refund within the 1-year, the original purchaser must pack the product securely and send it postage paid with a description of the reason for replacement or refund, proof of purchase, and include your order number on the package, to the following address:

Deco Home  
85 Cedar Grove  
Edison, NJ 08817

备注：送大货样，工程部确认尺寸、颜色及丝印内容后方可做大货

生产单号:	型号:SSAM-6
料号:	物料名称: 说明书
其它要求: 105g铜版纸, 黑白 正反面印刷 需按要求折叠, 折叠后成品尺寸: 85*110mm 内容以工程承认样品为准	
美 工	结 构
电 子	审 核

## **FCC Requirement**

changes or modifications not expressly approved by the party responsible for compliance could void the user's authority to operate the equipment.

Note: This equipment has been tested and found to comply with the limits for a Class B digital device, pursuant to Part 15 of the FCC Rules. These limits are designed to provide reasonable protection against harmful interference in a residential installation. This equipment generates, uses, and can radiate radio frequency energy, and if not installed and used in accordance with the instructions, may cause harmful interference to radio communications. However, there is no guarantee that interference will not occur in a particular installation. If this equipment does cause harmful interference to radio or television reception, which can be determined by turning the equipment off and on, the user is encouraged to try to correct the interference by one or more of the following measures:

- Reorient or relocate the receiving antenna.
- Increase the separation between the equipment and receiver.
- Connect the equipment into an outlet on a circuit different from that to which the receiver is connected.
- Consult the dealer or an experienced radio/TV technician for help.