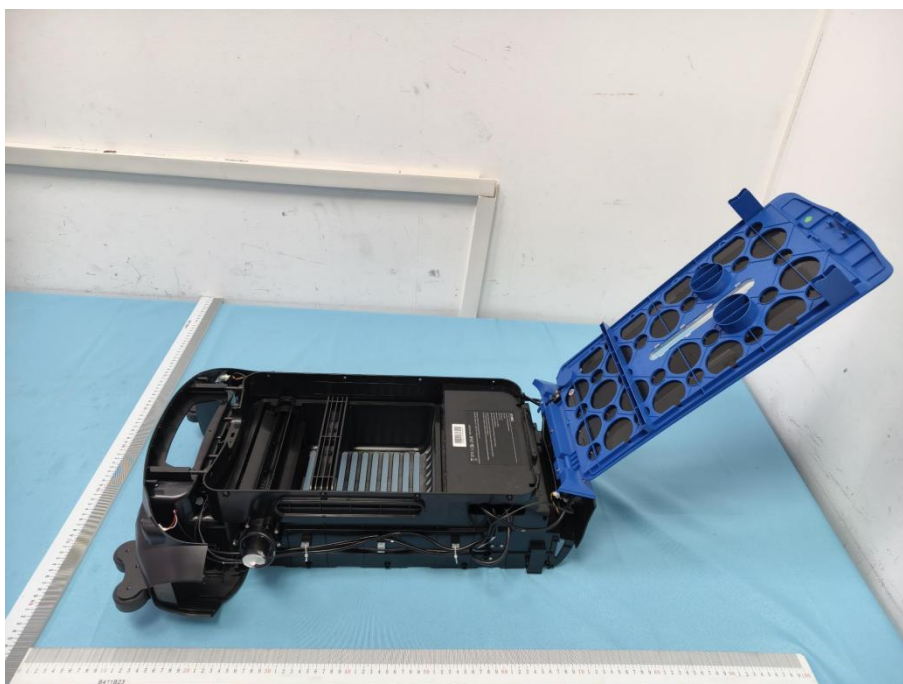
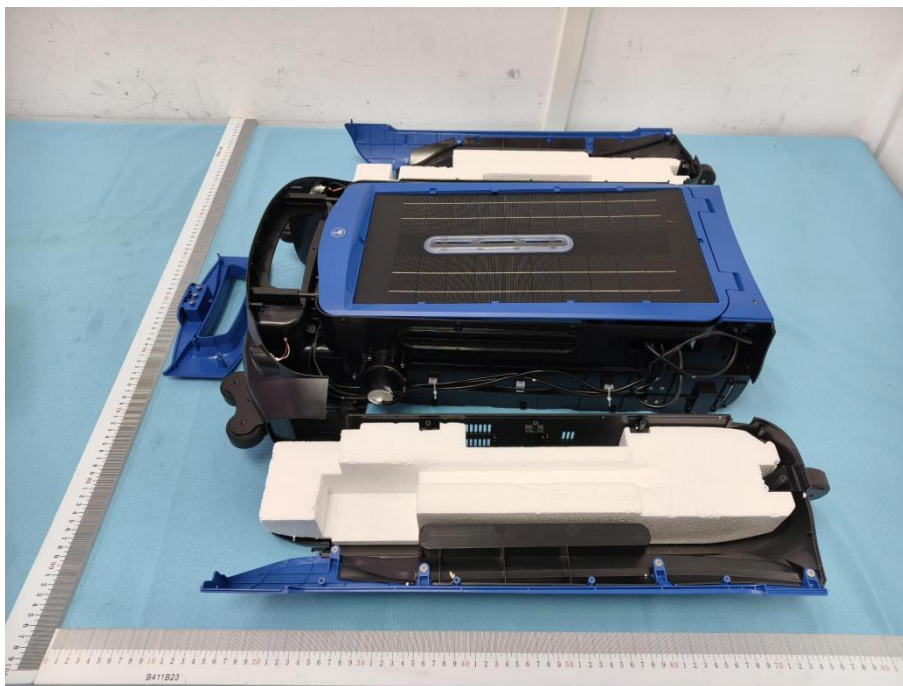
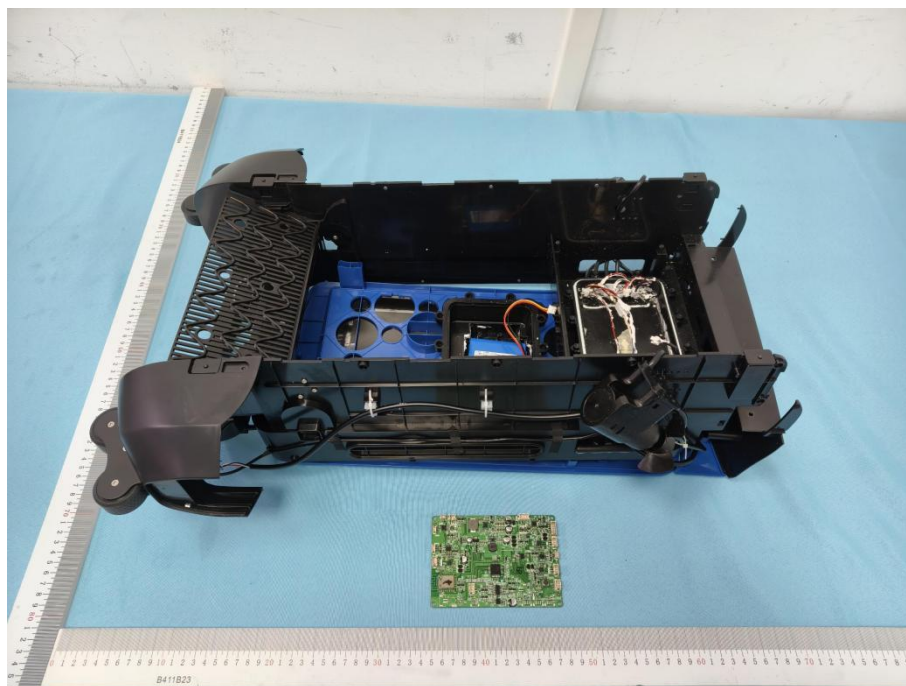
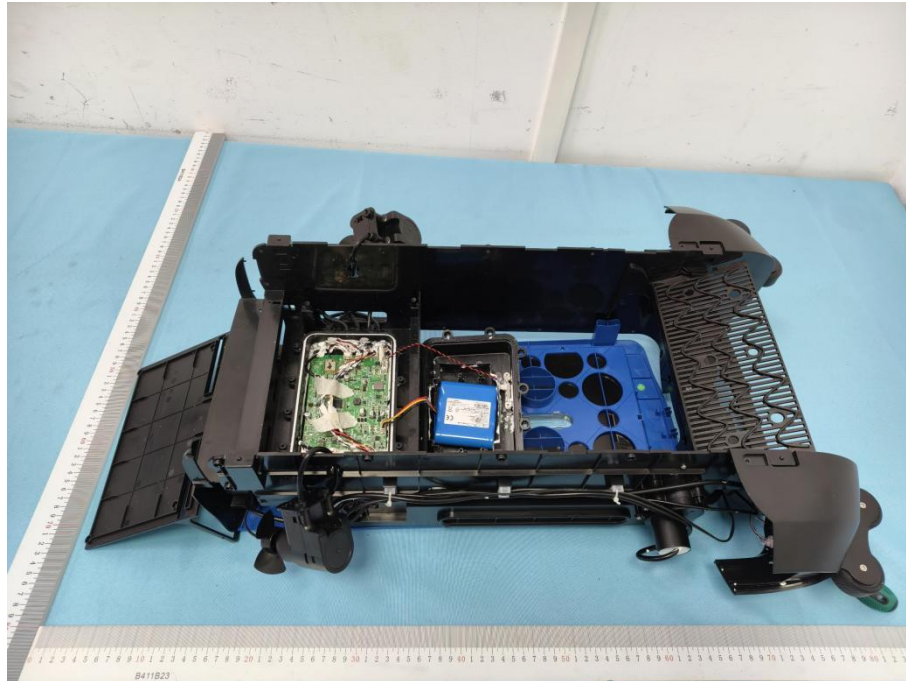
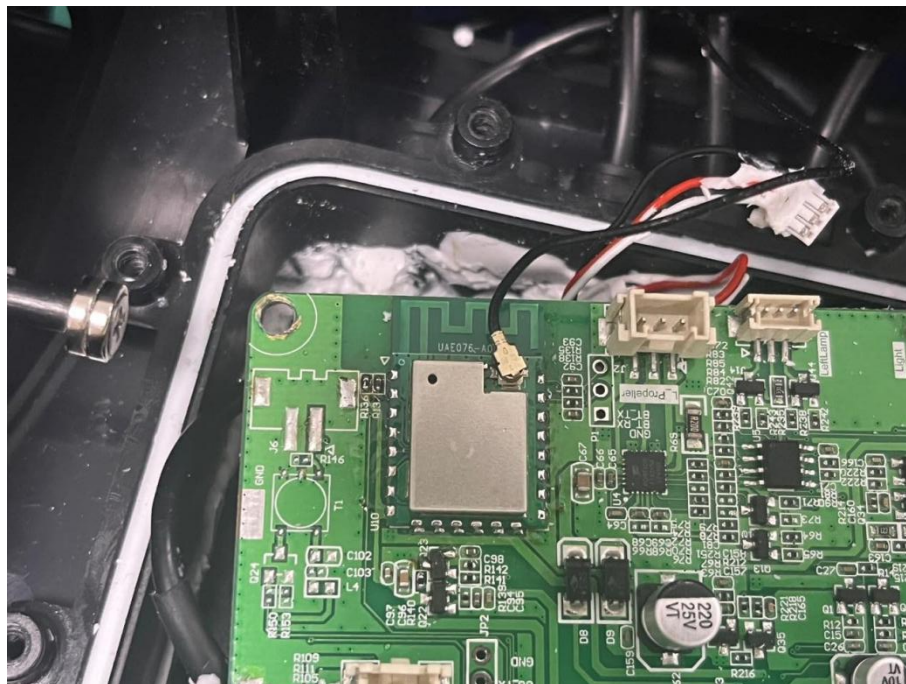
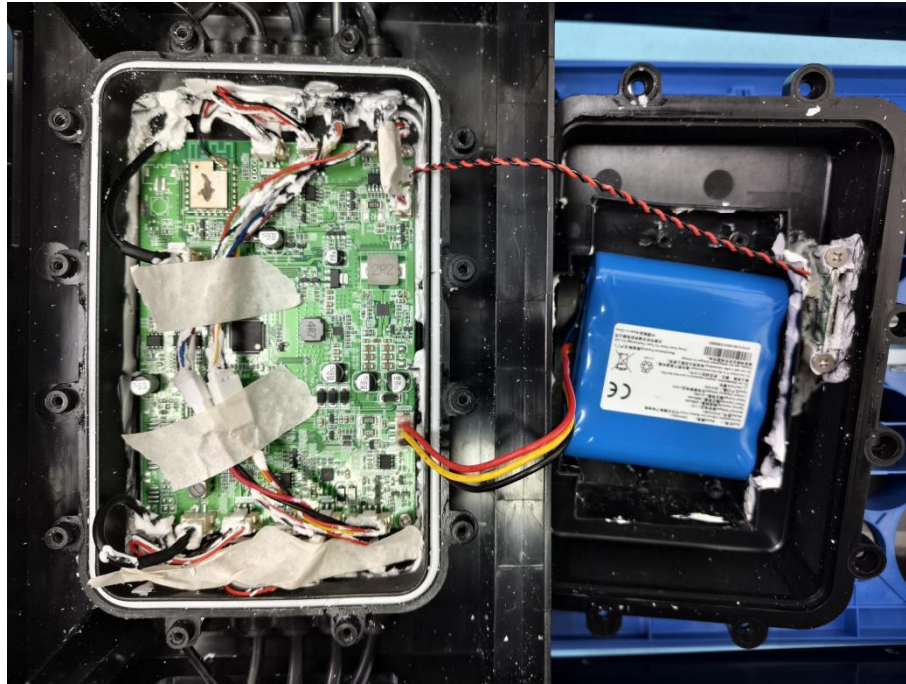


## Appendix III -- Internal Photograph






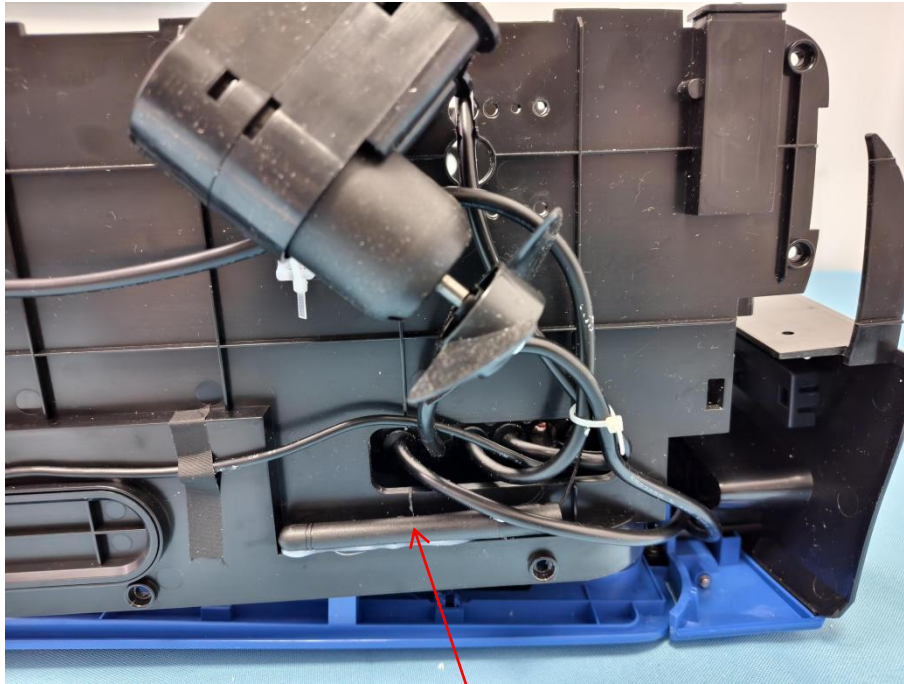




**Shenzhen Anbotek Compliance Laboratory Limited**

Address: Sogood Industrial Zone Laboratory & 1/F. of Building D, Sogood Science and Technology Park,  
Sanwei Community, Hangcheng Subdistrict, Bao'an District, Shenzhen, Guangdong, China  
Tel: (86) 0755-26066440 Email: [service@anbotek.com](mailto:service@anbotek.com)

 Hotline  
400-003-0500  
[www.anbotek.com](http://www.anbotek.com)

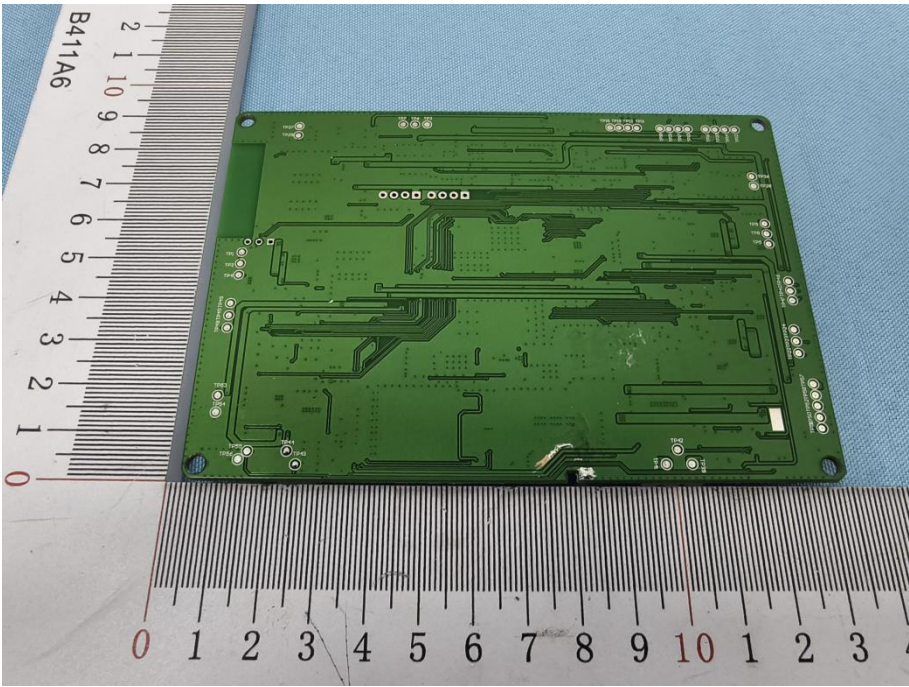


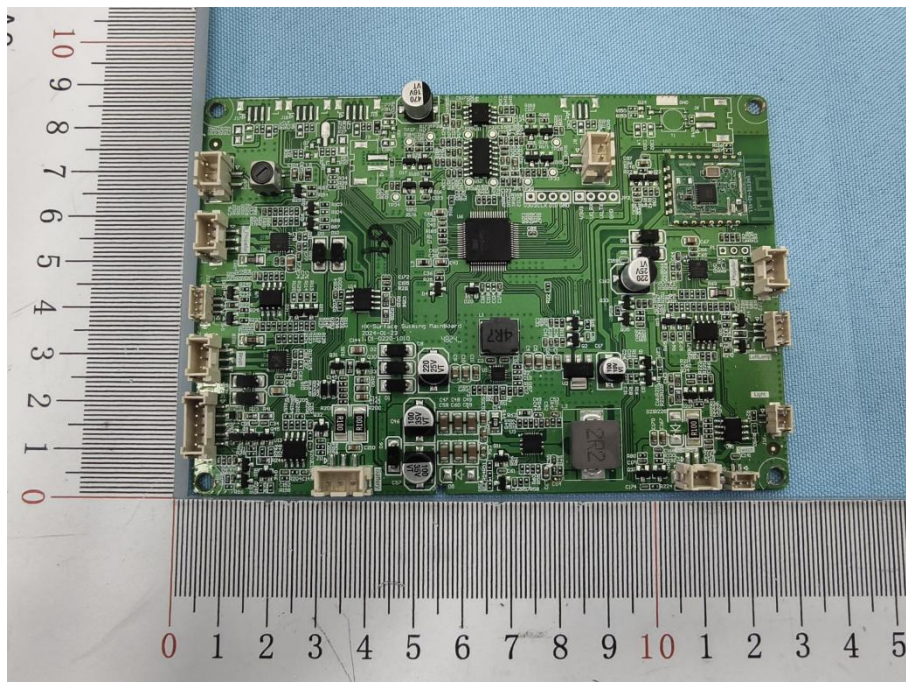
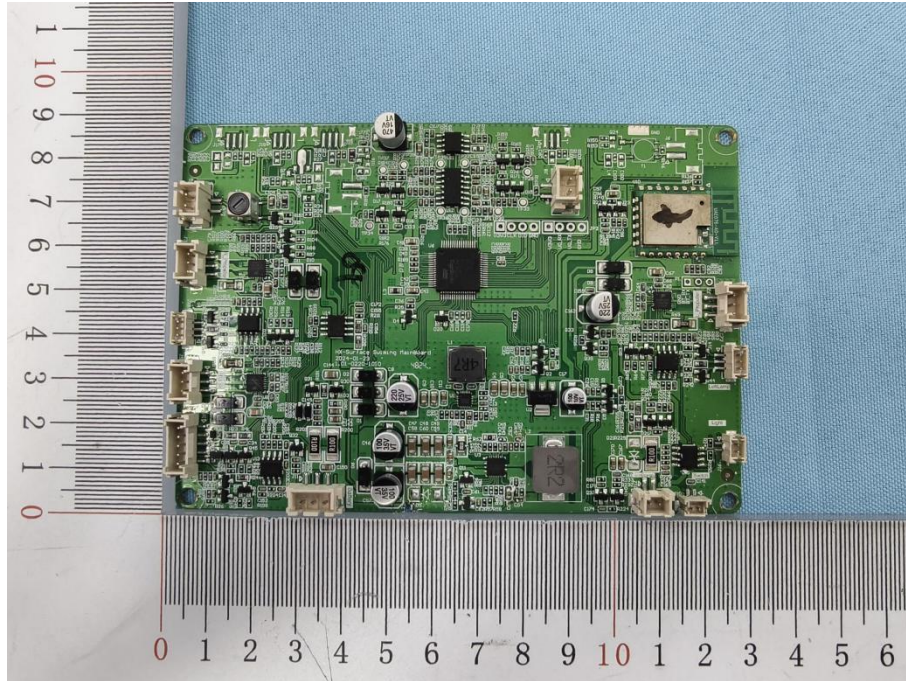
ANT

Note: The antenna is fixed to the hull with hot melt glue and is not replaceable.








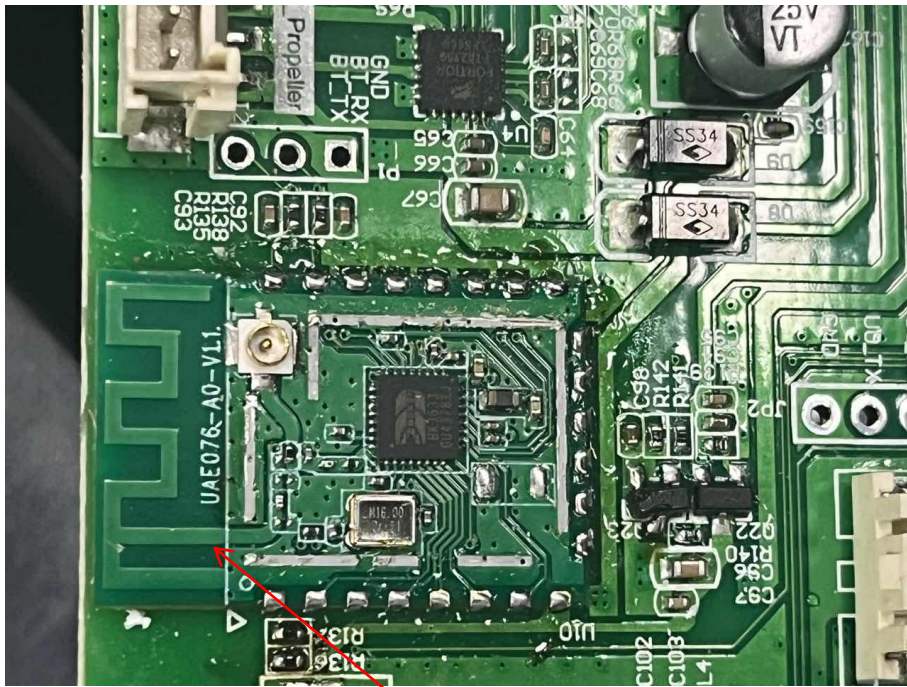


**Shenzhen Anbotek Compliance Laboratory Limited**

Address: Sogood Industrial Zone Laboratory & 1/F. of Building D, Sogood Science and Technology Park,  
Sanwei Community, Hangcheng Subdistrict, Bao'an District, Shenzhen, Guangdong, China  
Tel: (86) 0755-26066440 Email: service@anbotek.com

 Hotline  
400-003-0500  
[www.anbotek.com](http://www.anbotek.com)





ANT-NO USE

