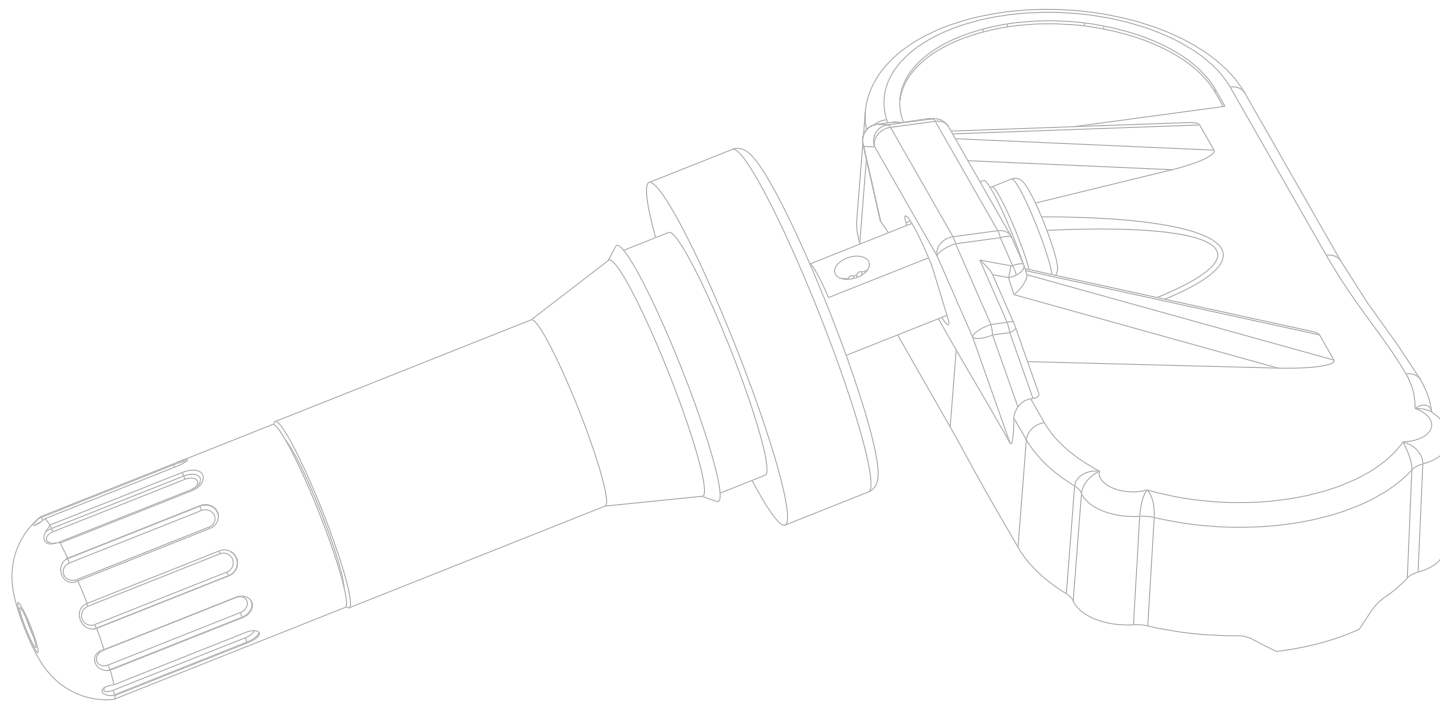


TPMS

FI87

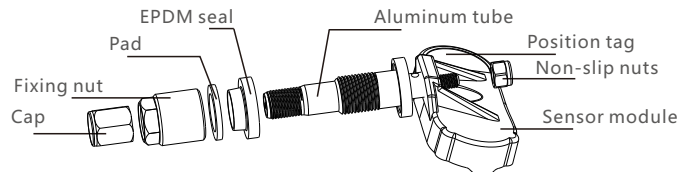
| Installation Guide |



1, Installation of internal sensor

A, Components of internal sensor

- **Sensor x 4**



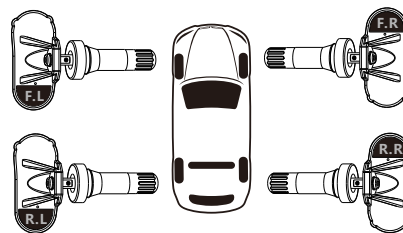
- **Wheel sticker x 4**



B, Installed sensor corresponding to tires' position

ID code of four sensors are configured.
You only need to install sensors correspond to tire position.

Installation position shown below:



• Please install sensor per sensor's position tag

C, Internal sensor installation

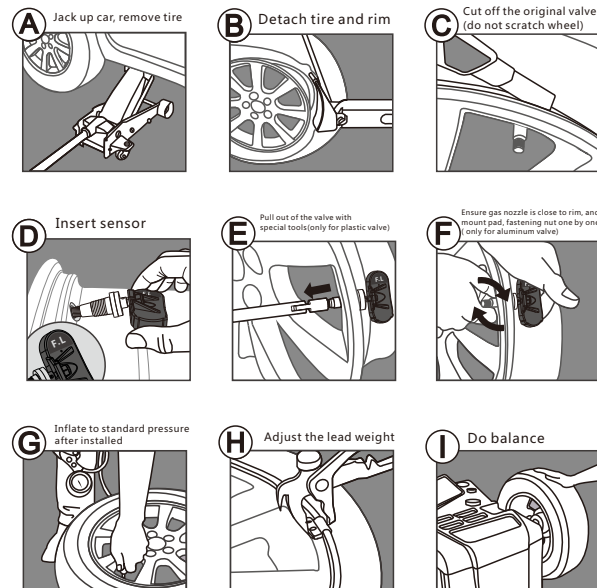
Please install configured receiver and sensors.
If there is wrong ID code or mix position of sensor,
please refer "learn code by inflate&deflate"
(detail please refer to use manual of receiver)

* Please make sure receiver is open when installing sensor,
in this way, data could be sent to receiver immediately once sensor installed.

Detail process:

- 1, Remove the tire from vehicle, detached tire and rim, then clean inside of tire and rim.
- 2, Select internal sensor, which is assembled (sensor + valve) in advance, of corresponding tire's position
- 3, Install internal sensor accompanied with valve, make sure there is gap between sensor module and wheel.
Instead original valve with internal sensor, then put pad around valve and fasten fixing nut. shake the valve gently up and down to make sure sensor closed to wheel finally screw fixing nut by tool.
(install sensor with plastic valve is same as install normal valve, just using tool to pull out valve. Please pay attention there is distance between sensor module and wheel)
- 4, Inflate tire after installed sensor, and check leakage by using foam, ensure no leakage
- 5, Adjust lead weight and do balance of wheel
- 6, Installation other sensors by same method

2, Picture of installation sensors



3,Parameter of internal sensor

Battery life	>5years
Working voltage	2.1V-3.6V
Storage temperature	-45°C-125°C
Working temperature	-40°C-120°C
Temperature accuracy	±2°C (25°C)
Working pressure	0-99Psi
Pressure accuracy	±1.5Psi
IP	IP67
Transmit power	<10dBm
Transmit frequency	433.92 MHz
Dimension	70mm*53mm*20mm
Weight	≤30g(weight exclude valve 16g)

4,Warranty

Warranty is 1 year counted from buying date (not include periodically consumable part). if the product failure under normal operation, We will provide free replacement or repair during the period of warranty. We reserves the right to change new products or other equivalent product.

Exception to warranty:

- 1,Don't follow user manual to operate product
- 2,Product damaged because of accident,neglect,abuse,misuse
- 3,Repair without authorization.
- 4,Damaged due to transportation
- 5,Ther damage not because of design,technical,manufacturing and quality problem

All failure products should be sent to us or our authorized repair center, attached with detail description of defect and show original purchase invoice. Warranty card is effective only in purchased country. This warranty is restricted to above conditions, we will not responsible for the damage related to our products (like tire explosion). This warranty provides you specific legal rights, but may also varied different rights for other countries.

Please find warranty card in specification of receiver.

FCC Statement

Changes or modifications not expressly approved by the party responsible for compliance could void the user's authority to operate the equipment.

This equipment has been tested and found to comply with the limits for a Class B digital device, pursuant to Part 15 of the FCC Rules. These limits are designed to provide reasonable protection against harmful interference in a residential installation.

This equipment generates uses and can radiate radio frequency energy and, if not installed and used in accordance with the instructions, may cause harmful interference to radio communications. However, there is no guarantee that interference will not occur in a particular installation. If this equipment does cause harmful interference to radio or television reception, which can be determined by turning the equipment off and on, the user is encouraged to try to correct the interference by one or more of the following measures:

- Reorient or relocate the receiving antenna.
- Increase the separation between the equipment and receiver.
- Connect the equipment into an outlet on a circuit different from that to which the receiver is connected.
- Consult the dealer or an experienced radio/TV technician for help

This device complies with part 15 of the FCC rules. Operation is subject to the following two conditions (1) this device may not cause harmful interference, and (2) this device must accept any interference received, including interference that may cause undesired operation.