

This equipment has been tested and found to comply with the limits for a Class B digital device, pursuant to Part 15 of the FCC Rules. These limits are designed to provide reasonable protection against harmful interference in a residential installation. This equipment generates uses and can radiate radio frequency energy and, if not installed and used in accordance with the instructions, may cause harmful interference to radio communications. However, there is no guarantee that interference will not occur in a particular installation. If this equipment does cause harmful interference to radio or television reception, which can be determined by turning the equipment off and on, the user is encouraged to try to correct the interference by one or more of the following measures:

- Reorient or relocate the receiving antenna.
- Increase the separation between the equipment and receiver.
- Connect the equipment into an outlet on a circuit different from that to which the receiver is connected.
- Consult the dealer or an experienced radio/TV technician for help.

This device complies with part 15 of the FCC Rules. Operation is subject to the following two conditions: (1) This device may not cause harmful interference, and (2) this device must accept any interference received, including interference that may cause undesired operation.

Changes or modifications not expressly approved by the party responsible for compliance could void the user's authority to operate the equipment.

Welcome to use all day shot

Bluetooth connection procedure

- ① Long press the power button "🔘" two seconds to open the bluetooth
- ② For the blue lights flashing
- ③ Open the phone bluetooth, search the bluetooth devices
- ④ Click "ADYSS -A8" connected bluetooth devices wait for 5 seconds, the blue light long on matching success



Parameter

The maximum bearing capacity: 500 g

Extension length: 179-785 - mm

Main material: aluminum alloy and ABS plastic

Net weight: 130 g

Frequency of products: 2.4 g

Charging time: 0.5 hours

Brightness: 3

Support: android to iOS

Operating voltage: 3.6 ~ 4.2 v

Battery capacity: 500 mah

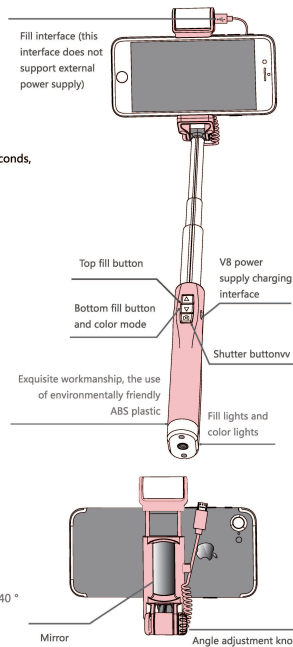
Standby time: 1 year

Working current: 3.5 mA

Working temperature: - 10 ° ~ 40 °

Charging voltage: DC5V

Fill light time: 6 hours



93mm

145mm

A list of supported phone models

🍏 iPhone Series model

iPhone6S Puls , iPhone6S , iPhone6 Plus , iPhone6 ,
iPhone5/5S , iPhone4/4S , iPhone 7, iPone7 Plus,

🤖 Android Series model (Android 4.2.2 The above system)

SAMSUNG : GALAXY A9, S7, S7 Edge, S6, S5, C7, C5,

C9 Pro, Note 5, Note 4, Note 3...

MILLET : 5, 5S, 5S Puls, 红米Note, M4, M3, M2...

HUAWEI : P9, P9 Puls, P8, P7, P6, G621, G620, Mate
Mate 8, Mate 7...

OPPO : R9, R9 Plus, R9s, R9s Plus, R7 R7s R7s Plus
A59, A59s, N3...

VIVO : X9, X9 Plus, X7, X7 Plus, X6, X6 Plus,

MEIZU : PRO 6, PRO 6 Plus, PRO 6S, PRO 5 MX6...

(The above models are measured, the model continues to improve)

ADYSS One-Year Limited Warranty Summary

ADYSS warrants that the hardware products that come with the
original retail purchase date within one year

In the material and process without flaws. ADYSS does not guarantee
for normal wear

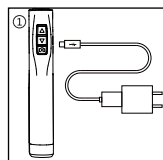
Accident or abuse caused by the damage is not guaranteed. To get
the service, visit ADYSS

Owned retail stores or ADYSS authorized service providers, you can
repair your product as appropriate

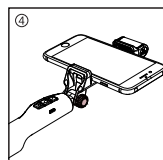
Care, replacement. The warranty interest you enjoy is attached to the
rights provided by the local consumer law

Take advantage of. When you make a claim under this warranty policy,
you may need to provide a purchase certificate

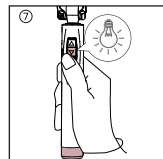
Details of the details.



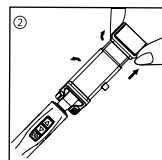
The right handle for the micro
USB charging interface, using
the conventional DC 5V micro
USB charger to charge



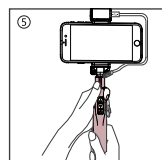
Adjust the angle lock with the
pan / tilt head



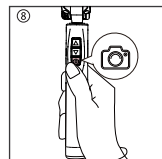
Press the handle "▽", press 1
under the fill light mode to press
a few colorful mode



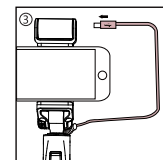
Folder before the phone pull the
upper and lower two silicone gasket,
pull up, into the phone (only 6
inches below the screen phone)



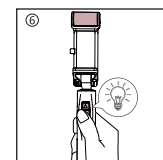
Grip the handle and extend the
length of the lever



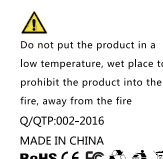
Start the camera function, press the
"📷" button, the shutter button



Fill light use in the installed
phone, the micro USB into the
lamp interface can be inserted
into the light



Press the handle "△", adjust the
brightness by 3 times



Do not put the product in a
low temperature, wet place to
prohibit the product into the
fire, away from the fire

Q/QTP-002-2016
MADE IN CHINA

RoHS CE FC