

**BENSS**

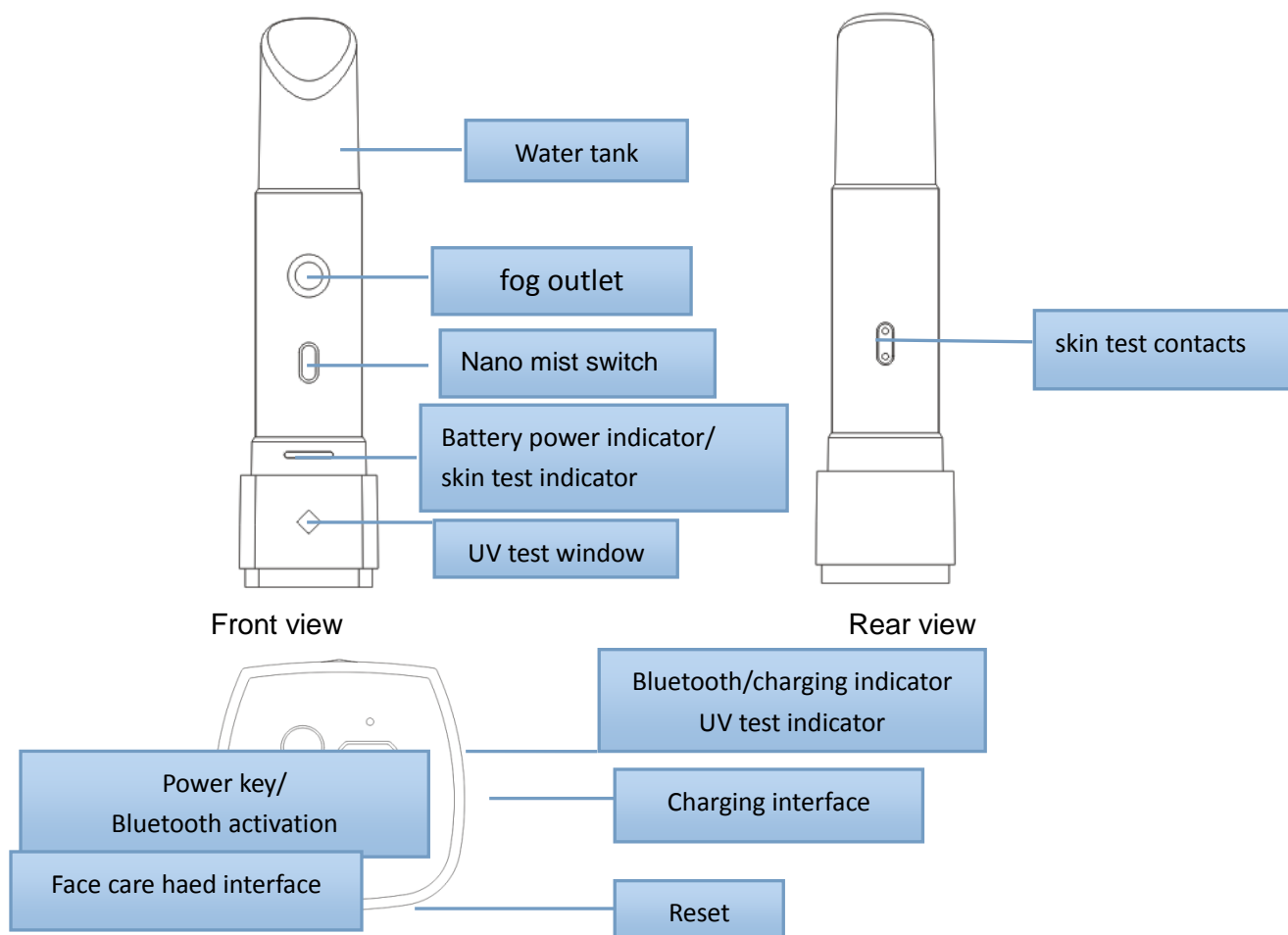


## **Smart Portable Facial Mist**

### **SPA001 User manual**

Thank you so much for use Intelligent Facial mist, kindly please read these instructions for use carefully and keep them for later use , also let you know function and operate method quickly .

#### **一、（Device description）**



## 二、Included in delivery

- 1 Intelligent facial nano mist
- 1 Skin care massage head accessories
- 1 Water bottle
- 1 USB line
- 1\*Base protection silicone case

## 三、Technical data

Name: Intelligent skin care nano facial mist

Model: SPA001

Size: 137.3\*32.2\*32.5 mm accessories: 45\*32.7\*32.3mm

Function: Nano-spray、skin care、skin moisture/oil test、outside UV test

Water tank volume:15ML

Battery capacity:460mAh

Input:DC 5V/500mA

## 四、APP download and install

Scan QR code and download mango beauty APP, Please install by mobile phone or other mobile devices, The current support Andriod system and IOS system, please download corresponding APP software according mobile phone type.



## 五、Initial use

### （一）Charging

- First time charging around 2.5 hours
- Please make sure product powered off after finished using
- Please use the product match the charging line, Connect one end of the data cable to the charging connector, another USB connect with plug , finally plug into the charging socket
- Bottom work indicator flashing red light during charging , wil still keep red light after finished charging

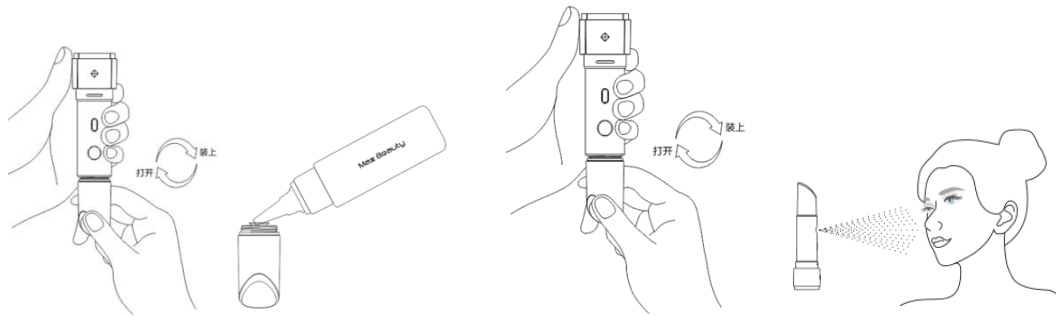
### （二）Key operation Instructions

- Short press the power key, bottom blue indicator light, then start to use it
- Bluetooth activation: during product boot state, short press power key, bottom blue indicator light flashing , short press power key again can close bluetooth , bottom blue indicator keep still light.
- Long press the power key , bottom blue indicator light off means product stop working

## Operating Instructions

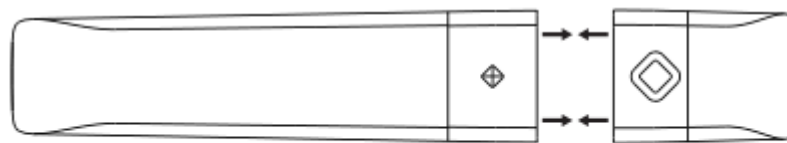
### Nano spray

- Take out tank: Open the product cover and tank cover , rotate the tank in a anticlockwise direction
- Put water/toner into the tank , kindly please noted small bottle mouth have to align the tank inlet , so as not to spill water in the tank outside.
- Install the tank: After the tank is filled with water/toner, rotate the tank in a clockwise direction , pls make sure water tank rotates assembly, then start to use it.
- Short press nano mist switch then start to moisture skin , move product can replenish the different parts of the face, After finished using , just close press nano mist switch.



## 2、Facial care

- Turn on switch power, remove massage care accessories to the product at the bottom of the matching direction, Product adopts magnetic suction mounted design and simple and convenient installation.



磁吸式

- Short Press Care Accessories button to begin nursing, total three mode , cleaning face , absorption nutrition quickly, moisture skin, every 3 minutes automatically switch the next mode, short press can also switch care mode, long press off the care function



图 5

## 3、Skin moisture oil detection

- Short press power key, bottom Blue indicator light flashing, open mobile phone bluetooth function connect with APP .
- Open Mango APP , select the skin test in test bar ..shake the connection device, Bluetooth indicator light will bright once finished connect..
- Choose skin test function , please keep skin touch with test contacts, wait some seconds then finished test , will be display moisture of skin , oil and elastic.

(三)

## Outside UV detection

- Short press power key, bottom Blue indicator light flashing, open mobile phone bluetooth function connect with APP .
- Open Mango APP , select the UV test in test bar, shake the connection device, Bluetooth indicator light will bright once finished connect.
- The Ultraviolet sensing window is targeted at the sunlight, click to start testing, waiting for a few seconds after the data is completed

(四)

### Note

- Do not use viscous and relatively large concentrated particles liquid, Recommended distilled water and the not high purity/viscosity spray cosmetics, like pure water, distilled water, Estee Lauder Nutritious Vitality8 Radiant Energy Lotion Intense Moist , Vichy Springs Mineral Water Toner, Avene Soothing Toner, LANEIGE Essential Power Skin Refiner Light, SK-II Facial Treatment Essence and so on
- Do not use spray at the eyes and mouth, so as not to spray the liquid into the eyes and mouth.
- Please gently shake the equipment up and down If there is no spray during the water treatment, so that the tank can flow liquid.
- Please keep touch skin test contacts well, and face not makeup. So that can get accurate data
- Please keep UV test window full of targeted at the sunlight, So that can improve accurate data

### Warning

- Do not disassemble, repair, modify the product by yourself,, may cause accidents and malfunctions.
- Do not put product rain or damp, placed in the cup, cosmetics and other containers with liquid next to the liquid to avoid infiltration of the product
- Do not put product on the place which children can contact ,
- Do not drop the product from the height, to avoid damage the product function.
- Do not place the product near flammable and explosive materials.

### Warrenty card

Cutomer Information

Name----- Phone number----- Email-----

Address-----

Product information

Model----- Code-----

Date of purchase----- Rework date-----

-----

## FCC WARNING

This device complies with part 15 of the FCC Rules. Operation is subject to the following two conditions: (1) this device may not cause harmful interference, and (2) this device must accept any interference received, including interference that may cause undesired operation.

Any changes or modifications not expressly approved by the party responsible for compliance

could void the user's authority to operate the equipment.

NOTE: This equipment has been tested and found to comply with the limits for a Class B digital device, pursuant to Part 15 of the FCC Rules. These limits are designed to provide reasonable protection against harmful interference in a residential installation. This equipment generates, uses and can radiate radio frequency energy and, if not installed and used in accordance with the instructions, may cause harmful interference to radio communications. However, there is no guarantee that interference will not occur in a particular installation.

If this equipment does cause harmful interference to radio or television reception, which can be determined by turning the equipment off and on, the user is encouraged to try to correct the interference by one or more of the following measures:

- Reorient or relocate the receiving antenna.
- Increase the separation between the equipment and receiver.
- Connect the equipment into an outlet on a circuit different from that to which the receiver is connected.
- Consult the dealer or an experienced radio/TV technician for help.

The device has been evaluated to meet general RF exposure requirement. The device can be used in portable exposure condition without restriction

**FCC ID: 2AMWI-SPA001**