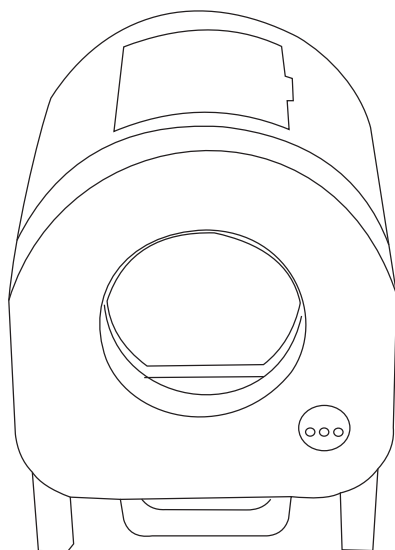


Smart Cat Litter Box

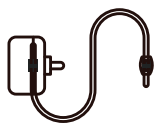


Instruction Manual

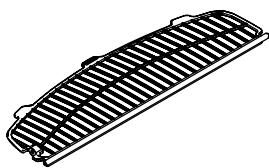
Pack List



Host Machine X1



Power Adapter X1



Filter Screen X1

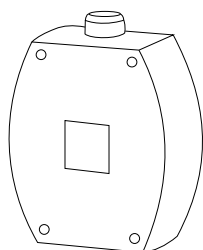


Garbage Bags(1 roll)

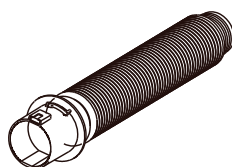


User Manual X1

Optional Part



Fan

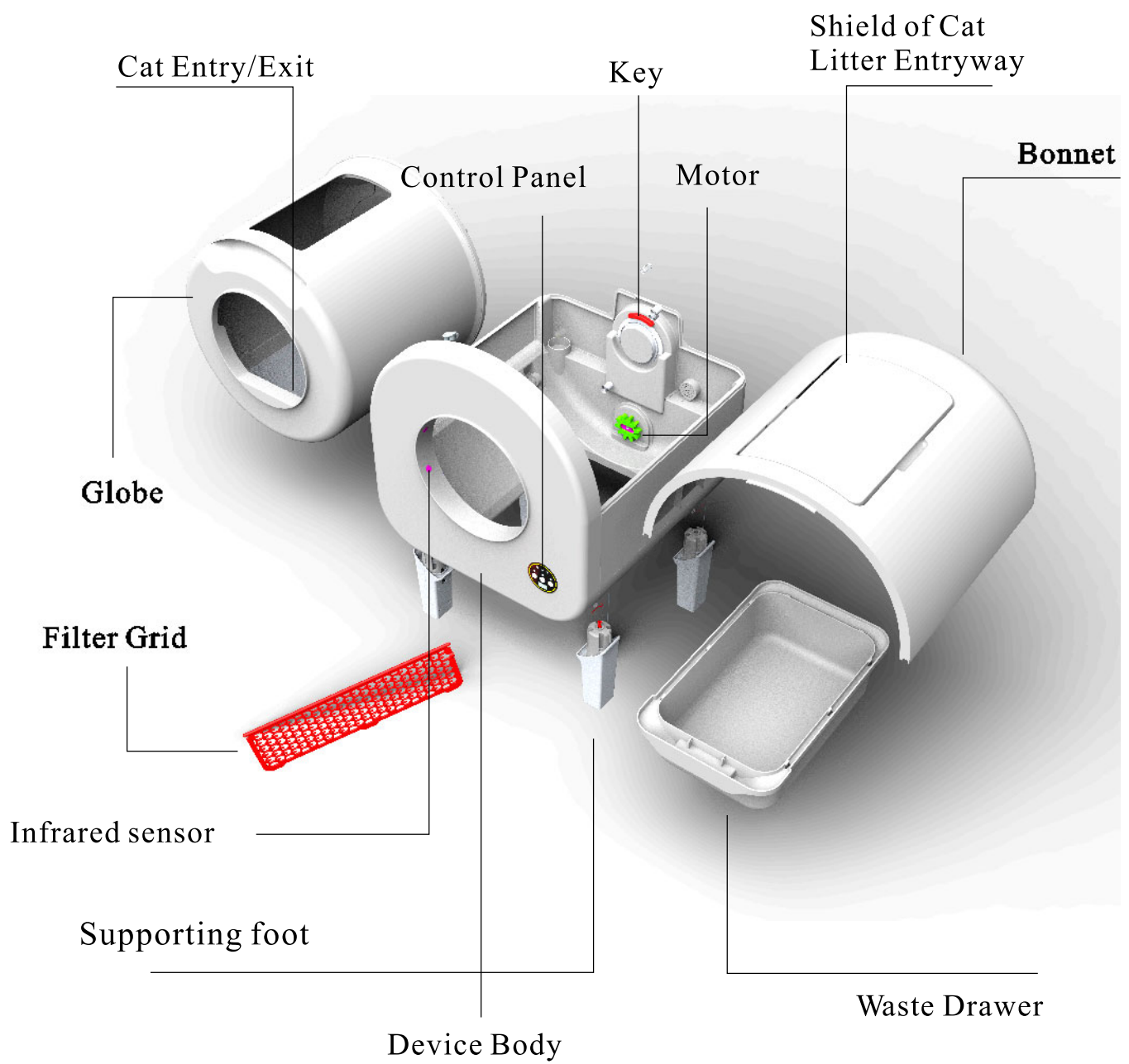


Air Duct

3. Important Safety Instructions

- 1). Always be sure any cat in your household that might use the Robotic Litter Box weighs at least 1.5KG.
- 2). Always place the Smart Cat Litter Box on a firm, level surface. Avoid soft, uneven, or unstable flooring, which may affect the ability of the device to detect your cat.
- 3). Always unplug the device before servicing.
- 4). Never force your cat into the Smart Cat Litter Box.
- 5). Never put anything in the device other than clumping litter.
- 6). Never sit on or place anything on top of the Smart Cat Litter Box.
- 7). Never push the Smart Cat Litter Box against a wall or into a corner (must not be touching any walls).
- 8). Never remove the Globe or Bonnet while the device is rotating or turn the device on if the Globe or Bonnet is removed.
- 9). Never wet or submerge the Bonnet or Device Body.

2. Product Components



5. Setting Up Your Smart Cat Litter Box

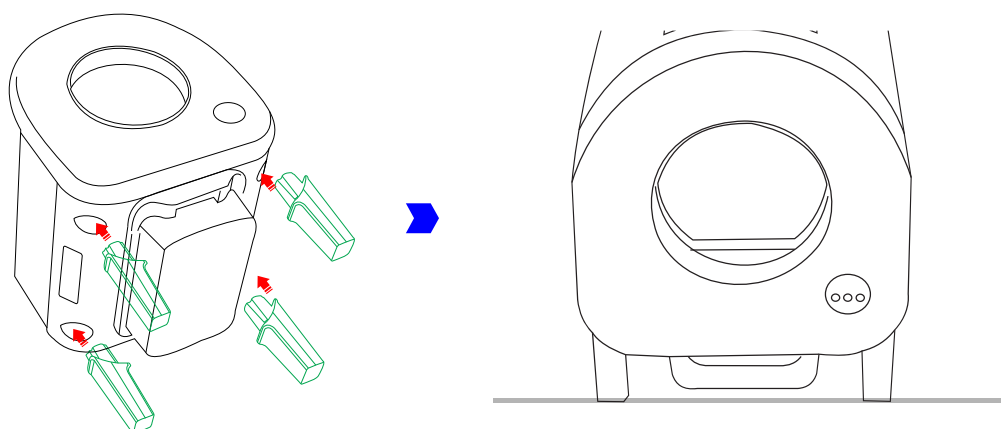
1) Unpacking your Smart Cat Litter Box

Install the disassembled supporting feet into the device

Place the device horizontally on a level, firm surface.

Placement

- If possible, place the Smart Cat Litter Box in the same location as the old litter box (at least during transition).
- Make sure the device is on a firm, level surface. Avoid soft, uneven, or unstable flooring. If unavoidable, place a hardwood board or metal plate on the soft floor to ensure its normal operation
- Keep the device indoors in a cool, dry location.
- Reduce exposure to high temperature and humidity.
- Locate the device near a power outlet, if possible, near a window to conveniently place the exhaust pipe towards outside
- Ensure the device isn't pushed against a wall or into a corner (must not be touching any walls).
- Place mats or rugs directly in front of, but not under the device. Do not place mats partially under the device.

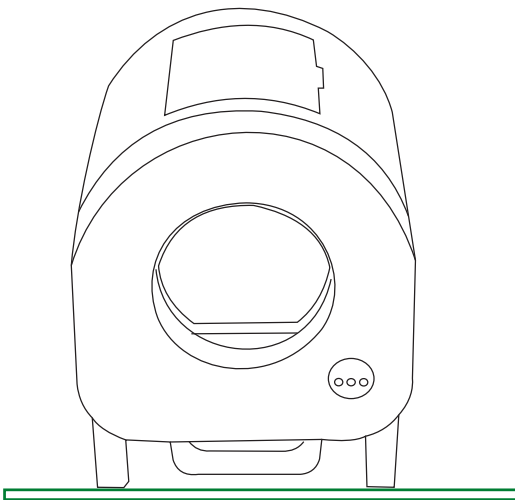




Excellent Wi-Fi network environment

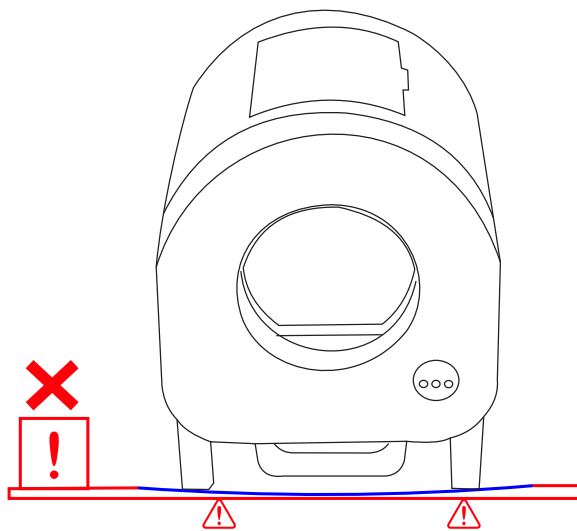


Poor Wi-Fi network environment



Hard surfaces such as floors

Recommended



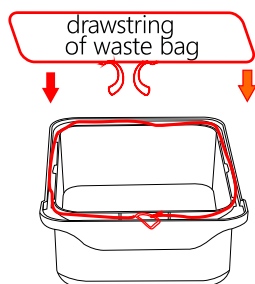
Soft surfaces such as carpets and mats

Not recommended

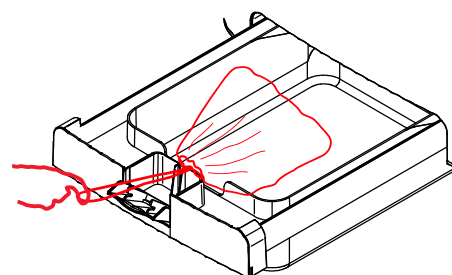
2) Quick Setting Up

Step 1: Pull out the waste drawer

Step 2: Put on the waste bag



(Figure1)



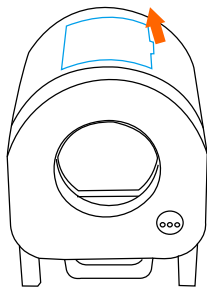
(Figure2)

Lay the waste bag on the Waste Drawer, and place the drawstring into the drawstring box (Figure 1)

If the Waste drawer is full, please open the drawstring box, and pull the drawstring, the cat waste can be wrapped by the waste bag, so pull out the Waste Drawer, and then take out the waste bag. (Figure 2)

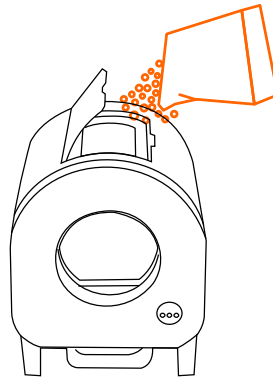
Step 3: Push the Waste Drawer back

Step 4: Fill cat litter into the Globe



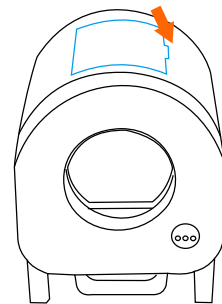
Step 1

1) Open the top cover



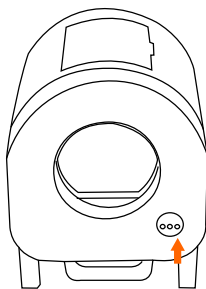
Step 2

2) Add appropriate amount of cat litter





Step 3

3) Close the cover



Step 4

4) Press and hold  to activate the unit.
Press and release  to level the cat litter

Cat Litter

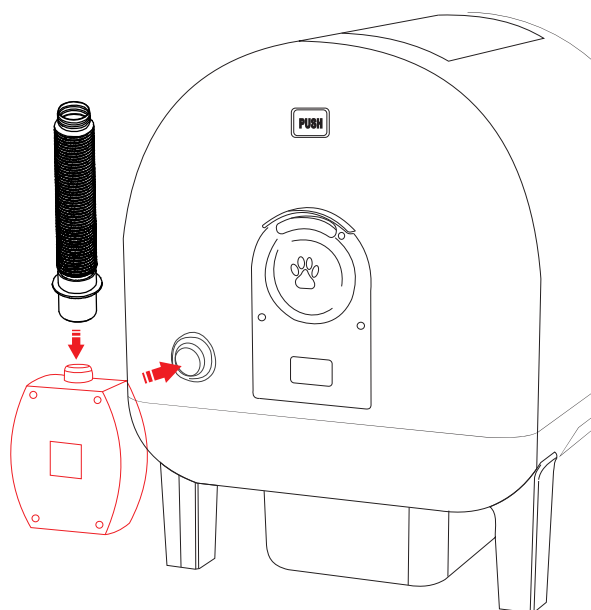
(1)The litter sifting system requires clumping litter to work properly. We recommend a high quality clay clumping litter. Litter beads and crystals that are small enough to pass through the screen will also work (periodic changing of this type of litter is required).

(2)DO NOT use litters that are the strictly absorbent, nonclumping, loose-clumping, newspaper-based, or wood-based pellets.

Tip: When filling the Smart Cat Litter Box for the first time, it is best to continue using the brand of litter you were using previously — as long as it is a clumping type of litter. Your cat will need to adjust to the new litter box, and introducing a new litter at the same time may increase its anxiety. However, if you are currently using a non - clumping litter, you will need to switch to a clumping type

Exhaust fan/exhaust duct connection and installation:

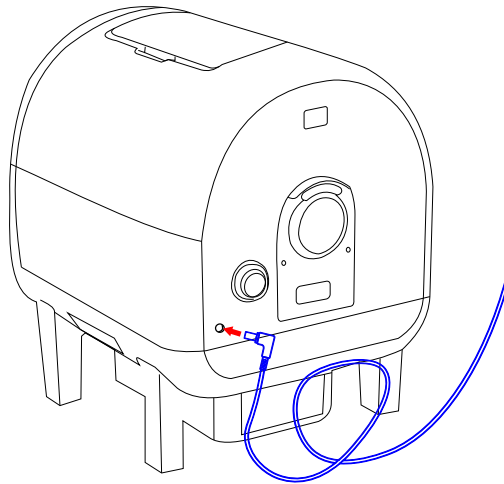
- 1.Remove the rubber plug from the interface of the exhaust fan on the body.
- 2.Align the exhaust fan interface with the body interface and insert it.
- 3.Rotate clockwise to lock the exhaust fan.
- 4.Insert the exhaust duct into the exhaust fan interface and lock it by rotating counterclockwise.



- Step 6: Connection of Power Adapter

Plug the small end of the Power Supply into the socket at the back of the device.

Then plug the AC/DC adapter into a wall outlet.



- Ready to use

After power on, the device will perform an initial self-check cycle that will last about 3-5 minutes. Your Smart Cat Litter Box is now ready to use; however, we recommend powering the device off until your cat/s become familiar with it and begin using the Smart Cat Litter Box.

3) Introducing Your Cat to the Smart Cat Litter Box

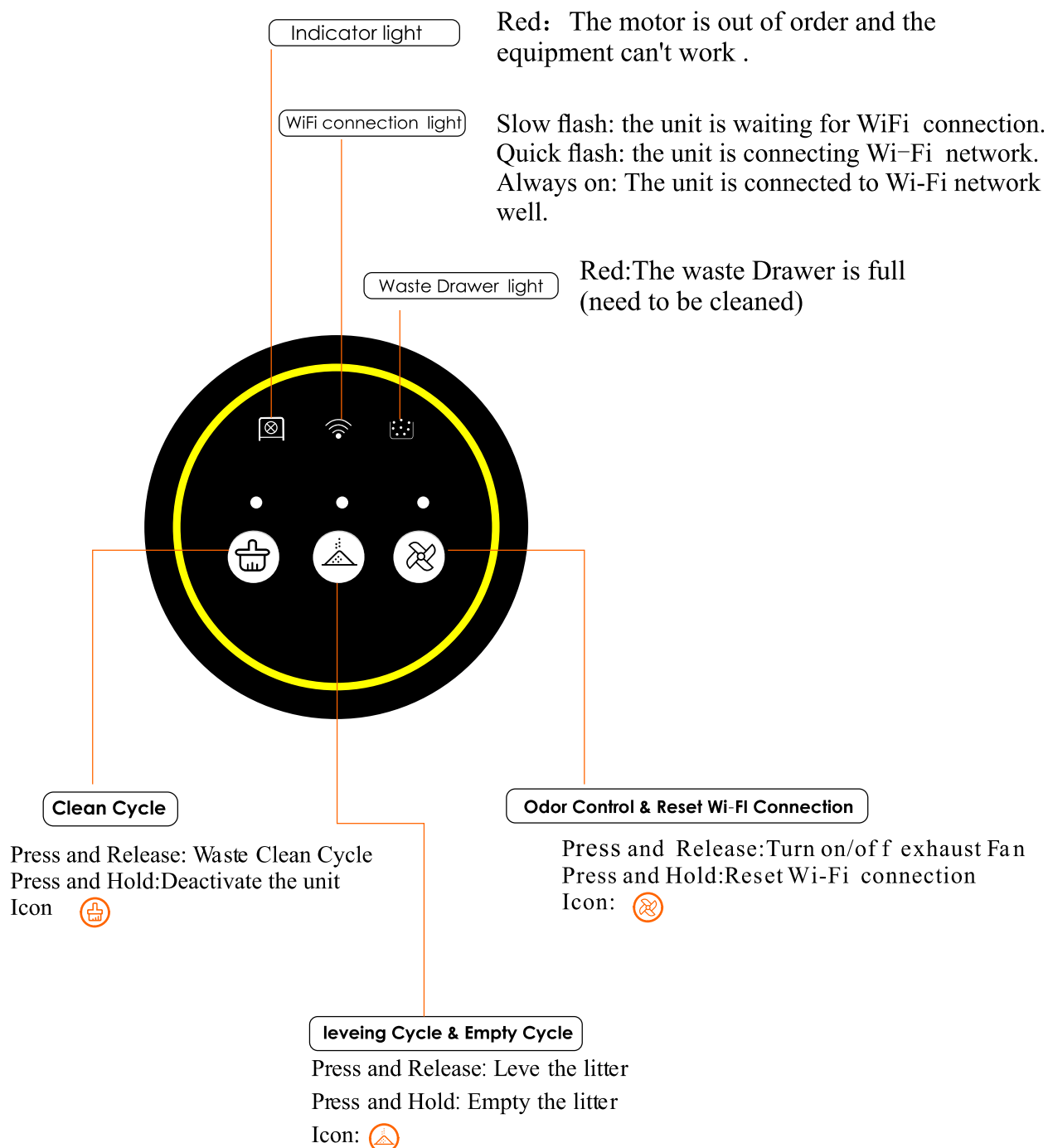
Most likely, your cat will quickly adapt to the Smart Cat Litter Box. Here are some ways to facilitate the transition:

- Place the Smart Cat Litter Box in the same location as the current litter box, set it up (make sure you fill litter into the Globe), and make sure it is turned off.
- Give your cats a day or two to explore the Smart Cat Litter Box. If your cats show no interest, entice them to approach the Smart Cat Litter Box by using some catnip or a favorite treat.
- Add a scoop of litter from the old litter box to provide a familiar scent for your cat.

- Place treats around the Smart Cat Litter Box so that your cat associates rewards with the device
- Once you notice that your cats have used the Smart Cat Litter Box, power the device on to cycle the device. Encourage your cats to be present, so they can observe the motion and become familiar with the sound of the Smart Cat Litter Box while you are there to reassure them. Turn the device off again once the cycle is complete (the Smart Cat Litter Box should be in the Home position). We recommend that you no longer clean the old litter box once your cats have used the Smart Cat Litter Box.
- If your cats are not using the Smart Cat Litter Box within a few days, continue using the old brand of litter in the old litter box, and let it go as long as possible without cleaning it. Cats prefer a clean litter box and a dirty litter box might persuade them to use the clean Smart Cat Litter Box. Also consider replacing the litter in the Smart Cat Litter Box with a litter specifically formulated for litter box training.
- Once your cats are consistently using the Smart Cat Litter Box, you can turn the device on and leave it on to operate in Automatic Mode—and remove the old litter box. Congratulations, you have successfully introduced your cats to the Smart Cat Litter Box. Enjoy your freedom from scooping!

6. Control Panel – Button Functions

If no operation longer than 60 seconds, the control panel will be locked out automatically to disable button functions to prevent unwanted changes



1) Clean Cycle

Clean Cycle After your cat leaves the Globe, the Smart Cat Litter Box automatically performs a Clean cycle. The patented sifting system separates the clumps from the clean litter and deposits them into the Waste Drawer below. It takes about 2 ½ minutes. You can also press the CleanCycle button to start a Clean cycle. During a Clean cycle, press any button to pause the cycle. Press the Cycle button to resume the cycle.

How it works: The Smart Cat Litter Box is ready for use when the Globe is at the Home position and the blue light on the Control Panel is on. When a cat enters the Globe, the infrared sensors & Cat Sensor is activated. Once the cat exits the Globe, the countdown to a Clean cycle begins. When the Wait Time (see page about more settings of APP) has elapsed, a Clean Cycle begins. The Globe rotates counterclockwise. During rotation, a weight behind the rubber Globe liner causes the liner to fall away from the Globe to ensure any stuck-on clumps are removed. The Filter Grid passes through the litter, separating the clumps from the clean litter. The clean litter is collected in a chamber behind the Filter Grid. As the Globe rotates to Dump position, the waste clumps fall through the Waste Port into the Waste Drawer. The Globe then rotates clockwise, toward the Home position. The Globe liner will fall back into place and the clean litter will spill back into the litter bed. The Globe will rotate past the Home position to level the litter before finally returning to the Home position. If your cat re-enters the Globe during the Wait Time countdown, the infrared sensors & Cat Sensor detect that weight and will not cycle with your cat inside. Once your cat exits, a new countdown will begin.

2) Empty Cycle

The Empty cycle allows you to empty all of the litter from the Globe into the Waste Drawer for easy disposal. Use this cycle to change out the whole bed of litter or before cleaning the Globe. Press the leveling & Empty button to start an Empty Cycle.

How it works: The Globe rotates clockwise. As the Globe rotates, the litter will fall through the Waste Port into the Waste Drawer. After the litter is emptied, the Globe will stop and await your action. (You may need to sweep any remaining litter toward the Waste Port.) Press any button to return the Globe to the Home position.

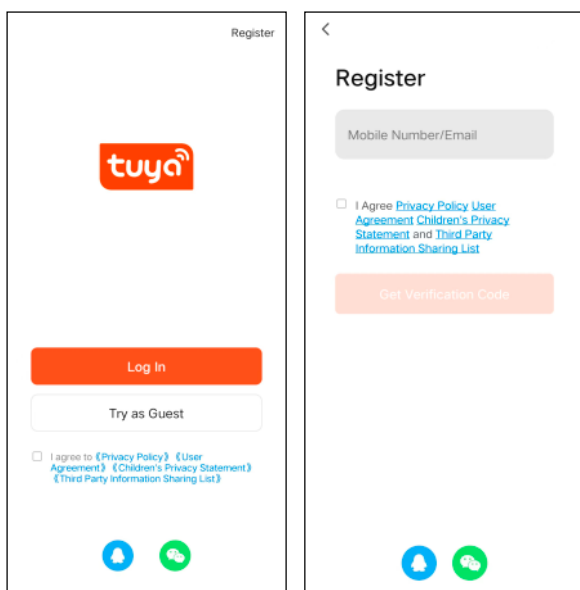
7. Wi-Fi Connection & APP Functions

1) Download and install the Tuya app from App store or GooglePlay, or scan the QR code below, and register your user account

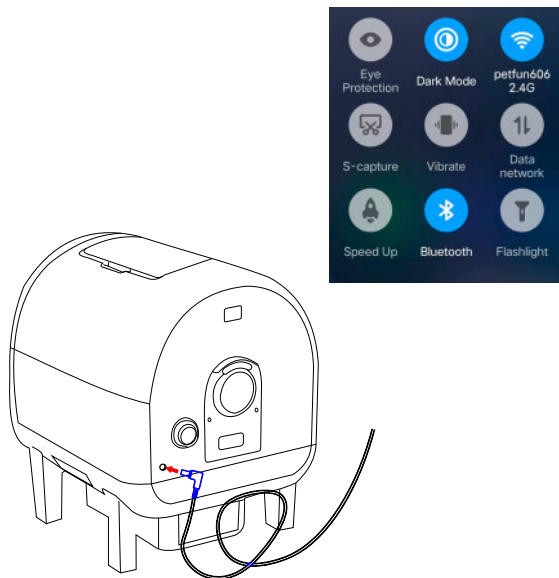



Tuya Smart

2) Turn on the Bluetooth and Wi-Fi connection on your phone, and make sure that your phone is connected to Wi-Fi



After the installation of Tuya App please register your user account.



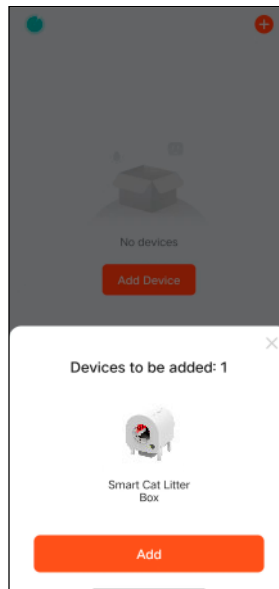
1. Turn on the Bluetooth and Wi-Fi connection on your phone.
2. Make sure the power on.
3. Press and Hold the button  to reset Wi-Fi connection.

3) Connect the device to Wi-Fi

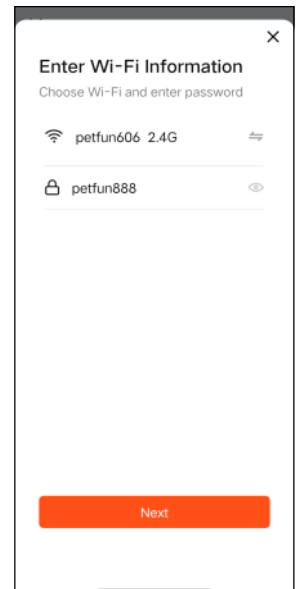
1. Open Tuya Smart App



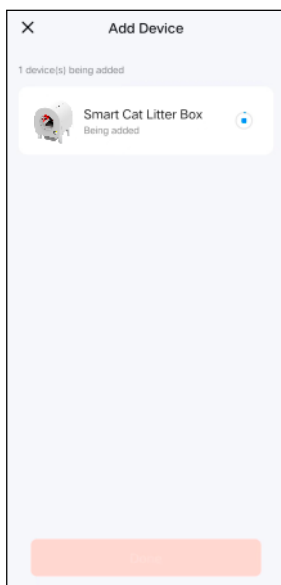
2. Bluetooth will automatically search and find the device, click “Add”



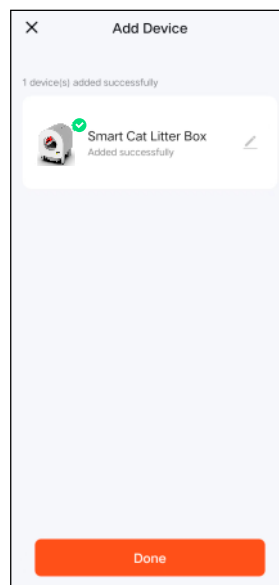
3. Enter correct Wi-Fi user name and password



4. Connecting



5. If successfully connected, click “Done”



6. The main function page



4 Solutions to Wi-Fi connection failure

To make sure that your local Wi-Fi network works well, you can check it by connecting other mobile devices to the local Wi-Fi network

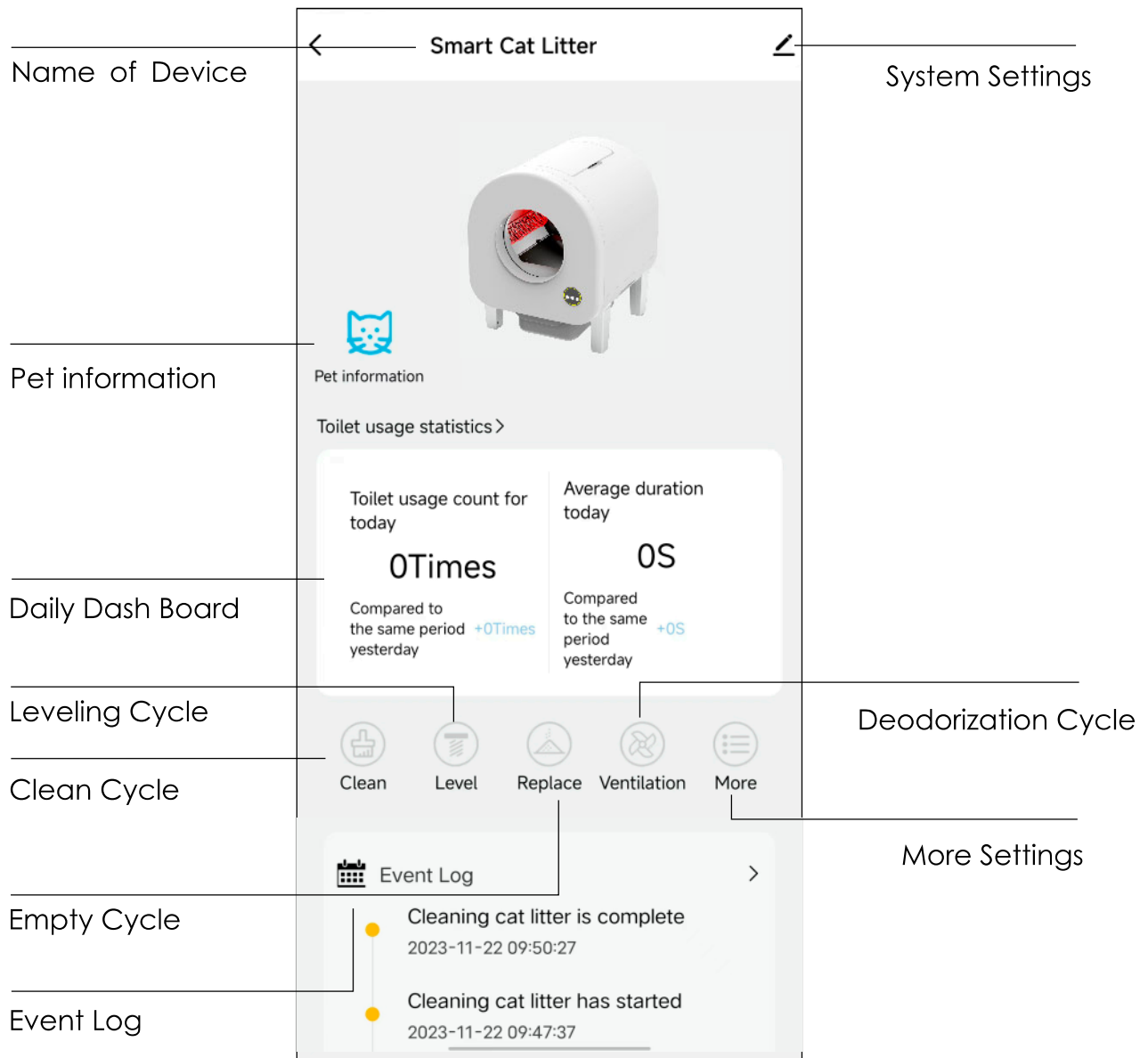
To make sure that your mobile phone is connected to Wi-Fi, and Bluetooth is on

To check that the Smart Cat Litter Box is still in pairing model of network. If the Wi-Fi indicator light on control panel is slowly flashing, it indicates that the device is waiting for connecting to Wi-Fi network. If the Wi-Fi indicator light on control panel is rapidly flashing, it indicates that the device is connecting to Wi-Fi network.

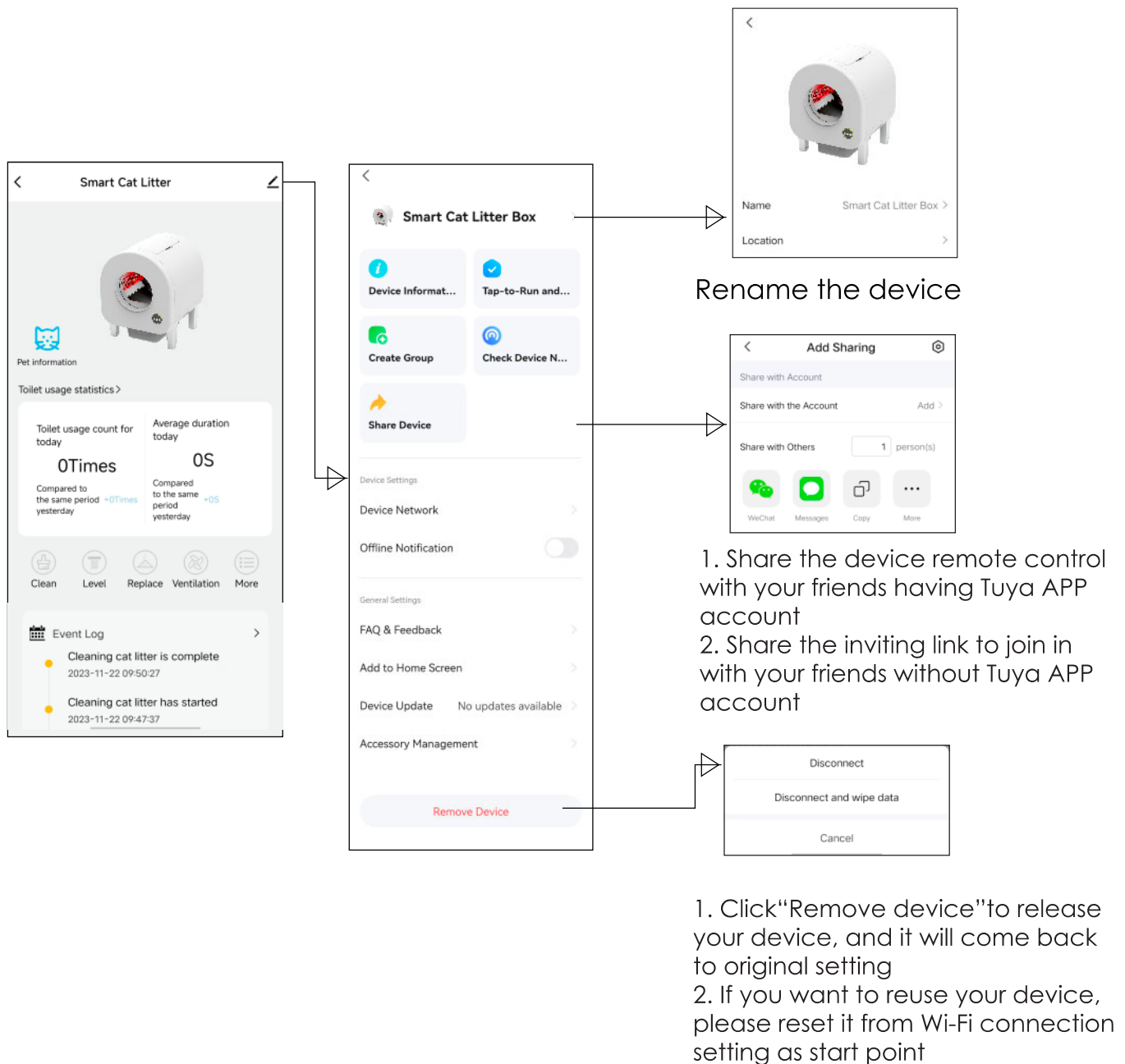
To make sure that you have entered the correct Wi-Fi user name and password. Please double-check them.

Notes: Please don't forget to press and hold the button on the control panel at first, and then start to configure the Wi-Fi connection at the Tuya Smart APP

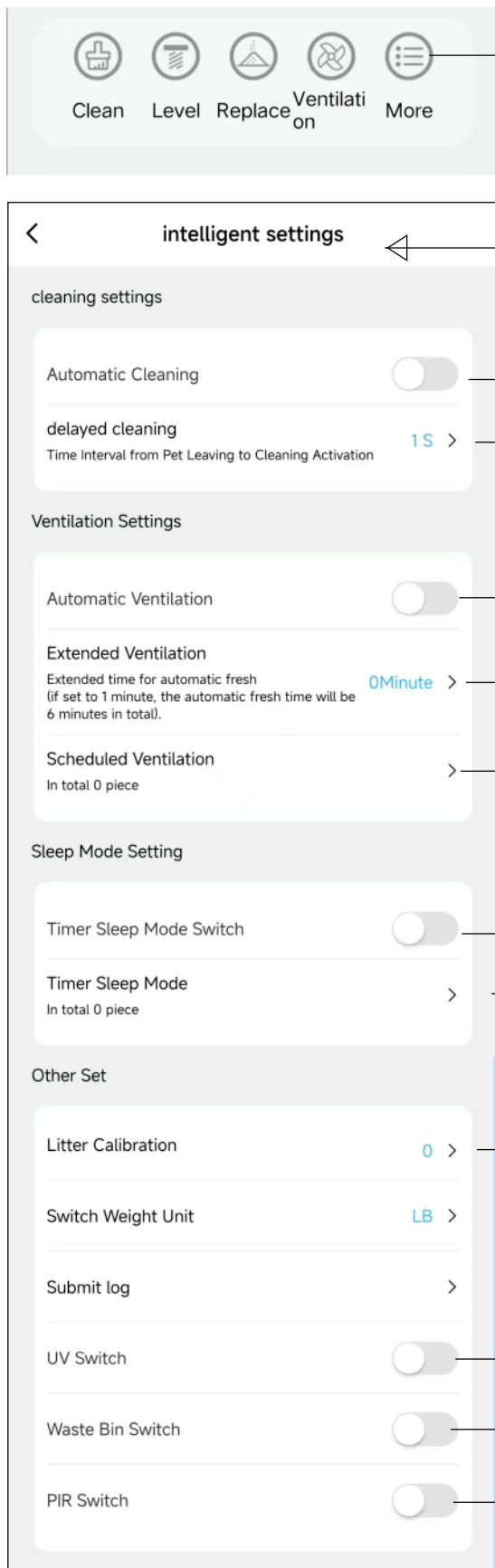
5 The Main function page of APP



6 APP Functions of Device Management



7. APP Functions of More Settings



Please make sure that the “Auto Cleaning” button is on

The “Delayed cleaning” refers to the Wait Time, which is the elapsed time starting from when your cat exits the Globe until the device starts a Clean Cycle. It can be set for different levels. Reduce the Wait Time if it is important to minimize odor and/or the time that waste is available to other pets—such as dogs. However, reducing the Wait Time may reduce the cleaning effectiveness if clumps do not have enough time to set up. Extend the Wait Time when using a lower quality clumping litter that needs more time to set up.

Make sure that you have already installed fan and exhaust pipe properly, and then you can activate the automatic ventilation function by turning on the “Automatic Ventilation” button

Extended ventilation refers to extending the duration of ventilation. The default duration time of ventilation is set to 5 minutes. If you set the Extended Ventilation to 1 minute, so the total duration time of ventilation will be 5 minutes + 1 minute

Scheduled ventilation refers to regular ventilation scheduled by you.

Turning on Negative Ion Switch refers to activating disinfection and deodorization by Negative Ion.

In Sleep Mode, the Infrared Sensors and Cat Sensors will be deactivated for a specific period and the device will only cycle if you press button on control panel or APP. Immediately after the specific period, the device will perform a Clean cycle, then return to the Home position. The sensors will be active again. Once set, the specific period repeats every 24 hours. The start of the period is determined by when the mode is set initially.

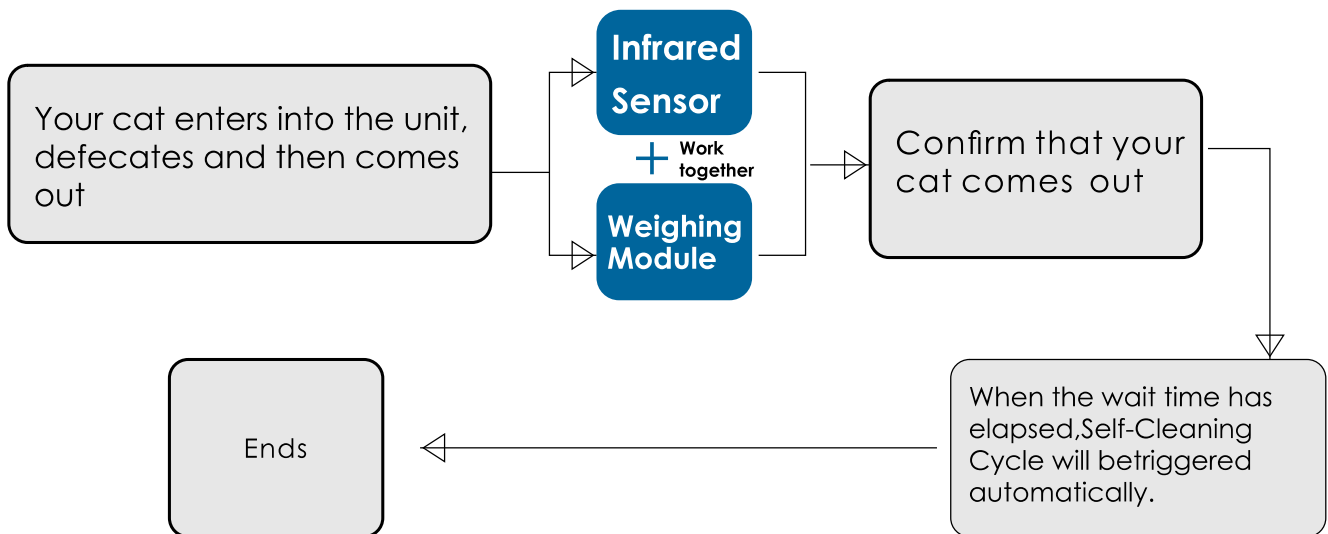
When the cat litter surface is uneven, the angle of the litter surface can be adjusted.

Turn on/off UV sterilization

Turn on/off Waste bin sensor

Turn on/off PIR sensor

8. Self-cleaning and Automatic deodorization Process



9. Ongoing Maintenance

Please keep the Cat Entryway clean, if any dirt or pet hairs, please remove it immediately to ensure the infrared sensors works well.

Please empty the Waste Drawer immediately before Drawer Full Indicator light (DFI) light will be red soon.

Cleaning the Globe

1. Press the Empty button to cycle the Globe clockwise, which will allow the litter to fall through the Waste Port and into the drawer for easy disposal. Sweep any leftover litter toward the Waste Port. Then, press any button to return the Globe to the Home position. Ensure that all litter has been removed from the Globe—wet litter turns into messy clay!
2. Turn the Smart Cat Litter Box off and unplug the device.
3. Remove the Bonnet: Press and release the snap tabs on both sides of the Bonnet, then lift and rotate the Bonnet off of the Globe and carefully set it aside.
4. Remove the Globe: With two hands, lift the Globe off the Base.

5. Clean the Globe with water and a mild soap. There are no electronic components in the Globe that can be damaged by soap and water. If the Globe has become extremely dirty, it can be soaked and cleaned with a water hose or power washer.

6. Let the Globe dry completely before reassembling it to the Base and attaching the Bonnet. For a quick touchup, you can use a disposable towelette to wipe the inside and upper half of the Globe (without removing the litter). The Litter-Robot can be used immediately, since drying is nearly instantaneous.

7. We recommend cleaning the Globe once every two weeks

Cleaning the Waste Drawer

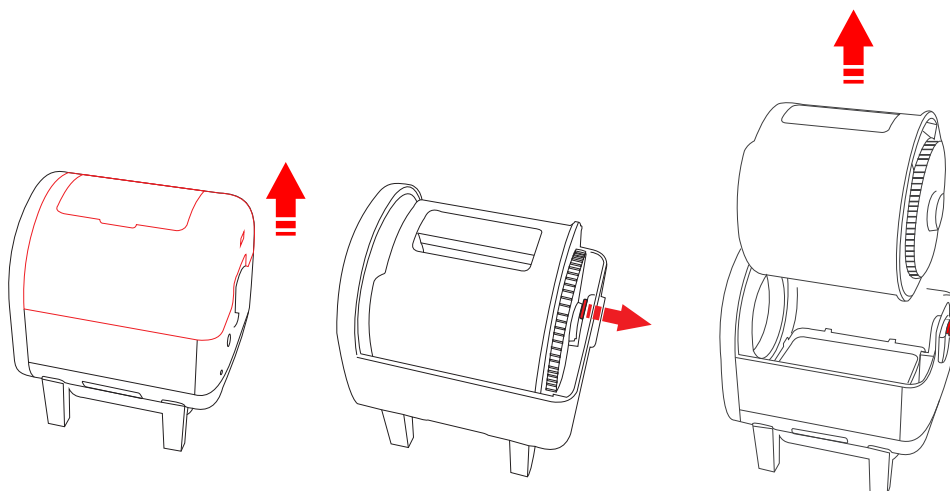
1. Pull the drawer out.
2. Clean drawer with soap and water.

Cleaning the Device Body

- 1) Never submerge or soak the Device Body. The Device Body contains the Cat Sensor and electronics.
- 2) Wipe the surfaces of the Device Body with a cloth dampened with a disinfectant. If using a spray, spray away from the Device Body directly onto a cloth or paper towel, so disinfectant does not get on the electronics.
- 3) Do not use bleach

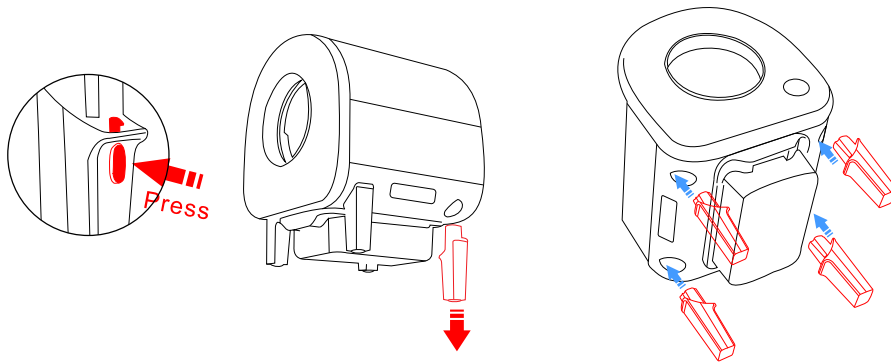
How to disassemble the Globe?

- 1) Remove the Bonnet
- 2) Move the Globe backwards to unlock it
- 3) Lift the Globe



How to disassemble and assemble the supporting feet

- 1) Remove the supporting foot by pressing the switch
- 2) Push it into the hole until the limit switch locks it in place



10. Self-Check process and other Important Notes

The device will start the self-check process whenever power is restored, please wait for the end of self-check process patiently

We recommend activate Clean Cycle, Leveling Cycle and Empty Cycle one by one manually to ensure they can work well

If Deodorization Cycle can't work well, please check that the exhaust pipe has been installed properly, especially rotate it clockwise until locked. And then press the "Fresh" button to check that the fan can work well

Before you want to manually operate the Control Panel, Please deactivate the "Child Lock" function at first, otherwise the Control Panel can't work

We recommend keeping at least 1 meter distance from the device when it is running in automatic model to prevent your pets from being distracted

Whenever you fill cat litter into the Globe, please activate the Leveling Cycle manually by Control Panel

Please pay more attention to the Drawer Full Indicator Light, and empty it in time

If automatic model, please note the Wait Time before starting to clean

In case of occasional sensor failure, the automatic Clean Cycle can't work. Please manually operate the Leveling Cycle or Clean Cycle to restore the device. Occasional sensor failures don't mean the machine is broken.

11. FAQ

Q: In multi-cat mode, how many cats can be recognized at most?

A: Recognizes up to 5 cats weighing 1–12KG in multi-cat mode

Q: Why does the Smart Cat Litter Box rotate automatically after power on?
Why does the sensor cleaning light turn on without making any settings?

A: Because the device will perform a self-check process when it is powered on again after a power outage, and then the Smart Cat Litter Box will return to the initial position. It will take approximately 2 minutes. After the self-check process, the device will come to the automatic mode, so the sensor light turns on. If you want to change to other models, please adjust it manually.

Q: Why does it take so long to complete a clean cycle?

A: The product is specifically programmed to reduce the speed of the cleaning cycle, as the lower speed reduces noise and saves litter. A standardized cleaning cycle takes about 2 minutes. In addition, cats may be curious about the device and may interrupt the operation of the device when they are in the vicinity of the device, which may also cause the cleaning time to be prolonged. Furthermore, the low speed will also reduce the psychological resistance of some small cats.

Q: Why is there a timeslot of reverse rotation of the device during the cleaning cycle?

A: We define the timeslot of reverse rotation as "sand-saving rotation" which is specifically designed to save cat litter. So, This is a normal product feature

Q: How should I choose the right type of cat litter?

A: DO NOT use litters that are the strictly absorbent, nonclumping, loose-clumping, newspaper-based, or wood-based pellets

Q: Why can't the waste completely fall into the Waste Drawer sometimes when clean cycle ends?

A: Please check that the Waste Drawer is installed properly
Please check that the Waste Bag is laid properly?
Please check that there are too big waste clumps to fall into the Waste Drawe

Q: Why does A little Clean Litter Fall Into the Waste Drawer When rotating?
A: Please fill the appropriate amount of cat litter. If there is too much litter in the Globe, it will be expelled into the Waste Drawer during the first few cycles. Since the waste clumps are removed during each cycle, there is no need to put excessive litter in the Globe.
Q: Do I need clean the Smart Cat Litter Box with water? How often do I clean it?
A: The Globe and Waste Drawer can both be disassembled, and washed with water. It is recommended to clean them approximately every two weeks to maintain a clean toilet environment for your cats
Q: Why would there be any litter left in Globe, even if the device has performed the Empty Cycle to empty the litter?
A: Please check whether the Waste Drawer is full,if full,the litter can' t be successfully emptied into the Waste Drawer.So,Please empty the Waste Drawer firstly,and then lay a new waste bag, and start an Empty Cycle again
Q: Why can' t the device sense properly the change in weight as the cat enters and leaves?
A: Firstly, please check that the Smart Cat Litter Box is placed on a flat, hard surface to ensure the weight sensors can work well. Secondly, please press the "Leveling cycle" button, the weight sensors will recalibrate when the litter is leveled, and sense the weight change again when the cat reenters.

FCC WARNING

This device complies with part 15 of the FCC Rules. Operation is subject to the following two conditions: (1) this device may not cause harmful interference, and (2) this device must accept any interference received, including interference that may cause undesired operation.

Any changes or modifications not expressly approved by the party responsible for compliance could void the user's authority to operate the equipment.

NOTE: This equipment has been tested and found to comply with the limits for a Class B digital device, pursuant to Part 15 of the FCC Rules. These limits are designed to provide reasonable protection against harmful interference in a residential installation. This equipment generates, uses and can radiate radio frequency energy and, if not installed and used in accordance with the instructions, may cause harmful interference to radio communications.

However, there is no guarantee that interference will not occur in a particular installation. If this equipment does cause harmful interference to radio or television reception, which can be determined by turning the equipment off and on, the user is encouraged to try to correct the interference by one or more of the following measures:

- Reorient or relocate the receiving antenna.
- Increase the separation between the equipment and receiver.
- Connect the equipment into an outlet on a circuit different from that to which the receiver is connected.
- Consult the dealer or an experienced radio/TV technician for help.

To maintain compliance with FCC's RF Exposure guidelines, This equipment should be installed and operated with minimum 20cm distance between the radiator and your body: Use only the supplied antenna.