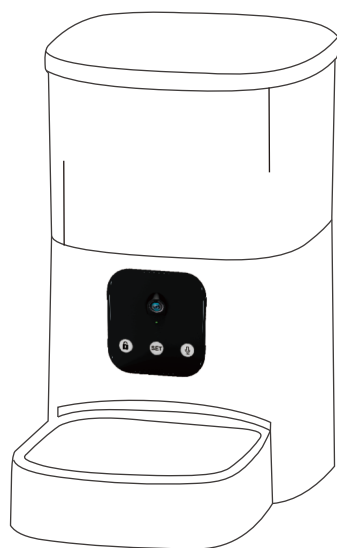
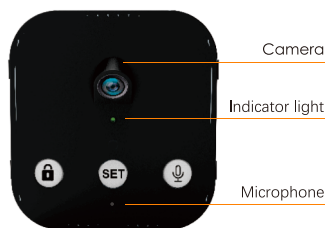


# Smart Pet Feeder(Video) Instruction Manual



Do not use over 5V 2A.  
Your device will be damaged  
and the warranty remains.

## ▶ Control Panel



**Green:**

**Blinking:** the device is waiting for networking, or networking is in progress.

**Always on:** the device is connected to the network .

**Red:**

1. Dry battery power supply;
2. Equipment failure :red light flashing (adapter supply) .

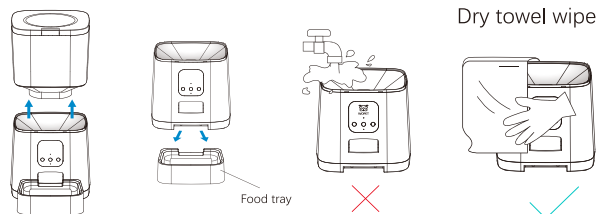
- **Short press:**
  - ★ Feed a single portion
- **Long press:**
  - ★ Long press 5 seconds to unlock/lock. This function prevents your pet to accidentally trigger the function.

- **Short press:**
  - ★ No functions
- **Long press:**
  - ★ Reset the device and disconnect from the network.

- **Long press:**
  - ★ Long press,the device begin recording after"Dl" and ends after"DIDl".
- **Short press:**
  - ★ Short press,the device plays the recording.

## ▶ Dismantle Guide

- ★ Food tray, container, and cover are all removable for cleaning. Dry completely before reattaching.

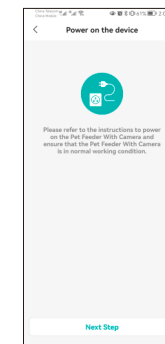
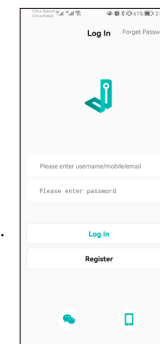


- ★ For the main machine, please avoid contact with water and instead use a damped cloth to wipe it.

## App download and install



Scan QR code to  
download and install it.

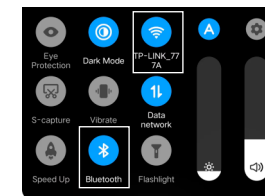
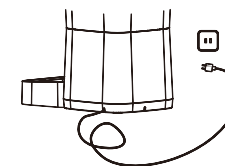


Register Account with Mailbox or Authorized Login after finishing Installing .

**Ready for connect:**

**Power Adapter output voltage : 4.9-5.3V**

- 1.Connect the power cable with feeder
2. Please connect your mobile phone to **2.4G WIFI**
3. Make sure there is a good signal connection between the feeder, mobile phone and WiFi.



**Ready for connect:**

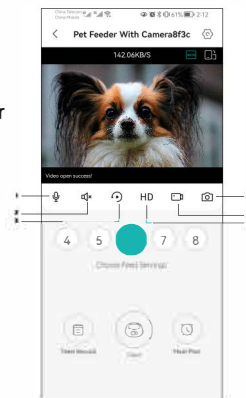
**Power Adapter output voltage : 5V.**

- 1.Connect the power cable with feeder.
2. Please connect your mobile phone to **2.4G WIFI**, turn on the Bluetooth switch .
3. Make sure there is a good signal connection between the feeder, mobile phone and WiFi.

## Connect and Binding the Device

## Video

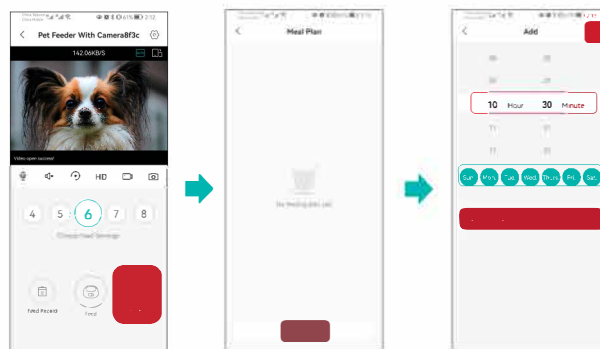
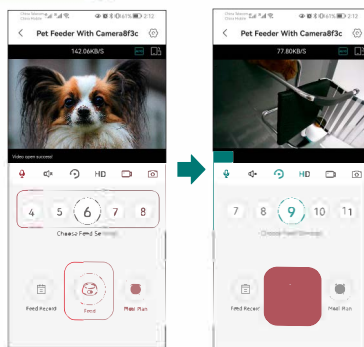
1. Microphone: light up icon ,can give the order to the pet
2. Sound: you can hear the voice of the pet by lighting up the icon.
3. Replay:play back stored photos or videos
4. HD mode
5. Video
6. Take photos



## Feeding

### Manual Feed

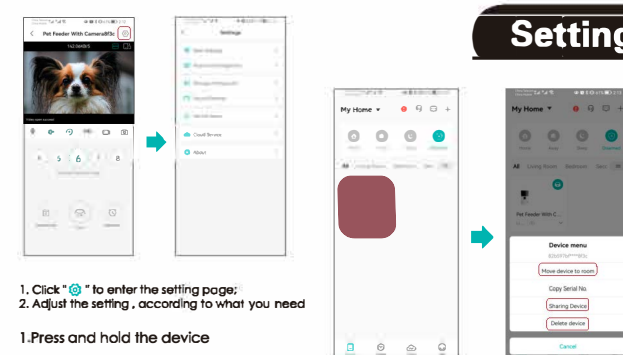
1. Open the video and feeding function interface;
2. Select the number of servings according to the amount of food your pet eats;
3. Click "Feed", the device begins to feed;
4. About 8g per serving;
5. Feeding Records, query historical feeding records.



### Auto Feed

1. Open the video and feeding function interface.
2. Click "Feed Plan".
3. Click "Add ".
4. Set : feeding time, repeat date, and number of feeding servings.
5. Click "✓" to save the Settings.
6. Up to 10 meals a day, and up to 12 servings one meal.

## Setting



1. Click "⚙️" to enter the setting page;
2. Adjust the setting , according to what you need

1. Press and hold the device icon.
2. On the displayed menu, you can view the device move it, share it,remove it.

### FCC Statement:

This device complies with part 15 of the FCC Rules. Operation is subject to the following two conditions:

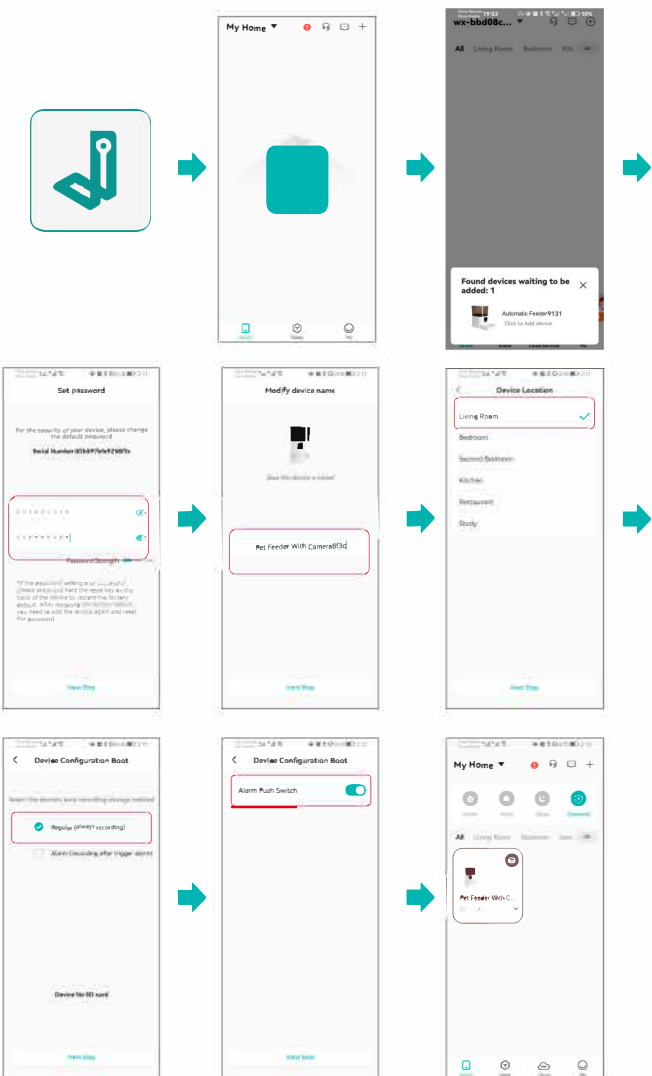
- (1) This device may not cause harmful interference, and
  - (2) this device must accept any interference received, including interference that may cause undesired operation.
- This equipment has been tested and found to comply with the limits for a Class B digital device, pursuant to part 15 of the FCC Rules. These limits are designed to provide reasonable protection against harmful interference in a residential installation. This equipment generates, uses and can radiate radio frequency energy and, if not installed and used in accordance with the instructions, may cause harmful interference to radio communications. However, there is no guarantee that interference will not occur in a particular installation. If this equipment does cause harmful interference to radio or television reception, which can be determined by turning the equipment off and on, the user is encouraged to try to correct the interference by one or more of the following measures:

- Reorient or relocate the receiving antenna.
  - Increase the separation between the equipment and receiver.
  - Connect the equipment into an outlet on a circuit different from that to which the receiver is connected.
  - Consult the dealer or an experienced radio/TV technician for help.
- Caution: Any changes or modifications not expressly approved by the party responsible for compliance could void the user's authority to operate the equipment. This equipment complies with FCC radiation exposure limits set forth for an uncontrolled environment. This transmitter must not be co-located or operating in conjunction with any other antenna or transmitter.

### IC Statement:

This device complies with Industry Canada's licence exempt RSSs. Operation is subject to the following two conditions:

- (1) This device may not cause interference; and
  - (2) This device must accept any interference, including interference that may cause undesired operation of the device.
- Le présent appareil est conforme aux CNR d'Industrie Canada applicables aux appareils radio exempts de licence. L'exploitation est autorisée aux deux conditions suivantes : (1) l'appareil ne doit pas produire de brouillage, et (2) l'utilisateur de l'appareil doit accepter tout brouillage radioélectrique subi, même si le brouillage est susceptible d'en compromettre le fonctionnement.



1. Press and hold "SET" on the control panel to reset the equipment and wait for the green indicator light to flash.
2. Open the app, click "+" and select "Pet Feeder" to add.
3. Bluetooth will automatically discover the device, click "Confirm".
4. Choose 2.4G WIFI ,enter account and password.
5. Set the device name and location.
6. Choose how to be stored, whether or not to turn on the alarm push.
7. Click on the device icon, enters the video and feeding interface.

This device complies with part 15 of the FCC Rules. Operation is subject to the following two conditions: (1) This device may not cause harmful interference, and (2) this device must accept any interference received, including interference that may cause undesired operation.

This equipment has been tested and found to comply with the limits for a Class B digital device,

Pursuant to part 15 of the FCC Rules. These limits are designed to provide reasonable protection against harmful interference in a residential installation. This equipment generates, uses and can radiate radio frequency energy and, if not installed and used in accordance with the instructions, may cause harmful interference to radio communications. However, there is no guarantee that interference will not occur in a particular installation. If this equipment does cause harmful interference to radio or television reception, which can be determined by turning the equipment off and on, the user is encouraged to try to correct the interference by one or more of the following measures:

- Reorient or relocate the receiving antenna.
- Increase the separation between the equipment and receiver.
- Connect the equipment into an outlet on a circuit different from that to which the receiver is connected.
- Consult the dealer or an experienced radio/TV technician for help.

Caution: Any changes or modifications to this device not explicitly approved by manufacturer could void your authority to operate this equipment.

This equipment complies with FCC radiation exposure limits set forth for an uncontrolled environment. This equipment should be installed and operated with minimum distance 20cm between the radiator and your body.

ISED Statement :

-English: This device complies with Industry Canada license - exempt RSS standard(s).

Operation is subject to the following two conditions: (1) This device may not cause interference, and (2) This device must accept any interference, including interference that may cause undesired operation of the device.

The digital apparatus complies with Canadian CAN ICES - 3 (B)/NMB - 3(B).

- French: Le présent appareil est conforme aux CNR d'Industrie Canada applicables aux appareils

radio exempts de licence. L'exploitation est autorisée aux deux conditions suivantes: (1) l'appareil ne doit pas produire de brouillage, et (2) l'utilisateur de l'appareil doit accepter tout brouillage radioélectrique subi, même si le brouillage est susceptible d'en compromettre le fonctionnement.

L'appareil numérique du CIEM conforme canadien peut - 3 (b) / nmb - 3 (b).

This device meets the exemption from the routine evaluation limits in section 2.5 of RSS 102 and compliance with RSS 102 RF exposure, users can obtain Canadian information on RF exposure and compliance.

cet appareil est conforme à l'exemption des limites d'évaluation courante dans la section 2.5 du cnr - 102 et conforme avec RSS 102 de l'exposition aux RF, les utilisateurs peuvent obtenir des données canadiennes sur l'exposition aux champs RF et la conformité.

This equipment complies with Canada radiation exposure limits set forth for an uncontrolled environment.

Cet équipement est conforme aux limites d'exposition au rayonnement établies par le Canada pour un environnement non contrôlé.

This equipment should be installed and operated with minimum distance 20cm between the radiator & your body.

Cet équipement est conforme Canada limites d'exposition aux radiations dans un environnement non contrôlé.

Cet équipement doit être installé et utilisé avec une distance minimale de 20 cm entre le radiateur et votre corps.