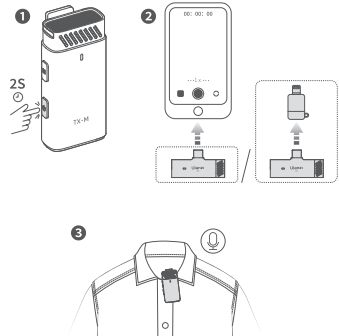


Safety Tips

Do not replace the battery to avoid the risk of explosion.  
Do not expose the product to heat such as fire or high temperatures.  
Do not use the product during a thunderstorms, otherwise it may cause abnormality and increase the risk of electric shocks.  
Do not dismantle or modify any part of the product by yourself to avoid malfunction or burnout.

Instructions

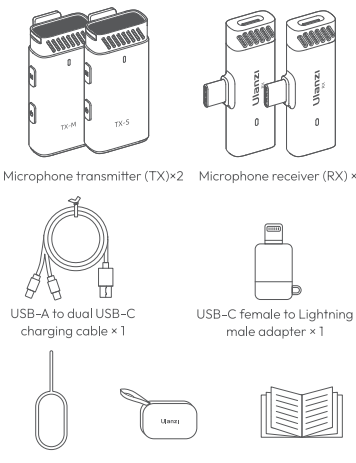


EN

Product Brief

This wireless lavalier mic with dual transmitters supports multi-channel lossless sound pickup for simultaneous recording of sound sources, featuring mute, noise reduction, and reverb.

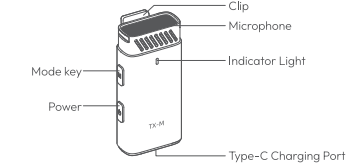
Packing List



EN

Functions

\*The microphone transmitter (TX) is divided into a main unit and a secondary unit. The main unit is labeled "TX-S". The one not labeled "TX-S" is the secondary unit. The main unit must be turned on to use the secondary unit, and to connect to the receiver RX.



Function Keys (Transmitter)

	Short press: volume increase by 1 step, maximum 4 steps; Long press: turn on/off mute mode; Double-click: turn on/off reverb;
	Short press: turn on/off noise reduction; Long press: long press 2s to turn on/off; Triple tap: enter pairing mode.

Light Effects of Main Unit

Mute	Sky-blue light flashes slowly
Power On	Blue light always on
Noise Reduction Mode	Sky-blue light always on

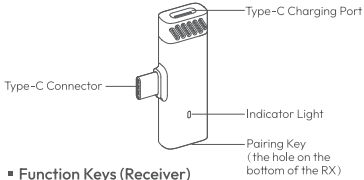
EN

Reverb Mode	Green light flashes twice
Adjust Volume	Green light flashes once
Low Battery Status	Red light flashes fast
Charging	Red light always on

Indicator Lights of Transmitter

Mute	Sky-blue light flashes slowly
Disconnected	Blue light flashes slowly
Pairing	Blue light flashes fast
Connected	Blue light always on
Noise Reduction Mode	Sky-blue light always on
Reverb Mode	Green light flashes twice
Adjust Volume	Green light flashes once
Low Battery Status	Red light flashes fast
Charging	Red light always on

EN



Function Keys (Receiver)

	Insert the tray ejector into the hole on the bottom of the receiver to enter the pairing mode;
--	--

Indicator Lights of Receiver

Disconnecte	Blue light flashes slowly
Pairing	Blue light flashes fast
Connected	Blue light always on

Specifications

Audio Parameters

Sampling Rate	48kHz 16bit
Frequency Response	20Hz~20kHz
Signal-to-Noise Ratio	≥80dB
Maximum Sound Pressure Level	105dBSPL
Transmission Distance	≥30 meters
Polar Pattern	Omni-directional
Latency	Noise Reduction On: main mic 25ms; sub mic 58ms Noise Reduction Off: main mic 33ms; sub mic 92ms

EN

Electrical Performance Parameters (Transmitter)

Battery	3.7V 130mAh 0.481Wh	Charging Time	2.5h
Input	5V~0.1A	Battery Life	5h

General Parameters

Dimensions	TX: 47×10.8×15.8 mm RX: 47×24.7×8.2 mm
Weight	TX: 12g RX: 6g
Charging Temperature	0°C~45°C
Working Temperature	-10°C~50°C

Maintenance

- Please try to keep transmitter and receiver operated close to avoid signal problems.
- Please avoid water ingress or heavy drop; if water is accidentally spilled, please turn off the device and dry it out, and contact a qualified service technician in time.
- Please use the cable provided with this product.
- To ensure product safety, the proper working temperature range is -10°C~50°C; if the temperature is too high, the system will automatically shutdown or can not be turned on.
- If the product is not used for a long time, please recharge it every two months.
- To ensure the safety of the battery, please charge the product in the temperature range of 0°C~45°C; if the temperature is too high, the system will automatically shutdown or can not be turned on.

EN

FCC Statement

This device complies with part 15 of the FCC Rules. Operation is subject to the following two conditions: (1) this device may not cause harmful interference, and (2) this device must accept any interference received, including interference that may cause undesired operation.

Any changes or modifications not expressly approved by the party responsible for compliance could void the user's authority to operate the equipment.

NOTE: This equipment has been tested and found to comply with the limits for a Class B digital device, pursuant to Part 15 of the FCC Rules. These limits are designed to provide reasonable protection against harmful interference in a residential installation. This equipment generates, uses and can radiate radio frequency energy and, if not installed and used in accordance with the instructions, may cause harmful interference to radio communications. However, there is no guarantee that interference will not occur in a particular installation.

If this equipment does cause harmful interference to radio or television reception,

which can be determined by turning the equipment off and on, the user is encouraged to try to correct the interference by one or more of the following measures:

- Reorient or relocate the receiving antenna.
- Increase the separation between the equipment and receiver.
- Connect the equipment into an outlet on a circuit different from that to which the receiver is connected.
- Consult the dealer or an experienced radio/TV technician for help.

The device has been evaluated to meet general RF exposure requirement. The device can be used in portable exposure condition without restriction

EN