

2.4G Wireless Backlight
Keyboard Mouse Combo

User Manual

FCC Warning

This device complies with Part 15 of the FCC Rules. Operation is subject to the following two conditions:
(1) This device may not cause harmful interference, and (2) this device must accept any interference received, including interference that may cause undesired operation.

NOTE 1: This equipment has been tested and found to comply with the limits for a Class B digital device, pursuant to part 15 of the FCC Rules. These limits are designed to provide reasonable protection against harmful interference in a residential installation. This equipment generates, uses and can radiate radio frequency energy and, if not installed and used in accordance with the instructions, may cause harmful interference to radio communications. However, there is no guarantee that interference will not occur in a particular installation. If this equipment does cause harmful interference to radio or television reception, which can be determined by turning the equipment off and on, the user is encouraged to try to correct the interference by one or more of the following measures:
- Reorient or relocate the receiving antenna.
- Increase the separation between the equipment and receiver.
- Connect the equipment into an outlet on a circuit different from that to which the receiver is connected.
- Consult the dealer or an experienced radio/TV technician for help.

NOTE 2: Any changes or modifications to this unit not expressly approved by the party responsible for compliance could void the user's authority to operate the equipment.

The device has been evaluated to meet general RF exposure requirement. The device can be used in portable exposure condition without restriction.

All Acebaff products come with a 12-months warranty policy, please do not hesitate to contact us if you have any questions. Our support team will try our best to provide you with a pleasant shopping experience.
Our email: abscsm001@126.com

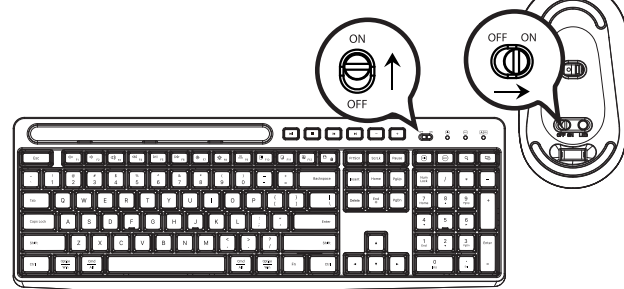
Packing List



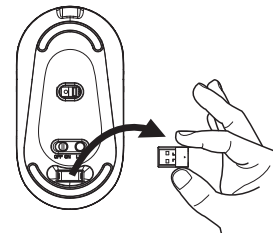
- 1.Keyboard x1
- 2.Mouse x1
- 3.USB Receiver x1(in the mouse battery compartment)
- 4.USB C Charging Cable X1
- 5.User Manual x1
- 6.FAQ Card x1

2.4G Wireless Connection

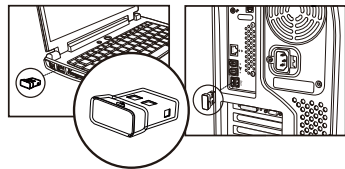
- 1 Turn on the power switch.



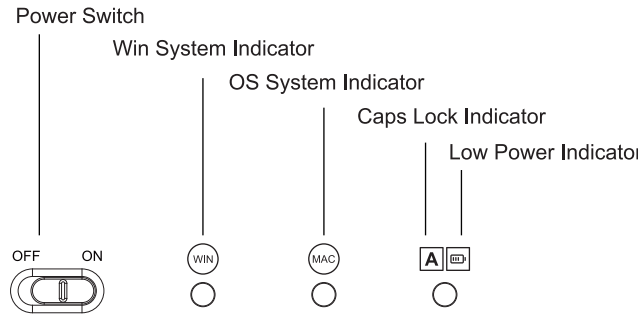
- 2 Take out the USB receiver.



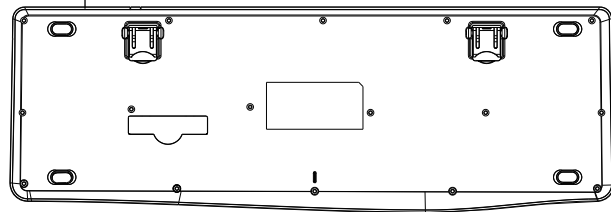
- 3 Insert the receiver into computer USB Port.



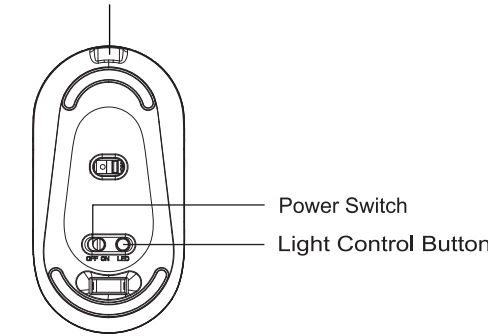
Overview



Type C Charging Port



Type C Charging Port



BackLight Functions

Keyboard Backlight

- 1: The keyboard has 4 kinds of lighting effects:
Backlit off < Low(30% brightness)>Mid(60% brightness)<High (100% brightness)
- 2: Press FN+END keys to adjust the keyboard backlight effects.



Mouse Backlight

- 1: The mouse has 22 kinds of RGB lighting effects.
- 2: The backlight control button is at the bottom of the mouse:
 - 1)Short press the light button at the bottom to switch light effects circularly.
 - 2)Press and hold the light button for 3 seconds to turn off/on the light.

Keys and Function

Key	Windows	Mac OS
⏏	Mute	Mute
⏮	Volume -	Volume -
⏭	Volume +	Volume +
⏮	Previous	Previous
⏭	Play/Pause	Play/Pause
⏮	Next track	Next track
☀	Brightness down	Brightness down
☀	Brightness up	Brightness up
📱	Switch App	Switch App
📱	Select All	Select All
📄	Copy	Copy
📄	Paste	Paste
📄	Save	Save
Fn + 🔒	F1-F12 Lock/Unlock	Not for Mac os
⌘	One Click, Switch to Win System	One Click, Switch to Win System
⌘	One Click, Switch to OS System	One Click, Switch to OS System
🔍	Search	Search
🔒	Lock Screen	Lock Screen

Keys and Function

- 1.Press key to use the keyboard on Windows PC

The F1-F12 Lock/Unlock function is only for Windows:

- 1)When the F1-F12 is Locked:
You could use the Multi-Media functions directly. (Defaulted)
- 2)When the F1-F12 is Unlocked:
You could use Multi-media Functions by Fn +F1-F12 .

Lock/Unlock the F1-F12 Functions by : +

- 2.Press key to use the keyboard on MAC OS devices.

You could use the Multi-Media Functions directly for Mac OS.

You could use F1-F12 Functions by Fn +F1-F12 .

(Note: The F1-F12 Lock/Unlock function is not for Mac OS)

CORRECT DISPOSAL OF THIS PRODUCT

(Waste Electrical& Electronic Equipment)
This Marking shown on the product or its literature, indicate that it should not be disposed with other household wastes at the end of its working life.

To prevent possible harm to the environment or human health from uncontrolled waste disposal, please separate this from other types of wastes and recycle it responsibly to promote the sustainable reuse of material resources.

Household user should contact either the retailer where they purchased this product, or their local government office, for details of where and how they can take this item for environmentally safe recycling.

Business users should contact their supplier and check the terms and conditions of the purchase contract. This product should not be mixed with other commercial wastes for disposal.