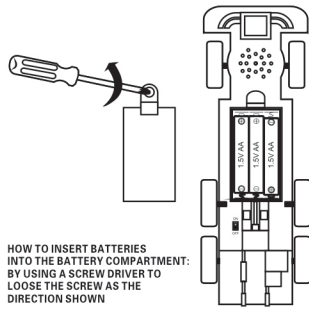
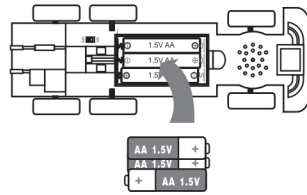


CAR CHASSIS

1. Turn the screw on counterclockwise to open the battery cover

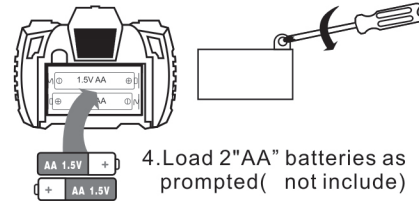


2. Load 3 "AA" batteries as prompted(not include)

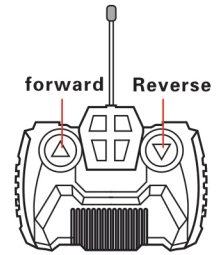


REMOTE CONTROL

3. Turn the screw on counterclockwise to open the battery cover

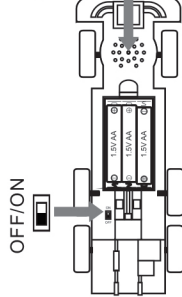


4. Load 2 "AA" batteries as prompted(not include)



FUNCTION DISPLAY

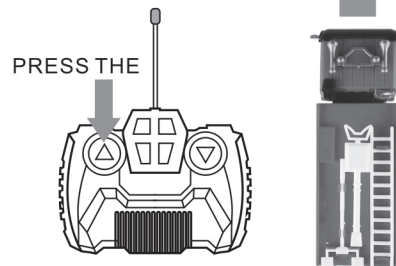
LOUDSPEAKER HOLE



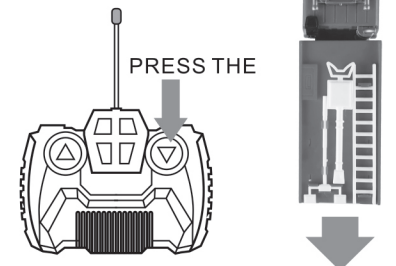
5. Turn on the switch and immediately make a sound, The window glass will give out beautiful 3D lighting

MANIPULATION OF THE INSTRUCTIONS

6. Press the forward button and the vehicle moves forward



7. Press the back button to drive backwards



CAUTION

BATTERY WARNING AND LABELING

Use alkaline batteries recommended
Do not use rechargeable batteries
Non-rechargeable batteries are not to be recharged
Do not mix old or new batteries
Do not mix alkaline, standard (carbon-zinc), or rechargeable (nickel-cadmium) batteries
Only batteries of the same or equivalent type as recommended are to be used
Batteries are to be inserted with the correct polarity
Exhausted batteries are to be removed from the toy
The supply terminals are not to be short-circuited
Please keep this information for future reference
Remove batteries from the product before extended storage
Please take note that the product may vary from the picture and the illustration of the package

BATTERY INSTRUCTIONS:

only adults should replace batteries
locate the switch on the bottom of toys and make sure it is off
remove all used batteries from inside the compartment
dispose of used batteries properly
not the polarity (+/-) of the new battery and place properly inside the compartment

FCC ID: 2AMQQ86-85336898

This device complies with Part 15 of the FCC Rules. Operation is subject to the following two conditions: (1) this device may not cause harmful interference, and (2) this device must accept any interference received, including interference that may cause undesired operation. This equipment has been tested and found to comply with the limits for a Class B digital device, pursuant to Part 15 of the FCC Rules. These limits are designed to provide reasonable protection against harmful interference in a residential installation. This equipment generates, uses and can radiate radio frequency energy and, if not installed and used in accordance with the instructions, may cause harmful interference to radio communications. However, there is no guarantee that interference will not occur in a particular installation.

If this equipment does cause harmful interference to radio or television reception, which can be determined by turning the equipment off and on, the user is encouraged to try to correct the interference by one or more of the following measures:

- Reorient or relocate the receiving antenna.
- Increase the separation between the equipment and receiver.
- Connect the equipment into an outlet on a circuit different from that to which the receiver is connected.
- Consult the dealer or an experienced radio/TV technician for help.

changes or modifications not expressly approved by the party responsible for compliance could void the user's authority to operate the equipment.