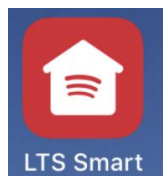


NINGBO LITESUN ELECTRONICS CO., LTD

Model: LA-WF2

Quick Start for LTS Smart Wi-Fi Plug Setup:

1. Download LTS Smart app from the App Store or Google Play or scan QR code.

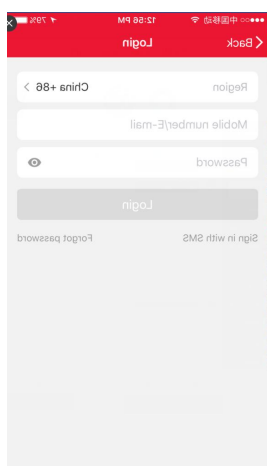


2. Connect mobile device to your 2.4GHz Wi-Fi network. Please note this Smart Plug can only be connected via a 2.4GHz network.

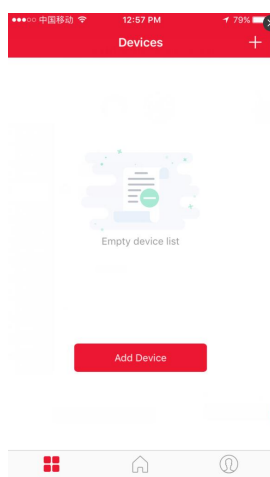


3. Launch LTS Smart and follow the in-app instructions to connect the Smart Plug to your network.

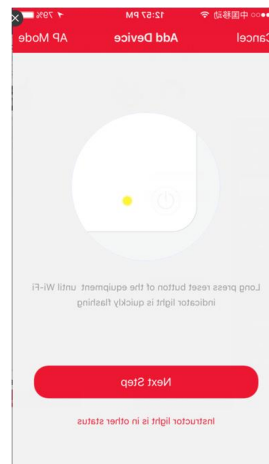
a. Login to LTS Smart



b. Click Add Device



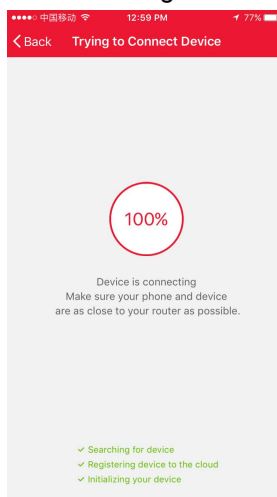
c. Set rapid blink, click Confirm



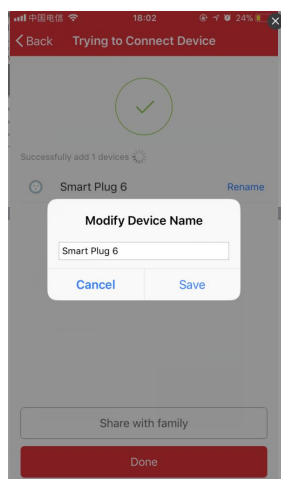
d. Enter Wi-Fi password



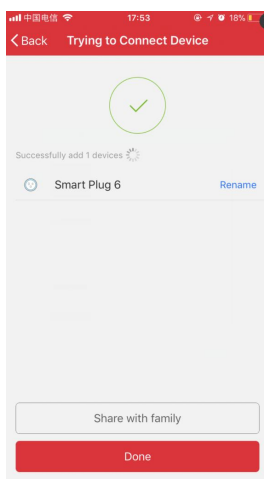
e. Connecting device



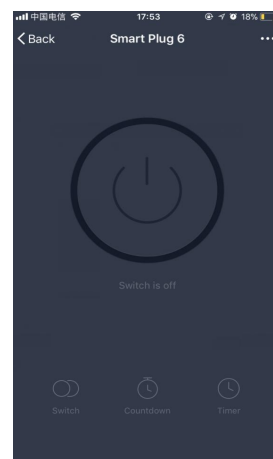
f. Edit Name, Share or Done



g. Device Home Screen

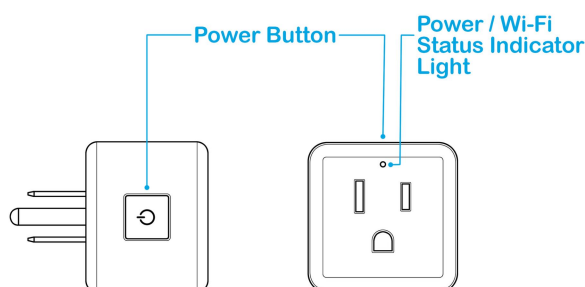


h. ON/OFF Control



After you have successfully set up the LTS Smart app and your device(s) you may control them remotely from your mobile device using a Wi-Fi or Cellular connection. Compatible with Alexa Echo and Google Home.

Wi-Fi Smart Plug:



LTS Smart App Reference Guide:

Register / Create an Account

Tap "Register" to create an account using your email address or mobile phone number. Optionally you may tap Sign in with SMS to create a temporary account using your mobile phone number.

- Tap Register to enter registration page.
- The system automatically recognizes your Region (country/code). You may also follow the instructions to manually select your country code. Enter your email address or mobile number (do not include dashes or spaces) and tap Login.
- If you enter your mobile number, you will get a verification code via text message. Enter the verification code, create a password, and tap "Confirm" to finish your registration.
- If you enter your email, create a password and tap "Confirm" to finish your registration.

Login / Registered Account

- Tap "Login" to sign in to your account.
- Enter your previously registered email address or mobile number and password, and then tap "Login".

Login / Temporary Account / Sign in with SMS

- Tap “Sign in with SMS” if you want to create a temporarily login. Note: there is no password and your login account will not be saved.
- Enter your mobile number (no dashes or spaces) and tap “Get”. You will receive a verification code via text message.
- Enter the verification code and tap “Login”.

Forgot Password

- To reset Password, Tap “Forgot password”.
- Enter you email address or mobile number and tap “Next”.
- Enter the verification code received via text or email, then enter a new password, tap “Confirm” to finish.

Add Device +

Normal Mode

- Enter the App, tap “+” Add Device in the center bottom of the page to enter device connection page.
- There are two Wi-Fi network connection methods (Normal Mode and AP Mode.) Normal Mode is the default and connects via your 2.4GHz Wi-Fi channel only. (Does not work with 5GHz channel.) Normal mode allows you to connect several LTS Smart devices at the same time.
- For Normal Mode, please make sure the indicator light on the plug is set to flashing rapidly (2 times per second).
- Press the Wi-Fi power button and hold for 5 seconds until blue indicator light starts rapid flashing.
- Tap “Confirm indicator rapidly blink”.
- Enter your 2.4GHz Wi-Fi password and tap “Confirm” to enter the device connection process.
- Device Connection Process will begin and connect device.
- Tap Done.

AP Mode (Access Point)

- Tap “AP Mode” in upper right screen.
- Connect your phone to 2.4GHz Wi-Fi.
- In AP Mode your device broadcasts a device name in your phone’s Wi-Fi Settings that allows the Wi-Fi device to connect to your network. AP mode allows you to connect devices one by one.
- Make sure the device’s indicator light is slowly flashing (1 time every 3 seconds). Press and hold Wi-Fi power button for 8-10 seconds to set blue indicator light to fast flashing. Press and hold again until blue indicator light slowly flashes.
- Tap “Confirm indicator slowly blink”.
- Enter your 2.4GHz Wi-Fi password and tap “Confirm”.
- Open Wi-Fi Settings to connect to Device’s Access Point Wi-Fi name.
- Locate then Tap the Wi-Fi device name, i.e. SmartLife_XXXX.
- Tap Connect.
- Go back to LTS Smart app.
- Device Connection Process will begin and connect device.
- Tap Done.

Network Connection Process

The App goes through the process of trying to Connect Device, and displays a percentage on the Connecting Now screen while connecting. When the percentage reaches 100% the device should be successfully connected and registered to the cloud. The device default name will appear on the screen. You may rename the device by tapping the pencil icon to edit. This allows you to change to a better description of what the plug is controlling, for example, "Living Room Lamp". Tap "Done" or "Share with Family" to finish setup.

Troubleshooting Adding Device Failed

If your App interface failed to connect your plug to your mobile device, it means that the network connection failed. Make sure you are connected to a 2.4GHz Wi-Fi channel. Try connecting again or view help in the app.

Controlling Devices

After successfully configuration, the connected devices will be displayed on the home screen. Tap the device name to enter its control page. Access to the control buttons is located in the upper right corner of the screen "..." in addition to Switch, Countdown and Timer on main screen.

Note: When device is offline or no longer connected, "Offline" will appear under the device name. Tap "+ Add Device" and follow the on-screen instructions to re-connect the device.

Device Control Center Features

- **Switch:** Switch the outlet on and off remotely using Wi-Fi or Cellular connection.
- **Countdown:** Set a countdown timer to set your device to either turn on or turn off once.
- **Timer:** Set on and off schedules for each device. On and off schedules must be set up individually. Make sure to set an off schedule for every on schedule.

Device Settings / ...

To control your devices Tap "..." in upper right corner of device control screen.

- **Modify Device Name>** Set a custom name for your device.
- **Device Sharing>** Tap "Add" to share the device with family members; they must have registered LTS Smart app login name.
- **Device Info>** Displays your Device ID, IP address and Mac Address.
- **Create Group>** Create a group to control multiple devices simultaneously. A list of available devices to group will be displayed. Only identical devices with same model number may be grouped.
- **Use Echo>** Follow the on-screen instructions for how to set up voice control of your device with the Alexa app using Amazon Echo to control a device.
- **Send Feedback>** Send feedback to the manufacturer.
- **Check for Firmware Update>** Display the latest version.
- **Remove Device>** Remove the device from the app. Note: this won't delete the customized device information; previously connected device information is stored.
- **Restore Manufacturer Defaults>** Delete the stored device information completely.

Profile

Tap "Profile" located at bottom of home screen.

Tap to set your name> Below are options available for set up:

Add Profile Picture, Nickname, Phone Number, Account location, Change Login Password, Pattern Unlock, Logout

Device Sharing> Users sharing your device.

Message Center> Messages related to the app.

Use Echo> Display list of supported devices and set up instructions for Amazon Echo.

FAQ> Tap to view list of frequently asked questions

Feedback> Display feedback messages sent or send new feedback message.

About> Current app version. Rate Us: submit rating and/or review.

Settings> Turn on/off Sound, Vibrate, and Push Notifications, Clear Cache.

Warnings

Plug directly into a standard grounding 15A wall receptacle (not into an extension cord or wall tap.) Unit is not intended for use with 20A or GFCI wall receptacles.

Risk of Electric Shock

DO NOT use in wet or damp locations.

Keep children away from Wi-Fi plug, outlets and cords

For Indoor use only

Fully Insert Plug

Risk of Fire

DO NOT exceed recommended electrical ratings

DO NOT use with extension cords

DO NOT remove ground pin (middle pin)

DO NOT use with precision timing devices where inaccurate timing could be dangerous

DO NOT use with devices that should not be operated unattended (heaters, burners, etc.)

ALL CHARGING ESSENTIALS PRODUCTS MUST BE INSTALLED AND USED IN ACCORDANCE WITH THEIR INSTRUCTIONS, INCLUDING INSTRUCTIONS PROVIDED WITH THE CHARGING ESSENTIALS PRODUCT PACKAGING OR PROVIDED ON THE PRODUCT ITSELF. AT THE DISCRETION OF CHARGING ESSENTIALS ANY DEFECTIVE PRODUCT WILL BE REPLACED OR THE PURCHASE PRICE REFUNDED. THIS WARRANTY SHALL IN NO EVENT EXCEED AMOUNTS PAID BY CUSTOMER TO CHARGING ESSENTIALS OR ITS AFFILIATES FOR THE CHARGING ESSENTIAL PRODUCTS INVOLVED, AND EXPRESSLY EXCLUDES COVERAGE OF ANY DAMAGE TO THIRD PARTY PRODUCTS OR ELECTRONICS.

Specifications

Maximum Input Voltage (VAC)	125 VAC
Nominal Input Frequency (Hz)	60Hz
Maximum Output Power (Watts)	1250W
Maximum Line Current (Amps)	10A
Indoor	Indoor Only
Network Requirements	Wireless router supporting 2.4 GHz wireless band Remote Control Devices through 3G, 4G or Wi-Fi
Smart Device Compatibility	Android smart mobile device running Android 4.1 or above iPhone/iPad running iOS 8 or above LTS Smart App 1.0.1 or higher

Certifications	ETL & CETL Listed, FCC
Standards	<p>Conforms to UL STD.498A and UL60730-1 Certified to CSA STD C22.2 NO 42 AND E60730-1</p> <p>CONFORMS TO UL STD 60730-1 AND 498A CERTIFIED TO CSA STD E60730-1 AND C22.2#42</p>

ISED Statement

English: This device contains licence-exempt transmitter(s)/receiver(s) that comply with Innovation, Science and Economic Development Canada's licence-exempt RSS(s). Operation is subject to the following two conditions:

- (1) This device may not cause interference.
- (2) This device must accept any interference, including interference that may cause undesired operation of the device.

The digital apparatus complies with Canadian CAN ICES-3 (B)/NMB-3(B).

French: Cet appareil contient des émetteurs/récepteurs exempts de licence qui sont conformes aux RSS exemptés de licence d'Innovation, Sciences et Développement économique Canada.

L'exploitation est soumise aux deux conditions suivantes :

- (1) Cet appareil ne doit pas provoquer d'interférences.
- (2) Cet appareil doit accepter toute interférence, y compris les interférences susceptibles de provoquer un fonctionnement indésirable de l'appareil.

l'appareil numérique du ciem conforme canadien peut - 3 (b) / nmb - 3 (b).

This device meets the exemption from the routine evaluation limits in section 6.3 of RSS 102 and compliance with RSS 102 RF exposure, users can obtain Canadian information on RF exposure and compliance.

cet appareil est conforme à l'exemption des limites d'évaluation courante dans la section 2.5 du cnr - 102 et conformité avec rss 102 de l'exposition aux rf, les utilisateurs peuvent obtenir des données canadiennes sur l'exposition aux champs rf et la conformité.

This equipment complies with Canada radiation exposure limits set forth for an uncontrolled environment.

Cet équipement est conforme aux limites d'exposition aux rayonnements du Canada établies pour un environnement non contrôlé.

This equipment should be installed and operated with minimum distance 20cm between the radiator & your body.

Cet équipement doit être installé et utilisé à une distance minimale de 20 cm entre le radiateur et votre corps.

This radio transmitter has been approved by Industry Canada to operate with the antenna types listed with the maximum permissible gain indicated. Antenna types not included in this list, having again greater than the maximum gain indicated for that type, are strictly prohibited for use with this device.

Le présent émetteur radio a été approuvé par Industrie Canada pour fonctionner avec les types d'antenne énumérés ci-dessous et ayant un gain admissible maximal. Les types d'antenne non inclus dans cette liste, et dont le gain est supérieur au gain maximal indiqué, sont strictement interdits pour l'exploitation de l'émetteur.

FCC Statement

This equipment has been tested and found to comply with the limits for a Class B digital device, pursuant to part 15 of the FCC Rules. These limits are designed to provide reasonable protection against harmful interference in a residential installation. This equipment generates, uses and can radiate radio frequency energy and, if not installed and used in accordance with the instructions, may cause harmful interference to radio communications. However, there is no guarantee that interference will not occur in a particular installation. If this equipment does cause harmful interference to radio or television reception, which can be determined by turning the equipment off and on, the user is encouraged to try to correct the interference by one or more of the following measures:

Reorient or relocate the receiving antenna.

Increase the separation between the equipment and receiver.

Connect the equipment into an outlet on a circuit different from that to which the receiver is connected.

Consult the dealer or an experienced radio/TV technician for help.

Caution: Any changes or modifications to this device not explicitly approved by manufacturer could void your authority to operate this equipment.

This device complies with part 15 of the FCC Rules. Operation is subject to the following two conditions: (1) This device may not cause harmful interference, and (2) this device must accept any interference received, including interference that may cause undesired operation.

RF Exposure Information

This equipment complies with FCC radiation exposure limits set forth for an uncontrolled environment. This equipment should be installed and operated with minimum distance 20cm between the radiator and your body.

Made in China