

# User Manual

Product Name: CLEANTYPE® WAVECLASSIC

Model: KSI-B10020, KSI-B10010

Brand: GETT®

Manufacture: GETT Assembly (Asia) Co., Ltd.

## Table of content

1. What's in the box ?	P.1
2. Keyboard quick reference	P.2
3. USB mode for Win / IOS / Andriod	P.4
4. Install & handling for this keyboard on window PC	P.5
5. Install & handling for this keyboard on IOS / Android	P.7
6. General Specification	P.9
7. Cleaning instruction	P.10
8. Precautions in handling and Use	P.11
9. In case of defective batteries	P.12

## 1. What's in the box ?



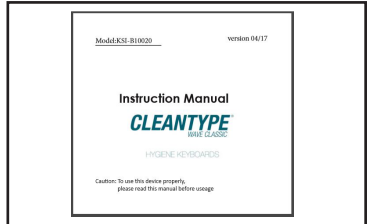
i) Bare keyboard



iii) USB cable

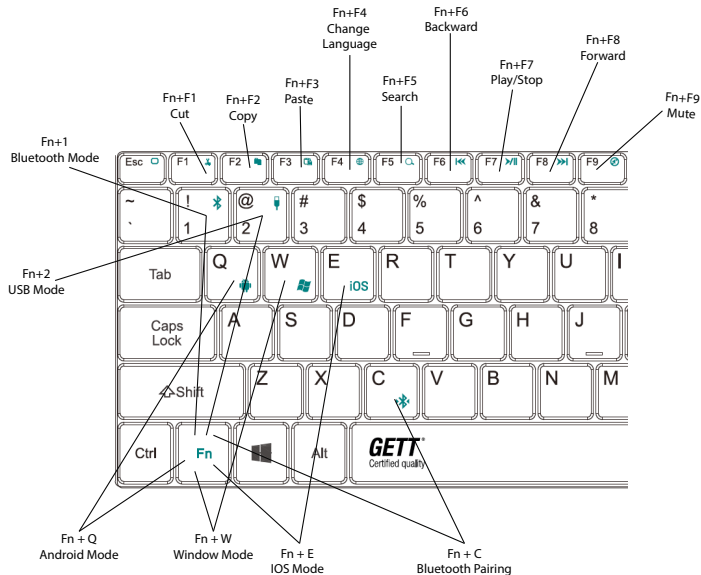


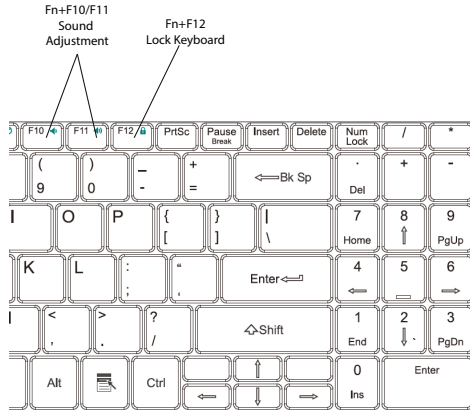
ii) Protective cover



iv) User manual

## 2. Keyboard quick reference





For Technical support please contact us,  
E-mail : [cs@gett-asia.com](mailto:cs@gett-asia.com)

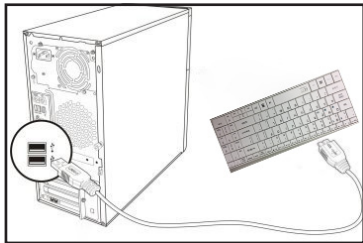
### 3. USB mode for Win / IOS/ Android



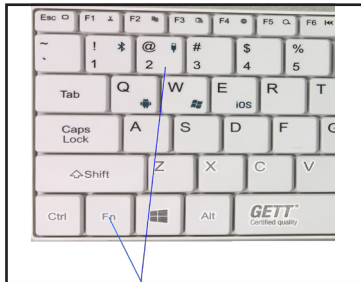
Step 1 : USB-mode is default in “switch off” position



Step 2.5) “Red” LED light flash on



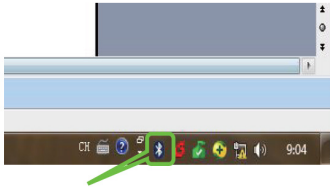
Step 2 : under “switch off” position, connect keyboard to a PC, you will see “red” LED light flash on



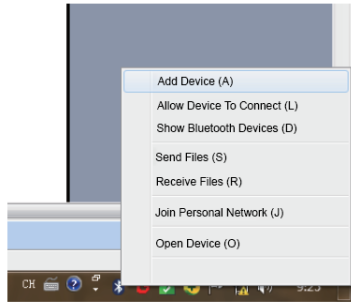
Step 3. Press **Fn + 2** together

## 4. Install & handling for this Keyboard on Windows PC

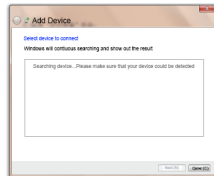
Step 1. Before start, you have to check if your computer installed a bluetooth receiver. if not, you need to buy one and install it on your computer. when your computer connects the bluetooth successfully, a bluetooth icon would be shown on the task bar (as shown)



Step 2. Right-click the Blue tooth icon, then select “Add Device”



Step 3. After select “Add Device”, the computer will start to search this keyboard



Step 4. Turn on the Keyboard and hold **FN+1 key for 5 seconds** to switch on the bluebtooth keyboard mode. Hold **FN+C for another 5 seconds** to activate the Bluetooth pairing. when the computer search the Bluetooth keyboard successfully, Click"next" then.



Step 5. As shown below, a set of numbers would appear on the screen, please enter those numbers and press "ENTER" when finish. Then , click "Next"

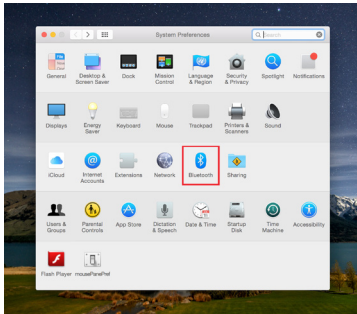


Step 6. You could type with the bluetooth keyboard after successful connection.



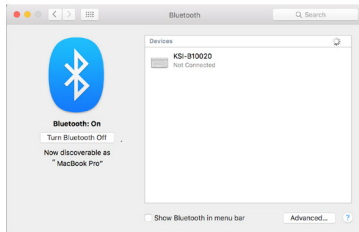
## 5. Install & handling for this Keyboard on IOS and Android

**For IOS** Step 1. Turn on your IOS system , and go to -> System preferences -> Bluetooth.

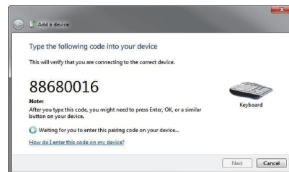


Step 2. Turn on the Keyboard and hold **FN+1 key for 5 seconds** to switch on the blueooth keyboard mode. Hold **FN+C for another 5 seconds** to activate the Bluetooth pairing. Hold **FN+E for 5 seconds**to switch IOS mode

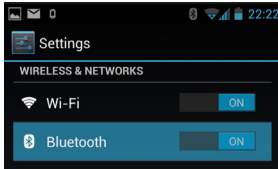
Step 3. Turn on blueooth function  
Computer will search and show  
“KSI-B10020” keyboard.  
Double click that to connect



Step 4. As shown below, a set of numbers would appear on the screen, please enter those numbers and press “ENTER” when finish. Then , click “Next”. It will create successful connection.



**For Android** Step 1. Turn on your Android system , and go to  
-> Settings -> Bluetooth  
Turn on the bluetooth function.

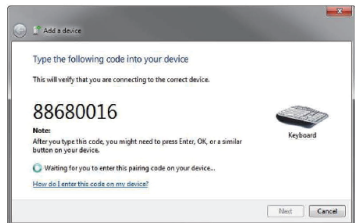


Step 2. Turn on the Keyboard and hold **FN+1 key for 5 seconds** to switch on the bluetooth keyboard mode. Hold **FN+C for another 5 seconds** to activate the Bluetooth pairing. Hold **FN+Q for 5 seconds** to switch Android mode

Step 3. After turn on bluebooth function, it will search and show “KSI-B10020” keyboard.  
Double click that to connect



Step 4. As shown below, a set of numbers would appear on the screen, please enter those numbers and press “ENTER” when finish. Then , click “Next”. It will create successful connection.



## 6. General Specification

### **Keyboard dimension:**

345(L) x 115(W) x 25(T) mm

### **Operating voltage + 5 V**

**weight** - approx 350 gram

**Warranty period** - 2 years

**Protective cover** : GAA-XK16701 can buy separately by request. Cover made of **Latex free** silicon material

### **Battery type :**

- built-in single 250mA lithium battery
- charging time: 2.5-3 hours (via USB cable)

### **Switching between USB/Bluetooth mode :**

- when you **“switch on”** the keyboard, the default mode will be in Bluebooth. Press Fn+2 to change to USB-mode. Then press FN+1 to switch back to Bluetooth-mode.
- when you **“switch off”** the Keyboard, the default mode will be in USB-mode.

**\*Specifications will subject to change without notice,  
Please visit [www.gett-asia.com](http://www.gett-asia.com) for product update.**



**NANO SILVER**  
antibacterial  
technology



## 7. Cleaning instruction

- Ensure the port cover is fully enclosed before any cleaning or wet process to prevent malfunctioning.



- Clean the bare keyboard conveniently by dishwashing, wiping, brushing, spraying or dipping it in vinegar-based household cleaner.
- Similar the protective cover can be removed and cleaned by dishwashing, wiping, brushing, spraying or dipping it in vinegar-based household cleaner.
- Use only soft bristle brushes or sponges, exert slight pressure only.
- Either wipe with a damp cloth or allow it to air dry.
- When disinfecting, we recommend that you use an alcohol-based disinfectant according to the manufacturer's specifications.

### **DO NOT USE**

- White spirit: cellulose thinner: methyl-ethyl-ketone
- Organic solvents such as Loesol
- Inorganic solvents such as Thinning agent
- Object to temperature exceed 55 degree or pressure sterilization
- Scrubbing pads
- Steel wool products or aggressive scouring agents to remove the hardened dirt.

**\*\*WARNING: USE OF PRODUCTS CONTAINING PETROLEUM AND COMPONENTS ALIKE IS STRICTLY FORBIDDEN WITH THIS KEYBOARD. SHOULD THERE BE USE OF THESE HAZARDOUS COMPONENTS, THE MANUFACTURERS WARRANTY WILL BE VOID. IF YOU ARE UNCERTAIN ABOUT USING YOUR PREFERRED CLEANING AGENT OR DISINFECTANT, YOU CAN CONTACT US AT [cs@gett-asia.com](mailto:cs@gett-asia.com)\*\***

## 8. Precautions in handling and Use



- Do not dry this keyboard with an appliance or heat source such as a microwave heating , dryers, and radiator.
- Do not dispose of the Keyboard in a fire.
- Avoid leaving keyboard in a car or in other surroundings with high temperature.
- Do not use the keyboard under hot sun.
- Do not use the keyboards in temperature higher than 55 degree.
- Do not disassemble or damage or deform or modify the keyboard.
- Keyboard should not be dropped , thrown , or subjected to other strong impact.
- Prefer to store the keyboard in a dry , cool place.
- Do not use the keyboards with equipment which generates strong eletromagnetic radiation.
- Do not remove the battery off the keyboard
- Only charge the keyboard with included accessory and cables.
- Do not disassemble or damage or deform or modify the battery.
- The positive and negative terminal of batteries should not be short circuited, or solder to other objects. if it is short circuited, stop use it any further.

## 9. In case of defective batteries



- Should fluid leaked from a battery come in contact with skin or clothing, the affected skin should be washed with water immediately.
- Should fluid enter the eyes, damage may result. The eyes should be washed with water immediately with follow up medical attention.
- If batteries leak fluid or give off strange smell, they should immediately be removed from the vicinity of any open flames. Leaking electrolyte may catch fire, causing ignition and rupture.
- Damage keyboard, keyboard with abnormalities (for example generation of heat) or keyboard having been exposed to any situations named above should not be used furthermore, independent from the fact if any defect is to be seen. In such a situation give the keyboard for repairing to the manufacturer.
- If younger children use the keyboard, their guardian should explain the proper handling method and precaution before using.
- Charge the battery in the keyboard only. Do not charge in temperature lower than Zero degree or higher than 45 degree.
- Discharge the battery in keyboard only. DO not discharge in temperature lower than -20 degree or higher than 60 degree.

**FCC Caution.****§ 15.19 Labelling requirements.**

This device complies with part 15 of the FCC Rules. Operation is subject to the following two conditions: (1) This device may not cause harmful interference, and (2) this device must accept any interference received, including interference that may cause undesired operation.

**§ 15.21 Changes or modification warning**

Any Changes or modifications not expressly approved by the party responsible for compliance could void the user's authority to operate the equipment.

**§ 15.105 Information to the user.**

**Note:** This equipment has been tested and found to comply with the limits for a Class B digital device, pursuant to part 15 of the FCC Rules. These limits are designed to provide reasonable protection against harmful interference in a residential installation. This equipment generates uses and can radiate radio frequency energy and, if not installed and used in accordance with the instructions, may cause harmful interference to radio communications. However, there is no guarantee that interference will not occur in a particular installation. If this equipment does cause harmful interference to radio or television reception, which can be determined by turning the equipment off and on, the user is encouraged to try to correct the interference by one or more of the following measures:

- Reorient or relocate the receiving antenna.
- Increase the separation between the equipment and receiver.
- Connect the equipment into an outlet on a circuit different from that to which the receiver is connected.
- Consult the dealer or an experienced radio/TV technician for help.

**\*RF warning:**

The device has been evaluated to meet general RF exposure requirement. The device can be used in portable exposure condition without restriction.