

Please read the following instructions and warnings carefully. Keep the User's Guide for future reference. For adult use only.

WARNING:
Adult assembly required. Keep small parts away from children when assembling.



WILLCARE DIGITAL AUDIO BABY MONITOR USER'S MANUAL

DBM-8P
DBM-8B

WARNING:
STRANGULATION HAZARD - Children have STRANGLED in cords. Keep this cord out of reach of children (more than 3 feet (0.9 m) away from the crib). Never use extension cords with AC adapters. Only use the AC adapters provided.

WILLCARE

SPECIAL FEATURES

Two-way Communication: Calm your baby with the sound of your voice or use this as a convenient way to remind each other of something that is needed from the nursery. By speaking into the parent unit, your voice is projected through the baby unit so you can give comfort and reassurance, or gentle reminders, from another room.

Nightlight: Create an ambient glow for baby's room with the nightlight on the baby unit. The nightlight provides a convenient way for parents to sneak a peek at the baby in a dark room, and the remote control from the parent unit makes it easy to turn it on or off for baby's sleeping comfort.

Sensitive Microphone: The high sensitivity microphone allows parents to hear low-level sounds coming from the baby's room, as well as the louder sounds and crying, giving them the confidence that they would be able to hear their babies. The microphone focuses on baby's sounds while filtering background and ambient noises, enabling a clear connection to the parent unit.

Power Saving and Noise-Reducing: ECO is designed for power saving and noise-reducing with sound activated, you could focus on your things until the monitor is activated by Baby Unit sound. When the noise in baby room is under 40db over 20 seconds, ECO will be enabled and the monitor eliminate slight background noise until the noise over 40db and the monitor will be woke up.

Out of range indicator: If the parent unit is too far away from the baby unit, it will be "out of range" and the parent unit will emit consecutive beeps. The beeps will continue until the parent unit is moved back within the range of the baby unit.

Low battery indicator: If the parent unit is low on battery power, the unit will emit a beeping sound. The low battery beep will continue until the unit is plugged in.

Belt clip: Added convenience and portability is provided with a built-in belt clip on the parent unit. This feature allows parents the convenience to keep the unit with them when they move around the house, or other situations in which they could not keep it close.

Find the parent unit: This option serves to find the parent unit when it cannot be found. Press the page button on the baby unit, and the parent unit will emit a beep which you can deactivate by pressing any of the buttons on the parent unit.

IMPORTANT SAFETY INSTRUCTIONS

1. Read Instructions - All the safety and operating instructions should be read before the product is operated.
2. Retain Instructions - The safety and operating instructions should be retained for future reference.
3. Heed Warnings - All warnings in the operating instructions should be adhered to.
4. Follow Instructions - All operating and use instructions should be followed.
5. Cleaning - Unplug this product from the wall outlet before cleaning. Do not use liquid cleaners or aerosol cleaners. Use a damp cloth for cleaning.
6. Attachments - Do not use attachments not recommended by the product manufacturer as they may cause hazards.
7. Water and Moisture - Do not use this product near water. For example, near a bath tub, wash bowl, kitchen sink or laundry tub, in a wet basement, or near a swimming pool, and the like.
8. Accessories - Do not place this product on an unstable cart, stand, tripod, bracket, or table. The product may fall, causing serious injury to a child or adult, and serious damage to the product. Use only with a cart, stand, tripod, bracket, or table recommended by the manufacturer or sold with the product. Any mounting of the product should follow the manufacturer's instructions, and should use a mounting accessory recommended by the manufacturer.
9. Ventilation - Slots and openings in the cabinet are provided for ventilation as well to ensure reliable operation of the product and to protect it from overheating. These openings must not be blocked or covered. The openings should never be blocked by placing the product on a bed, sofa, rug, or other similar surfaces. This product should not be placed in a built-in installation such as a bookcase or rack unless proper ventilation is provided or the manufacturer's instructions have been adhered to.

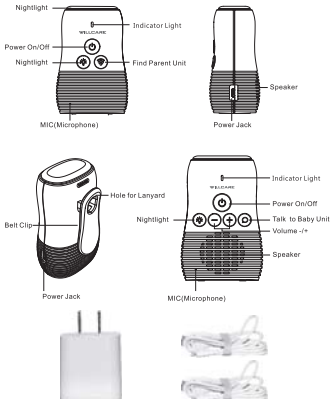
10. Power Sources - This product should be operated only from the type of power source indicated on the marking label. If you are not sure of the type of power supply to your home, consult your product dealer or local power company. For products intended to operate from battery power or other sources, refer to the operating instructions.
11. Power - Cord Protection - Power supply cords should be routed so that they are not likely to be walked on or pinched by items placed upon or against them, paying particular attention to cords at plugs, convenience receptacles, and the point where they exit from the product.
12. Power Lines - An outside antenna system should not be located in the vicinity of overhead power lines or other electric light or power circuits, or where it can fall into such power lines or circuits. When installing an outside antenna system, extreme care should be taken to keep from touching such power lines or circuits as contact with them might be fatal.
13. Overloading - Do not overload wall outlets, extension cords, or integral convenience receptacles as this can result in a risk of fire or electric shock.
14. Object and Liquid Entry - Never push objects of any kind into this product through openings as they may touch dangerous voltage points or short-out parts that could result in a fire or electric shock. Never spill liquid of any kind on the product.
15. Servicing - Do not attempt to service this product yourself as opening or removing covers may expose you to dangerous voltage or other hazards. Refer all servicing to qualified service personnel.
16. Damage Requiring Service - Unplug this product from the wall outlet and refer servicing to qualified service personnel under the following conditions:
 - a). When the power supply cord or plug is damaged,
 - b). If liquid has been spilled or objects have fallen into the product,
 - c). If the product has been exposed to rain or water,

- d). If the product does not operate normally by following the operating instructions. Adjusting only those controls that are covered by the operating instructions as an improper adjustment of other controls may result in damage and will often require extensive work by a qualified technician to restore the product to its normal operation,
 - e). If the product has been dropped or damaged in any way, and
 - f). When the product exhibits a distinct change in performance.
17. Replacement Parts - when replacement parts are required, be sure the service technician has used replacement parts specified by the manufacturer or have the same characteristics as the original part. Unauthorized substitutions may result in fire, electric shock, or other hazards.
 18. Safety Check - Upon completion of any service or repairs to this product, ask the service technician to perform safety checks to determine that the product is in proper operating condition.
 19. Wall or Ceiling Mounting - The product should be mounted to a wall or ceiling only as recommended by the manufacturer.
 20. Heat - The product should be situated away from heat sources such as radiators, heat registers, stoves, or other products (including amplifiers) that produce heat.

WARNING

- DO NOT expose the baby monitor to extreme cold, heat, moisture or direct sunlight.
- DO NOT put the product close to a heating source.
- DO NOT expose the batteries to excessive heat, such as bright sunshine or fire.
- DO NOT immerse the parent unit and the baby unit in water, and do not clean them under the tap.
- DO NOT use cleaning spray or liquid cleaners.
- Never place the baby unit inside the baby's crib or playpen.
- Never cover the baby unit nor parent unit with anything such as towel or blanket.
- To prevent strangulation with the power cord, always keep the baby unit and the power cord out of baby's reach, at least 1 meter away. Do not use extension cords.

COMPONENTS/OVERVIEW



Baby Unit	1
Parent Unit	1
Power Adapter	1
User Manual	1

SET UP & USE

Initial Setup:
To set up the system, you will need two adults. One adult should be in the nursery with the Baby Unit (transmitter), while the other is in a different room with the Parent Unit (receiver).

Note: The Parent Unit includes a rechargeable battery and it should be charged for 4-5 hours before using the monitor in portable mode. Only charge the battery when the battery is low to achieve optimal battery life.

Step 1: Place the Baby Unit in the nursery near the crib, on a flat surface. Ensure the cord is more than 3 feet from the crib and out of baby's reach. Plug the AC adapter into a standard electrical outlet.

Step 2: Press the power button on the front of the Baby Unit for 2 seconds to turn the unit on.

Step 3: Place the Parent Unit in the room from which you want to monitor the baby. Plug the AC adapter into a standard electrical outlet.

Step 4: Press the power button on the front of the Parent Unit for 2 seconds to turn it on.

Step 5: Have the adult in the baby's room speak at different levels to the volume to the desired setting. The volume can be adjusted up or down using the Volume Control buttons on the side of the Parent Unit.

Baby Unit Setup in Nursery:
Place the Baby Unit (transmitter) on a flat surface, such as a bureau or shelf. NEVER place the Baby Unit or cords within 3 feet of the crib.



Power on or off the baby unit

To turn on the baby unit: Press and hold the power button until the POWER light turns on.
To turn off the baby unit: Press and hold the power button until the POWER light turns off.

Power on or off the parent unit

To turn on the parent unit: Press and hold the power button until the POWER light turns on.
To turn off the parent unit: Press and hold the power button until the POWER light turns off.

To adjust the speaker volume

Press "-" to decrease the volume and "+" to increase the volume.

To turn on/off the nightlight

Pressing the light button on the parent unit or baby unit can both turn on/off the nightlight on the baby unit.

To talk to your baby

Press the talk button to talk to the baby unit. Release it when you finish talking.

ECO mode

ECO mode is designed for power saving and noise-reducing with sound activated. When the noise in baby room is under 40db over 20seconds, ECO will be enabled and the monitor eliminate slight background noise until the noise over 40db and the monitor will be woke up. It is a default setting in existing DBM-8.

To reset/re-pair the baby unit and parent unit
Make sure both units are turned off and Baby Unit is plugged in, press both units' power button at the same time for at least 5 seconds until the indicator light of both units turn into green.

To find the parent unit

Press the find button on baby unit, and the parent unit will emit consecutive beeps. The beeps will continue until the parent unit

is found. Press any button on the baby unit or parent unit to stop the beeps.

Note: When the parent unit is turned off it cannot beep even though you pressed the find button.

Operating range

The operating range of the baby monitor is up to 300 meters (1000 feet) outdoors or 50 meters (160 feet) indoors. The actual operating range may vary depending on environmental conditions and other interferences such as walls, doors, and other obstructions.

PROBLEM SOLVING

No sound coming from the parent unit

Make sure both the Baby Unit and Parent Unit are plugged in and powered on.
Make sure electrical outlets are working.
Set volume to a higher setting.
Press any button of Parent Unit to confirm ECO is not enabled.
Reset/Re-pair the baby unit and parent unit.

Squealing noise

Move the Parent Unit and Baby Unit farther apart. The squealing sound indicates that the units are too close together.
Turn down the volume on the Parent Unit.

Weak reception or no reception

Make sure both the Parent Unit and Baby Unit are turned on.
Move the Parent Unit closer to the Baby Unit.
Make sure the battery in the Parent Unit is fully charged.
Reset/Re-pair the baby unit and parent unit.

Note

When any problem comes and you can't solve it by yourself, please feel free to contact the seller whom you bought them from.

FCC Statement:

This device complies with part 15 of the FCC Rules. Operation is subject to the following two conditions: (1) This device may not cause harmful interference, and (2) this device must accept any interference received, including interference that may cause undesired operation.
This equipment has been tested and found to comply with the limits for a Class B digital device, pursuant to part 15 of the FCC Rules. These limits are designed to provide reasonable protection against harmful interference in a residential installation. This equipment generates, uses and can radiate radio frequency energy and, if not installed and used in accordance with the instructions, may cause harmful interference to radio communications. However, there is no guarantee that interference will not occur in a particular installation. If this equipment does cause harmful interference to radio or television reception, which can be determined by turning the equipment off and on, the user is encouraged to try to correct the interference by one or more of the following measures:
—Reorient or relocate the receiving antenna.
—Increase the separation between the equipment and receiver.
—Connect the equipment into an outlet on a circuit different from that to which the receiver is connected.
—Consult the dealer or an experienced radio/TV technician for help.
Caution: Any changes or modifications not expressly approved by the party responsible for compliance could void the user's authority to operate the equipment.
This equipment complies with FCC radiation exposure limits set forth for an uncontrolled environment.
This transmitter must not be co-located or operating in conjunction with any other antennas or transmitters.

DBM-8P SAR

The highest SAR value reported under this standard during DBM-8P product certification for use at the ear is 0.013 W/kg and when properly worn the body is 0.059W/kg. This device was tested for typical body-worn operations. To comply with RF exposure requirements, a minimum separation distance of 0 cm. must be maintained between the user's body and the DBM-8P product, including the antenna. Use by this device should not contain any metallic components. Body-worn accessories that do not meet these requirements may not comply with RF exposure requirements and should be avoided.