

Toast Terminal Installation Guide and User Manual

Terminal (TT300) Only Setup Guide

Follow these instructions if the Toast Terminal will be setup on its own without peripheral devices. To fully set up this device, you will need Wifi and/or Ethernet internet access and a Toast account. Only account owners may set up a Toast account. Account owners and authorized users can set up a Toast Terminal.

Toast's hardware is tested and certified for compliance in accordance with country-specific regulations and is only approved for use in the country where sale is intended. Hardware sold or intended for sale in one country is not approved for use outside of such country.

Site Readiness

1. Before you get started, identify where you want your Toast Terminal to be located. Make sure there is a power outlet and wall ethernet port in reach.
2. Confirm you have unpacked a Toast Terminal box with the following items included in the box:
 - ☐ 1x Toast Terminal



- ☐ 1x 65W USB-C Power Supply with AC power cord (NOTE if a printer is being used please see Terminal with Printer Setup Guide)



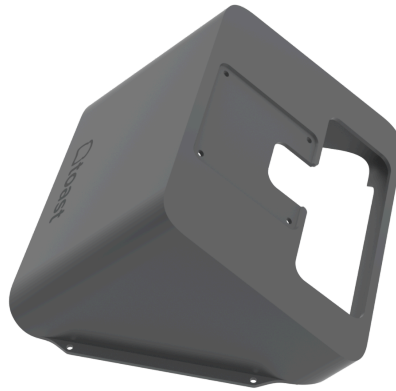
- ☐ 1x Ethernet Cable

Setup

1. Place the Toast Terminal in your preferred location
2. Lift up on the neck until the Terminal screen has reached its highest point
3. Tilt the Terminal screen forward towards the front Toast Logo until it stops rotating
4. Gently push up on the Base Cover until it releases from the base and opens revealing the ports in the base
 - a. If you intend to use a Toast Guest Experience Device with this Terminal, complete steps found in TGD300 Installation Guide and User Manual
5. Plug in the Orange USB-C Power cable attached to the Power Supply into the port marked in orange and screw in the thumb screw for a secure connection
 - a. If you intend to use a Toast Printer with the Terminal complete setup instructions found in the TP300 Instruction Manual and use the Orange USB-C cable from the printer instead of the Power Supply
6. Plug in the Yellow Ethernet cable into the RJ45 ethernet port marked in yellow, plugging the opposite end into the wall ethernet port
7. Plug in the AC power cable to both the power supply and then the nearest power outlet
8. Choose any of the 4 cable exits in the base of the Terminal and secure the cables in the exit channel
9. Wrap any remaining cable around the cleat inside the base
10. Close the Base Cover and rotate the screen to a comfortable position
11. If you intend to use a Toast Direct Attach Card Reader with this Terminal, complete steps in the Card Reader Installation Guide

12. Press the orange power button on the back cover of the Terminal Screen for 3 seconds to power on the Terminal
13. Follow the prompted instruction when the screen powers on to complete the Toast Terminal Setup

Base Setup



1. Remove the Toast Terminal Screen from the packaging and place face down on a flat clean surface
2. On the back of the Toast Terminal Screen remove the cable cover
3. Using the Screw Driver provided in the welcome kit unscrew the 2 captive screws on the cable hold down tab
4. Plug in the Orange USB-C Power cable attached to the Power Supply into the port marked in orange and screw in the thumb screw for a secure connection
 - a. If you intent to use a Toast Printer with the Terminal complete setup instructions found in the TP300 Instruction Manual and use the Orange USB-C cable from the printer instead of the Power Supply
5. Plug in the Yellow Ethernet cable into the RJ45 ethernet port marked in yellow
6. Feed the cables into the slots in the back of the Terminal Screen and screw down the Cable Stay ensuring the cables stayed in each slot
7. Install the cable cover back on the Terminal Screen covering the ports
8. Remove the Base from its packaging including the 4x Mounting Screws
9. Align the base so that the 4 vesa mount holes align with the 4 posts on the universal back cover and the opening below aligns with the cable ports on the back of the Toast Terminal Screen
10. Feed the Power Cable and Ethernet Cable through the hole in the base

11. Using the 4 thumb screws included with the base screw the base to the Terminal Screen
12. Flip the Terminal Screen and Base over placing the assembly with the rubber pads face down
13. Plug in the Ethernet cable and Power Supply AC cable into their respective wall outlets
14. Press the orange power button on the back cover of the Terminal Screen for 3 seconds to power on the Terminal
15. Follow the prompted instruction when the screen powers on to complete the Toast Terminal Setup

Mount Setup

1. Follow the instructions found in the [Toast Flex 22" Mount Kit Easy Install Guide](#), Steps 1, 2a or 2b or 2c
2. Remove the Toast Terminal Screen from the packaging and place face down on a flat clean surface
3. On the back of the Toast Terminal Screen remove the cable cover
4. Using the Screw Driver provided in the welcome kit unscrew the 2 captive screws on the cable hold down tab
5. Plug in the Orange USB-C Power cable attached to the Power Supply into the port marked in orange and screw in the thumb screw for a secure connection
 - a. If you intent to use a Toast Printer with the Terminal complete setup instructions found in the TP300 Instruction Manual and use the Orange USB-C cable from the printer instead of the Power Supply
6. Plug in the Yellow Ethernet cable into the RJ45 ethernet port marked in yellow
7. Feed the cables into the slots in the back of the Terminal Screen and screw down the Cable Stay ensuring the cables stayed in each slot
8. Install the cable cover back on the Terminal Screen covering the ports
9. Install VESA plate on the terminal using the 4 thumb screws to attach the VESA plate onto the back of the Terminal Screen
10. Attach the Terminal Screen onto the mount using the 4 provided screws
11. Slide the VESA plate onto the end of the arm within the support tabs
12. Secure in place using the vertical thumb screw
13. Plug in the Ethernet cable and Power Supply AC cable into their respective wall outlets
14. Press the orange power button on the back cover of the Terminal Screen for 3 seconds to power on the Terminal
15. Follow the prompted instruction when the screen powers on to complete the Toast Terminal Setup

Note: Installation of the mount should be no higher than 6.5 feet (2 meters)

User Manual

Product Name: Toast Terminal

Product Model: TT300

Precautions

CAUTION: READ ALL SAFETY INFORMATION

Failure to follow the instructions for proper set up, use, and care for your device in this manual can increase the risk of serious personal injury, death, or property damage. Any misuse or abuse of your device is not covered under the Toast Limited Warranty.

- Keep plastic bags away from babies and children to avoid the risk of suffocation.
- Please insert the AC plug into the AC outlet according to the identifying input on the power adapter.
- Do not store or use the device and/or its accessories near potentially flammable or explosive gasses, liquids, or materials
- Non-professional employees should not open the power adapter case to avoid danger. Improper use of the adapter may result in fire or explosion. Do not heat, open, puncture, mutilate or dispose of your device or its adapter in fire. Always use a proper power supply for your device.
- Adapters should be installed near the equipment and be easily accessible.
- There is the danger of an explosion if the battery is incorrectly replaced. When replacing the battery, use only the recommended battery type. Dispose of batteries according to local ordinances and regulations.
- Please make sure that the operating temperature of the device and power adapter is between 0°C to 50°C.
- Do not use the device near water or in a damp or excessively humid environment (e.g., in a damp basement, swimming pool, bathtub, shower, sink, etc.).
- Do not immerse the Toast Terminal in any liquid, this device's prolonged exposure to water or other liquids may cause injury, death, property damage, and/or may damage your device.
- Do not use the device in extremely cold or hot environments, e.g. around fire or a lit cigarette.
- Do not smash, throw, or bend the device.
- Use the device in a clean and dust free environment and prevent small items from falling into the Toast Terminal.
- Radio-frequency emissions and magnetic fields from electronic equipment can negatively affect the operation of other electronic equipment, causing them to malfunction. Although this device is designed, tested, and manufactured to comply with applicable regulations, the device may cause unintentional interference in other electronic equipment. If any individual

suspects that a Toast device is interfering with a medical device, such individual should stop using it and consult a physician or the relevant medical device manufacturer.

Other Important Safety Instructions:

- Avoid installing or using during a thunder and/or lightning storm.
- Cut off the power immediately if there is an abnormal smell, overheating, or smoke.
- Please do not modify the structure of this product and any included parts in any way. Use only as intended. If in doubt, consult a professional.

DISCLAIMER:

- Toast is not responsible for damage resulting from use of the Toast Terminal not described in this guide.
- You may not modify or change this product in any way without the consent of Toast. Toast is not responsible for the use of this product with any third party devices not approved by Toast.
- As the product is updated, some details of this manual may not match such updated features. Toast reserves the right to update these instructions at any time in its sole discretion.

FCC Regulations

This device complies with part 15 of the FCC Rules. Operation is subject to the following two conditions:

1. This device may not cause harmful interference, and (2) this device must accept any interference received, including interference that may cause undesired operation.
2. This device has been tested and found to comply with the limits for a Class B digital device, pursuant to Part 15 of the FCC Rules. These limits are designed to provide reasonable protection against harmful interference in a residential installation. This equipment generates, uses, and can radiate radio frequency energy and, if not installed and used in accordance with the instructions, may cause harmful interference to radio communications. However, there is no guarantee that interference will not occur in a particular installation.

If this equipment does cause harmful interference to radio or television reception, which can be determined by turning the equipment off and on, the user is encouraged to try to correct the interference by one or more of the following measures:

- Reorient or relocate the receiving antenna.
- Increase the separation between the equipment and receiver.
- Connect the equipment into an outlet or a circuit different from that to which the receiver is connected.

- Consult the dealer or an experienced radio/TV technician for help.

To comply with RF exposure requirements, a minimum separation distance of 20cm must be maintained between the user's body and the POS machine, including the antenna. Caution: Changes or modifications not expressly approved by the party responsible for compliance could void the user's authority to operate the equipment.

Toast Inc, 333 Summer Street, Boston, MA, 02210, United States of America

FCC ID: 2AMNG-TT300

ISED Regulations

This device contains license-exempt transmitter(s)/receiver(s) that comply with Innovation, Science, and Economic Development Canada's license-exempt Rss(s). Operation is subject to the following two conditions: (1) This device may not cause interference. (2) This device must accept any interference, including interference that may cause undesired operation of the device. L'émetteur/récepteur exempt de licence contenu dans le présent appareil est conforme aux CNR d'Innovation, Science et Développement économique Canada applicables aux appareils radio exempts de licence. L'exploitation est autorisée aux deux conditions suivantes: (1) L'appareil ne doit pas produire de brouillage, et (2) L'appareil doit accepter tout brouillage radioélectrique subi, même si le brouillage est susceptible d'en compromettre le fonctionnement.

This equipment complies with ISED radiation exposure limits set forth for an uncontrolled environment. This equipment should be installed and operated with a minimum distance of 20 cm between the radiator and a human body.

Cet équipement est conforme aux limites d'exposition aux rayonnements ISED établies pour un environnement non contrôlé. Cet équipement doit être installé et utilisé avec une distance minimale de 20 cm entre le radiateur et un corps humain.

CAN ICES / NMB

IC: 23177-TT300

EU Regulations

The manufacturer of this device declares that this device is in compliance with the essential requirements and other relevant provisions of the Radio Equipment Directive 2014/53/ EU. For a description of accessories and components, including software, which allow the radio equipment to

operate as intended, please contact Toast at +35319131083 or visit <https://pos.toasttab.com/contact> to request a declaration of conformity.

This device may be operated in all member states of the EU. Observe the national and local regulations in the location where the device is to be used. This device may have restrictions on use in some or all member states of the European Union (EU). Adapters shall be installed near the equipment and shall be easily accessible. The device complies with RF specifications when the device is used 20cm from your body.

The Official Journal of the European Union Commission Decision of 12 February 2007 states that in the frequency band 5.150 to 5.350 GHz, wireless access systems (WAS), including radio local area networks (RLANs), shall be restricted to indoor use.

EU Importer: Toasttab Ireland

Address: 124 St Stephens Green, Dublin 2, Ireland D02C628

BE	BG	CZ	DK	DE	EE	IE	EL	ES	FR
HR	IT	CY	LV	LT	LU	HU	MT	NT	AT
PL	PT	RO	SI	SK	FI	SE			

United Kingdom Statement of Compliance



Toast hereby declares that this radio equipment is in compliance with the Radio Equipment Regulations 2017 and the Restriction of the Use of Certain Hazardous Substances in Electrical and Electronic Equipment Regulations 2012.

Any radio operation limitations within the UK are identified in Appendix A of UK Declaration of Conformity.

Restriction or Requirement in the UKCA : The device is restricted to indoor use only when operating in 5150-5350 MHz frequency range in the following Member States.

Use only the adapter supplied with the device.

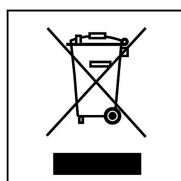
Please contact Toast at +442045713302 or visit <https://pos.toasttab.com/contact> to request a declaration of conformity.

UK Importer: Toasttab UK Limited

Address: 3rd Floor 1 Ashley Road, Altrincham, Cheshire, UK WA14 2DT



WLAN 5GHz band: for indoor use only.



Waste Electrical and Electronic Equipment (WEEE)

This symbol means that according to local laws and regulations your product and/or its battery shall be disposed of separately from household waste. When this product reaches its end of life, take it to a collection point designated by local authorities. Proper recycling of your product will protect human health and the environment.

Notice

Adapters shall be installed near the equipment and shall be easily accessible. The device complies with RF specifications when the device is used 20cm from your body.

Max, radio-frequency power transmitted	BT 2402-2480 MHz: 6 dBm
	BLE 2402-2480 MHz: 5 dBm
	2.4G WIFI 2412-2472 MHz: 15 dBm
	5G WIFI 5150-5250 MHz: 12 dBm
	5G WIFI 5725-5850 MHz: 12 dBm

Important! The AC power cord must be connected to an AC power outlet with a grounding connection.