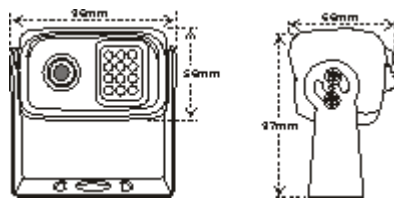


This product is mainly used in the field of vehicle monitoring, the purpose is:

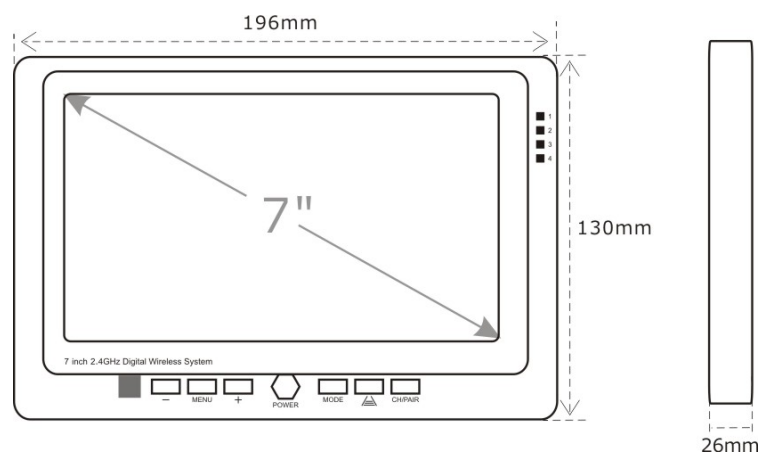
1. Wireless transmits the image back of the car to the front monitor when reversing, so the driver can reverse more secure and efficient.
2. Reduce the blind spot of the driver, make driving safer.
3. Monitor the place you want in the car. This system consists of a monitor and a camera, one monitor can be equipped at most four cameras, all of them are transmitted via 2.4 G wireless signal. Before using, you need to pair the camera to the monitor, the pairing band range is between 2403~2478. Choose one of the channel in the monitor to pair when you just need one camera to monitor; Pair the rest three channels in turn if you need multiple cameras. It can work automatically as soon as pair successfully.

## Unit Dimension

Camera



Monitor

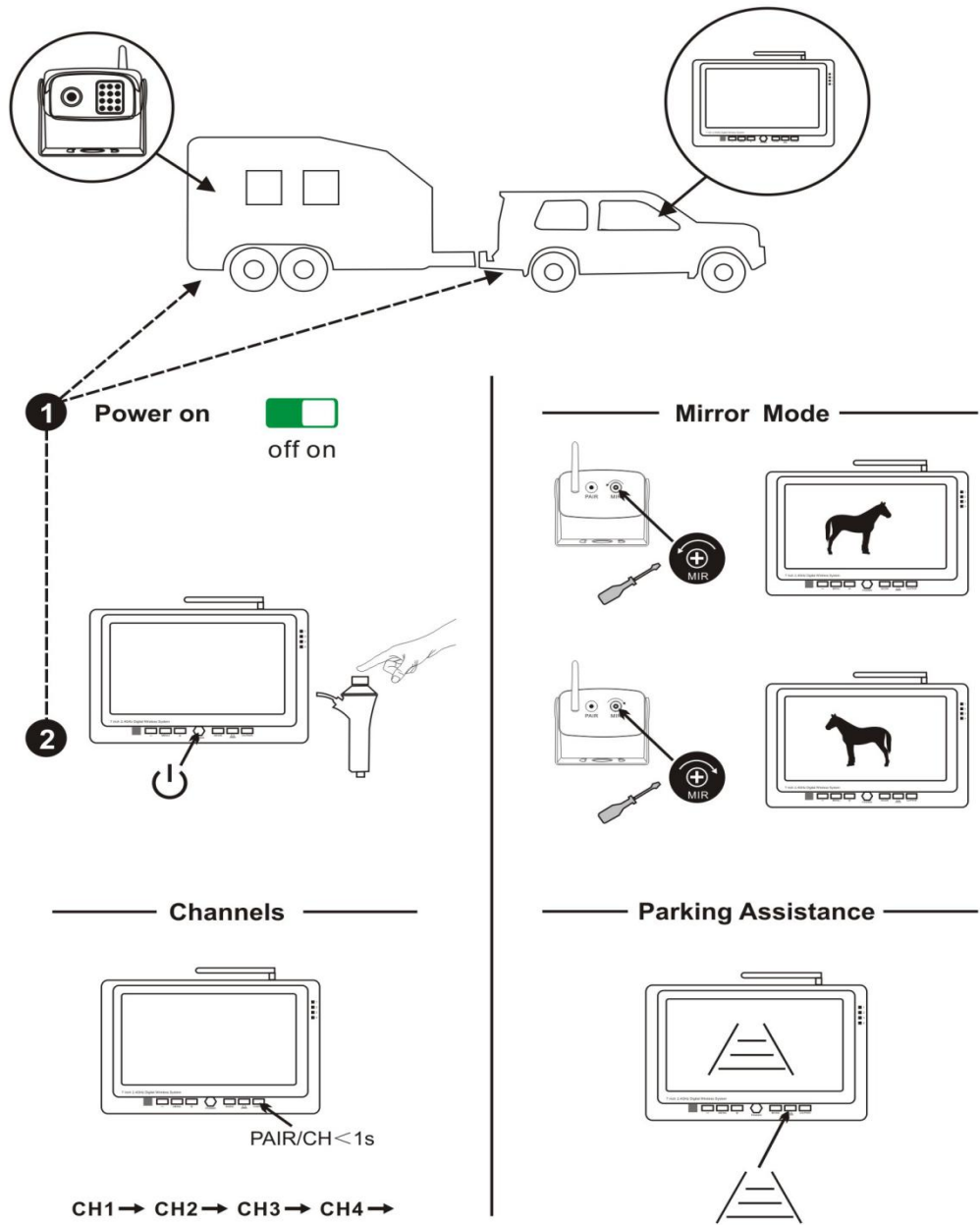


## Menu

- 1、 Contrast
- 2、 Brightness
- 3、 Saturation
- 4、 Language(English 中文 Pyccknn Portuguese Espanoi Italiano Deutsch Francais)
- 5、 Reset NO/YES

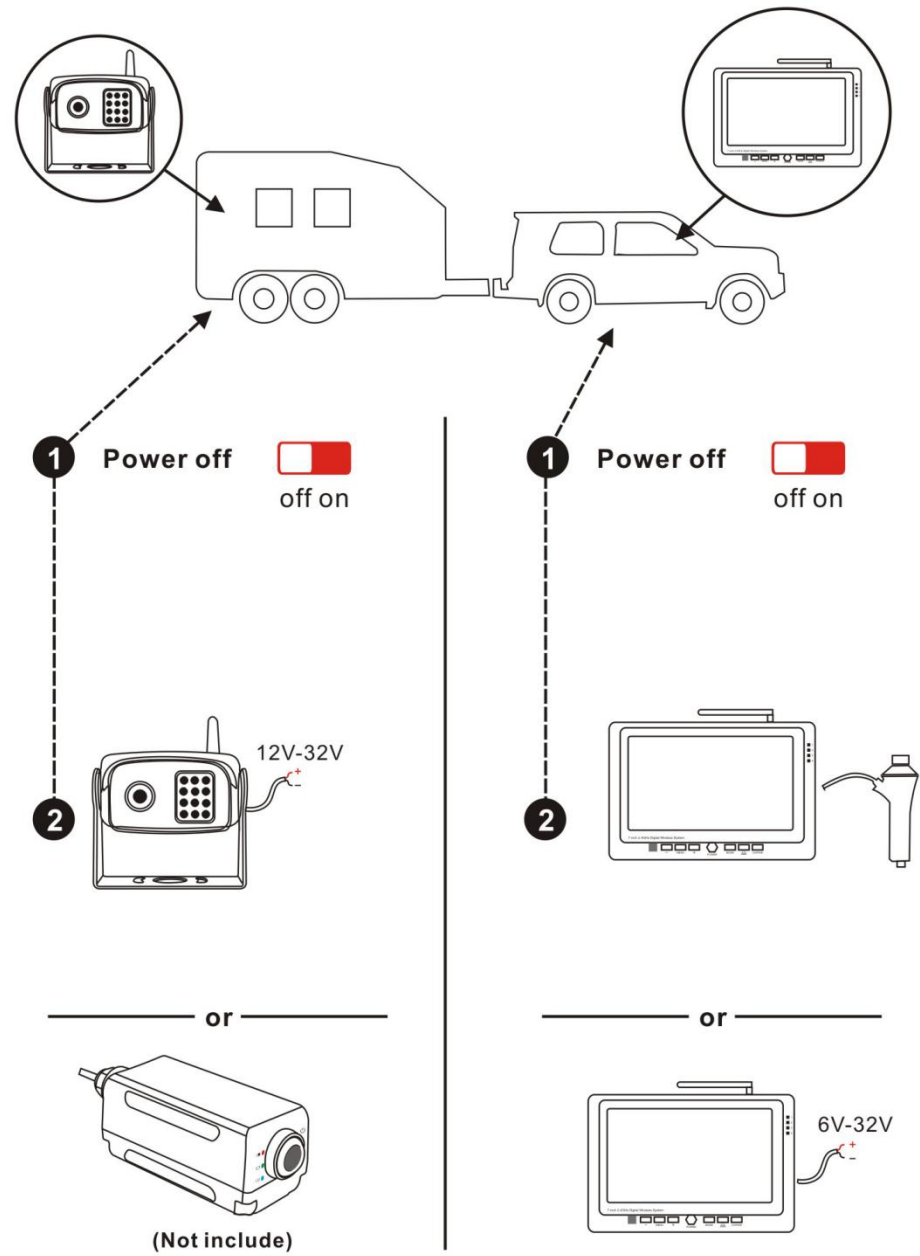
# OPERATION

## OPERATION



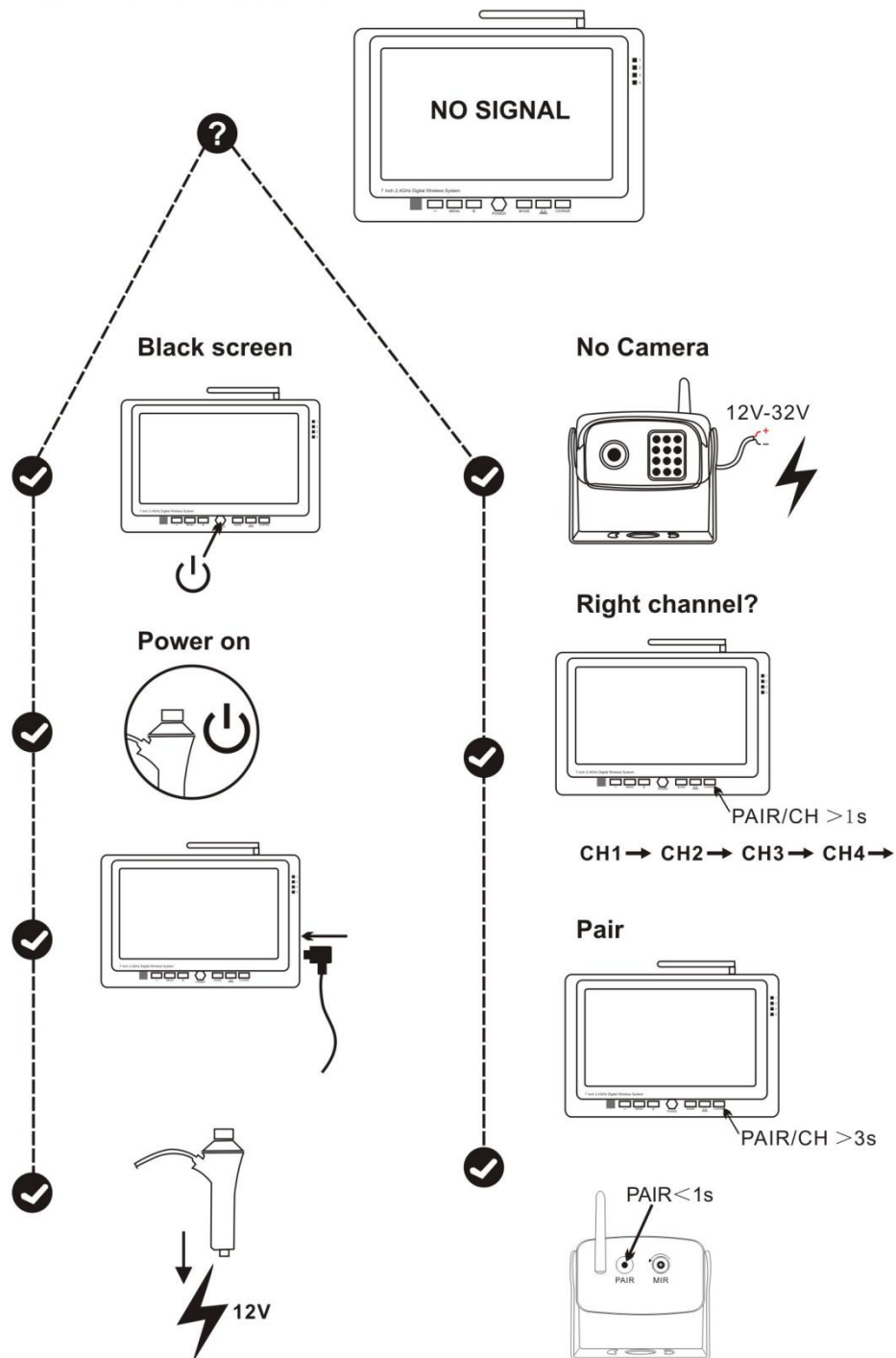
# INSTALLATION

## INSTALLATION



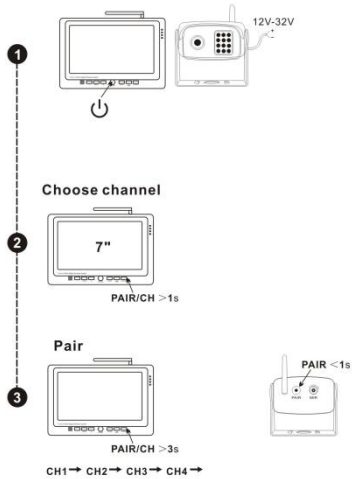
# TROUBLESHOOTING

## TROUBLESHOOTING



# EXTRA CAMERA

## EXTRA CAMERA



### How to pair or replace a camera?

Press monitor's PAIR /CH button, when LED flashing, press pair key on camera rear side.

## How to pair or replace a camera?

Press monitor's PAIR /CH button, when LED flashing, press pair key on camera rear side.

## FAQ

### 1. Is the signal between the camera and the receiver encrypted?

Yes.

### 2. How many cameras does the system support?

4 cameras.

### 3. Why does the frame rate sometimes drop when I am driving?

When driving the signal reception might drop sometimes. This occurs as the signal to the receiver is

constantly transmitted from different angles. This is considered normal when transmitting wirelessly.

### 4. Is the camera water resistant?

The camera is Ip66 classed. This means that the camera is well protected from both dust and humidity.

It can be placed outside and can be cleaned using a pressure washer.

### 6. Can I hear sound from the camera?

No, the camera does not have a microphone.

### 7. I am using the camera for reversing, how do I mirror the image?

Please see the instructions in the "Operation" section.

### 8. What do I do if I have bad reception on the LCD-monitor?

Start by reading through the troubleshooting. If troubleshooting doesn't help, welcome to contact us.

9. Will the camera break at very low temperatures?

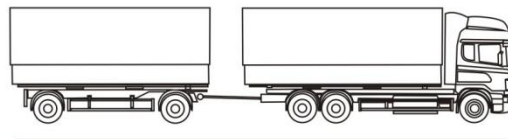
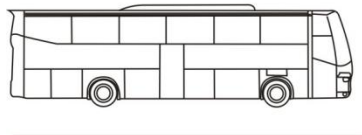
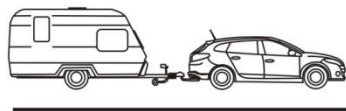
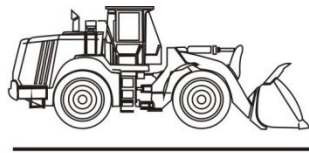
No, at very low temperatures the picture might tone red. At extremely low temperatures the camera

might turn off. However, when the temperature gets higher again the camera will regain its functionality.

12. Further questions?

you are always welcome to contact us.

## MANY APPLICATIONS



### FCC Warning Statement

Changes or modifications not expressly approved by the party responsible for compliance could void the user's authority to operate the equipment. This equipment has been tested and found to comply with the limits for a Class B digital device, pursuant to Part 15 of the FCC Rules. These limits are designed to provide reasonable protection against harmful interference in a residential installation. This equipment generates uses and can radiate radio frequency energy and, if not installed and used in accordance with the instructions, may cause harmful interference to radio communications. However, there is no guarantee that interference will not occur in a particular installation. If this equipment does cause harmful interference to radio or television reception, which can be determined by turning the equipment off and on, the user is encouraged to try to correct the interference by one or more of the following measures:

- - Reorient or relocate the receiving antenna.
- - Increase the separation between the equipment and receiver.
- - Connect the equipment into an outlet on a circuit different from that to which the receiver is connected.
- - Consult the dealer or an experienced radio/TV technician for help.

This device complies with Part 15 of the FCC Rules. Operation is subject to the following two conditions:

(1) This device may not cause harmful interference, and

(2) This device must accept any interference received, including interference that may cause undesired operation.