

Internal Photos

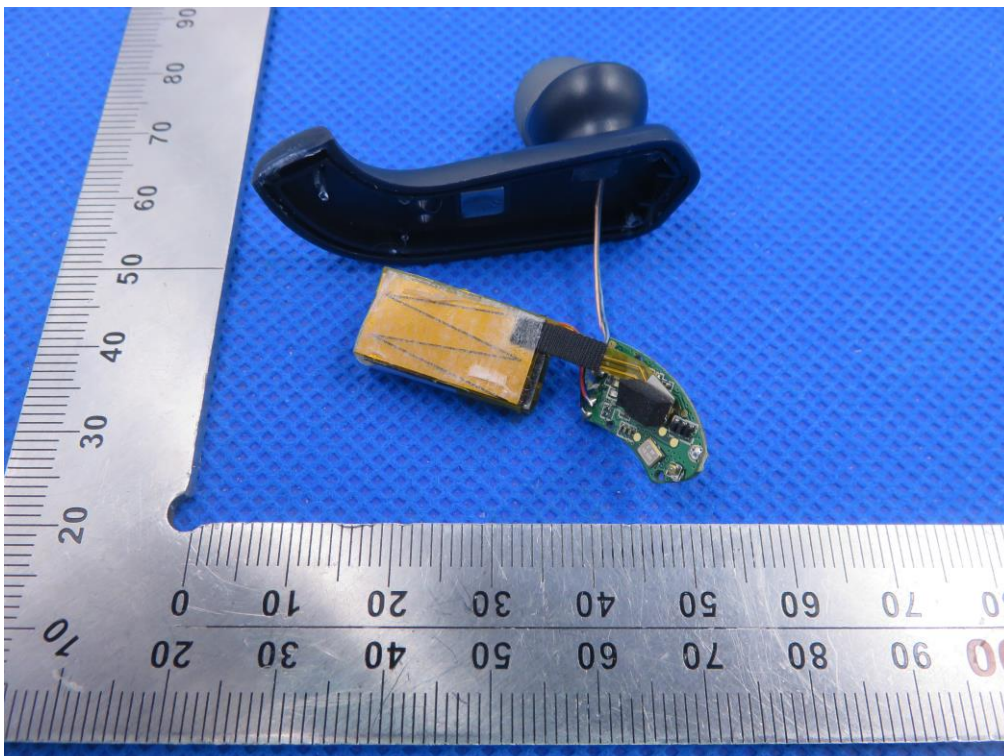
Test Model: T1

Left

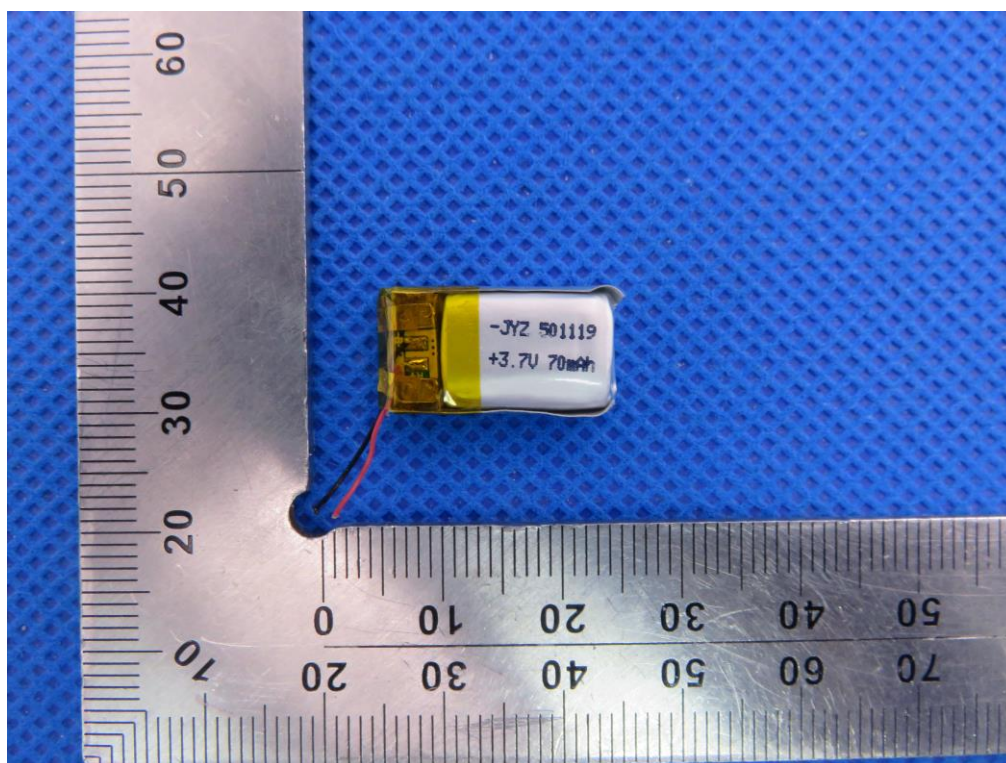
OPEN VIEW OF EUT-1



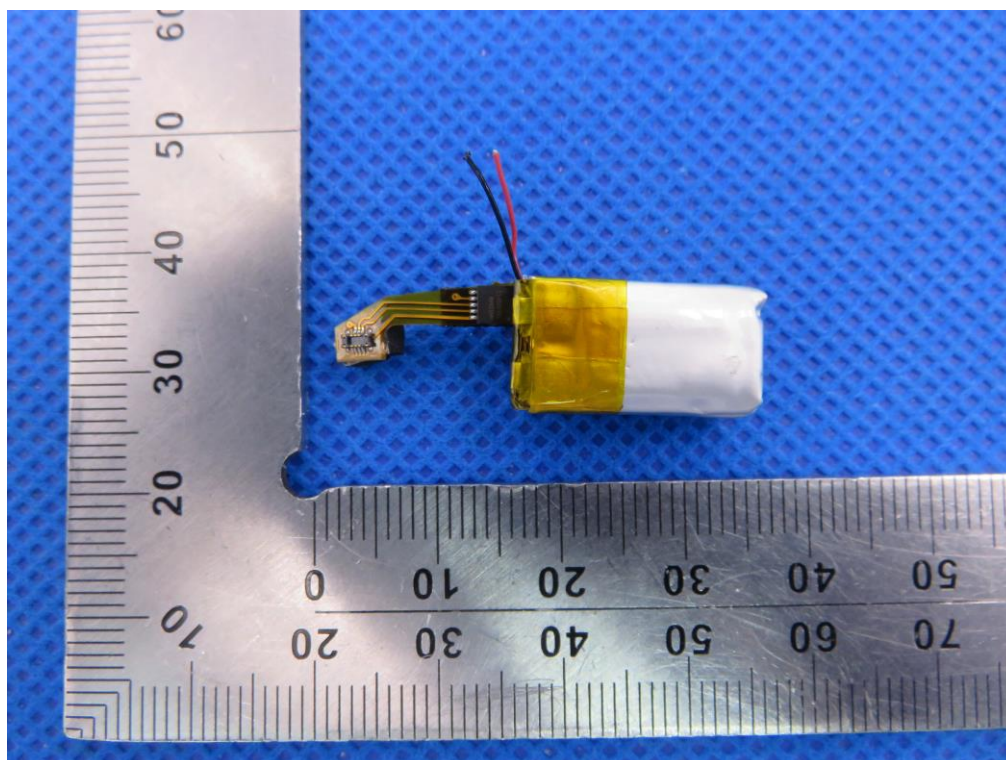
OPEN VIEW OF EUT-2



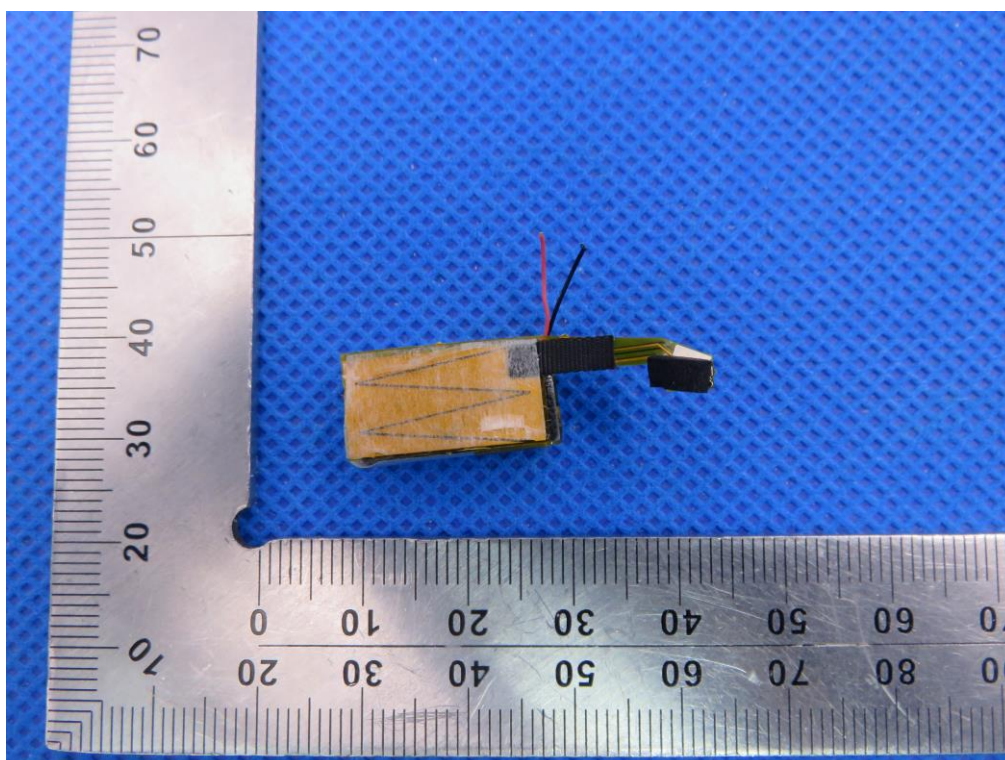
VIEW OF BATTERY-1



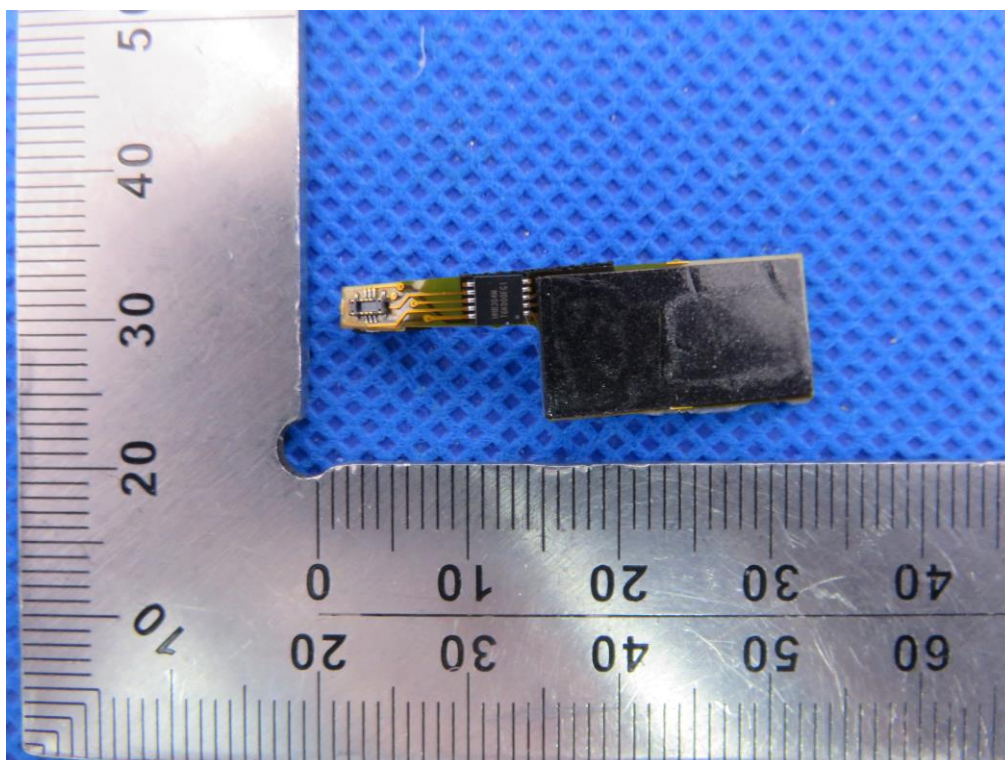
VIEW OF BATTERY-2



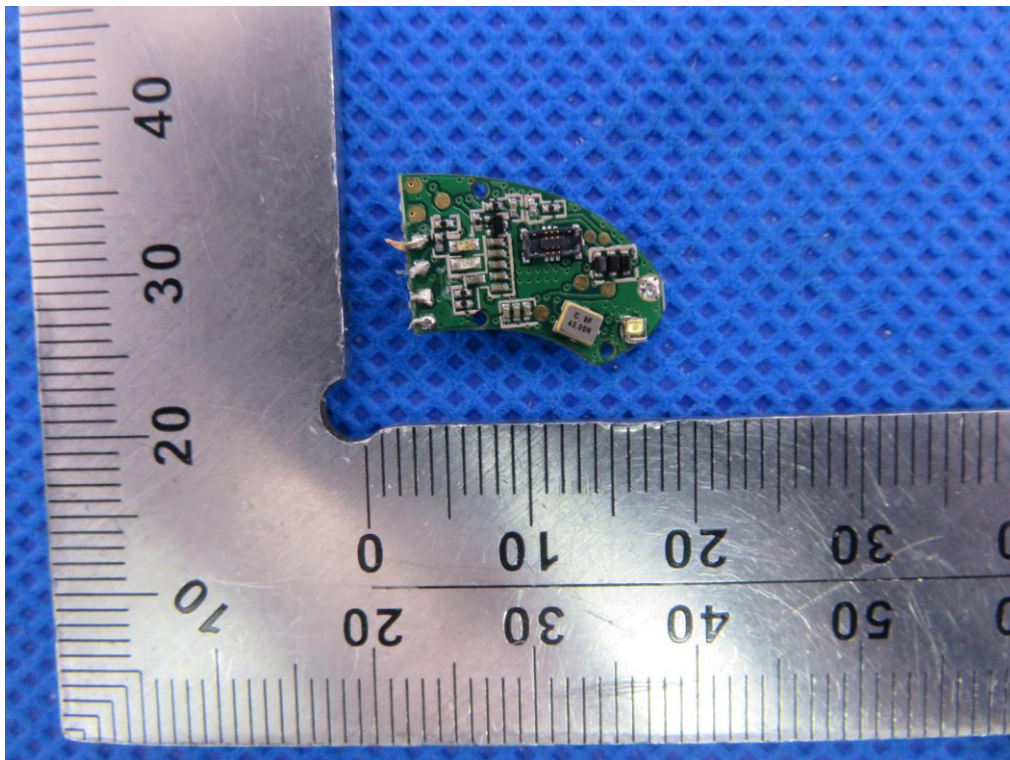
INTERNAL VIEW OF EUT-1



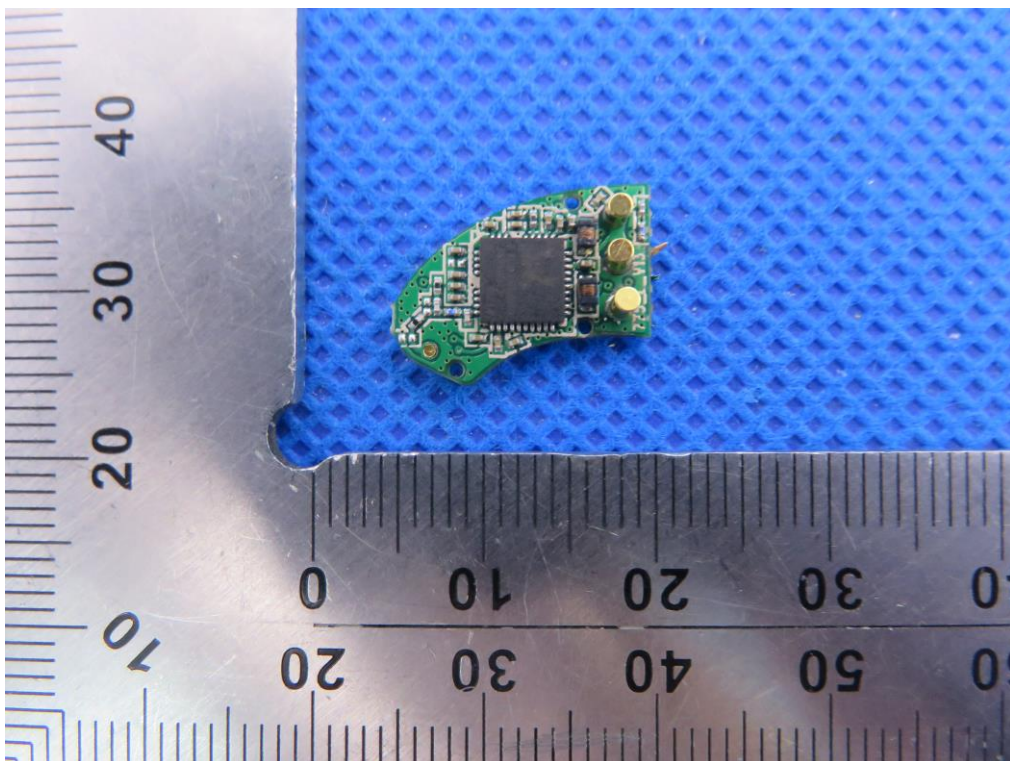
INTERNAL VIEW OF EUT-2



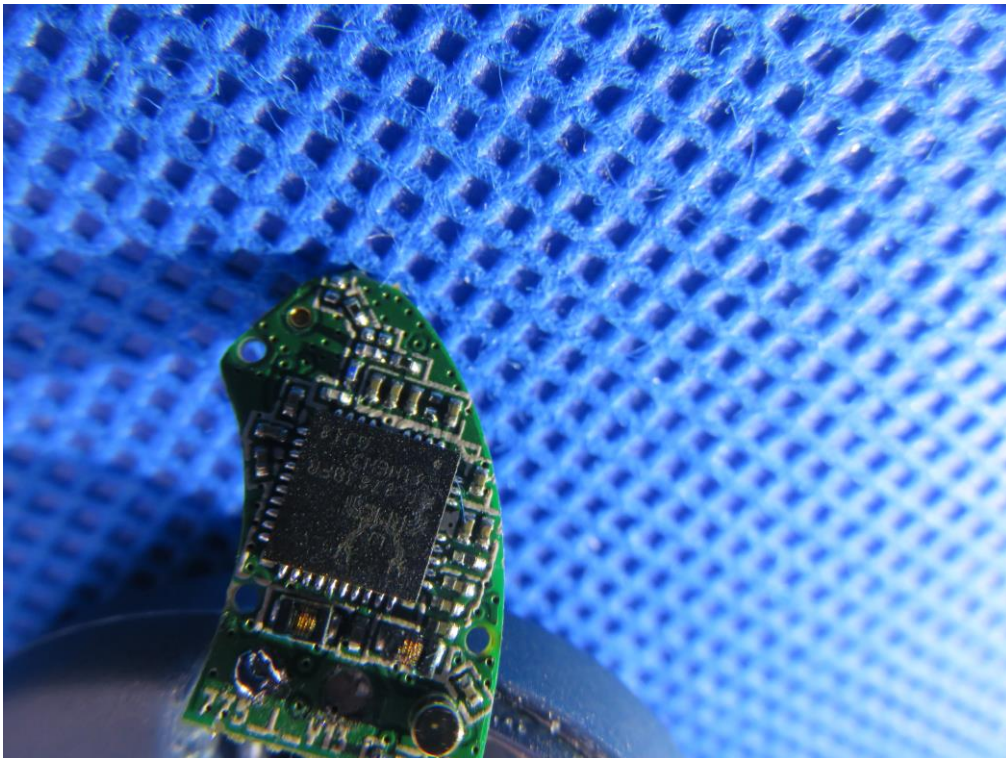
INTERNAL VIEW OF EUT-3



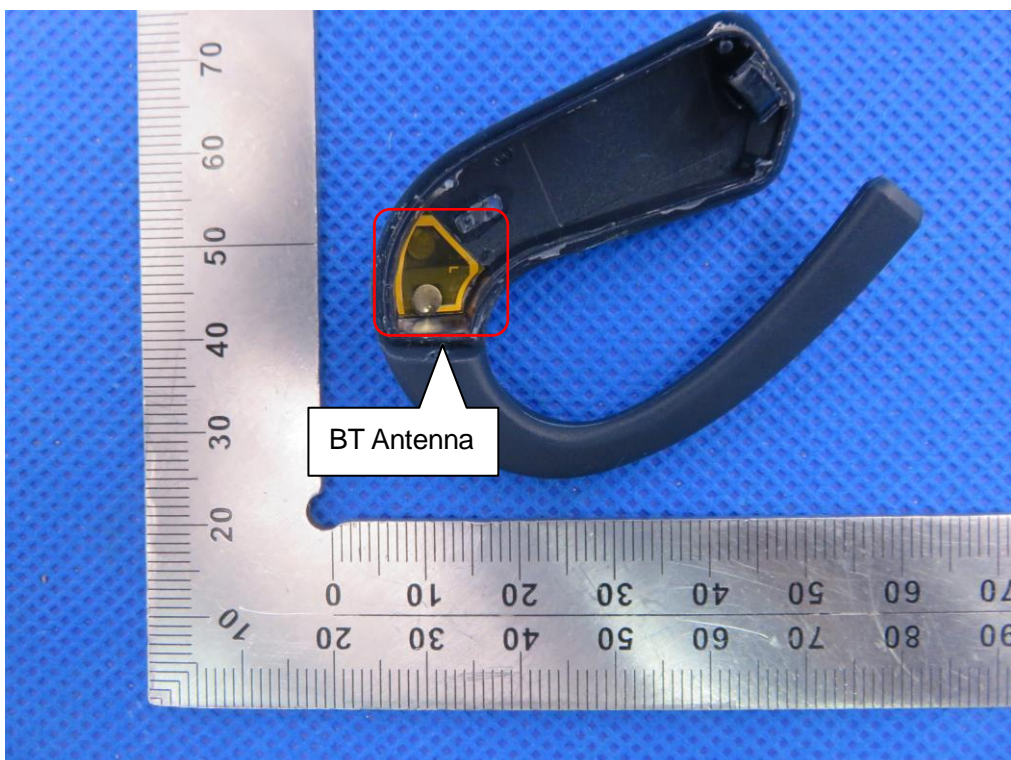
INTERNAL VIEW OF EUT-4



INTERNAL VIEW OF EUT-5



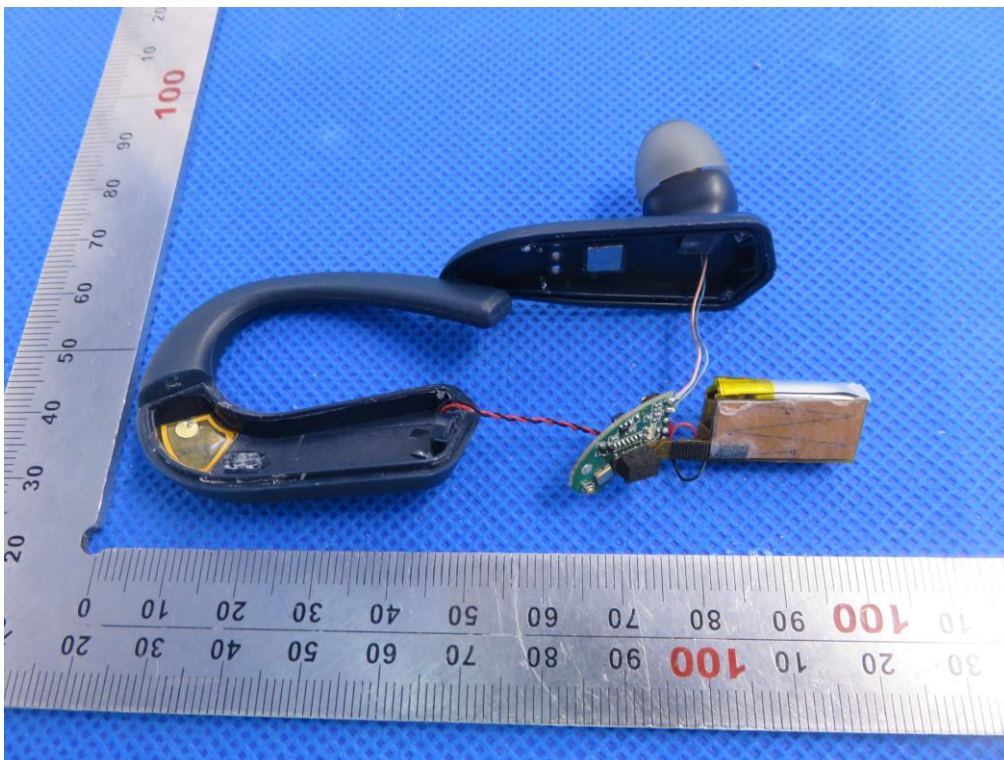
INTERNAL VIEW OF EUT-6



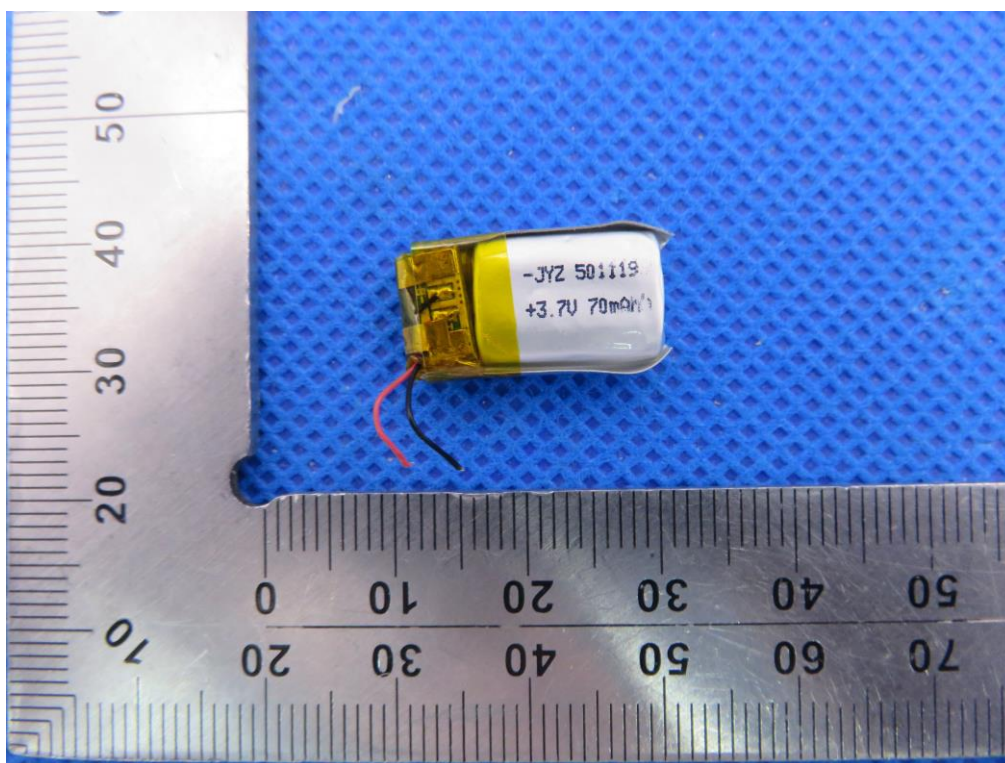
Right
OPEN VIEW OF EUT-1



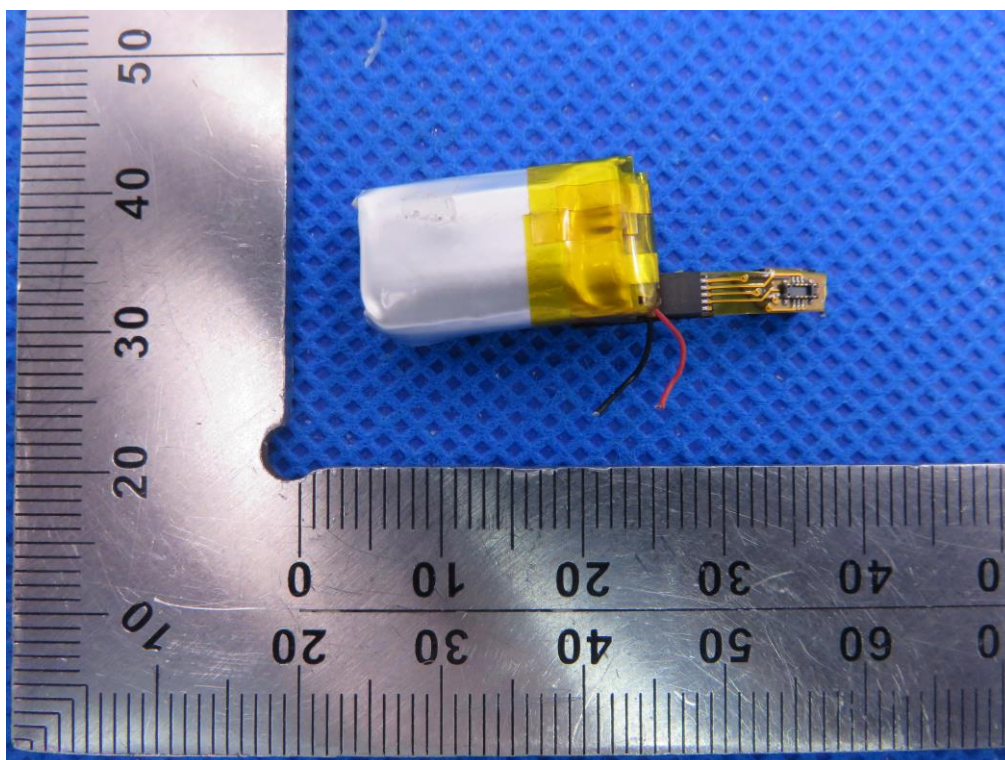
OPEN VIEW OF EUT-2



VIEW OF BATTERY-1

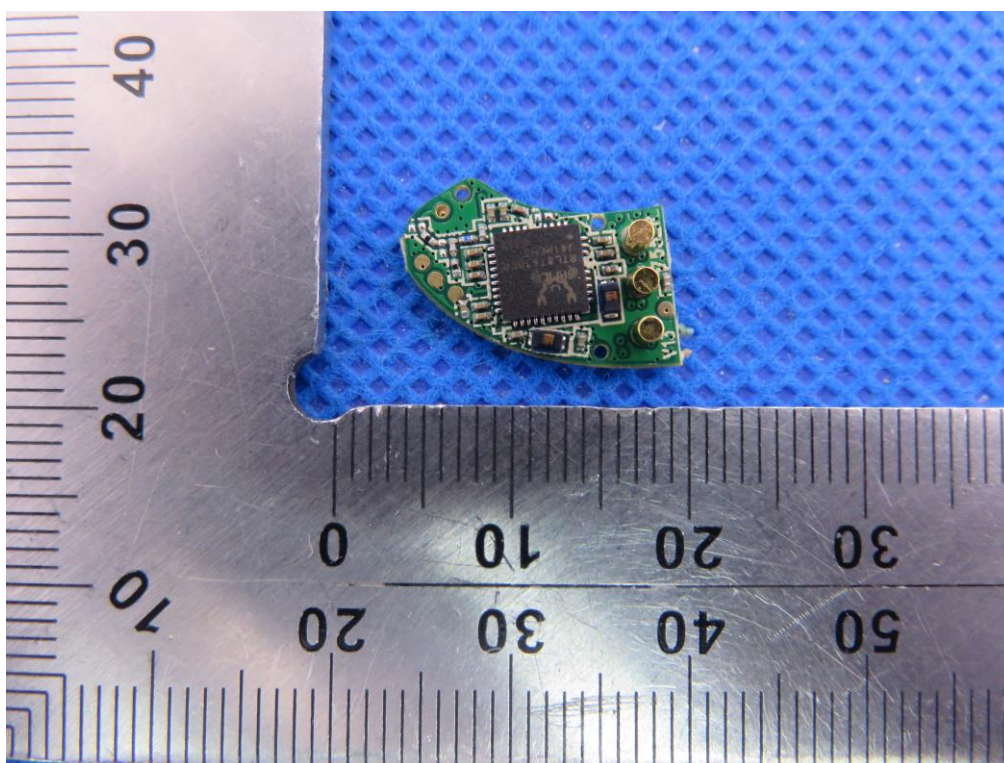


VIEW OF BATTERY-2

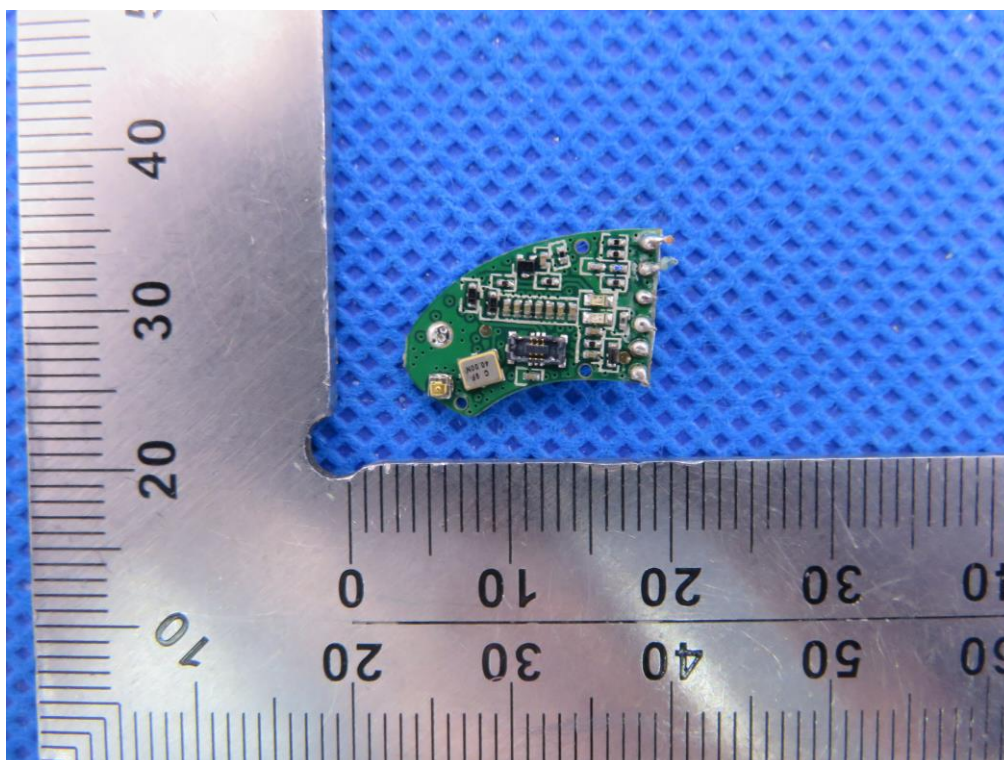


A photograph of a small, rectangular, black electronic component, likely a microcontroller or sensor module, placed on a blue textured surface. The component has a gold-colored pin header on one side. A ruler is visible in the background, showing measurements in centimeters and millimeters.

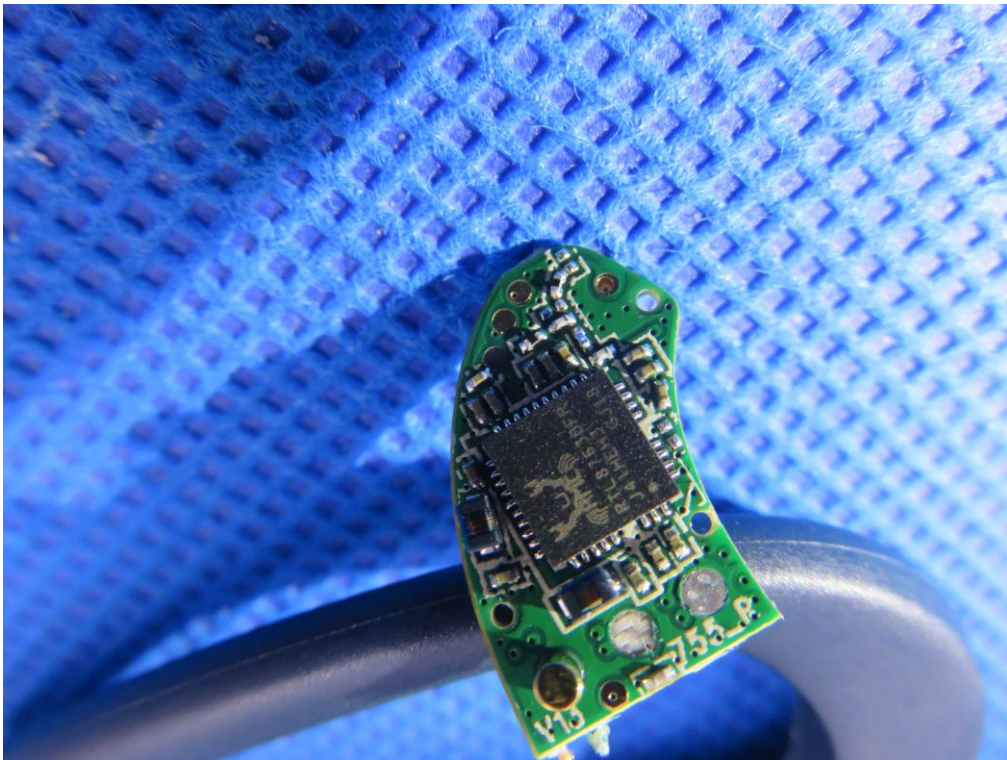
INTERNAL VIEW OF EUT-3



INTERNAL VIEW OF EUT-4



INTERNAL VIEW OF EUT-5



INTERNAL VIEW OF EUT-6

