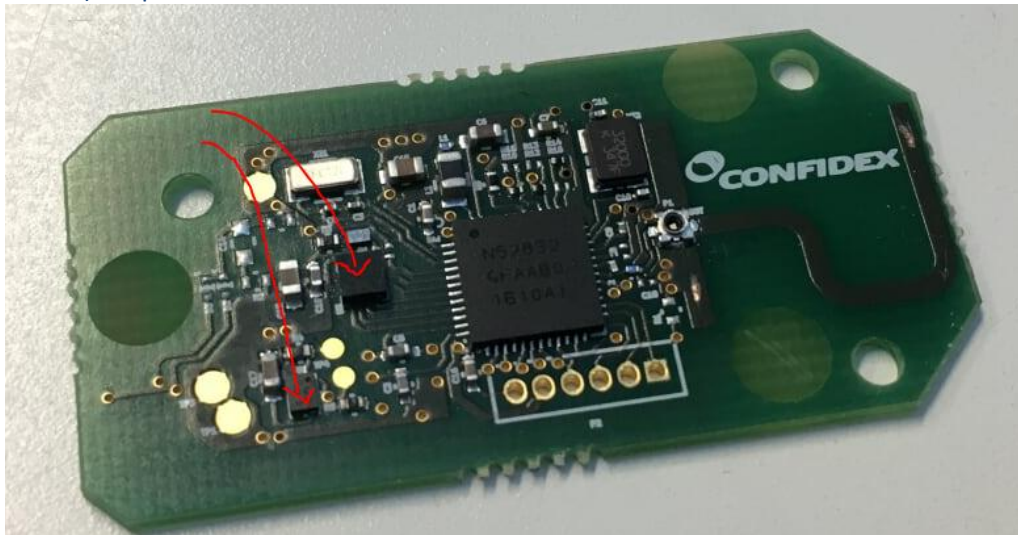
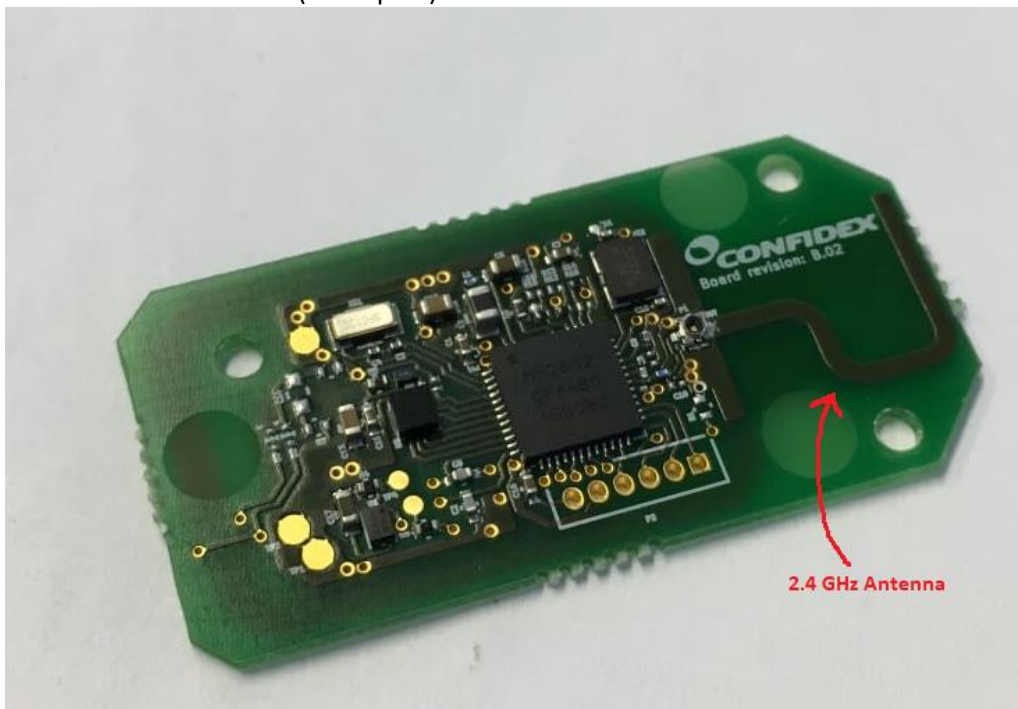


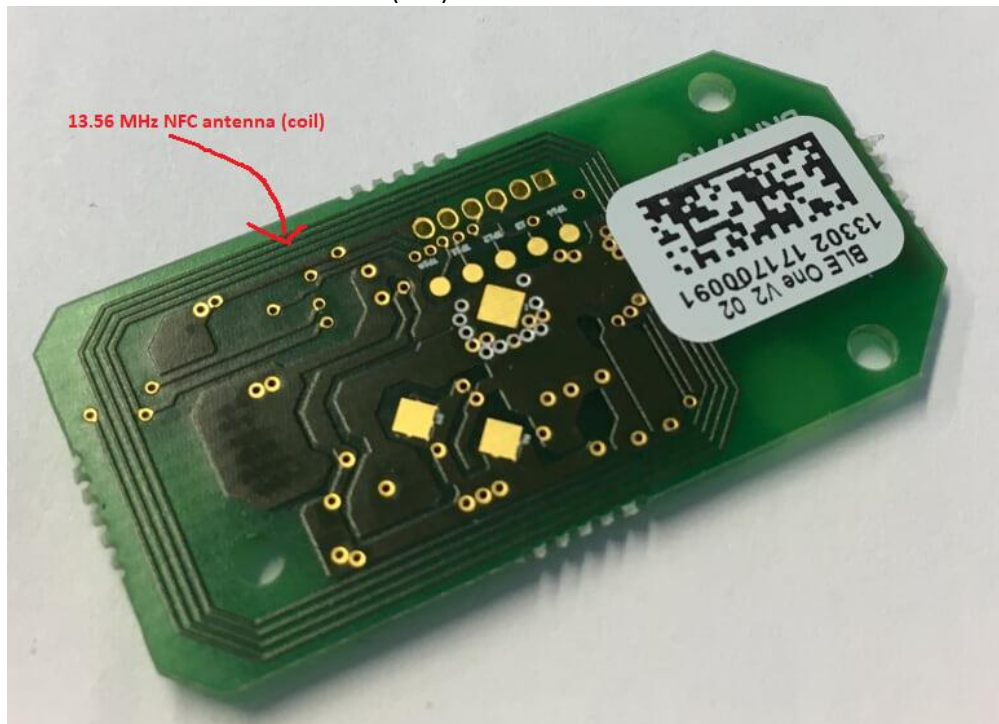
Below: Bigger component: STLS2DH-accelometer. The smaller component is magnetic switch (hall-sensor) – a passive sensor.



Below: 2.4 GHz antenna (monopole).



Below: 13.56 MHz NFC antenna (coil).



Below: Main board & Battery holder boards.



Below: Main board assembled to mechanics.



Below: Both boards assembled to mechanics.



Below: Back cover assembled.

