

For reMarkable products:

- Model RM02A reMarkable Paper Pro

reMarkable

User Guide

0.1 Power button

The power button is located on the top left corner of your reMarkable Paper Pro. It's used for powering on and off, as well as the sleep and wake functions.



How to use the power button:

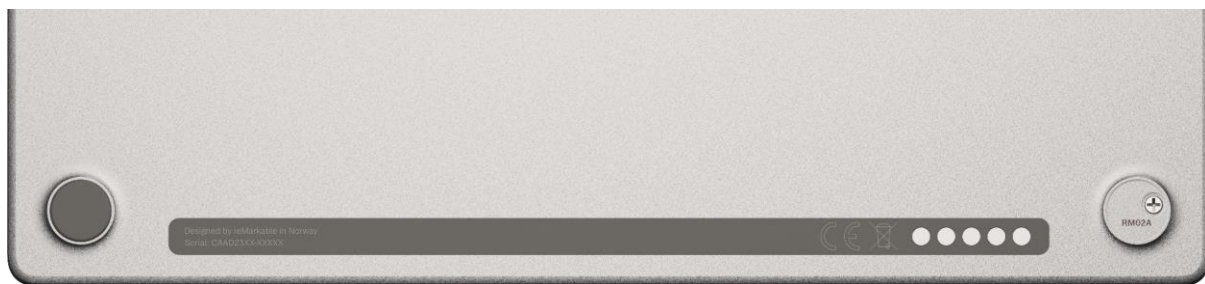
- Put the device in sleep mode with a short power button press. The “**reMarkable is sleeping**” message will appear on the screen.
- Wake the device from sleep with a short power button press.
- Turn off reMarkable Paper Pro with one of the following methods
 - a) pressing the power button for 3 seconds. You will then be asked whether you want to turn off the device or not.
 - b) pressing the power button for at least 10 seconds
- Turn on reMarkable Paper Pro by pressing in the power button for two seconds or until the backlight leds starts to blink
- Set the reMarkable Paper Pro into **factory reset mode*** by pressing the button for 25 seconds

**when the device is in factory reset mode you can use the reMarkable App or web interface to flash new software*

Read more about sleep and other power-saving modes in [battery settings](#).

0.2 model name location

The device model number can be located on the backside by removing the bottom right rubber feet.



1 Getting started

1.1 Setting up your reMarkable

Turn on your reMarkable and follow the setup assistant to guide you through the process.

The setup consists of a few simple steps that will get your reMarkable ready to go. The device arrives partially charged and doesn't need to be charged before setting up.

Warning: To avoid damage or injuries read [important safety and handling information](#) before using your reMarkable.

1.1.1 What you need to get started

What you need to get started:

- A reMarkable Paper Pro.
- USB-C cable and USB power adapter/brick.
- A smartphone or computer.
- Access to a wireless (Wi-Fi) network.

1.1.2 Starting up

Step by step:

1. Press and hold the power button to get started
2. Test your writing on the display





Connect to Wi-Fi

3. Choose an available Wi-Fi network. If necessary, enter a Wi-Fi password.



4. Type the password and tap **Enter**.



You can also connect to enterprise networks by entering the following:

EAP method: PEAP
Validate CA certificate: Off
Phase 2 authentication: MSCHAPV2
Enter identity: Type your username here
Enter anonymous identity: Leave this blank
Enter password: Type your password here
Be aware that these settings are all case-sensitive

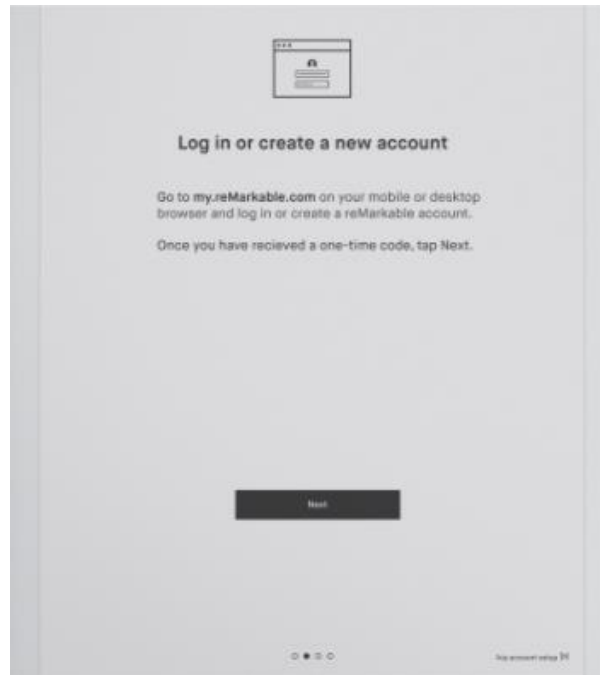
5. Tap **Enter** to connect to the Wi-Fi network. Success!



Note: You can choose to skip this step and connect to Wi-Fi from the **Settings** menu later. This is not recommended, as your reMarkable will not be connected to the reMarkable cloud and your files will not be synced and stored. Wi-Fi is also necessary to get the latest updates for your reMarkable.

1.1.3 Connect to your account

Connect your reMarkable to the reMarkable cloud to be able to seamlessly transfer documents and ebooks to your paper tablet. The reMarkable cloud also allows you to access your content from our mobile and desktop applications and functions as a backup for your notes if you lose your device.



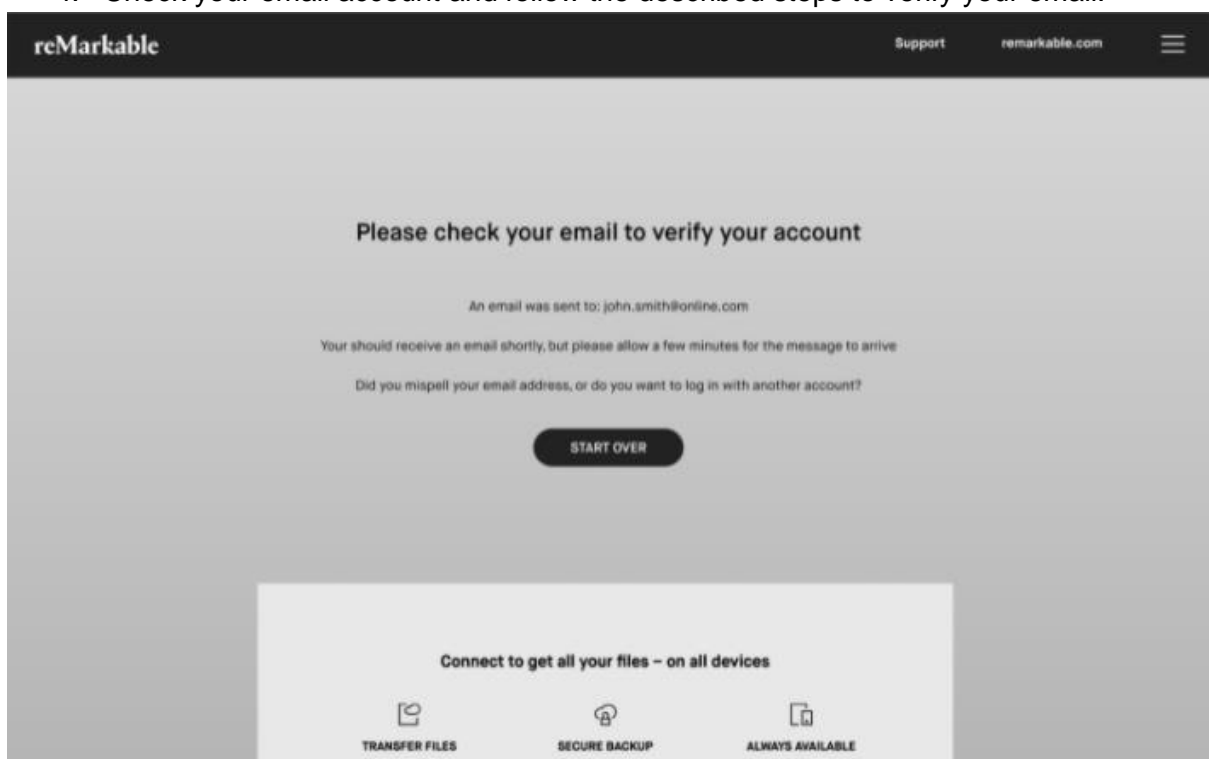
Log in to my.remarkable.com from a mobile or desktop device and create a reMarkable account in order to connect to the reMarkable cloud. Once logged in, tap **Get code** for your reMarkable device. Note that the one-time code is only valid for five minutes.

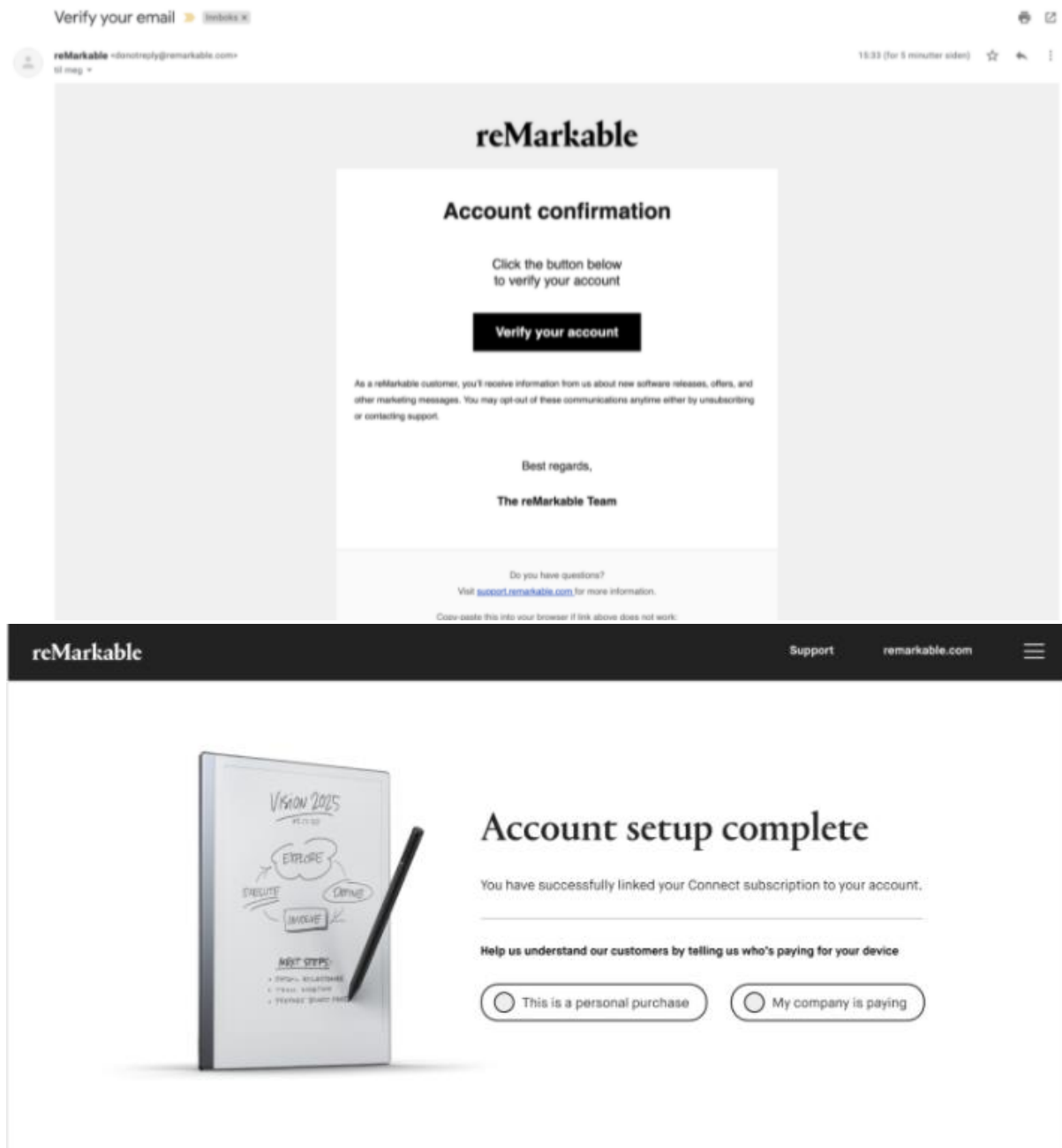
Create a reMarkable account

1. Go to my.remarkable.com
2. Click **Create new account**, enter your email address and choose a password.

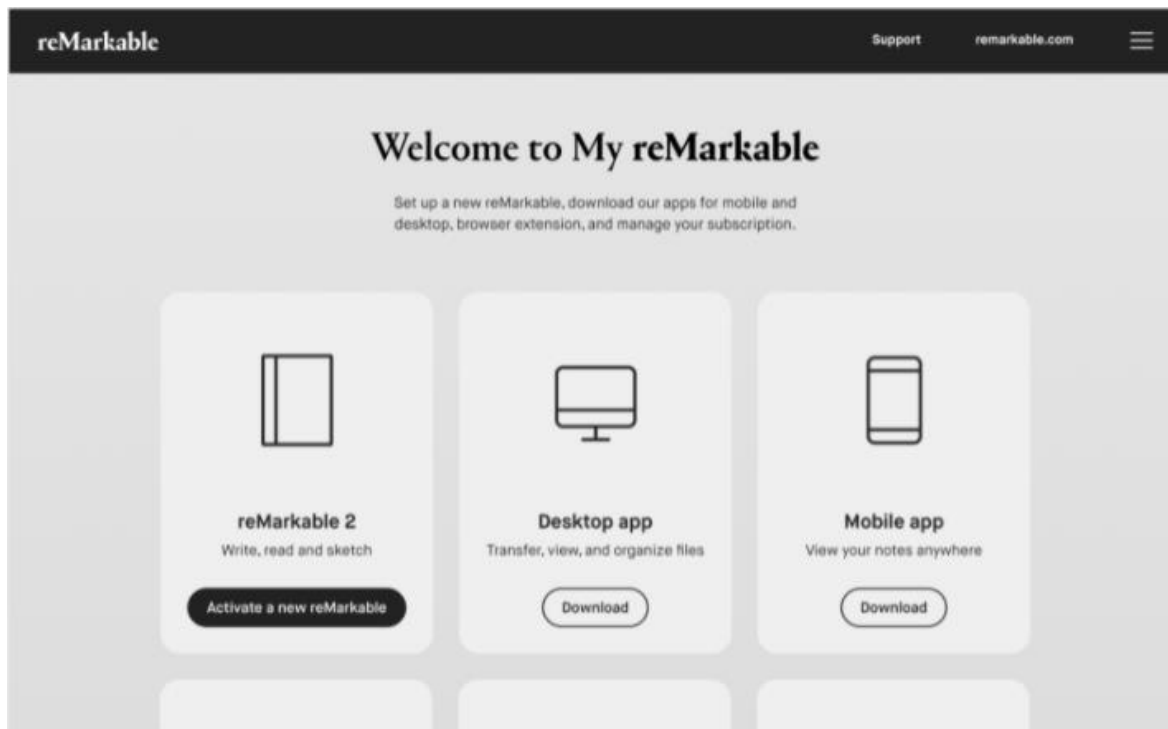


3. Click **Create account**. This will initiate an email verification process.
4. Check your email account and follow the described steps to verify your email.





5. Click on the drop-down menu in the top right corner and select **Home**. Click on **Activate a new reMarkable** to access the one-time code.



6. Enter the one-time code on your reMarkable Paper Pro, and tap **Enter**.



Success! You're connected. When connected, the device will be marked with a checkmark in your browser window at my.remarkable.com.

1.1.4 Handwriting conversion

Select the language for the **handwriting conversion** tool

< Cloud setup

What language do you write in?

Select a language so we can convert your notes into text.
You can always change this later in settings.

Handwriting conversion language

English - United states



Basque - Spain

Bulgarian - Bulgaria

Catalan - Spain

Chinese Traditional - Hong kong

Croatian - Croatia

Czech - Czech Republic

Danish - Denmark

Dutch - Belgium

Dutch - Netherland

English - Canada

English - Philippines

English - United Kingdom

English - United States

Estonian - Estonia

Finnish - Finland

French - Canada

French - France

Irish - Ireland

Galician - Spain

German - Austria

German - Germany

Greek - Greece

Hungarian - Hungary

Icelandic - Iceland

Italian - Italy

Latvian - Latvia

Lithuanian - Lithuania

Norwegian - Norway

Polish - Poland

Portuguese - Portugal

Romanian - Romania

Slovak - Slovakia

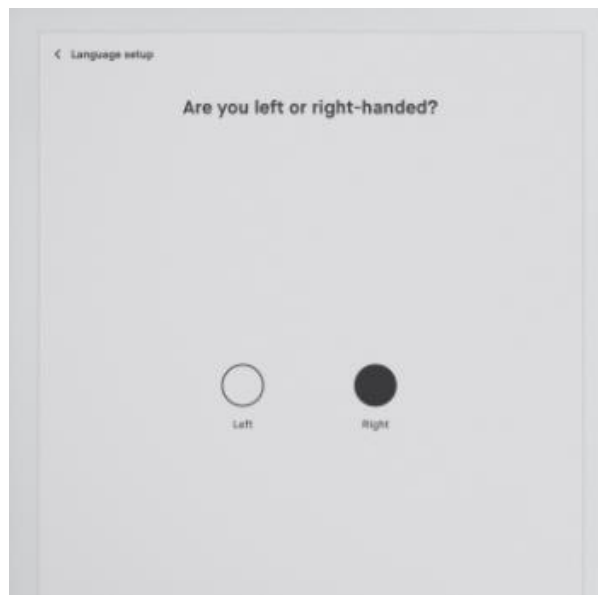
Slovenian - Slovenia

Spanish - Spain

Swedish - Sweden

1.1.5 Choose right-handed or left-handed mode

Choose between right-handed or left-handed mode. This can be changed later in **Accessibility Settings**.



After setting up, you will be guided through a tutorial. This tutorial is always available in **Help** under **Settings**. Check if there are any software updates waiting for you in **General settings**.



1.2 Charging your device

Use the USB-C cable from the reMarkable box to charge your reMarkable.

Plug the USB-C cable end to the USB-C charging port and the USB end to a USB power plug, or to your computer.

There are two ways of checking whether your reMarkable is charging when turned on:

- The **Battery indicator** on the home screen will change from a battery icon to a charging icon.
- **Power settings** in **Settings** will indicate that the charger is connected while the device is charging.



Battery Status



Battery charging

The device will flash white if it is turned off when it starts charging.

1.3 Updating to the latest version

It is critical to have the latest version for reMarkable to work as intended and for you to get the latest functionality. You find which software version you are running in **Device Settings**.

Read about reMarkable latest software updates on our blog or check out the [Release log](#) for a detailed list of released functionality.

1.3.1 How to check for the latest update

Your device is by default set to auto-update, which is recommended for you to always have the latest updates and the newest functionality.

Step-by-step instructions:

1. Look for a notification in the bottom corner of the home screen.
2. The notification will ask you to restart your device.
3. Restart your device to complete the installation.

1.3.2 How to set your reMarkable to auto-update

Step-by-step instructions:

1. Tap **Menu** in the top right corner.
2. Tap **Settings** in the sidebar menu.
3. Under **Software**, tap **Version**.
4. Here you'll be able to turn automatic updates on or off. Your device is set to auto-update by default.

1.3.3 How to update manually

Step-by-step instructions:

1. Tap **Menu** in the top right corner.
2. Tap **Settings** in the sidebar menu.
3. Under **Software**, tap **Version**.
4. Tap **Check for updates** to see if there are any new updates available.
5. Tap **Download version** to update to a new version.
6. When the download is finished, click **Restart device** to complete the update.

1.3.4 Updating the desktop app - Mac and Windows

When a new software update is available for the desktop app, you'll see a notification to update. You can also update the desktop app by going to my.remarkable.com and clicking Manage apps under Desktop app.

1.3.4 Updating the mobile app - iOS

If you've got auto-updates enabled on your iPhone, your app will be updated automatically.

How to turn on automatic updates:

1. Go to **Settings**.
2. Tap **App Store**.
3. Switch updates on.

How to update manually:

1. Open the **App Store**.
2. Tap your profile icon at the top of the screen.
3. Find reMarkable, and tap **Update**.

If the reMarkable app isn't listed, you have the latest version installed on your phone.

1.3.5 Updating the mobile app - Android

If auto-updates are enabled, your app will be updated automatically.

How to turn on automatic updates:

1. Open **Google Play Store**.
2. Tap your profile icon at the top of the screen.
3. Tap **Manage apps & device**.
4. Tap **Manage** and find reMarkable.
5. Tap the app, then open **Details** by tapping **More**.
6. Select **Enable auto update**.

You can also update the app manually in Google Play Store:

1. Open **Google Play Store**.
2. Tap your profile icon at the top of the screen.
3. Tap **Manage apps & device**.
4. Tap **Update**. If "Update" isn't an available option, you've got the latest version of the app installed.

2 Settings

2.1 Settings

Settings can be reached from the home screen by tapping Menu in the top left corner, then Settings at the bottom of the menu bar. On the settings page, you can update to the latest software, log into your reMarkable account, and more.

2.2 General settings

General settings enable you to update to the latest software and turn auto-update on or off. Here you can also find your account details and log in to your account to transfer files between your connected apps.

2.2.1 Flight mode

Some airlines are very strict when it comes to Flight mode, and it is not necessarily sufficient to show that Wi-Fi is turned off. Flight mode can be enabled or disabled under General settings. You'll see an icon on the home screen when flight mode is turned on.

2.2.2 Account

Connect your device to a reMarkable account to import files to your device via the reMarkable cloud.

If you didn't connect your device to your reMarkable account in the setup process, you can do this manually in account settings. Your reMarkable must be connected to Wi-Fi in order to connect.

How to connect your device to your account:

1. Create a new account or log in to an existing reMarkable account at my.remarkable.com.
2. Get a one-time code and enter it on your reMarkable.
3. You're now connected to the reMarkable cloud.

You can find a guide on setting up your reMarkable [here](#).

You can log out of your account at any time by tapping **Log out**.

Note that your account can only be connected to one device at the time

2.2.3 Factory reset

By doing a factory reset all your files and settings on your reMarkable will be erased. Performing a factory reset is an easy step-by-step process that can be found in **Account settings**.

If you log back in with a one time code, all the files that are synced to the cloud will be synchronized and made available again. After the factory reset is done, your reMarkable will start up with the setup and onboarding procedures.

Like with any other operating system, we cannot guarantee that files are erased permanently, since all files can be restored by using specialized tools.

2.2.4 Software

Under Software you'll find information about which software version that's installed on your device and download the latest version.

How to update to the latest version:

1. Under **Software**, tap **Version**.
2. Tap **Check for updates** to see if there are any new updates available.
3. Tap **Download version** to update to a new version.
4. When the download is finished, click **Restart device** to complete the update.

Your device is by default set to auto-update, which is recommended for you to always have the latest updates and the newest functionality. With auto-update enabled you'll get a notification on the home screen to restart the device when a new version has been downloaded. You can turn auto-update off by tapping the on/off switch.

2.3 Wi-Fi settings

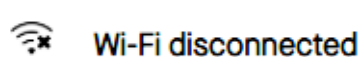
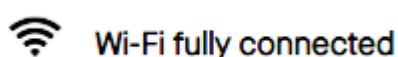
All available Wi-Fi networks will appear in Wi-Fi Settings. Switch Wi-Fi on/off in the top right corner.

How to connect to Wi-Fi

1. Connect to Wi-Fi by choosing the network you want to connect to, and enter a password if required. The lock icon indicates that a password is required to connect to the Wi-Fi network.
2. The device will say **Connecting to ---** when your device is connecting to the selected network.
3. When you are successfully connected a white dot will appear next to the Wi-Fi name, as well as the text **Connected to ---**. The signal strength is indicated by the icon next to the Wi-Fi name.

Your reMarkable will automatically reconnect to a known Wi-Fi network.

Please note that it's not possible to connect to Wi-Fi networks that require a browser window to open.



2.4 Battery settings

Battery settings allows you to enable or disable automatic sleep and automatic power off. Read more about the different power saving modes below.



Battery Status



Battery charging

2.4.1 Power saving modes

Light sleep

Light sleep allows you to see your content while preserving battery life. Your reMarkable will enter light sleep automatically after 20 minutes of inactivity.

- **Wake the device** from light sleep by pressing the home button or the prev/next buttons on the device
- Light sleep can't be activated manually.

Sleep

reMarkable uses a minimum amount of power when sleep mode is enabled. If automatic sleep is activated, your reMarkable will go into sleep after 2 hours, 40 minutes in light sleep or after 3 hours of inactivity. The device is not connected to Wi-Fi while in sleep mode.

- **Enter sleep mode** by pressing the power button once
- **Wake the device** by pressing the power button

2.4.2 Power off

- **Turn off** your reMarkable by holding down the power button and tapping Turn off
- **Enable or disable auto power off** in Power Settings. If automatic power off is enabled, your reMarkable will turn off after 12 hours of inactivity.

If both auto sleep and auto power off are disabled, your device will stay on until the battery is empty.

2.4.3 Battery percentage

Tap the **On/Off** button in the Power settings to display or hide the battery percentage.

2.5 Storage settings

Storage gives an overview of how much free space is left on your device. The reMarkable Paper Pro offers 64 GB of internal storage.

2.5.1 Device syncing

A cloud icon in the bottom toolbar indicates the status of the connection to the reMarkable cloud.

How to check the status of the connection to the cloud:

- Go to **Settings** and select **Storage**.
- Select **Check sync**.
- A status of the cloud connection will be displayed. In the case of sync issues, try restarting your device.

2.6 Security settings

Add extra security by enabling a passcode for your device. You'll be asked for your passcode when the device is turned on or woken from sleep mode. The passcode can only be reset from Security settings, but you have an unlimited number of trials to unlock your device.

After several failed password attempts, you'll get a lockout timer. The lockout timer will increase for every failed attempt. You're able to factory reset your device if you forget your passcode. If you try the wrong passcode too many times, you'll be able to reset your device by following the instructions on the device and visiting my.remarkable.com.

2.6.1 How to add a passcode

Step-by-step instructions:

1. Go to **Settings**.
2. Tap **Security** and toggle Passcode to **On**.
3. Enter the new passcode.
4. Verify the new passcode.

Note: If the passcodes don't match, you have to try again.

2.6.2 How to change or remove a passcode

Step-by-step instructions:

1. Go to **Settings** and tap **Security**
2. Tap on **Change passcode** or toggle Passcode to **Off**
3. Enter your old passcode

2.7 Language settings

Go to **language settings** to choose between keyboard languages and set the language for handwriting conversion. You can access language settings from the homepage by tapping **Menu** in the top left corner, **Settings** at the bottom of the sidebar, then **Language**.

Your reMarkable tablet has an onscreen keyboard that appears when you need to type in information. You can find your default keyboard in language settings.

2.7.1 Changing the keyboard language

- Tap the language currently displayed to change to another keyboard language.
- You can also change the keyboard language by tapping the language icon (🌐) in the onscreen keyboard.

2.7.2 Using the onscreen keyboard

- Tap the number key **123** to enter numbers or symbols.
- Tap the **(+≡)** key for additional symbols.
- Tap the letter key **abc** to return to the regular keyboard.
- Tap the shift key (**⇧**) to activate uppercase letters, and hold down shift to turn on caps lock.
- Long press on a letter to add accented characters.
- Change the keyboard language by tapping the language icon (🌐).

2.8 Accessibility settings

Accessibility settings enable you to switch between right- and left-handed mode, and alter the text size on your device.

AA Accessibility / Text Size / Settings

2.9 Help

Help is where you can find copyright, licensing, and compliance information. Here you can also find the option of replaying tutorials, and reactivating the introductory tooltips.

2.9.1 About

The **About** section contains general information about the reMarkable, copyright notices, the End User License Agreement (EULA), as well as information about licenses for different parts of the reMarkable software.

The GPLv3 Compliance section contains information about how to access the device via SSH, and the password needed to do so.

Note that any changes made to the reMarkable through SSH access is done at the users own risk.

You will also find the IP addresses available to connect to the reMarkable. In order to find the IP addresses, select the "Copyrights and licenses" tab. The IP addresses are found in the bottom right corner.

2.9.2 Tutorial

The **Tutorial** section of the settings menu contains two introductory tutorials. The **Getting started tour and tooltips** allow you to refresh your knowledge of essential tools and features on the reMarkable.

The tutorials can be reset as though you were using your device for the first time.

Tap **Getting started tour and tooltips** to repeat the onboarding and reset the tooltips.

3 Regulatory Compliance and Important Safety Information for model RM02A reMarkable Paper Pro

Regulatory Certification and Approval Marks for your paper tablet device can be found locally on your device in Settings, Help, Compliance statement.

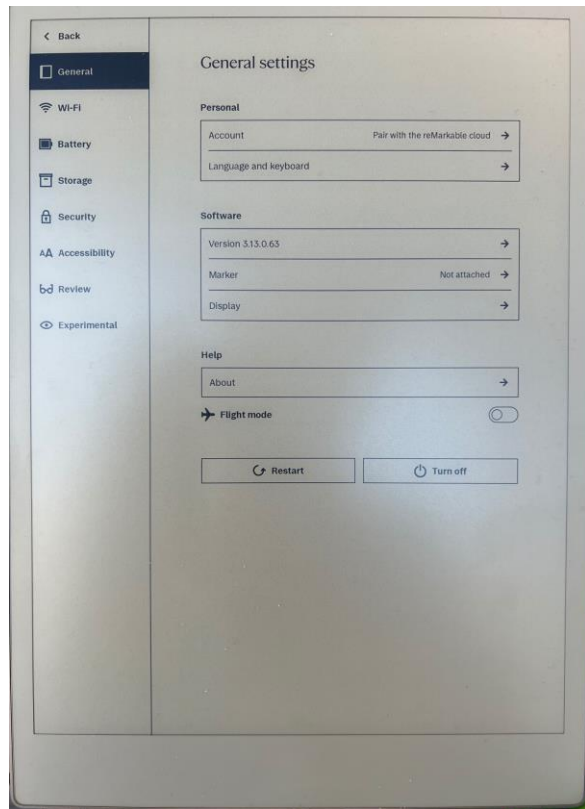
3.1 E-label

Follow these steps to find the E-label on the reMarkable Paper Pro:

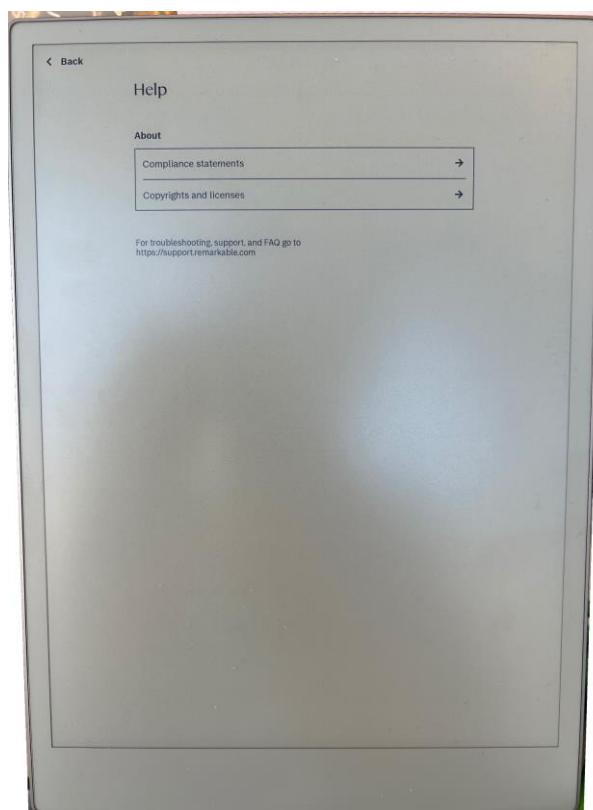
Step 0: Enter the device main/home menu



Step 1: Select **Settings** in the side menu.



Step 2: Select **Help(About)** in the menu.



Step 3: Select **Compliance statements** to display the E-label.



Regulatory Certification and Approval Marks can be viewed by scrolling down the page

3.2 Important safety and handling information

WARNING: Failure to follow these safety instructions could result in fire, electric shock, injury, or damage to the reMarkable Paper Pro or other property. *Read all the safety information below before using the device.*

3.2.1 Radio frequency energy exposure and interference

The reMarkable uses radio signals to connect to Wi-Fi. It is designed and manufactured not to exceed the exposure limits for radio frequency energy as set by the Federal Communications Commission of the United States (FCC). For more information read the FCC Compliance Statement or input your device's FCC ID into the FCC ID search form available at <https://www.fcc.gov/oet/ea/fccid>.

Although the reMarkable complies with the regulations governing RF emission, the energy exposure from the device may negatively affect the operation of other electronic equipment. To prevent possible interference or danger, Wi-Fi on the device should be turned off in areas where a wireless connection is forbidden, such as within an aircraft system. Be aware that RF signals could constitute a hazard in areas such as health care facilities or construction sites, and use of Wi-Fi may be restricted. The device should not be used or charged with potentially explosive atmospheres.

3.3 USA compliance statement (FCC)

Remarkable Paper Pro (Model RM02A) FCC ID: 2AMK2-RM02AA

This device complies with part 15 of the FCC Rules. Operation is subject to the following two conditions: (1) This device may not cause harmful interference, and (2) this device must accept any interference received, including interference that may cause undesired operation.

Changes or modifications not expressly approved by the party responsible for compliance could void the user's authority to operate the equipment.

This equipment has been tested and found to comply with the limits for a Class B digital device, pursuant to part 15 of the FCC Rules. These limits are designed to provide reasonable protection against harmful interference in a residential installation. This equipment generates, uses and can radiate radio frequency energy and, if not installed and used in accordance with the instructions, may cause harmful interference to radio communications. However, there is no guarantee that interference will not occur in a particular installation. If this equipment does cause harmful interference to radio or television reception, which can be determined by turning the equipment off and on, the user is encouraged to try to correct the interference by one or more of the following measures:

- Reorient or relocate the receiving antenna.
- Increase the separation between the equipment and receiver.
- Connect the equipment into an outlet on a circuit different from that to which the receiver is connected.
- Consult the dealer or an experienced radio/TV technician for help.

This equipment complies with FCC radiation exposure limits set forth for an uncontrolled environment. The End user must follow the specific operating instructions for satisfying RF exposure compliance. This transmitter must not be co-located or operating in conjunction with any other antenna or transmitter.

The device is designed to meet the requirements for exposure to radio waves established by the Federal Communications Commission (USA). These requirements set a SAR limit of 1.6 W/kg averaged over one gram of tissue. The highest SAR value reported under this standard during product certification for use when properly worn on the body is 1.07 W/kg.

8.4 Canada compliance statement (IC)

Remarkable Paper Pro (Model RM02A) IC: 22859-RM02AA

This device contains licence-exempt transmitter(s)/receiver(s) that comply with Innovation, Science and Economic Development Canada's license-exempt RSS(s). Operation is subject to the following two conditions: (1) This device may not cause interference. (2) This device

must accept any interference, including interference that may cause undesired operation of the device.

L'émetteur/récepteur exempt de licence contenu dans le présent appareil est conforme aux CNR d'Innovation, Sciences et Développement économique Canada applicables aux appareils radio exempts de licence. L'exploitation est autorisée aux deux conditions suivantes : 1) L'appareil ne doit pas produire de brouillage; 2) L'appareil doit accepter tout brouillage radioélectrique subi, même si le brouillage est susceptible d'en compromettre le fonctionnement.

The device for operation in the band 5150–5250 MHz is only for indoor use to reduce the potential for harmful interference to co-channel mobile satellite systems.

1. Les dispositifs fonctionnant dans la bande de 5150 à 5250 MHz sont réservés uniquement pour une utilisation à l'intérieur afin de réduire les risques de brouillage préjudiciable aux systèmes de satellites mobiles utilisant les mêmes canaux.

This equipment complies with Innovation, Science and Economic Development Canada's radiation exposure limits set forth for an uncontrolled environment. The End user must follow the specific operating instructions for satisfying RF exposure compliance. This transmitter must not be co-located or operating in conjunction with any other antenna or transmitter.

The device is designed to meet the requirements for exposure to radio waves established by the Innovation, Science and Economic Development Canada's. These requirements set a SAR limit of 1.6 W/kg averaged over one gram of tissue. The highest SAR value reported under this standard during product certification for use when properly worn on the body is 1.07 W/kg.

Ce matériel répond à l'innovation, science et développement économique Canada est l'exposition maximale fixée pour un autre environnement. L'utilisateur final doit suivre les instructions d'exploitation de l'exposition aux radiofréquences spécifiques pour satisfaire la conformité. Cet émetteur ne doit pas être situées ou opérant conjointement avec toute autre antenne ou l'émetteur.

Le dispositif est conçu pour répondre aux exigences de l'exposition aux ondes radio créée par la science et l'innovation, développement économique Canada. Ces exigences limite de sar de 1.6 W / kg en moyenne pour un gramme de tissu. La valeur de r - s en vertu de cette norme plus élevée au cours de la certification de produits déclarés pour une utilisation bien portés sur le corps est 1.07 W/kg.