



QUICK START GUIDE

用户手册

SLYPOD 

CONTENTS

EN.....	1
CH.....	7

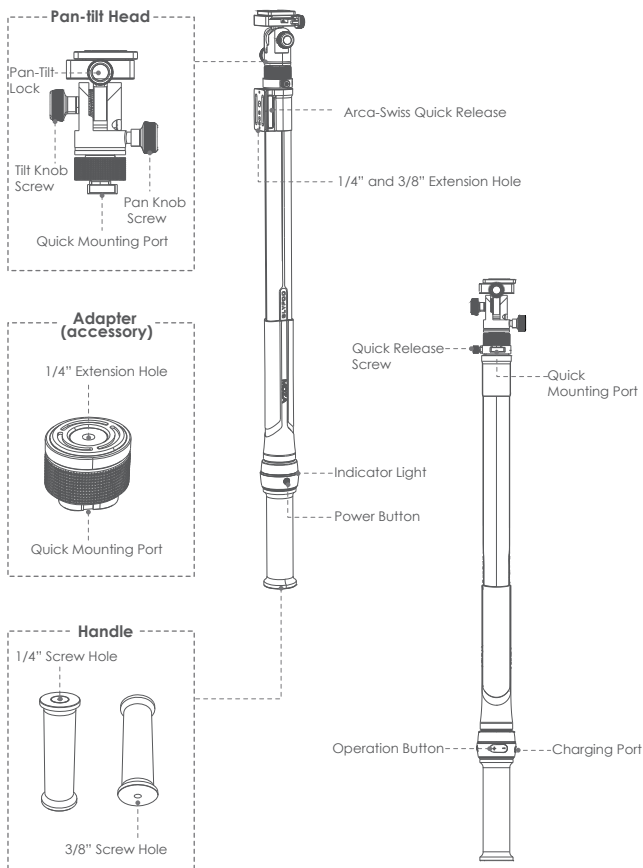
Battery and Charging

The MOZA Slypod comes with a built-in lithium battery. When charging for the first time, please fully charge the Slypod to activate the battery. Solid red indicates the Slypod is under charging, solid blue indicates the charging is completed. With a Type-C interface, the Slypod is able to be charged by a mobile phone charger or external power bank. It will automatically stop charging when the battery is full.

Note:

1. It's recommended to use the original charging cable provided in the package!
2. Do not overcharge or over-discharge the battery, otherwise the battery cell will be damaged.
3. If the battery is idle for a long time, please recharge and discharge it every 3 months to keep it active.

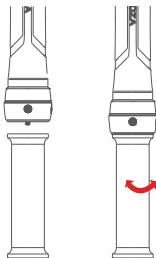
MOZA Slypod Overview



Mounting

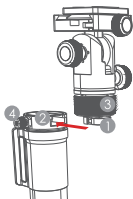
- **Mounting the handle**

Align the 1/4'' screw hole on the handle with the 1/4'' screw on the bottom of the pole, turn the handle clockwise to tighten it.

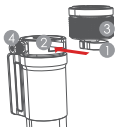


- **Mounting the pan-tilt head**

Slide the pan-tilt head into the groove at the top of the pole, make part 1 and part 2 fully fit. Turn the screw ring 3 clockwise to secure the head onto the pole. Loosen the screw ring 3, then turn the knob screw 4 anticlockwise to detach the head from the pole. After the P&T head is detached, reset the quick release knob.




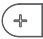

- **(Mounting the adaptor)** The same method as mounting the pan-tilt head.



Getting Started

Long press for 3 seconds: Power on/off

Button Functions

	Power Button 	Device State	Elongate+ 	Shorten- 
Short press	Photo taking control via the shutter cable	Static	Start to elongate	Start to shorten
	—	Elongate	Accelerate by one gear	Decelerate by one gear
	—	Shortened	Decelerate by one gear	Accelerate by one gear
	Short press power/+/- buttons(all three buttons) at the same time: Reset			
Long press	Power on	Static	Elongate and continue to accelerate	Shorten and continue to accelerate
	—	Elongate	Accelerate Continuously	Decelerate continuously to an shortened state
	—	Shortened	Accelerate continuously to an elongate state	Accelerate Continuously
	—	—	Long press +/- button at the same time: Automatic reciprocating mode(The blue light lasts for 1s indicate a mode switch.)	
Double Press	Stop	—	—	—
Triple Press	Turn Off + Reset (Blinking red)	—	—	—

App Download

Scan the QR code or search in the App Store to download the MOZA Master App.(Please find the QR code at the end of the Manual.)



iOS



Android

Device Connection (Wireless)

Download the "MOZA Master" App.

Turn on the phone Bluetooth and Sypod.

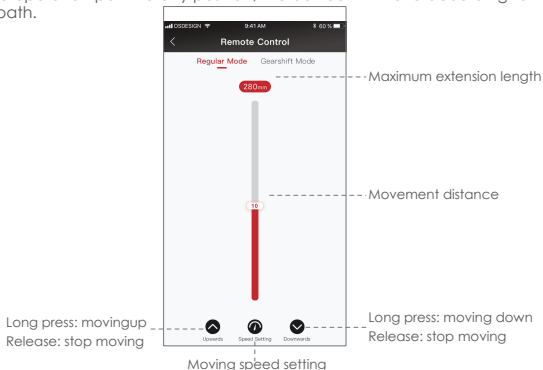
Launch the "MOZA Master", select the device to connect.

Enter the operation interface after connection is completed.

App Operation

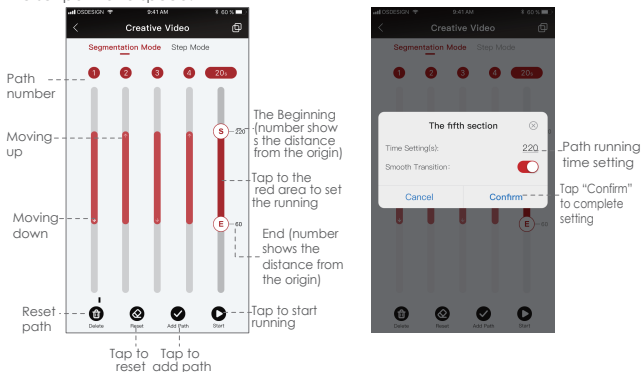
! Note: It's required to activate the device according to instructions before the first operation. please download the latest version. Updates are subject to change without notice. please note the major application stores

Slide the operation point to any position, the device will move according to the sliding path.



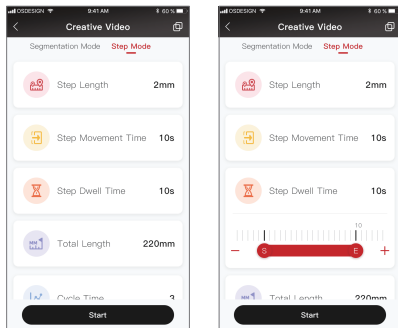
Segmentation Mode

Select the segmentation mode, add a path (Tap to add path, 5 paths can be added in maximum), and then slide the path bar to any location. Set the running time of each path separately. Tap to start and the device will move according to the set path and speed.



Step Time-lapse

Select step mode to set step length, cycle, residence time and step movement time. After the setting is completed, tap "Start" and the device will move according to the set step length, speed and cycle.



Firmware Upgrade

In the charging state, enter the APP interface after the device is connected to the APP, and select the Firmware Upgrade to perform the upgrading. The device must be restarted after the upgrade succeeds. If the upgrade fails, the process needs to be repeated until the upgrade succeeds.

Status Indicator

Charging	Solid red
Charging completed	Solid blue
Power on	Solid green
Under-voltage alarm	Solid orange
Low voltage alarm	Blinking red + automatic reset & shutdown (blinking red, unable to power on while pressing the power button)
Blinking green for 1s	Start/stop running switch
Blinking blue for 1s	Testing/operating modes switch

Charging

Uncover the rubber sleeve over the charging port, the Type-C interface is inside. The Sloyd can be charged by mobile phone charger, mobile power bank, etc. It will automatically stop charging when the battery is full, please disconnect the charger then. (It is recommended to use the original charging cable provided in the package)

Specifications

Slypod	
Size	Storage Length:522mm (grip not included)
	Expanded Length:971mm
	Max Diameter:54mm
Weight	Main Body: 745g
	PTZ Head: 287g
	Grip:278g
Payload	Vertical:9kg
	Horizontal:4Kg
Operating speed	Highest:28mm/s
	Lowest:0.15mm/s
Operating Voltage	8.5v - 12.6v
Battery Life	120min
Working Temperature	-10℃ - 50℃
Communication Interface	Bluetooth
	2.4G
	Type-C
Battery Model	Lithium ion Battery
Battery Capacity	600mA/h
Battery Voltage	11.1V
Charging Port	Type-C USB
Charging Voltage	5V
Charging Time	90min

FCC Warning:

Any Changes or modifications not expressly approved by the party responsible for compliance could void the user's authority to operate the equipment.

This device complies with part 15 of the FCC Rules. Operation is subject to the following two conditions: (1) This device may not cause harmful interference, and (2) this device must accept any interference received, including interference that may cause undesired operation.

Note: This equipment has been tested and found to comply with the limits for a Class B digital device, pursuant to part 15 of the FCC Rules. These limits are designed to provide reasonable protection against harmful interference in a residential installation. This equipment generates uses and can radiate radio frequency energy and, if not installed and used in accordance with the instructions, may cause harmful interference to radio communications. However, there is no guarantee that interference will not occur in a particular installation. If this equipment does cause harmful interference to radio or television reception, which can be determined by turning the equipment off and on, the user is encouraged to try to correct the interference by one or more of the following measures:

—Reorient or relocate the receiving antenna.

—Increase the separation between the equipment and receiver.

—Connect the equipment into an outlet on a circuit different from that to which the receiver is connected.

—Consult the dealer or an experienced radio/TV technician for help.

This equipment complies with FCC radiation exposure limits set forth for an uncontrolled environment.

电池及充电说明

Slypod使用内置锂电池，首次充电使用时，请先给Slypod充满电以激活电池，保证产品顺利使用。红灯常亮显示设备充电中，蓝灯常亮显示充电完成Slypod使用Type-C接口，手机充电器、移动电源等都可以给Slypod充电，电池充满后将停止充电。

- 1.使用Slypod过程中，请使用包装内提供的原装充电线！
- 2.切勿过充、过放电池，否则将对电芯造成损害；
- 3.若长期闲置电池，请每隔3个月左右重新充放电一次以保持电池活性。