

80mm

60mm

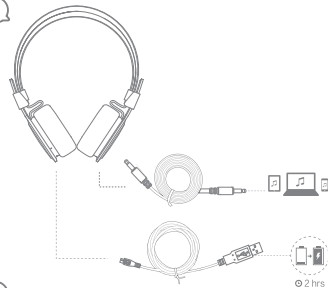
User Guide

Bluetooth Headset Z-BT3000



Quick Start Guide

1

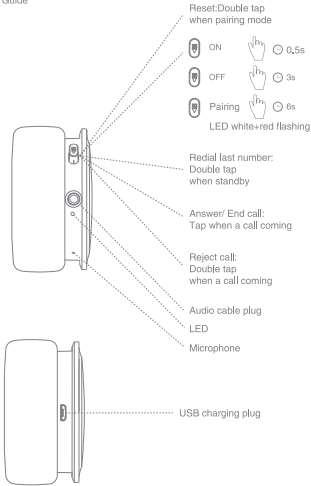


2



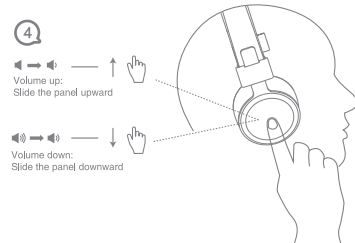
Quick Start Guide

3

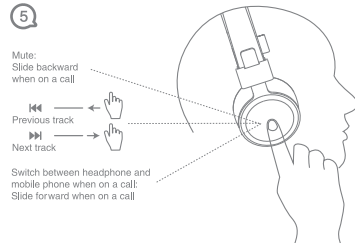


Quick Start Guide

4

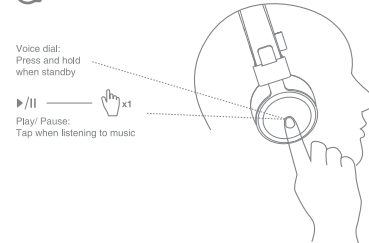


5



Quick Start Guide

6



Note: the headphone will power off automatically when BT pairing failed in 3mins, it couldn't off automatically when pause playing, please turn off the headphone when not in use.

Quick Start Guide

Warning

Excessive sound pressure from earphones and headphones can cause hearing loss.

Support

1.FAQ

Q: Why do I hear crackling noises?

A: Bluetooth is a radio technology that is sensitive to objects between the headset and the connected device. Ensure the headset and the connected device are within range (Up to 10m/ 33ft).

Q: What is the range of the headset?

A: The Z-BT3000 supports the following maximum ranges: 10m/ 33 ft.

Q: Why do I not hear anything?

A: You might need to increase the speaker volume, or ensure that the headset is connected to the device.

Q: I am having Bluetooth connection problems

A: Check your mobile device's Bluetooth menu and delete/ forget the headset. Re-connect the headset to your Bluetooth device following the Bluetooth connection instruction.

2.How to care for your headset

- Always store the headset with the power off and safely protected.
- Avoid storage at extreme temperatures (Above 65° C/ 149° F or below -10° C/ 14° F). This can shorten battery life and may affect the headset.

Quick Start Guide

TECHNICAL SPECIFICATIONS

Weight	125g
Dimensions	L 191 x W 156 x H 66 mm
Cable length	30cm
Microphone	4X1.5mm,Sensitivity:-38db+/-3dB
Microphone frequency	50HZ~15KHZ
Speaker	40mm dynamic speaker
Operation range	Up to 10m
Bluetooth version	4.1
Paired devices	Connected to two at the same time
Supported Bluetooth profiles	Hands free profile v1.6, headset profile v1.2, AVRCP v1.4, A2DP v1.2
Operate hours	About 18 hours (battery saturation)
Standby time	15 days
Pairing passkey or pin	0000

NOTE: This equipment has been tested and found to comply with the limits for a Class B digital device, pursuant to part 15 of the FCC Rules. These limits are designed to provide reasonable protection against harmful interference in a residential installation. This equipment generates uses and can radiate radio frequency energy and, if not installed and used in accordance with the instructions, may cause harmful interference to radio communications. However, there is no guarantee that interference will not occur in a particular installation. If this equipment does cause harmful interference to radio or television reception, which can be determined by turning the equipment off and on, the user is encouraged to try to correct the interference by one or more of the following measures:

- Reorient or relocate the receiving antenna.
- Increase the separation between the equipment and receiver.
- Connect the equipment into an outlet on a circuit different from that to which the receiver is connected.
- Consult the dealer or an experienced radio/TV technician for help

Changes or modifications not expressly approved by the party responsible for compliance could void the user's authority to operate the equipment.

This device complies with Part 15 of the FCC Rules. Operation is subject to the following two conditions:

- (1) this device may not cause harmful interference, and
- (2) this device must accept any interference received, including interference that may cause undesired operation.