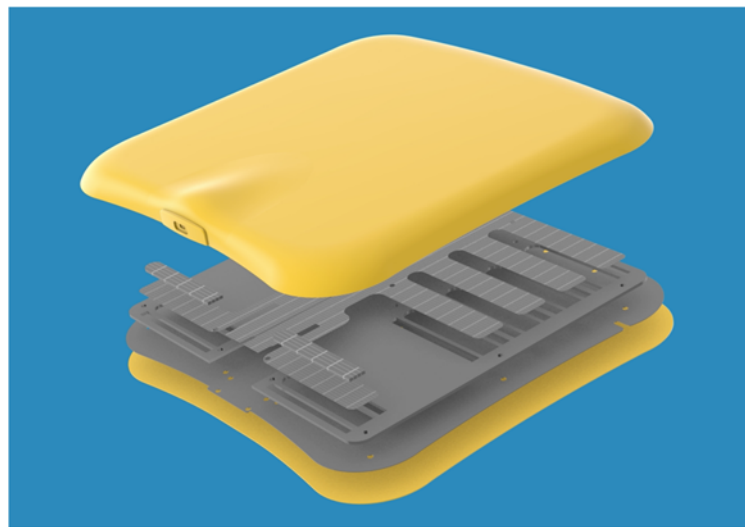


Smart Cushion

SeatLogger

Operational Instructions

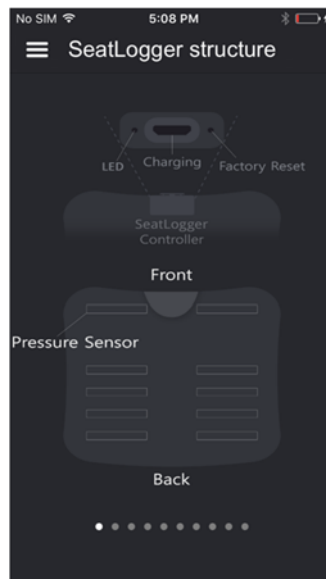


Ver 1.0

3L Labs Co., Ltd.

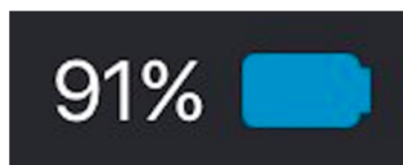
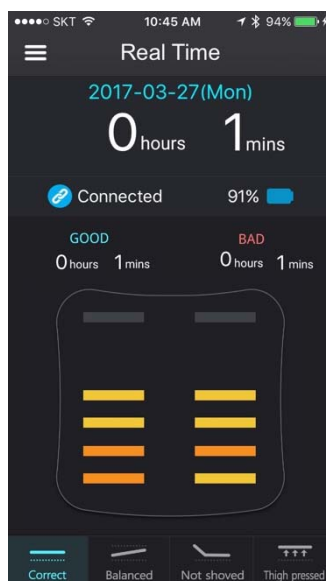
1. Starting the SeatLogger

- If you're using the SeatLogger for the first time OR if you haven't used it in a long time, you have to charge the device.
- How to Charge: Using the provided USB cable, connect the microUSB connector (in the front of the device) and the PC USB connector. You can also use smartphone chargers. Once charging starts the LED becomes red, and once charging is complete the LED becomes green.



Meaning	LED status
Stand by pairing	Red-Green blinking
Stand by connecting	Red every 5 seconds blinking
Connected	Green every 5 seconds blinking
Charging	Red On
Full charged	Green On
Factory Reset	Red-Green blinking fast 10 times

- You can check the remaining battery on the "Real Time" screen.



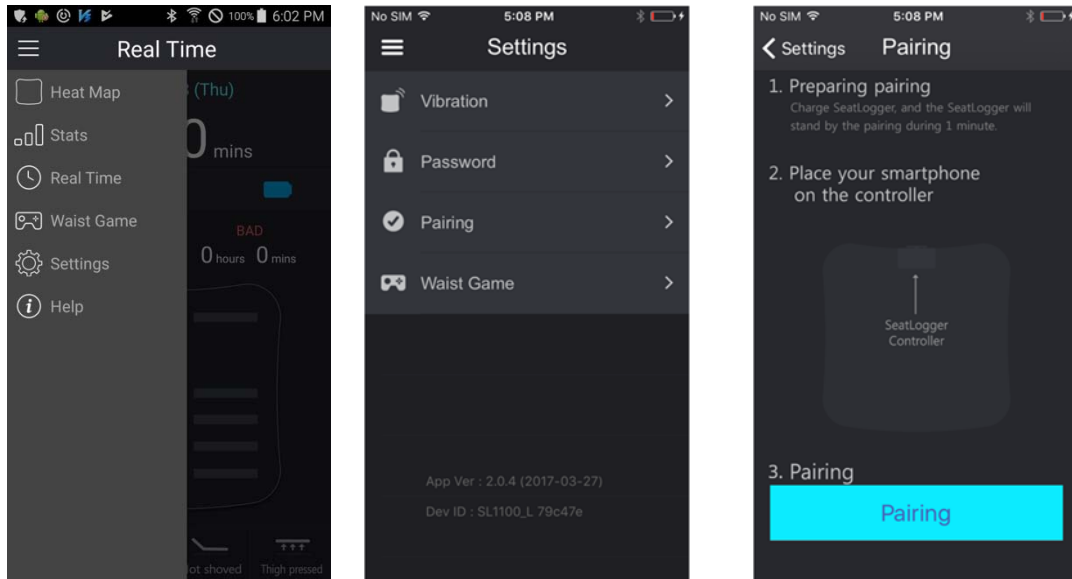
- Factory Reset
 - Purpose: Deleting saved data/password, resetting vibration settings.
 - ✧ Initial Vibration Setting: Incorrect posture, Sitting for more than an hour
 - Method: Press the FACTORY RESET softly with a hard wire (any thin object) until the red LED blinks (until it vibrates, takes approximately 5 seconds)
 - ✧ Once the reset starts all data is deleted: Red LED flashes for 10 seconds
 - ✧ Once reset is complete the device switches 'Stand by pairing': Red/Green LED flashes

2. Installing the App

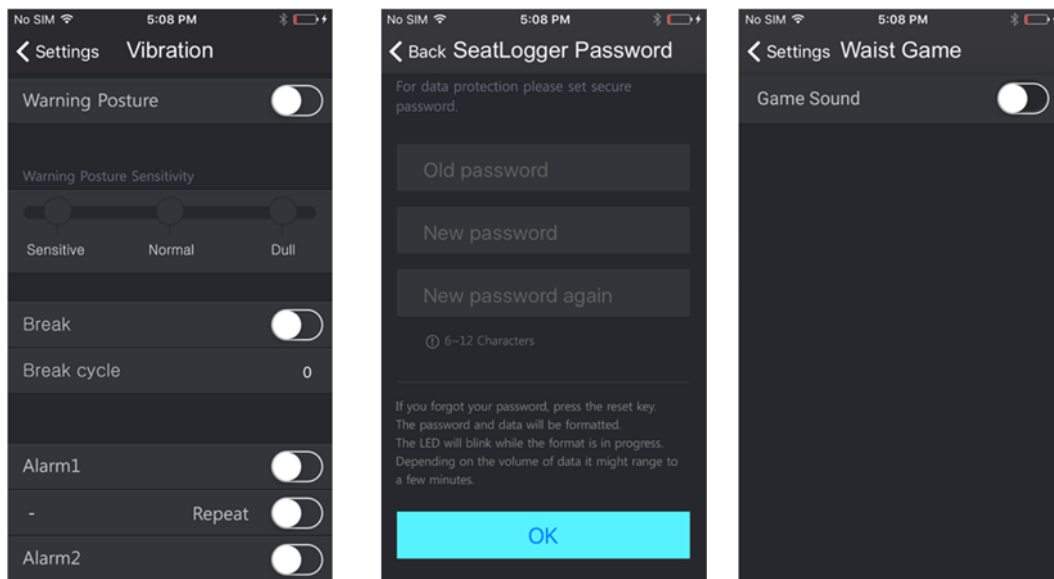
- Required: Android 6.0, iOS 8.0 and upwards
- Search 'seatlogger' at Google Play Store(Android), Apple App Store(iOS)

3. Pairing SeatLogger with App

- Charge and pull off charging cable from SeatLogger, than the Red-Green blinks for 1 minute.
- 'Main menu -> Settings -> Pairing'



4. Settings



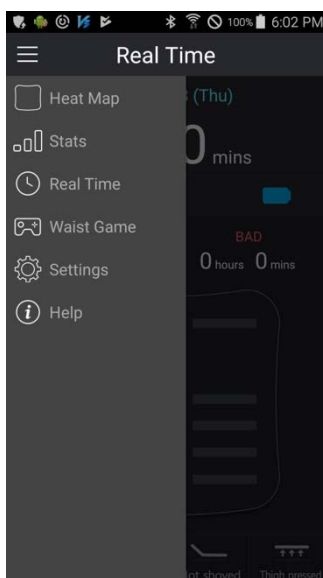
● Vibration Settings

- Warning Posture: Setting up whether or not to vibrate if your posture is sensed incorrect
 - ✧ Uneven Balance
 - ✧ Whether you're shoved up against the chair
 - ✧ Whether pressure is allocated to your thighs

- Break: Vibrate if you sit for too long over a certain range of time
 - Alarm: Set a time for vibration
 - For Break and Alarm, you have to be off the device for 10 seconds for the vibration to stop
- **SeatLogger password settings**
 - Restrict access to the data recorded in the device
 - If you press the Factory Reset button, the password is deleted along with the data
- **Waist Exercising Game**
 - Sound On/Off

5. Using the App

<Main Menu>



Heat Map: Shows your posture with a heat map

Stats: Weekly statistics, Sitting time, Sitting count, posture analysis

Real Time: You can observe your current sitting posture in real time

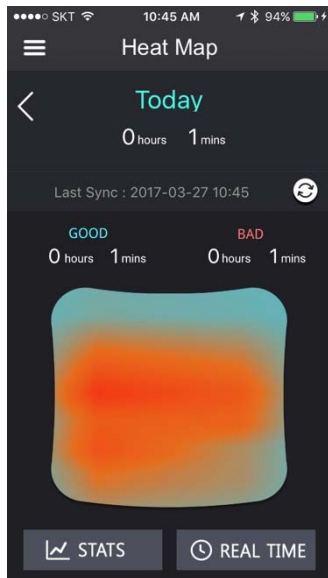
Waist (Exercise) Game: Drive a car with the SeatLogger!

Settings: Connect to the SeatLogger, Vibration settings, Password settings

Help: Explains how to sit properly

< Heat Map >

Shows today's sitting posture with a Heat map.



< > to move to another day

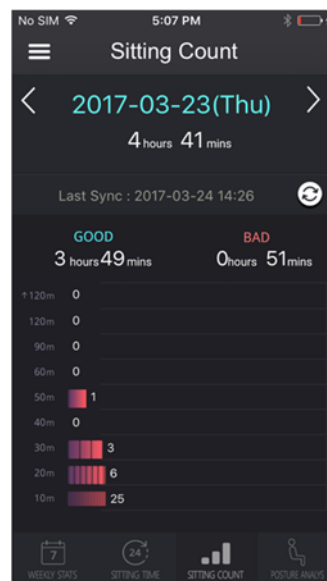
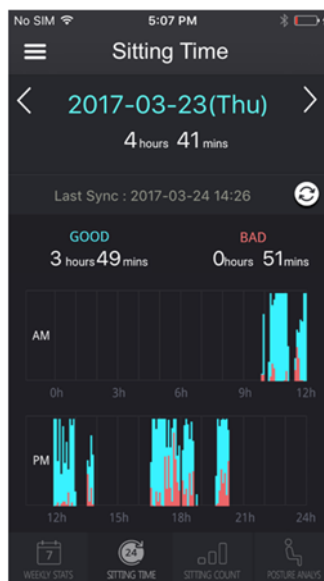
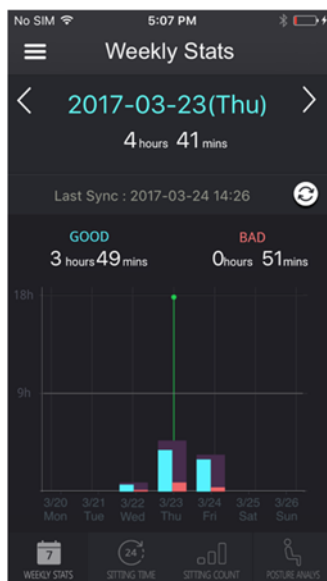
0 hours 1 Minutes: Today's sitting time

↻ Retrieve data from SeatLogger

GOOD/BAD: Time spent sitting properly/not properly

STATS: Weekly statistics, Sitting Time, Sitting Count, Posture Analysis

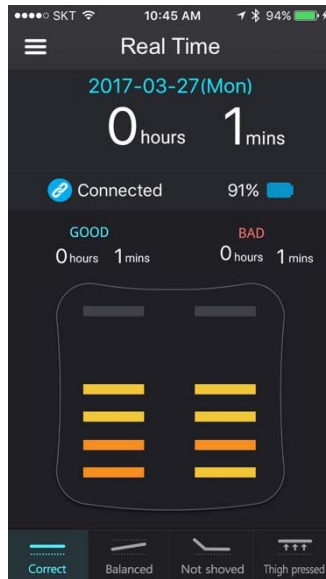
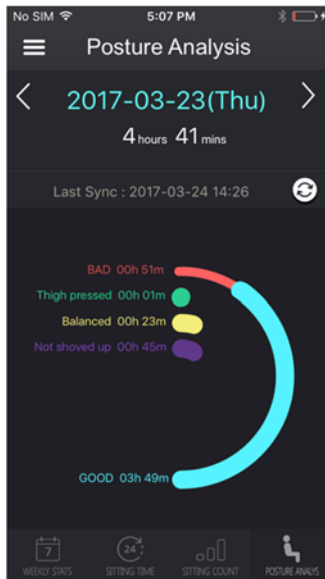
REAL TIME: You can observe your current sitting posture in real time



Weekly Stats: Observe a week's worth of data at once.

Sitting Time: Observe when you've been sitting down

Sitting Count: Observe how many you've sat and how long you've sat down at each time.



Posture Analysis: Analyze your posture by categorizing improper postures into three categories

Real Time: You can observe your current sitting posture in real time

Waist (Exercise) Game: Drive a car with the SeatLogger, using the device like a game controller

6. Specifications

- Size: Width 42cm, Length 41cm, Thickness ~ 2.8cm
- Cushion: Memory foam
- Pressure Sensor: Digital Pressure Sensors developed by 3L Labs
- Vibration motor installed
- Wireless communication with smartphone
- Data storage (sitting data saved)
- Battery: Lithium polymer rechargeable
- App: Android 6.0, iOS 8.0 and upwards

FCC Information to User

This equipment has been tested and found to comply with the limits for a Class B digital device, pursuant to Part 15 of the FCC Rules. These limits are designed to provide reasonable protection against harmful interference in a residential installation. This equipment generates, uses and can radiate radio frequency energy and, if not installed and used in accordance with the instructions, may cause harmful interference to radio communications. However, there is no guarantee that interference will not occur in a particular installation. If this equipment does cause harmful interference to radio or television reception, which can be determined by turning the equipment off and on, the user is encouraged to try to correct the interference by one of the following measures:

- Reorient or relocate the receiving antenna.
- Increase the separation between the equipment and receiver.
- Connect the equipment into an outlet on a circuit different from that to which the receiver is connected.
- Consult the dealer or an experienced radio/TV technician for help.

Caution

Modifications not expressly approved by the party responsible for compliance could void the user's authority to operate the equipment.

FCC Compliance Information : This device complies with Part 15 of the FCC Rules. Operation is subject to the following two conditions: (1) This device may not cause harmful interference, and (2) this device must accept any interference received, including interference that may cause undesired operation

CAUTION

To reduce the risk of electric shock, do not remove the top cover (or the rear section).
No user serviceable parts inside, refer servicing to qualified personnel.



This symbol, wherever it appears, alerts you to the presence of uninsulated dangerous voltage inside the enclosure-voltage that may be sufficient to constitute a risk of shock.



This symbol, wherever it appears, alerts you to the important operating and maintenance instructions in the accompanying literature. Please read the manual.

- 1) Read these instructions.
- 2) Keep these instructions.
- 3) Heed all warnings.
- 4) Follow all instructions.
- 5) Do not use this equipment near water.
- 6) Do not using near any heat sources such as radiators, heat resisters, stove, or other equipment that produce heat.

CAUTION
RISK OF EXPLOSION IF BATTERY IS REPLACED
BY AN INCORRECT TYPE.
DISPOSE OF USED BATTERIES ACCORDING
TO THE INSTRUCTIONS

3L Labs Co.,Ltd
1108, 60-44, Gasan-dong, Geumcheon-gu, Seoul, Korea
Tel: +82-70-8878-5088
Fax: +82-31-455-2066
URL: <http://footlogger.com>