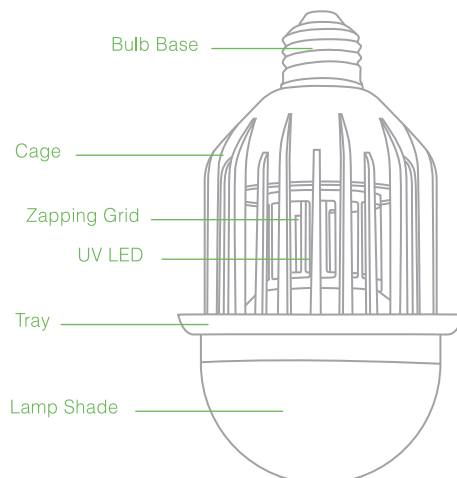
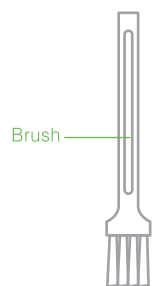


## Smart WiFi Zapper Bulb User Manual



### Specification

Model: IM040201  
Bulb Base: E26  
Voltage: 120VAC  
Frequency: 60Hz  
Grid voltage: 600V  
Power: 8W  
Color temperature of main light: 5200K  
Colors: RGB  
Lumen: max 600Lm  
Wireless communication protocol: IEEE802.11.b/g/n 2.4G  
Working temperature: -10°C~50°C

### Warning

1. Turn off the power before installation.
2. Do not use it with dimmable switch.
3. Do not touch the zapping grid when it's in use. This device contains high-voltage, electrical grids.
4. Do not put anything in the metal grids as this can cause an electric shock.
5. Do not submerge bulb in water or other liquids. Do not use where expose directly to the rain.
6. Unscrew bulb from the Socket before cleaning.
7. Keep the bug zapper away from children's and pets' reach.
8. Please use this product together with tray.
9. Do not try to disassemble this product.
10. Do not use the bug zapper in confined space.

### Features



Mosquito  
Control



Remote Control



Set Timer



Party Mode



Zap  
counting



Color  
Temperatures  
Adjustable



Smooth  
Dimming



Shake To  
Change Color

### Getting Strated:

1. Screw it to a regular E26 socket to realize the following functions:
2. Search and download the 'iMagic smart' App via App store or Google play.
3. Create the iMagic account through iMagic App and login, Click "+" and choose the smart zapper bulb to add the smart zapper bulb.
4. Follow the pairing steps within App to configure the zapper bulb.

### Restore to factory default

turn on and off for 5 times in succession( turn off for 1-2 seconds and then turn on for 1-2 seconds). Bulb flashes soft blue slowly indicates it was restored to factory default and ready to configuration.

### Need Help?

For technical documents and more  
Please visit [imagicliving.com](http://imagicliving.com)  
Tel: 1- 866-201-3421  
Email: [support@imagicliving.com](mailto:support@imagicliving.com)

### DISPOSAL

Dispose in accordance with your local regulations for electrical products.

### One Year Limited Warranty

EVERY PRODUCT INCLUDES ONE YEAR WARRANTY.

iMagic warrants your electronic zapper bulb to be free from defects in materials or workmanship under normal use and service for one year from date of original purchase. All parts except for burned out bulbs, which are defective, will be repaired free of charge. Any implied warranties, including the implied warranty of merchantability are also limited in duration to the one year period from the original purchase date.

The provisions of this warranty shall not apply to any iMagic zapper bulb which has been subject to misuse, neglect or accident, nor which is used for a purpose for which it is not designed, or which shall have been repaired or altered in any way so as to adversely affect its performance and reliability. Service by unauthorized parties voids your warranty. Warranty covers only the original purchaser. Commercial and/or professional use is excluded from warranty coverage.

iMagic neither assumes nor authorizes any person to assume for it any other liability in connection with its product. No responsibility is assumed for any consequential damages that may result from the use of a iMagic product, nor for damages due to accident, abuse, lack of responsible care, the affixing of any unauthorized attachment, loss of parts or subjecting this unit to any but the specified voltage.

If the unit fails to operate during the warranty period, send the product, along with purchase receipt showing purchase date and description of the problem to: iMagic Service Center, 15 Highland Avenue, Malden, MA 02148. Transportation costs for returning any defective product are the responsibility of the consumer.

This warranty gives you specific legal rights, and you may also have other rights which vary from state to state.

### FCC Statement

Any Changes or modifications not expressly approved by the party responsible for compliance could void the user's authority to operate the equipment.

This device complies with part 15 of the FCC Rules. Operation is subject to the following two conditions:

- (1) This device may not cause harmful interference, and
- (2) This device must accept any interference received, including interference that may cause undesired operation.

### FCC Radiation Exposure Statement:

This equipment complies with FCC radiation exposure limits set forth for an uncontrolled environment. This equipment should be installed and operated with minimum distance 20cm between the radiator & your body.

### ISED RSS Warning/ISED RF Exposure Statement

ISED RSS Warning: This device complies with Innovation, Science and Economic Development Canada licence exempt RSS standard(s). Operation is subject to the following two conditions: (1) this device may not cause interference, and (2) this device must accept any interference, including interference that may cause undesired operation of the device.

Le présent appareil est conforme aux CNR d'ISED applicables aux appareils radio exempts de licence. L'exploitation est autorisée aux deux conditions suivantes: (1) l'appareil ne doit pas produire de brouillage, et (2) l'utilisateur de l'appareil doit accepter tout brouillage radioélectrique subi, même si le brouillage est susceptible d'en compromettre le fonctionnement.

### ISED RF exposure statement:

This equipment complies with ISED radiation exposure limits set forth for an uncontrolled environment. This equipment should be installed and operated with minimum distance 20cm between the radiator & your body. This transmitter must not be colocated or operating in conjunction with any other antenna or transmitter.

Le rayonnement de la classe b respecte ISED fixaient un environnement non contrôlés. Installation et mise en œuvre de ce matériel devrait avec échangeur distance minimale entre 20 cm ton corps. Lanceurs ou ne peuvent pas coexister cette antenne ou capteurs avec d'autres.