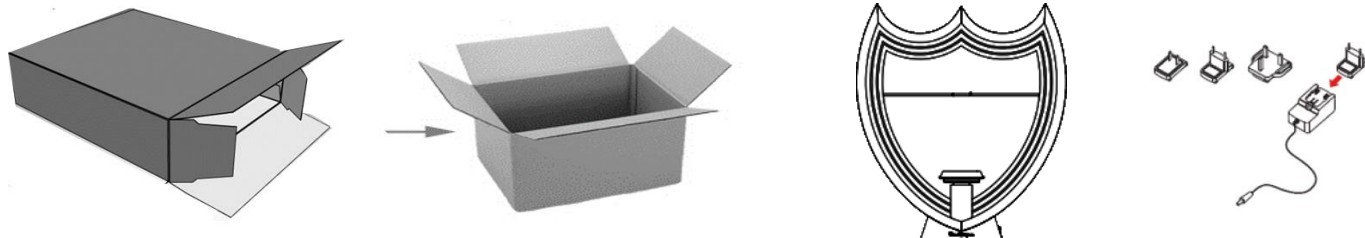


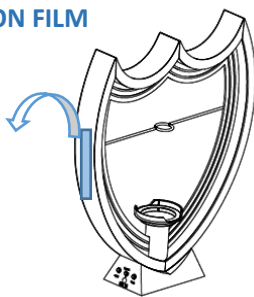
This item has been conceived strictly for the use of service and promotion of the DOM PÉRIGNON champagne brand.

## CONTENTS



## USAGE

### 1/ REMOVE THE PROTECTION FILM AND THE WARNING LABEL

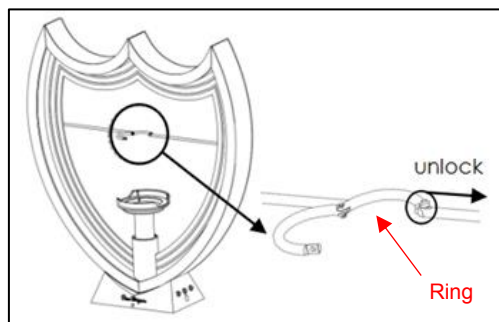


Please, only write “personalized messages “ that do not infringe any rights or laws, do not promote excessive drinking, and cannot be considered as offensive. Dom Pérignon is not responsible for the “personalized messages”

### 2/ BOTTLE INSERTION

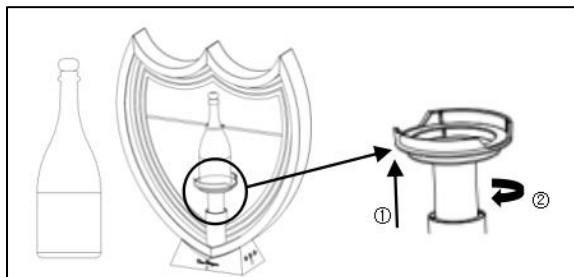
This unit is able to use with both **bottle 75 cL and Magnum 150 cl**

- Unlock the ring by sliding the button to the right, to insert the neck of the bottle



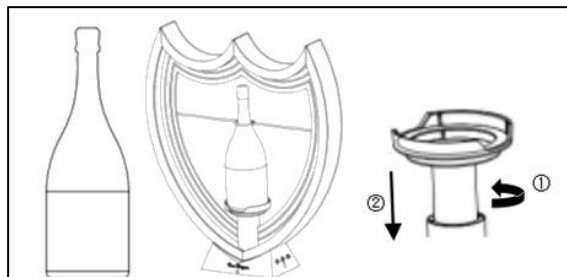
- Adjust the base adaptor

#### A – 75cl bottle size



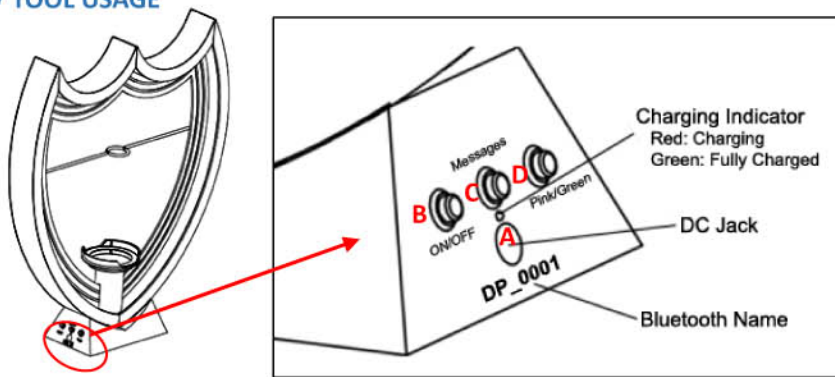
- Pull the adapter up to top most position, then turn the adapter clockwise until a “click” sound
- Place the bottle on adapter and make sure the bottle neck is inside the ring. Then close the ring.

#### B – 150 cl Magnum size



- Turn the adapter “anti-clockwise”, then push the adapter down to its lowest position.
- Place the bottle on adapter and make sure the bottle neck is inside the ring. Then close the ring.

### 3/ TOOL USAGE



- A. To charge
- B. ON/OFF
- C. Select preprogrammed message

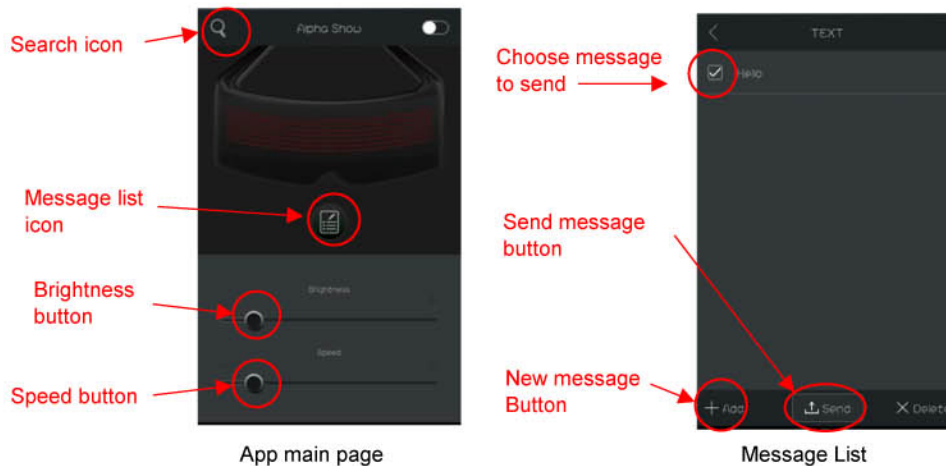
#### Messages

- ① ENTER YOUR MESSAGE (Personalized message)
- ② DOM PERIGNON
- ③ HAPPY BIRTHDAY
- ④ HAPPY NEW YEAR
- ⑤ CONGRATULATIONS
- ⑥ DRINKING STARS
- ⑦ VINTAGE ONLY

- D. Change color: Green / Pink

### 4/ PERSONALIZE MESSAGE BY BLUETOOTH

- Download and install mobile apps by scan the QR code
- Switch on the Bluetooth on your mobile
- Open the app
- Tap on the "search icon" and select the Bluetooth name of the unit you want to connect (located on the base)
- Code 012345
- To access the list of messages, click on "Message list icon"
- To write a new message, click on "Add", the new message button
- Select your message and click on "send" to send it to the item



### WARNING


- (1) Do NOT wet the product. It contains electric parts that may be damaged in case of contact with water
- (2) Use a soft dry cloth for cleaning
- (3) Do NOT use any detergents
- (4) Indoor used only
- (5) Do NOT tilt more than 15 degrees
- (6) The light source of this luminaire is not replaceable; when the light source reaches its end of life the whole luminaire shall be replaced
- (7) Check the good condition of the adaptor before using it


Warning: Changes or modifications to this unit not expressly approved by the party responsible for compliance could void the user's authority to operate the equipment.

NOTE: This equipment has been tested and found to comply with the limits for a Class B digital device, pursuant to Part 15 of the FCC Rules. These limits are designed to provide reasonable protection against harmful interference in a residential installation. This equipment generates uses and can radiate radio frequency energy and, if not installed and used in accordance with the instructions, may cause harmful interference to radio communications.

However, there is no guarantee that interference will not occur in a particular installation. If this equipment does cause harmful interference to radio or television reception, which can be determined by turning the equipment off and on, the user is encouraged to try to correct the interference by one or more of the following measures:

- ☐ Reorient or relocate the receiving antenna.
- ☐ Increase the separation between the equipment and receiver.
- ☐ Connect the equipment into an outlet on a circuit different from that to which the receiver is connected.
- ☐ Consult the dealer or an experienced radio/TV technician for help.

 Batteries / rechargeable batteries must not be disposed of in household waste. Every consumer is required by the Act to dispose of batteries in accordance with the collection points provided for in its common.

 Electrical and electronic equipment subjects to selective collection. Do not dispose of waste electrical and electronic equipment with the unsorted municipal waste but arrange to their curbside.

 Class 3 device

