



Hybrid

The first connected watch
by Festina & Soprod

Contents

00	Introduction	04
01	The Watch	05
02	The Features	09
03	The Application	13
04	Quick Start	17
05	Usability & Security	21
06	Certifications	25
07	Warranty	29

Festina Hybrid

Festina joins the new technologies and presents its first connected watch together with Soprod.

This company, which belongs to the Festina Group, is responsible for the creation of this new «**Festina Technology**» included in this new hybrid watch, which looks like a regular sporty accessory.

01 — The Watch

The Watch



FS3001/1



FS3001/2



FS3001/3



FS3001/4

Description

Product Name : 915.03B

Black plastic case

Plastic glass

Case diameter: 47 mm

5 ATM (50 meters)

60 days of autonomy

Bluetooth low energy

Weight: 70 gr



Extra Features

- USB cable
- Induction charger base (full charge in only 3 hours)

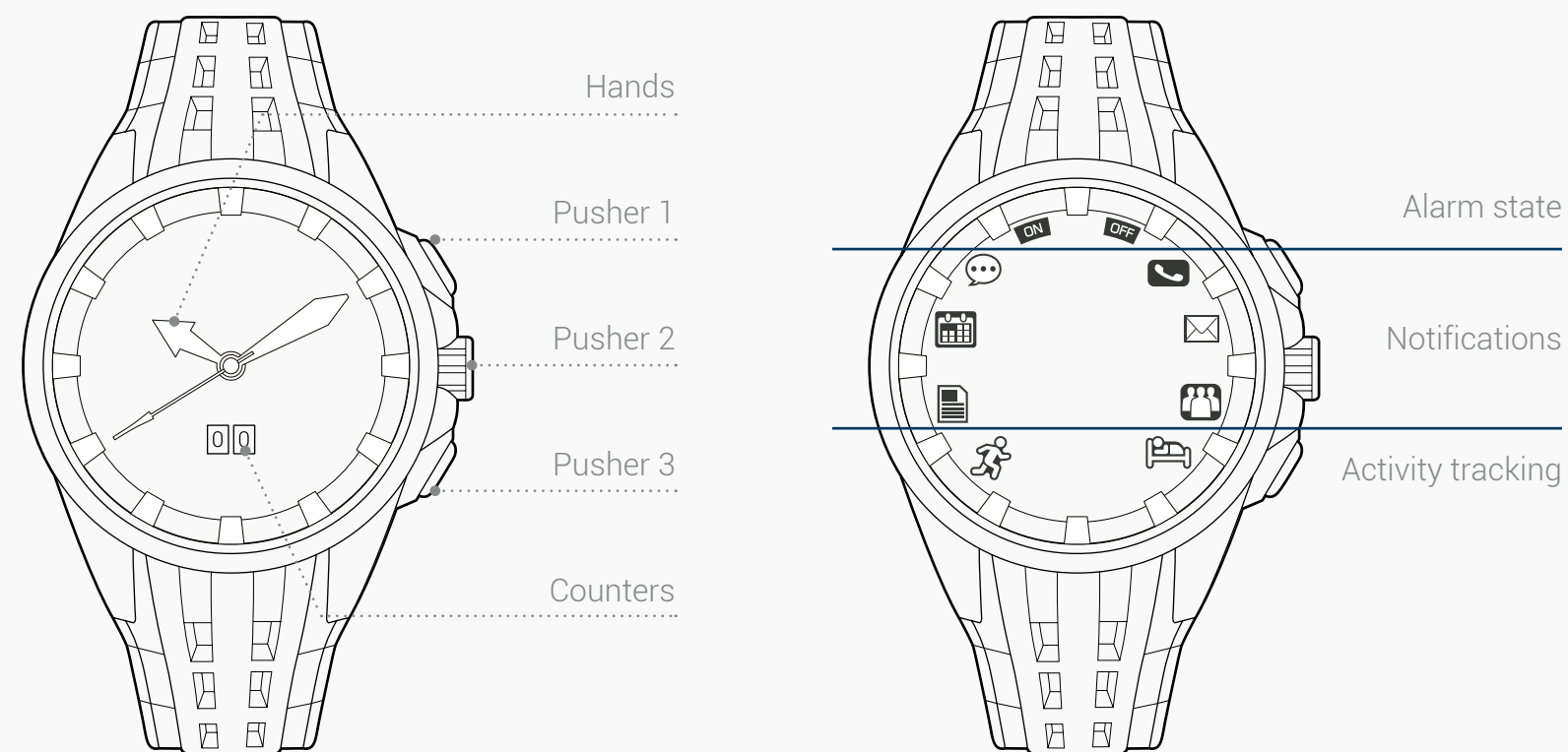


02— The Features

The Features

Apart from dialing the time, it has several functions that are connected to the user's mobile:

- Receive notifications (advise options)
- Sleep monitoring (sleep option)
- Activity tracking (sport option)



The Features



Functions Description



Notifications



Automatic Time
Zones



Activity
Tracking



Goal Tracking



Chronometer



Wireless
Synchronisation



Alarm



Second Time Zone



Sleep Monitoring



Customizable
Functions



Wireless
Charging



Date



Week Number



Timer



Laptimer



Interval timer

03— The Application

The App

The Festina technology application is **very easy** to use and so **intuitive**.

The App is available on:



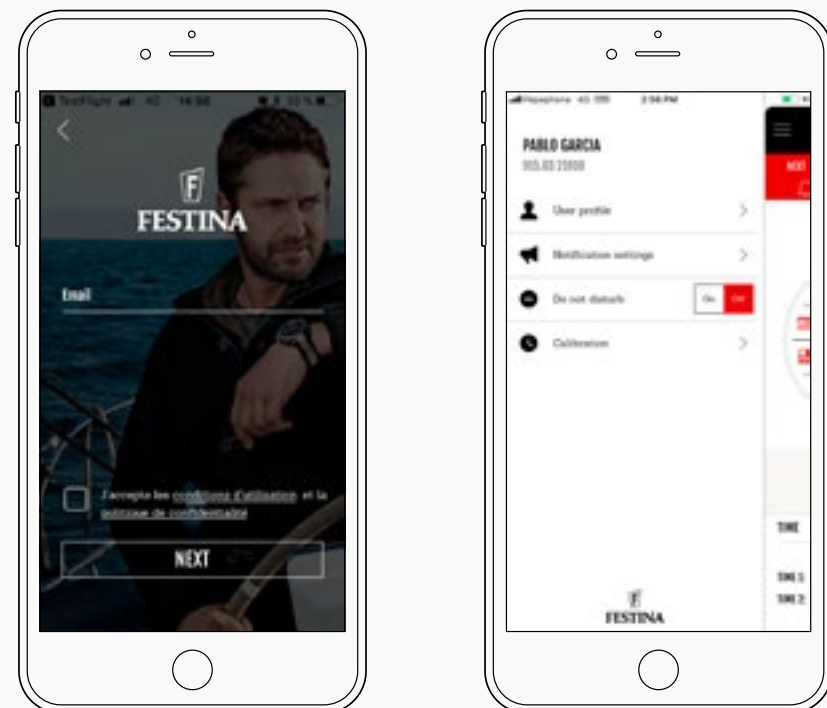
IOS

Version IOS 11+

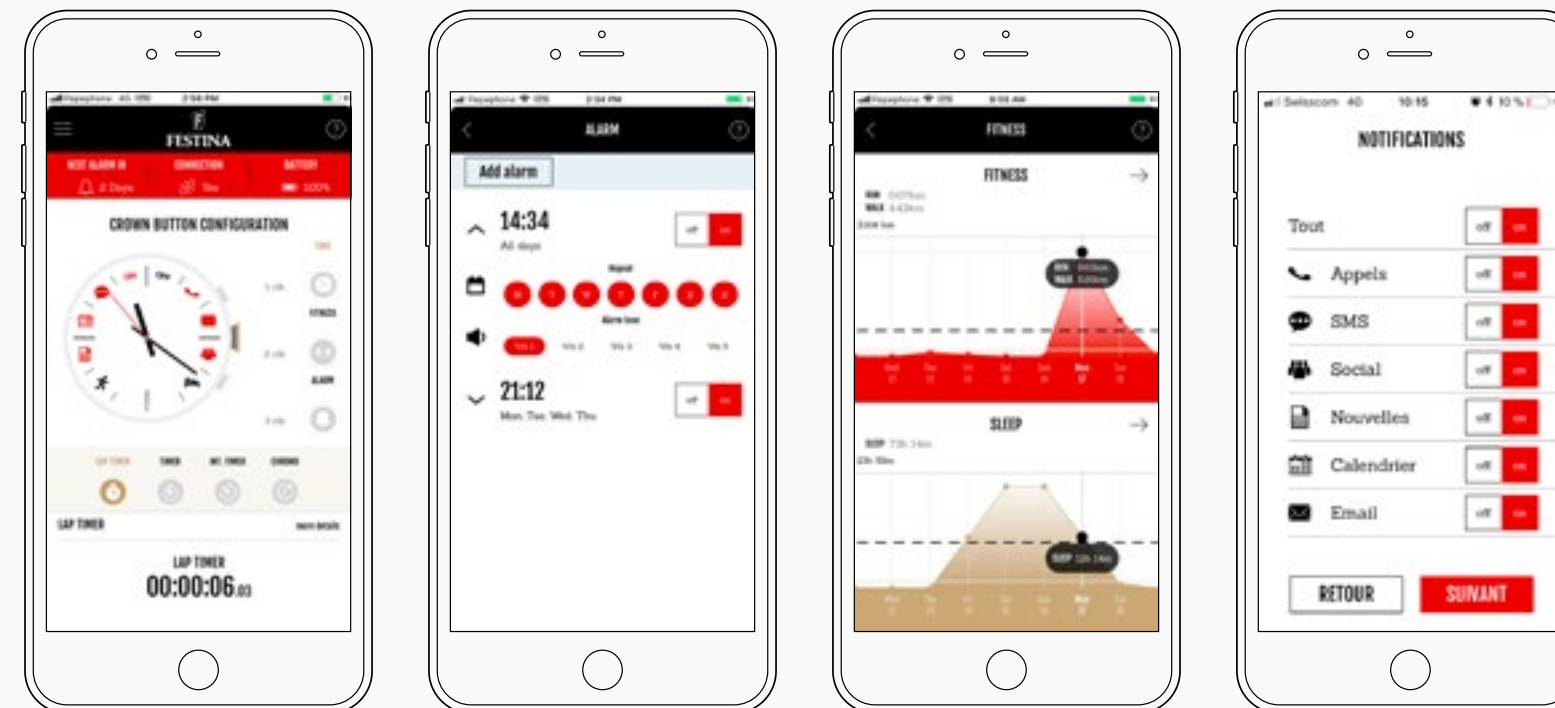


Android

Version Android 5.0+

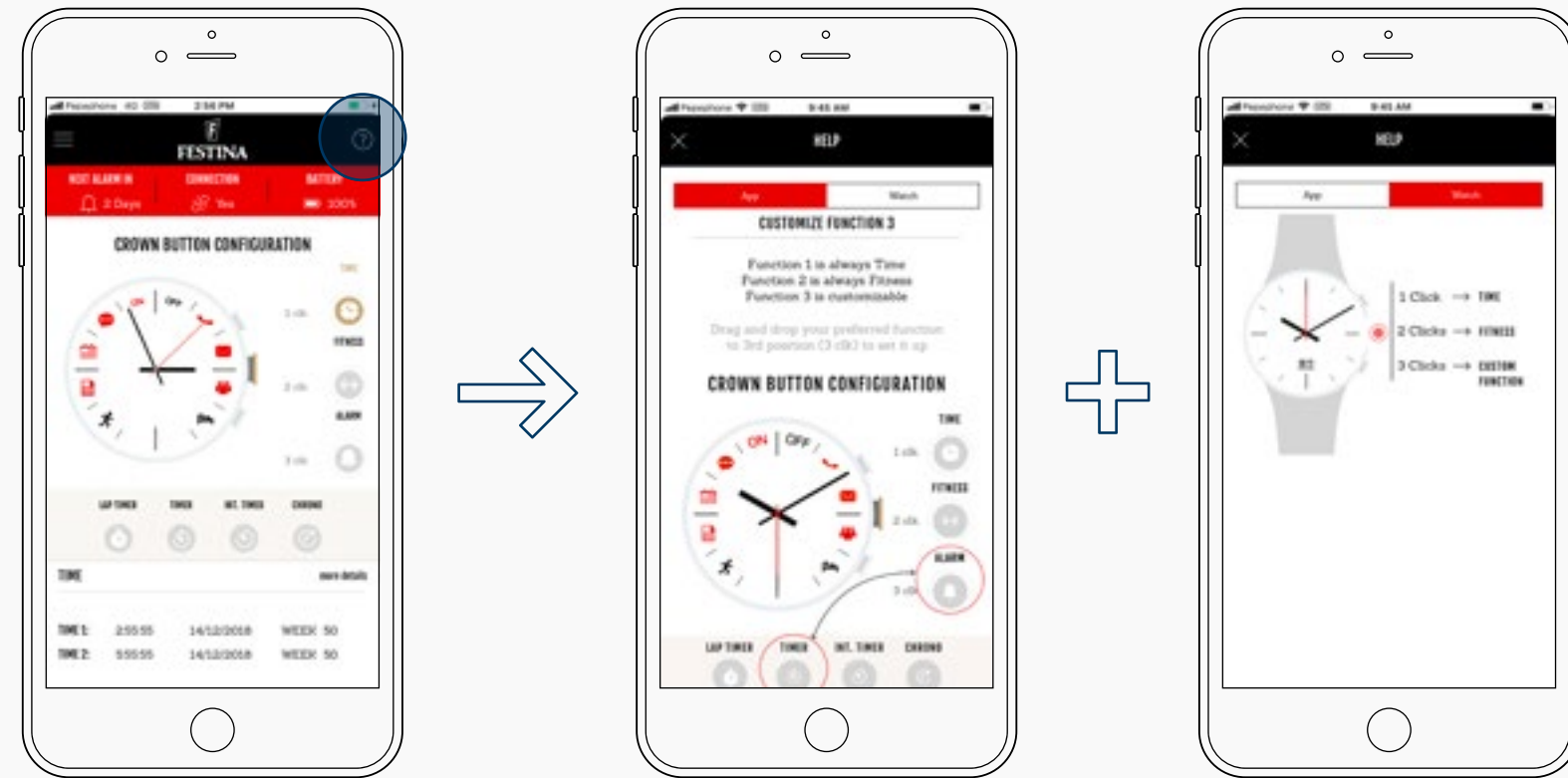


Main Functions



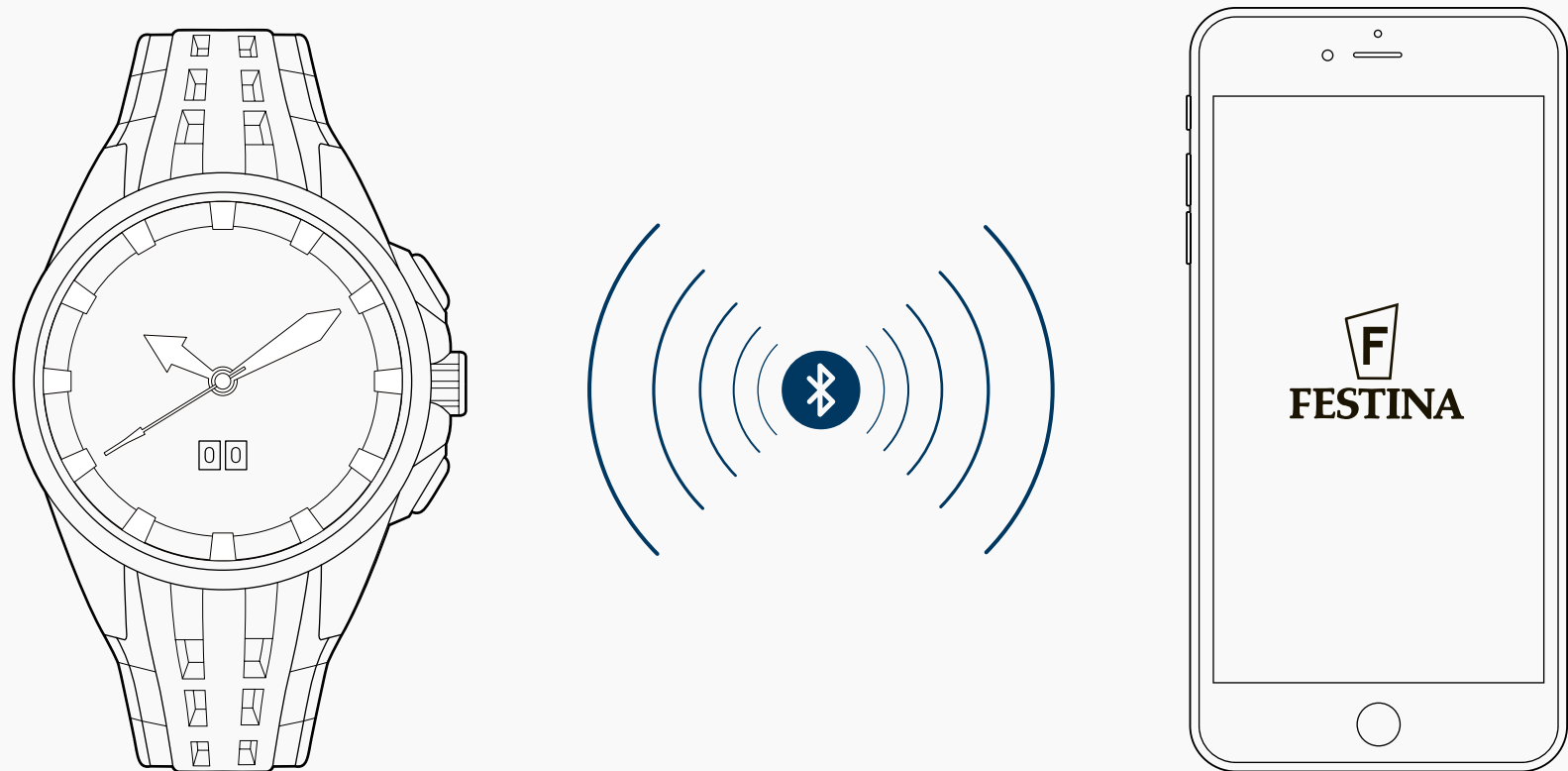
User Manual

To facilitate its use, the application provides a contextual help in the top right corner of each view. (?)



04 Quick Start

Watch Activation



1. Download the Festina application «Festina Technology».

2. Once the application is downloaded:

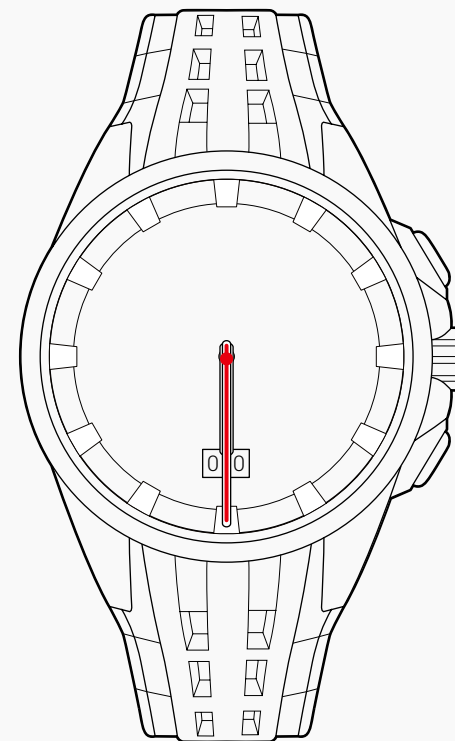
- Launch the application «Festina Tecnology»
- Follow the instructions



First Connection

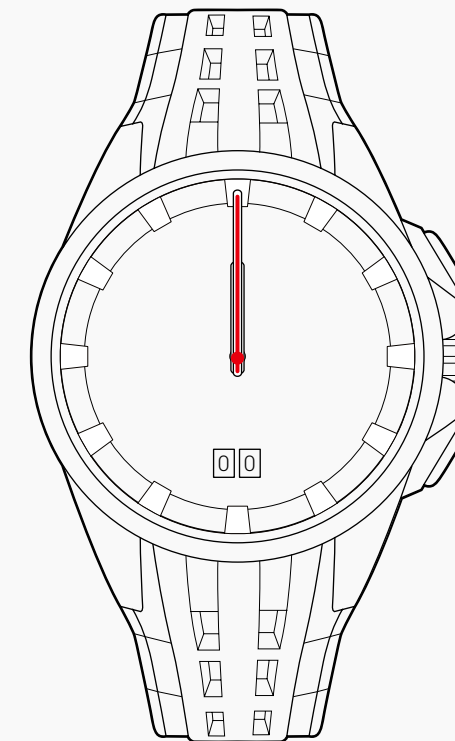
For the first connection the watch should be sufficiently charged.

- If the hands are at 6 o'clock:



Put the watch on the charger until the hands are at 12:00 in order to continue the process of the first connection.

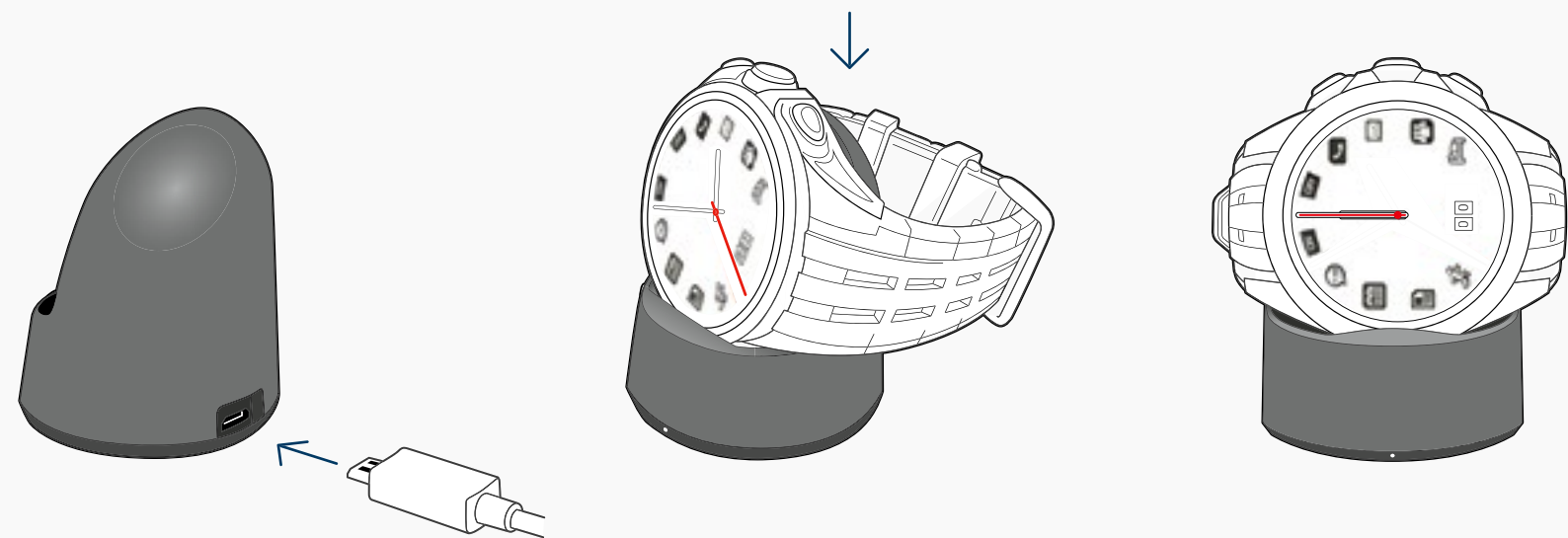
- If the hands are at 12 o'clock:



The watch is ready for connection, you can continue the process.

First Connection

For the first connection the watch should be sufficiently charged.



1. Insert the micro USB connector cable in the charging dock, and plug the cable into a power outlet.
2. Place your watch on the charging dock.
3. Wait until the hands are on 12:00 in order to continue the process of the first connection.

05— Usability & Security

Terms of use and safety

- a. Recommended operating temperature range : 0°C – 45°C.
- b. Recommended storage temperature range : -10°C – 85°C.
- c. Avoid extreme temperatures and extreme atmospheres.
- d. Keep the watch away from sharp objects that can scratch the glass.
- e. Avoid shocks of any kind.
- f. Do not expose the watch and strap to chemicals, solvents or cosmetics.

Waterproofness

The Festina Technology FS3001 supports a pressure of 5 ATM.

Water resistance indication	3 bars – 3 ATM – 30 meters	5 bars – 5 ATM – 50 meters	10 bars – 10 ATM – 100 meters	50 bars – 50 ATM – 500 meters
Splash resistant	✓	✓	✓	✓
Submersible		✓	✓	✓
Shallow diving			✓	✓
Diving				✓

Special mode

End Of Life (EOL) mode:

To increase the battery life, Festina's team has developed three EOL modes.



EOL 1 : between 20% - 10% of the battery

Second hand moves only all the 4 seconds.
All the functionalities of the watch are available.



EOL 2 : between 10% - 5% of the battery

Second hand stops to move.
Bluetooth connection no more available.
Only the time function and the fitness tracker are available on the watch.



EOL 3 : between 5% - 0% of the battery

All the hands are moving to noon.
Bluetooth connection no more available.
No functionality available on the watch.

Reset Mode



To reset the watch, you need to Push Pusher 1 and Pusher 3 during 5 seconds.
Please note that you risk to lose your settings and your datas if you reset the watch.

Battery Information



- This electronic product contains a rechargeable battery (coin cell battery).
- Do not ingest battery, Chemical Burn Hazard.
- If the battery is swallowed, it can cause severe internal burns in just 2 hours and can lead to death.
- Keep away new and used batteries from children.
- If the battery compartment does not close securely, stop using the product and keep away from children.
- If you think batteries might have been swallowed or placed inside any part of the body, seek immediate medical attention.
- A rechargeable battery has a long service life if treated properly.
- Do not expose the battery to extreme temperatures. For maximum battery capacity, use the battery at room temperature. If the battery is used in low temperatures, the battery capacity will be reduced.
- Do not try to open the watch – any operation related to the movement must be performed by a watch-maker. It includes changing the battery.
- If the watch does not properly close, stop using the product.
- If the watch starts heating during normal usage, stop using the product.

Recycling Information



This electronic product must not be disposed of in municipal waste. To preserve the environment, this product must be recycled after its useful life as required by law.

Use recycling facilities that are authorized to collect this type of waste in your area. In doing so, you will help to conserve natural resources and improve standards of environmental protection.

For information about safe and correct disposal methods, please contact your local city office or waste disposal office, or the establishment where you purchased this product.

06— Certifications

USA / Canada

Product : 915.03B

FCCID : 2AMGUFST91503B

IC : 20965-FST91503B

Radiofrequency radiation exposure Information

For body worn operation, this watch has been tested and meets the FCC RF exposure guidelines when used with the Soprod accessories supplied or designated for this product. Use of other accessories may not ensure compliance with FCC RF exposure guidelines.

Compliance information

This device complies with Part 15 of the FCC Rules and RSS-247.

Operation is subject to the following two conditions:

- (1) this device may not cause harmful interference, and
- (2) this device must accept any interference received, including interference that may cause undesired operation.

Le présent appareil est conforme aux CNR d'Industrie Canada applicables aux appareils radio exempts de licence.

L'exploitation est autorisée aux deux conditions suivantes:

- (1) l'appareil ne doit pas produire de brouillage, et
- (2) l'utilisateur de l'appareil doit accepter tout brouillage radioélectrique subi, même si le brouillage est susceptible d'en compromettre le fonctionnement.

FCC Interference Statement

This equipment has been tested and found to comply with the limits for a Class B digital device, pursuant to Part 15 of the FCC Rules. These limits are designed to provide reasonable protection against harmful interference in a residential installation. This equipment generates, uses and can radiate radio frequency energy and, if not installed and used in accordance with the instructions, may cause harmful interference to radio communications. However, there is no guarantee that interference will not occur in a particular installation. If this equipment does cause harmful interference to radio or television reception, which can be determined by turning the equipment off and on, the user is encouraged to try to correct the interference by one or more of the following measures:

- Reorient or relocate the receiving antenna.
- Increase the separation between the equipment and receiver.
- Connect the equipment into an outlet on a circuit different from that to which the receiver is connected.
- Consult the dealer or an experienced radio/TV technician for help.

NOTICE

Changes or modifications made to this equipment not expressly approved by Festina may void the FCC authorization to operate this equipment.

Europe

AUSTRIA	GREECE	NORWAY
BELGIUM	HUNGARY	POLAND
BULGARIA	ICELAND	PORTUGAL
CYPRUS	IRELAND	ROMANIA
CZECH REPUBLIC	ITALY	SLOVAKIA
DENMARK	LATVIA	SLOVENIA
ESTONIA	LITHUANIA	SPAIN
FINLAND	LUXEMBOURG	SWEDEN
FRANCE	MALTA	SWITZERLAND
GERMANY	NETHERLANDS	UNITED KINGDOM
CE		

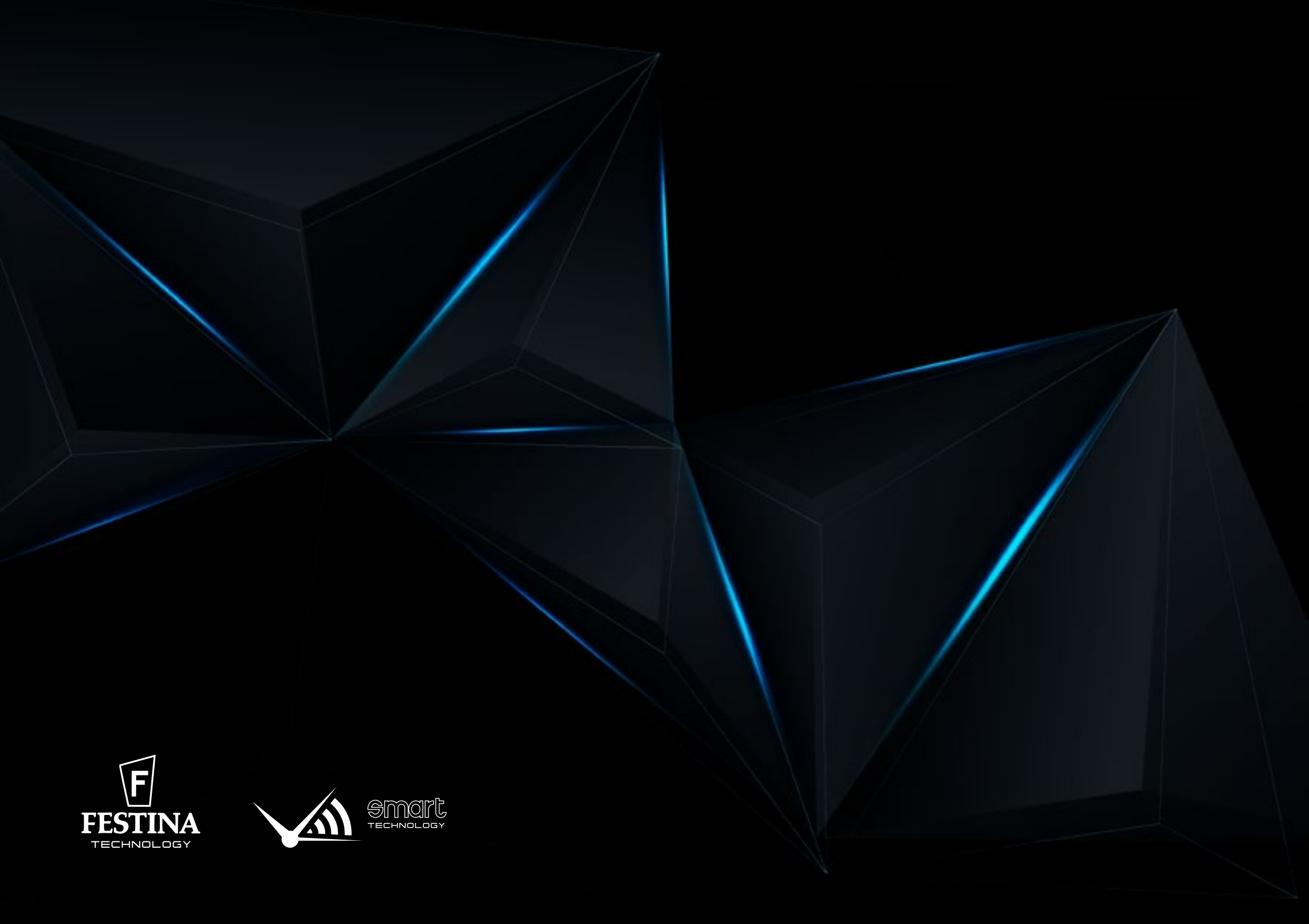
07—
Warranty

Festina warrants that this product and accessories included in the packaging against defects in material and workmanship under normal use for a period of two years starting at the date of purchase by the final purchaser.

Festina warrants only batteries whose fully charged capacity falls below 60% of their rated capacity and batteries that leak.

Festina does not warrant defects or damages that result from:

- abnormal or abusive use, improper storage or accidental damage;
- normal wear such as alteration of the color or deterioration of the watchcase or the straps.



smart
TECHNOLOGY