

Sleep/Relaxation
Sleep Sound Mask

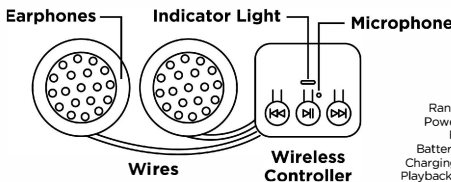
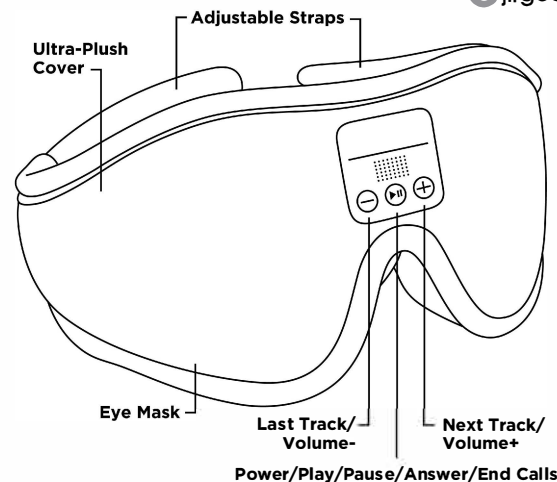
Product Instruction Manual
Please read carefully prior to use.



Charge with 5V / 1A
USB power source.
Charge completely
prior to initial use.



Please call customer
service at **1-800-254-0111**
with any questions

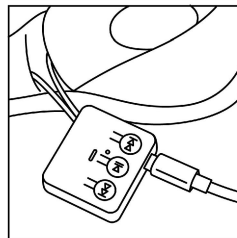


Specifications:
Bluetooth® 5.3
Range: 30 Ft. (10 Meters)
Power Input: USB 5V / 1A
Battery Type: Lithium
Battery Capacity: 200 mAh
Charging Time: Up to 2 hours
Playback Time: Up to 10 hours

Please see the reverse side for important washing instructions.

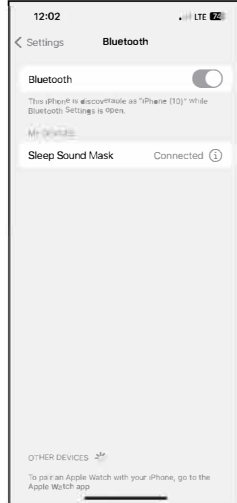
Charging

- Slide wireless controller out of eye mask enough to expose USB port.
- Connect USB cable to USB port on controller and standard 5V / 1A USB power source (not included). Do not exceed 5V / 2A charger.
- Power indicator light will turn red while charging and will turn off when complete.
- Do not charge with USB-C PD fast charger. Device may not charge due to higher voltage output and could cause damage to battery.
- Replace controller making sure control buttons are aligned with stitched buttons on eye mask.



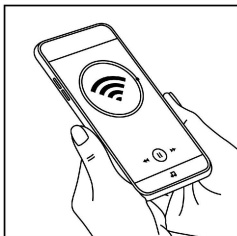
Pairing Sound Mask

- Press and hold Power/Play/Pause button to turn On.
- Indicator will flash red and blue while in pairing mode.
- Open Bluetooth® menu on your smart phone and search for new devices.
- Connect to **SLEEP SOUND MASK**. An alert will sound indicating is connected.
- Sound Mask will reconnect to smart phone automatically after initial pairing.
- If auto-reconnect does not occur then repeat the steps above.



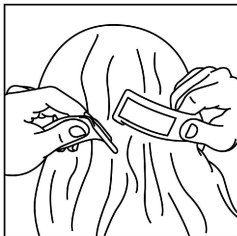
Sound / Music Playback

- Power mask On and connect to smartphone via Bluetooth®
- Open favorite sound or music player App on smartphone.
- Control sound/music playback and volume with your smartphone.
- Use control buttons on mask to play/pause music, select track, adjust volume and power On/Off.
- Short press Next / Last Track buttons to select track. Press and hold Next / Last Track buttons to adjust volume.
- Built-in microphone for calls. Short press Play/Pause button to answer / end calls.



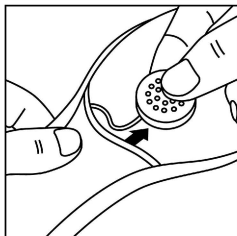
Wearing Mask

- Power mask On, connect to smartphone and begin playback.
- Wrap mask around head with eye covers centered over eyes.
- Pull straps tight around head and securely fasten in place.
- Adjust earphones into position over ears by sliding inside strap.
- Adjust mask to rest comfortably on nose and over eyes.
- Mask can be used with or without electronics.



Removing Electronics

- Remove earphones one at a time from straps by sliding out carefully. Do not pull hard on wires.
- Use fingers to slide controller out to one side.
- Follow with earphone that still needs to be removed.



Replacing Electronics

- Slide earphone with longer wire carefully through center of mask to opposite side.
- Follow with controller by sliding with fingers and secure in center of mask.
- Make sure control buttons are aligned with stitched buttons on eye mask.
- Slide earphones into pocket on straps with speakers facing in toward ears.

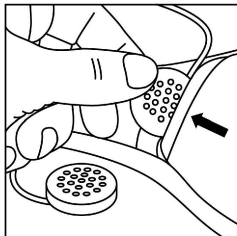
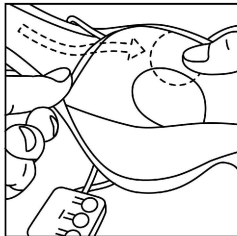
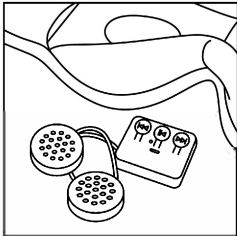


Illustration shows sequence to remove electronics. Reverse steps to replace.



Cleaning Eye Mask Cover

- Remove electronics completely prior to cleaning.
- Hand wash eye mask with mild soap and water or clean in washing machine.
- Air dry only. Do not dry with dryer.
- Allow to air dry completely prior to replacing electronics.

CAUTION! Never dry mask in dryer. Never wash or get electronics wet. Permanent damage may occur.



Hand wash mild
soap or detergent



Do not
use bleach



Hang or
air dry

WARNING! IMPORTANT CARE AND SAFEGUARDS

Failure to follow the safety instructions can lead to personal injury or property damage and damage to this product.

- This product is not suitable for children or individuals with disabilities
- This product contains small parts and is not suitable for children
- Do not use this product for anything other than its intended use
- The product is not waterproof
- Do not expose this product to rain, water or excessive humidity
- Do not store this product next to heat sources or in direct sunlight
- Do not handle this product with wet hands
- Extreme hot and/or cold weather may damage this product
- Always use this product in operating temperatures of 32°F(0°C) - 95°F(35°C)
- Never take this device apart and always get repaired by a qualified technician
- Do not use this product if it has been damaged in any way
- This product contains one or more internal batteries, please dispose responsibly

FCC Disclaimer:

This device complies with part 15 of the FCC Rules. Operation is subject to the following two conditions: (1) This device may not cause harmful interference, and (2) this device must accept any interference received, including interference that may cause undesired operation. NOTE: THE MANUFACTURER IS NOT RESPONSIBLE FOR ANY RADIO OR TV INTERFERENCE CAUSED BY UNAUTHORIZED MODIFICATIONS TO THIS EQUIPMENT. SUCH MODIFICATIONS COULD VOID THE USER AUTHORITY TO OPERATE THE EQUIPMENT.

The Bluetooth® word mark and logos are registered trademarks owned by Bluetooth SIG, Inc.

SAVE THESE INSTRUCTIONS FOR FUTURE REFERENCE

Any questions, please call customer service at 1-800-254-0111

8:30am - 5pm, PST. Monday - Friday, or email us at customerservice@jlrgear.com

2434 Research Dr., Livermore, CA 94550

© 2024 JLR Gear - Made in China



Any changes or modifications not expressly approved by the party responsible for compliance could void the user's authority to operate the equipment.

NOTE: This equipment has been tested and found to comply with the limits for a Class B digital device, pursuant to Part 15 of the FCC Rules. These limits are designed to provide reasonable protection against harmful interference in a residential installation. This equipment generates, uses and can radiate radio frequency energy and, if not installed and used in accordance with the instructions, may cause harmful interference to radio communications. However, there is no guarantee that interference will not occur in a particular installation.

If this equipment does cause harmful interference to radio or television reception,

which can be determined by turning the equipment off and on, the user is encouraged to try to correct the interference by one or more of the following measures:

- Reorient or relocate the receiving antenna.
- Increase the separation between the equipment and receiver.
- Connect the equipment into an outlet on a circuit different from that to which the receiver is connected.
- Consult the dealer or an experienced radio/TV technician for help.

The device has been evaluated to meet general RF exposure requirement. The device can be used in portable exposure condition without restriction