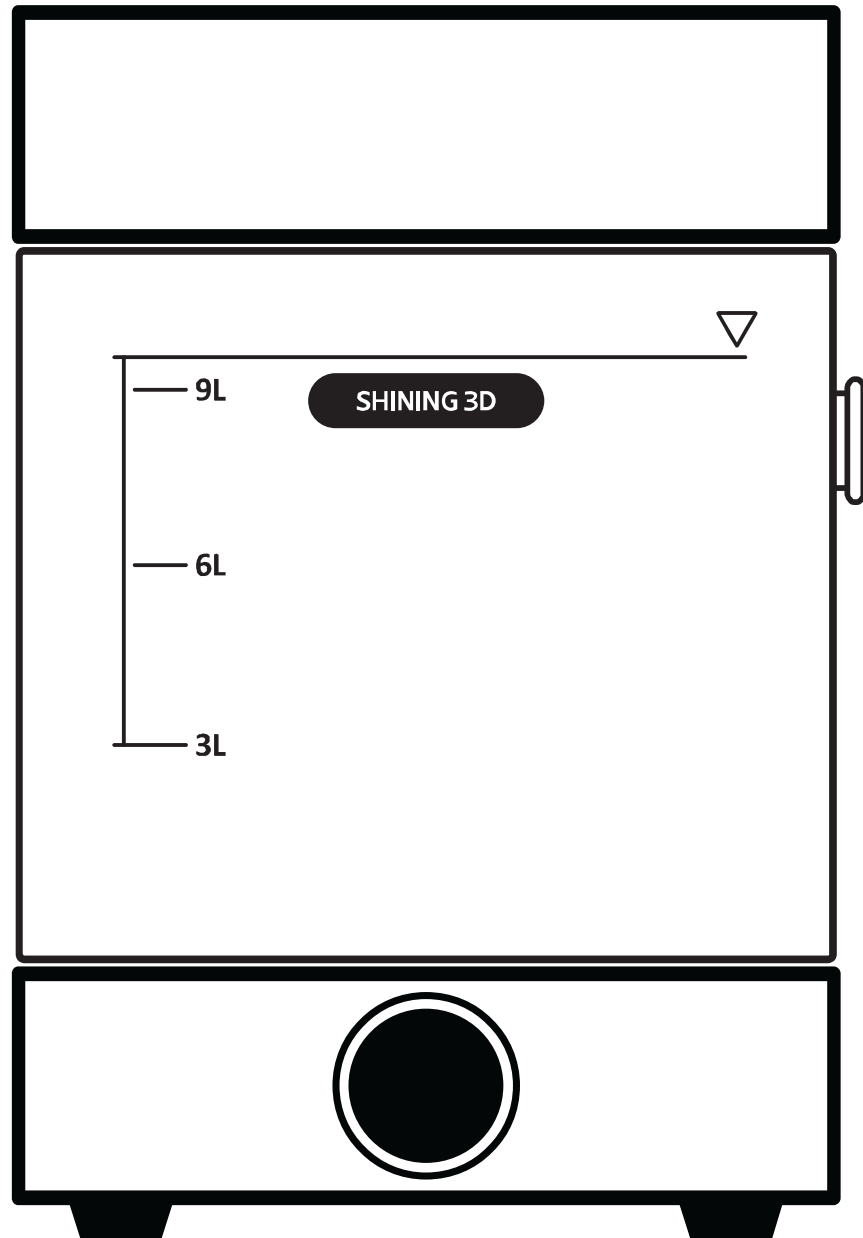




SHINING 3D



**FabWash** Post-processing Unit



**Quick Start Guide**

# Manufacturer Information

**Name:** Shining 3D Tech Co., Ltd.

**Address:** No. 1398, Xiangbin Road, Wenyan, Xiaoshan, Hangzhou,  
Zhejiang, P.R. China

## Safety Instructions

Signal	Meaning
	Additional information for particular situation.
	Improper actions or conditions that may damage the product or injury, awarranty information.
	Infammable and explosive.



FCC Regulations

### 15.19

This device complies with Part 15 of the FCC Rules. Operation is subject to the following two conditions:

(1) This device may not cause harmful interference. (2) This device must accept any interference received, including interference that may cause undesired operation.

### 15.21

Note: The grantee is not responsible for any changes or modifications not expressly approved by the party responsible for compliance. Such modifications could void the user's authority to operate the equipment.

### 15.105(b)

NOTE: This equipment has been tested and found to comply with the limits for a Class B digital device, pursuant to part 15 of the FCC Rules. These limits are designed to provide reasonable protection against harmful interference in a residential installation.

This equipment generates uses and can radiate radio frequency energy and, if not installed and used in accordance with the instructions, may cause harmful interference to radio communications. However, there is no guarantee that interference will not occur in a particular installation. If this equipment does cause harmful interference to radio or television reception, which can be determined by turning the equipment off and on, the user is encouraged to try to correct the interference by one or more of the following measures:

- Reorient or relocate the receiving antenna.
- Increase the separation between the equipment and receiver.
- Connect the equipment into an outlet on a circuit different from that to which the receiver is connected.
- Consult the dealer or an experienced radio/TV technician for help.

This device complies with FCC radiation exposure limits set forth for an uncontrolled rolled environment.

This device should be installed and operated with a minimum distance of 20cm between the radiator a  
nd your body.

Please note that changes or modifications not expressly approved by the party responsible for compliance could void the user's authority to operate the equipment.



## Washing Solvent

FabWash is compatible with the following cleaning solutions: water, IPA, industrial alcohol (75%). The structure of the device uses a one-piece injection molding scheme to prevent solution penetration and avoid the risk of cleaning solution contacting the circuit board and wiring harness. FabWash's wash bucket has a spring cover design, which maximizes the suppression of odor and pollution caused by the volatilization of the cleaning solution. FabWash's cleaning bucket is marked with a solution level guide line, which guides the user to correctly control the amount of cleaning solution added.

Important safety precautions for using FabWash:

Ventilate well. When using organic solvents such as alcohol indoors, ensure good ventilation.

Appropriate liquid level. Add an appropriate amount of cleaning solution, not exceeding the Max liquid level line.

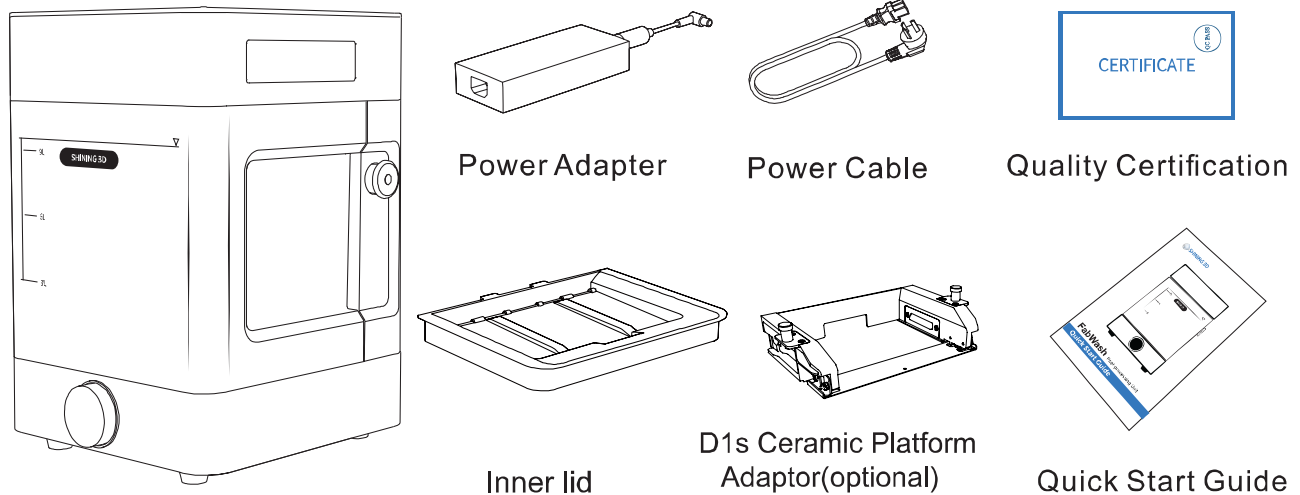
Use environment. Thoroughly remove flammable and combustible materials around the place of use. No heat sources or open flames are allowed around the place of use.

Safe storage. After the cleaning bucket is filled with cleaning solution, please install the cleaning bucket cover plate in time. The FabWash device and the FabWash cleaning bucket should be stored in a dark and cool place, and do not place them in environments where there is sunlight exposure, heating sources, etc.

Emergency disposal. If alcohol leaks, clean it up in time. Alcohol accidental ignition can be extinguished with dry powder fire extinguishers, carbon dioxide fire extinguishers, etc., and small-area fire sources can also be covered with wet towels and wet clothes to extinguish the fire.

## What's in the Box

The FabWash is protected by foam inserts around the machine. During unpacking, inspect the FabWash for any damages or missing items.



## Product Overview

**1.Knob** Turn or press to select, start or end a wash cycle.

**2.Tool Storage** Store scarper, brush or other tools.

**3.Basket** Holds prints being removed from build platform to wash.

**4.Blade** Remove the prints from the build platform Automatically.

**5.Impeller** Circulate the washing solvent in the wash chamber.

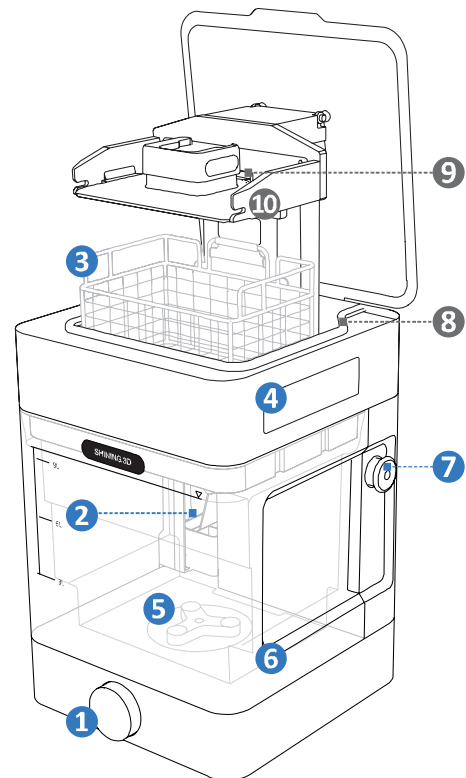
**6.Wash bucket** The container holds the solvent for washing the prints.

**7.Emergency stop button** Push the button to switch off the FabWash in order to prevent an accident.

**8.Anti-pinch sensor** Switch off the FabWash if the sensor has any shape changes.

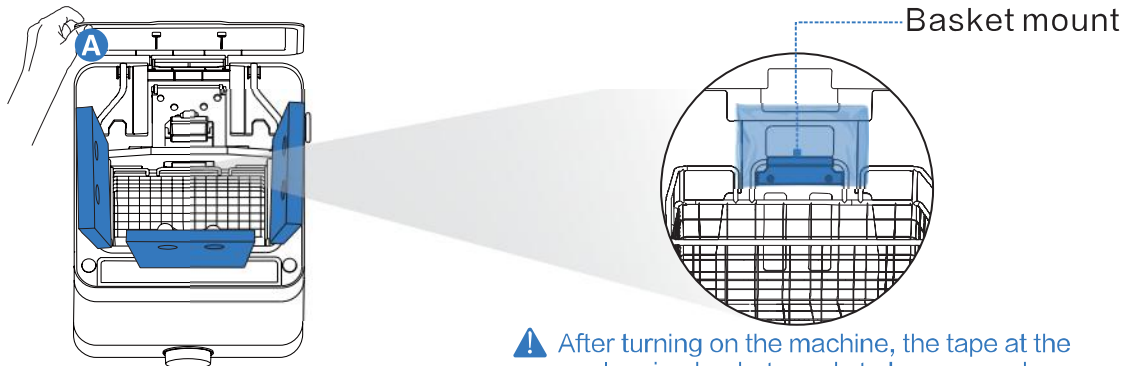
**9.Build platform sensor** Make sure the build platform is in position before washing.

**10.Platform mount** Holds the build platform.

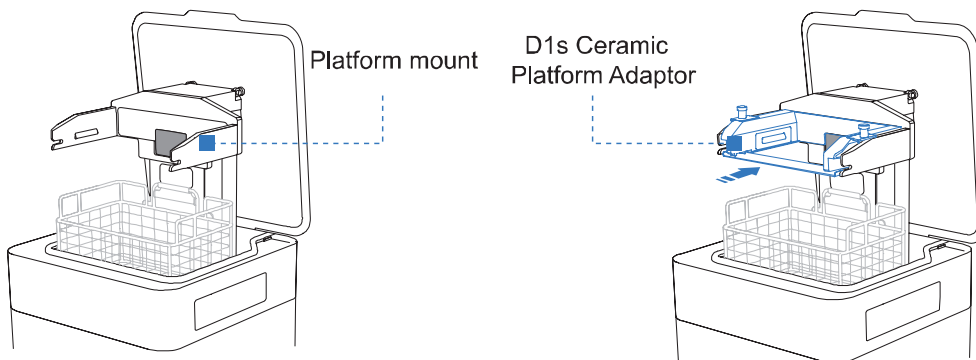


# Installing Fabwash

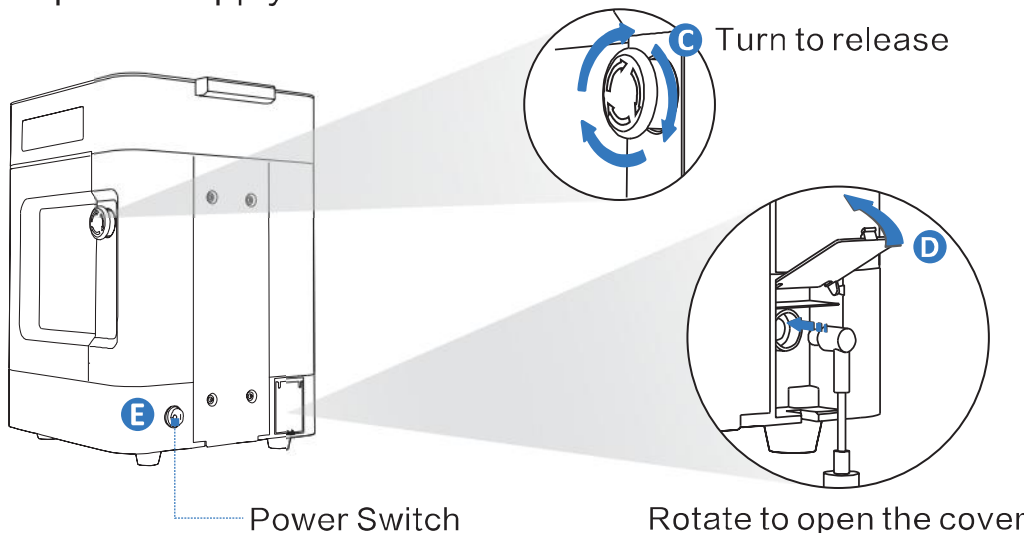
- A** Open the outer lid and Remove the **foam inserts** in the wash bucket. Make sure the basket hangs on the basket mount before power-on.



- B** Adding a platform adaptor work of the D1s printing platform.



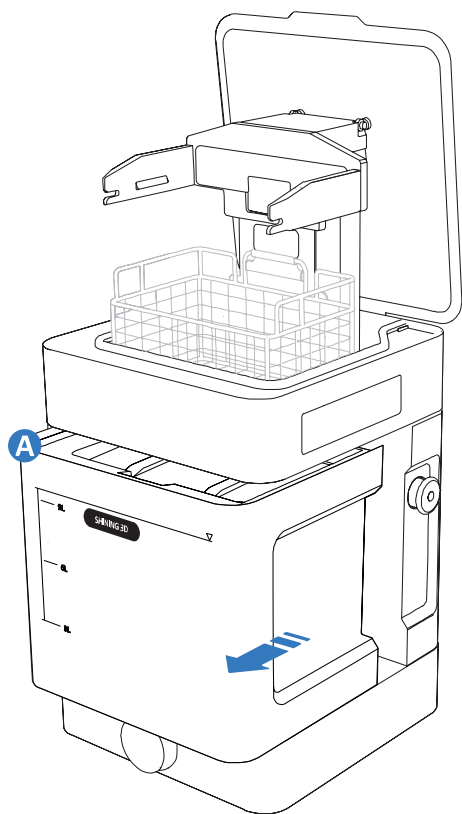
- C** Turn to release the emergency stop button.
- D** Use the provided power cable and adaptor to plug the FabWash into the power supply.



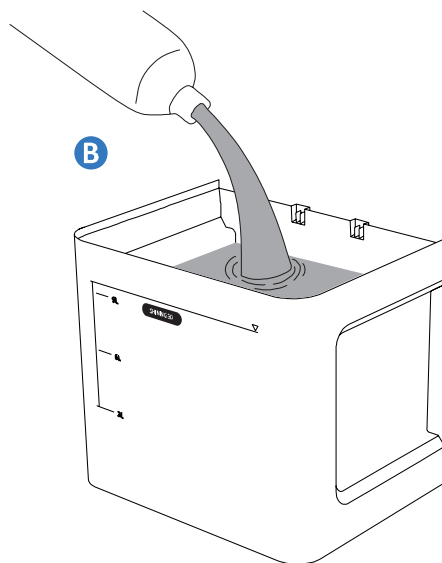
- E** Press the power switch to turn it on. The outer lid opens, and the platform mount and basket raise in position.

## Add Solvent (IPA)

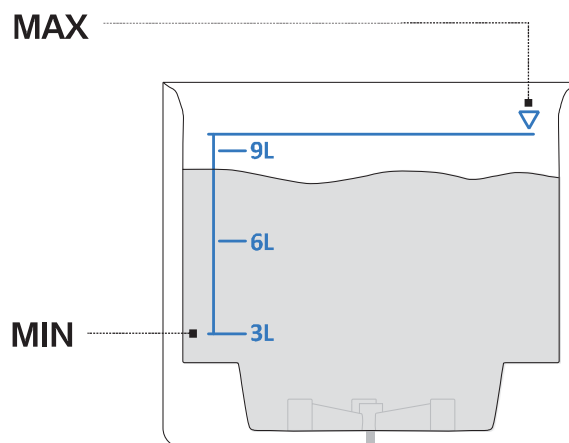
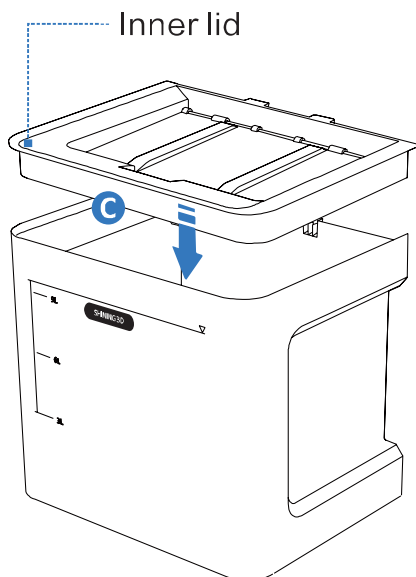
- A** Lift the wash bucket forward to remove it from the base.
- B** Pour the IPA to fill the wash bucket.



IPA > 95%



- C** After pouring into IPA, cover the inner lid. The IPA between 3L and the maximum fill line.

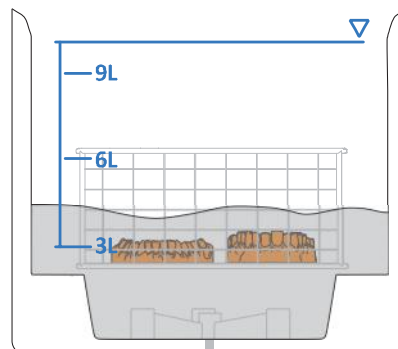


## Washing solvent level

Fill the wash bucket with IPA to reach a suitable level.

**Between 3L (minimum) and 6L**

Wash only dental prints in the basket

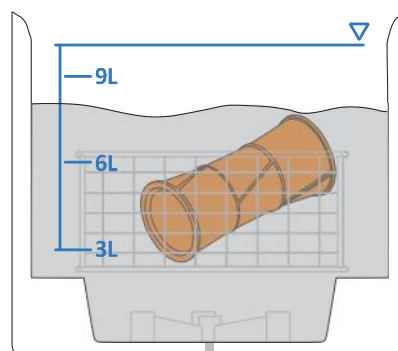


**Between 6L and 9L**

Wash other larger size prints or stack printing dental models



To prevent the IPA from overflowing, consider how much IPA a print part will displace before washing a large print.

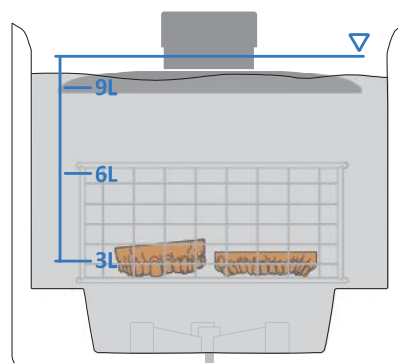


**Between 9L and ▽ (maximum)**

Wash both dental prints and platform simultaneously



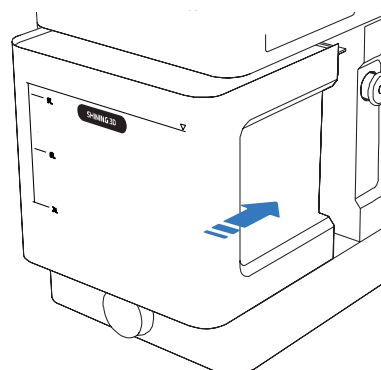
Remove some IPA from the bucket before washing a larger print and platform simultaneously.



Install the inner lid directly onto the top of the wash bucket. Insert the wash bucket into the FabWash.

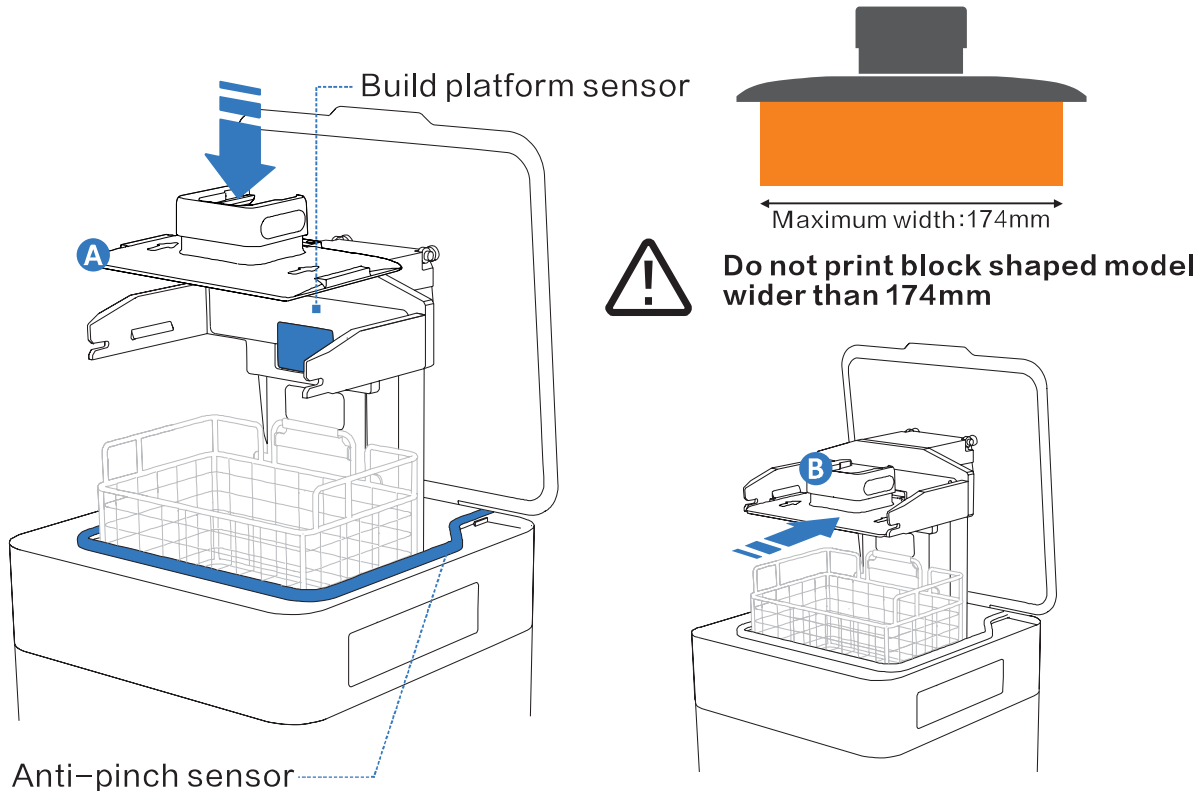


For the cleanest wash, periodically change the IPA and clean the wash bucket.



## STEP 1 Place prints

- A** Make sure the arrow on the platform points to the sensor. Align the side edges of the build platform with the mount arms, then gently push the platform down until it click into place.
- B** Insert the build platform and make sure the side of the platform touches the sensor.



Do not reach your hands into the FabWash or press the Anti-pinch sensor when the build platform mount is moving.

## STEP 2 Set operation mode

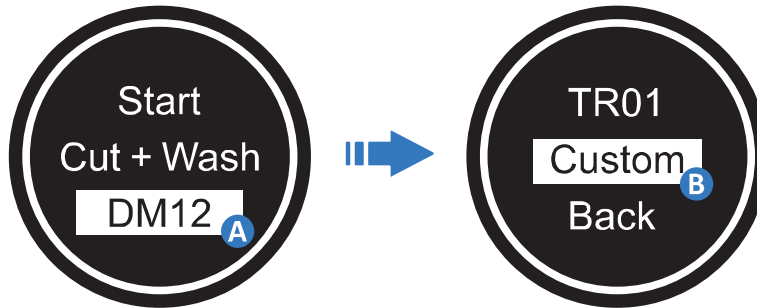
- A** Rotate the knob to move between items in the display menu.
- B** Press the knob to select or confirm an option on the display.





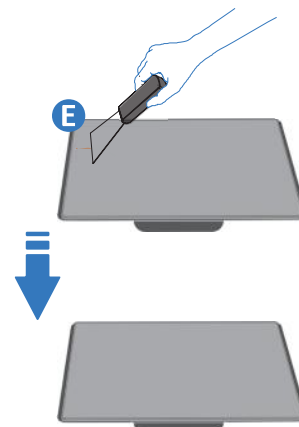
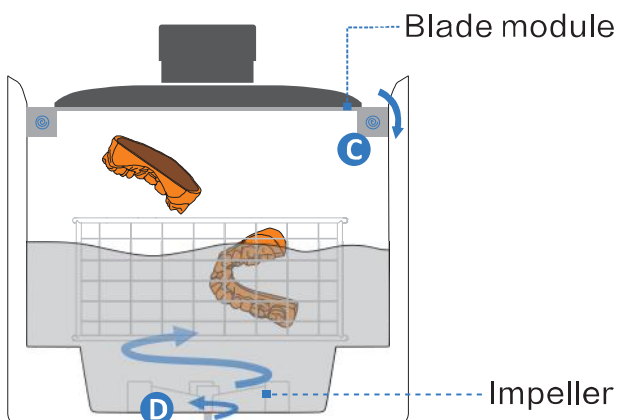
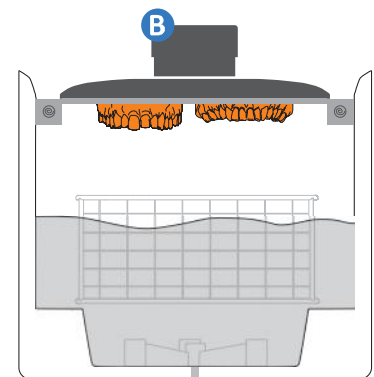
### STEP 3 Set wash time

- A Shining 3D material prints' wash time has been pre-imported into the system. Select the corresponding material to set the wash time.
- B Select **Custom** to set wash time for 3rd party material.



### STEP 4 Start wash cycle

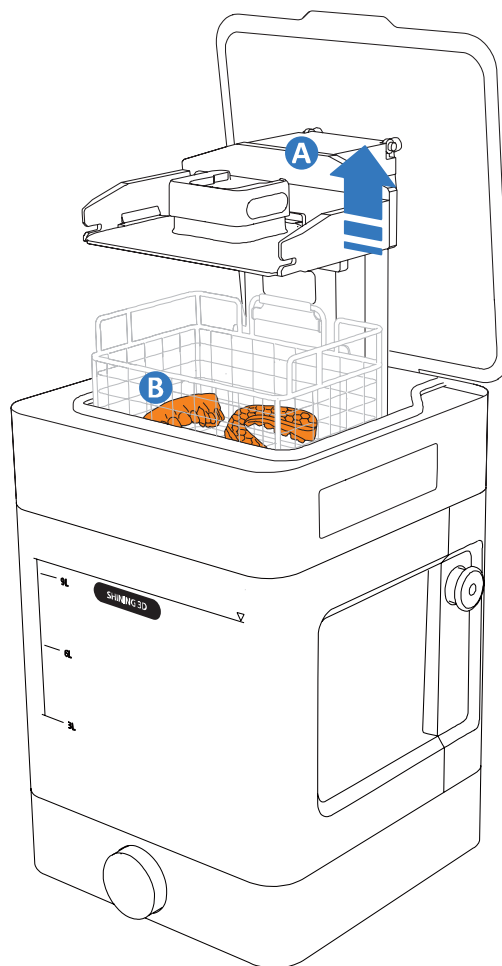
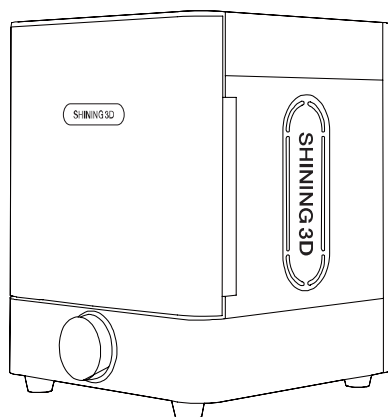
- A Select **Start** and push the knob to start current set wash cycle.
- B Start with build platform and basket lowered and the outer lid closed.
- C When the screw rotating, the blade moves forward to remove the prints from the platform.
- D The impeller at the bottom rotates to circulate the solvent to wash the prints.
- E After automatic shoveling, if there is any small debris resin on the platform, please clean it with a blade and wipe it clean before using the platform to print the model.



## STEP 5 Dry prints

- A** The build platform and basket raise automatically at the end of the wash cycle.
- B** Allow prints to dry for at least 10 minutes after washing.
- C** After washing and drying the prints, use the FabCure 2 to post-cure the prints to improve material properties.

### **C** FabCure 2



## Sleep mode

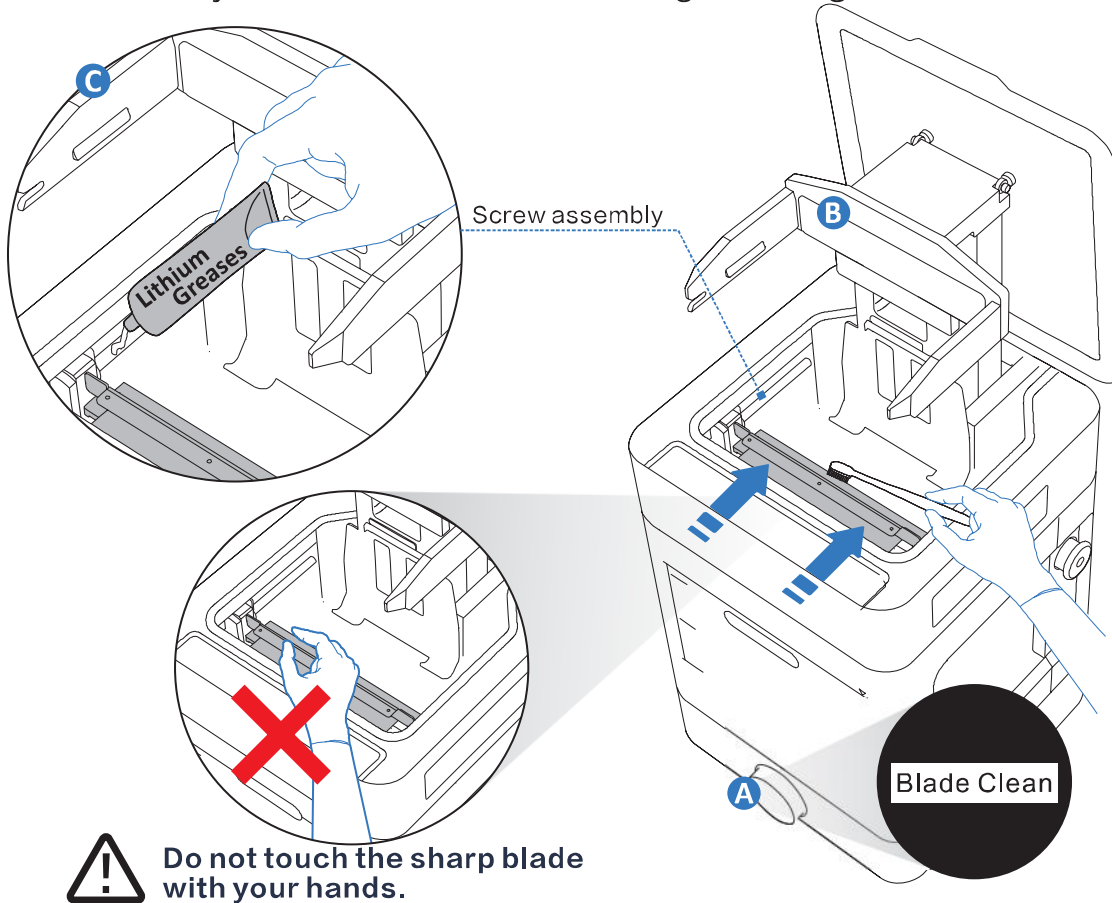
Remove the prints and the build platform from FabWash. Select and confirm the Sleep on display. The platform mount and basket lower, and the outer lid closes to prevent the solvent from dusting and limit evaporation.



Scan QR code for FabWash operation video.

## Clean the blade

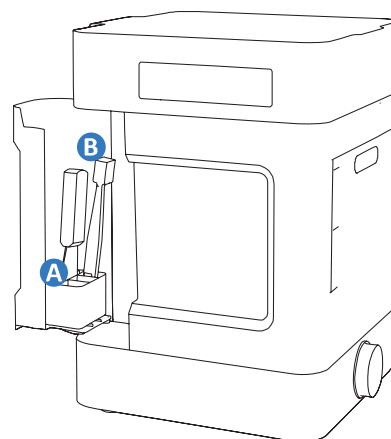
- A** The basket lowers to allow the blade moved out, clean the both sides of the blade using the brush.
- B** Turn the knob to navigate the menu and press to select and start the blade cleaning mode.  
After cleaning, select **Back** and press the knob to move the blade back to position.
- C** Periodically lubricate the screws using lithium grease.



## Tool Storage

Place tools in the tool storage in the back of the FabWash.

- A** **Scraper** Use to remove prints from the build platform.
- B** **Brush** Use to clean the build platform, wash chamber and blade.



## Technical Specifications

Product Name	FabWash
Maximum Part Size	180 x 124 x 120mm
Maximum Solvent Volume	9.5L
Interactive Mode	Knob with 1.54 inch OLED screen
Power Requirments	AC: 100–240V 2.0A 50/60Hz; DC: 24V, 150W
Operating Temperature	10°C–30°C
Storage Temperature	–10°C–70°C
Product Dimensions	302 x 327 x 752mm
Shipping Dimensions	425 x 425 x 590mm
Product Weight	15KG
Shipping Weight	20.5 KG



# SHINING 3D

## Technical Support

Register at <https://support.shining3ddental.com/en/support/home> to submit a support ticket and track your ticket status.

## Follow Us

Suggest visiting our YouTube channel to watch how-to videos and subscribe to view the latest videos of the products.

**Facebook:** <https://www.facebook.com/shining3d.dental/>

**Instagram:** <https://www.instagram.com/shining3ddental/>

**YouTube:** <https://www.youtube.com/@SHINING3DDental>

---

### APAC Headquarters

SHINING 3D Tech. Co., Ltd.  
Hangzhou, China  
P: +86-571-82999050  
Email: [sales@shining3d.com](mailto:sales@shining3d.com)  
No. 1398, Xiangbin Road, Wenyan,  
Xiaoshan, Hangzhou, Zhejiang, China,  
311258

### EMEA Region

SHINING 3D Technology GmbH.  
Stuttgart, Germany  
P: +49-711-28444089  
Email: [sales@shining3d.com](mailto:sales@shining3d.com)  
Breitwiesenstraße 28, 70565,  
Stuttgart, Germany

### Americas Region

SHINING 3D Technology Inc.  
San Leandro, United States  
P: +1415-259-4787  
Email: [sales@shining3d.com](mailto:sales@shining3d.com)  
2450 Alvarado St #7,  
San Leandro, CA 94577

[www.shining3ddental.com](http://www.shining3ddental.com)