

Solar Powered Bluetooth Garden Speaker

User's Guide for Model ISBW245



Important Safety Instructions

- Read these Instructions.
- Keep these Instructions.
- Heed all Warnings.
- Follow all instructions.
- Do not use this apparatus near water.
- Clean only with a dry cloth.
- Do not allow any ventilation openings. Install in accordance with the manufacturer's instructions.
- Do not install near any heat sources such as radiators, heat registers, stoves, or other apparatus (including amplifiers) that produce heat.
- Do not defeat the safety purpose of the polarized or grounding-type plug. A polarized plug has two blades with one wider than the other. A grounding type plug has two blades and a third grounding prong. The wide blade or the third prong are provided for your safety. When the provided plug does not fit into your outlet, consult an electrician for replacement of the obsolete outlet.
- Protect the power cord from being walked on or pinched particularly at plugs, convenience receptacles, and the point where they exit from the apparatus.
- Only use attachments/accessories specified by the manufacturer.
- Unplug this apparatus during lightning storms or when unused for long periods of time.
- Refer all servicing to qualified service personnel. Servicing is required when the apparatus has been damaged in any way, such as power-supply cord or plug is damaged, liquid has been spilled or objects have fallen into the apparatus, the apparatus has been exposed to rain or moisture, does not operate normally, or has been dropped.

FCC Warnings

Warning: Changes or modifications to this unit not expressly approved by the party responsible for compliance could void the user's authority to operate the equipment.

NOTE: This equipment has been tested and found to comply with the limits for a Class B digital device, pursuant to Part 15 of the FCC Rules. These limits are designed to provide reasonable protection against harmful interference in a residential installation. This equipment generates, uses, and can radiate radio frequency energy and, if not installed and used in accordance with the instructions, may cause harmful interference to radio communications. However,

there is no guarantee that interference will not occur in a particular installation. If this equipment does cause harmful interference to radio or television reception, which can be determined by turning the equipment off and on, the user is encouraged to try to correct the interference by one or more of the following measures:

- Reorient or relocate the receiving antenna.
- Increase the separation between the equipment and receiver.
- Connect the equipment into an outlet on a circuit different from that to which the receiver is connected.
- Consult the dealer or an experienced radio/TV technician for help.

Additional Warnings and Precautions

- **CAUTION:** TO PREVENT ELECTRIC SHOCK, MATCH WIDE BLADE OF PLUG TO WIDE SLOT, FULLY INSERT.
- Mains plug is used as disconnect device and it should remain readily operable during intended use. In order to disconnect the apparatus from the mains completely, the mains plug should be disconnected from the mains socket outlet completely.
- **WARNING:** Shock hazard - Do Not Open.
- **CAUTION:** Use of controls or adjustments or performance of procedures other than those specified may result in hazardous radiation exposure.
- **WARNING:** Changes or modifications to this unit not expressly approved by the party responsible for compliance could void the user's authority to operate the equipment.
- **WARNING:** Do not place this unit directly onto furniture surfaces with any type of soft, porous, or sensitive finish. As with any rubber compound made with oils, the feet could cause marks or staining where the feet reside. We recommend using a protective barrier such as a cloth or a piece of glass between the unit and the surface to reduce the risk of damage and/or staining.
- **WARNING:** Do not ingest battery, chemical burn hazard.
- Battery shall not be exposed to excessive heat such as sunshine, fire or the like.
- Lithium batteries, like all rechargeable batteries, are recyclable and should be recycled or disposed of according to state and local guidelines. They should never be disposed of in normal household waste, and they should never be incinerated, as they might explode. Contact your local government for disposal or recycling practices in your area.



WARNING: To reduce the risk of electric shock, do not remove cover (or back). No user-serviceable parts inside. Refer servicing to qualified service personnel.



The exclamation point within an equilateral triangle is intended to alert the user to the presence of important operating and maintenance (servicing) instructions in the literature accompanying the appliance.



The lightning flash with arrowhead symbol, within an equilateral triangle, is intended to alert the user to the presence of un-insulated "dangerous voltage" within the product's enclosure that may be of sufficient magnitude to constitute a risk of electric shock to persons.



This symbol indicates that this product incorporates double insulation between hazardous mains voltage and user accessible parts.



WARNING: This product can expose you to chemicals including lead, which is known to the State of California to cause cancer. For more information go to: www.P65Warnings.ca.gov This product meets and complies with required Federal product guidelines.

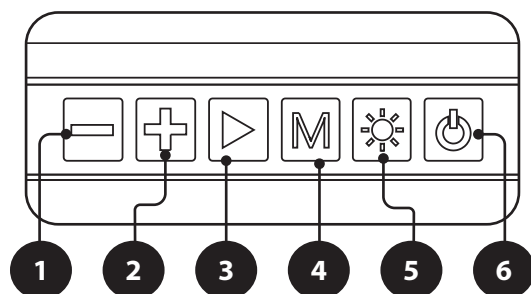
Features

- Bluetooth: range approximately 59 ft
- IPX5 waterproof protection
- Solar charging panels
- Removable yard stakes
- LED light changing modes
- Rechargeable battery: up to 9–10 hours with lights off and 50% volume

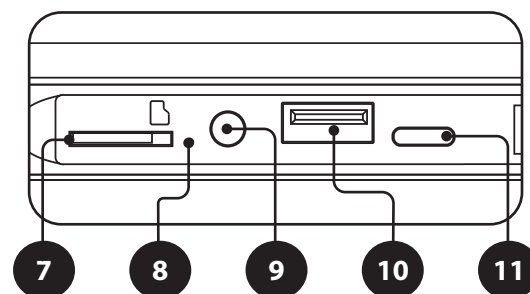
Includes

- User's guide
- USB-A to USB-C cable
- Removable ground stake

Controls and Functions



1. **Vol -:** Press to decrease the volume. Press and hold to go to the previous track.
2. **Vol +:** Press to increase the volume. Press and hold to go to the next track
3. **Play/Pause:** Press to pause or resume playback. Press and hold to manually connect/disconnect Bluetooth.
4. **Mode:** Press to change audio sources. Press and hold 5s to turn voice prompts on/off.
5. **Lights:** Press to cycle through the light effect. Press and hold to turn on Night Mode for lights to automatically turn on at night and off during the day. Press twice to turn lights off.



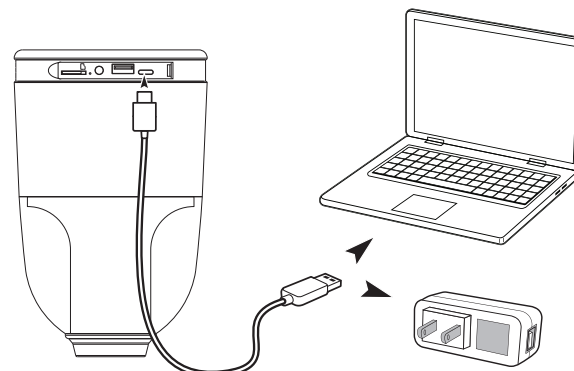
6. **Power:** Press and hold down to power the Bluetooth speaker on/off. Press twice to activate Party Plus pairing.
7. **MicroSD Slot**
8. **Charging Indicator Light**
9. **Aux In**
10. **USB port**
11. **DC Power In**

Charging the Speaker

Charge fully before use. The charge time is approximately 3 hours.

When the speaker is charging, the **Charging Indicator Light** will display a solid red light. When charging is complete, the indicator will turn off.

Using a USB-A to USB-C cable (included), connect the **DC Power Input** on the speaker to the USB port of a powered-on computer or USB power adaptor (not included) to charge the speaker.



Bluetooth Wireless

Pairing & Playing Audio

1. When powered on, the speaker will enter Bluetooth Mode automatically.
2. Using the Bluetooth setting on your device, search for new devices and select **ISBW245**. Refer to the user's manual for your specific device for instructions on pairing and connecting Bluetooth devices.
3. When successfully paired, a voice prompt will announce "Bluetooth connected."
4. Use the controls on the connected device to select and begin playing audio. Use the controls on the speaker or the connected device to play, pause, and adjust volume.

Note: The unit will automatically connect to the last paired device when powering on. If your device becomes unpaired or it is unable to connect, press and hold the **Play/Pause** button to disconnect and enter pairing mode. A voice prompt will announce "Bluetooth is connecting" start from step two to connect to your device.

Party Plus Mode

Pair two **ISBW245** speakers wirelessly to double the audio from your Bluetooth device.

1. Power on both speakers. Press the **Power** button on one ISBW245 speaker twice to enter Party Plus mode. The speaker will chime, indicating it is ready to pair. After the speakers successfully connect, a voice will announce the connection.
2. Using the Bluetooth setting on your device, search for new devices and select **ISBW245**.
3. To exit Party Plus Mode, press the **Power** button twice on either speaker.

Note: When powered off while paired, the two speakers will reconnect again after powering on.

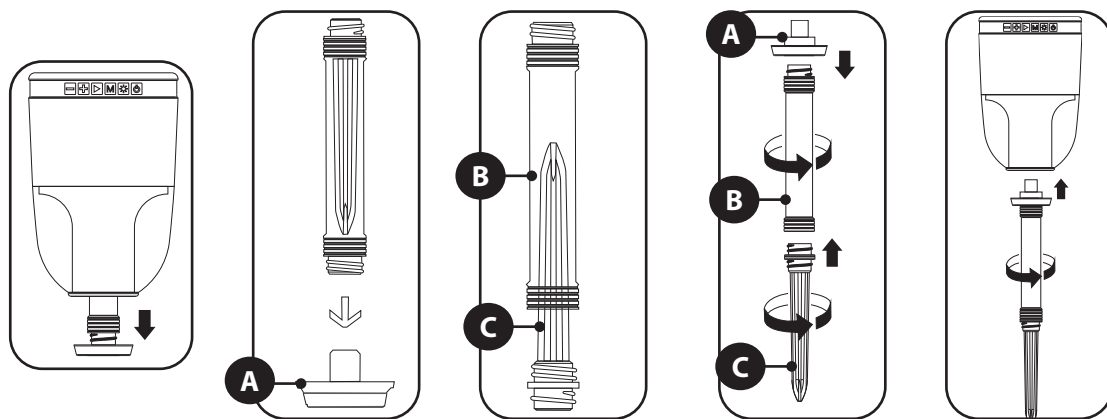
Night Mode

You can use Night Mode to set the lights to turn on/off automatically in response to the amount of daylight. Turn Night Mode on by pressing and holding the **Lights** button.

Removable Stakes

1. Remove the stake from the bottom of the speaker.
2. Remove the base (part **A**) from the end of the stake shaft (part **B**).
3. Pull the grounding stake (part **C**) out of the shaft (part **B**).
4. Screw the base (part **A**) onto the top of the shaft (part **B**). Then, screw the bottom of the shaft into the grounding stake (part **C**).
5. Screw the bottom of the speaker into place on top of the stake base.

Note: To take the ground stakes apart, gently rotate the stake to detach it from the pole sections. Do not use excessive force. Do not overtighten the speaker onto the stake base. It may cause stripping.



Customer Support

To download this User's Guide in English, Spanish, or French, or to get answers to frequently asked questions, visit the support section at: www.iLiveElectronics.com

Para descargar este Manual del Usuario en inglés, español y francés, o para obtener respuestas a preguntas frecuentes, visite la sección de apoyo en: www.iLiveElectronics.com

Pour télécharger ce guide de l'utilisateur en anglais, espagnol ou français, ou pour obtenir des réponses à des questions fréquemment posées, consultez la rubrique d'assistance sur: www.iLiveElectronics.com

For Warranty Information and the most up-to-date version of this User's Guide, go to www.iLiveElectronics.com

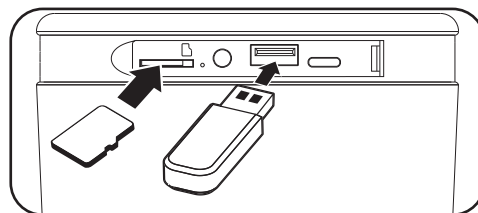
Customer Service: 1-888-999-4215 | Email Support: prodinfo@dpiinc.com | Email Parts: partsinfo@dpiinc.com

Copyright © 2025 Digital Products International (DPI, Inc.) All other trademarks appearing herein are the property of their respective owners. Specifications are subject to change without notice.

USB and MicroSD

Supports USB drives and MicroSD cards up to 32GB.

1. Insert a USB drive into the **USB Port** or a MicroSD card into the **MicroSD Slot** on the speaker.
2. The speaker will automatically switch to **MicroSD** or **USB** mode. To enter either playback mode from another source, press the **Mode** button.

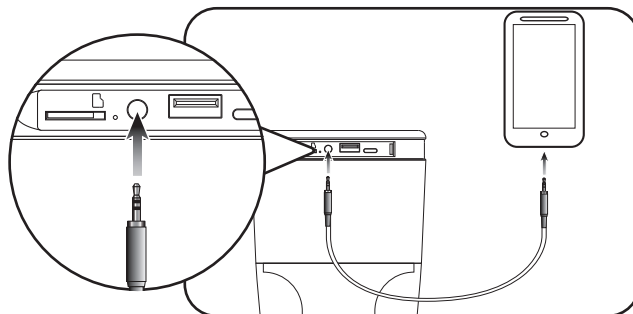


Aux In

Requires a 3.5mm audio cable (not included).

1. Connect a 3.5mm audio cable to the **Aux In** on the speaker and the **audio output/headphone jack** on an audio device.
2. The unit will automatically switch to **Aux in** mode. To switch to Aux Mode from another source, press the **Mode** button.
3. Use the controls on the connected device to select and play audio.

Note: If the playback volume through the speaker is low, make sure the volume level on your connected device is turned up.



Protect for Today
Sustain for Tomorrow

FCC STATEMENT :

This device complies with Part 15 of the FCC Rules. Operation is subject to the following two conditions:

- (1) This device may not cause harmful interference, and
- (2) This device must accept any interference received, including interference that may cause undesired operation.

Warning: Changes or modifications not expressly approved by the party responsible for compliance could void the user's authority to operate the equipment.

NOTE: This equipment has been tested and found to comply with the limits for a Class B digital device, pursuant to Part 15 of the FCC Rules. These limits are designed to provide reasonable protection against harmful interference in a residential installation.

This equipment generates uses and can radiate radio frequency energy and, if not installed and used in accordance with the instructions, may cause harmful interference to radio communications. However, there is no guarantee that interference will not occur in a particular installation. If this equipment does cause harmful interference to radio or television reception, which can be determined by turning the equipment off and on, the user is encouraged to try to correct the interference by one or more of the following measures:

Reorient or relocate the receiving antenna.

Increase the separation between the equipment and receiver.

Connect the equipment into an outlet on a circuit different from that to which the receiver is connected.

Consult the dealer or an experienced radio/TV technician for help.

RF warning statement:

The device has been evaluated to meet general RF exposure requirement. The device can be used in portable exposure condition without restriction.