

G1.5

智能无线立体声耳机



使用说明书

使用前请阅读

感谢您选择我们的智能产品。
为了充分了解设备的功能，我们建议您仔细阅读本手册。
智能耳机主要依靠蓝牙连接到您的手机，它提供了全新的实用功能和服务，提高您的使用体验。
本公司保留随时更新本手册内容的权利，恕不另行通知。
我们在此提醒您，如果耳机因不遵守所提供的说明书而损坏，本公司将不提供免费维修服务。

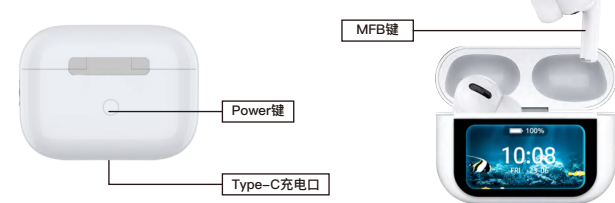
基本参数

名称: 充电仓 型号: G1.5

耳机仓参数			
芯片	AB/JL	触摸	COB
内存	16/32MB	霍尔	支持
主控	BT5.3/3.0	按键	支持
屏幕尺寸	1.47	电池	自定义
分辨率	172*320	充电方式	TYPE-C/支持无线充

耳机参数			
芯片	AB/JL	降噪	支持
BT	BT3.0	入耳检测	支持

按键定义



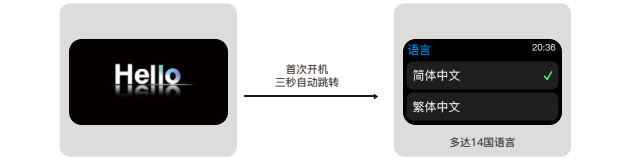
耳机操作说明

音乐	播放/暂停	单击FMB键
	下一曲	双击R-FMB键
	上一曲	双击L-FMB键
	加/减音量	上/下滑动FMB键
	降噪/通透/关闭模式	长按5秒FMB键
耳机	自动播放/暂停	戴上/摘取耳机
	开机	耳机仓开机/开盖自动开机
	关机	未连接蓝牙1分钟后自动关机
	自动配对	出仓自动配对
	手动配对	开盖长按3秒Power键
耳机仓	开机	长按3秒Power键
	关机	进入设置-通用-关机界面进行关机
	亮屏/熄屏	单击Power键
	返回主页	单击Power键

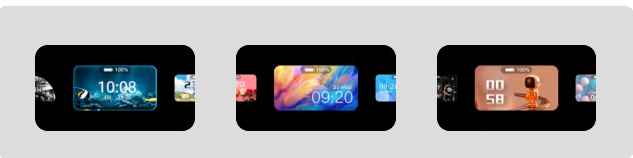


充电仓主要功能

1: 首次开机: 长按power键3秒开机, 语言选择



2、壁纸选择: 长按壁纸3秒切换壁纸



3、其他功能



保修卡

凭本卡保修。请妥善保管送修时，请填写相关信息并附寄本保修卡

用户档案	_____年____月____日
用户姓名:	
联系电话:	
购买店铺:	
订单编号:	
产品故障描述:	
寄回地址:	

保修服务内容
1. 产品自购买日起保修期为12个月(包装配件不属于保修范围);
2. 购买本产品后7天内出现质量问题, 且外观无购后人为损伤, 可直接更换同款同型号的新机;
3. 产品发生故障时, 建议您首先咨询您的销售机构或客服人员, 经确认操作原因后, 他们会为您安排售后维修服务;
以下情况不列入保修范围:
1. 产品超出保修期限的;
2. 未能出具购买凭证或本公司无法核实购买日期的;
3. 人为导致产品破、磨、刮损的, 以及因非正常佩戴导致表带断裂的;
4. 自行拆机的;
5. 产品因进水导致的故障与损坏的;
维修说明
1. 送修时请您出示本质保卡与购买凭证, 以及附上产品故障说明(最终以本公司专业检修为准必要时我们会向您致电核实);
2. 对于非保修的产品, 本公司提供有偿维修服务, 相关费用与延保期限详询相关服务条例。

特别声明

本蓝牙耳机与APP为佩戴者提供全面系统的健康安全方面的多项功能, 但蓝牙耳机非专业医疗设备, 相关检测数据仅供日常生活参考, 不用作医疗诊断用途。因产品不同版本其功能与外观设计不同, 本操作手册图片仅供参考, 请以你选购的实物为准。因产品与APP功能不断升级, 本操作手册仅供参考, 以手表与 APP 实际功能为准。



G1.5

Intelligent wireless stereo headphones



Instruction manual

Please read before use

Thank you for choosing our smart products.
In order to fully understand the capabilities of the device, we recommend that you read this manual carefully.
Smart headphones mainly rely on Bluetooth to connect to your mobile phone, which provides new practical features and services to improve your experience.
The Company reserves the right to update the contents of this manual at any time without prior notice.
We would like to remind you that if your earphone is damaged due to non-compliance with the instructions provided, we do not offer a free warranty.

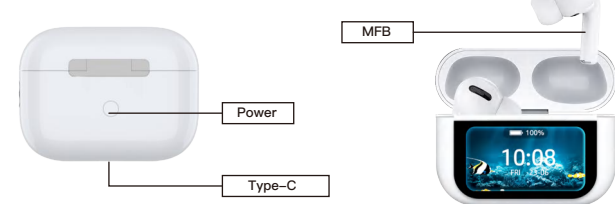
Basic parameters

Name: Charging compartment Model: G1.5

Headphone compartment parameters			
Chipset	AB/JL	Touch	COB
FLASH	16/32MB	Hall	Support
Master control	BT5.3/3.0	Keys	Support
Screen Size	1.47	Battery	Custom
Resolving Power	172*320	Charging Method	TYPE-C/ supports wireless charging

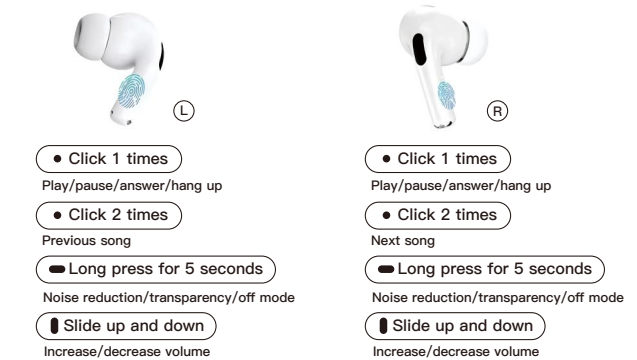
Headphone parameters			
Chipset	AB/JL	Denoise	Support
BT	BT3.0	Ear detection	Support

Key Definition



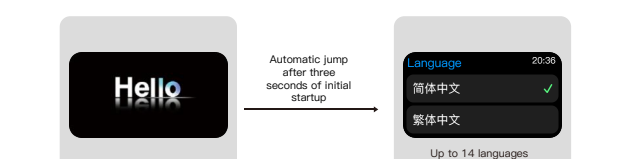
Instructions

Music	Play/Pause	Click the FMB button
	Next song	Double click the R-FMB key
	Previous song	Double click the L-FMB key
	Increase/decrease volume	Slide FMB keys up/down
	Noise reduction/transparency/and off mode	Long press the FMB button for 5 seconds
Headset	Auto Play/Pause	Wearing/Removing headphones
	Power on	Headphone compartment power on/ automatically turns on when opened
	Shutdown	Automatically shut down after 1 minute without Bluetooth connection
	Auto pairing	Automatic pairing for outbound warehouse
	Manual pairing	Open the lid and press and hold the Power button for 3 seconds
Earphone compartment	Power on	Long press the Power button for 3 seconds
	Shutdown	Enter the Settings General Shutdown interface to shut down the device
	On/Off screen	Click the Power button
	Return to Home	Click the Power button

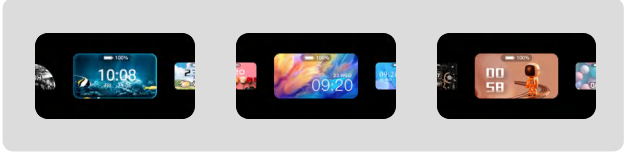


Charging binmajor function

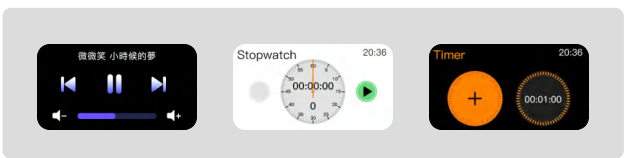
1: First boot: Press and hold the power button for 3 seconds to boot, language selection



2. Wallpaper selection: Press and hold the wallpaper for 3 seconds to switch wallpaper



3、Other functions



Warranty card

With the warranty of this card, please keep it properly when sending it for repair. please fill in the relevant information and attach this warranty card

User Profiles	Date:
Username:	
Phone:	
Shop to buy:	
Order Number:	
Return Address:	

Warranty service content
1. The warranty period of the product is 12 months from the date of purchase (packaging accessories are not covered by the warranty);
2. There is a quality problem within 7 days after purchasing this product, and there is no man-made damage to the appearance after purchase injury, can be directly replaced with the same style and model of the new machine;
3. When the product fails, it is recommended that you first consult your sales organization or customer service staff, and after eliminating the misoperation factors, they will arrange after sales maintenance services for you.

The following cases are not covered by the warranty

- The product exceeds the warranty period;
- Failure to issue proof of purchase or the Company's inability to verify the date of purchase;
- Man-made product breakage, wear, scratch, and abnormal wear caused by the watch belt breakage;
- Disassemble the machine by yourself;
- Failure and damage caused by water ingress of the product.

Repair Instructions

- When sending for repair, please present this warranty card and purchase voucher, as well as attach the product malfunction Explanation(The final professional maintenance of our company shall prevail. If necessary, we will call you to verify);
- For non-warranty products, the company provides paid maintenance services and related costs. Please refer to the relevant service regulations for details of the extended warranty period.

Special Statement

This watch and APP provide the wearer with a comprehensive system of health and safety functions but this watch is not a professional medical equipment, and the relevant test data is only for reference in daily life and is not used for medical diagnosis. Due to the different versions of the product and its function and appearance configuration is different, the pictures in this operationmanual are for reference only, please refer to the actual product you purchased. Due to the continuous upgrading of the product and APP functions, this operation manual is for reference only, and the actual functions of the watch and APP shall prevail.

FCC Warning Statement: Changes or modifications to this unit not expressly approved by the party responsible for compliance could void the user's authority to operate the equipment. This equipment has been tested and found to comply with the limits for a Class B digital device, pursuant to Part 15 of the FCC Rules. These limits are designed to provide reasonable protection against harmful interference in a residential installation. This equipment generates, uses and can radiate radio frequency energy and, if not installed and used in accordance with the instructions, may cause harmful interference to radio communications.

However, there is no guarantee that interference will not occur in a particular installation. If this equipment does cause harmful interference to radio or television reception, which can be determined by turning the equipment off and on, the user is encouraged to try to correct the interference by one or more of the following measures:

- Reorient or relocate the receiving antenna.
- Increase the separation between the equipment and receiver.
- Connect the equipment into an outlet on a circuit different from that to which the receiver is connected.
- Consult the dealer or an experienced radio/TV technician for help.

This device complies with Part 15 of the FCC Rules. Operation is subject to the following two conditions: (1) this device may not cause harmful interference, and (2) this device must accept any interference received, including interference that may cause undesired operation.

FCC Radiation Exposure Statement

The device has been evaluated to meet general RF exposure requirement. The device can be used in portable exposure condition without restriction.