

# Product overview

## Introduction and function highlights

FUNING BOARD consists of remote control, power wheel&suspension parts, battery control unit and connector. The connector only weights 100g that can be placed on board all the time. Power wheel&suspension parts and battery control unit are connected by buckles which is very convenient for disassembly and assembly. The power battery of can be replaced and can store more batteries as need.

Going forward and braking are controlled by remote control, the left and right turning is obtained by feet press on the board as normal boards. The board will brake gradually if the remote control failed. There are three modes on the remote control, they are easy, medium and hard. Users are recommended to use the easy model to adapt it firstly.

The highest speed of FUNING BOARD can be 30KM/h, the cruising distance of a single battery is 18 KM (The highest speed and cruising distance are realized under lab environment, only for reference).

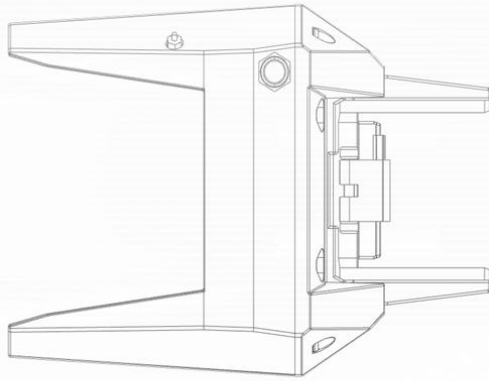
## Notes

FUNING BAORD is mainly compatible with top mount SKATEBOARD, if it is drop through SKATEBOARD or other not applicable board, please buy it with cautions.

FUNING BOARD  
FUNING BOARD is not Optimus prime, please keep it far from open fire and do not hit it. Any direct contact of this product with water is strictly prohibited (This product can prevent the splash water.)

FUNING BOARD is not a cross-country device, so please do not use this product on complex terrain. Please use it on flat ground.

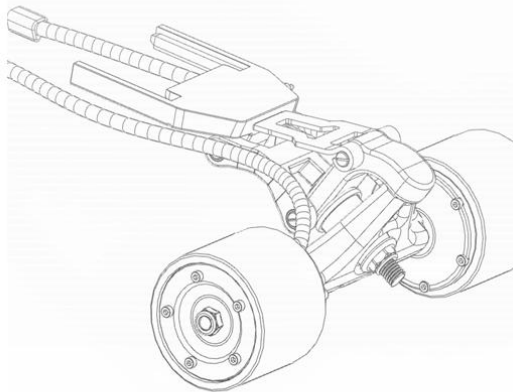
## Bill Of Material



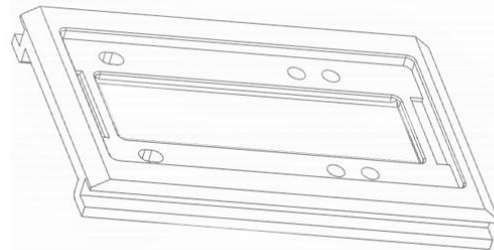
control unit



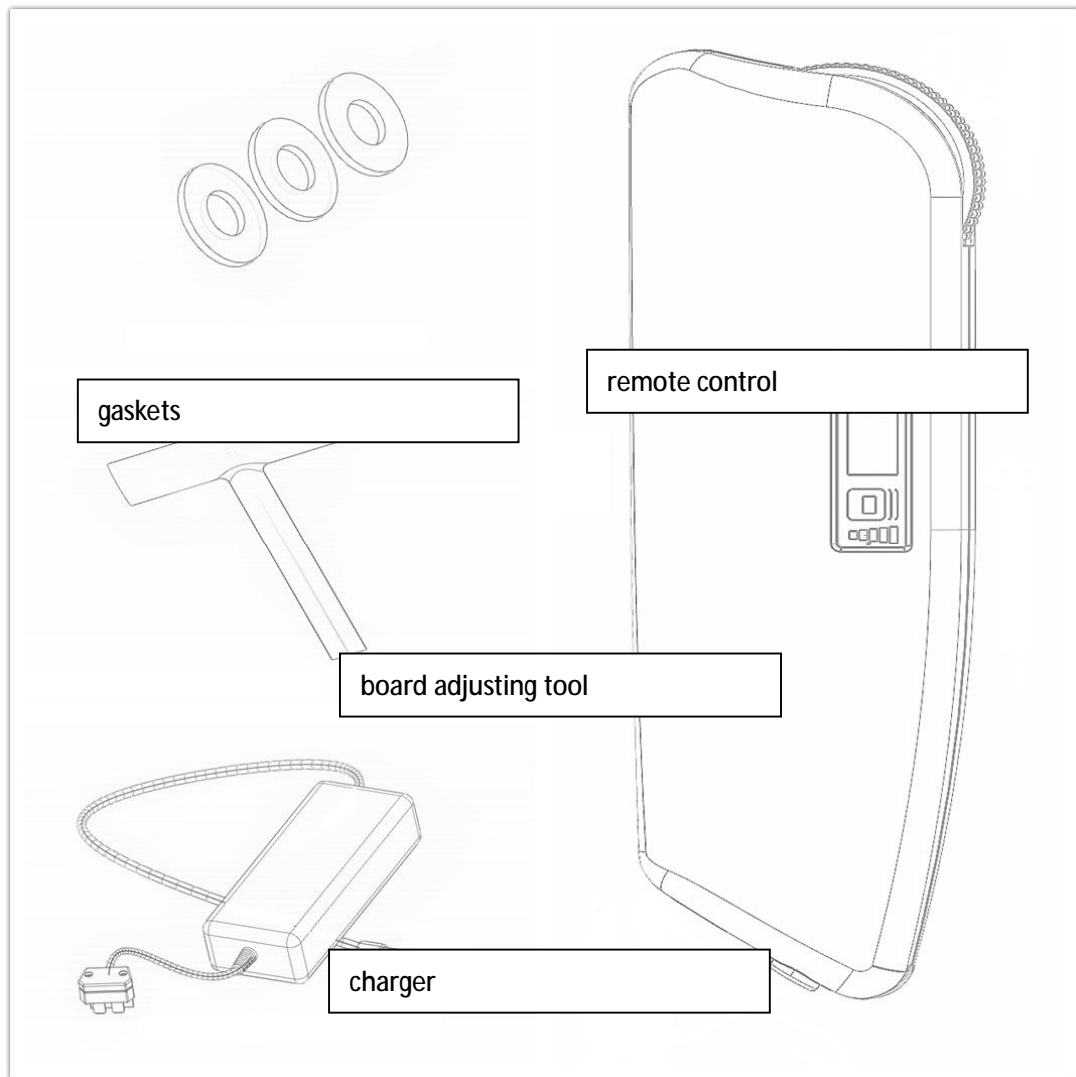
power battery



power wheel&suspension parts



connector



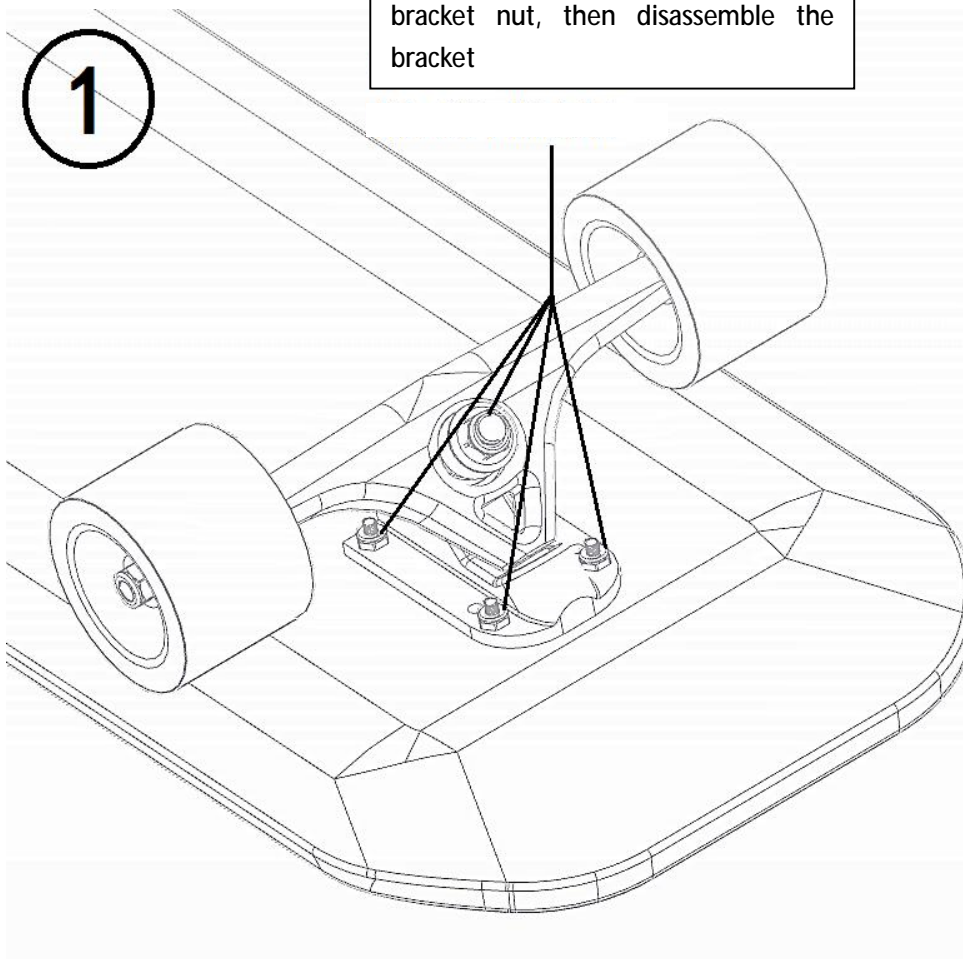
## Installation and instructions for use

### Option 1

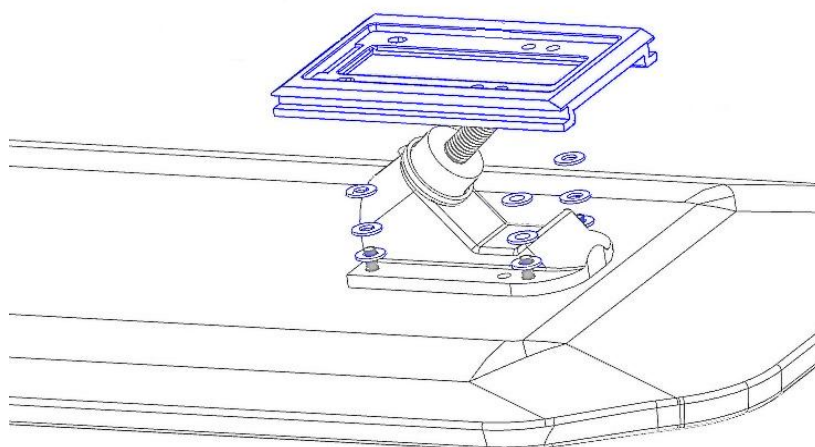
Please install the connector on the abutment seat of board before using this product.

If the front and rear directions of user's board are different, please install the connector on the rear direction of board.

Unscrew four screw nuts and one bracket nut, then disassemble the bracket

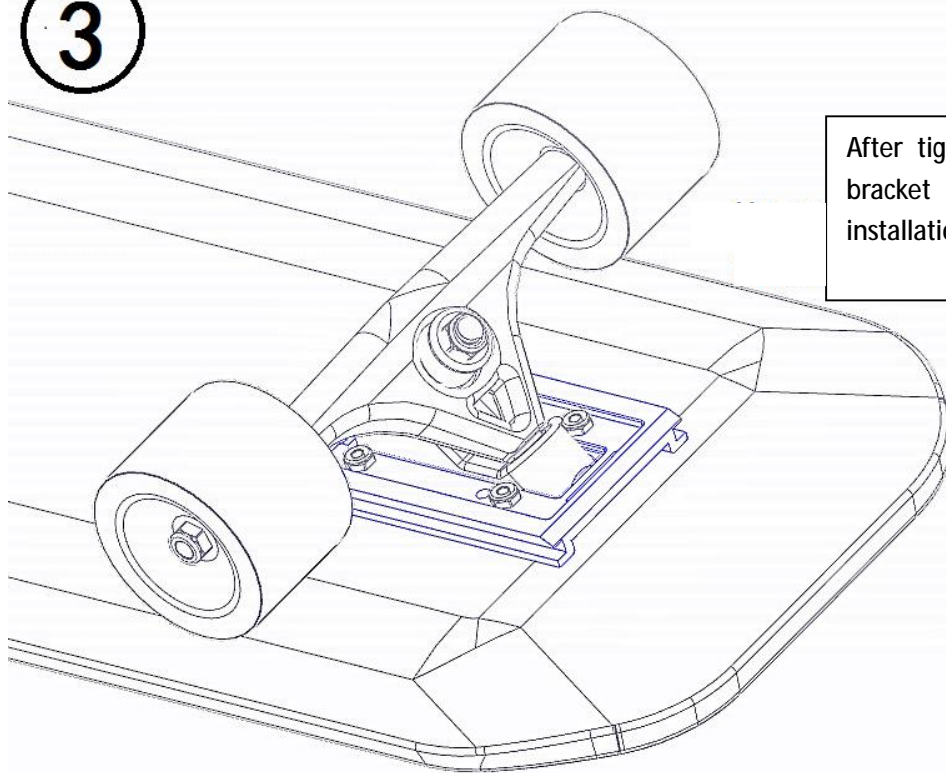


2



Put in the connector, you can put in some gaskets according to the board type in order to adjust the connector height. The connector shall be as parallel with the board as possible. Then tighten the nuts.

3

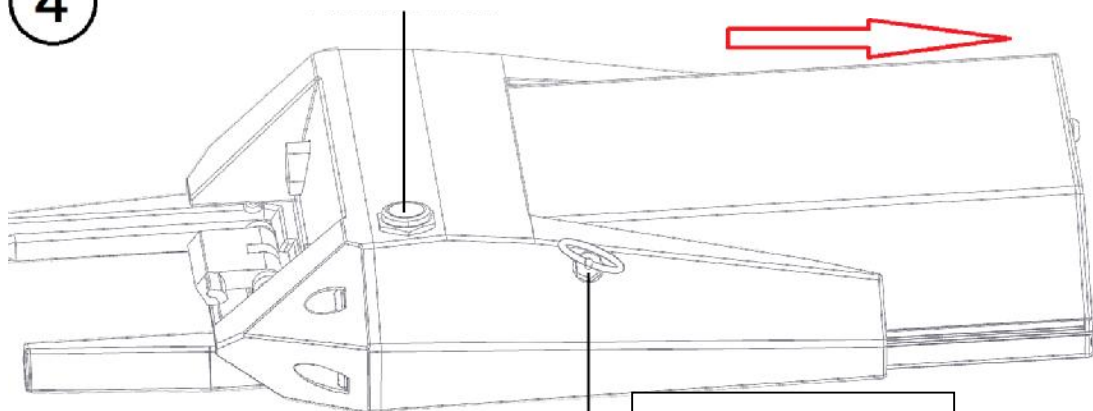


After tightened the bracket nut, the installation finished,

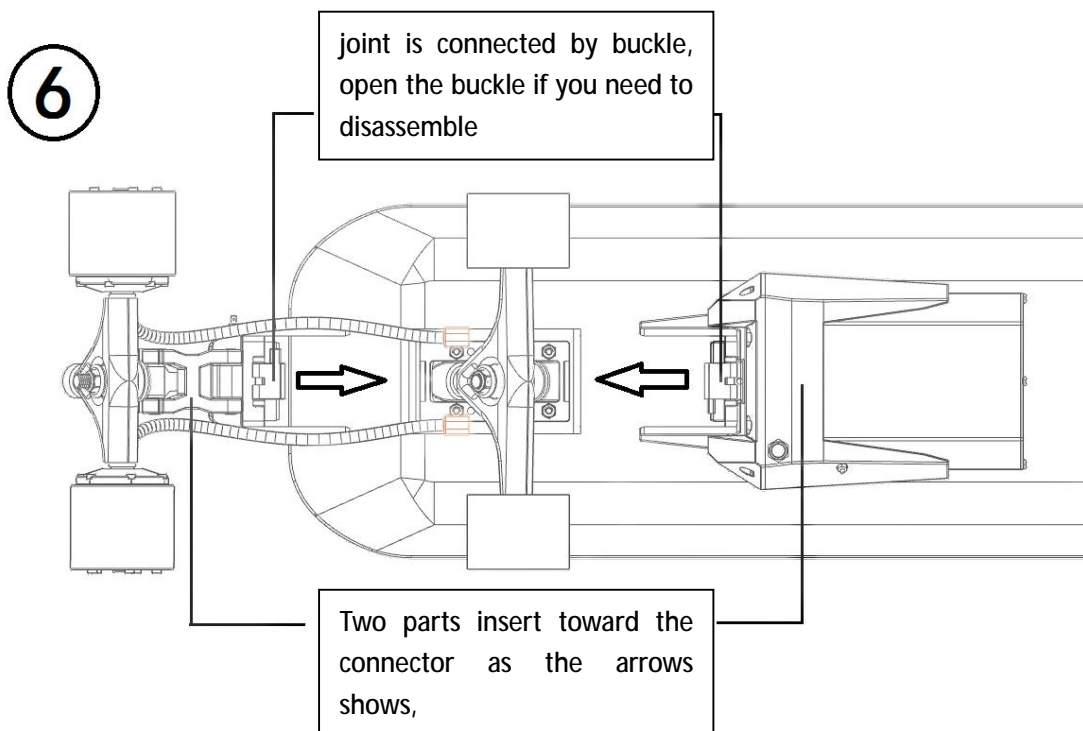
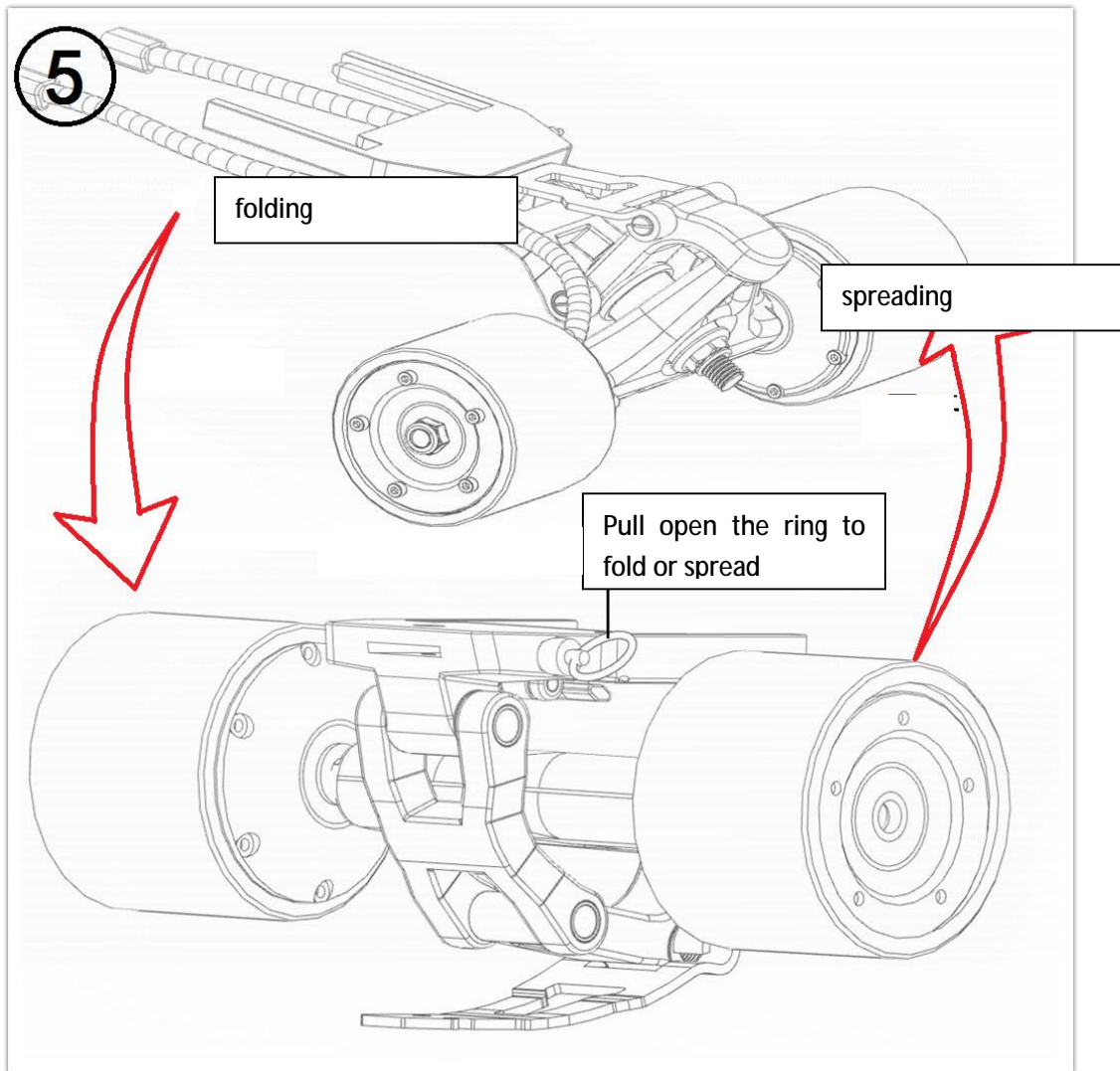
On/off the power by long press

Pull out the battery from this direction

4

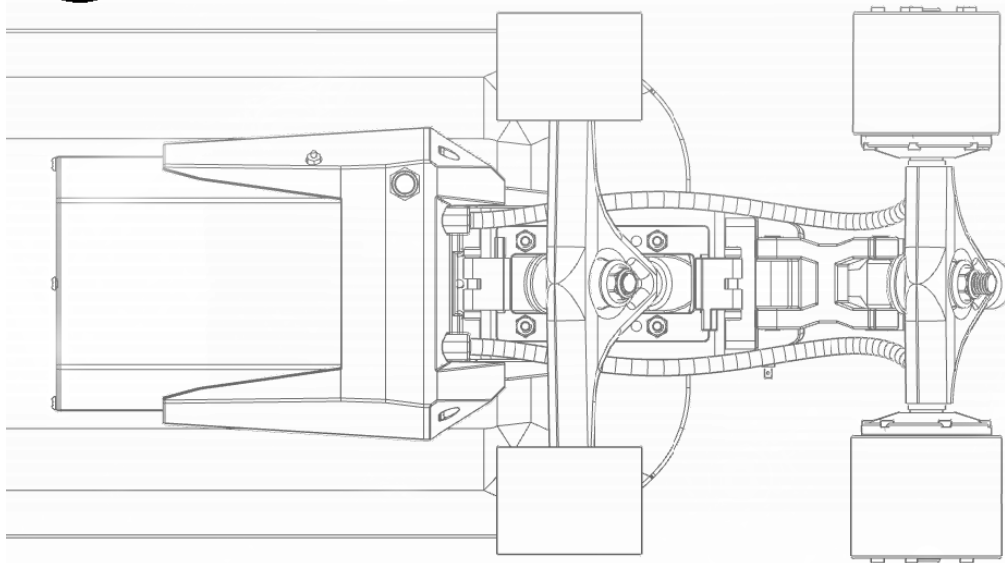


The anti-off ring shall be pull opened before replacing the battery



7

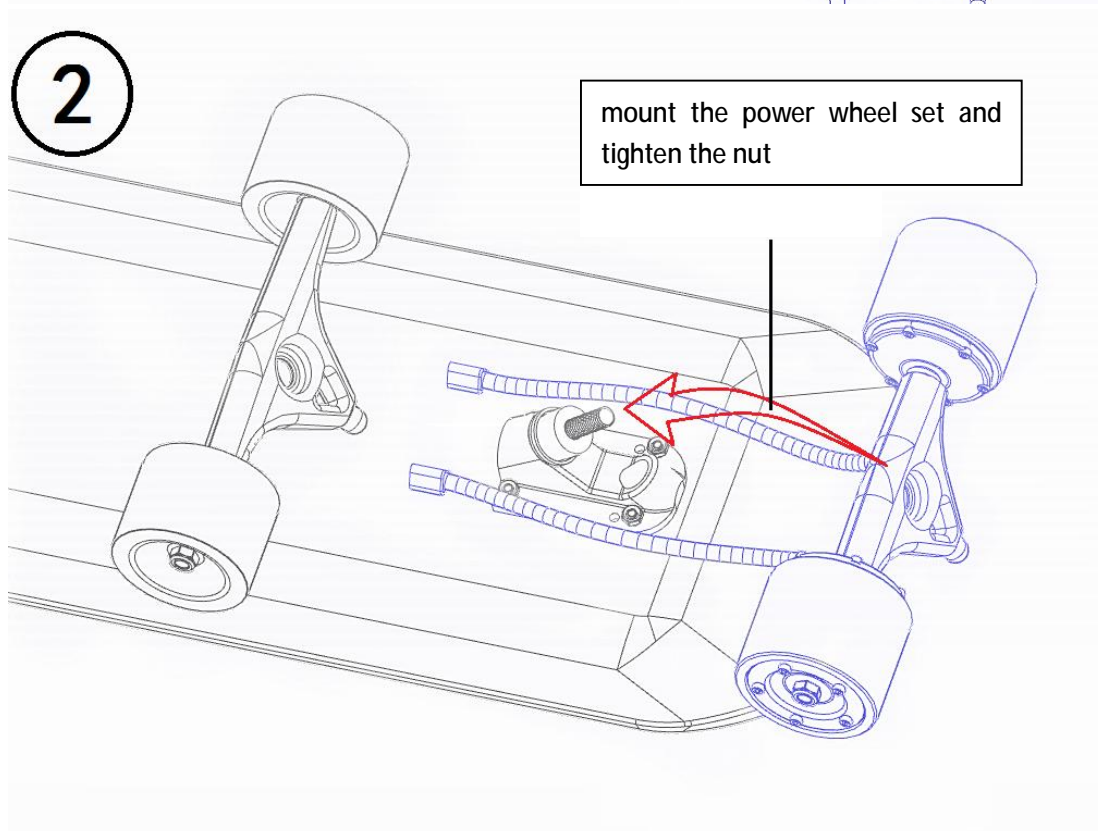
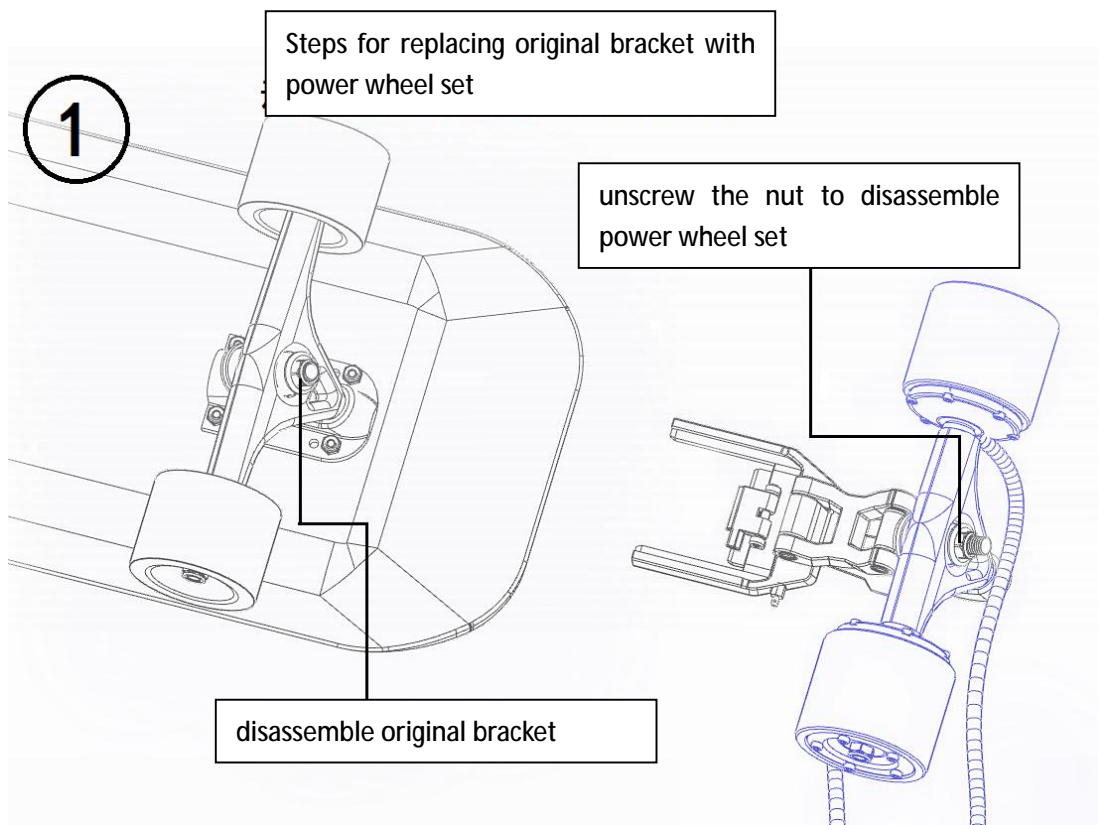
Assembly completed



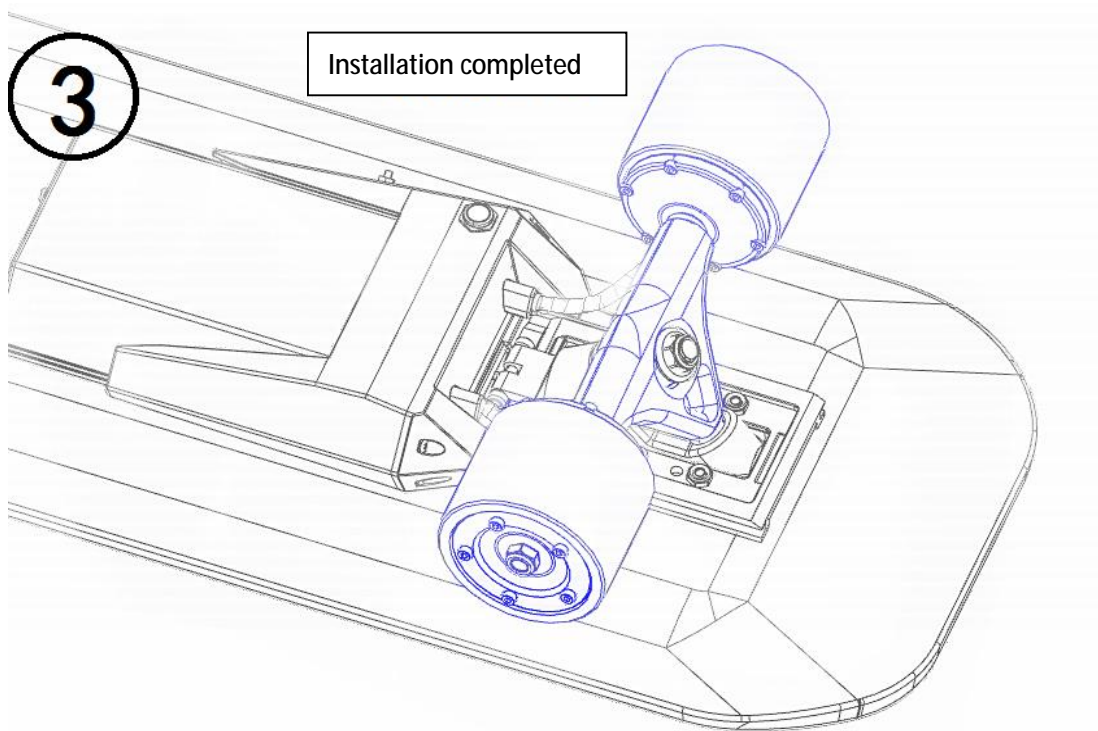
## Option 2

Use the power wheel bracket of FUNING BOARD to replace original bracket, thus it becomes a traditional four-wheel electric skateboard which batteries can be replaced. The appearance can be more concise and the weight is lighter.





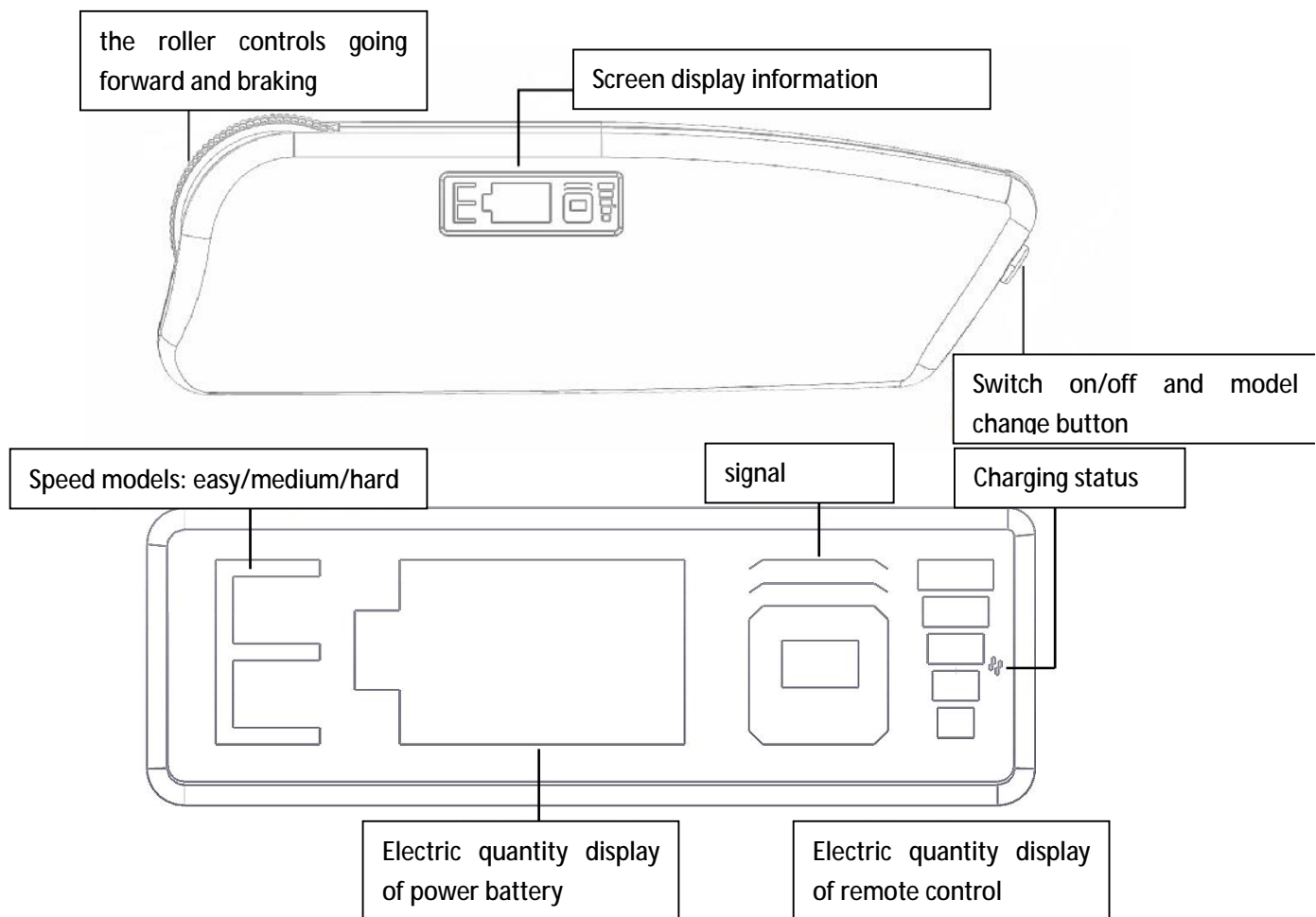




## Remote control

Overview of battery and charging: the remote control of FUNING BOARD works on 2.4Ghz frequency channel. It has runaway safeguard, when the remote control loses its signal connection with the device, the board will brake gradually. The built in 500mAh battery can be charged and used repeated. The charging interface of remote control is Android interface, so the cell phone charger can be used to charging the remote control. The current shall be less than 2A.

Switch on/off and frequency matching: Long press the switch for three seconds, then it can be switched on or off. After the remote control and the battery opened, they should be close to each other for 20 seconds in order to match the frequency.



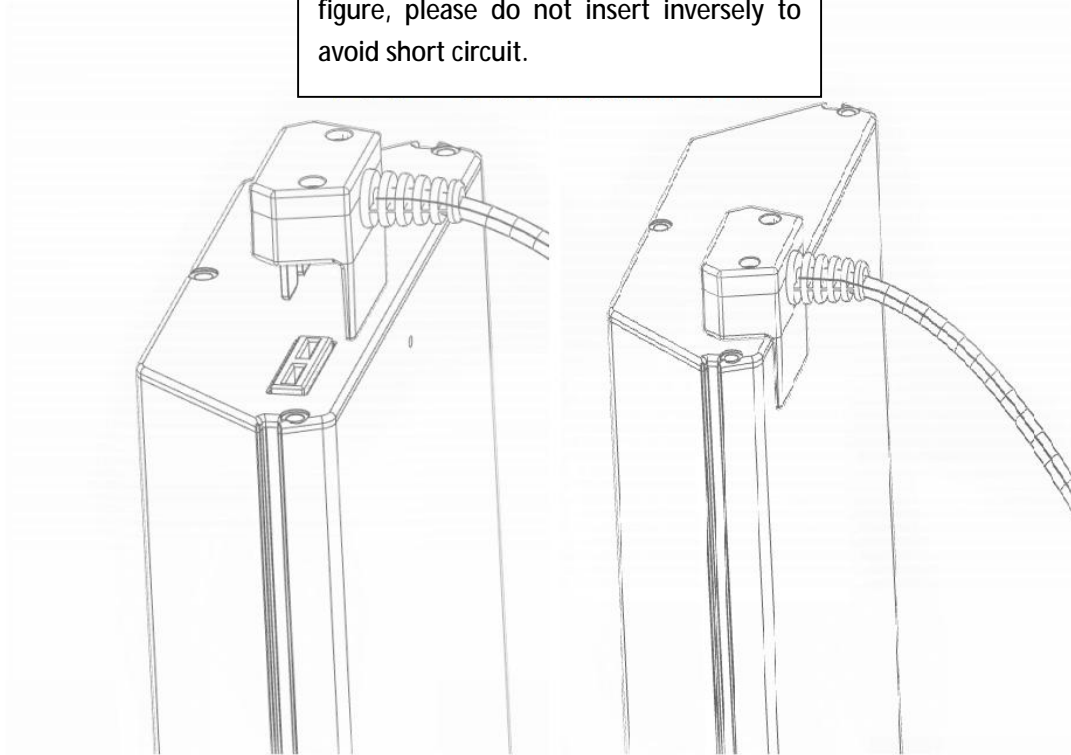
## power battery

**Battery summary:** This power battery consists of 18 LG18650 cells, with a built in power protection system. The total capability is 7500 mAh, voltage is 22.2V. The power battery must be charged with specified charger provided by FUNING official, there is a convex cover beneath the charger interface, please connect it with power battery with correct method.

**Turn on/off the battery:** Long press the round button on the cover of power battery more than three seconds to turn on it. Short press once and then long press the button more than three seconds to turn off it. The red LED at the out ring of round button lights up means the battery turned on, otherwise, the battery is turn off.

**Notice for low temperature using:** It is not recommended to use the battery under 0°C. The capability and cursing distance can be affected under low temperature.

Please follow the connection and charging method of power battery charger in the figure, please do not insert inversely to avoid short circuit.



**FCC Caution:**

This device complies with part 15 of the FCC Rules. Operation is subject to the following two conditions: (1) This device may not cause harmful interference, and (2) this device must accept any interference received, including interference that may cause undesired operation.

Any Changes or modifications not expressly approved by the party responsible for compliance could void the user's authority to operate the equipment.

**Note:** This equipment has been tested and found to comply with the limits for a Class B digital device, pursuant to part 15 of the FCC Rules. These limits are designed to provide reasonable protection against harmful interference in a residential installation. This equipment generates uses and can radiate radio frequency energy and, if not installed and used in accordance with the instructions, may cause harmful interference to radio communications. However, there is no guarantee that interference will not occur in a particular installation. If this equipment does cause harmful interference to radio or television reception, which can be determined by turning the equipment off and on, the user is encouraged to try to correct the interference by one or more of the following measures:

- Reorient or relocate the receiving antenna.
- Increase the separation between the equipment and receiver.
- Connect the equipment into an outlet on a circuit different from that to which the receiver is connected.
- Consult the dealer or an experienced radio/TV technician for help.