

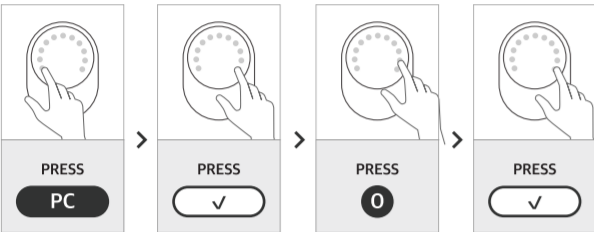
# Programming Guide

## OVAl Programming Guide

P : Programming Code

Program Menu	Instruction	Program Menu	Instruction
Initiating	P > ✓ > 0 >	Add Key Fob	P > ✓ > 13 > ✓ > Key fob no. (01-50) > ✓ > Key Fob Tag > ✓
Change Programming Code (Default: 0000)	P > ✓ > 4 > ✓ > New Programming Code > ✓	Delete Key Fob	P > ✓ > 14 > ✓ > Key fob no. (01-50) > ✓
Add User Code	P > ✓ > 1 > ✓ > New User Code > ✓	Delete # Key Fob	P > ✓ > 15 > ✓
Delete User Code	P > ✓ > 2 > ✓ > User Code > ✓	Mobile Key Install	P > ✓ > 000 > ✓ > APP Setting mode On
Delete All User Code	P > ✓ > 3 > ✓	Delete # Mobile Key	P > ✓ > 333 > ✓
User Code On / Off	P > ✓ > 8 > ✓	Door lock Bluetooth On/Off (Default: On)	P > ✓ > 111 > ✓
Auto-Locking On / Off	P > ✓ > 5 > ✓	Door lock Easy Setting Mode	R Button * 2 times
Auto-Locking Time Set (Default: Off)	P > ✓ > 6 > ✓ > Time (05-99sec) > ✓	Door lock Easy Reset	R (5sec)
Button Sound On / Off (Default: On)	P > ✓ > 7 > ✓	Door lock Multi-Reset Setting	PC > ✓ > 999 >
Temporary Code	P > ✓ > 9 > ✓ > Temporary Code > ✓	Door lock Multi-Reset	PC > ✓ > R (5sec)

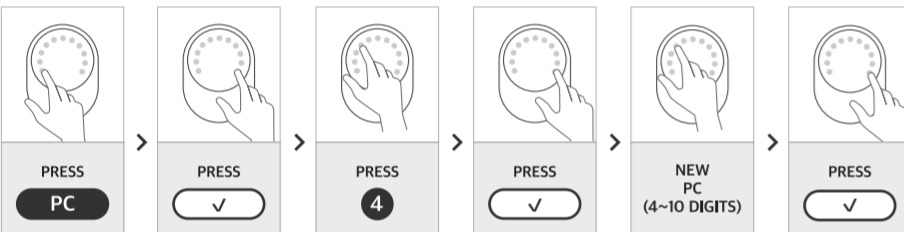
### 1 Initializing



#### REMARK

After you mount the lock on door, you need to set the door open direction. If you skip this step, lock doesn't work properly. Also please proceed this step when you reset the lock.

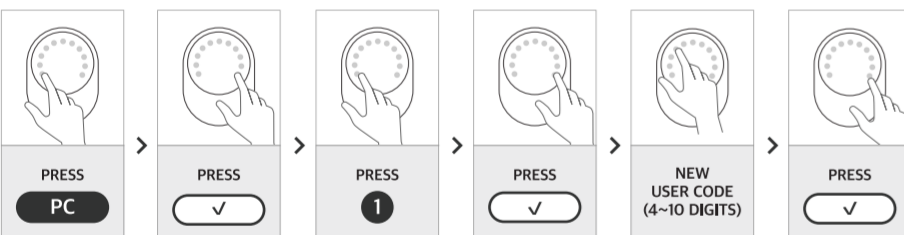
### 2 Programming Code Change



#### REMARK

For the security, please change preset PC 0000. You can use one PC only and it should be 4-10 digits in length.

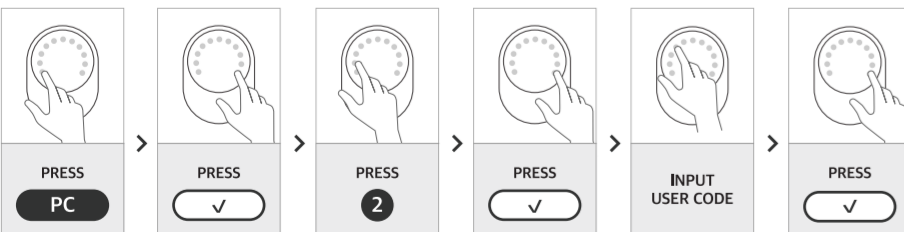
### 3 Add User Code



#### REMARK

Up to 6 sets of User Code can be stored and it should be 4-10 digits in length. Please make sure you delete preset User Code 1234 for security purpose.

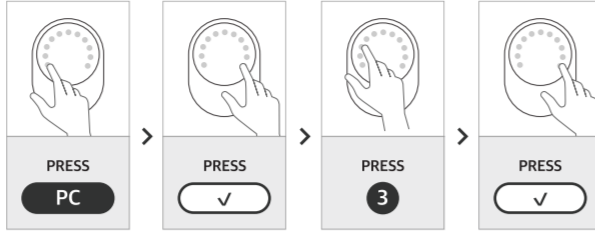
### 4 Delete a User Code



#### REMARK

You can delete stored UC including preset UC 1234. Make sure UC can be stored up to 6 sets.

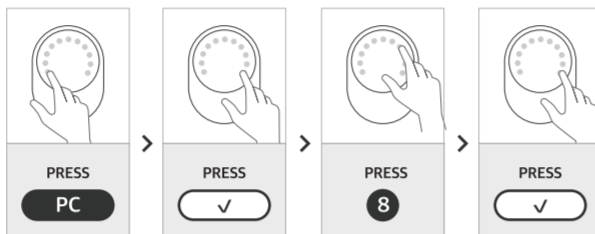
### 5 Delete All User Code at Once



#### REMARK

All User Code can be deleted at once. After you delete all User Code, door lock will not be locked. If you don't want to use User Code, please make User Code Off. (Refer to no.6 instruction)

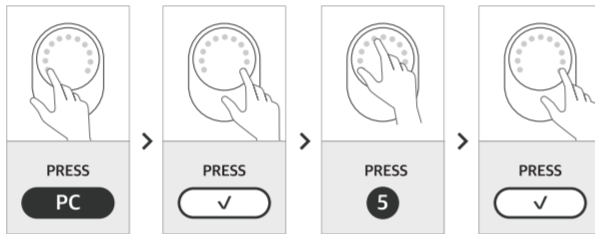
### 6 User Code On/Off



#### REMARK

You can set User Code Off when you want to block opening door by User Code. To turn on again, repeat the same.

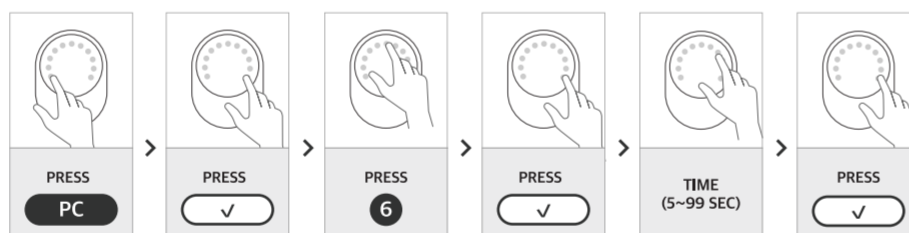
### 7 Auto-Locking On/Off (Default: Off)



#### REMARK

When you set Auto-Locking On, door will be locked automatically after you close the door. To change the Auto-Locking time, refer to no.8 instruction.

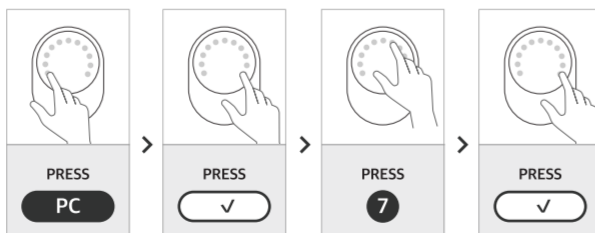
### 8 Auto-Locking Time Set (Default: Off)



#### REMARK

Preset lock time is 30 seconds. You can change lock time between 10-99 seconds.

### 9 Button Sound On/Off (Default: On)

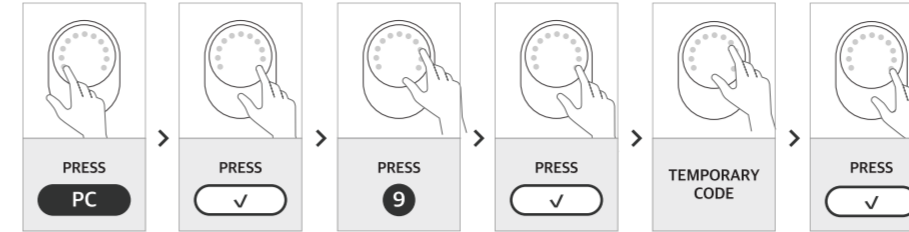


#### REMARK

If you wish to turn off the button sound on door lock, follow the steps above. LED illumination is still functioning even though the sound is off.

ERROR SOUND WILL BE ALARMING REGARDLESS OF SOUND SETTING.

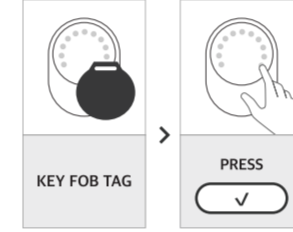
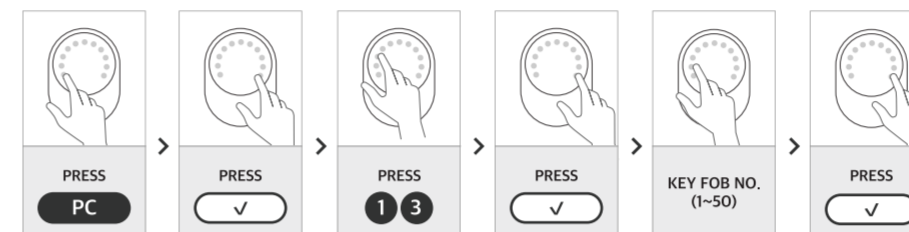
### 10 Temporary Code



#### REMARK

Temporary Code is one time use. Code will be discarded after use automatically. Up to 6 sets of Temporary Code can be stored. Temporary Code should be 4-10 digits in length.

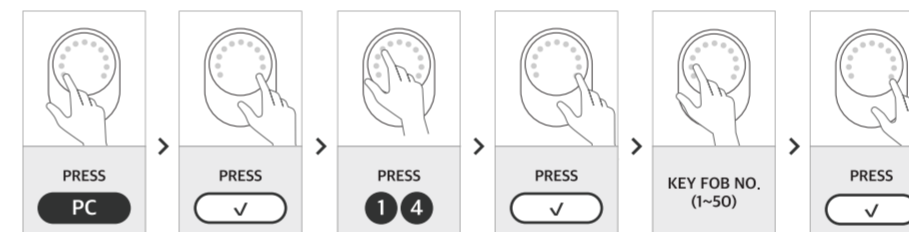
### 11 Add Key Fob



#### REMARK

Give a different number on each Key Fob to register. Key Fob can be added up to 50 Key Fobs.

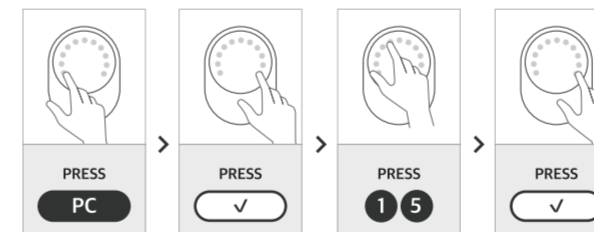
### 12 Delete a Key Fob



#### REMARK

You can delete Key Fob on lock by Key Fob number when you lost Key Fob. You don't need to tap the Key Fob when you delete it.

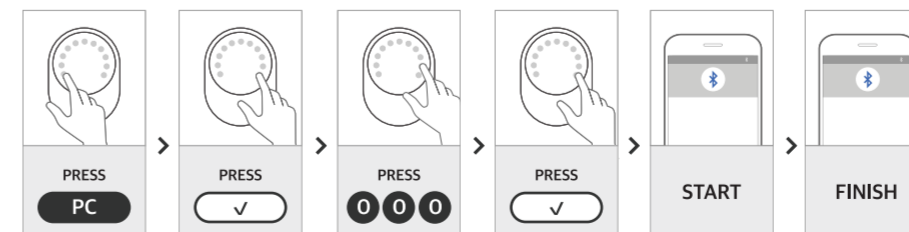
### 13 Delete All Key Fob



#### REMARK

By following above, you can delete all registered Key Fob at once.

### 14 Mobile Key Install (APP)

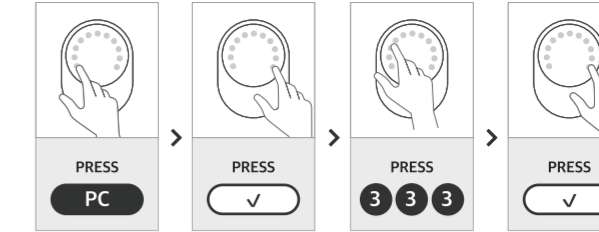


#### REMARK

To get a Mobile Key, door lock should be in setting mode. After make mobile setting mode on door lock, please follow the process from the app.

SMARTPHONE BLUETOOTH MUST BE ALWAYS ON.

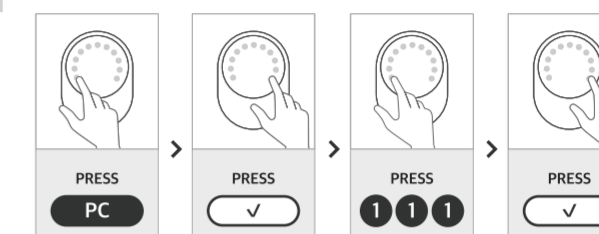
### 15 Delete All Mobile Key



#### REMARK

You can delete all registered Mobile Key on door lock at once. User Code and Access Code will not be affected.

### 16 Door lock Bluetooth On/Off (Default: On)



#### REMARK

Preset Door lock Bluetooth is On. You can turn off the Bluetooth if you want.

DOOR LOCK BLUETOOTH SHOULD BE ON TO USE MOBILE KEY.

### 17 Door lock Easy Setting Mode 18 Door lock Easy Reset



#### REMARK

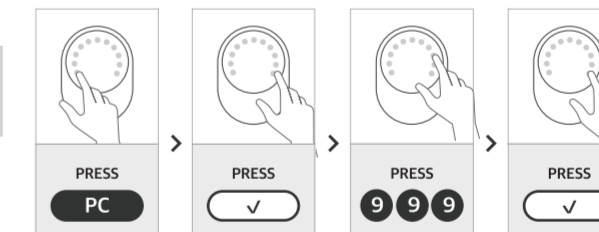
Once you have Mobile Key, you can go into setting mode easily. Please check above.

#### REMARK

To reset the lock, remove the battery cover on Interior part and pick R button for 5 seconds. Once you reset, all stored information such as User Code, Key fob and Mobile Key will be deleted.

AFTER RESET, PLEASE PROCEED THE INITIALIZING AND CHANGE PC AND UC.

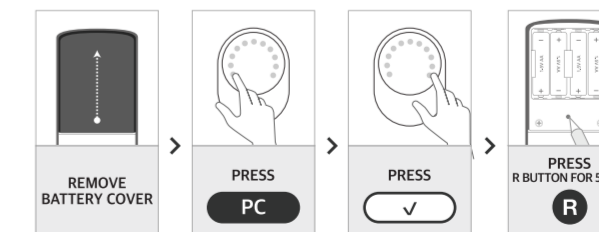
### 19 Door lock Multi-Reset Setting



#### REMARK

To prevent anyone from resetting with R button, set Multi-Reset that enter the PC to reset before press R button. Once you enable this function, you need to put PC whenever you reset the door lock.

### 20 Door lock Multi-Reset



#### REMARK

Once you set the Multi-Reset, you need to put PC before pick R button.

AFTER RESET, PLEASE PROCEED THE INITIALIZING AND CHANGE PC AND UC.

### FCC Information to User

This equipment has been tested and found to comply with the limits for a Class B digital device, pursuant to Part 15 of the FCC Rules. These limits are designed to provide reasonable protection against harmful interference in a residential installation. This equipment generates, uses and can radiate radio frequency energy and, if not installed and used in accordance with the instructions, may cause harmful interference to radio communications. However, there is no guarantee that interference will not occur in a particular installation. If this equipment does cause harmful interference to radio or television reception, which can be determined by turning the equipment off and on, the user is encouraged to try to correct the interference by one of the following measures:

- Reorient or relocate the receiving antenna.
- Increase the separation between the equipment and receiver.
- Connect the equipment into an outlet on a circuit different from that to which the receiver is connected.
- Consult the dealer or an experienced radio/TV technician for help.

### Caution

Modifications not expressly approved by the party responsible for compliance could void the user's authority to operate the equipment.

FCC Compliance Information : This device complies with Part 15 of the FCC Rules. Operation is subject to the following two conditions: (1) This device may not cause harmful interference, and (2) this device must accept any interference received, including interference that may cause undesired operation.

### IMPORTANT NOTE:

#### FCC RF Radiation Exposure Statement:

This equipment complies with FCC RF radiation exposure limits set forth for an uncontrolled environment. This equipment should be installed and operated with a minimum distance of 20 centimeters between the radiator and your body. This transmitter must not be co-located or operating in conjunction with any other antenna or transmitter.