



Chanje LOG

User manual

Yi Jie pure electric van

**For Chanje information
exchange only**



Contents

Overview

Quick guide.....	05
External profile.....	11
Internal profile.....	12

Start and Stop

Door.....	13
Window.....	23
Charger cabin.....	24
Front cabin.....	25
Storage box、Medical box.....	26
Electric step (Optional)	27

Equipment

USB and AUX.....	28
Sunshade.....	29
Card storage box.....	29
Cup holder.....	29
Cigarette lighter、USB charger (12V).....	30
Cargo rear step.....	29

Seat and safety restraint system

Driving area seat.....	31
Seat belt.....	33

Drive

Steering wheel.....	37
Rearview mirror.....	41
One-button start.....	42
Gear.....	43
Dashboard.....	44
Lamp.....	56
Wiper and washer.....	57
switch.....	58
Electronic parking system.....	60
Get the maximum mileage.....	63
Brake.....	69
Reverse camera/radar.....	73

Contents

Use intelligent terminal

Intelligent terminals introduction.....	73
Control interface entrance.....	78
Air conditioning system.....	83
message notification.....	89
Centre control switch.....	91

Charge

Battery information.....	95
Charging instruction.....	97

Maintenance

Vehicle maintenance instruction	103
Tire maintenance, inspection, replacement..	107
Electric vehicle anti-corrosion.....	112
Clean.....	115
Maintenance and service of wheel side Electric-driven axle.....	119
Check and add steering fluid.....	120
Check and add brake fluid.....	122
Check and add coolant.....	123

Check the radiator.....	123
Check and replace the air filter.....	124
Power battery maintenance.....	125
Check electrical component.....	127
Replace the windscreen wiper.....	138
Add the washer fluid	139
Rise up.....	115
Spare parts.....	115

Specification

Identification tag.....	140
Vehicle specification.....	142

Roadside assistance

About roadside assistance.....	146
Transportation instructions.....	160

User Info

Disclaimer.....	162
Report the problem.....	165

Overview—Quickly understand the Changjiang "Yi Jie" electric vehicle

Quickly use vehicle tips

Before you start the vehicle, please confirm that the smart key is inside the vehicle. If the vehicle does not detect the smart key, it will not be able to power on .

Start the vehicle

The first mode :



1. Depress the brake pedal (Stepped on)



Press once

2. Tap a key to start the switch, then the vehicle directly into the ON file ;



3. When the dash instrument interface appears "READY" indication ;
4. Then the vehicle is able to drive.

The second mode:



Press the first time

1. Do not step on the brake pedal, tap the start switch, then the vehicle get into the "ACC" state. You can use the vehicle audio system, cigarette lighter and other equipment .



Press the second time

2. Press the button again to start , the vehicle get into the ON state;



3. When the dash instrument interface appears "READY" indication ;
4. At this time the vehicle has a driving state.

Overview—Quickly understand the Changjiang "Yi Jie" electric vehicle

Driving the vehicle

After the vehicle start

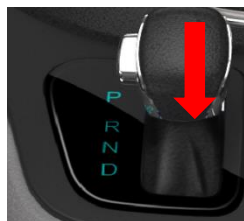
First method



1. Depress the brake pedal.



2. Press the shift lever lock button to load the vehicle into the gear you need.



3. While shift to non-P gear, must keep the brake pedal pressed



4. Release electronic parking brake system by pressing the electronic parking switch.



5. Lift the brake pedal, the vehicle will start to move slowly.



6. Step on the accelerator pedal, the vehicle will start driving, speed based on the degree of step down.

Overview—Quickly understand the Changjiang "Yi Jie" electric vehicle

Drive vehicle

After the vehicle start

Second method :



1. The driver put seat belt on;



2. Depress the brake pedal ;



3. Press the shift lever lock button, put gear into the D or R.



4. Lift the brake pedal .



5. Depress the accelerator pedal, the electronic parking is automatically unlocked ;
6. After the electronic parking is unlocked, the vehicle will start driving, speed based on the degree of step down .

Recommendation: When you parking on a slope, please use manual switch to unlock parking brake.

Overview—Quickly understand the Changjiang "Yi Jie" electric vehicle

Tips
<ol style="list-style-type: none">1. When the brake pedal and throttle are depressed at the same time, the vehicle will have no power output.2. When the vehicle speed exceed 15km / h, the vehicle built-in shift lock will automatically lock and can not be shifted directly. Press the lock button on the shift handle to unlock.

Overview—Quickly understand the Changjiang "Yi Jie" electric vehicle

Important hint

Please pay attention to the warnings about the "WARNING", "CAUTION", "THERETIC Hints, which mark on the vehicle or in this content. Following the warnings to avoid injury or damage.

The type of logo and caution are as follows :

 Warning
In order to avoid personal injury or cause significant damage to the vehicle

Note
In order to avoid failure and other matters must be observed

Tips
Reminders should be aware of the matter

- The pictures provided in this manual are schematic, only be used for reference.
- All information and instructions in this manual are the latest while this edition printed, according the event of product development or upgrades, we may modify the technical characteristics and contents of this manual without notice. If you find that the car you purchased is not consistent with the vehicle user manual, please contact your dealer .
- Please note that this manual applies to the Changjiang "Yi Jie" pure electric whole series, and introduce all the equipment and operations. Your vehicle may be not necessarily equipped all of these devices
- Thank you for choosing the Changjiang electric vehicle. Welcome to provide your valuable comments and suggestions.

Overview—Quickly understand the Changjiang "Yi Jie" electric vehicle

Terms and Conditions



Warning

Precautions for the use of electric vehicle

Please follow the safety regulations in this manual to avoid the occurrence of high voltage accidents, to achieve a safe and comfortable use of the electric vehicle.

Please pay attention to the safety mark on the vehicle

- To avoid personal injury, do not touch high voltage cables (orange) and their connectors.
- Please follow the warning label attached to the high voltage electrical parts.
- Do not disassemble or replace high-voltage electrical components in the front cabin such as motor controllers, DC / DC, chargers and high voltage distribution cabinets.
- In case of emergency, unplug the emergency maintenance switch on the high voltage distribution box with the conditions permitting. please keep the plug in good condition. Do not touch the socket by hand or other no insulated tool.



Warning

- The vehicle is equipped with a power battery pack with high pressure characteristics. if the vehicle break down, please contact the Changjiang electric vehicle authorized service providers. Do not try to repair privately, or you may take the risk of electric shock.

If an accident occurs

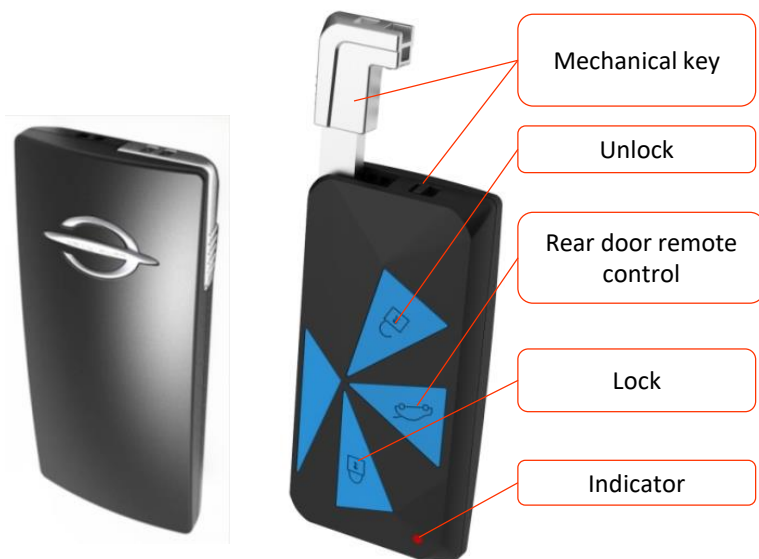
If an emergency occurs, please note the following warning:

- To avoid personal injury, do not touch any high voltage cables and their connectors, as well as high pressure parts.
- Do not touch bare wires.
- Please contact the Changjiang electric vehicle authorized service providers as soon as possible.
- If the battery pack at the bottom of the vehicle is damaged, and there are liquid leaks in some parts of the vehicle, do not touch the liquid. if those liquid accidentally reach your skin or eye, must rinse with water immediately and seek medical attention immediately.
- If the vehicle is in fire, please use the dry powder fire extinguisher on the vehicle.

Open and close—Door

Key

The keys include electronic smart keys and one mechanical keys.



1. Electronic Smart Key—The electronic smart key use for unlocked and locked for all doors and charging doors, operate the door in the distance through the remote control keys, also has emergency alarm and other functions.
2. Mechanical key(Within the electronic smart key)—The door can be unlocked or locked through the keyhole on the door.



Warning

When using a smart key, please following the precautions:

Do not attach anything on the smart key that will cut off the electromagnetic wave (Such as metal seals) 。

Do not knock other objects with smart keys。

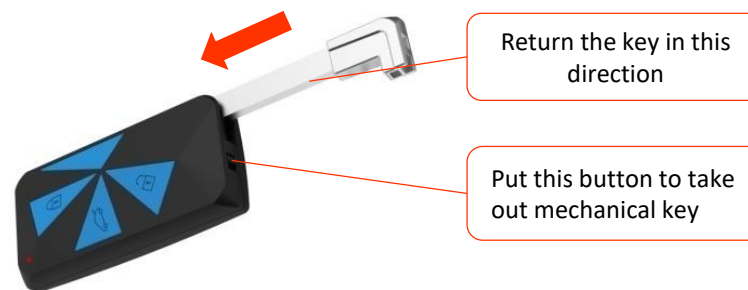
Do not place the key at high temperature area for a long time (Such as the dashboard) 。

Do not immerse the smart key in water or clean it in an ultrasonic scrubber 。

Do not put the smart key together with the radioactive electromagnetic device,such as mobile phones。

Use the mechanical key in the electronic smart key

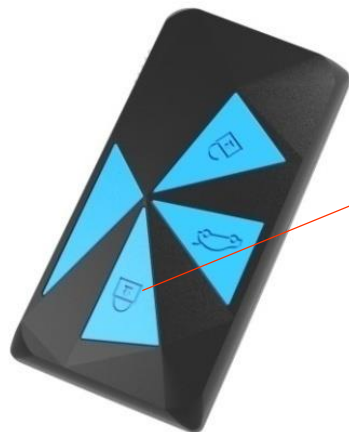
When using a mechanical key in an electronic smart key, pull the release switch as shown in the picture, Then remove the mechanical key . After use, make sure to put it back .



Open and close—Door

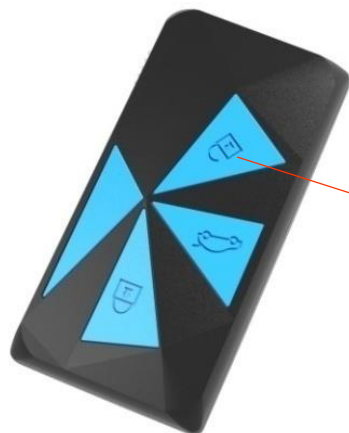
Remote control function

Lock operation



Press this key to lock on

Unlock operation



Press this key to unlock

Normal remote control range is 15 to 20 meters.

While operate lock and unlock, please press the switch slowly and firmly.

The remote control function is only valid when the vehicle power is OFF .

Remote control lock :

Press the lock switch, all door lock at same time except rear door. The turning signal lamp will flash once .

Check that all doors are securely locked .

If any door is not closed properly, the door will unlocked immediately and the turning signal lamp flash twice .

Remote control unlock :

Press the lock switch, all door unlock at same time except rear door. The turning signal lamp will flash twice.



WARNING

This device complies with Part 15 of the FCC Rules. Operation is subject to the following two conditions: (1) this device may not cause harmful interference, and (2) this device must accept any interference received, including interference that may cause undesired operation.

NOTE

Changes or modifications not expressly approved by the party responsible for compliance could void the user's authority to operate the equipment.

This equipment has been tested and found to comply with the limits for a Class B digital device, pursuant to part 15 of the FCC Rules. These limits are designed to provide reasonable protection against harmful interference in a residential installation. This equipment generates uses and can radiate radio frequency energy and, if not installed and used in accordance with the instructions, may cause harmful interference to radio communications. However, there is no guarantee that interference will not occur in a particular installation. If this equipment does cause harmful interference to radio or television reception, which can be determined by turning the equipment off and on, the user is encouraged to try to correct the interference by one or more of the following measures:

- Reorient or relocate the receiving antenna.
- Increase the separation between the equipment and receiver.
- Connect the equipment into an outlet on a circuit different from that to which the receiver is connected.
- Consult the dealer or an experienced radio/TV technician for help.



FCC ID: 2AM7K-AE120402

Open and close—Door

If the electronic smart key can not be operated within a normal distance, or if the indicator on the key is dim or off:

Please check whether there is interference from the near radio station or airport radio transmitter.

The battery in the electronic battery keys may be low power, please replace the original battery with the same specifications of the new battery.

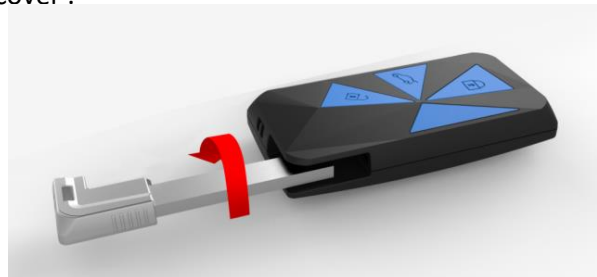
Replace the key battery

step :

1. Pull down the release switch and remove the mechanical key .



2. Turn the mechanical key to open the electronic smart key cover .



3. Remove the battery .



4. Place the battery positive (+) face up in the box , put the cover back tightly, then put the mechanical key back into the smart key.

After replacing the battery, check whether the electric smart key is working properly. If the electronic smart key is not normal operating, please contact the Changjiang electric vehicle authorized service providers .

Open and close—Door

Note

- ◆ Do not modify the battery cover to avoid any failure
- ◆ Make sure that the positive and negative are installed correctly
- ◆ Do not replace the battery with a wet hand, the water will cause rust
- ◆ Do not touch or move any part of the electronic smart key, otherwise it will affect the correct operation.
- ◆ When replacing an electronic smart key battery, note that the key must keep away from dusty or greasy.
- ◆ Tightly cover the electronic smart key cover

If you lost the electronic smart key, please contact the Changjiang electric vehicle authorized service provider as soon as possible to avoid theft or accident happen.

Keyless entry and one button start function



Put the smart key in your pocket or bag and do not have to take out, Press the **micro switch** on the door handle to unlock or lock the door , Except the rear door, all doors will unlock or lock together. Start the vehicle by pressing the start button .

Enter function——Lock and lock the door.

Start function——The vehicle power is switched between OFF, ACC and ON.

- The detection distance of the vehicle to the smart key is about 1.5m .
- If the key is close to the outside detection antenna (door handle) within 10cm may not be detected normally.
- When the door and the window glass are closed, if place the key in the front of the drive seat or the instrument panel area. The system will not respond to the keyless entry request function, you can not unlock the door through the door handle button.
- All doors are equipped with keyless entry and the system only responds to the keyless entry function on the current side of key.
- In response to a micro-switch for 1 second does not respond to the second micro-switch action.
- In response to the keyless entry, the red indicator on the key will flash.

Open and close—Door

The keyless entry and commissioning system may not work properly in the following cases .

- When the key battery is low power. The combination dashboard will indicate low power on the key.
- When there is a facility to release strong electromagnetic waves nearby, such as TV towers, power stations, radio stations, Unicom signal towers, mobile towers .
- When the smart key is carried with a communication device, such as a two-way radio communication device or a mobile phone.
- When the smart key is in contact with or covered by a metal object.
- Quickly operate the door handle .
- The smart key is too close to the door handle.
- When someone else operates wireless remote control on a nearby car.
- Smart keys are in the vicinity of high-voltage equipment or noise-generating equipment .

If one button start system is faulty, start the vehicle, the red or green light on the button will continue to flash.

If the keyless entry and one button start function has system failure that can not run properly, please contact the Changjiang electric vehicle authorized service providers. Be sure to carry all the smart keys, which is necessary to repair this system.

Note
◆ Do not arbitrarily change the transmission frequency, increase the transmission power(Including additional installation of the transmit frequency amplifier),Do not connect the antenna or switch to other transmit antennas

Open and close—Door

Emergency start function

When the smart key low power or space environment meet electromagnetic interference, the normal keyless start operation may not detect the smart key.



In this case the system can be integrated in the start button reader to find the smart key.

Place the smart key on the back or front with the start button parallel to less than 2CM, depress the brake pedal, the start button green light on, then move the smart key, press the start button, the vehicle starts .



Saving smart key battery power

If the smart key to receive long-term strong electromagnetic waves, the battery power will be quickly depleted. The smart key must be keep 1 meter away the following equipment.

- TV
- personal computer
- Wireless telephone charger
- Lighthouse
- Fluorescent lamp

Steering wheel lock function

When using the wireless remote control, the micro switch lock or unlock the door, the steering wheel will lock.

While the key inside the vehicle, normal start, the steering wheel will automatically unlock . If the green indicator on the start button flashes quickly, means the unlock failed. At this time, please lightly turn the steering wheel, if the steering lock still can not unlock, means the steering lock has failure. Please ask the Changjiang electric vehicle authorized service providers to check the vehicle .

Open and close—Door

Door opening and closing operation

There are five methods to open and close the door lock:

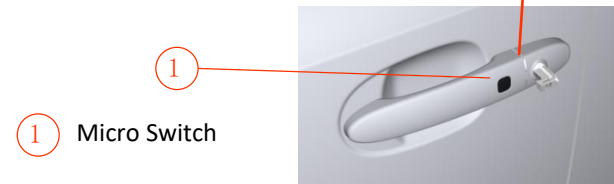
1. Through unlock, lock button on the smart key.
2. Through the micro switch on the door handle, keyless open and close the door.
3. With a mechanical key on the smart key, mechanical open and close door.
4. Through the lock button inside the door, open and close the door.
5. Through the driver side glass lift center control switch to open and close door.

Open and close operation instructions :

1. When the whole vehicle unlock, the turn signal flashes twice.
2. When the whole vehicle lock the turn signal flashes once.

Driver door and front passenger door

Lock and unlock with mechanical key



Insert the key into the driver's side door keyhole and turning.

Lock: Turn the key counterclockwise.

Unlock : Turn the key clockwise.

Except rear door, all other door will lock or unlocked together.

Open and close—Door

Use the outside door handle



After unlocking, pull the door handle to open.

All outside door handle has keyless entry function, as long as you keep the smart key by your side, just need to press the micro switch to open the door.

Outside door handle also has lock function, do not left the key in the car, then just tap the micro switch on the handle, the vehicle can be locked.

Use the door to open the handle

The driver door or the front passenger side door can be opened from inside at any time, even it is locked.



① Lock button

② Opening handle on the door

Unlock: Pull the lock button ①

Lock: Press the lock button ①

Pulling the handle after unlock, the door open. ②

Note: The lock button on the driver door can controlled all other door except rear door. But the lock button on the front passenger door and sliding door, only control itself.

Open and close—Door

Slide door

Open / close the slide door from the outside



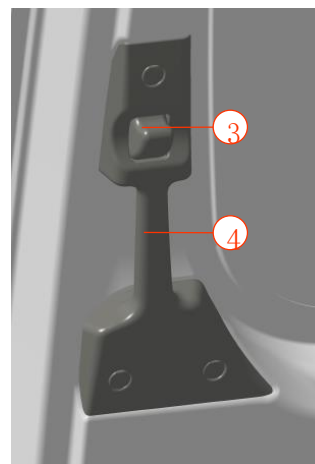
① Door handle ② Slide door

Open: Pull the outside door handle, ① Open the sliding door; Hold the handle ①, slide the door to the rear of the vehicle till the limited position (The maximum position while opened).

Close: Hold the outside door handle ①, pull the slide door away from the limit position. Hold the door outside the handle to push forward the sliding door until the door closes tightly.

Open the door from the car

Do not press the button while the vehicle is moving ③, avoid opening the sliding door.



③ Button ④ Door handle

Open : Push the button ③ Open the sliding door ; Hold the handle and ④ the sliding door to the limit position (The maximum position while opened).

Close : Hold the handle ④ push the slide door forward firmly until it closes tightly .

Open and close—Door

Rear door

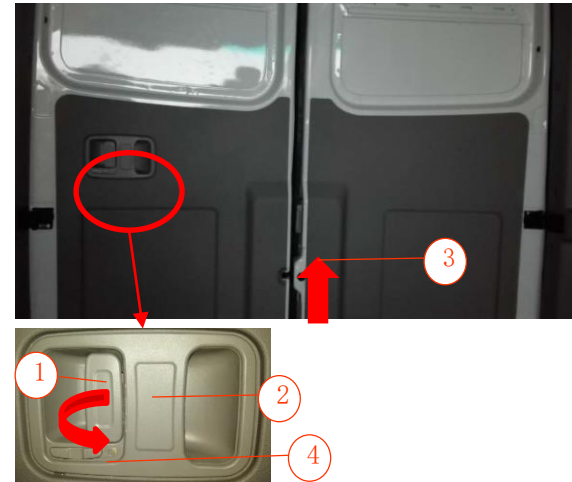


- 1) Use the mechanical key to unlock, pull the handle to open the rear door
- 2) Use the remote control, press the unlock button on the smart key, hold 2 second to unlock the rear door, then operate the handle to open.
- 3) As long as the smart key by your side, press the micro switch on the door handle, rear door can be locked and unlocked;

Note : After close the door, try the door handle to confirm that it closed tightly;

Also can use the micro switch directly, to lock the vehicle.

Rear door inside open/close



- | | |
|--------------------|---------------|
| ① Door open switch | ② Door handle |
| ③ Door lock handle | ④ Lock switch |

Open the door : Pull up the door switch on the right side of the rear door ①, pull out, then open the right side. Press the door lock handle ③, The driver side rear door open.

Close : Push the driver side rear door first, and then use the door handle ② to close the right side rear door.

Locked : Toggle right ④, Lock; Toggle to the left ④, Unlock.

Tips

Please follow the above method strictly to operate rear door. Change the process will cause the driver side rear door paint scratch and other issues.

Open and close—Door

Anti-theft system

To prevent the vehicle from being stolen, if the vehicle is in an anti-theft alert state, any door open or the driver door unlock (Use a mechanical key or lock with a lock button in the car), the system will control all turning signal flashing alarm .

Set the system

1. Vehicle power into the OFF file
2. All passengers off the vehicle
3. Close all doors
4. Lock all doors through the remote control or door handle buttons.

When all doors locked, all turn signal flash once, the system gets into the anti-theft alert state.

5. Make sure that all doors are locked before leave the vehicle.

Because unlock from the inside will activate the alarm, nobody should stay in the vehicle before set system.

Alarm activation

The system will flash the alarm by controlling all turn signal in the following cases:

The vehicle in the anti-theft alert state, any door open or driver door mechanical unlock (Use a mechanical key or lock button inside the vehicle)

Vehicles in the anti-theft alert state, the vehicle power get into the ACC or ON.

Alarm release

The alarm will be release by the following method:

Use the smart key to unlock the door

Use the micro switch on the door handle to unlock the door.

Driving—Button start

① One button start ("POWER" switch)



Button start corresponding to the vehicle power supply, its backlight color status shown in the table below.

The initial position of the vehicle power supply	Shift lever stalls	Whether the brake pedal is depressed	Press the switch of Auto start after the vehicle power stalls	the switch of Auto start backlight color
OFF	P gear	Step down	ON (The vehicle enters the READY state)	Green
		No step down	ACC	Red
ACC	P gear	Step down	ON (The vehicle enters the READY state)	Green
		No step down	ON (The vehicle enters the READY state)	Red
ON	P gear	No step down	OFF	Off

Attention

If the indicator light on the button flashing red or green, means the vehicle is faulty, can not power on, please contact the Changjiang electric vehicle authorized service provider.

Tips

When the vehicle can not normally power down as normal, please press start button more than 5 second, the vehicle will force to OFF.

Intelligent Terminal Usage Information—Introduction to Intelligent Terminals

Intelligent terminal (10.4 inch touch screen)

Instructions for use

1. During driving, the driver should not watch films and televisions, operating the system is strictly prohibited, this is to guarantee the traffic safety and avoid the distraction from driving. If the above can not be complied, the Company will not be held responsible for all the consequences arising therefrom.
2. When driving on the rugged road, the violent bumps may lead to sound jump phenomenon.
3. The volume should be kept to an appropriate level while driving, so as to be able to feel the road and vehicle conditions and to ensure safe driving.
4. Keep this product away from moisture and dust. Do not expose this product to water, which can cause electric shock, fire or other damage.
5. If the ambient temperature is too high or too low, this will adversely affect the normal function of this product. If the vehicle is not activated, or it is exposed under the sunlight for too long or is kept in a cold place where the temperature is too low, the intelligent terminal may work abnormally. Once the temperature inside the car comes back to the normal range, intelligent terminal will restore to the normal function. If it can not be restored, please contact the local Changjiang electric vehicle authorized service providers for maintenance.
6. If the intelligent terminal system fails in power supply, or no image, or no sound, or it is in an abnormal condition such as unknown objects inside, water, smoke, or bad smell,

Please make sure not to open or disassemble the product, and immediately contact the local Changjiang electric vehicle authorized service providers.
7. To avoid the damage to the touch screen, be sure to use your finger (special calibration can use the stylus) to touch the screen. Do not drag or press the screen hard, otherwise it may cause scratches or damage.
8. Keep the touch screen away from direct sunlight, if not, the touch screen will not work normally because of high temperature.
9. To clean the dust on the touch screen, please first press the start engine key to switch vehicle power to the OFF, and then use a soft dry cloth to wipe. Wipe the touch screen carefully, do not scratch the surface. Do not use irritating or abrasive chemical cleaners.
10. Please firmly fix the USB, AUX and other audio and video equipment while driving, do not let them dropped in the vehicle so as to prevent them from slipping to the brake pedal or accelerator pedal and cause trouble to traffic safety.
11. Intelligent terminal bears 3G network and phone call functions, and for the knowledge of the specific fares, please consult China Unicom customer service. And in case of other problems, please contact the Hangzhou Changjiang electric vehicle authorized service providers.