

LOOPD Badge

LOOPD Badge V3.0

How to Set Up the LOOPD Badge

Thanks again for using the LOOPD Platform for your event. We believe that both you and your attendees will benefit from using the Badge & seeing crystal-clear ROI.

Attendees don't have to worry about losing business cards, or do any manual data entry later, and you don't have to scan and swipe attendee Badges.

They enjoy a hassle-free VIP experience while you can focus on what you do best: curating an amazing event.

What is a LOOPD Badge? 03

How do people use the LOOPD Badge to exchange contact info? 06

How does the LOOPD Badge record event history? 08

The LOOPD Badge is an award-winning, bi-directional sensor that attendees, speakers & exhibitors wear during your event.

At only 1.42" long, 1.42" wide, and 0.22 in tall, each LOOPD Badge weighs less than 5 grams and has a battery life of two months. It's the epitome of small but mighty.

Compatible with both iOS & Android, you can rest assured that all of your attendees will have no trouble getting up to speed.

Each LOOPD Badge has Bluetooth LE connectivity, which offers several advantages over Near Field Communication (NFC) and Radio Frequency Identification (RFID) technologies. Unlike other options on the market, it is more

affordable, mobile-compatible, & supremely scalable. In addition, Bluetooth LE enables event planners like yourself to collect data about what attendees did at your event in a passive, non-intrusive way.

At a practical level, the LOOPD Badge can help each attendee do the following —

- Exchange digital business cards
- Collect marketing materials
- Check into and out of sessions passively
- Record the entire “journey” of the event

You might still be wondering, “Why do I need the LOOPD Badge? Can't people just use the smartphone app?” We're glad you asked.

We designed the LOOPD Badge to be sleek, comfortable, and most important of all, natural. It augments the app's functionality in several distinct ways —

01

The LOOPD Badge delivers complete control and security. Attendees transfer their contact info only when they want to.

02

People often forget to charge their phones, and the LOOPD Badge works even if an attendee's phone dies.

03

Everyone at your event will have the LOOPD Badge. This means that Reese with her iPhone won't have any trouble network with Sage on his Android device.

04

The LOOPD Badge works reliably even when tons of people on tons of devices are sucking up the bandwidth. This reliability helps to protect the user experience for everyone involved.

05

The LOOPD Badge is discreet, comfortable, and easy to use.

People won't have to dig their phones out of pockets, bags, or the unknown abyss.

How do attendees use the LOOPD Badge to exchange contact info?

STEP I.

Reese and Sage both press buttons on their LOOPD Badges.

STEP II.

They wait for the orange light to blink.

STEP III.

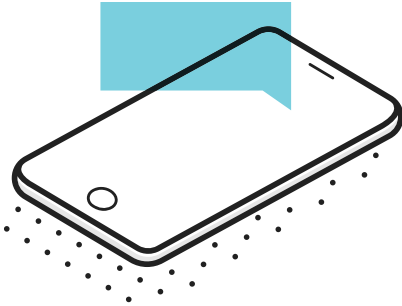
They hold their LOOPD Badges within six inches of one another.

STEP IV.

They wait for the green light to blink. The green light signifies that the two have successfully exchanged contact information.

STEP V.

Reese and Sage also receive confirmation in the event app.



There's very little room for "user error." For that reason, the LOOPD Badge isn't intrusive. It doesn't affect how attendees already act at events but instead gives Reese and Sage more control over their interactions.

Worth noting is that Reese can choose to not share her information. The contact exchange happens only if both attendees press the button & bring their badges close together. Each party exercises full control over the exchange.

But once they decide to share their info, using the LOOPD Badge takes less time than pulling out their business cards.

How does the LOOPD Badge record event history?

With the LOOPD Badge, attendees don't have to worry about remembering what they did at your event. Their LOOPD Badges automatically record their complete event history — sessions attended, exhibitors visited, contacts met, and other areas of interest.

All recording for attendees happens automatically inside the app.

The LOOPD App then organizes this event history and enables attendees to sort it by connection, time, and location. They can also view session information and speaker multimedia, receive contact and company update alerts, and check out exhibitor information & marketing collateral.

It can be challenging for attendees to make use of what they learn at events — a lot of stuff is flying at them! — so this history provides a convenient way to jog their memories and remember to follow up with new contacts.

Will attendees be tracked everywhere?

You designate points of interest in your floor plan: rooms, exhibitors, and significant areas. The LOOPD team then places LOOPD Hubs at those locations so that those “sensors” can capture movements only at their specific areas in the venue.

By cross-referencing your schedule and time signatures, the LOOPD Hubs and the LOOPD App also track attendee's presence in specific rooms during specific sessions. Each LOOPD Hub tracks attendees inside a radius of 30', but LOOPD Hubs do NOT track attendees after they stop outside of that proximity.



Xero Case Study - 10,000 Connections & 2,500 CPE Credits

A quick case study might help you understand how all this functionality looks out "in the wild." A QuickBooks alternative, Xero's accounting software enables their customers to manage invoicing, bank reconciliation, bookkeeping.

The National Association of State Boards of Accountancy (NASBA) had recently introduced a new requirement: "A participant's self-certification of attendance at a group program alone is not sufficient. The CPE provider must employ additional attendance monitoring procedures."

Xero partnered with us for their XeroCon Denver event, and we were able to solve one very specific business challenge related to their continuing professional education (CPE) program.

Group CPE training programs must now provide not only proof of date and time of attendance for each certified public accountant and bookkeeper, but they must also record attendance time in twenty-minute intervals. These "nano-credits" replace the one full credit for a session of fifty minutes or more.

To get the full CPE credit, accounting professionals must be able to show prove they have earned multiple nano-credits.

How did the LOOPD team rise to the challenge?

We mounted modified Bluetooth/Wi-Fi LOOPD Hubs at the entrance to each session room. We then synced up our entire platform (Hubs, Wi-Fi networks, servers, Badges, and apps) so that those LOOPD Hubs scanned each LOOPD Badge every millisecond.

And as for Xero, they were able to offer the world's first passive and non-intrusive monitoring of CPE training at a three-day business conference. Our platform recorded over 260,000 data points, and as a result, Xero was able to award 2,500 CPE credits.

None of the accounting professionals had to wait in line to check in. The experience was frustration-free for them. They could focus more on networking: 10,000 new connections, to be precise.

To say that we were thrilled with these outcomes would be an understatement.

With the LOOPD Badge, your attendees can swap contact info without business cards.

And as you will soon witness firsthand, the virtual exchange is quite easy. Armed with new contacts & their event history, your attendees can derive maximum value from your event. Their ROI is yours too. You do want people to come back next year, right?

We hope that you take full advantage of the many capabilities of the LOOPD Platform to make your event richer and your life easier.

FCC Warning:

This equipment has been tested and found to comply with the limits for a Class B digital device, pursuant to part 15 of the FCC Rules. These limits are designed to provide reasonable protection against harmful interference in a residential installation. This equipment generates, uses and can radiate radio frequency energy and, if not installed and used in accordance with the instructions, may cause harmful interference to radio communications. However, there is no guarantee that interference will not occur in a particular installation.

If this equipment does cause harmful interference to radio or television reception, which can be determined by turning the equipment off and on, the user is encouraged to try to correct the interference by one or more of the following measures:

- o Reorient or relocate the receiving antenna.
- o Increase the separation between the equipment and receiver.
- o Connect the equipment into an outlet on a circuit different from that to which the receiver is connected.
- o Consult the dealer or an experienced radio/TV technician for help.

Caution: Any changes or modifications to this device not explicitly approved by manufacturer could void your authority to operate this equipment.

This device complies with part 15 of the FCC Rules. Operation is subject to the following two conditions: (1) This device may not cause harmful interference, and (2) this device must accept any interference received, including interference that may cause undesired operation.

The device has been evaluated to meet general RF exposure requirement. The device can be used in portable exposure condition without restriction.