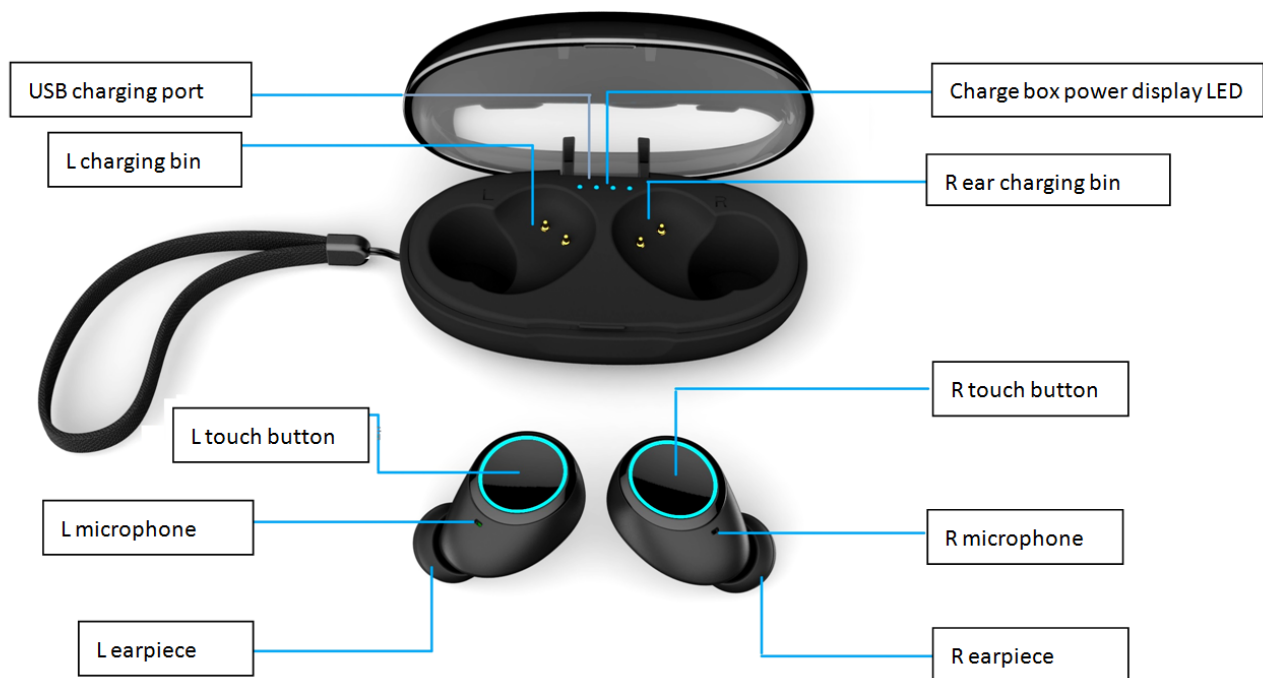


# **Wireless bluetooth headset user's manual**

**(Automatic team version)**

## Overview



## Wireless bluetooth headset function operation

**1.Power On:** Automatically turn on - the headset is removed from the charging box, the headset will automatically turn on, the blue light flashes 3 times and is accompanied by a "boot" tone.

**Manual start-up** - press and hold the MFB button (touch button) for about 3 seconds, the blue light flashes 3 times and is accompanied by a "boot" tone.

**2.To the ear interconnection:** the two headphones will be automatically connected after the headset L and the headset R are turned on separately, accompanied by the "left channel" and "right channel" prompts. When the two headphones are connected, the two headphones will change from the original blue to a pair of headphones, and the red and red lights will flash alternately. At this time, the headset enters the connection mode with the mobile phone.

**3.Pair with mobile phone:** Open "Settings---Bluetooth--- Click to connect "TS009" in the phone. After the phone is connected to the earphone, the red and blue lights of the ear will flash alternately and the blue light will flash separately, accompanied by "Connected "Beep.

**4.Music play/pause:** Connect to the phone to open the player. Press the FMB button (touch button) once to play the music. Repeat the operation to pause the song.

**5.Play the next song:** When the headset is in the state of playing the song, double-click the R "MFB" button (touch button), the next song in the phone will be played automatically.

**6.Play the last song:** Double-click the L "MFB" button (touch button) while the song is playing, it will automatically play the next song in the phone.

**7.Answer the call:** Click the FMB button (touch key) once in the incoming call state.

**8.Hang up the phone:** Click the FMB button (touch key) once during the call.

**9.End number redial:** When the mobile phone is connected to the Bluetooth headset in standby mode, double-click the FMB button (touch key).

**10.Reject the call:** Double-click the FMB button (touch button) in the incoming call state.

**11.To cancel dialing:** Short press the MFB button (touch key) in the dialing state.

**12.Siri/voice group:** Press and hold for 1.5 seconds in standby mode or listen to the song. After you hear the “beep” sound, you will activate the Siri (iphone) voice assistant (Android system) of the mobile phone. After hearing the activation tone of the phone, you can speak the voice command.

**13Automatic connection:** After the headset is connected with the mobile phone, and the Bluetooth of the mobile phone is turned on, the Bluetooth automatically connects back to Bluetooth when the headset is turned off and turned off; when the headset and the mobile phone leave the signal distance, the communication will be disconnected, and the camera will return within 3 minutes. Bluetooth will automatically connect back within about 5 meters.

**14.Low battery alarm:** When the earphone is lower than 20%, it will flash red light for 30 seconds, and there will be a “low battery” tone for 5 minutes.

**15.Low power shutdown:** When the headset is lower than the normal working power, the headset will automatically shut down, the red light flashes and is accompanied by a “shutdown” tone.

**16.Shutdown:** Manual Shutdown - Press and hold the MFB button for about 5 seconds, the red flashes 3 times and there is a prompt "shutdown" tone.

(The headset will automatically shut down when it is not connected to the phone and other Bluetooth devices within 3 minutes)

## How to charge the headset battery

1. Put the headphones L and R into the charging and “L”, “R” corresponding charging, and then close the cover of the charging box to enter the charging mode.

2. When the headset is charging The indicator light of the headset is red. The headset is fully charged and the headset indicator is off.

3.While charging the headset, the charging box indicator will show the power of the charging box, 100% power “●●●●”75% Battery “●●●” 50% Battery “●●” 25% Battery “●”

## . Safety Precautions

Use headphones when driving, please follow the regulations of your country and region.

Keep all equipment and accessories out of reach of children's pets. Ingestion of parts may result in suffocation and serious consequences.

Do not place the device too high or too low (under 0 degrees Celsius or above 45 degrees Celsius). Extreme temperatures can cause deformation of the device, reduce the charging capacity of the device, and shorten the service life.

Do not get the device wet and the liquid can cause serious damage to the device. Do not operate the device with wet hands. Damage caused by water ingress is not covered by the warranty.

If you listen to high volume for a long time, it may damage your hearing. It is recommended to use the lowest volume of the call and the song.

#### FCC Warning Statement

Changes or modifications not expressly approved by the party responsible for compliance could void the user's authority to operate the equipment. This equipment has been tested and found to comply with the limits for a Class B digital device, pursuant to Part 15 of the FCC Rules. These limits are designed to provide reasonable protection against harmful interference in a residential installation. This equipment generates uses and can radiate radio frequency energy and, if not installed and used in accordance with the instructions, may cause harmful interference to radio communications. However, there is no guarantee that interference will not occur in a particular installation. If this equipment does cause harmful interference to radio or television reception, which can be determined by turning the equipment off and on, the user is encouraged to try to correct the interference by one or more of the following measures:

- - Reorient or relocate the receiving antenna.
- - Increase the separation between the equipment and receiver.
- - Connect the equipment into an outlet on a circuit different from that to which the receiver is connected.
- - Consult the dealer or an experienced radio/TV technician for help.

This device complies with part 15 of the FCC Rules. Operation is subject to the following two conditions: (1) This device may not cause harmful interference, and (2) this device must accept any interference received, including interference that may cause undesired operation.