

SPECIFICATION

SHEET FOR APPROVAL

(Revision: R: A1)

	CUSTOMER(客户名称)	新大陆	
	CS P/N(客户机种)	N950-NA	
	PART NAME(品名)	LTE	
	FREQUENCY(频率)	620-900MHz; 1710-2700MHz。	
	ZTX NO.(物料编号)	E.03.00801	
	DATE(日期)	2022-10-28	

CUSTOMER			
QA CHECKED	ME CHECKED	RF CHECKED	MANAGER CHECKED

Remark(备注):

Sign(客户确认签字盖章):

ZHONG TIAN XUN TECHNOLOGY CO., LTD				
MANAGER CHECKED	MANAGER CHECKED	ME CHECKED	RF CHECKED	LISTER
		胡小良	王而栋	



福州中天迅通信技术有限公司

ZHONGTIAN XUN Communication Technology Co.,Ltd.

总部地址:深圳市宝安区石岩街道石龙大道 34 号 (原腾达工业园) 邮编: 518000

福州地址: 福建省福州市仓山区金山工业区桔园洲园 45 号楼 2 层 SC02 单元 邮编: 350000

电话: 0591-83582969

传真: 0591-83583660

<http://www.chinaztx.com>

ANTENNA SPECIFICATION

CUS P/N : N950-NA LTE

ApplicationDate:Oct,28,2022

Rev: R:A1

ZTX P/N : N950-NA LTE

Editor:

Page 2 of 15

Revision history

版本	日期	状态
A1	2022-10-28	规格书制定。



ANTENNA SPECIFICATION

CUS P/N : N950-NA LTE

ApplicationDate:Oct,28,2022

Rev: R:A1

ZTX P/N : N950-NA LTE

Editor:

Page 3 of 15

Index

	<i>Revision history</i>	
1.	<i>Test equipment</i>	4
2.	<i>Antenna test data</i>	5~12
2-1	<i>VSWR</i>	5
2-2	<i>Antenna passive test</i>	6~8
2-3	<i>3D radiation drawing</i>	9
2-4	<i>Active test data</i>	10
2-5	<i>Matching circuit</i>	11
2-6	<i>Environment treatment</i>	12
3.	<i>Mechanical Specification</i>	13
4.	<i>Size report</i>	14
5.	<i>Salt-Spray test</i>	14
6.	<i>Environment Characteristic</i>	14
7.	<i>The packing way</i>	15



ANTENNA SPECIFICATION

CUS P/N : N950-NA LTE

ApplicationDate:Oct,28,2022

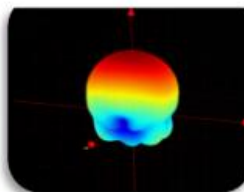
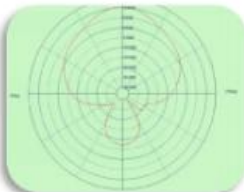
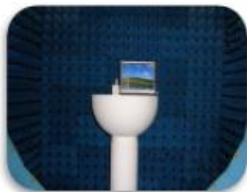
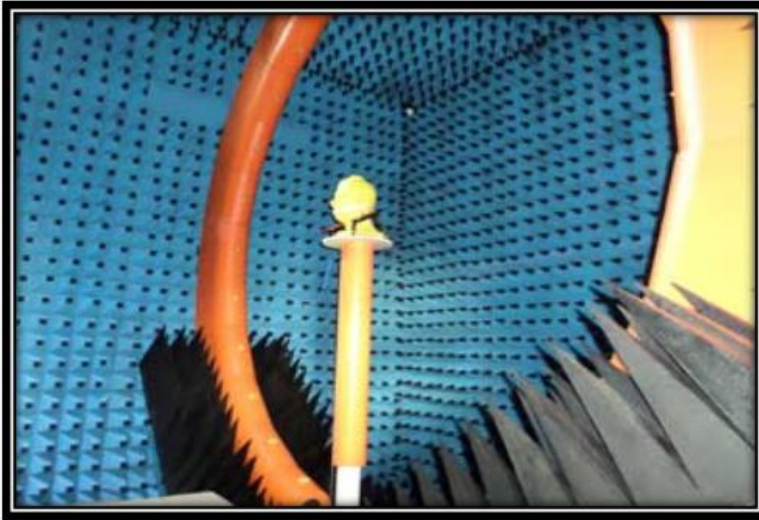
Rev: R:A1

ZTX P/N : N950-NA LTE

Editor:

Page 4 of 15

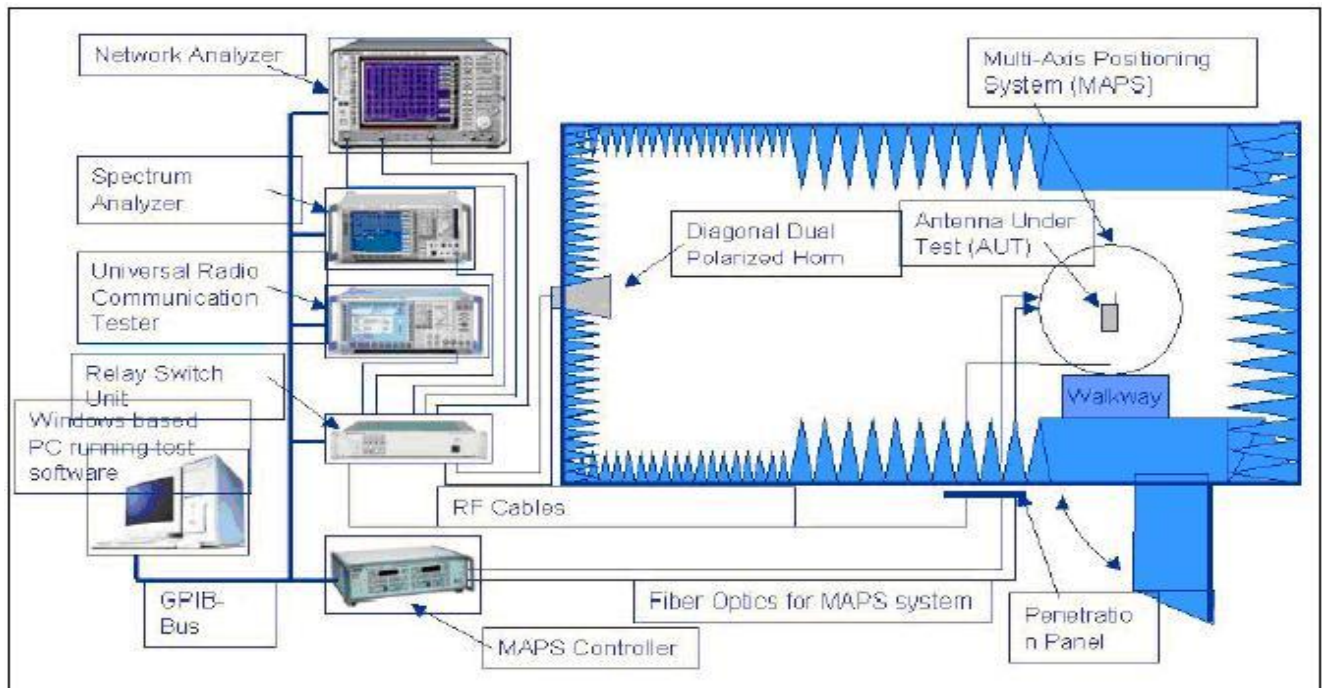
1. Test equipment



Owned 6 microwave dark room, equipped 2 sets world leading France Satimo SG24 OTA certification test systems (one in SHENZHEN, another one in Shanghai), ETS OTA Standard test system, Blue test reverberation test system which is High repeatability, high accuracy and high resolution. It can quickly provide accurate test reports, fully meet the CITA standards.

Testing range:

Support active, passive testing of
GSM/CDMA/WCDMA/TD-
SCDMA/LTE/WIFI/WLAN/WiMax/BT
/GPS/MIMO/UWB within 0.4-6G.



ANTENNA SPECIFICATION

CUS P/N : N950-NA LTE

ApplicationDate:Oct,28,2022

Rev: R:A1

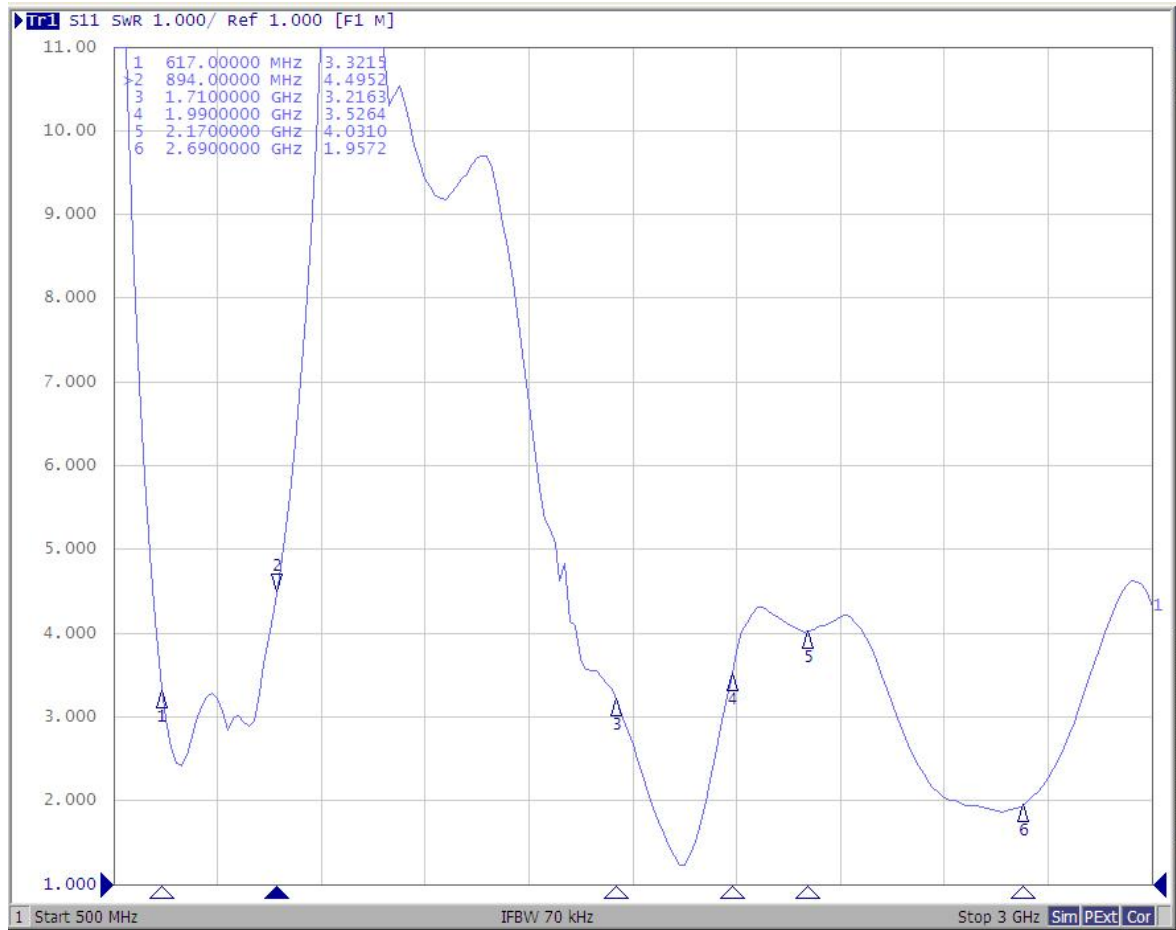
ZTX P/N : N950-NA LTE

Editor:

Page 5 of 15

2. Antenna test data

2-1 VSWR



ANTENNA SPECIFICATION

CUS P/N : N950-NA LTE

ApplicationDate:Oct,28,2022

Rev: R:A1

ZTX P/N : N950-NA LTE

Editor:

Page 6 of 15

2-2 Antenna passive test

chNo	Freq (MHz)	Gain (dBi)	Efficiency_Pcent
1	620	-4.9773	14.5007
2	640	-4.18865	15.028
3	660	-3.84149	20.87853
4	680	-3.2414	23.08599
5	700	-2.79528	24.88973
6	720	-2.76656	25.09394
7	740	-3.42999	21.28015
8	760	-3.86703	21.03494
9	780	-2.18938	29.3218
10	800	-2.39698	26.04764
11	820	-2.52121	27.02926
12	840	-2.70156	25.88464
13	860	-3.59354	21.19827
14	880	-4.79887	15.992
15	900	-5.04352	14.40935
16	1710	-0.99806	29.77563
17	1730	0.087775	31.63993
18	1750	0.319691	34.75537
19	1770	1.283314	38.66245



ANTENNA SPECIFICATION

CUS P/N : N950-NA LTE

ApplicationDate:Oct,28,2022

Rev: R:A1

ZTX P/N : N950-NA LTE

Editor:

Page 7 of 15

chNo	Freq (MHz)	Gain (dBi)	Efficiency_Pcent
20	1790	1.374582	42.35415
21	1810	1.767872	47.90845
22	1830	2.32547	54.96901
23	1850	2.292977	51.67089
24	1870	1.995162	50.77008
25	1890	2.440776	50.15034
26	1910	2.156108	43.75043
27	1930	2.376685	41.35716
28	1950	2.190802	38.84841
29	1970	2.146336	36.18654
30	1990	2.080722	33.93368
31	2010	1.500116	31.72133
32	2030	0.991754	29.51171
33	2050	0.812989	27.34838
34	2070	0.5988	26.37239
35	2090	0.584967	25.45413
36	2110	0.682195	24.37267
37	2130	0.622831	24.03579
38	2150	0.107201	22.55184
39	2170	-0.20786	22.51546



ANTENNA SPECIFICATION

CUS P/N : N950-NA LTE

ApplicationDate:Oct,28,2022

Rev: R:A1

ZTX P/N : N950-NA LTE

Editor:

Page 8 of 15

chNo	Freq (MHz)	Gain (dBi)	Efficiency_Pcent
40	2300	0.313031	26.28085
41	2320	0.502155	27.79123
42	2340	0.048683	27.52146
43	2360	0.110174	29.1119
44	2380	0.890125	31.32515
45	2400	1.761555	35.18172
46	2500	2.572519	39.33694
47	2520	3.03513	40.72656
48	2540	2.95284	39.37133
49	2560	2.652021	39.91151
50	2580	2.199348	38.8748
51	2600	1.79459	39.1476
52	2620	1.273758	37.96482
53	2640	0.964999	37.72681
54	2660	1.106159	38.03758
55	2680	0.92426	37.26225
56	2700	1.313007	38.41205



ANTENNA SPECIFICATION

CUS P/N : N950-NA LTE

ApplicationDate:Oct,28,2022

Rev: R:A1

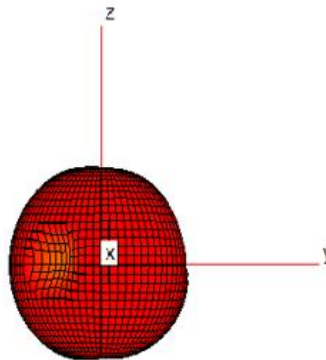
ZTX P/N : N950-NA LTE

Editor:

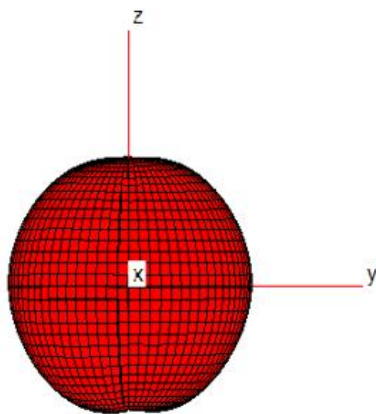
Page 9 of 15

2-3 3D radiation drawing

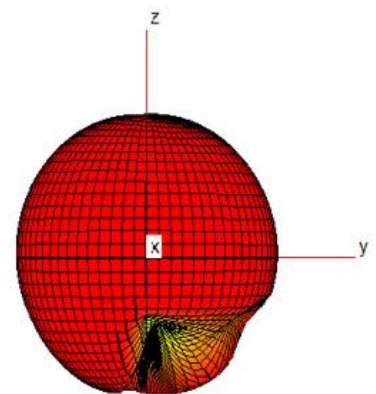
700MHz



1850MHz



2500MHz



ANTENNA SPECIFICATION

CUS P/N : N950-NA LTE

ApplicationDate:Oct,28,2022

Rev: R:A1

ZTX P/N : N950-NA LTE

Editor:

Page 10 of 15

2-4 Active test data

		RC滤波:5Ω 680pF	
Band	Channel	TRP	TIS
B4	2000	17.21	
	20175	17.65	
	20350	17.76	-94.28
B5	20450	17.22	-87.77
	20525	16.48	
	20600	16.38	-86.82
B7	20850	18.73	
	21100	18.40	
	21350	18.39	-91.34
B12	23060	17.70	
	23095	17.30	
	23120	17.00	-88.35
B13	23230	17.96	-86.78
B14	23330	17.15	-88.52
B17	23780	17.18	-88.20
	23790	17.00	
	23800	16.79	-89.26
B25	26165	20.60	
	26365	20.53	
	26565	19.86	-94.14
B26	26715	17.54	-87.88
	26865	16.32	
	27015	16.00	-86.81
B71	133172	15.36	-85.68
	133297	16.00	
	133422	16.30	-86.04
B41	40540	17.89	
	40740	17.95	
	40940	17.70	-89.08



ANTENNA SPECIFICATION

CUS P/N : N950-NA LTE

ApplicationDate:Oct,28,2022

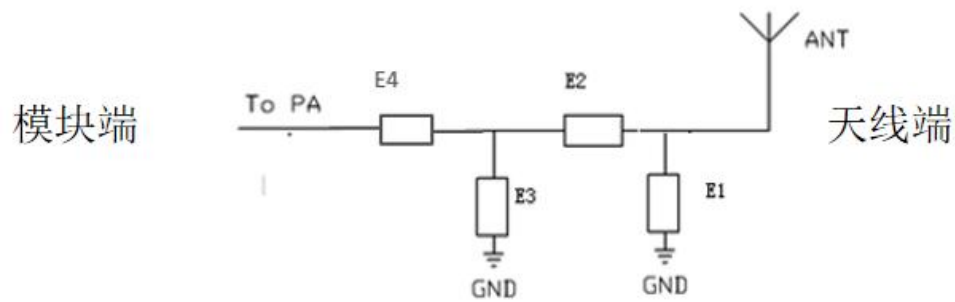
Rev: R:A1

ZTX P/N : N950-NA LTE

Editor:

Page 11 of 15

2-5 Matching circuit



匹配说明	
E1	NC
E2	0Ω
E3	9.1nH
E4	3.6pF



ANTENNA SPECIFICATION

CUS P/N : N950-NA LTE

ApplicationDate:Oct,28,2022

Rev: R:A1

ZTX P/N : N950-NA LTE

Editor:

Page 12 of 15

2-6 Environment treatment



ANTENNA SPECIFICATION

CUS P/N : N950-NA LTE

ApplicationDate:Oct,28,2022

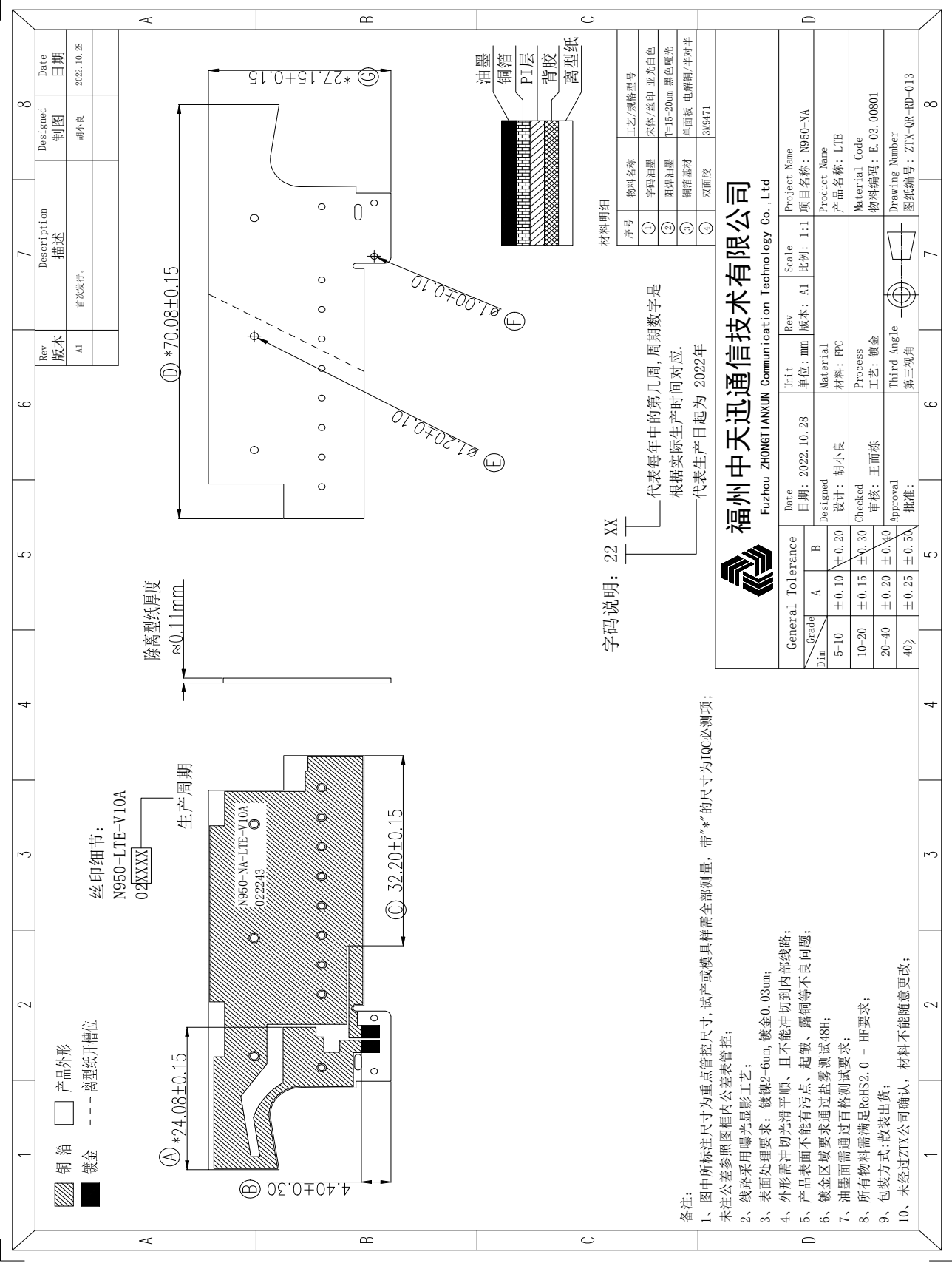
Rev: R:A1

ZTX P/N : N950-NA LTE

Editor:

Page 13 of 15

3. Mechanical Specification



ANTENNA SPECIFICATION

CUS P/N : N950-NA LTE

ApplicationDate:Oct,28,2022

Rev: R:A1

ZTX P/N : N950-NA LTE

Editor:

Page 14 of 15

4.Size report

5.Salt-Spray test

6.Environment Characteristic

NO.	ITEM	TEST CONDITION	SPECIFICATION
4-1	High Temperature/Humidity Storage Test(non operating)	1.Temperature: $+70 \pm 2^{\circ}\text{C}$ 2.Humidity: $90 \sim 95\% \text{RH}$ 3.Time: 48hrs	No material deformation is allowed.
4-2	Low Temperature/Humidity Storage Test(non operating)	1.Temperature: $-30 \pm 2^{\circ}\text{C}$ 2.Humidity: $0\% \text{RH}$ 3.Time:48hrs	The VSWR, Gain, Radiation Pattern must be met specifications after these test.



ANTENNA SPECIFICATION

CUS P/N : N950-NA LTE

ApplicationDate:Oct,28,2022

Rev: R:A1

ZTX P/N : N950-NA LTE

Editor:

Page 15 of 15

7. The packing way

福州中天迅通信技术有限公司

Fuzhou ZHONGTIANXUN Communication Technology Co., Ltd

作业指导书

LTE

N950-NA

ZTX-QD-WI-024

A1

包装

/

/

产品型号

文件编号

工单序号/名称

工序工时

日产量

图1：确认数量

图2：每10小袋用大PE袋包装

图3：小标签及追溯码

图4：贴外箱标签，封箱

物料编号

物料名称及规格

用量

工/夹装治具

MPM码:XXXXXXXXXX

产品名称:XXXXXXXX

物码:XXXXXXXXXX

数量:1000pcs

重量: XX g

周期: XXXX

纸箱(45*32.5*21)cm

PE封口袋(90*130)mm

PE开口袋(160*240)mm

1

200

20

电子称

封口机

作业方法（自检验工序作业合格后，方能流入下一道工序）

1.发现重里有超出公差范围时，须对数里进行清点

2.外箱只允许有1个物料标签，其余如有多余标签时须将其清理干净。

3.条码标签在贴于外箱时，应盡量平整，避免引起皱影响客户入库。

4.条码需清晰可扫描

3.外箱上除标签贴外，不能有任何丝印（即空白纸箱）出货；

4.将包装好的产品装入纸箱，每箱数里根据订单数里要求进行数量确认，保证每箱装入的数量正确。

5.在装好产品的箱子上将外箱标签及物料追溯码，RoHS贴于外箱的右上角，打印标签内容包括（生产产家，型号，产品名称，客户编码，数量，订单号，日期，QA检验，）

修订内容

修订日期

修订人

版本

制订

胡小良

审核

易爱玲

品质确认

胡春梅

批准

张武民