

User Manual

Action Camera



FCC ID: 2AM69T66

Model: T66

Made by: Shenzhen TAT Electronics Co., Ltd

Version: V1.0

1. Key Feature

Video Resolution: 4K@15FPS, [2.5K@30FPS](#), 1080P@60FPS, 720P@120FPS

Image Resolution: 14MP

2" TFT touch panel

3.85V/1200mAh removable Lithium-ion battery

Support Wi-Fi connection, range up to 20 meters

Customized App: Android & iOS

Support Bluetooth Remote Controller

Support Micro SD Card up to 32GB

External MIC (optional)

Quick charge (can charge 60% within 30min)

Bundle with waterproof case can support underwater 30 meters

2. Accessories in standard package

Camera x 1

Waterproof case x 1

Remote controller x 1

Quick release mount x 1

Flat mount x 1

Curved mount x 1

Knuckle x 1

Spanner x 1

Lock bolt x 2

3M adhesive for curved x 1

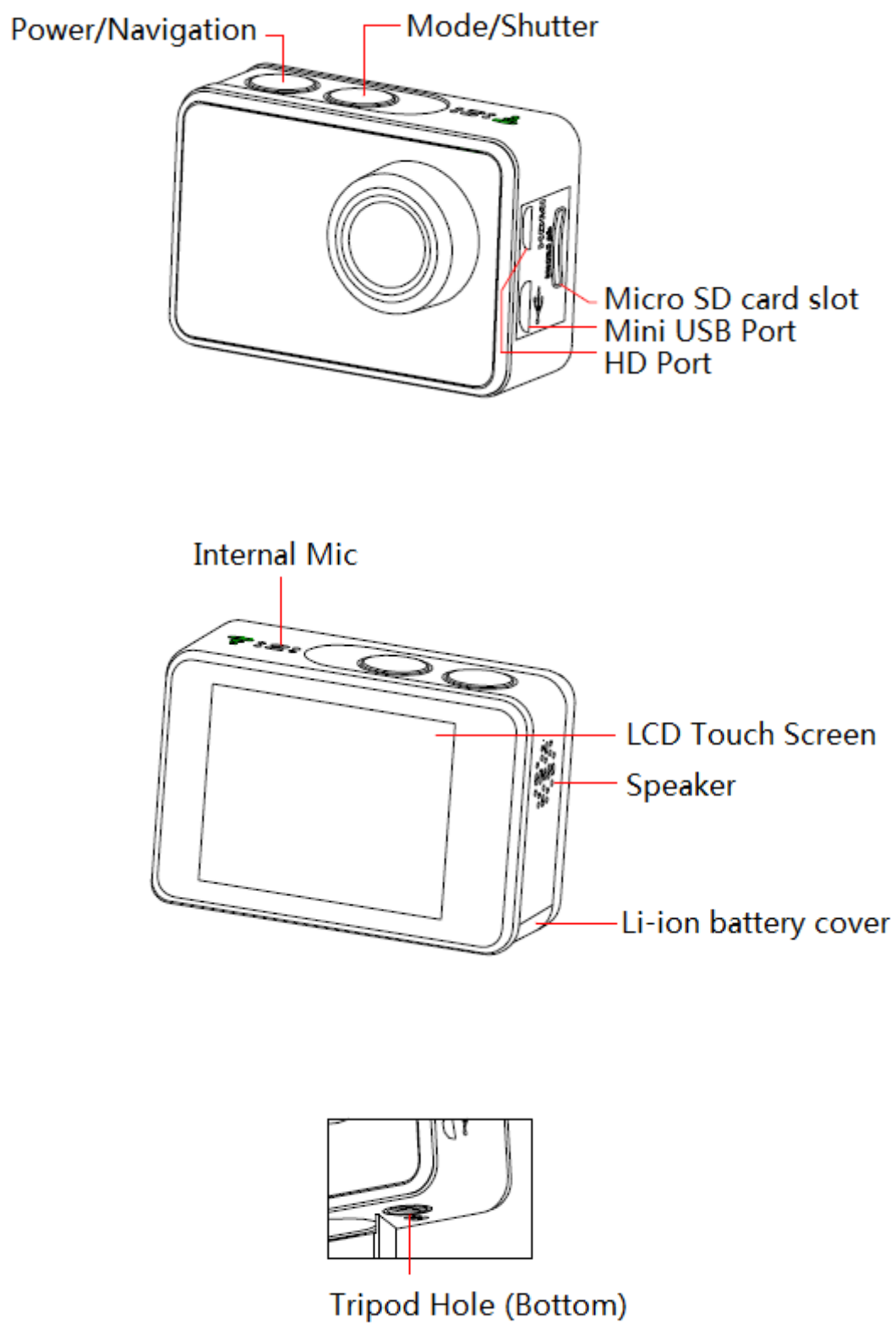
3M adhesive for flat mount x 1

Portable case x 1

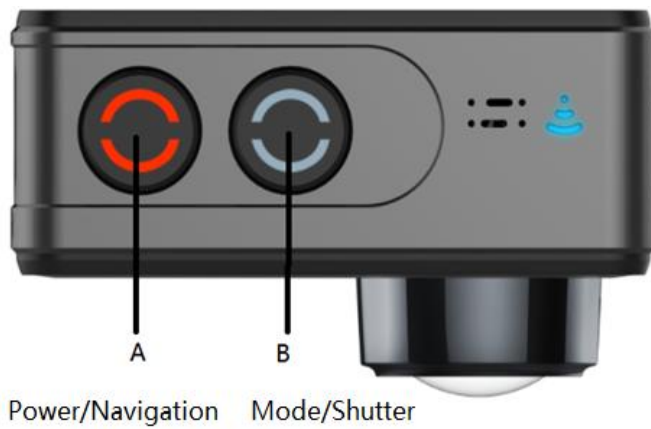
USB cable x 1



3. Camera Diagram



4. Using Your Camera



Indicators



4.1 Power on & Power off the camera

Turn on

Long press Power button (A) for 3 seconds to power on, indicator A turns blue.

Turn off

Long press on Power button (A) for 3 seconds to power off, indicator A blinks and then turn off.

4.2 Insert a Memory Card

Pull off the cover on the right side of the camera and insert a Micro SD card into the slot.

NOTE:

1. We suggest using Class 6 (or higher) Micro SD card for Smooth shooting purpose.
Lower Class of the Micro SD Card may cause the video blur or unavailable.
2. There is only one correct direction to insert the SD Card into the slot. Do not force the card into the card slot as it may damage both the SD Card and camera.
3. A new Micro SD Card should be formatted before using.

4.3 Charge the battery

Before using the T66 for the first time, please fully charge the battery .

Procedure:

1. Connect the T66 with a charger or device by Micro USB cable .
2. Charging Indicator A turns blue during charging.
3. A complete flat battery takes around 2.0 hours to get fully charged.
The red indicator turns off after the battery fully charged.
4. When the battery is going to run flat, the red indicator A blinks twice a second.
5. Some functions such as Wi-Fi is unavailable if the battery in low condition.

4.4 Insert camera into waterproof case

1. Ensure the case is dry and clean.
2. Insert the camera and make sure the lens fits neatly in the lens cavity.
3. Close the locking clamps.
4. T66 can be mounted using the accessories provided.

4.5 Shoot Video

Press Shutter button(B) when powered on, LED B blinks red twice a second; Press again to stop, and LED B light turns off.

4.6 Shoot a Single Picture

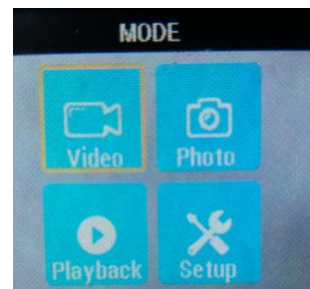
Press Shutter button(B) once to shoot a single picture, LED B flashes red.

4.7 Mode Shift

1. Main mode shift (A)

When powered on, short press on button A to shift among Video Recording - Photo Shot - Playback- Setting, pause to confirm on current mode.

You can easily access this menu with touch operation by swiping left.



2. Main mode shift (B)

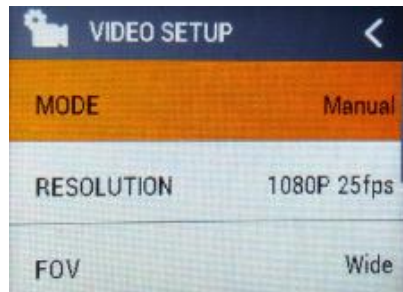
When powered on, long press on this button (B) for 3 seconds to enter Setup menu:
Video - Photo - Effect - General.

5. Setup your camera

Long press on Button B to enter Setup "Video - Photo - Effect – General", press Button A to navigate and press Button B to confirm. Long press on Button B again will exit.

5.1 Video SETUP

Press Power Button (A) once to navigate, press Shutter Button (B) to Enter/Confirm selection.



MODE

To set the video mode, Manual, Looping, Auto Stop, Timelapse.

RESOLUTION

To set the video resolution.

FOV

To set the lens wide angle, Super Wide, Wide, Medium, Narrow.



Video Quality

To set the video quality.

DIS

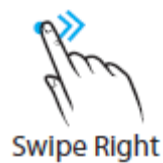
Date stamp function will be unabled when turn on DIS, DIS function will be unabled when turn on date stamp

To set the digital image stabilization.

SCENE MODE

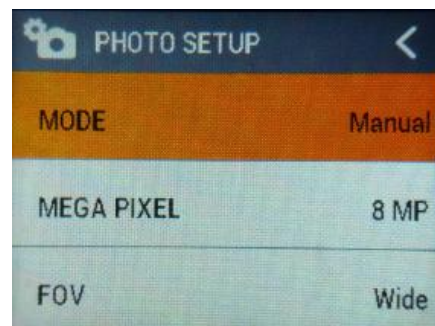
To set different scene mode, Manual, Water, Riding, Winter, Diving, Night.

You can easily access this mode with touch operation by swiping right.



5.2 Photo SETUP

Long press Button (B) to enter in "Photo", you will see the below interface.



Press Power Button (A) once to navigate, press Shutter Button (B) to Enter/Confirm selection.

MODE

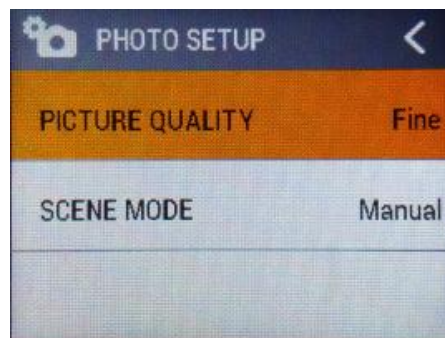
To set the photo mode, Manual, Timelapse, Burst, Self Timer.

MEGA PIXEL

To set the image resolution.

FOV

To set the lens wide angle, Super Wide, Wide, Medium, Narrow.



PICTURE Quality

To set the picture quality.

SCENE MODE

To set different scene mode, Manual, Outdoor, Indoor, Portrait, Landscape, Night.

You can easily access this mode with touch operation by swiping right.

5.3 EFFECT SETUP

Long press Button (B) to enter in "Effect", you will see the below interface.



Press Power Button (A) once to navigate, press Shutter Button (B) to Enter/Confirm selection.

ZOOM

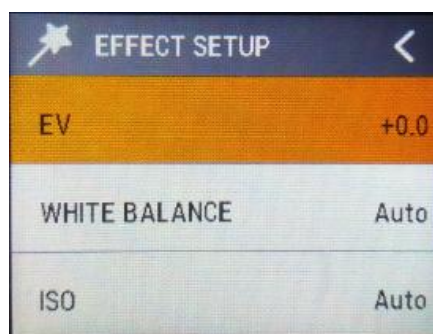
To zoom the image x1, x2, x3, x4.

FILTER

To define the amount of color saturation.

AE METER

To define which image areas are used to calculate the correct exposure.



EV

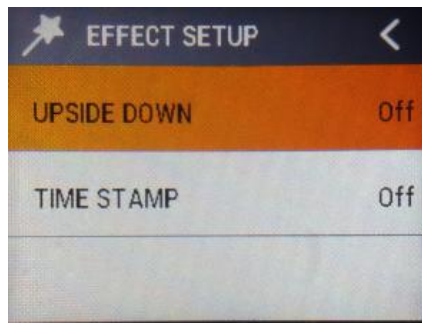
This allows user to set the light exposure value.

WHITE BALANCE

Factory default is Auto. If you switch Auto OFF, remember to adjust when lighting condition changes.

ISO

This is the measurement of the sensor's sensitivity to light.



UPSIDE DOWN

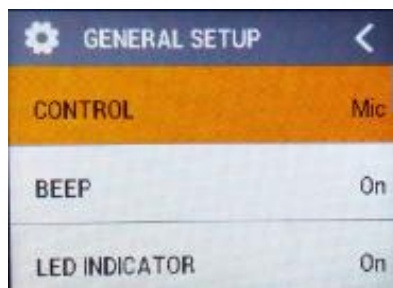
To rotate the screen.

TIME STAMP

To define if the time mark is displayed at the bottom of the videos or pictures.

5.3 GENERAL SETTING

Long press Button (B) to enter in "General", you will see the below interface.



CONTROL

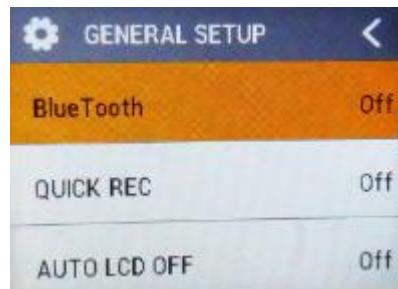
This allows user to set the microphone volume, Speaker volume, LCD Brightness.

BEEP

Turns off or on sound when a button is pressed.

LED INDICATOR

Turns off or on the LCD indicator.



BLUETOOTH

Turns off or on Bluetooth.

QUICK REC

The camera will start recording automatically after a few seconds as selected when powered on.

AUTO LCD OFF

This will determine if the LCD will turn off after 1 min, 3 min or 5 min. Press any key to turn the screen on.

Select OFF to keep the screen always ON.



AUTO POWER OFF

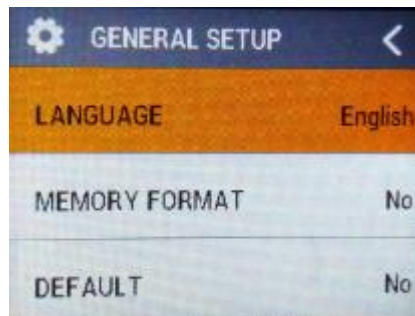
The camera turns off when not in use after specified time.

TV OUT

Setting the desired TV standard, PAL or NTSC.

TIME SETUP

This allows user to adjust the date & time.



LANGUAGE

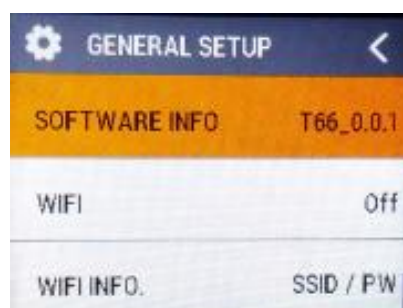
To select the device language, total 4 different languages.

MEMORY FORMAT

This is to format the SD card. Choosing to format the card will permanently erase all data on the card.

DEFAULT

To reset the camera in factory default.



SOFTWARE INFO

To display the currently installed firmware version.

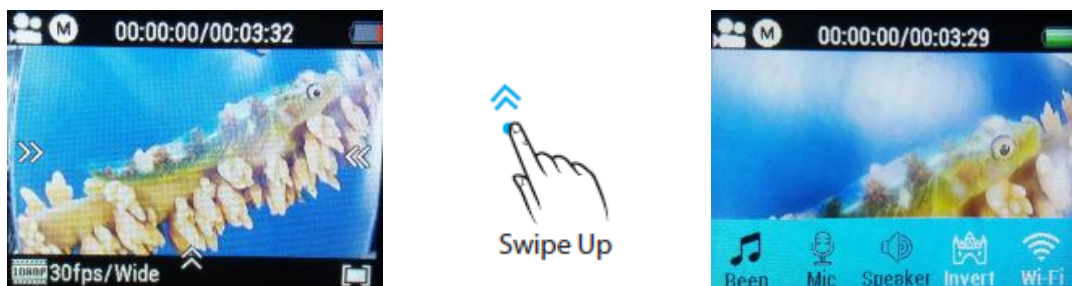
Wi-Fi

Selecting to turn on or turn off the Wi-Fi function.

Wi-Fi INFO.

To display the currently Wi-Fi SSID & Password.

Note: You can easily access some settings such as Beep, Mic, Speaker, Invert and Wi-Fi with touch operation by swiping up.



6. Playback Mode

Press Power button (A) twice to navigate, press Shutter button (B) to enter the "Playback Mode".



Long press Shutter button (B) to select video/photo, press Shutter button (A) to navigate and press button (B) to open the video/photo.

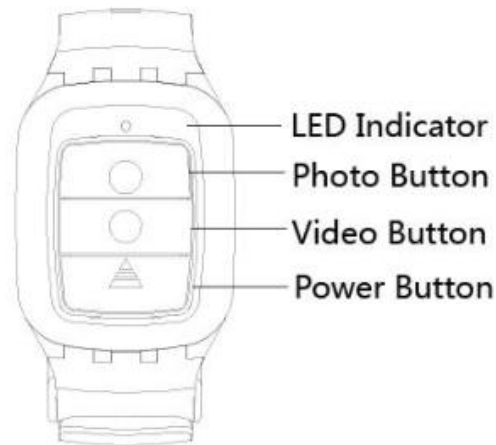


Long press button (B) to exit video/photo. Long press button (B) to enter upper Menu. Press button (A) to navigate and (B) to confirm.



Notice: You can operate it more easily by tap the screen.

7. Remote Control



7.1 Paring Procedure

Press power button and hold on for 3seconds to turn on the controller. The LED Indicator will blink blue.

Long press button B and then press button A to navigate. Press button B to enter "General Menu" and select the "BlueTooth"

Turn on "BlueTooth". Wait for 5 seconds, the camera will connect to controller. LED Indicator will light blue.

7.2 Using your remote

Photo Shot: Press the Photo button once to shoot a single picture, the LED indicator of remote flickers twice.

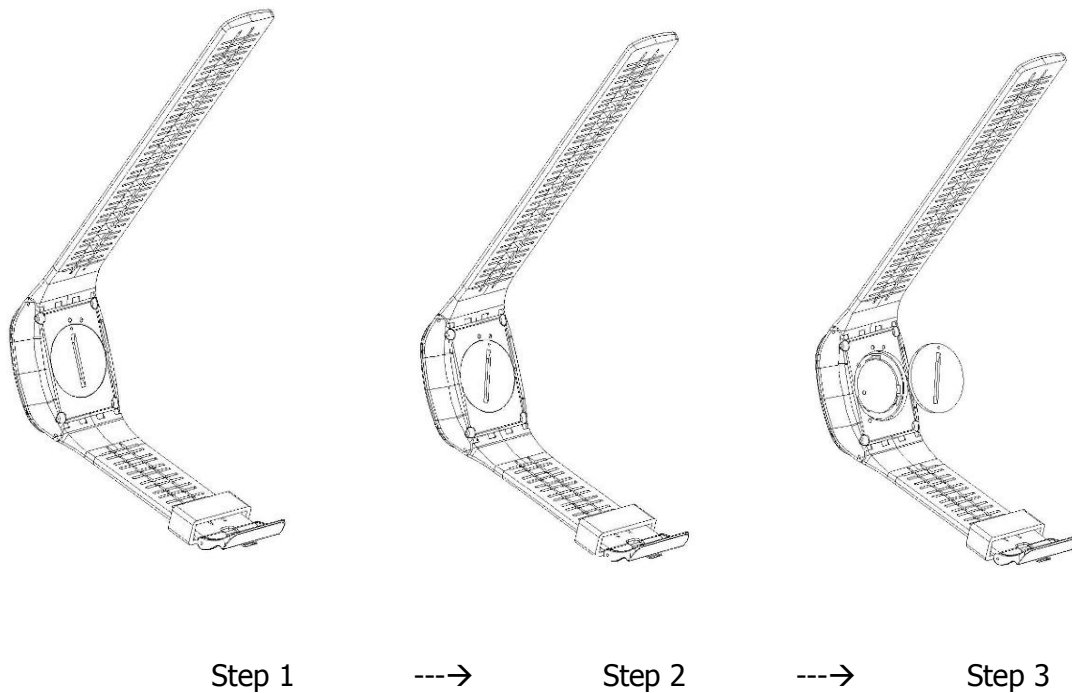
Video Record: Press the Video button once to start recording, the LED indicator flickers twice also, press the Video button again to stop.

Power Off button: Press the Power Off button and hold on for 3seconds to turn off the camera, the LED indicator turns off accordingly.

7.3 Replace a new button battery

Like any battery, the one in the T66' remote will eventually die. When it does, the red LED indicator flickers once per second. You need to replace with a new button battery.

How to replace a button battery?



1. Begin by purchasing a replacement battery for your remote. You need a button battery with model No. CR2032.
2. Screw the round cap at the bottom of remote, see above pictures for reference.
3. Remove the old battery.
4. Insert the new battery into the slot where the old battery was, with the flat surface up.

8. Wi-Fi Setup

The T66 allows full camera control, live previewing and playback of photos/videos on most Smart phones and Tablets.

- a. Download the App "iSmart Pro" from "Google Play" or from the Apple "App Store".
- b. Activate Wi-Fi in the GENERAL SETUP MENU.

Note: You can easily access the Wi-Fi setting with touch operation by swiping up

- c. Go to the Wi-Fi settings on your Phone, you will see **T66_xxxxxxx** in the list of available Wireless networks.

Note: You can change the Wi-Fi name in the menu setting.

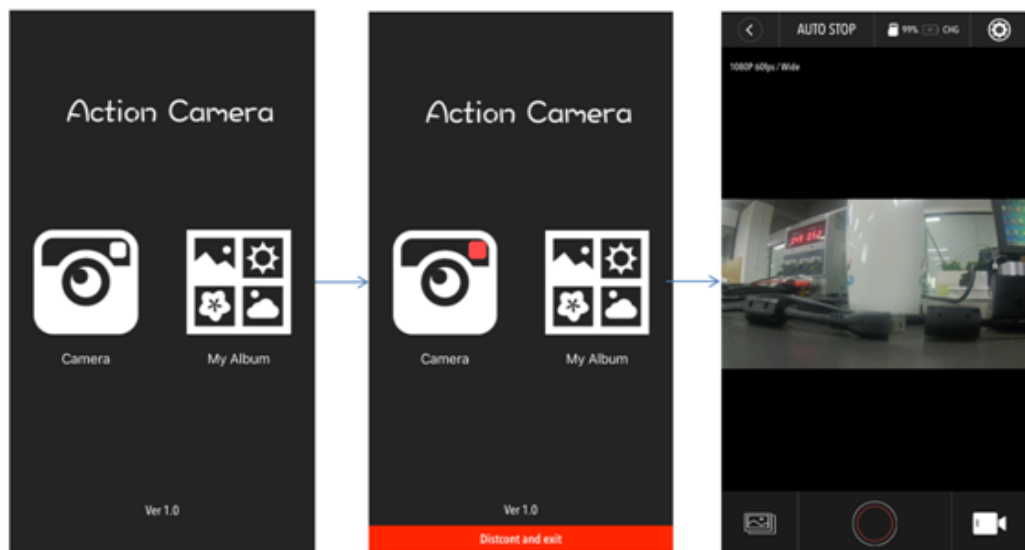
- d. Connect your Phone to the **"T66_xxxxxxx"** via Wi-Fi.

The default Wi-Fi Password for the T66 is: 1234567890.

Note: You can change the Wi-Fi password in the menu setting.

- e. Open the app "iSmart Pro"

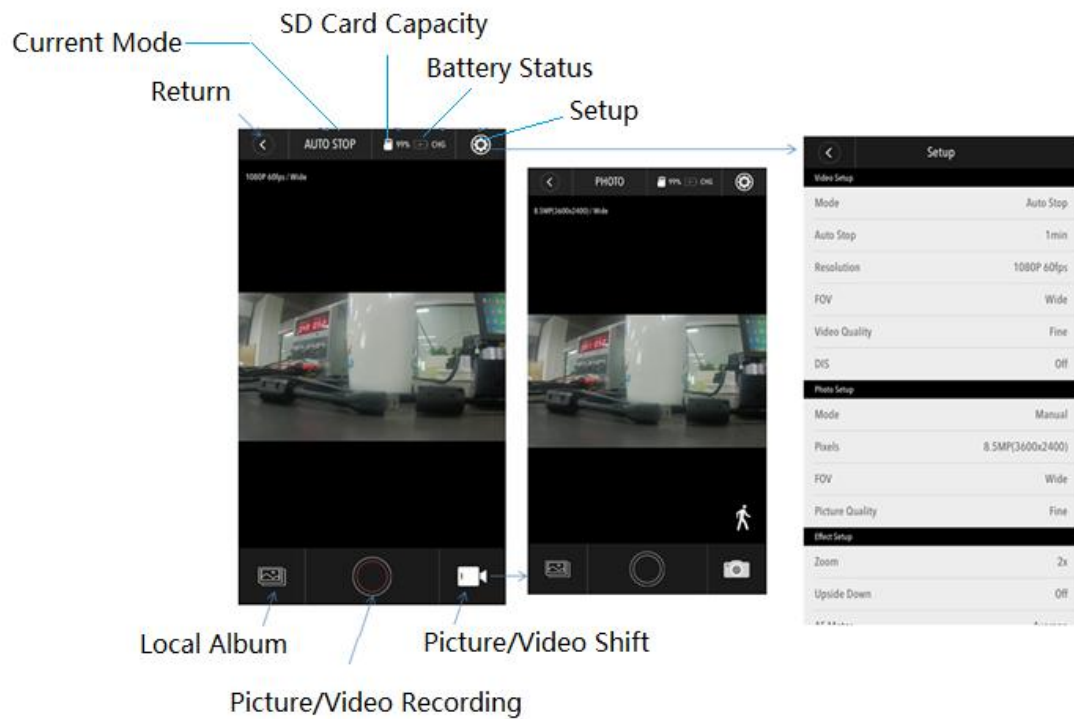
Important: Before connecting camera via Wi-Fi, you need to download the "iSmart Pro" App on your smart phone or tablet.



Open the App

Connect successfully

Enter into the live interface



Setup	
Photo Setup	
Effect Setup	
Zoom	2x
Upside Down	Off
AE Meter	Average
EV	0.0
Filter	Off
Time Stamp	On
White Balance	Auto
ISO	Auto
General Setup	
Control	
Beep	On
LED Indicator	Four
TV Out	NTSC
Memory Format	

Setup	
Effect Setup	
General Setup	
Control	
Beep	On
LED Indicator	Four
TV Out	NTSC
Memory Format	
Language	English
Time Setup	
Quick REC	Off
Auto LCD Off	30 SEC
Screen Lock	Off
Default Setting	
WiFi Setup	
Version Info	

Setup Interface

9. Saving and Viewing Options

9.1 Connecting to TV

You can display the camera LCD screen on a TV screen.

Note: You will need an extra Mini HDMI to HDMI cable, which is not included in the standard package.

- Turn the camera on;
- Connect Mini HDMI end to the port on camera and HDMI end to HDMI port on the TV;
- Select the right source on the TV;
- Turn the camera on.

9.2 Transferring files to PC

Use the USB cable to connect the camera on your computer , the camera will turn on automatically, then enter into storage mode, that is to say, your camera now is used as an external storage device. Alternatively you can remove the Micro SD card and use a card reader (not included) to achieve the same result.

1. Select the file(s) you want to transfer to your computer by highlighting them.
2. Either drag the files to the desired place on your computer (this will make a copy of the file on your computer) OR right-click the file, select "Copy" and right-click in the desired place in your computer and select "Paste".

Note: You can also transfer entire folders of pictures / videos to your computer.

9.3 Using the external MIC (optional)

Insert the external MIC to Mini USB port, the camera will automatically switch to record the sound from the external MIC.

This will help to reduce the noise and get better video sound.

Cautions

Do not drop the camera.

Do not place heavy objects on the camera.

Keep the camera away from water and liquids (unless equipped with waterproof case).

This may cause the camera to malfunction.

Recharge the battery via the USB cable.

The camera should not be in heat over 55°C.

Do not use the camera when it is low power.

Do not use the camera while it is in charging.

Do not attempt to open the case of the camera or modify it in any way. If the camera has been detached, the warranty will be void. Maintenance and repairs can only be performed by TAT.

Note:

Changes or modifications not expressly approved by the party responsible for compliance could void the user's authority to operate the equipment.

This device complies with Part 15 of the FCC Rules. Operation is subject to the following two conditions: (1) this device may not cause harmful interference, and (2) this device must accept any interference received, including interference that may cause undesired operation.

This equipment has been tested and found to comply with the limits for a Class B digital device, pursuant to Part 15 of the FCC Rules. These limits are designed to provide reasonable protection against harmful interference in a residential installation. This equipment generates, uses and can radiate radio frequency energy and, if not installed and used in accordance with the instructions, may cause harmful interference to radio communications. However, there is no guarantee that interference will not occur in a particular installation.

If this equipment does cause harmful interference to radio or television reception, which can be determined by turning the equipment off and on, the user is encouraged to try to correct the interference by one or more of the following measures:

- Reorient or relocate the receiving antenna.
- Increase the separation between the equipment and receiver.
- Connect the equipment into an outlet on a circuit different from that to which the receiver is connected.
- Consult the dealer or an experienced radio/TV technician for help.

This modular complies with FCC RF radiation exposure limits set forth for an uncontrolled environment. This transmitter must not be co-located or operating in conjunction with any other antenna or transmitter.