



XIAMEN EVERESPORTS GOODS CO., LTD

No. 101 Ji'an Road, Tong'an District, Xiamen, China

Tel : 0086-592-5216578

EVS BLE Module User Guide

Version 1.0



XIAMEN EVERESPORTS GOODS CO., LTD

No. 101 Ji'an Road, Tong'an District, Xiamen, China

Tel : 0086-592-5216578

Table of Contents

Introduction.....	3
PCB Dimensions.....	4
Pin Assignment.....	6
Electrical Specifications.....	8
Operating Conditions.....	8
Typical Setup.....	9
FCC Caution.....	10



XIAMEN EVERESPORTS GOODS CO., LTD

No. 101 Ji'an Road, Tong'an District, Xiamen, China

Tel : 0086-592-5216578

Introduction

EVS BLE module is a Bluetooth Low Energy (BLE) module based on Nordic nRF51822 SoC, incorporating a rich set of peripherals, such as GPIO, UART, SPI, I2C, ADC, PWM, Timers, etc..

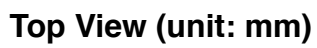
EVS BLE module simply populates the pins of nRF51822 to easily accessible stamp-like pads, allowing fast prototyping and fast product integration. This module may act as a BLE client, master or both at the same time.

For details on nRF51822, please consult the product specification of nRF51822. Some of the highlights:

- ARM Cortex M0 processor with SWD debug interface
- BLE ready
- Memory: 256kB Flash + 16kB RAM
- Flexible pin mutiplex configurations
- Rich set of peripherals: GPIO, UART, SPI, I2C, ADC, PWM, Timer, AES HW encryption, quadrature decoder, RTC, etc.



PCB SIZE : (L) 19 x (W) 12 mm

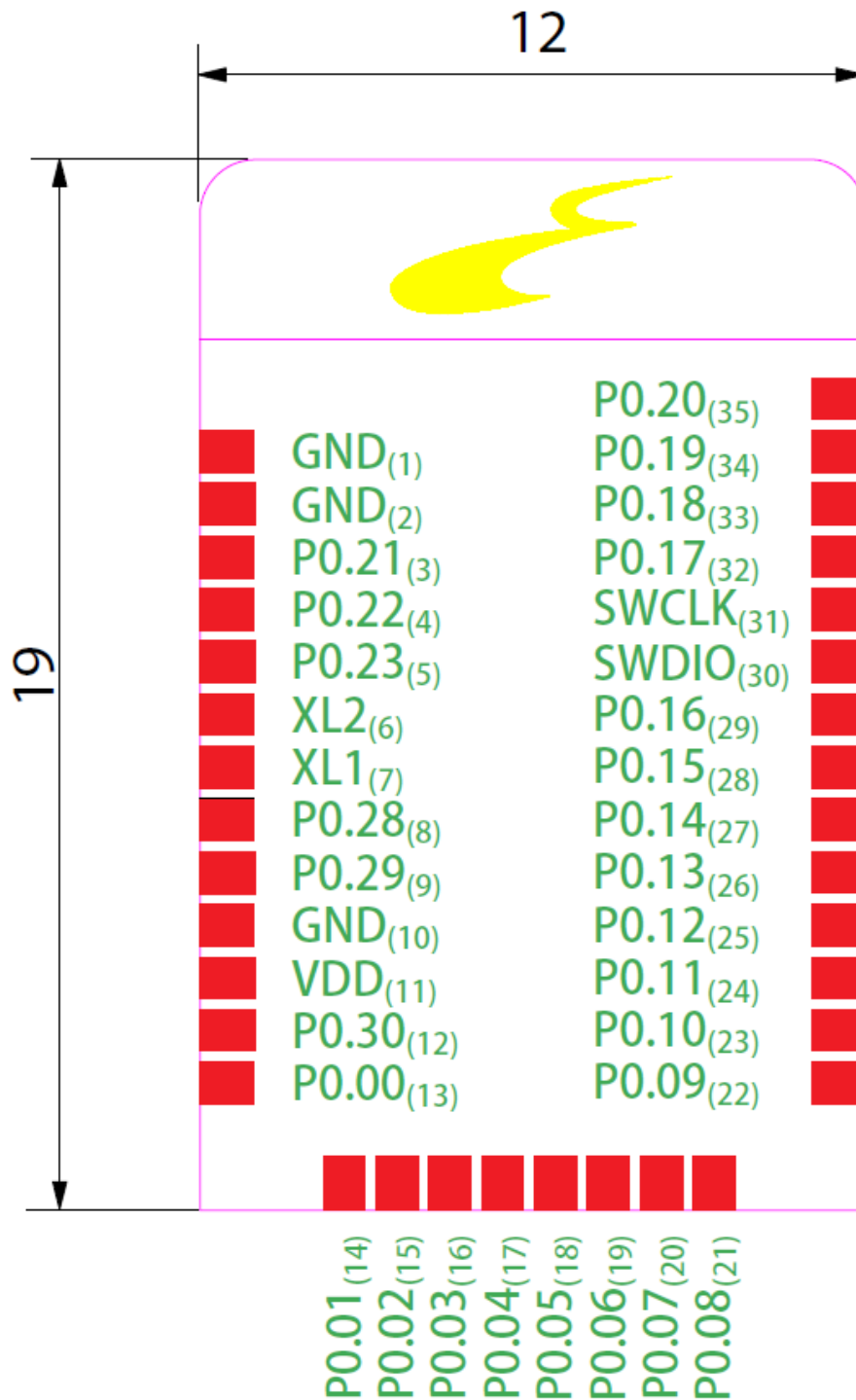




XIAMEN EVERESPORTS GOODS CO., LTD

No. 101 Ji'an Road, Tong'an District, Xiamen, China

Tel : 0086-592-5216578



Top View (unit: mm)



XIAMEN EVERESPORTS GOODS CO., LTD

No. 101 Ji'an Road, Tong'an District, Xiamen, China

Tel : 0086-592-5216578

Pin Assignment

Pin No.	Name	Function	Description
(1)(2)	GND	Ground	The pad must be connected to a solid ground plane.
(3)	P0.21	Digital I/O	General purpose I/O pin.
(4)	P0.22	Digital I/O	General purpose I/O pin.
(5)	P0.23	Digital I/O	General purpose I/O pin.
(6)	P0.26	Digital I/O	General purpose I/O pin.
	AIN0	Analog input	ADC/LPCOMP input 0.
	XL2	Analog output	Connection for 32.768 kHz crystal.
(7)	P0.27	Digital I/O	General purpose I/O pin.
	AIN1	Analog input	ADC/LPCOMP input 1.
	XL1	Analog input	Connection for 32.768 kHz crystal or external 32.768 kHz clock reference.
(8)	P0.28	Digital I/O	General purpose I/O pin.
(9)	P0.29	Digital I/O	General purpose I/O pin.
(10)	GND	Ground	The pad must be connected to a solid ground plane.
(11)	VDD	Power	Power supply.
(12)	P0.30	Digital I/O	General purpose I/O pin.
(13)	P0.00	Digital I/O	General purpose I/O pin.
	AREF0	Analog input	ADC/LPCOMP reference input 0.
(14)	P0.01	Digital I/O	General purpose I/O pin.
	AIN2	Analog input	ADC/LPCOMP input 2.
(15)	P0.02	Digital I/O	General purpose I/O pin.
	AIN3	Analog input	ADC/LPCOMP input 3.
(16)	P0.03	Digital I/O	General purpose I/O pin.
	AIN4	Analog input	ADC/LPCOMP input 4.
(17)	P0.04	Digital I/O	General purpose I/O pin.
	AIN5	Analog input	ADC/LPCOMP input 5.

**XIAMEN EVERESPORTS GOODS CO., LTD**

No. 101 Ji'an Road, Tong'an District, Xiamen, China

Tel : 0086-592-5216578

Pin No.	Name	Function	Description
(18)	P0.05	Digital I/O	General purpose I/O pin.
	AIN6	Analog input	ADC/LPCOMP input 6.
(19)	P0.06	Digital I/O	General purpose I/O pin.
	AIN7	Analog input	ADC/LPCOMP input 7.
	AREF1	Analog input	ADC/LPCOMP reference input 1.
(20)	P0.07	Digital I/O	General purpose I/O pin.
(21)	P0.08	Digital I/O	General purpose I/O pin.
(22)	P0.09	Digital I/O	General purpose I/O pin.
(23)	P0.10	Digital I/O	General purpose I/O pin.
(24)	P0.11	Digital I/O	General purpose I/O pin.
(25)	P0.12	Digital I/O	General purpose I/O pin.
(26)	P0.13	Digital I/O	General purpose I/O pin.
(27)	P0.14	Digital I/O	General purpose I/O pin.
(28)	P0.15	Digital I/O	General purpose I/O pin.
(29)	P0.16	Digital I/O	General purpose I/O pin.
(30)	SWDIO/nRESET	Digital I/O	System reset (active low). Also hardware debug and flash programming I/O.
(31)	SWCLK	Digital input	Hardware debug and flash programming I/O.
(32)	P0.17	Digital I/O	General purpose I/O pin.
(33)	P0.18	Digital I/O	General purpose I/O pin.
(34)	P0.19	Digital I/O	General purpose I/O pin.
(35)	P0.20	Digital I/O	General purpose I/O pin.



XIAMEN EVERESPORTS GOODS CO., LTD

No. 101 Ji'an Road, Tong'an District, Xiamen, China

Tel : 0086-592-5216578

Electrical Specifications

Operating Conditions

Symbol	Description	Notes	Min	Typical	Max	Units
VDD	Supply voltage		2.1	3	3.6	V
TA	Operating temperature		0	25	80	°C

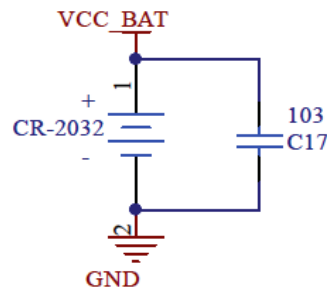
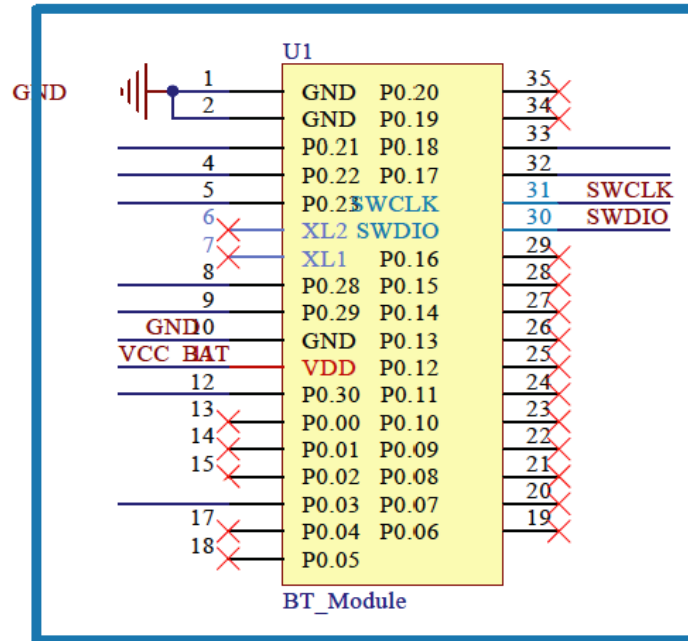


XIAMEN EVERESPORTS GOODS CO., LTD

No. 101 Ji'an Road, Tong'an District, Xiamen, China

Tel : 0086-592-5216578

Typical Setup





XIAMEN EVERESPORTS GOODS CO., LTD

No. 101 Ji'an Road, Tong'an District, Xiamen, China

Tel : 0086-592-5216578

FCC Caution

Caution: The user is cautioned that changes or modifications not expressly approved by the party responsible for compliance could void the user's authority to operate the equipment.

This device complies with Part 15 of the FCC Rules. Operation is subject to the following two conditions: (1) this device may not cause harmful interference, and (2) this device must accept any interference received, including interference that may cause undesired operation.

NOTE: This equipment has been tested and found to comply with the limits for a Class B digital device, pursuant to Part 15 of the FCC Rules. These limits are designed to provide reasonable protection against harmful interference in a residential installation. This equipment generates, uses and can radiate radio frequency energy and, if not installed and used in accordance with the instructions, may cause harmful interference to radio communications. However, there is no guarantee that interference will not occur in a particular installation.

If this equipment does cause harmful interference to radio or television reception, which can be determined by turning the equipment off and on, the user is encouraged to try to correct the interference by one or more of the following measures:

- Reorient or relocate the receiving antenna.
- Increase the separation between the equipment and receiver.
- Connect the equipment into an outlet on a circuit different from that to which the receiver is connected.
- Consult the dealer or an experienced radio/TV technician for help.

FCC Radiation Exposure Statement:

This equipment complies with FCC radiation exposure limits set forth for an uncontrolled environment.

This transmitter must not be co-located or operating in conjunction with any other antenna or transmitter.