

# HD IP camera

## operating instructions

**Dear customer, welcome to use this product, before using this product, please read the operation instructions in detail, and keep this manual for future reference.**

## I、Realize your HD PTZ IP Camera.

---



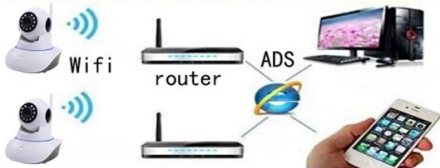
## II、Interface definition and connection diagram

- ① Network interface: using the network cable to access the Internet .
- ② WIFI antenna: receive WIFI signal;
- ③ Memory card socket: insert memory card,support 32G:device can stock video/picture;
- ④ Power supply interface; connect power adapter

### Connection mode 1:LAN connection



### Connection mode 2: Wan connection



## III、Mobile phone software operation

---

**For better experience the convenience of this product , please download mobile phone software before using this product:**

### **1 Mobile phone software download:**

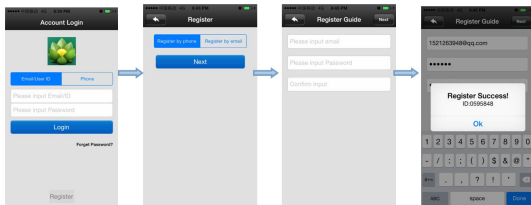
- 1)IOS user can download and install 163eye in APP Store.
  - 2)Android user can enter website :<http://163eye.cc> ,download and install 163eye
  - 3)You can also input <http://163eye.cc> in the explorer to download it in PC,
- Android version and IOS version can scan the QR code to download the software directly, PC click **PC Client** to download directly.

中文 | English



### **2 Mobile phone ID register**

**Note: first time open the “163eye” software , user need register one ID as following:**



- ① choose below “register” to enter
- ② choose “mobile phone register” or “email register” , click “next”
- ③ input email box and password,click “next” (when use email register, doesn’t need verification code ,register it directly; if mobile phone register,the verification code will be sent to the phone by message.)
- ④ if register successfully,it will show “ congratulations,register successfully”,and the system will automatically distribute one ID to you at the same time,please remember this ID,it can be used as the user name ,click “confirm” , input the password again,then you can login normally.

### **3 Mobile phone network connection**

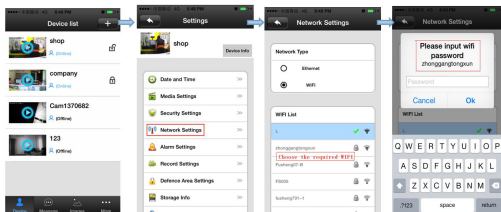
There are two ways for connecting device to network:

- 1)**Wired connection:** after the camera power on,connect one end of the cable to the camera ,the other end to the router LAN network light will be normally on after connection successfully.
- 2)**WIFI connection:** the users can follow the below ways if they wants to start using WIFI to get connection with the camera when the camera is wired

connection:

A、 please add the device to the 163eye device list: “Add device” ,**please view the fourth part for the detail steps.**

B、 open 163eye software, 1 、 choose “device” , click device name,choose “settings”; 2 、 choose “network settings” 3 、 **(please don’t choose “WIFI” directly at the moment )** the following will search all of the WIFI signal near it automatically,choose your WIFI ID 4 、 input WIFI password Factory password is123,then open wifi successfully.

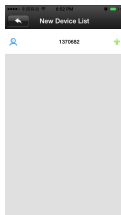
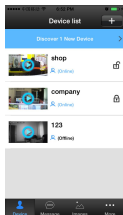


C、 set WIFI by “intelligent online”: 【details refer to 4、 add device on mobile phone》 2）】

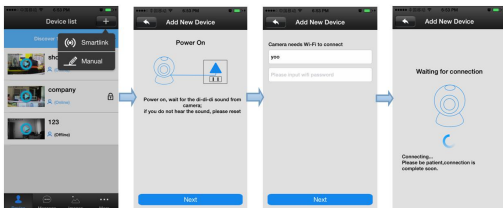
#### 4 Add device on mobile phone

How to add the device to device list:

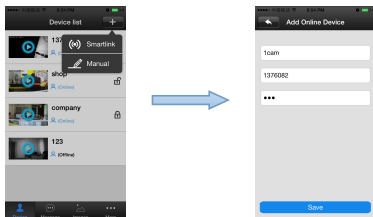
1) In the device list interface of the “163eye” software, when the camera is in network and the phone is in the same WIFI, both of them are in one LAN, the software will find all the devices automatically, and only need choose ,add and set the access password (Factory password is123 )



- 2) open the 163eye software,click “Device”,choose the “+”button ,choose “intelligent online” ,click next and then choose the WIFI and WIFI password you need,click the “next” again ,connect the device.



- 3) Add device manually: in the device interface of the 163eye software,click the “+” ,input ID and password. (Factory password is123 )



## 5 The device monitor of mobile phone

1) 、contact person: click the device icon that has been added in device list to entry the monitor mode .

## 6 The video settings of mobile phone.

1) 、Video: this device supports 32GB TF card in max ,if need record video,please insert the memory card at first,and then open the 163eye :click Device ->Device name ->settings->video settings,user can choose record video manually ,alarm video, timing video.

2) 、playback: this device support playback in mobile phone,open the 163eye software:click Device->Device name->playback, user can find the playback files according to the date, then play it directly .

## 7、 Mobile phone zone settings

### 1) 、 Alarm learning code.

**Note: this function is optional,please be sure your device has this function.**

This device with 8pcs remote control ,8\*8=64pcs wireless



alarm(433frequency),support 8 groups.The following is the learning code ways:

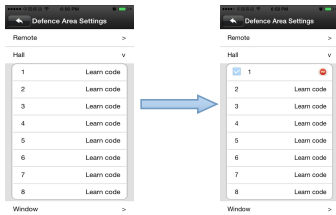
A、 Please add device to device list in 163eye software.

B、 Click Device->device name->settings->zone settings

C、 Eg:you want to learn one door sensor that installed in the hall,the serial number is 1.Click “Hall”-click number 1,pop-up:



Click “confirm”, and trigger the alarm you will learn at the same time(take the door sensor as example,separate the door sensor will trigger the alarm).if match code successfully,the words will be turn blue from gray,and will pop-up :learn successfully”.



D、 Back to device list interface ,click the right lock key of the device,

“🔒”means Arming, “🔓” means disarming, the alarm will be effective if mach code successfully after arming 15secs.

E、 “remote control”is special designed for alarm remote control ,the way of matching code is the same as “A、B、C”, the function is equal to the right key 🔑 of the device list in the 163eye software, it can be used as

“arming,disarming”, but it need match with the device learning, here does not explain in detail.

**2) delete match code : click the access number that had learned, then confirm delete.**

### **3) Alarm Setting:**

Arming: there are two ways : one press the infrared remote control arming key(lock key) that has learned successfully ;another is the arming keys (lock key) in the back of the APP contact list, after arming ,when there is a case, the device will send the alert to the APP actively , and send the scene captured images to the alarm mail at the same time.

**Push account,alarm mail:**Click on the device name - > settings - > alarm settings: add receiving alert APP ID in binding account (open 163eye software,can be found after clicking on the first"settings" button from right below, can add five account in max), alarm position write the receiving alarm email address.

**Motion detection:** alarm as soon as the scene change.

**Buzzer:**open the buzzer, when have alert the device will sirens screaming until "disarming".

## **8 Device Upgrading**

Click device name - > Settings - > check device update: click on the new version number,it will remind the new version number if have the new version ,and the user can choose whether need upgrade

## **IV、 software operation in PC**

### **1 Download software in PC**

1)Input <http://163eye.cc> in the PC explorer ,click the icon

## PC Client

to download directly.

中文 | English

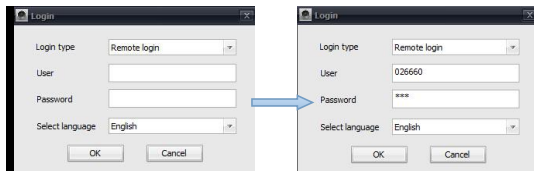
Android Client

Apple Client

PC Client

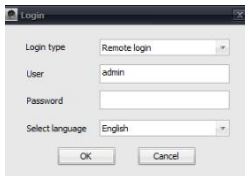
## 2 login account in PC

A、there are two ways to login, select "remote login", use the ID( email/phone number/163eye account ID) that register in mobile phone to login directly, no need to register again.



The image shows two screenshots of a 'Login' dialog box. The left screenshot shows the 'Login type' dropdown set to 'Remote login'. The right screenshot shows the 'User' field filled with '026660' and the 'Password' field filled with '\*\*\*\*'. A blue arrow points from the left screenshot to the right one.

when the PC software choose "Login locally", the account is: admin  
password: None




A login dialog box titled "Login" with the following fields and options:

- Login type: Remote login (dropdown menu)
- User: admin (text input)
- Password: (empty text input)
- Select language: English (dropdown menu)
- Buttons: OK, Cancel

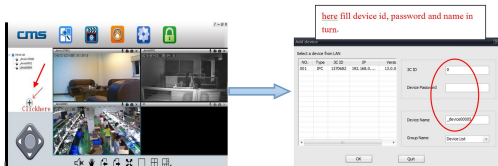
### 3 Computer terminal network connection (the same as mobile phone software operation three ", 3)

### 4 Add device to PC

How to add the device to device list? Please refer to the specific method

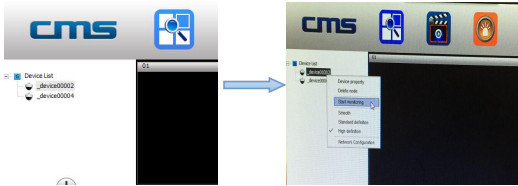
3) In the left side of the "CMS" software interface, click the button  ,  
input device name and ID and password and click ok,

( Factory password is123 ) specific operations such as the following:



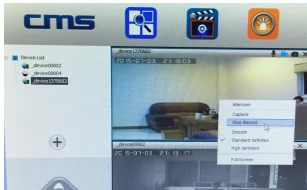
### 5 Device monitor in PC.

Open CMS software, right click device name -> start monitor, as the following picture:




## 6 video setting in PC.

- 1) Video: this device can store the video in the computer hard disk, right click on the monitor screen ,select "start video" (note: be sure only in the computer monitoring condition ,the video can be stored in the computer hard disk)



- 2) playback: this device can playback the video from computer, open the

CMS software, click the replay button  , choose "playback" , user can find the playback files according to the date, then play it directly . (note: the video in computer hard disk only can be played in PC ,does not support playing in mobile phone )



## V、Restore factory settings

Reset will erase all user Settings: including WIFI information,access password , alarm information, arming zone information.

The steps:Find the reset hole at the bottom of the device,and then use needle to insert it ,press it more than three seconds after hearing "di" sound ,when hearing the sound like "draw the sword", reset successfully.



press it more than three seconds after hearing "di" sound ,when hearing the sound like "draw the sword", reset successfully.

## **FCC Statement**

This equipment has been tested and found to comply with the limits for a Class B digital device, pursuant to Part 15 of the FCC Rules. These limits are designed to provide reasonable protection against harmful interference in a residential installation. This equipment generates uses and can radiate radio frequency energy and, if not installed and used in accordance with the instructions, may cause harmful interference to radio communications. However, there is no guarantee that interference will not occur in a particular installation. If this equipment does cause harmful interference to radio or television reception, which can be determined by turning the equipment off and on, the user is encouraged to try to correct the interference by one or more of the following measures:

- Reorient or relocate the receiving antenna.
- Increase the separation between the equipment and receiver.
- Connect the equipment into an outlet on a circuit different from that to which the receiver is connected.
- Consult the dealer or an experienced radio/TV technician for help.

This device complies with part 15 of the FCC Rules. Operation is subject to the following two conditions: (1) This device may not cause harmful interference, and (2) this device must accept any interference received, including interference that may cause undesired operation.

Changes or modifications not expressly approved by the party responsible for compliance could void the user's authority to operate the equipment.

This equipment complies with FCC radiation exposure limits set forth for an uncontrolled environment. This equipment should be installed and operated with minimum distance 20cm between the radiator & your body.