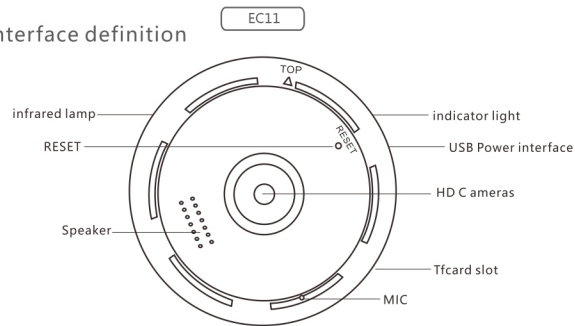
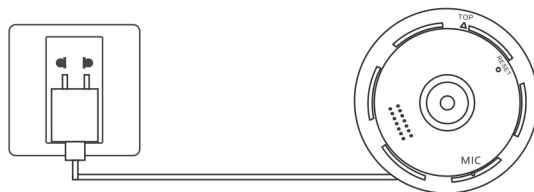


Quick installation user manual

Interface definition



① Plug in power

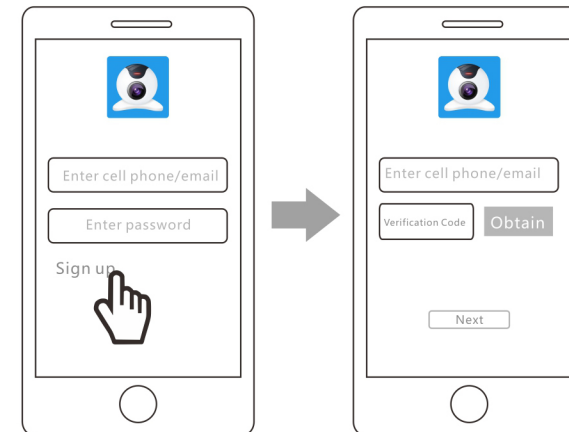


② Download and install the APP



As Wechat restrictions , please use other QR code scanning tools or browsers to scan

③ Register an account

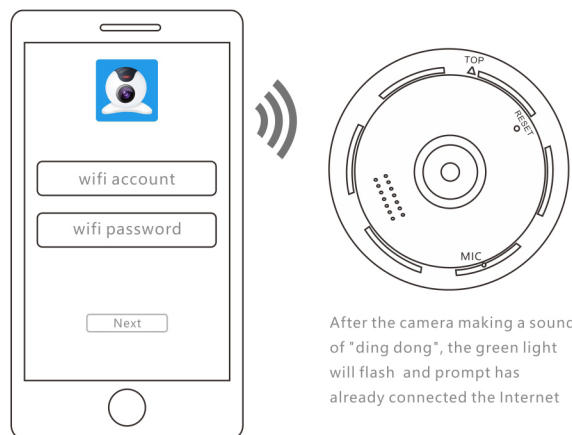


Step1 : Click "register"

Step 2: Fill in mobilephone number / email and verification code and click "Next"

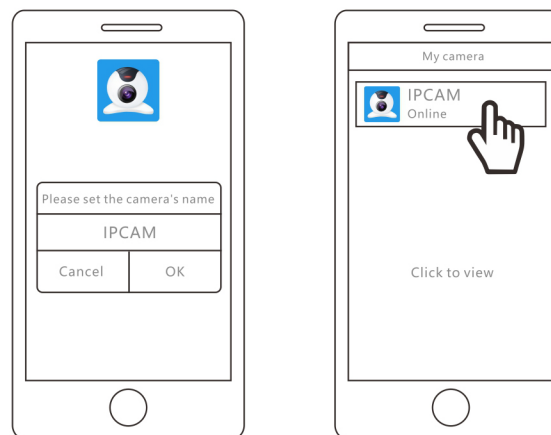
Step 3: Set password and click "Done"

④ Connect to wifi



Enter the correct WIFI password after connect to the WIFI
Increase the mobilephone volume and approach the camera as close as you can

⑤ Connect successfully



AFQ

1. Scan the QR code but can't download the APP

As Wechat restrictions , please use other QR code scanning tools or browsers to scan

2. Can't receive the verification code

Please make sure you have filled in the correct mobilephone number/E-mail and make sure they are not intercepted

3. After plug in power, the camera have not sound on "didi", and not flash in red light

Please make sure the camera is power on normally

Please press the reset button about 3 seconds.

4. When the camera connected, there is no flashing green light, and no prompt "have already connect the Internet"

Please make sure you have enter the correct WIFI password

The camera don't support connect to 5G WIFI currently.

The camera can't support the WIFI which with special characters currently.

Please make sure the WIFI signal and patency is good.

5. When adding the camera, prompt that it has added by other account

It's camera's own security mechanism, every camera can only be added by one account. If it prompts like that when adding camera, please contact your vendor to unbind it.

6 Support access to the client

Android and apple

7 Video playback

For the protection of video security can only be played on the client (not supported by computer playback)

8 No alarm picture

No memory card inserted

9 Language problems

App language support: automatic synchronization of mobile phone current language, in the absence of support for the case, the default is english". Camera prompt tone language automatic synchronous mobile phone language, in the case did not support the language, the default is english"

FCC Statement

This equipment has been tested and found to comply with the limits for a Class B digital device, pursuant to Part 15 of the FCC Rules. These limits are designed to provide reasonable protection against harmful interference in a residential installation. This equipment generates uses and can radiate radio frequency energy and, if not installed and used in accordance with the instructions, may cause harmful interference to radio communications. However, there is no guarantee that interference will not occur in a particular installation. If this equipment does cause harmful interference to radio or television reception, which can be determined by turning the equipment off and on, the user is encouraged to try to correct the interference by one or more of the following measures:

- Reorient or relocate the receiving antenna.
- Increase the separation between the equipment and receiver.
- Connect the equipment into an outlet on a circuit different from that to which the receiver is connected.
- Consult the dealer or an experienced radio/TV technician for help.

This device complies with part 15 of the FCC Rules. Operation is subject to the following two conditions: (1) This device may not cause harmful interference, and (2) this device must accept any interference received, including interference that may cause undesired operation.

Changes or modifications not expressly approved by the party responsible for compliance could void the user's authority to operate the equipment.

The device has been evaluated to meet general RF exposure requirement. The device can be used in portable exposure condition without restriction.