

TVT280 Visual IR Thermometer – Operation Flow (rev 0.5)

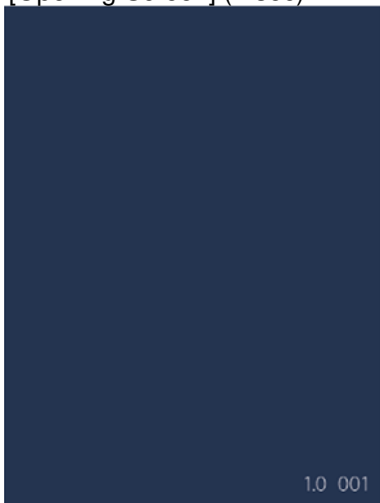
A) Key Definition (6 keys)

Front: Menu, Up, Down, Left, Right
Back: Measure

B) Operation Flow

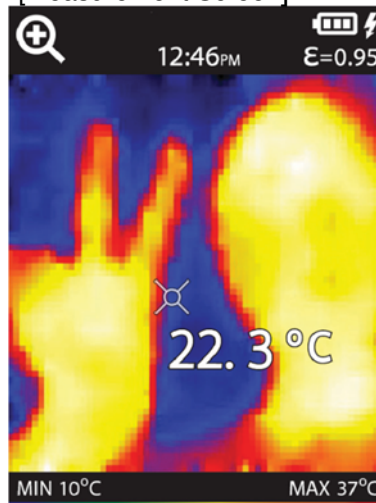
1) Power ON: Press & Hold “Left” for 3sec

[Opening Screen] (2 sec)



→


[Measurement Screen]





2)

Measurement Screen	Keys Functions
	<p>Up/Down: Increase/decrease blending level 0%, 25%, 50%, 75%, and 100%</p> <p>Left/Right: Enlarge/Reduce the thermal image</p> <p>Menu: Press to enter menu mode</p> <p>Measure: Press to capture thermal image</p> <p>Measure: Press & Hold to take video</p>

3)

Menu Screen	Keys Functions
 <p>The image shows a menu screen with a 4x4 grid of 16 icons. The icons represent various functions: a thermometer, a currency symbol (€), a rainbow circle, a person with a thermometer, °C/°F, a checkmark, an alarm clock, a target, a thermometer with a fan, a circular arrow, a moon, a BMP/JPG icon, a reset button, a globe, a rainbow bar labeled 'GUIDE', and a trash can. At the bottom of the screen is an orange bar with the word 'EMISSIVITY' in white capital letters. Above the grid, the word 'MENU' is displayed, and there is a battery and signal strength indicator in the top right corner.</p>	<p>Up/Down/Left/Right: Select the Icon Menu: Press to open the selected item Measure: Exit to [Measurement Screen]</p>

4) Sub Menu

Graphic	Items	Remark
	View Image 	To view the captured thermal image/video Keys Description: See Below

(1) Select Image/Video View

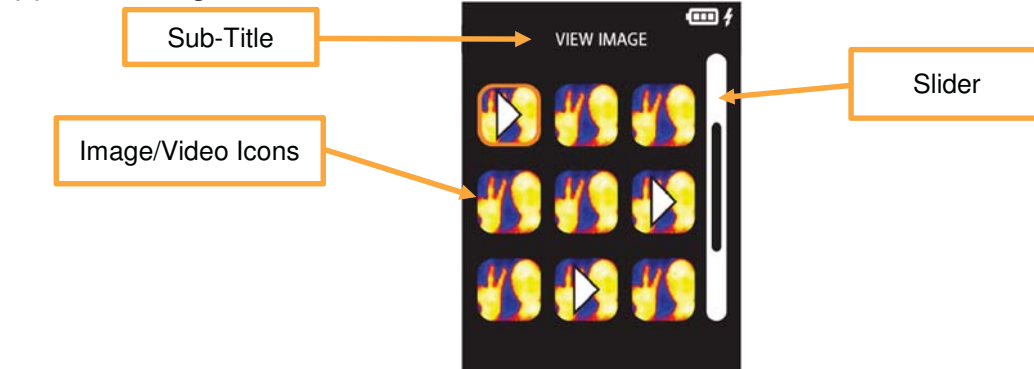


Image icon



Video icon



Selected Image icon



Selected Video icon

Up/Down/Left/Right: Move the cursor to select Image/Video icon

Menu: Press Once to enlarge the image → (2)

Menu: Press & Hold to delete the image/video → (3)

Measure: Exit to [Menu Screen]

(2) Image/Video View



Left/Right: Press to view Prev/Next Image

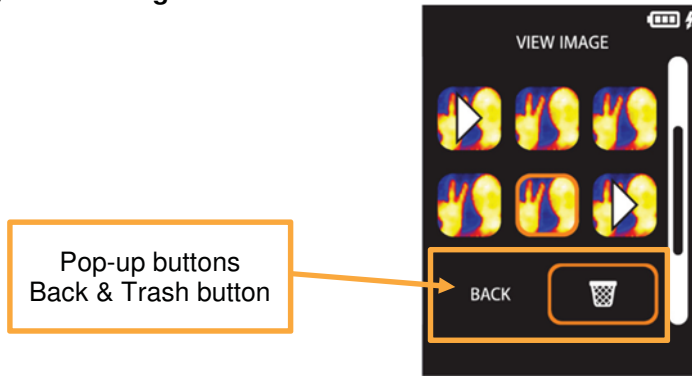
Up/Down: N/A

Menu: Press to Play/Pause video

Measure: Back to (1)



(3) Delete Image



Back button: Back to (1)







Trash button: Move the selected Image/Video to Trash



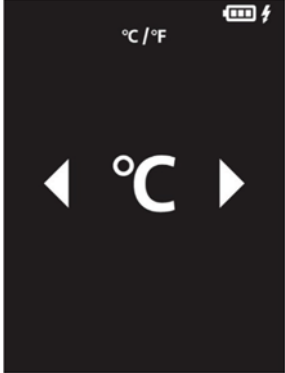



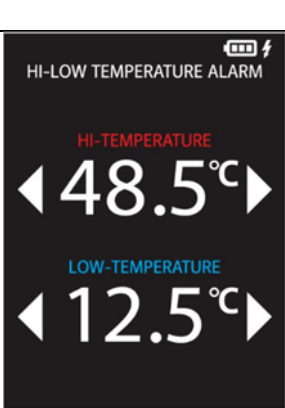

Left/Right: Select the Back or Trash button

Up/Down: N/A

Menu: Press to confirm

Measure: Back to (1)

	Emissivity 	To adjust the emissivity from 0.1 to 1.0 Keys Description: Left/Right: N/A Up/Down: Increase/Decrease Emissivity Menu: Confirm and back to [Menu Screen] Measure: Exit to [Menu Screen]
	Color Palette 	To select the thermal image color palette Keys Description: Left/Right: N/A Up/Down: Select the color palette Menu: Confirm and back to [Menu Screen] Measure: Exit to [Menu Screen] Color Palette: Color, Globow, Sepia, Ironbow, Black hot, White hot

	<p>Background Temperature</p> 	<p>To set the reflected background temperature</p> <p>Keys Description: Left/Right: N/A Up/Down: Increase/Decrease Temperature value Menu: Confirm and back to [Menu Screen] Measure: Exit to [Menu Screen]</p>
	<p>Temperature Unit</p> 	<p>To set temperature unit degree C / degree F</p> <p>Keys Description: Left/Right: Select degree C / degree F Up/Down: N/A Menu: Confirm and back to [Menu Screen] Measure: Exit to [Menu Screen]</p>
	<p>Time & Date Set</p> 	<p>To set time and date</p> <p>Keys Description: Left/Right: Select setting items YYYY → MM → DD → HH → MM → AM/PM Up/Down: Increase/Decrease the selected item Down button: Decrease the selected item Menu: Confirm and back to [Menu Screen] Measure: Exit to [Menu Screen]</p>
	<p>Hi-Low Temperature Alarm</p> 	<p>To set the high or low temperature alarm</p> <p>Keys Description: Left/Right: Decrease/Increase temperature value Up/Down: Select High/Low temperature Menu: Confirm and back to [Menu Screen] Measure: Exit to [Menu Screen]</p> <p>Clear Temperature Alarm: Menu+Measure: Press & Hold Menu button for 2 seconds, then press Measure to turn OFF Temperature Alarms Display "OFF" instead of temperature value for Hi-Temperature and Low-Temperature.</p> <p>Notes: Please note Hi-Temperature alarm must larger than Low-Temperature value. E.g. If Hi-Temperature = 48.5, the Low-Temperature can only set to 48.4.</p>

Measurement Screen

(1) No Temperature Alarm

Color Palette
Ref. Guide



Temperature Alarm Icon
appears when Hi/Low
Temperature Alarm with
value

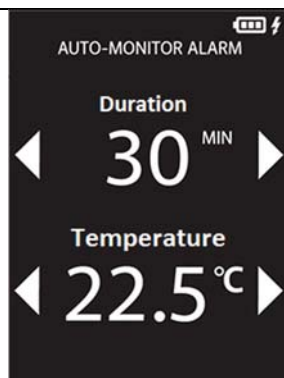
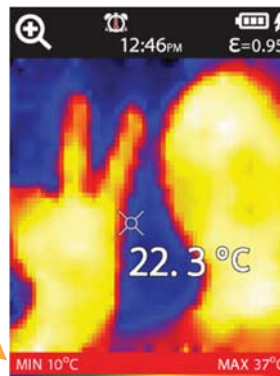
(2) Low Temperature Alarm

Change to
BLUE Color



(3) High Temperature Alarm

Change to
RED color



To capture the thermal image when over the
Temperature Alarm in a period of time

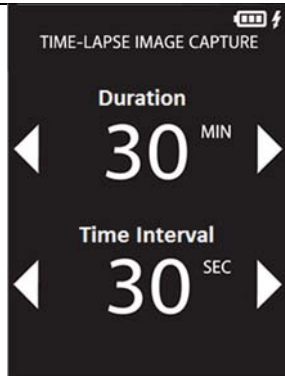
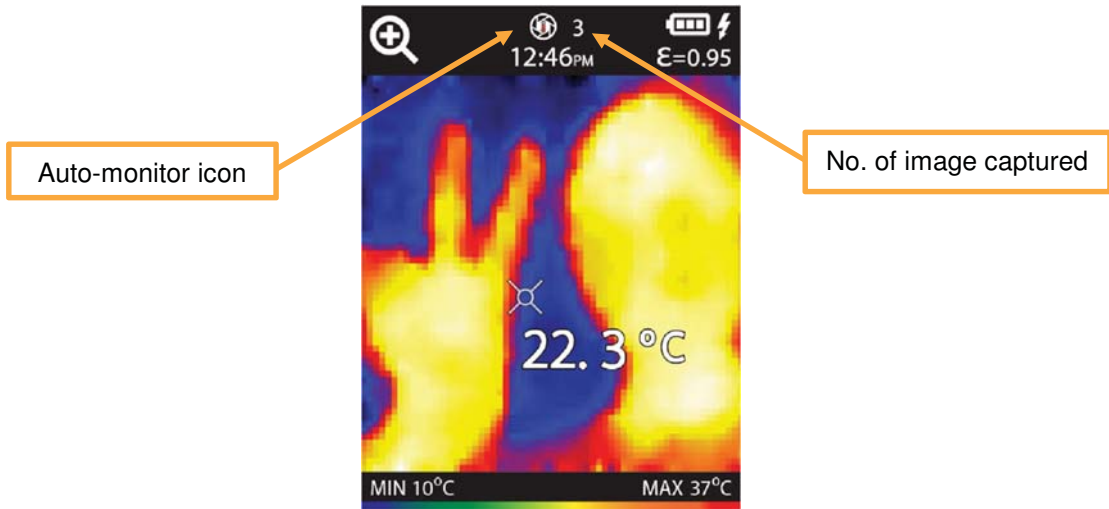
Keys Description:

Left/Right: Decrease/Increase selected item
Up/Down: Select Duration or Temperature
Menu: Confirm and back to [Menu Screen]
Measure: Exit to [Menu Screen]

Notes:

Duration: 15min, 30min, 45min, 60min, 90min, 120min

Measurement Screen



To set the time period and interval to capture thermal image

Keys Description:

Left/Right: Decrease/Increase selected item

Up/Down: Select Duration or Interval

Menu: Confirm and back to [Menu Screen]

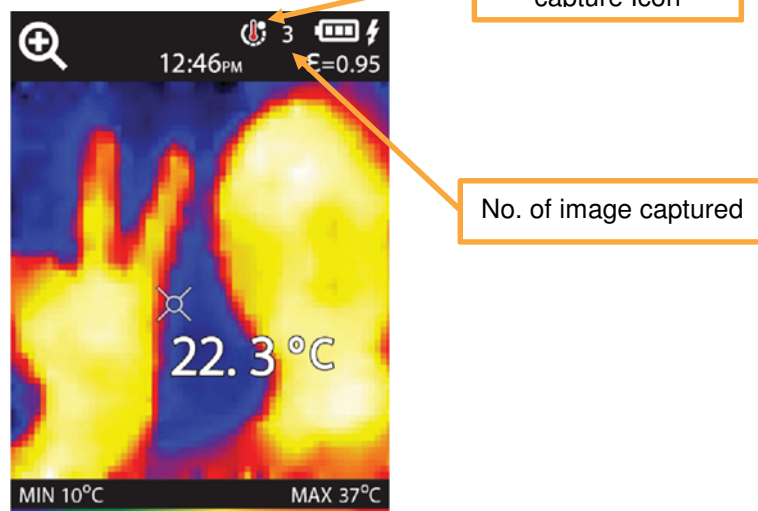
Measure: Exit to [Menu Screen]









Notes:



Duration: 15min, 30min, 45min, 60min, 90min, 120min

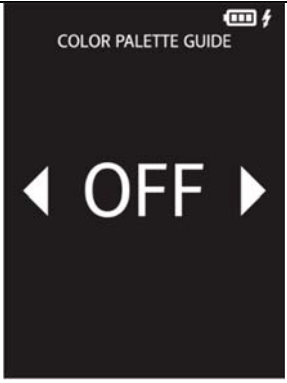

Interval: 15sec, 30sec, 45sec, 1min, 2min, 5min, 10min

Measurement Screen

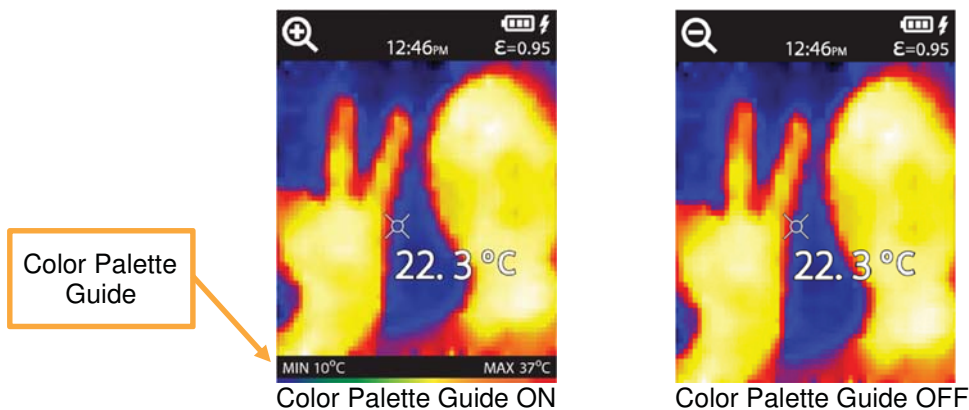


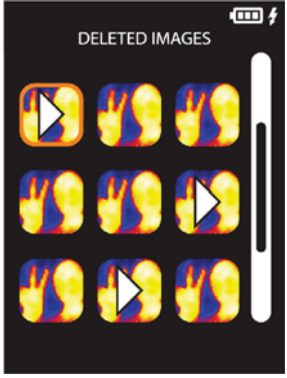

	<p>Auto-Off timer</p> 	<p>To set the auto-off timer</p> <p>Keys Description: Left/Right: Decrease/Increase selected Items Up/Down: Select MIN or SEC to adjust Menu: Confirm and back to [Menu Screen] Measure: Exit to [Menu Screen]</p> <p>Remark: 1. The minimum auto-off timer is 0min,30sec 2. The maximum auto-off timer is 30min,0sec 3. The SEC item is 0 or 30 4. The MIN item can be 00→01→02→...→30</p>
	<p>Display Brightness</p> 	<p>To set the brightness of display</p> <p>Keys Description: Left/Right: Decrease/Increase Brightness level Up/Down: N/A Menu: Confirm and back to [Menu Screen] Measure: Exit to [Menu Screen]</p>
	<p>Image format</p> 	<p>To set the image output format (Bitmap or JPEG)</p> <p>Keys Description: Left/Right: Select BMP or JPG Up/Down: N/A Menu: Confirm and back to [Menu Screen] Measure: Exit to [Menu Screen]</p>
	<p>Factory Reset</p> 	<p>To reset factory setting</p> <p>Keys Description: Left/Right: Select YES or NO Up/Down: N/A Menu: Confirm and back to [Menu Screen] Measure: Exit to [Menu Screen]</p>

	<p>Language</p> 	<p>To change the language</p> <p>Keys Description: Up/Down/Left/Right: Select the language Menu: Confirm and back to [Menu Screen] Measure: Exit to [Menu Screen]</p> <p>Notes: 1. The 1st version is English language. For other language version, it is pending.</p>
---	--	---

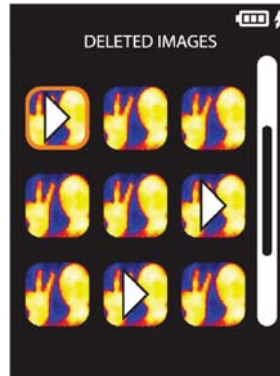
	<p>Color palette guide</p> 	<p>To turn on/off the color palette temperature reference guide</p> <p>Keys Description: Left/Right: Select ON or OFF Up/Down: N/A Menu: Confirm and back to [Menu Screen] Measure: Exit to [Menu Screen]</p>
--	---	---

Measurement Screen



	<p>Deleted Image</p> 	<p>To delete image/video permanently</p> <p>Keys Description: See Below</p>
---	---	---

(1) Deleted Image/Video



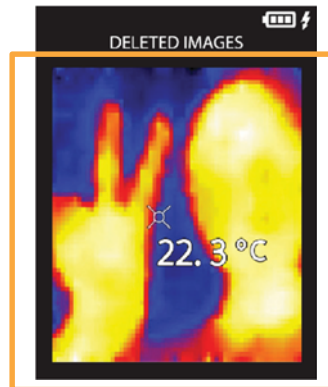
Up/Down/Left/Right: Move the cursor to select deleted Image/Video icon

Menu: Press Once to enlarge the image → (2)

Menu: Press & Hold to permanent delete the image/video → (3)

Measure: Exit to [Menu Screen]

(2) View Deleted Image/Video



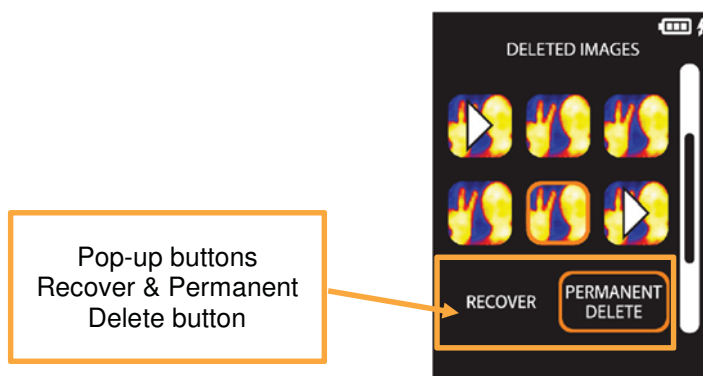
Left/Right: Press to view Prev/Next Deleted Image

Up/Down: N/A

Menu: Press to Play/Pause video

Measure: Back to (1)

(3) Permanently Delete Image/Video



Pop-up buttons
Recover & Permanent
Delete button

Left/Right: Select the Recover or Permanent Delete button

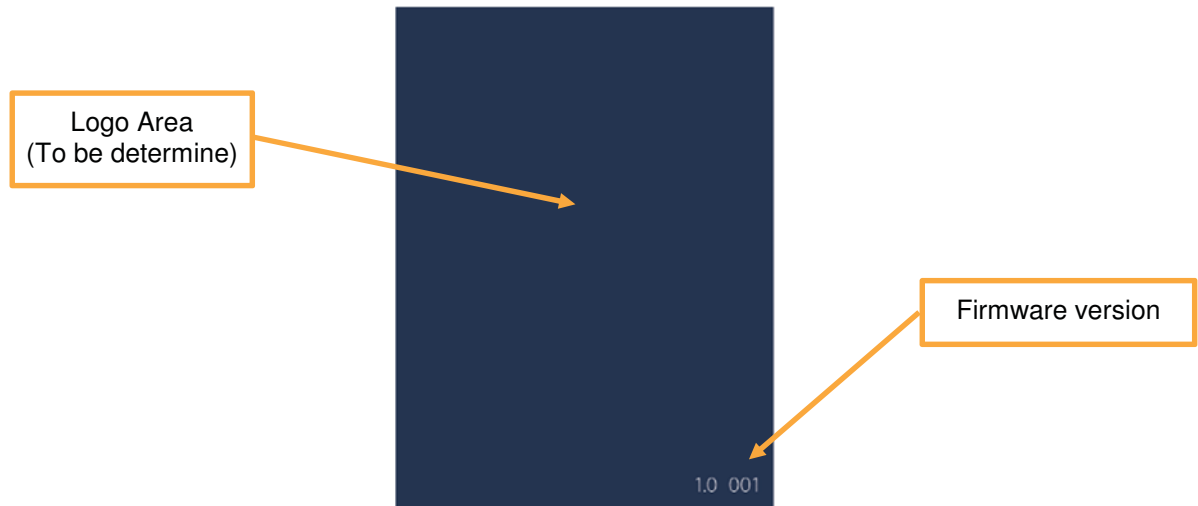
Up/Down: N/A

Menu: Press to confirm

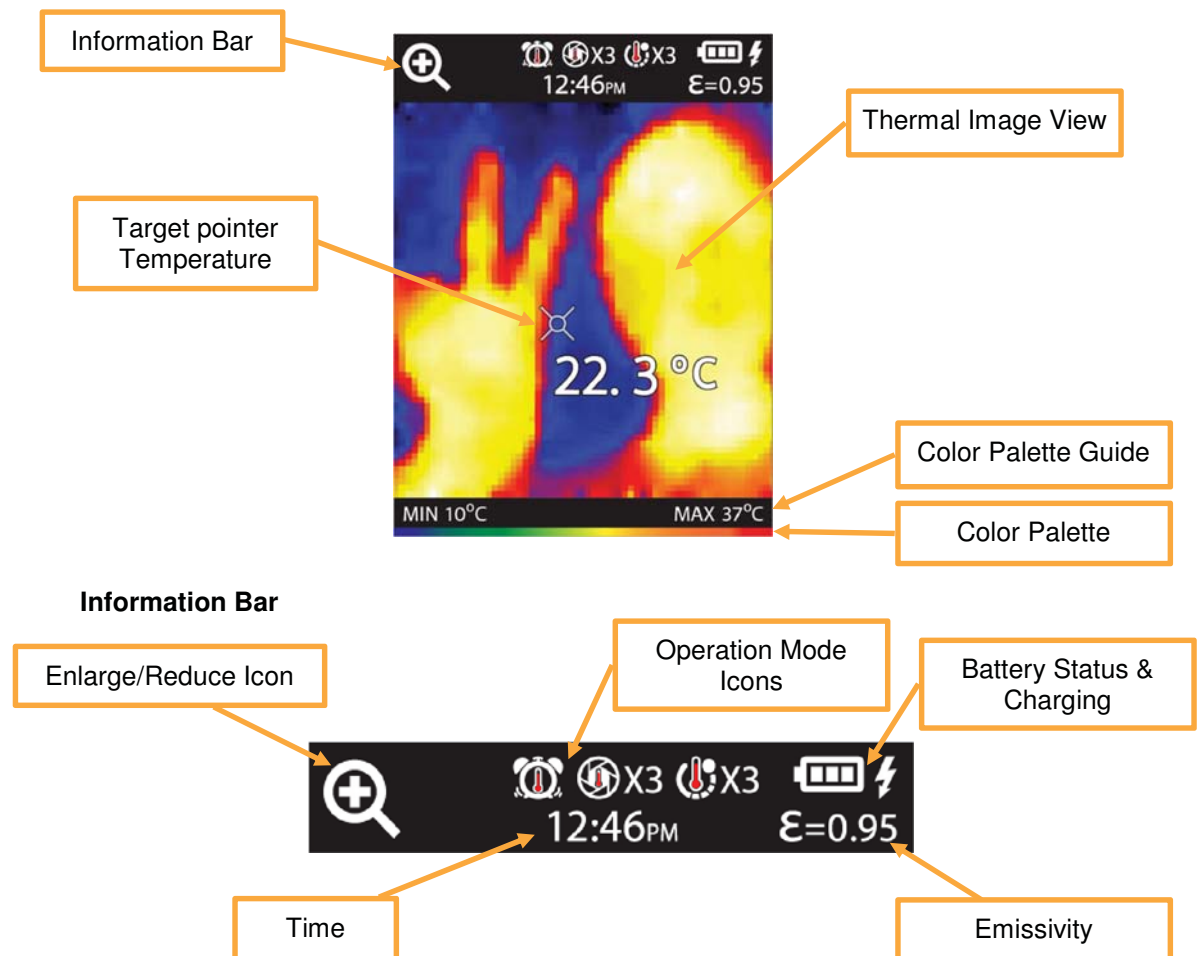
Measure: Back to (1)

C) Screen description (information included in screen):

1) [Opening Screen]



2) [Measurement Screen]



3) [Menu Screen]



	View Image - To view the captured thermal image/video
	Emissivity - To adjust the emissivity from 0.1 to 1.0
	Color Palette - To select the thermal image color palette
	Background Temperature - To set the reflected background temperature
	Temperature Unit - To set temperature unit degree C / degree F
	Time & Date Set - To set time and date
	Hi-Low Temperature Alarm - To set the high or low temperature alarm
	Auto-monitor Alarm - To capture the thermal image when over the Temperature Alarm in a period of time
	Time-lapse image capture - To set the time period for recording the thermal image
	Auto-Off Timer - To set the auto-off timer
	Display Brightness - To set the brightness of display
	Image format - To set the image output format (Bitmap or JPEG)
	Factory Reset - To reset factory setting
	Language - To change the language
	Color palette guide - To turn on/off the color palette temperature reference guide
	Trash - To delete image/video permanently

FCC Notice

This device complies with Part 15 of the FCC Rules. Operation is subject to the following two conditions:

(1) This device may not cause harmful interference, and (2) this device must accept any interference received, including interference that may cause undesired operation.

NOTE 1: This equipment has been tested and found to comply with the limits for a Class B digital device, pursuant to part 15 of the FCC Rules. These limits are designed to provide reasonable protection against harmful interference in a residential installation. This equipment generates, uses and can radiate radio frequency energy and, if not installed and used in accordance with the instructions, may cause harmful interference to radio communications. However, there is no guarantee that interference will not occur in a particular installation. If this equipment does cause harmful interference to radio or television reception, which can be determined by turning the equipment off and on, the user is encouraged to try to correct the interference by one or more of the following measures:

- Reorient or relocate the receiving antenna.
- Increase the separation between the equipment and receiver.
- Connect the equipment into an outlet on a circuit different from that to which the receiver is connected.
- Consult the dealer or an experienced radio/TV technician for help.

NOTE 2: Any changes or modifications to this unit not expressly approved by the party responsible for compliance could void the user's authority to operate the equipment.