

Getting to Know Your Drone

PLEASE READ ALL WARNINGS AND INSTRUCTIONS PRIOR TO USE. KEEP THIS DOCUMENT AS IT CONTAINS IMPORTANT INFORMATION ABOUT YOUR DRONE.



14+

1. PREPARE FOR FLIGHT

- Drone must be charged before each use (Cable included)
- Indicator light will turn off once fully charged
- Install batteries in remote

2. PAIR YOUR DRONE

Before each flight pair the remote with the drone:

1. Turn your drone on and place on a flat, level surface
2. Turn on the remote on and move the left joystick up, then down
3. The beep will indicate successful pairing
4. Repeat steps 1 and 2 if necessary

3. REMOTE CONTROL OVERVIEW

Practice flying your drone below 100 feet and at low speeds until comfortable with all controls to avoid unnecessary damage or injury

- Left joystick: left/right controls spin and Up/Down controls elevation
- Right joystick: controls flight direction
- Direction Trim: use to eliminate drift
- To cut power to drone, move left joystick to down position

QUESTIONS OR CONCERN?

PLEASE GIVE US A CALL - WE'RE HERE TO HELP

ADULT ASSEMBLY, CHARGING, AND BATTERY INSTALLATION IS REQUIRED. ADULT SUPERVISION IS REQUIRED.

CUSTOMER SERVICE

(800) 374-2744

Before calling please locate the 10-digit code printed on the back of your remote

Shaper, Integre® name and logo are registered trademarks. Distributed by Integre, Inc., Irvine, CA 92618. All rights reserved. Distributed by MerchSource, LLC, Irvine, CA 92618. © 2015 Integre, Inc. All rights reserved. For more information, please visit us at 1-800-374-2744. The artwork and design of this manual are protected by US copyright law and may not be reproduced, distributed, published or used for any purpose without prior written permission. It is not permitted to alter, remove or reproduce any trademarks or copyright notice from this manual.

KEEP THIS INSTRUCTION MANUAL AS IT CONTAINS IMPORTANT INFORMATION FOR FUTURE REFERENCE.

One of our products is a lithium-ion battery. The picture on the manual may differ slightly from the actual product.

PATENT PENDING
Model No.101428



WARNING:
CHOKING HAZARD - Small Parts. Not for children under 3 years.

Printed in China.

INTRODUCTION

Congratulations on your purchase of the Rechargeable 2.4 GHz Car Drone. Get ready to soar to new heights. Master the art of drone flying with remote control maneuverability. This lightweight drone will provide hours of fun.

SPECIFICATIONS

Drone Battery: 800 mAh Li-po
Remote Controller Battery: 4 x 1.5V "AA"
Charging Time: 120 minutes
Maximum Recommended Altitude: 100 ft.

TABLE OF CONTENTS

General Warnings	Page 1
Contents, Remote Battery Installation, Battery Warnings	Page 2
Charging LiPo Battery and Replacing Propellers	Page 3
Remote Overview	Page 4
Operating Drone	Page 5
Align and Tips	Page 6

READ ALL WARNINGS AND PRECAUTIONS BEFORE USE

SAFETY WARNINGS

- Not recommended for children under 14 years of age. As with all electrical products, precautions should be observed during handling and use to reduce the risk of electrical shock.
- Adult supervision is required at all times.
- Drive drone only on smooth flat surfaces.
- Never fly drones above or near people, sudden changes in wind or other conditions could lead to unexpected crashes.
- Always use caution when flying drone vehicles, obey relevant laws, respect the privacy and property rights of others.
- The drone shall never be modified or used for anything except its intended purpose.
- Before each use, an adult should review the product and battery to determine that no damage or hazards exist.
- **DO NOT TOUCH SPINNING PROPELLERS.**
 - o Prevent contact with spinning blades by turning off remote prior to handling drone.
- **Use caution and pay attention to your surroundings while operating drone.**
- **Do not fly drone into animals, people, or inanimate objects.**
- Keep drone away from power lines, buildings, trees, public areas, and any other potentially hazardous areas.
- Do not operate in rain, heavy wind, and/or any type of severe weather.
- Do not land drone on wet surfaces.
- Never touch or allow others to touch drone while it is flying.
- Always turn drone off when it is not in use.
- Always fly drone in large open areas.
- The drone may cause continuing capabilities if its distance is more than maximum recommended altitude or 100 ft. Keep below 100 ft. to avoid potential crashing risk.

WARNINGS: Changes or modifications to this unit not expressly approved by the party responsible for compliance could void the user's authority to operate the equipment.

Fly-aways are the responsibility of the individual pilot and will not be replaced by the manufacturer.

The Federal Aviation Administration (FAA) has issued a notice of enforcement action against anyone who flies a drone without proper registration. Although the FAA does not require the drone to be registered, anyone who flies a drone without proper registration will be fined \$250,000 and/or imprisoned for up to 3 years.

Note: This equipment has been tested and found to comply with the limits for Class B digital device, pursuant to part 15 of the FCC Rules. These limits are designed to provide reasonable protection against harmful interference in a residential installation. This equipment generates, uses and can radiate radio frequency energy and, if not installed and used in accordance with the instructions, may cause harmful interference to radio communications. However, there is no guarantee that interference will not occur in a particular installation. If this equipment does cause harmful interference to radio or television reception, which can be determined by turning the equipment off and on, the user is encouraged to try to correct the interference by one or more of the following measures:

- Reorient or relocate the receiving antenna.
- Increase the separation between the equipment and receiver.
- Connect the equipment into a circuit on a circuit different from that to which the receiver is connected.
- Consult the dealer or an experienced radio/TV technician for help.

TROUBLESHOOTING:

When remote switch is turned on, the remote light does not illuminate.

1. Check that batteries in the remote are installed correctly OR
2. Replace with new batteries

When the remote is switched on, the remote LED is flashing and remote is beeping:

1. Replace batteries are low; replace them with new batteries
2. Replace with the proper number replacement blade and try flying again.

Drone and remote properly pair, but the drone will not lift-off:

- 1) Drone Li-Po needs charging. Use charging cable to connect the drone to power source.
- 2) After attempting the drone, the drone flight is very unstable and cannot fly properly.

- 1) One or more blades are not fully damaged;
- 2) Turn off the drone and remote.
- 3) Replace with the proper number replacement blade and try flying again.

After inspecting the drone, the drone is unstable:

- 1) Pull the left remote control lever to the left bottom and put the right remote control lever to the right bottom at the same time which results the drone (lights will flash quickly).
- 2) If the above does not resolve the issue, reboot the drone and controller and pair again.

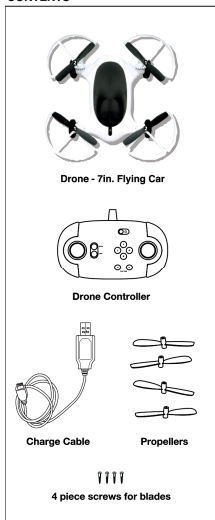
Remote Controller and Drone can not be paired:

- 1) Press the "Pair" button on the remote controller.
- 2) If the above does not resolve the issue, reboot the drone and controller and pair again.

Note: If there are 2 sets of Drones within 4 meters for Pairing, you must pair one successfully before pairing the second set.

DRONE - 7-IN. FLYING CAR

CONTENTS



REMOTE BATTERY INFORMATION

1. Unscrew the remote battery door using a Phillips head screwdriver (not included).
2. Install 4 "AA" batteries as shown in the diagram above.
3. Replace and close battery compartment.

LITHIUM-POLYMER BATTERY WARNING

There is a risk of fire and personal injury if Li-Po battery is punctured, damaged or misused.

- Never expose battery to extreme temperatures or moisture.
- Do not subject battery to strong impacts.
- Always keep battery away from flammable materials.
- Only use manufacturer specified battery(ies), charger(s), and/or adapters, if applicable.
- Battery is not serviceable.
- Let battery cool to room temperature before charging.
- While charging, never leave battery unattended.
- Recycle or dispose of battery according to federal, state and local laws.

KEEP THIS INSTRUCTION MANUAL FOR REFERENCE

BATTERY WARNING - ALKALINE (AA)

- Do not mix old and new batteries.
- Insert batteries, correct polarity, in or alkaline battery.
- Insert batteries using the correct polarity. Do not short circuit the supply terminal.
- Only use manufacturer specified battery(ies), charger(s), and/or adapters, if applicable, identified by the manufacturer.
- Always use, replace, and/or charge if appropriate battery under adult supervision.

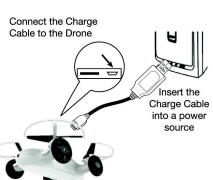
Printed in China.

DRONE - 7-IN. FLYING CAR

CHARGING BATTERY

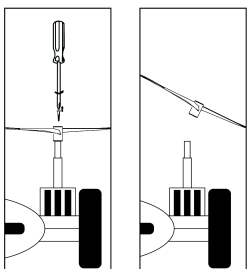
Note: The Battery Charger will light up when it is charging the battery and turn off when the battery is fully charged. Charge time is approximately 120 minutes.

1. Turn off the drone before charging.
2. Connect the Battery Charger Cable to the port found on the rear of the drone.
3. Connect USB connector to the power source.



Replacing Propellers

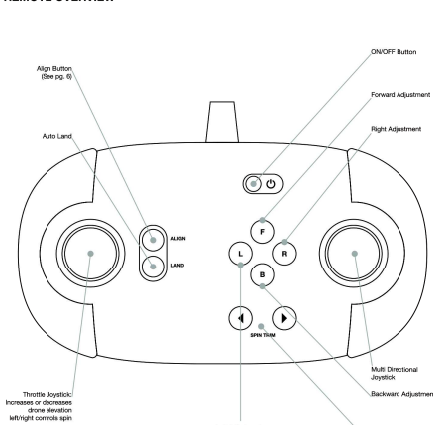
1. Propellers are secured by screws. Only an adult should replace blades. To remove, unscrew the blade and pull up.
2. Replace propellers by following the diagram on the right.
3. Each blade spins differently. Blade 1 turns counter clockwise and Blade 2 turns clockwise.



Printed in China.

DRONE - 7-IN. FLYING CAR

REMOTE OVERVIEW



Printed in China.

DRONE - 7-IN. FLYING CAR

OPERATING DRONE

Step 1 - Pre-Flight Checklist

- Read all warnings and instructions
- Install remote batteries, page 2
- Charge batteries, page 3
- Make sure that drone and remote are powered off.

Step 2 - Choosing a location

- Drone is designed to be flown/driven indoors and outdoors
- Always make sure you have enough space to fly drone
- Always follow warnings, page 1.

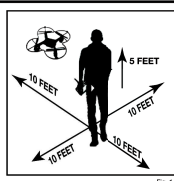


Fig. 1

Step 3 - Driving Mode



Step 4 - Lift Off



1. Bring the car to a stop.
2. Slowly and carefully press the Thrust Joystick up. Drone will begin to move. You can compensate to some of the drone's drifting by using the Multi-Directional Button or by following step 5. You may need to practice this step several times before successfully getting the drone into the air.

Printed in China.

DRONE - 7-IN. FLYING CAR

OPERATING DRONE (Cont.)

- Step 5 - Operating Drone in Flight**
Follow this step if your drone begins to drift while take off or during flight.
F. Drone drifts backwards: Press the Forward Adjustment Button.
b. Drone drifts forwards: Press the backwards Adjustment Button.
L. Drone drifts right: Press the Left Adjustment Button.
R. Drone drifts Left: Press the Right Adjustment Button.

Step 6 - Landing Drone

- Make sure you have achieved level, balanced flight, where the drone is neither climbing nor descending. This mode allows you to safely and slowly land your drone without having to control the speed.
- The ideal auto landing height is 20ft.
- Press the land button to trigger auto land. Remote will beep continuously until you exit the auto land mode.
- To steer the drone during landing, use the right control until drone has reached the ground.
- Press the land button again to exit auto landing mode.

Step 7 - Retrieving Drone

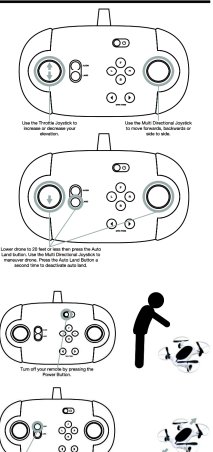
1. Turn off your remote by pressing the Power Button. This will stop you from accidentally turning the propellers on.
2. Make sure the propellers have stopped spinning then pick up your drone.

Note: You will need to pair your drone again before your next flight.

Align

Press the Align Button to turn Align mode ON and then again to turn off.

- In this mode, the drone will always move in the direction you press the Multi-Directional Button no matter which way the drone faces
- Do not crash drone into sand or dirt. Drone gears may become clogged.
- When first learning to fly, practice lifting off and hovering.
- Stay several feet from walls and buildings.



Printed in China.

6