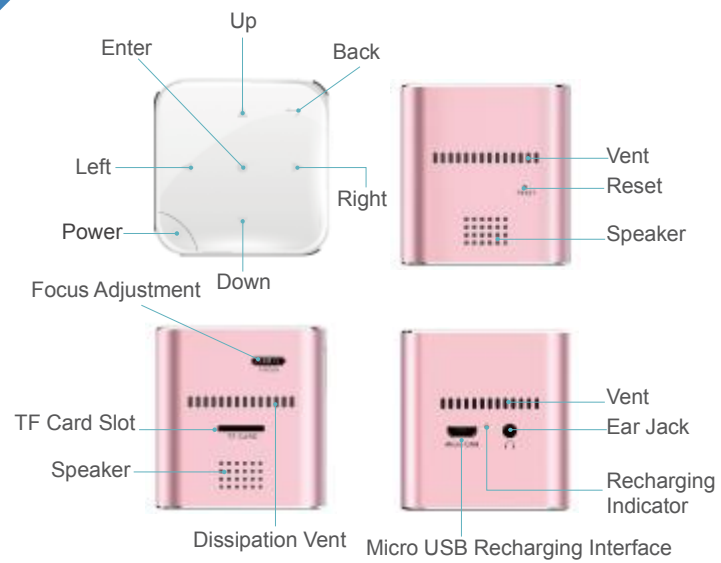


P6 Smart Projector User Manual



2 Introduction of appearance



1.How to turn on/off

3



1.Click and hold the power button for 5 seconds to turn on or off the projector

2.Projection Focus/Brightness Adjustment

Focus Adjustment

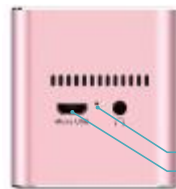


1.Roll clockwise or anti-clockwise the focusadjustment until having vivid projection image.

2.Go to "Setting"page,and then "Brightness Setting" to adjust projection

4

Recharging



LED on for being recharged, while LED off for recharged fully.

Recharging Indicator

Micro USB Recharging Interface

Specifications

Brightness: 80 ANSI Lumens

Screen Size: 5inch~120inch Projection Size:5"-200"

Resolution: VGA 640X480(Throw Ratio:4:3 Contrast Ratio:1000:1)

Lamp life: 30,000hours

Wireless connection: Wifi 2.4

Battery: Max 1.5hours use

8ohm/1w Speaker

Other I/O interfaces:USB OTG,3.5mm Earphone jack

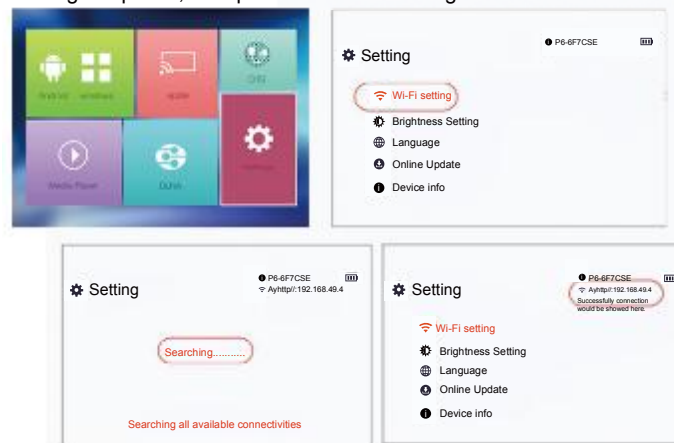
Available Mirroring:Miracast,AirPlay,Windows

External TF Card:Max 128G

Wifi Setting

Go to Setting page, and then the Wi-Fi Setting. Pick up a network after all local connectivities are searched. Connection would be showed on the right-top side, once password entered is right.

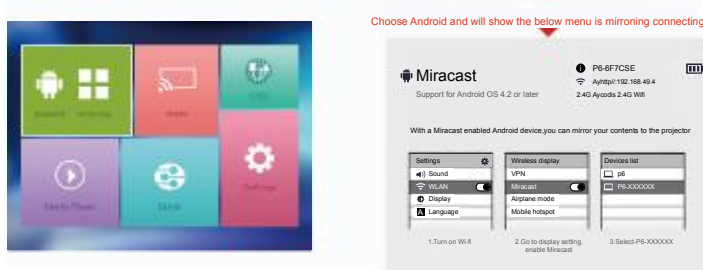
5



6 Miracast Mirroring For Android Phones

1.Orimag P6 is only allowed to miracast the phones of Android 4.4 or above. Miracast would be renamed as Smartview or else instead of Miracast itself, depends on different phones.

Enter "Android/windows"page and keep projector staying in this page,as showed below;

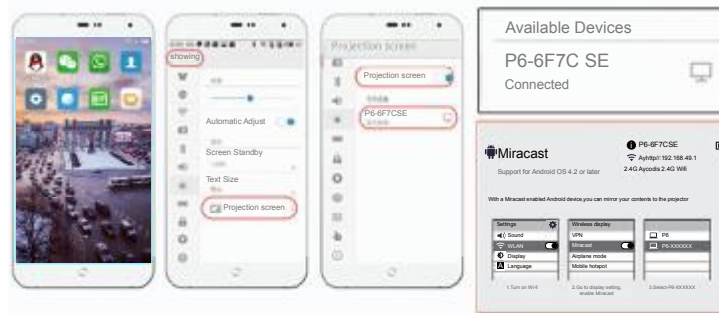


Miracast connections--Android mobile phone

7

2. Enable screen projection on phone. Search local wifi hotspots to find out Orimag P6's connectivity, commonly it is named as "P6-*****", and enter without password. Here is done the connection between P6 and an Android Phone.

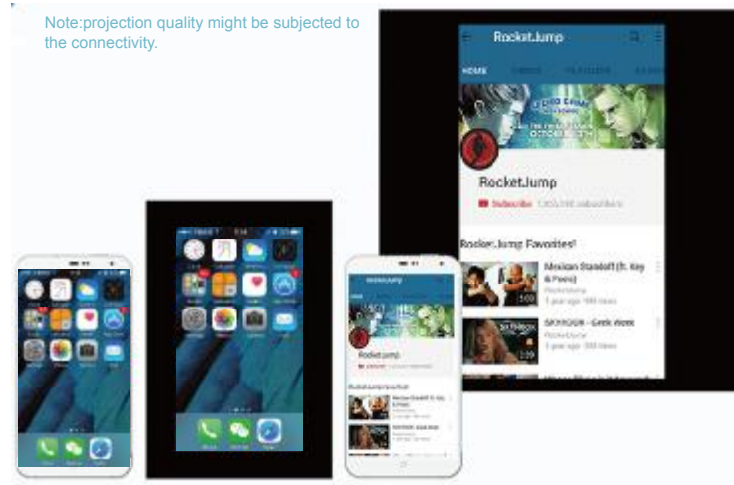
(Note: The demonstration phone is Meizu M463C.)



8 Airpaly Mirroring for Iphones

Here is done too the projection of the phone.

Note:projection quality might be subjected to the connectivity.



Miracast Disconnection

9

Turn off screen projection on the phone, to quit the projection.



10

Airpaly Mirroring for Iphones

Enter the "Apple"page,and keep staying in this page.



Airpaly Mirroring for Iphones

11

Search on phone the local wifi hotspots and find out Orimag P6's connectivity, enter without password.

Once the connection done, switch on "Airplay Mirroring" from the control panel on the phone. Here comes the projection.



12 Airplay to quit connection

3.shut down mobile phone mirror output to quit connection



OTG CONNECTION-APPLE IPHONE

13

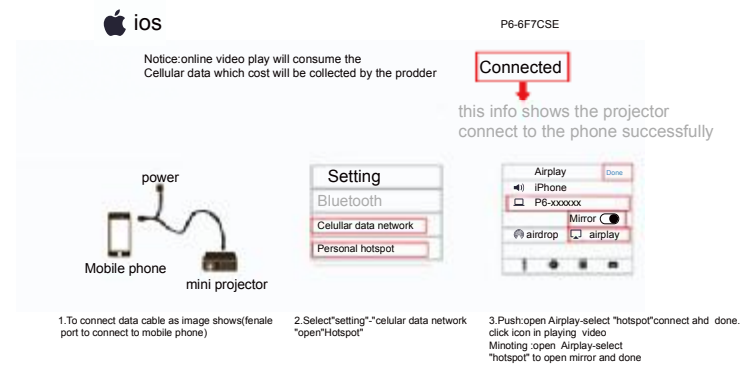
1. Turn on personal hotspot, Select "setting" on the desktop and then click "WIFI setting" to connect the personal hotspot. when connected successfully turn back to the desktop.pls keeping turn on the personal hotspot.



14

OTG CONNECTION-APPLE IPHONE

2. Connect the projector with your phone by OTG cable, then select the "OTG" and click to turn the below right image.waitting for automatic connection caption as the below image shows.



OTG CONNECTION-APPLE IPHONE

15

3.Slide up from bottom of the phone and click the "Airplay"
to use the mirroring function.



16 OTG to quit connection

4. Shut down mobile phone mirror output to quit connection.



CONNECT TO WINDOWS SYSTEM

17

Same Wi-Fi “will be shared between the mobile phone and projector.”

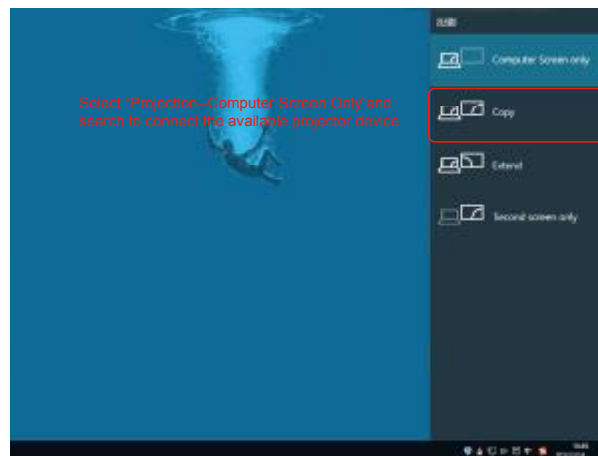
1. Select “Windows” from desktop to enter the interface as below right image shows



18

Connect to Windows system

2.To press Fn+F3 to open "Copy" and select other projection modes



Connect to Windows system

3.3. Searching and connect the projector device until it's projection successfully.

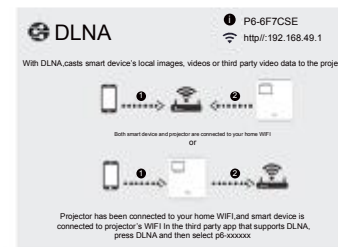
19



20

DLNA push

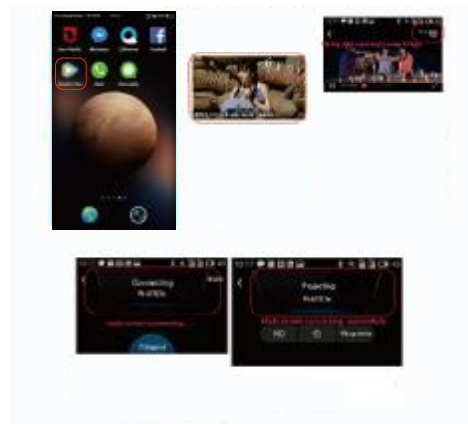
- 1.DLNA:to transfer local images videos or 3rd party video data to projector (need in the same Wi-Fi Router for smart device and projector)
- 2.And otherwise,this device also can connect to Iphone cellular personal hotspot,and show the same screen when surfing on the phone net.



DLNA push

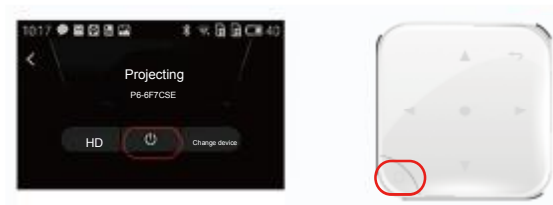
21

3.As the below picture shows.Click the TV Screen Mirroring on the Vedio App.Please Note:Most Vedio App support the DLNA function(such as Tecent video, Thunder KANKAN, PPTV,YOUKU,SOHU video etc.),while still someAPP does not support.



22 DLNA disconnection

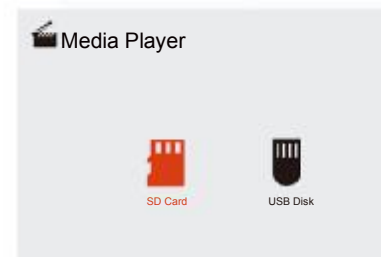
3. To click quit projection or disconnect on mobile phone,
or click "return" button of projector to quit.



Player

23

To play videos and images from TF card or flash disk by selecting "player"
Attention : To change volume size and forward or previous from projector as well as smart device.



Precautions

- To prevent internal overheating,install the projector in a well-ventilated place
- Do not place anything near the projector that may block its air vents if the air vents are blocked,the internal temperature of the projector will increase.
- Be sure to prevent foreign objects such as paper debris from entering the projector.
- Do not install the projector in a hot or humid environment.
- Never open any cover on the projector.

This device complies with part 15 of the FCC Rules. Operation is subject to the following two conditions: (1) this device may not cause harmful interference, and (2) this device must accept any interference received, including interference that may cause undesired operation.

Any changes or modifications not expressly approved by the party responsible for compliance could void the user's authority to operate the equipment.

NOTE: This equipment has been tested and found to comply with the limits for a Class B digital device, pursuant to Part 15 of the FCC Rules. These limits are designed to provide reasonable protection against harmful interference in a residential installation. This equipment generates, uses and can radiate radio frequency energy and, if not installed and used in accordance with the instructions, may cause harmful interference to radio communications. However, there is no guarantee that interference will not occur in a particular installation.

If this equipment does cause harmful interference to radio or television reception,

which can be determined by turning the equipment off and on, the user is encouraged to try to correct the interference by one or more of the following measures:

- Reorient or relocate the receiving antenna.
- Increase the separation between the equipment and receiver.
- Connect the equipment into an outlet on a circuit different from that to which the receiver is connected.
- Consult the dealer or an experienced radio/TV technician for help.

The device has been evaluated to meet general RF exposure requirement. The device can be used in portable exposure condition without restriction.

FCCID:2ALY3-P6