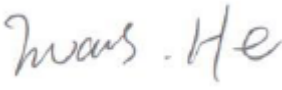
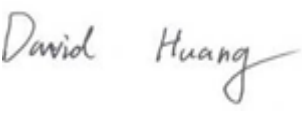



EMC TEST REPORT



Report No.: 17070339-FCC-E V2

Supersede Report No: N/A

Applicant	Draper, Inc.	
Product Name	Handheld Remote	
Model No.	RFR	
Serial No.	N/A	
Test Standard	FCC Part 15 Subpart B Class B:2016, ANSI C63.4: 2014	
Test Date	May 05 to May 17, 2017	
Issue Date	June 01, 2017	
Test Result	<input checked="" type="checkbox"/> Pass <input type="checkbox"/> Fail	
Equipment complied with the specification		<input checked="" type="checkbox"/>
Equipment did not comply with the specification		<input type="checkbox"/>
		
Evans He Test Engineer	David Huang Checked By	
This test report may be reproduced in full only Test result presented in this test report is applicable to the tested sample only		

Issued by:

SIEMIC (SHENZHEN-CHINA) LABORATORIES

Zone A, Floor 1, Building 2 Wan Ye Long Technology Park

South Side of Zhoushi Road, Bao' an District, Shenzhen, Guangdong China 518108

Phone: +86 0755 2601 4629801 Email: China@siemic.com.cn

Laboratories Introduction

SIEMIC, headquartered in the heart of Silicon Valley, with superior facilities in US and Asia, is one of the leading independent testing and certification facilities providing customers with one-stop shop services for Compliance Testing and Global Certifications.



In addition to testing and certification, SIEMIC provides initial design reviews and compliance management throughout a project. Our extensive experience with China, Asia Pacific, North America, European, and International compliance requirements, assures the fastest, most cost effective way to attain regulatory compliance for the global markets.

Accreditations for Conformity Assessment

Country/Region	Scope
USA	EMC, RF/Wireless, SAR, Telecom
Canada	EMC, RF/Wireless, SAR, Telecom
Taiwan	EMC, RF, Telecom, SAR, Safety
Hong Kong	RF/Wireless, SAR, Telecom
Australia	EMC, RF, Telecom, SAR, Safety
Korea	EMI, EMS, RF, SAR, Telecom, Safety
Japan	EMI, RF/Wireless, SAR, Telecom
Singapore	EMC, RF, SAR, Telecom
Europe	EMC, RF, SAR, Telecom, Safety

Test Report	17070339-FCC-E V2
Page	3 of 27

This page has been left blank intentionally.

CONTENTS

1. REPORT REVISION HISTORY	5
2. CUSTOMER INFORMATION.....	5
3. TEST SITE INFORMATION	5
4. EQUIPMENT UNDER TEST (EUT) INFORMATION	6
5. TEST SUMMARY	7
6. MEASUREMENTS, EXAMINATION AND DERIVED RESULTS.....	8
6.1 AC POWER LINE CONDUCTED EMISSIONS.....	8
6.2 RADIATED EMISSIONS.....	10
ANNEX A. TEST INSTRUMENT.....	15
ANNEX B. EUT AND TEST SETUP PHOTOGRAPHS.....	16
ANNEX C. TEST SETUP AND SUPPORTING EQUIPMENT	24
ANNEX D. USER MANUAL / BLOCK DIAGRAM / SCHEMATICS / PARTLIST	26
ANNEX E. DECLARATION OF SIMILARITY	27

1. Report Revision History

Report No.	Report Version	Description	Issue Date
17070339-FCC-E	NONE	Original	May 18, 2017
17070339-FCC-E V1	V1	Changed the Applicant adress	May 31, 2017
17070339-FCC-E V2	V2	Changed the Applicant Name	June 01, 2017

2. Customer information

Applicant Name	Draper, Inc.
Applicant Add	411 S. Pearl St.PO Box 425,Spiceland,Indiana,United States
Manufacturer	Harda (Xiamen) Plastic Co.,Ltd
Manufacturer Add	Building 37#, Huli Zone, TongAn Industrial Area, Xiamen

3. Test site information

Lab performing tests	SIEMIC (Shenzhen-China) LABORATORIES
Lab Address	Zone A, Floor 1, Building 2 Wan Ye Long Technology Park South Side of Zhoushi Road, Bao' an District, Shenzhen, Guangdong China 518108
FCC Test Site No.	718246
IC Test Site No.	4842E-1
Test Software of Radiated Emission	Radiated Emission Program-To Shenzhen v2.0
Test Software of Conducted Emission	EZ-EMC(ver.lcp-03A1)

4. Equipment under Test (EUT) Information

Description of EUT:	Handheld Remote
Main Model:	RFR
Serial Model:	N/A
Antenna Gain:	1.5 dBi
Antenna Type:	Fixed antenna
Input Power:	DC 3V
Equipment Category :	JBP
Type of Modulation:	GFSK
RF Operating Frequency (ies):	2402-2480 MHz
Number of Channels:	40CH
Port:	N/A
Trade Name :	N/A
FCC ID:	2ALWORFR
Date EUT received:	May 04, 2017
Test Date(s):	May 05 to May 17, 2017

5. Test Summary

The product was tested in accordance with the following specifications.

All testing has been performed according to below product classification:

FCC Rules	Description of Test	Result
§15.107; ANSI C63.4: 2014	AC Power Line Conducted Emissions	N/A
§15.109; ANSI C63.4: 2014	Radiated Emissions	Compliance

Measurement Uncertainty


Parameter	Uncertainty
AC Power Line Conducted Emissions (150kHz~30MHz)	±3.11dB
Radiated Emission(30MHz~1GHz)	±5.12dB
Radiated Emission(1GHz~6GHz)	±5.34dB

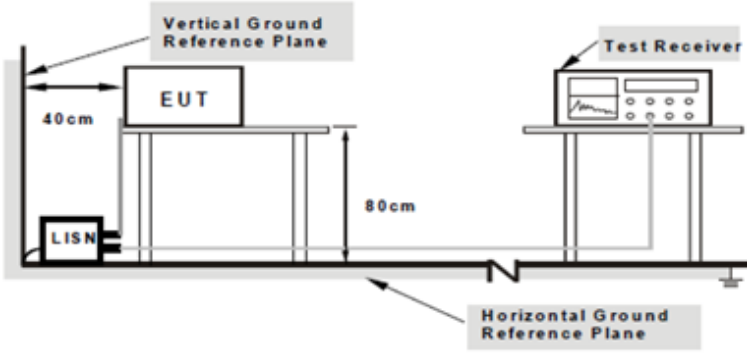
6. Measurements, Examination And Derived Results

6.1 AC Power Line Conducted Emissions

Temperature	---
Relative Humidity	---
Atmospheric Pressure	---
Test date :	---
Tested By :	---

Requirement(s):

Spec	Item	Requirement	Applicable														
47CFR§15.107	a)	For Low-power radio-frequency devices that is designed to be connected to the public utility (AC) power line, the radio frequency voltage that is conducted back onto the AC power line on any frequency or frequencies, within the band 150 kHz to 30 MHz, shall not exceed the limits in the following table, as measured using a 50 [mu] H/50 ohms line impedance stabilization network (LISN). The lower limit applies at the boundary between the frequencies ranges.															
		<table><tr><th rowspan="2">Frequency ranges (MHz)</th><th colspan="2">Limit (dBµV)</th></tr><tr><th>QP</th><th>Average</th></tr><tr><td>0.15 ~ 0.5</td><td>66 – 56</td><td>56 – 46</td></tr><tr><td>0.5 ~ 5</td><td>56</td><td>46</td></tr><tr><td>5 ~ 30</td><td>60</td><td>50</td></tr></table>	Frequency ranges (MHz)	Limit (dBµV)		QP	Average	0.15 ~ 0.5	66 – 56	56 – 46	0.5 ~ 5	56	46	5 ~ 30	60	50	
Frequency ranges (MHz)	Limit (dBµV)																
	QP	Average															
0.15 ~ 0.5	66 – 56	56 – 46															
0.5 ~ 5	56	46															
5 ~ 30	60	50															

Test Setup	 <p>Note: 1.Support units were connected to second LISN. 2.Both of LISNs (AMN) are 80cm from EUT and at least 80cm from other units and other metal planes support units.</p>
------------	---

Procedure	<ol style="list-style-type: none"> The EUT and supporting equipment were set up in accordance with the requirements of the standard on top of a 1.5m x 1m x 0.8m high, non-metallic table. The power supply for the EUT was fed through a 50Ω /50mH EUT LISN, connected to filtered mains.
-----------	--

	<p>3. The RF OUT of the EUT LISN was connected to the EMI test receiver via a low-loss coaxial cable.</p> <p>4. All other supporting equipment were powered separately from another main supply.</p> <p>5. The EUT was switched on and allowed to warm up to its normal operating condition.</p> <p>6. A scan was made on the NEUTRAL line (for AC mains) or Earth line (for DC power) over the required frequency range using an EMI test receiver.</p> <p>7. High peaks, relative to the limit line, The EMI test receiver was then tuned to the selected frequencies and the necessary measurements made with a receiver bandwidth setting of 10 kHz.</p> <p>8. Step 7 was then repeated for the LIVE line (for AC mains) or DC line (for DC power).</p>
Remark	The EUT is powered by battery , so there is not necessary to test AC power.
Result	<input type="checkbox"/> Pass <input type="checkbox"/> Fail <input checked="" type="checkbox"/> N/A

Test Data ☐ Yes ☒ N/A

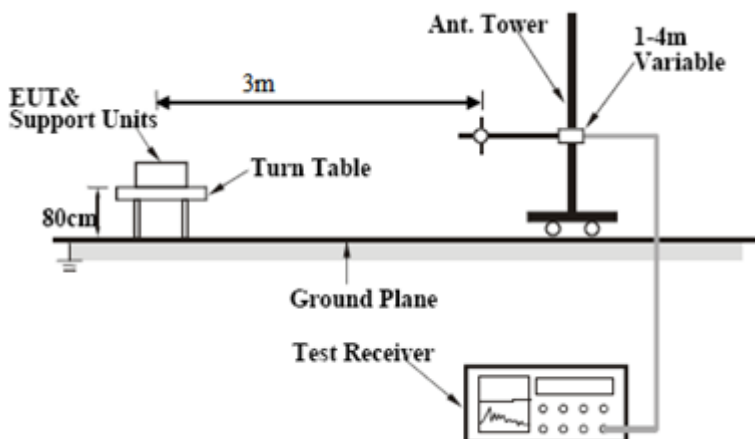
Test Plot ☐ Yes (See below) ☒ N/A

6.2 Radiated Emissions

Temperature	23 °C
Relative Humidity	52%
Atmospheric Pressure	1010mbar
Test date :	May 10, 2017
Tested By :	Evans He

Requirement(s):

Spec	Item	Requirement	Applicable	
47CFR§15.109(d)	a)	Except higher limit as specified elsewhere in other section, the emissions from the low-power radio-frequency devices shall not exceed the field strength levels specified in the following table and the level of any unwanted emissions shall not exceed the level of the fundamental emission. The tighter limit applies at the band edges	<div><input checked="" type="checkbox"/></div>	
		Frequency range (MHz)		Field Strength (µV/m)
		30 – 88		100
		88 – 216		150
		216 960		200
		Above 960		500

Test Setup	
------------	--

Procedure	<ol style="list-style-type: none"> The EUT was switched on and allowed to warm up to its normal operating condition. The test was carried out at the selected frequency points obtained from the EUT characterization. Maximization of the emissions, was carried out by rotating the EUT, changing the antenna polarization, and adjusting the antenna height in the following manner: <ol style="list-style-type: none"> Vertical or horizontal polarization (whichever gave the higher emission level
-----------	--

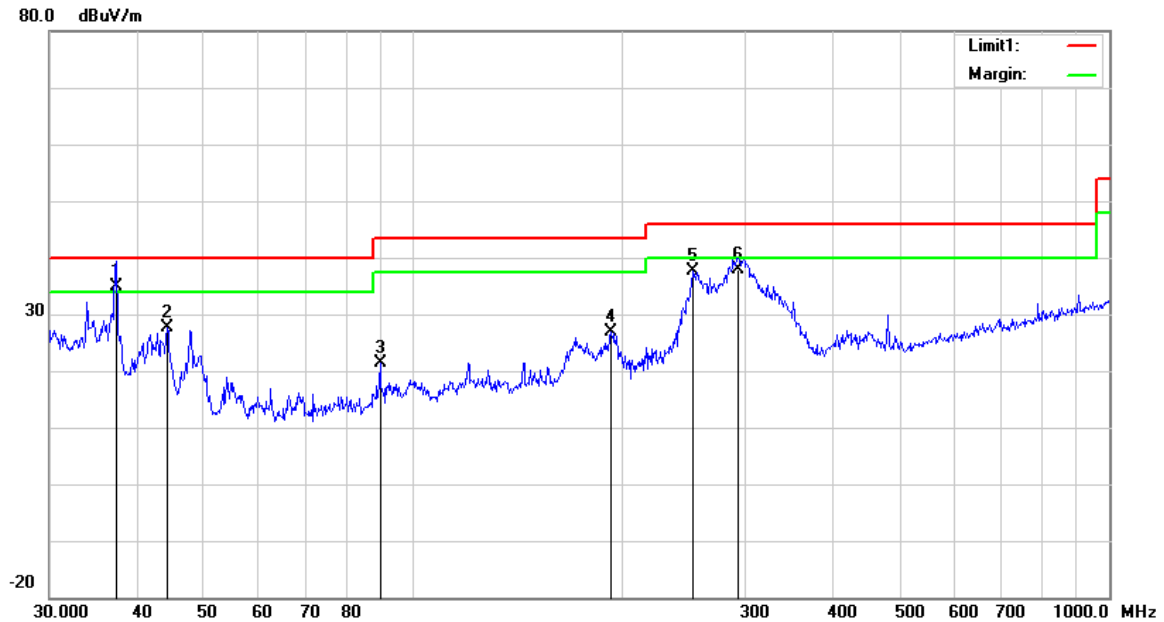
	<p>over a full rotation of the EUT) was chosen.</p> <p>b. The EUT was then rotated to the direction that gave the maximum emission.</p> <p>c. Finally, the antenna height was adjusted to the height that gave the maximum emission.</p> <p>3. The resolution bandwidth and video bandwidth of test receiver/spectrum analyzer is 120 kHz for Quasi Peak detection at frequency below 1GHz.</p> <p>4. The resolution bandwidth of test receiver/spectrum analyzer is 1MHz and video bandwidth is 3MHz with Peak detection for Peak measurement at frequency above 1GHz.</p> <p>The resolution bandwidth of test receiver/spectrum analyzer is 1MHz and the video bandwidth with Peak detection for Average Measurement as below at frequency above 1GHz.</p> <p>■ 1 kHz (Duty cycle < 98%) □ 10 Hz (Duty cycle > 98%)</p> <p>5. Steps 2 and 3 were repeated for the next frequency point, until all selected frequency points were measured.</p>
Remark	
Result	<input checked="" type="checkbox"/> Pass <input type="checkbox"/> Fail

Test Data ☒ Yes ☐ N/A

Test Plot ☒ Yes (See below) ☐ N/A

Test Mode : Operating Mode

Below 1GHz

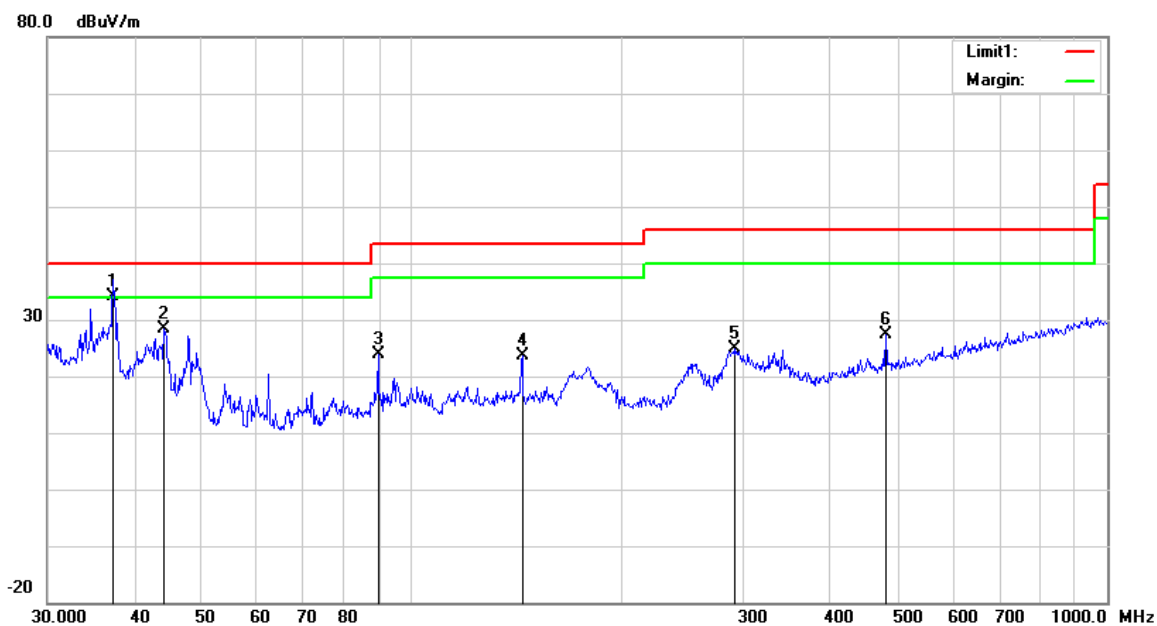


Test Data

Horizontal Polarity Plot @3m

No.	P/L	Frequency	Reading	Detector	Ant_F	PA_G	Cab_L	Result	Limit	Margin	Height	Degree
		(MHz)	(dBuV/m)		(dB/m)	(dB)	(dB)	(dBuV/m)	(dBuV/m)	(dB)	(cm)	(°)
1	H	37.4165	40.50	QP	15.79	22.26	0.77	34.80	40.00	-5.20	100	154
2	H	44.2752	37.98	peak	11.08	22.29	0.76	27.53	40.00	-12.47	200	298
3	H	89.5900	34.75	peak	7.98	22.32	0.96	21.37	43.50	-22.13	100	293
4	H	192.4186	36.04	peak	11.68	22.33	1.54	26.93	43.50	-16.57	100	1
5	H	252.0627	46.83	peak	11.49	22.29	1.70	37.73	46.00	-8.27	100	235
6	H	293.0842	45.11	QP	13.30	22.29	1.78	37.90	46.00	-8.10	100	105

Below 1GHz



Test Data

Vertical Polarity Plot @3m

No.	P/L	Frequency	Reading	Detector	Ant_F	PA_G	Cab_L	Result	Limit	Margin	Height	Degree
		(MHz)	(dBuV/m)		(dB/m)	(dB)	(dB)	(dBuV/m)	(dBuV/m)	(dB)	(cm)	(°)
1	V	37.2855	39.81	QP	15.88	22.26	0.77	34.20	40.00	-5.80	100	158
2	V	44.1202	38.81	peak	11.18	22.29	0.76	28.46	40.00	-11.54	100	162
3	V	89.5900	37.32	peak	7.98	22.32	0.96	23.94	43.50	-19.56	100	287
4	V	144.3348	32.11	peak	12.60	22.38	1.30	23.63	43.50	-19.87	100	284
5	V	292.0583	32.21	peak	13.25	22.29	1.78	24.95	46.00	-21.05	100	348
6	V	480.5276	29.49	peak	17.31	21.85	2.31	27.26	46.00	-18.74	100	324

Above 1GHz

Frequency (MHz)	Read_level (dBμV/m)	Azimuth	Height (cm)	Polarity (H/V)	Level (dBμV/m)	Factors (dB)	Limit (dBμV/m)	Margin (dB)	Detector (PK/AV)
1123.65	68.73	72	100	V	48.67	-20.06	74	-25.33	PK
1547.28	74.67	148	100	V	56.45	-18.22	74	-17.55	PK
2122.95	72.52	211	100	V	57.88	-14.64	74	-16.12	PK
1207.39	69.72	196	200	H	50.03	-19.69	74	-23.97	PK
1673.42	75.31	134	100	H	57.96	-17.35	74	-16.04	PK
1989.41	70.14	65	100	H	55.15	-14.99	74	-18.85	PK

Note1: The highest frequency of the EUT is 2480 MHz, so the testing has been conformed to $5 \times 2480 \text{ MHz} = 12,400 \text{ MHz}$.

Note2: The frequency that above 3GHz is mainly from the environment noise.

Note3: The AV measurement performed, more than 20dB below limit so AV test data was not presented.

Annex A. TEST INSTRUMENT

Instrument	Model	Serial #	Cal Date	Cal Due	In use
AC Line Conducted Emissions					
EMI test receiver	ESCS30	8471241027	09/16/2016	09/15/2017	<input checked="" type="checkbox"/>
Line Impedance Stabilization Network	LI-125A	191106	09/24/2016	09/23/2017	<input checked="" type="checkbox"/>
Line Impedance Stabilization Network	LI-125A	191107	09/24/2016	09/23/2017	<input checked="" type="checkbox"/>
LISN	ISN T800	34373	09/24/2016	09/23/2017	<input checked="" type="checkbox"/>
Transient Limiter	LIT-153	531118	08/31/2016	08/30/2017	<input checked="" type="checkbox"/>
Radiated Emissions					
EMI test receiver	ESL6	100262	09/16/2016	09/15/2017	<input checked="" type="checkbox"/>
OPT 010 AMPLIFIER (0.1-1300MHz)	8447E	2727A02430	08/31/2016	08/30/2017	<input checked="" type="checkbox"/>
Microwave Preamplifier (1 ~ 26.5GHz)	8449B	3008A02402	03/23/2017	03/22/2018	<input checked="" type="checkbox"/>
Bilog Antenna (30MHz~6GHz)	JB6	A110712	09/20/2016	09/19/2017	<input checked="" type="checkbox"/>
Double Ridge Horn Antenna	AH-118	71259	09/23/2016	09/22/2017	<input checked="" type="checkbox"/>

Annex B. EUT And Test Setup Photographs

Annex B.i. Photograph: EUT External Photo

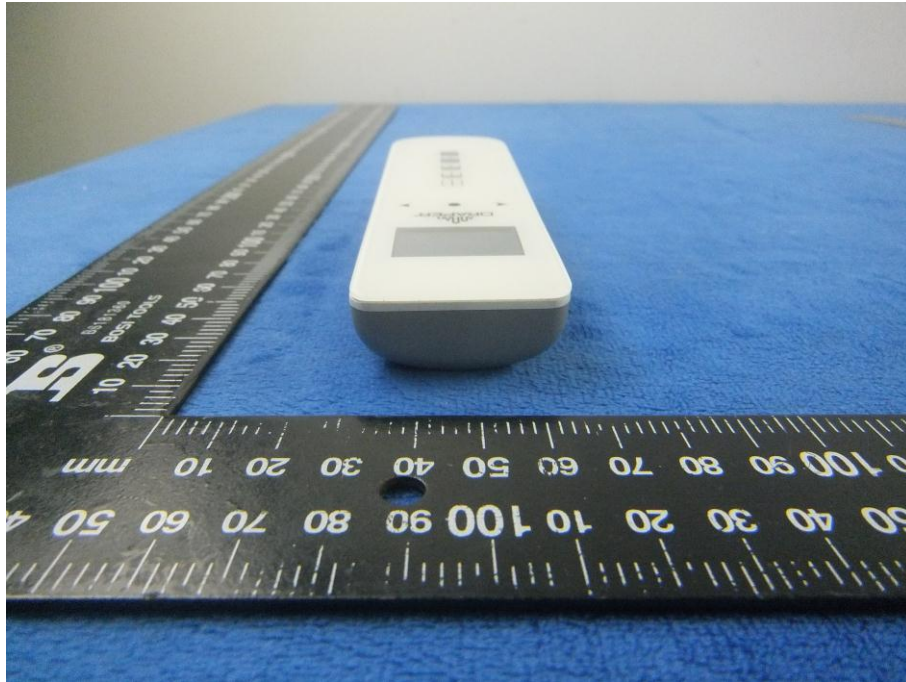
EUT - Front View



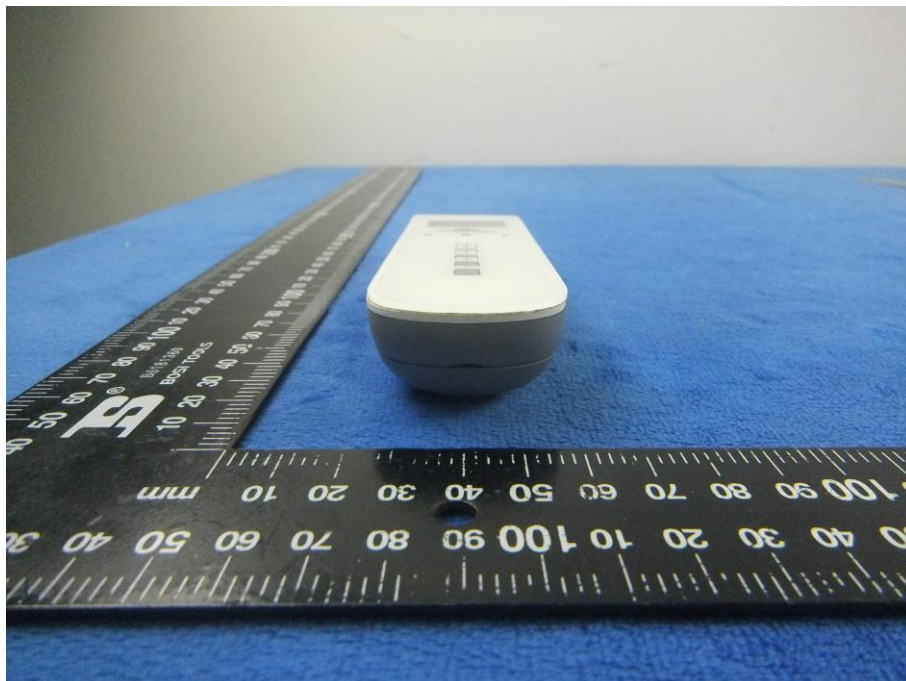
EUT - Rear View



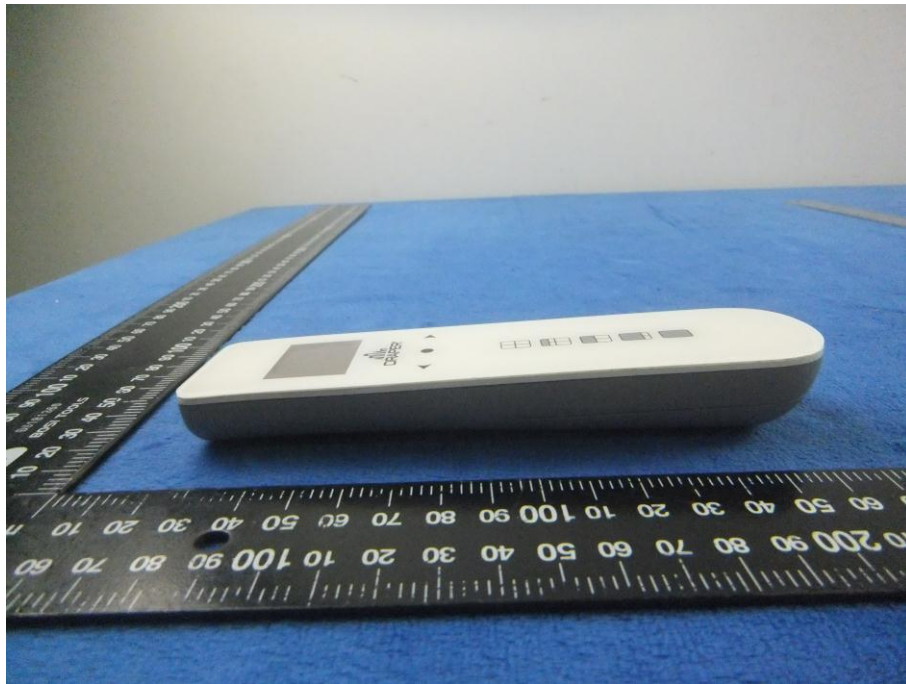
EUT - Top View



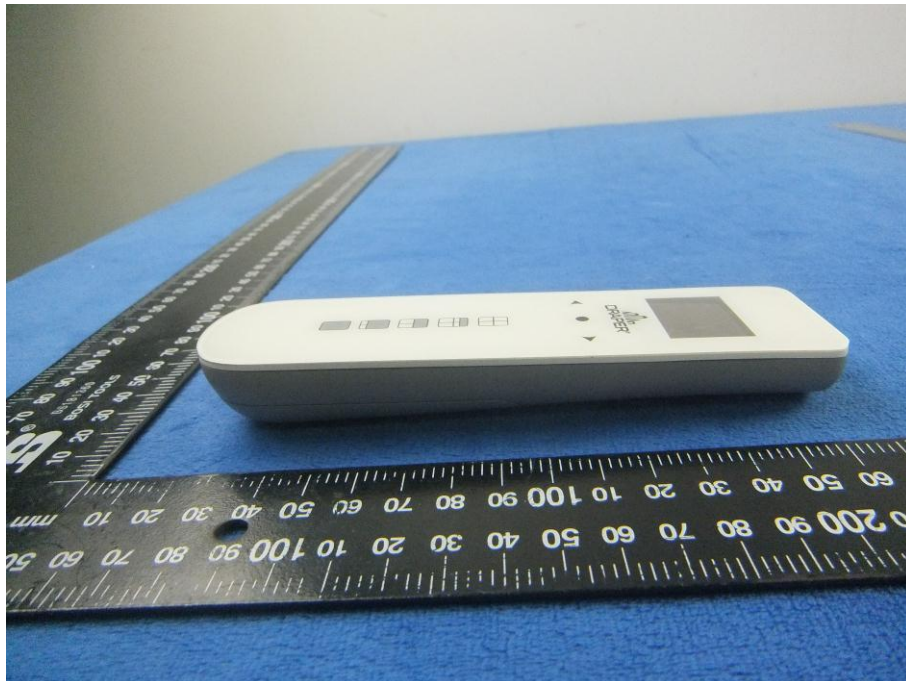
EUT - Bottom View



EUT - Left View



EUT - Right View



Annex B.ii. Photograph: EUT Internal Photo

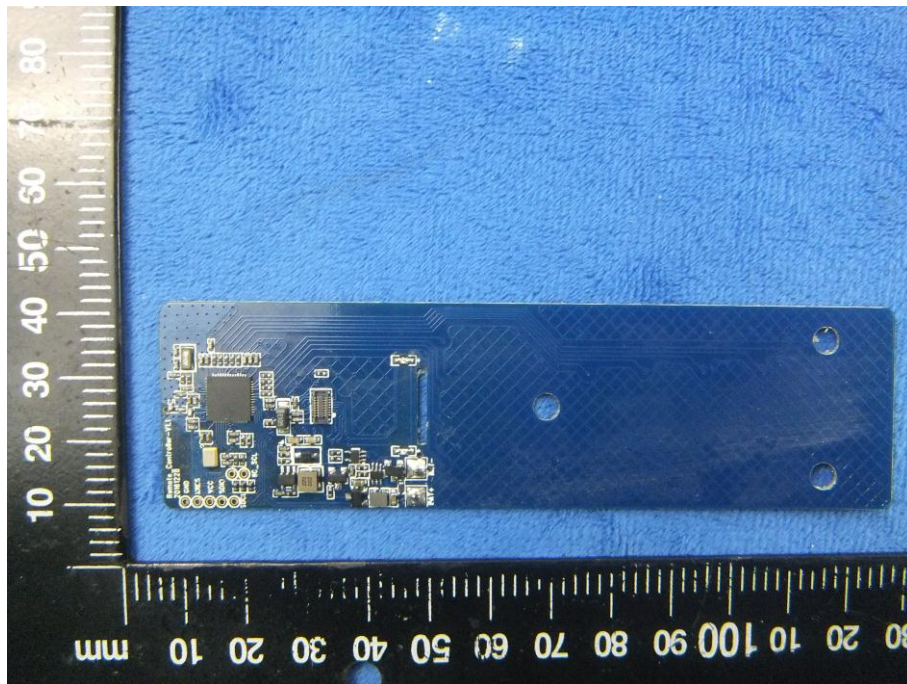
Cover Off - Top View 1



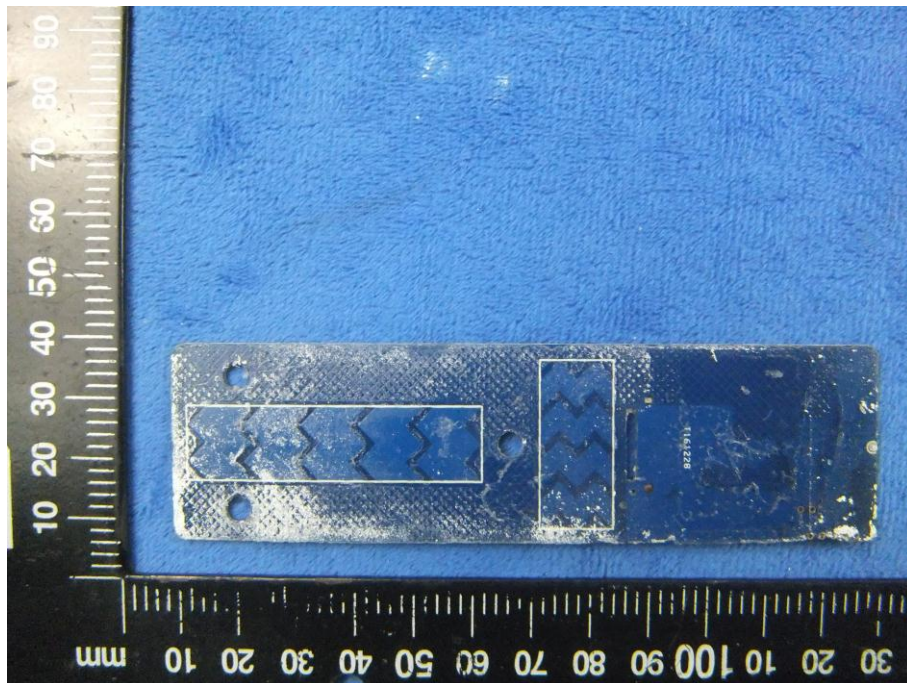
Cover Off - Top View 2



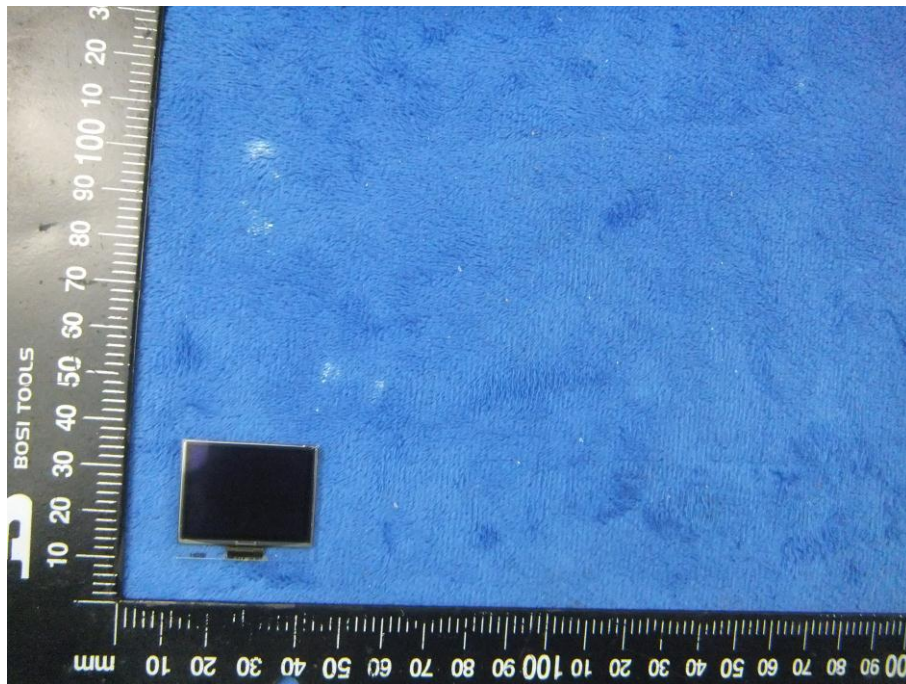
Mainboard – Front View



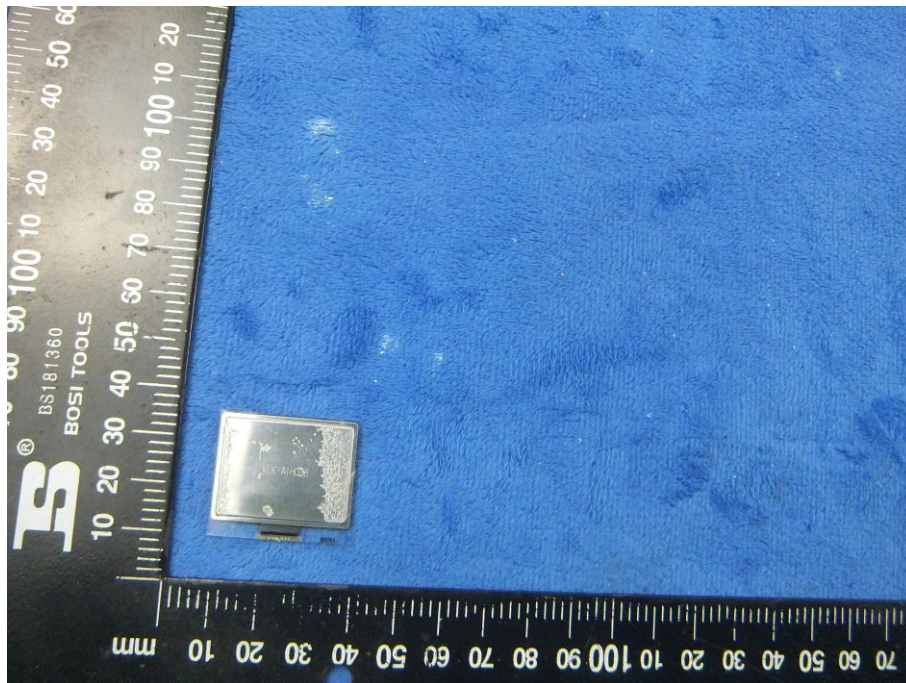
Mainboard - Rear View



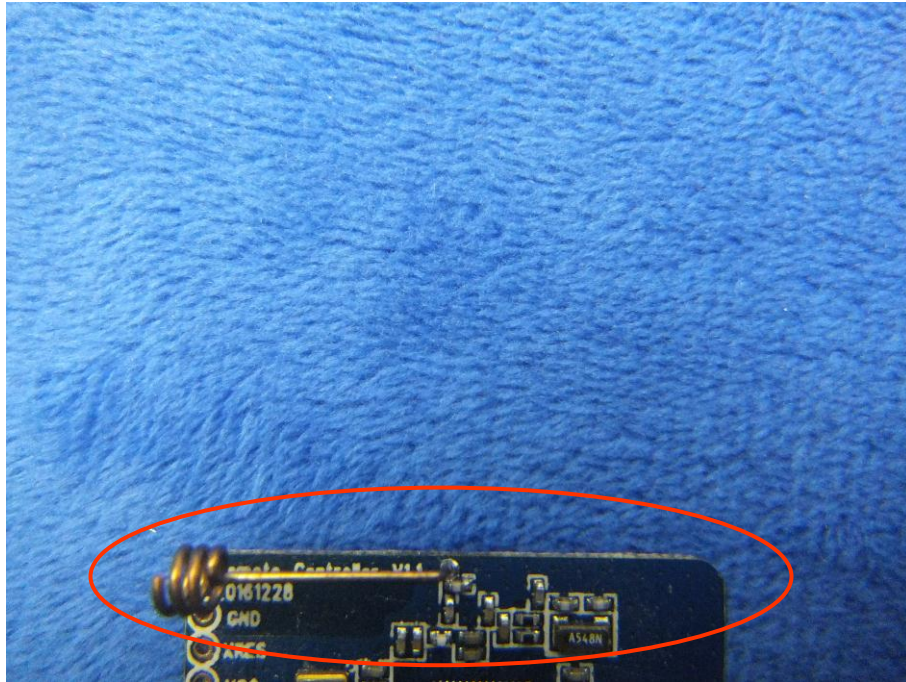
LCD – Front View



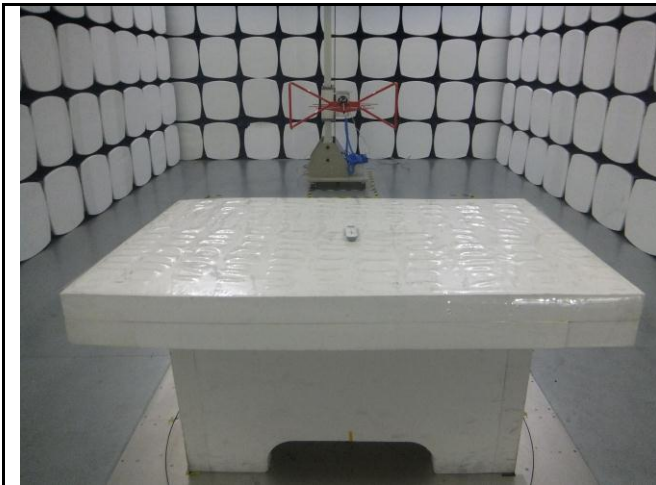
LCD – Rear View



BLE - Antenna View



Annex B.iii. Photograph: Test Setup Photo



Radiated Emissions Test Setup Below 1GHz

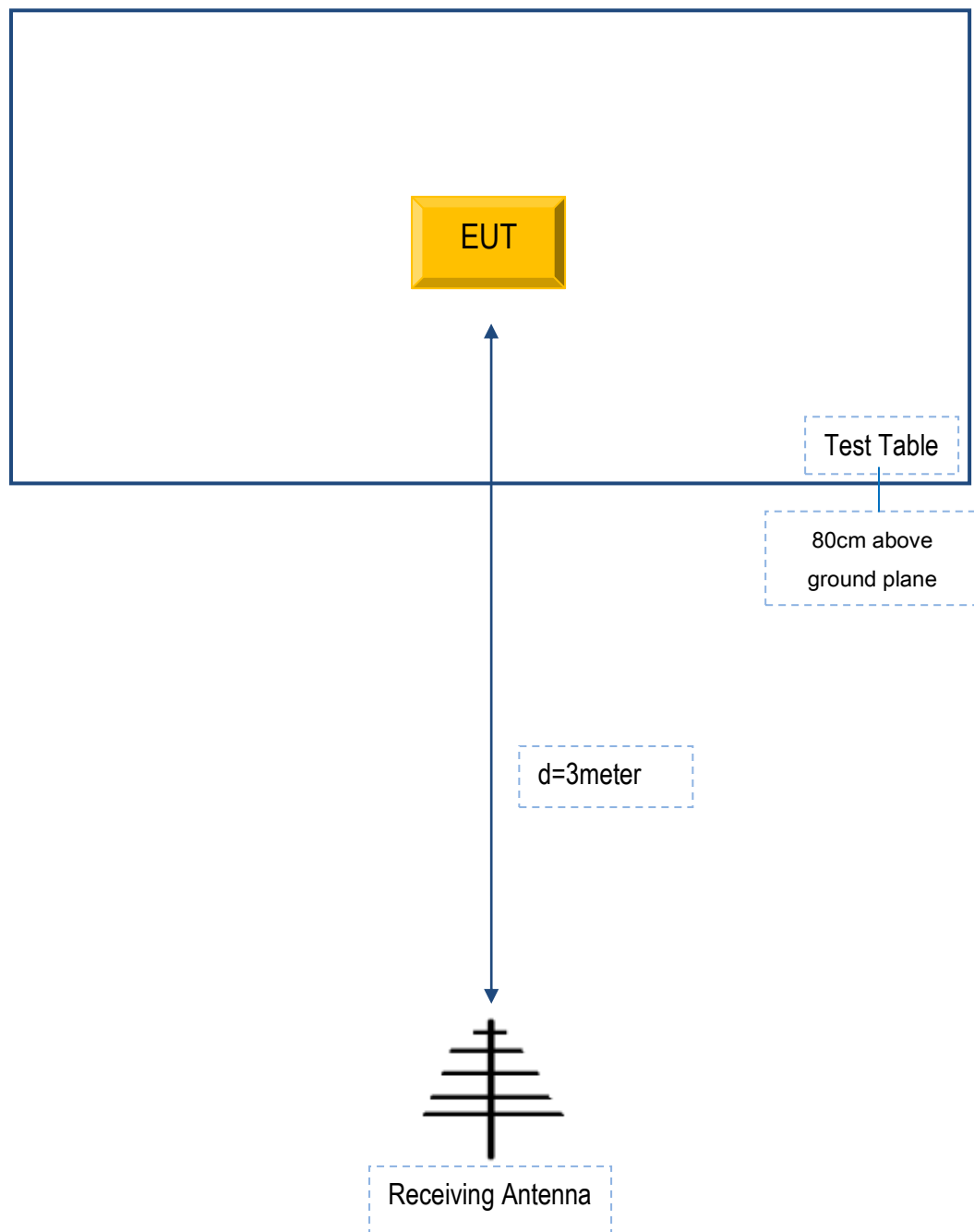


Radiated Emissions Test Setup Above 1GHz

Annex C. TEST SETUP AND SUPPORTING EQUIPMENT

Annex C.ii. TEST SET UP BLOCK

Block Configuration Diagram for Radiated Emissions



Annex C. ii. SUPPORTING EQUIPMENT DESCRIPTION

The following is a description of supporting equipment and details of cables used with the EUT.

Supporting Equipment:

Manufacturer	Equipment Description	Model	Serial No
N/A	N/A	N/A	N/A

Supporting Cable:

Cable type	Shield Type	Ferrite Core	Length	Serial No
N/A	N/A	N/A	N/A	N/A

Annex D. User Manual / Block Diagram / Schematics / Partlist

Please see the attachment

Annex E. DECLARATION OF SIMILARITY

N/A