



# BT Test Report

**Application Purpose** : Original grant  
**Applicant Name:** : RED Luxury  
**FCC ID** : 2ALWM- EK-H  
**Equipment Type** : Smart Bracelet  
**Model Name** : EK-H  
**Report Number** : FCC17040246A  
**Standard(S)** : FCC Part 15 Subpart C  
**Date Of Receipt** : April 11, 2017  
**Date Of Issue** : May 11, 2017

**Test By** : 

(Daisy Qin)

**Reviewed By** : 

(Sol Qin)

**Authorized by** : 

(Michal Ling)

**Prepared by** :

**QTC Certification & Testing Co., Ltd.**

2nd Floor,B1 Buiding,Fengyeyuan Industrial Plant,,Liuxian  
2st.Road,Xin'an Street,Bao'an District,,Shenzhen,  
518000China. **Registration Number: 588523**

REPORT REVISE RECORD				
Report Version	Revise Time	Issued Date	Valid Version	Notes
V1.0	/	April 11, 2017	Valid	Original Report
V1.1	/	May 11, 2017	Valid	Original Report

<b>1. GENERAL INFORMATION.....</b>	<b>5</b>
<b>GENERAL DESCRIPTION OF EUT .....</b>	<b>5</b>
2.1 MEASUREMENT UNCERTAINTY	7
2.2 DESCRIPTION OF TEST MODES	8
1.1.	8
2.3 TABLE OF PARAMETERS OF TEXT SOFTWARE SETTING	9
1.2.	9
2.4 CONFIGURATION OF SYSTEM UNDER TEST	9
2.5 DESCRIPTION OF SUPPORT UNITS (CONDUCTED MODE)	10
<b>3. SUMMARY OF TEST RESULTS .....</b>	<b>11</b>
<b>4. MEASUREMENT INSTRUMENTS .....</b>	<b>12</b>
STANDARD APPLICABLE	13
ANTENNA CONNECTOR CONSTRUCTION	13
<b>§15.207 - CONDUCTED EMISSIONS .....</b>	<b>14</b>
APPLICABLE STANDARD	14
TEST PROCEDURE	14
TEST CONDITIONS	14
PLOT(S) OF TEST DATA	14
<b>§15.209, §15.205, §15.247(D) - SPURIOUS EMISSIONS .....</b>	<b>17</b>
TEST EQUIPMENT	17
TEST PROCEDURE	17
ENVIRONMENTAL CONDITIONS	17
RADIATED EMISSION LIMIT	20
<b>§15.247(A) (2) – 6DB BANDWIDTH TESTING.....</b>	<b>26</b>
TEST EQUIPMENT	26
TEST PROCEDURE	26
ENVIRONMENTAL CONDITIONS	26
APPLICABLE STANDARD	26
TEST RESULT: PASS.	27
<b>§15.247(B) (3) - MAXIMUM PEAK OUTPUT POWER .....</b>	<b>29</b>
TEST EQUIPMENT	29
TEST PROCEDURE	29
ENVIRONMENTAL CONDITIONS	29
APPLICABLE STANDARD	29

TEST RESULT	30
<b>§15.247(D) – 100 KHZ BANDWIDTH OF FREQUENCY BAND EDGE .....</b>	<b>32</b>
TEST EQUIPMENT	32
TEST PROCEDURE	32
ENVIRONMENTAL CONDITIONS	32
APPLICABLE STANDARD	32
TEST RESULT	32
<b>§15.247(E) -MAXIMUM CONDUCTED POWER SPECTRAL DENSITY .....</b>	<b>37</b>
TEST EQUIPMENT	37
TEST PROCEDURE	37
ENVIRONMENTAL CONDITIONS	37
APPLICABLE STANDARD	37
TEST RESULT	38
<b>PHOTOGRAPHS OF THE TEST CONFIGURATION .....</b>	<b>40</b>
<b>PHOTOGRAPHS OF EUT .....</b>	<b>42</b>

# 1. GENERAL INFORMATION

## GENERAL DESCRIPTION OF EUT

Test Model	EK-H
Applicant	RED Luxury
Address	28 rue Bergère 75009, Paris
Manufacturer	SHENZHEN TECNO TECHNOLOGY CO.,LTD.
Address	1-4th Floor,3rd Building,Pacific Industrial Park,No.2088,Shenyan Road,Yantian District,Shenzhen,Guangdong,China
Equipment Type	Smart Bracelet
Brand Name	ECLOCK
Hardware version:	156
Software version:	W507C_V1.0
Extreme Temp. Tolerance	-10℃ to 65℃
Adapter Information:	N/A
Operating Frequency	2402-2480MHz
Channels	40
Channel Spacing	2MHz
Modulation Type	GFSK
Version	4.0
Antenna Type:	Integral Antenna
Antenna gain:	-2dBi
Data of receipt	March 08,2017
Date of test	April 11,2017~May 11,2017
Deviation	None
Condition of Test Sample	Normal

**We hereby certify that:**

All measurement facilities used to collect the measurement data are located at QTC Certification & Testing Co., Ltd.

Registration Number: 588523

The data evaluation, test procedures, and equipment configurations shown in this report were made in accordance with the procedures given in ANSI C 63.10:2013. The sample tested as described in this report is in compliance with the FCC Rules Part15 Subpart C.

ALL the testing were referenced KDB NO. 558074V03R05

The test results of this report relate only to the tested sample identified in this report.

## 2. TEST DESCRIPTION

### 2.1 MEASUREMENT UNCERTAINTY

The reported uncertainty of measurement  $y \pm U$ , where expanded uncertainty  $U$  is based on a standard uncertainty multiplied by a coverage factor of  $k=2$ , providing a level of confidence of approximately **95 %** °.

No.	Item	Uncertainty
1	Conducted Emission Test	$\pm 3.2\text{dB}$
2	RF power, conducted	$\pm 0.16\text{dB}$
3	Spurious emissions, conducted	$\pm 0.21\text{dB}$
4	All emissions, radiated(<1G)	$\pm 4.7\text{dB}$
5	All emissions, radiated(>1G)	$\pm 4.7\text{dB}$
6	Temperature	$\pm 0.5^{\circ}\text{C}$
7	Humidity	$\pm 2\%$

## 2.2 DESCRIPTION OF TEST MODES

To investigate the maximum EMI emission characteristics generated from EUT, the test system was pre-scanning tested based on the consideration of following EUT operation mode or test configuration mode which possibly have effect on EMI emission level. Each of these EUT operation mode(s) or test configuration mode(s) mentioned above was evaluated respectively.

Pretest Mode	Description
Mode 1	CH00
Mode 2	CH20
Mode 3	CH39
Mode 4	Normal

For Conducted Emission	
Final Test Mode	Description
Mode 4	Normal

For Radiated Emission	
Final Test Mode	Description
Mode 1	CH00
Mode 2	CH20
Mode 3	CH39

Note:

- (1) The measurements are performed at the highest, middle, lowest available channels.**
- (2) Record the worst case of each test item in this report.**

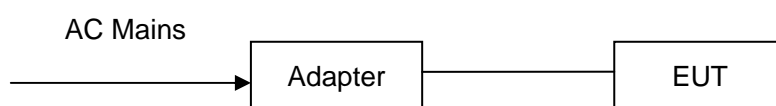


## 2.3 Table of Parameters of Text Software Setting

During testing channel & power controlling software provided by the customer was used to control the operating channel as well as the output power level. The RF output power selection is for the setting of RF output power expected by the customer and is going to be fixed on the firmware of the final end product power parameters.

Test software Version	N/A		
Frequency	2402 MHz	2440 MHz	2480 MHz
Parameters(1Mbps)	DEF	DEF	DEF

## 2.4 CONFIGURATION OF SYSTEM UNDER TEST



(EUT: Smart Bracelet)

## 2.5 DESCRIPTION OF SUPPORT UNITS (CONDUCTED MODE)

The EUT has been tested as an independent unit together with other necessary accessories or support units. The following support units or accessories were used to form a representative test configuration during the tests.

Note:

- (1) The support equipment was authorized by Declaration of Confirmation.
- (2) For detachable type I/O cable should be specified the length in cm in 『Length』 column.
- (3) “YES” is means “shielded” “with core”; “NO” is means “unshielded” “without core”.

### 3. SUMMARY OF TEST RESULTS

Test procedures according to the technical standards:

FCC Part15 (15.247) , Subpart C			
Standard Section	Test Item	Judgment	Remark
15.203	Antenna Requirement	PASS	
15.207	Conducted Emission	PASS	
15.209, 15.205, 15.247(d)	Spurious Emission	PASS	
15.247(a) (2)	6dB Bandwidth Testing	PASS	
15.247(b) (3)	Maximum Peak Output Power	PASS	
15.247(d)	100 KHz Bandwidth of Frequency Band Edge	PASS	
15.247(e)	Maximum Conducted Power Spectral Density	PASS	

**NOTE:**

(1)" N/A" denotes test is not applicable in this test report.

#### 4. MEASUREMENT INSTRUMENTS

NAME OF EQUIPMENT	MANUFACTURER	MODEL	SERIAL NUMBER	Calibration Date	Calibration Due.
EMI Test Receiver	R&S	ESCI	100005	08/19/2016	08/18/2017
LISN	AFJ	LS16	16010222119	08/19/2016	08/18/2017
LISN(EUT)	Mestec	AN3016	04/10040	08/19/2016	08/18/2017
Universal Radio Communication Tester	R&S	CMU 200	1100.0008.02	08/19/2016	08/18/2017
Coaxial cable	Megalon	LMR400	N/A	08/12/2016	08/11/2017
GPIO cable	Megalon	GPIO	N/A	08/12/2016	08/11/2017
Spectrum Analyzer	R&S	FSU	100114	08/19/2016	08/18/2017
Pre Amplifier	H.P.	HP8447E	2945A02715	10/13/2016	10/12/2017
Pre-Amplifier	CDSI	PAP-1G18-38	--	10/13/2016	10/12/2017
Bi-log Antenna	SUNOL Sciences	JB3	A021907	09/13/2016	09/12/2017
9*6*6 Anechoic	--	--	--	08/21/2016	08/20/2017
Horn Antenna	COMPLIANCE ENGINEERING	CE18000	--	09/13/2016	09/12/2017
Horn Antenna	SCHWARZBECK	BBHA9120D	9120D-631	08/23/2016	08/22/2017
Cable	TIME MICROWAVE	LMR-400	N-TYPE04	04/25/2016	04/24/2017
System-Controller	CCS	N/A	N/A	N.C.R	N.C.R
Turn Table	CCS	N/A	N/A	N.C.R	N.C.R
Antenna Tower	CCS	N/A	N/A	N.C.R	N.C.R
RF cable	Murata	MXHQ87WA3000	-	08/21/2016	08/20/2017
Loop Antenna	EMCO	6502	00042960	08/22/2016	08/21/2017
Horn Antenna	SCHWARZBECK	BBHA 9170	1123	08/19/2016	08/18/2017
Power meter	Anritsu	ML2487A	6K00003613	08/23/2016	08/22/2017
Power sensor	Anritsu	MX248XD	--	08/19/2016	08/18/2017

**§15.203 - ANTENNA REQUIREMENT****Standard Applicable**

According to § 15.203, an intentional radiator shall be designed to ensure that no antenna other than that furnished by the responsible party shall be used with the device. The use of a permanently attached antenna or of an antenna that uses a unique coupling to the intentional radiator shall be considered sufficient to comply with the provisions of this section. The manufacturer may design the unit so that a broken antenna can be replaced by the user, but the user of a standard antenna jack or electrical connector is prohibited. The structure and application of the EUT were analyzed to determine compliance with section §15.203 of the rules. §15.203 state that the subject device must meet the following criteria:

- a. Antenna must be permanently attached to the unit.
- b. Antenna must use a unique type of connector to attach to the EUT.

Unit must be professionally installed, and installer shall be responsible for verifying that the correct antenna is employed with the unit.

And according to FCC 47 CFR section 15.247 (b), if the transmitting antennas of directional gain greater than 6dBi are used, the power shall be reduced by the amount in dB that the directional gain of the antenna exceeds 6 dBi.

**Antenna Connector Construction**

The EUT's antenna integrated on PCB, The antenna's gain is -4dBi and meets the requirement.

## §15.207 - CONDUCTED EMISSIONS

### Applicable Standard

The specification used was with the FCC Part 15.207 limits.

### Test Procedure

During the conducted emission test, the EUT was connected to the outlet of the LISN.

Maximizing procedure was performed on the six (6) highest emissions of the EUT.

All data was recorded in the Quasi-peak and average detection mode.

### Test Result

PASS

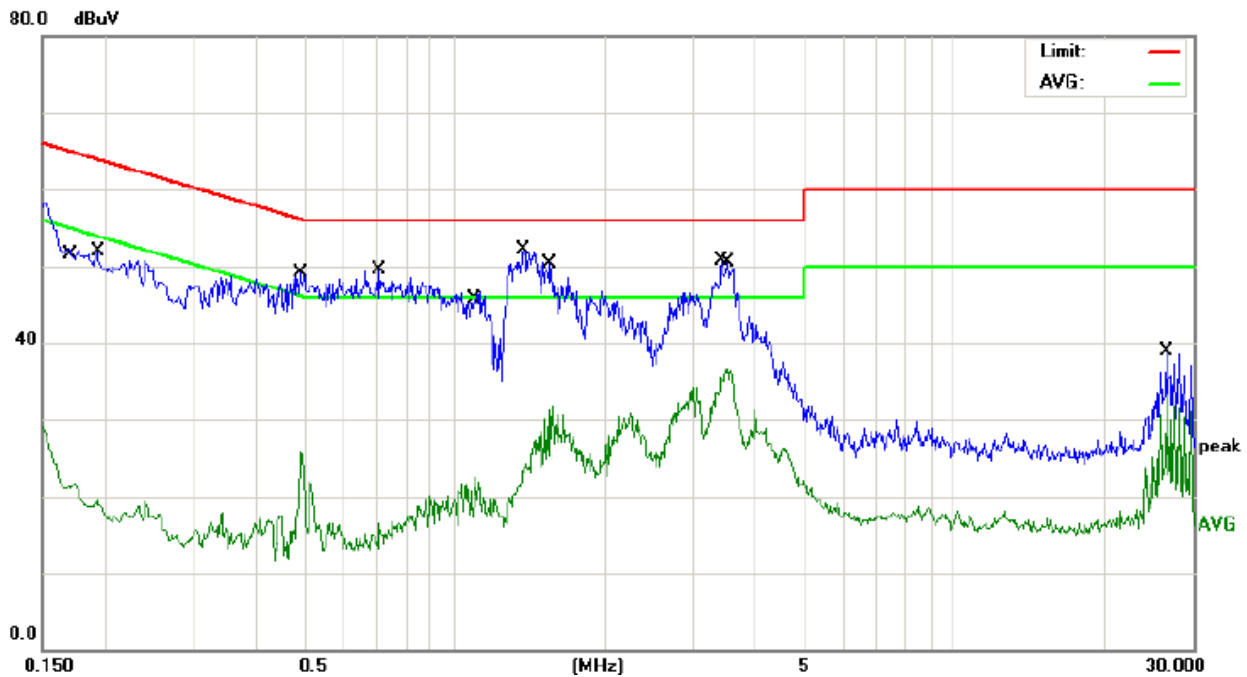
### Test Conditions

Temperature:	26 °C
Relative Humidity:	60%
ATM Pressure:	100.0kPa
Voltage	120V/60Hz

### Plot(s) of Test Data

Plot(s) of Test Data is presented hereinafter as reference.

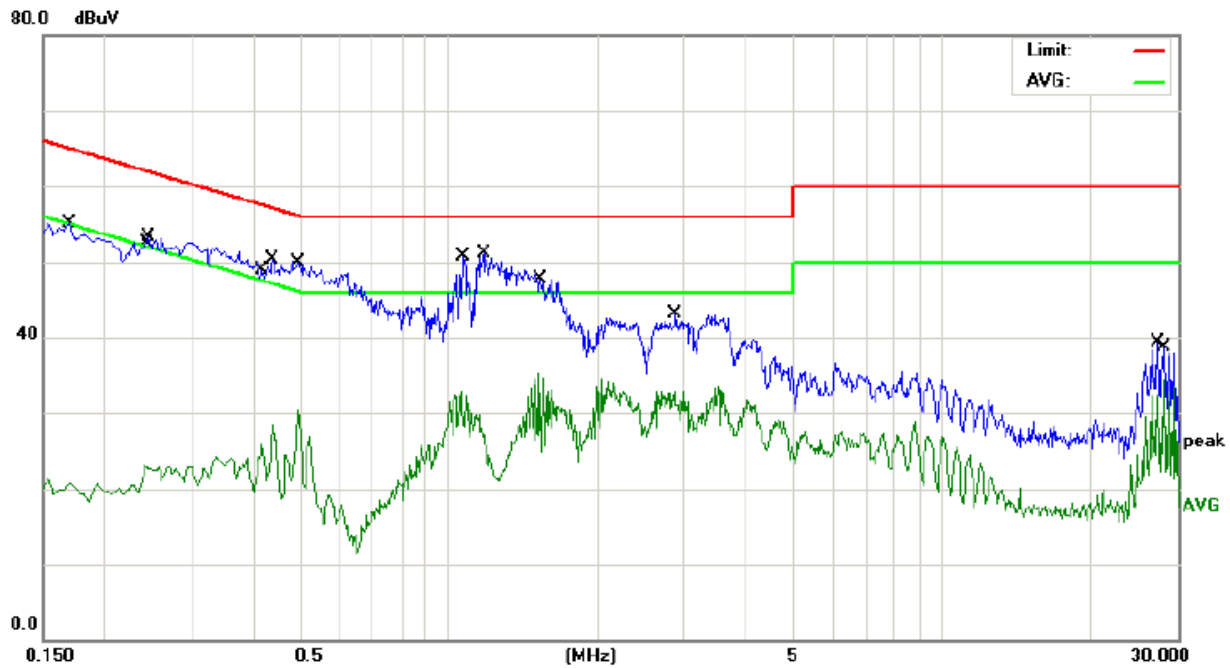
Phase: L



No.	Mk.	Freq.	Reading	Correct	Measure-	Limit	Over	
		MHz	Level	Factor	ment			Detector
			dBuV	dB	dBuV	dBuV	dB	
1		0.1740	0.87	20.88	21.75	54.76	-33.01	AVG
2		0.1940	27.04	20.86	47.90	63.86	-15.96	QP
3		0.4940	24.51	20.80	45.31	56.10	-10.79	QP
4		0.4940	4.83	20.80	25.63	46.10	-20.47	AVG
5		0.7100	24.84	20.74	45.58	56.00	-10.42	QP
6		1.1019	1.88	20.66	22.54	46.00	-23.46	AVG
7	*	1.3779	27.31	20.64	47.95	56.00	-8.05	QP
8		1.5740	11.01	20.62	31.63	46.00	-14.37	AVG
9		3.4180	26.01	20.52	46.53	56.00	-9.47	QP
10		3.5140	16.23	20.52	36.75	46.00	-9.25	AVG
11		26.4740	14.51	20.20	34.71	60.00	-25.29	QP
12		26.4740	12.89	20.20	33.09	50.00	-16.91	AVG

Remark: All of the Tx modes have been investigated, and only worst mode is presented in this report.

Phase: N



No.	Mk.	Freq. MHz	Reading Level dBuV	Correct Factor dB	Measure- ment dBuV	Limit dBuV	Over dB	Detector
1		0.1700	29.27	20.88	50.15	64.96	-14.81	QP
2		0.2404	1.29	20.86	22.15	52.08	-29.93	AVG
3		0.2460	28.48	20.86	49.34	61.89	-12.55	QP
4		0.4180	5.10	20.82	25.92	47.49	-21.57	AVG
5		0.4380	25.56	20.82	46.38	57.10	-10.72	QP
6		0.4940	9.63	20.80	30.43	46.10	-15.67	AVG
7		1.0580	12.26	20.68	32.94	46.00	-13.06	AVG
8		1.1740	16.35	20.66	37.01	56.00	-18.99	QP
9	*	1.5260	14.71	20.62	35.33	46.00	-10.67	AVG
10		2.8740	18.56	20.54	39.10	56.00	-16.90	QP
11		27.4060	15.06	20.20	35.26	60.00	-24.74	QP
12		28.0500	14.01	20.22	34.23	50.00	-15.77	AVG

Remark: All of the Tx modes have been investigated, and only worst mode is presented in this report.



## §15.209, §15.205, §15.247(d) - SPURIOUS EMISSIONS

### Test Equipment

Please refer to section 4 this report.

### Test Procedure

The out of band emission tests were performed in the 3-meter chamber test site, using the setup accordance with the ANSI C63.4-2014. The specification used was the FCC Part Subpart C limits.

- a. The measuring distance of at 3 m shall be used for measurements at frequency up to 1GHz. For frequencies above 1GHz, any suitable measuring distance may be used.
- b. The EUT was placed on the top of a rotating table 0.8 meters above the ground at a 3 meter open area test site. The table was rotated 360 degrees to determine the position of the highest radiation.
- c. The height of the equipment or of the substitution antenna shall be 0.8 m; the height of the test antenna shall vary between 1 m to 4 m. Both horizontal and vertical polarizations of the antenna are set to make the measurement.
- d. The initial step in collecting conducted emission data is a spectrum analyzer peak detector mode pre-scanning the measurement frequency range. Significant peaks are then marked and then Quasi Peak detector mode re-measured.
- e. If the Peak Mode measured value compliance with and lower than Quasi Peak Mode Limit, the EUT shall be deemed to meet QP Limits and then no additional QP Mode measurement performed.
- f. For the actual test configuration, please refer to the related Item –EUT Test Photos.

Note:

***Both horizontal and vertical antenna polarities were tested***

***And performed pretest to three orthogonal axis. The worst case emissions were reported***

### Environmental Conditions

Temperature:	26 °C
Relative Humidity:	55%
ATM Pressure:	100.0kPa

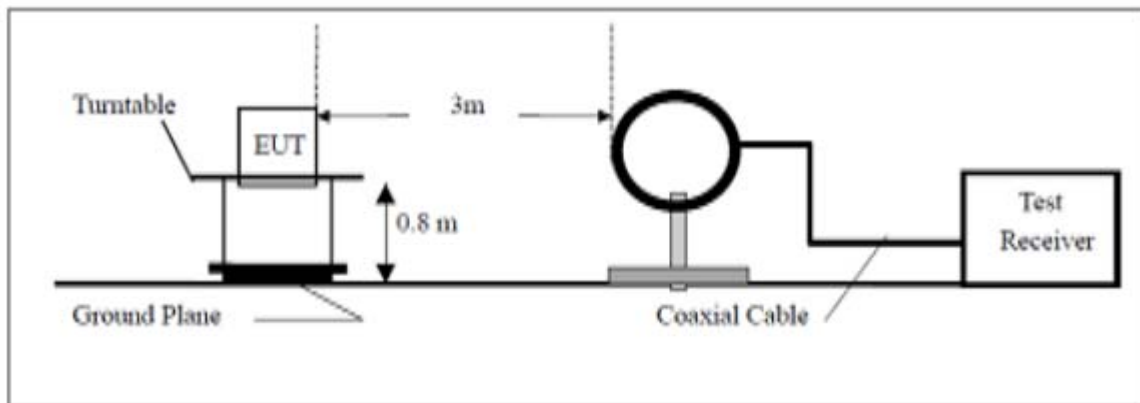
### Radiated Test Setup

The system was investigated from 9 KHz to 25 GHz.

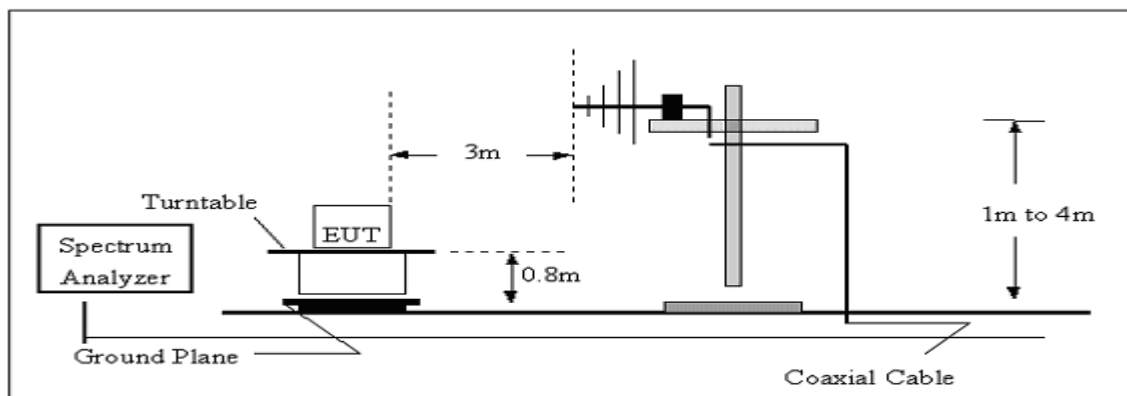
During the radiated emission test, the EMI test receiver & Spectrum Analyzer Setup were set with the following configurations:

Frequency Range	RBW	Video B/W	Detector
9KHz-30MHz	9kHz	30 kHz	QP
30 MHz – 1000 MHz	100 kHz	300 kHz	QP
1000 MHz – 25 GHz	1 MHz	3 MHz	PK
1000 MHz – 25 GHz	1 MHz	10 Hz	Ave

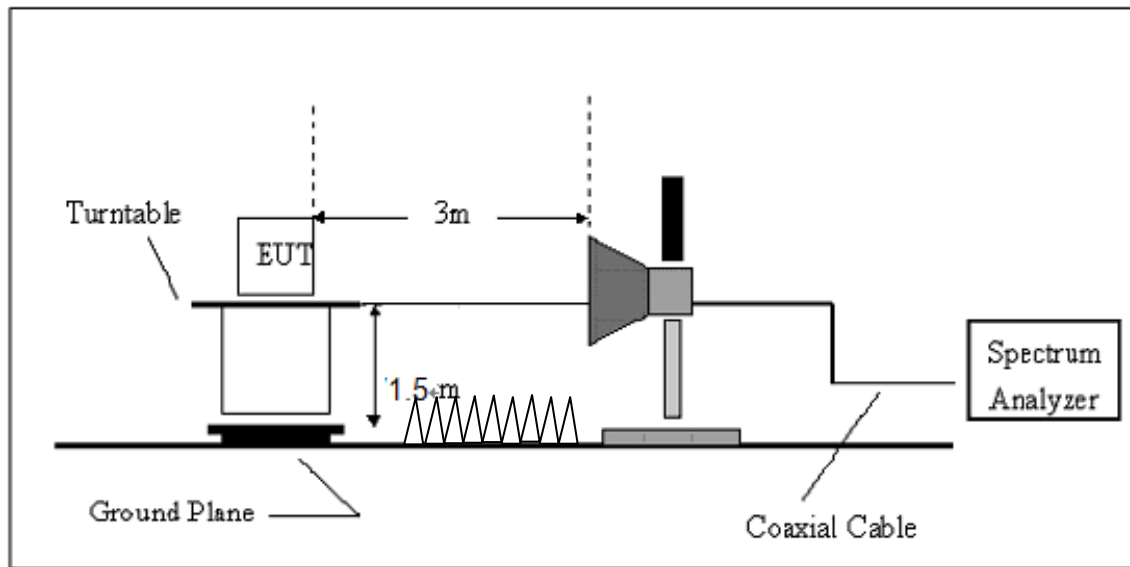
#### (A) Radiated Emission Test-Up Frequency Below 30MHz



#### (B) Radiated Emission Test-Up Frequency 30MHz~1GHz



(C) Radiated Emission Test-Up Frequency Above 1GHz



For the accrual test configuration, please refer to the related items-photos of Testing.

## Radiated Emission Limit

Applicable Standard

FCC §15.247 (d); §15.209; §15.205;

Radiated Emission Test Result

Frequency (MHz)	Field strength (microvolts/meter)	Measurement distance (meters)
0.009–0.490	2400/F(kHz)	300
0.490–1.705	24000/F(kHz)	30
1.705–30.0	30	30
30–88	100**	3
88–216	150**	3
216–960	200**	3
Above 960	500	3

Test Mode: Transmitting

Note:

***Both horizontal and vertical antenna polarities were tested***

***and performed pretest to three orthogonal axis. The worst case emissions were reported***

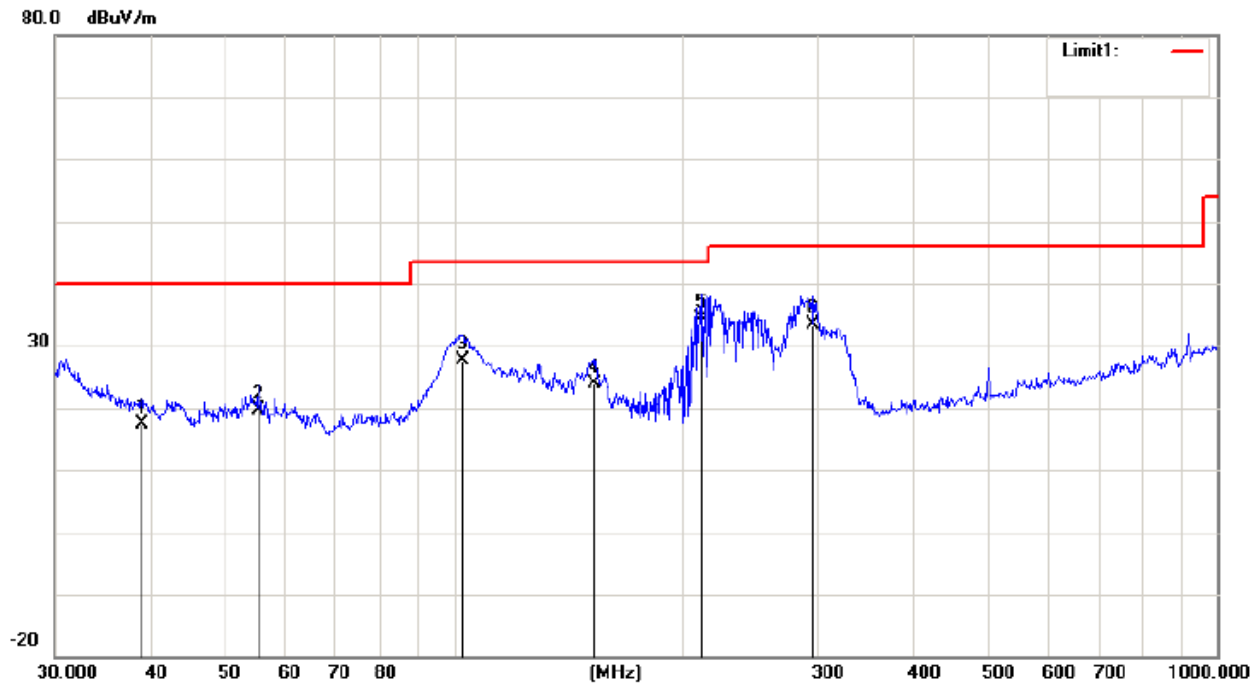
### Test result:

From 9KHz to 30MHz

NOTE: 9KHz-30MHz the measurements were greater than 20dB below the limit.

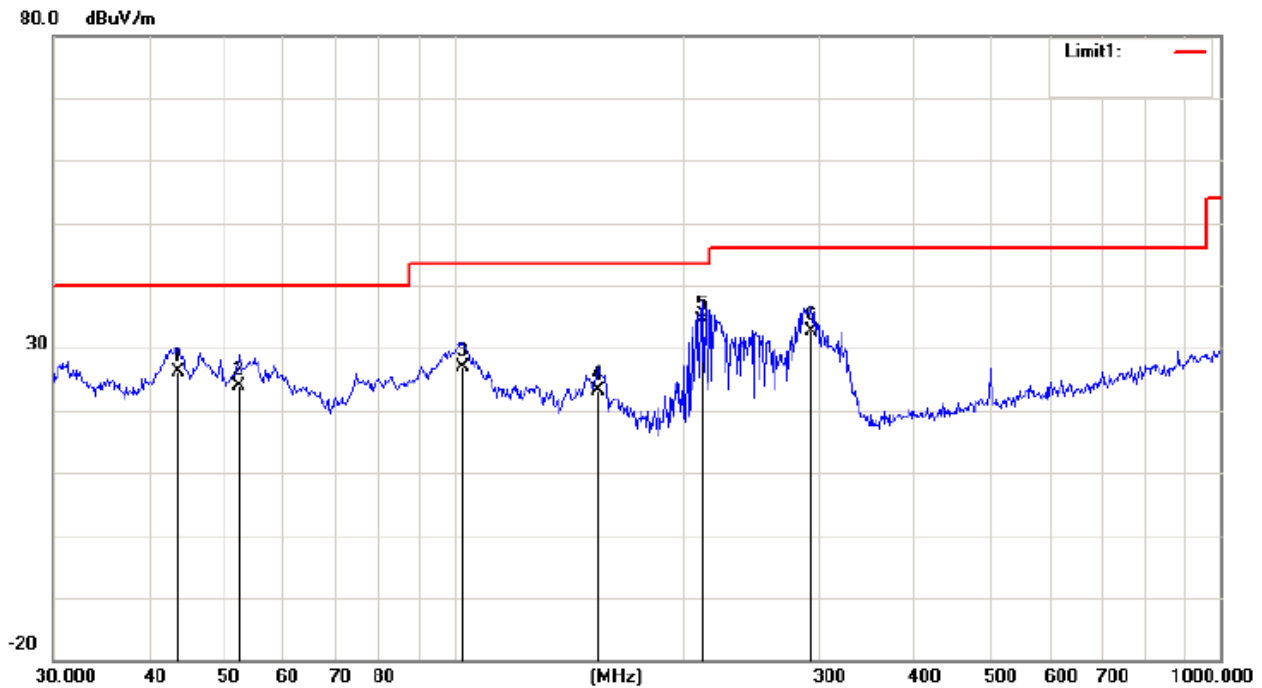
Frequency from 30MHz to 1GHz

**Horizontal:**



No.	Mk.	Freq. MHz	Reading Level dBuV	Correct Factor dB	Measure- ment dBuV/m	Limit dBuV/m	Over dB	Detector
1		39.0245	20.19	-2.79	17.40	40.00	-22.60	QP
2		55.4147	29.07	-9.49	19.58	40.00	-20.42	QP
3		102.7192	33.30	-5.57	27.73	43.50	-15.77	QP
4		153.2004	27.88	-4.08	23.80	43.50	-19.70	QP
5	*	211.5265	39.56	-5.23	34.33	43.50	-9.17	QP
6		295.1469	39.08	-5.80	33.28	46.00	-12.72	QP

Remark: All of the TX modes have been investigated, and only worst mode is presented in this report.

**Vertical:**

No.	Mk.	Freq. MHz	Reading Level dBuV	Correct Factor dB	Measure- ment dBuV/m	Limit dBuV/m	Over dB	Detector
1		43.6584	32.14	-6.01	26.13	40.00	-13.87	QP
2		52.3912	33.20	-9.25	23.95	40.00	-16.05	QP
3		102.7192	32.49	-5.57	26.92	43.50	-16.58	QP
4		154.2786	27.35	-4.16	23.19	43.50	-20.31	QP
5	*	211.5265	39.50	-5.23	34.27	43.50	-9.23	QP
6		293.0842	38.44	-5.83	32.61	46.00	-13.39	QP

Remark: All of the TX modes have been investigated, and only worst mode is presented in this report.

From 1GHz to 25GHz:

Operation Mode:	Channel 0	Test Date :	April 20, 2017
Frequency Range:	Above 1GHz	Temperature :	28°C
Test Result:	PASS	Humidity :	65 %
Measured Distance:	3m	Test By:	

Freq. (MHz)	Ant.Pol.	Emission Level(dBuV)		Limit 3m(dBuV/m)		Over(dB)	
	H/V	PK	AV	PK	AV	PK	AV
4804.68	V	68.39	50.34	74	54	-13.61	-8.66
7206.91	V	65.77	46.30	74	54	-16.23	-14.70
9608.51	V	69.31	44.10	74	54	-11.69	-16.90
4804.68	H	69.47	40.40	74	54	-13.53	-20.60
7206.95	H	62.37	46.23	74	54	-20.63	-11.77

**All emissions not reported were more than 20dB below the specified limit or in the noise floor.**

- Note:** (1) All Readings are Peak Value and AV.  
 (2) Emission Level= Reading Level+ Probe Factor +Cable Loss.  
 (3) Data of measurement within this frequency range shown "--" in the table above means the reading of emissions are attenuated more than 20dB below the permissible limits or the field strength is too small to be measured.

Operation Mode: Channel 20      Test Date : April 20, 2017  
 Frequency Range: Above 1GHz      Temperature : 28°C  
 Test Result: PASS      Humidity : 65 %  
 Measured Distance: 3m      Test By:

Freq. (MHz)	Ant.Pol.	Emission Level(dBuV)		Limit 3m(dBuV/m)		Over(dB)	
	H/V	PK	AV	PK	AV	PK	AV
4884.61	V	67.58	42.25	74	54	-14.42	-16.75
7326.53	V	63.10	48.54	74	54	-18.90	-12.46
4884.87	H	64.00	47.63	74	54	-17.00	-13.37
7326.59	H	68.66	49.19	74	54	-14.34	-11.81
9768.27	H	69.33	50.27	74	54	-13.67	-7.73

**All emissions not reported were more than 20dB below the specified limit or in the noise floor.**

- Note:**
- (1) All Readings are Peak Value and AV.
  - (2) Emission Level= Reading Level+Probe Factor +Cable Loss.
  - (3) Data of measurement within this frequency range shown "--" in the table above means the reading of emissions are attenuated more than 20dB below the permissible limits or the field strength is too small to be measured.



Operation Mode: Channel 39      Test Date : April 20, 2017  
 Frequency Range: Above 1GHz      Temperature : 28°C  
 Test Result: PASS      Humidity : 65 %  
 Measured Distance: 3m      Test By:

Freq. (MHz)	Ant.Pol. H/V	Emission Level(dBuV)		Limit 3m(dBuV/m)		Over(dB)	
		PK	AV	PK	AV	PK	AV
4960.74	V	67.73	47.40	74	54	-14.27	-11.60
7440.96	V	68.71	49.94	74	54	-13.29	-11.06
9920.67	V	71.77	43.01	74	54	-9.23	-17.99
4960.59	H	65.88	48.32	74	54	-17.12	-12.68
7440.63	H	67.75	46.13	74	54	-15.25	-11.87

**All emissions not reported were more than 20dB below the specified limit or in the noise floor.**

- Note:**
- (1) All Readings are Peak Value and AV.
  - (2) Emission Level= Reading Level+Probe Factor +Cable Loss.
  - (3) Data of measurement within this frequency range shown “ -- ” in the table above means the reading of emissions are attenuated more than 20dB below the permissible limits or the field strength is too small to be measured.

## §15.247(a) (2) – 6dB BANDWIDTH TESTING

### Test Equipment

Please refer to Section 4 this report.

### Test Procedure

1. Set EUT in the transmitting mode.
2. Remove the antenna from the EUT and then connect a low loss RF cable from the antenna port to the spectrum analyzer.
3. Set the spectrum analyzer as RBW=100KHz,VBW $\geq$ RBW, Span=3MHz,Sweep=auto.
4. Mark the peak frequency and -6dB(upper and lower)frequency.
5. Repeat until all the rest channels are investigated.

**Note** : The EUT was tested according to KDB 558074 for compliance to FCC 47CFR 15.247 requirements.

### Environmental Conditions

Temperature:	26 °C
Relative Humidity:	55%
ATM Pressure:	100.0kPa

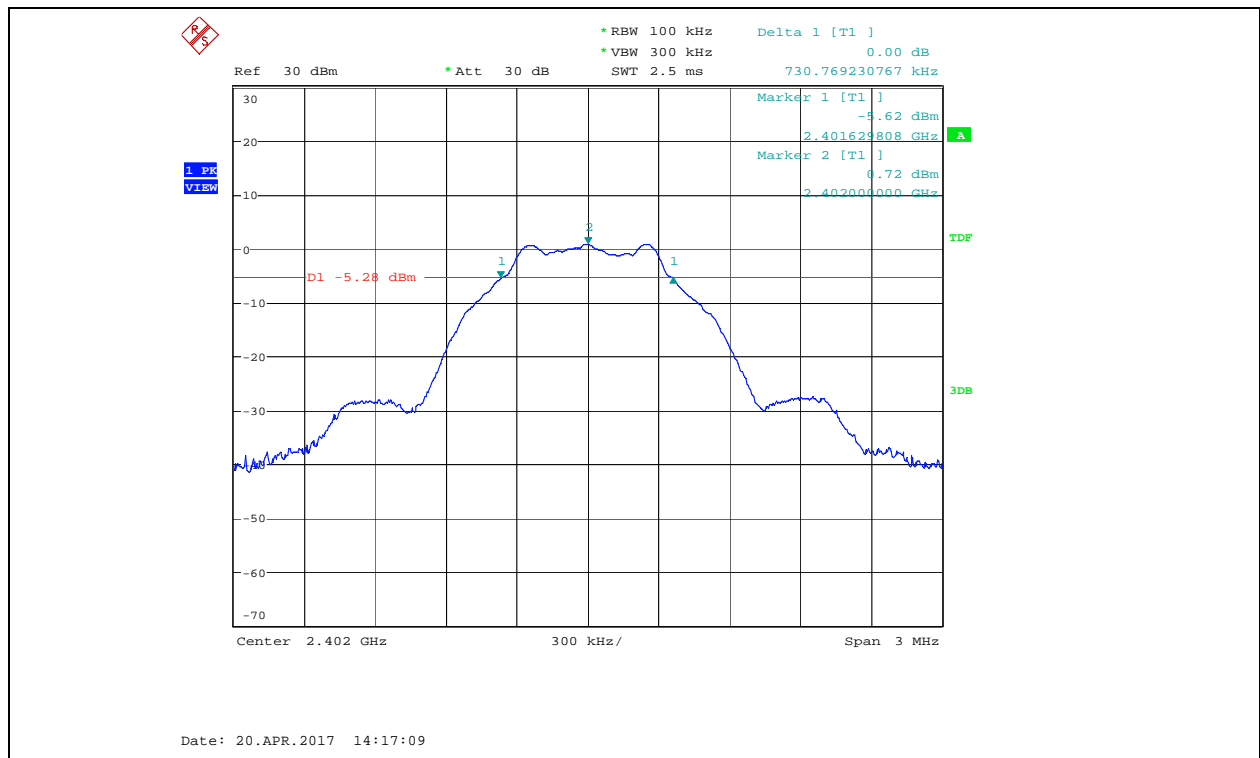
### Applicable Standard

Systems using digital modulation techniques may operate in the 902–928 MHz, 2400–2483.5 MHz, and 5725–5850 MHz bands. The minimum 6 dB bandwidth shall be at least 500 kHz.

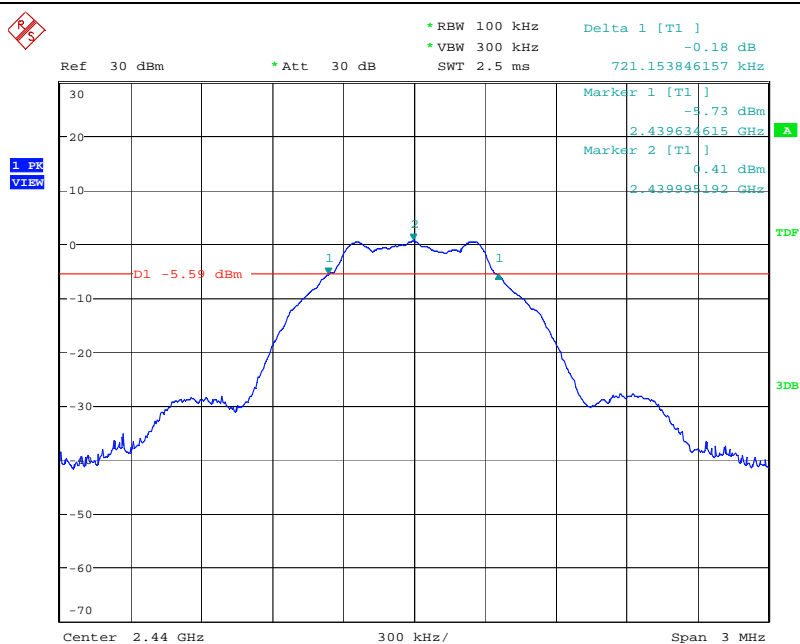
**Test Result: Pass.**

Please refer to the following tables

Channel Frequency (MHz)	Data Rate (Mbps)	6dB Bandwidth (kHz)	Limit (kHz)	Ref. Plot
2402	1	721.15	>500	PLOT 1
2440	1	706.73	>500	PLOT 2
2480	1	687.49	>500	PLOT 3

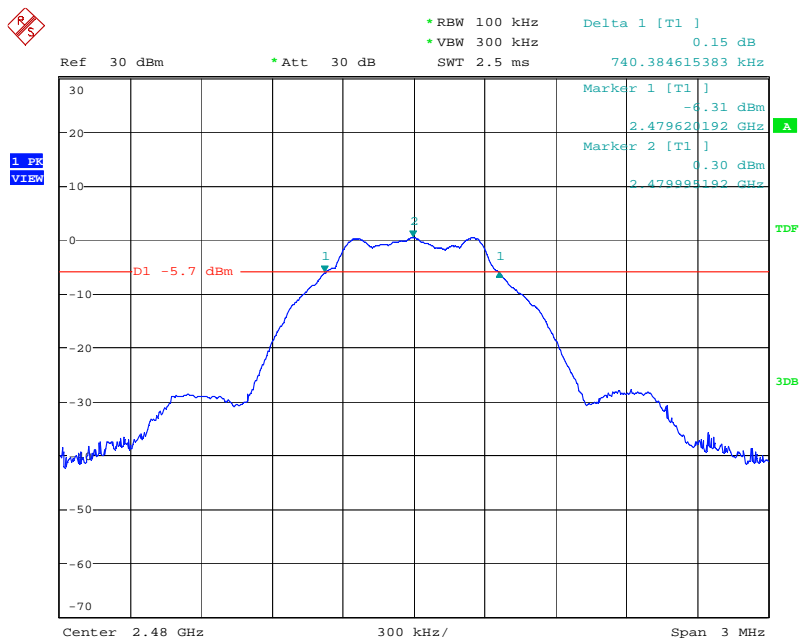
**Low Channel**

## Middle channel



Date: 20.APR.2017 14:19:11

## High Channel



Date: 20.APR.2017 14:21:16

## §15.247(b) (3) - MAXIMUM PEAK OUTPUT POWER

### Test Equipment

Please refer to Section 4 this report.

### Test Procedure

1. The EUT was directly connected to the spectrum analyzer and antenna output port as show in the block diagram below,
2. Set the EUT Work on the top, the middle and the bottom operation frequency individually.
3. Set the RBW =1MHz, VBW  $\geq$  3RBW, span  $\geq$  1.5\*6dbbandwith.  
Sweep time = auto couple, Detector = peak, Trace mode = max hold.
4. Record the maximum power from the spectrum analyzer.
5. The maximum peak power shall be less 1 Watt (30dBm).

**Note :** The EUT was tested according to KDB 558074 for compliance to FCC 47CFR 15.247 requirements.

### Environmental Conditions

Temperature:	26 °C
Relative Humidity:	55%
ATM Pressure:	100.0kPa

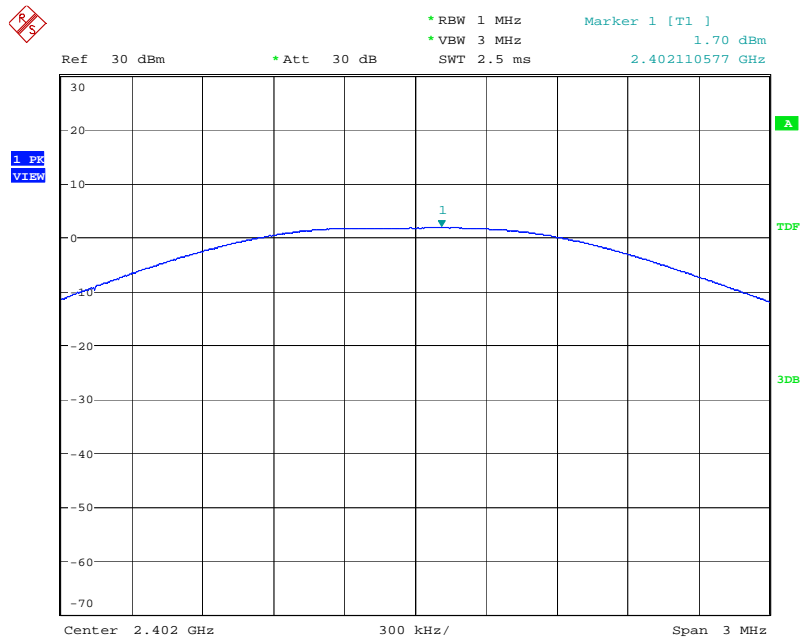
### Applicable Standard

According to §15.247(b) (3), for systems using digital modulation in the 902–928 MHz, 2400–2483.5 MHz, and 5725–5850 MHz bands: 1 Watt. As an alternative to a peak power measurement, compliance with the one Watt limit can be based on a measurement of the maximum conducted output power. Maximum Conducted Output Power is defined as the total transmit power delivered to all antennas and antenna elements averaged across all symbols in the signaling alphabet when the transmitter is operating at its maximum power control level. Power must be summed across all antennas and antenna elements. The average must not include any time intervals during which the transmitter is off or is transmitting at a reduced power level. If multiple modes of operation are possible (e.g., alternative modulation methods), the maximum conducted output power is the highest total transmit power occurring in any mode.

## Test Result

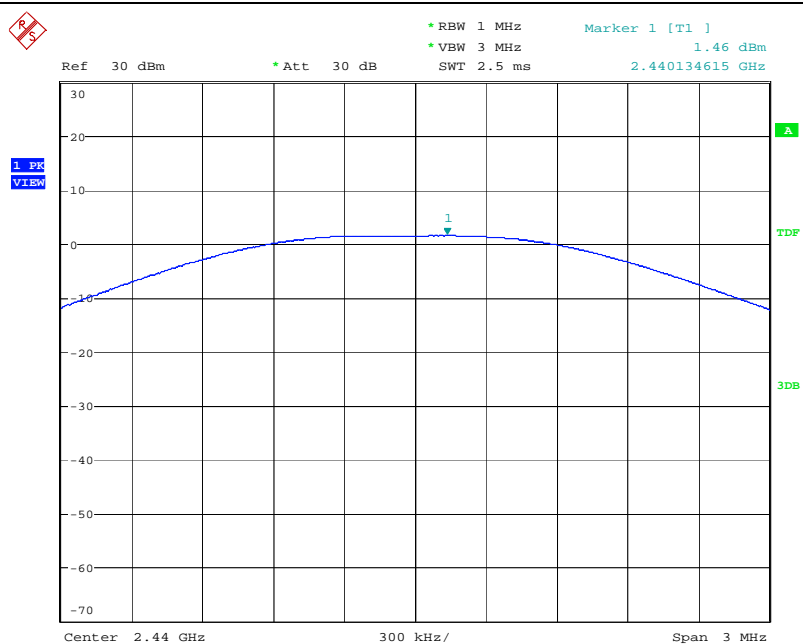
Channel	Frequency (MHz)	Data Rate (Mbps)	Conducted Power (dBm)	Limit (dBm)
Low	2402	1	1.70	30
Middle	2440	1	1.46	30
High	2480	1	1.33	30

### Low channel



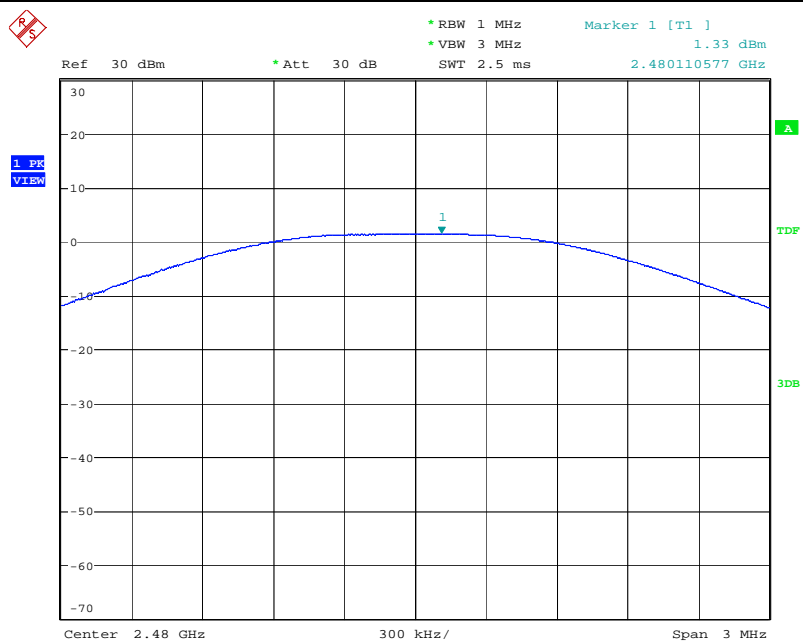
Date: 20.APR.2017 14:22:14

## Middle channel



Date: 20.APR.2017 14:23:00

## High channel



Date: 20.APR.2017 14:23:41

## §15.247(d) – 100 kHz BANDWIDTH OF FREQUENCY BAND EDGE

### Test Equipment

Please refer to Section 4 this report.

### Test Procedure

The out of band emission tests were performed in the 3-meter chamber test site, using the setup accordance with the ANSI C63.4-2014. The specification used was the FCC Part Subpart C limits.

### Environmental Conditions

Temperature:	26 °C
Relative Humidity:	55%
ATM Pressure:	100.0kPa

### Applicable Standard

In any 100 kHz bandwidth outside the frequency band in which the spread spectrum or digitally modulated intentional radiator is operating, the radio frequency power that is produced by the intentional radiator shall be at least 20 dB below that in the 100 kHz bandwidth within the band that contains the highest level of the desired power, based on either an RF conducted or a radiated measurement, provided the transmitter demonstrates compliance with the peak conducted power limits. If the transmitter complies with the conducted power limits based on the use of RMS averaging over a time interval, as permitted under paragraph (b)(3) of this section, the attenuation required under this paragraph shall be 30 dB instead of 20 dB. Attenuation below the general limits specified in §15.209(a) is not required. In addition, radiated emissions which fall in the restricted bands, as defined in §15.205(a), must also comply with the radiated emission limits specified in §15.209(a) (see §15.205(c)).

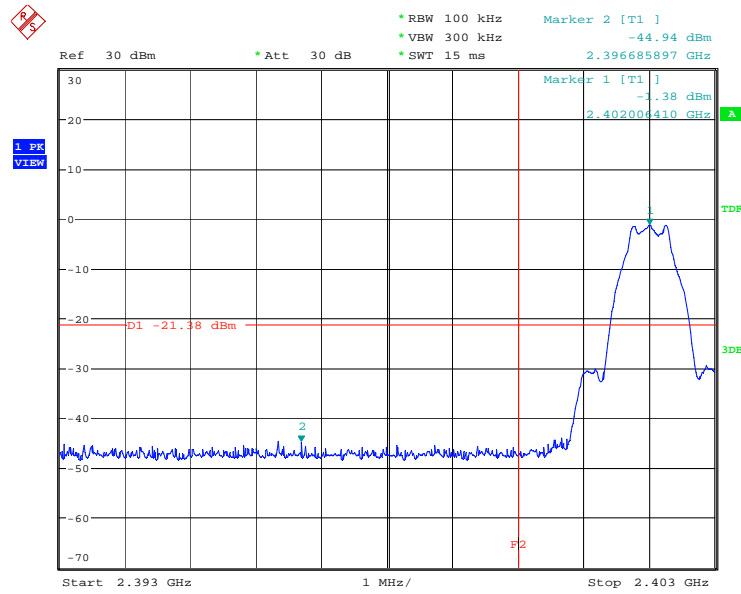
### Test Result

PASS

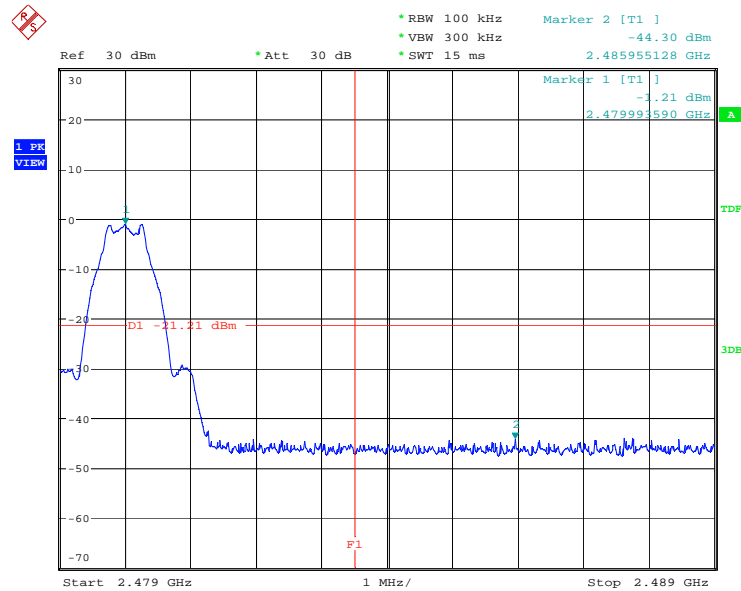


**Radiated measurement:**

Indicated		result (PK/AV)	Table Angle Degree	Antenna		Correction Factor			FCC Part 15.247		
Frequency (MHz)	Receiver Reading (dBμV/m)			Height (m)	Polar (H/V)	Ant. Factor (dB/m)	Cable Loss (dB)	Pre-Amp. Gain (dB)	Cord. Amp. (dBμV/m)	Limit (dBμV/m)	Margin (dB)
Low Channel (2402MHz)											
2390	41.62	AV	225	1.5	V	30.3	4.1	33.1	42.92	54	11.08
2390	41.84	AV	90	2	H	30.3	4.1	33.1	40.54	54	10.86
2390	61.17	PK	180	1.5	V	30.3	4.1	33.1	42.92	74	11.53
2390	61.87	PK	270	2	H	30.3	4.1	33.1	63.17	74	10.83
High Channel (2480MHz)											
2483.5	41.03	AV	360	1	V	31	4.4	32.7	43.73	54	10.27
2483.5	41.23	AV	90	2	H	31	4.4	32.7	43.93	54	10.07
2483.5	60.47	PK	180	1	V	31	4.4	32.7	63.17	74	10.83
2483.5	60.73	PK	225	2	H	31	4.4	32.7	63.43	74	10.57

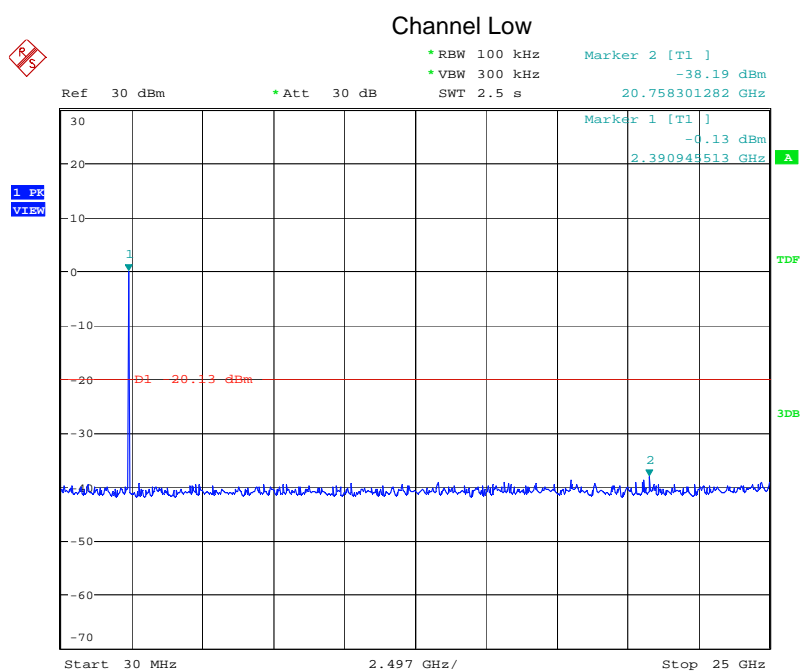
**Conducted Emission Measurement:****Low channel**

Date: 13.JUN.2017 16:59:04

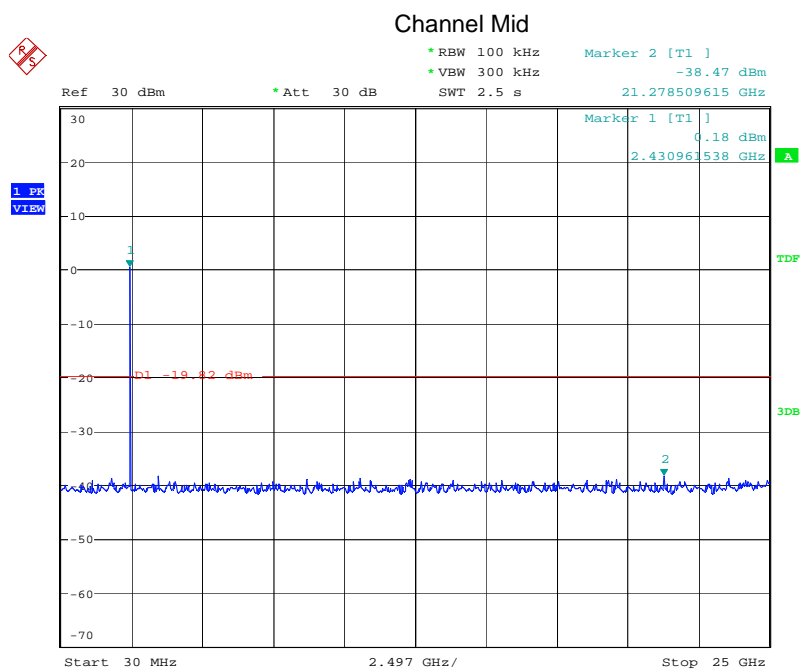
**High channel**

Date: 13.JUN.2017 17:01:52

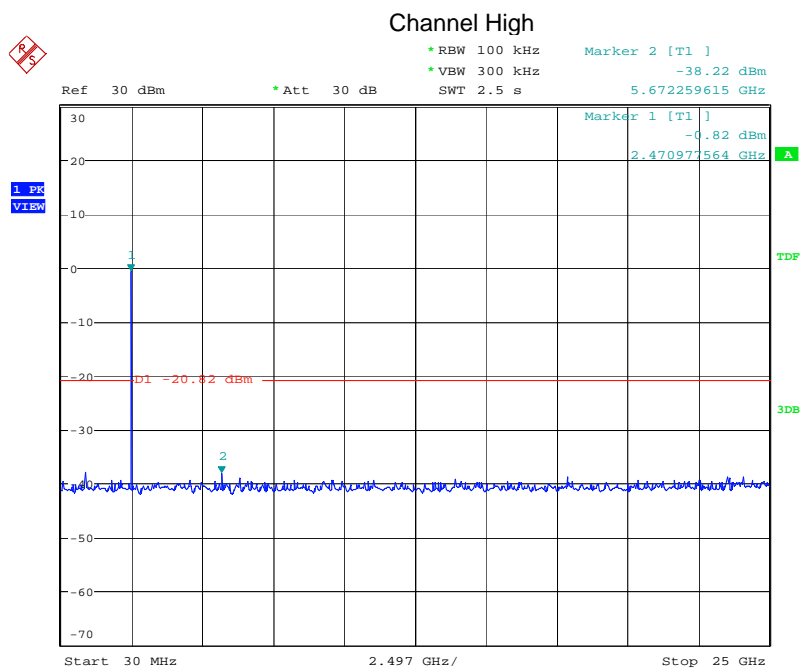
## Conducted spurious emissions



Date: 20.APR.2017 14:31:11



Date: 20.APR.2017 14:32:27



Date: 20.APR.2017 14:33:53

## §15.247(e) -MAXIMUM CONDUCTED POWER SPECTRAL DENSITY

### Test Equipment

Please refer to Section 4 this report.

### Test Procedure

- 1, This procedure shall be used if maximum peak conducted output power was used to demonstrate compliance, and is optional if the maximum conducted (average) output power was used to demonstrate compliance.
- 2, Set analyzer center frequency to DTS channel center frequency.
- 3, Set the RBW to: 3 kHz  $\leq$  RBW  $\leq$  100 kHz, Set the VBW  $\geq$  3 RBW, Detector = peak. Sweep time = auto couple
- 4, Trace mode = max hold, Allow trace to fully stabilize.

**Note :** The EUT was tested according to KDB 558074 for compliance to FCC 47CFR 15.247 requirements.

### Environmental Conditions

Temperature:	25 °C
Relative Humidity:	55%
ATM Pressure:	100.0kPa

### Applicable Standard

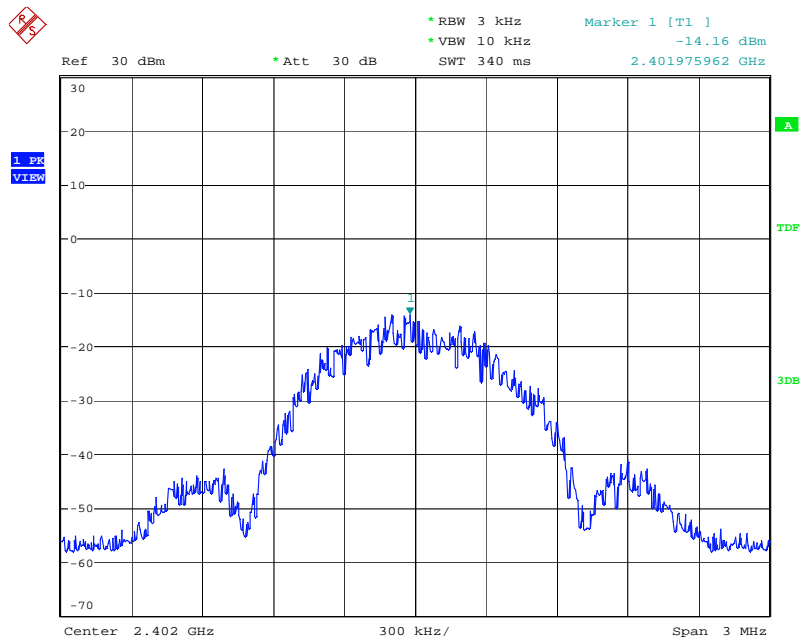
For digitally modulated systems, the power spectral density conducted from the intentional radiator to the antenna shall not be greater than 8 dBm in any 3 kHz band during any time interval of continuous transmission. This power spectral density shall be determined in accordance with the provisions of paragraph (b) of this section. The same method of determining the conducted output power shall be used to determine the power spectral density.

## Test Result

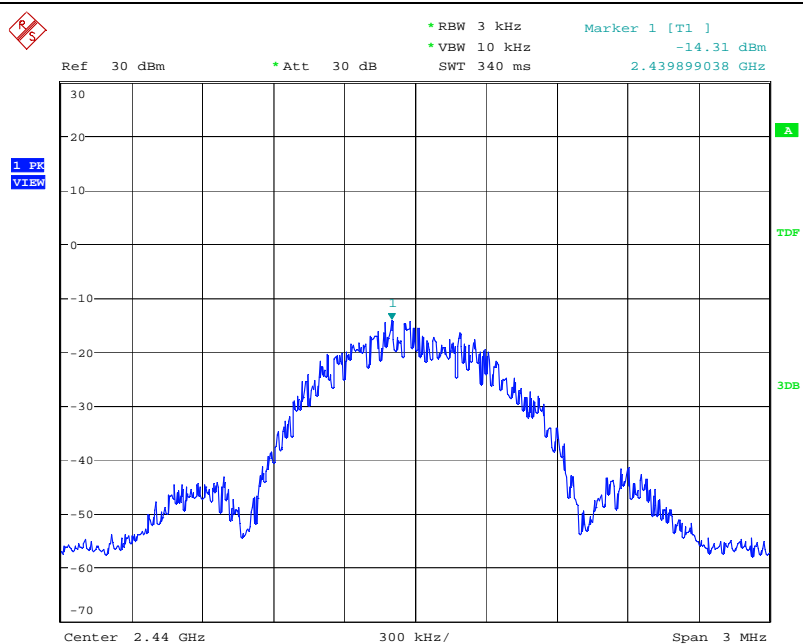
PASS

Channel Frequency (MHz)	Data Rate (Mbps)	PSD (dBm/3kHz)	Limit (dBm/3kHz)	RESULT
2402	1	-14.16	8	Compliant
2440	1	-14.31	8	Compliant
2480	1	-14.46	8	Compliant

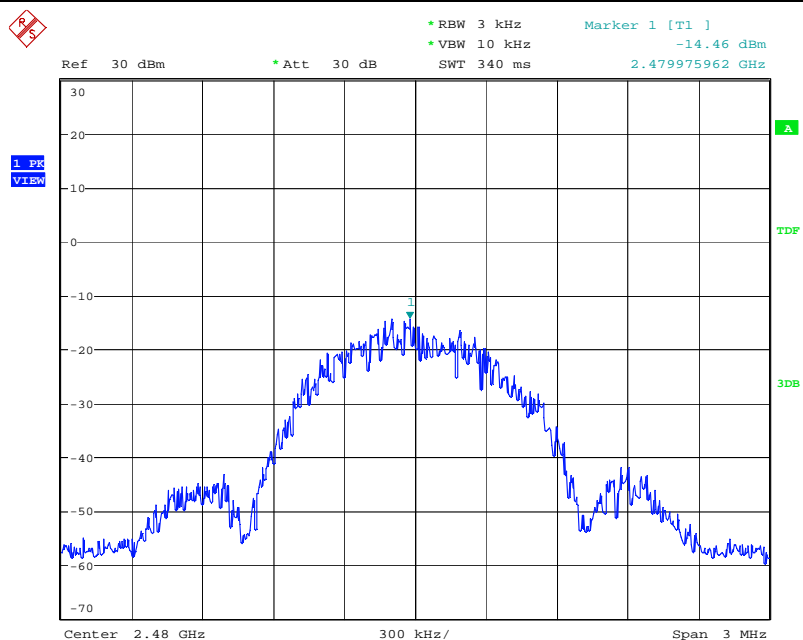
### Low Channel



Date: 20.APR.2017 14:34:54

**Middle Channel**

Date: 20.APR.2017 14:36:00

**High Channel**

Date: 20.APR.2017 14:36:34

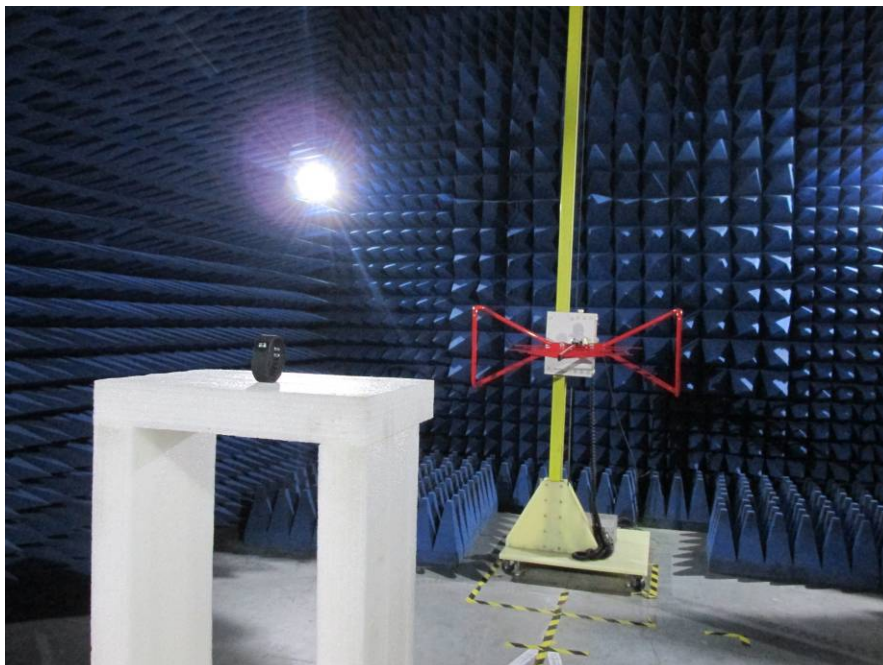
## PHOTOGRAPHS OF THE TEST CONFIGURATION

### CONDUCTED EMISSION TEST



### RADIATED EMISSION TEST

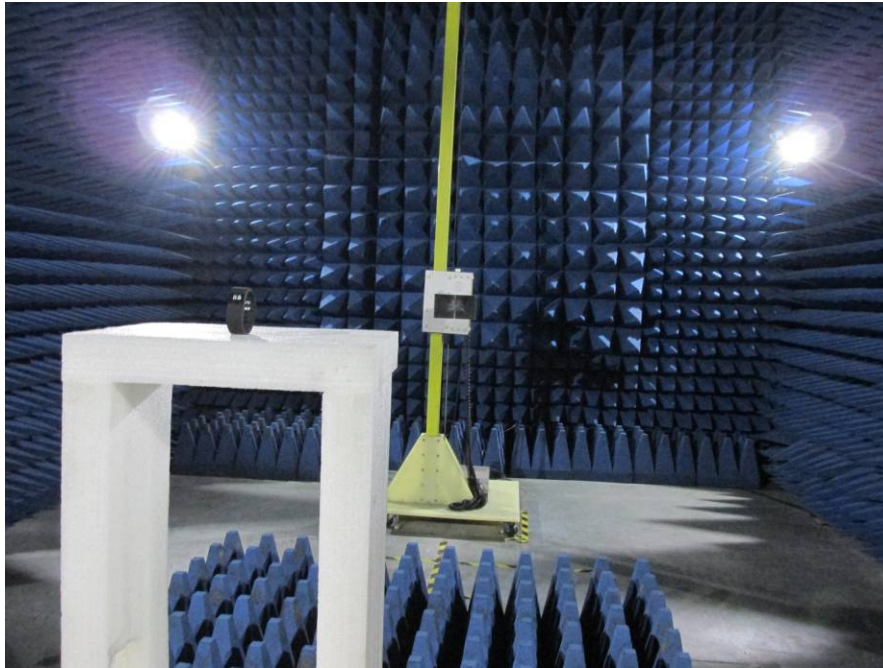
(Frequency from 30MHz to 1GHz)





## **RADIATED EMISSION TEST**

(Frequency above 1GHz)



## PHOTOGRAPHS OF EUT

Appearance photograph of EUT



Appearance photograph of EUT





Appearance photograph of EUT



Appearance photograph of EUT





Appearance photograph of EUT



Appearance photograph of EUT





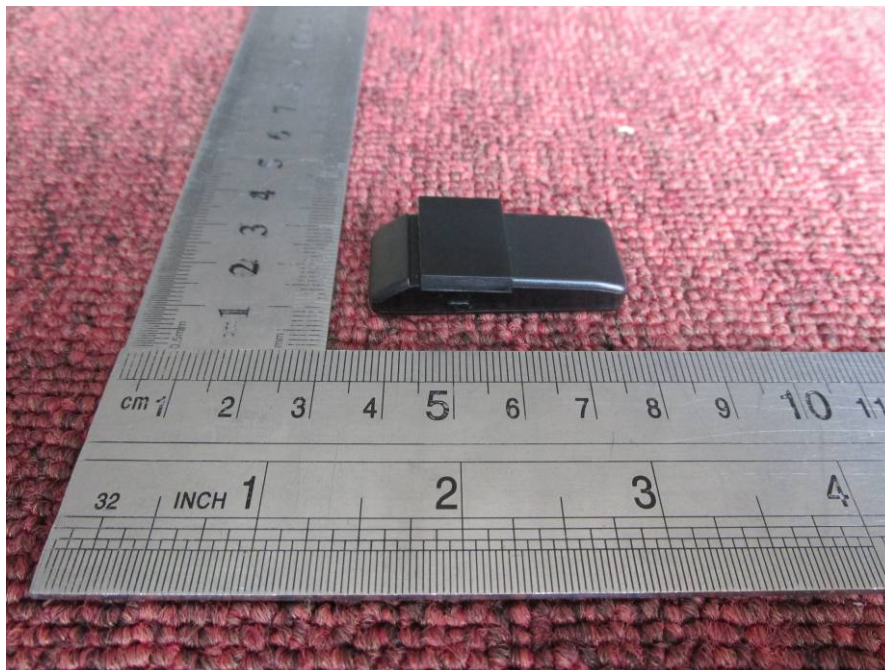
Appearance photograph of EUT



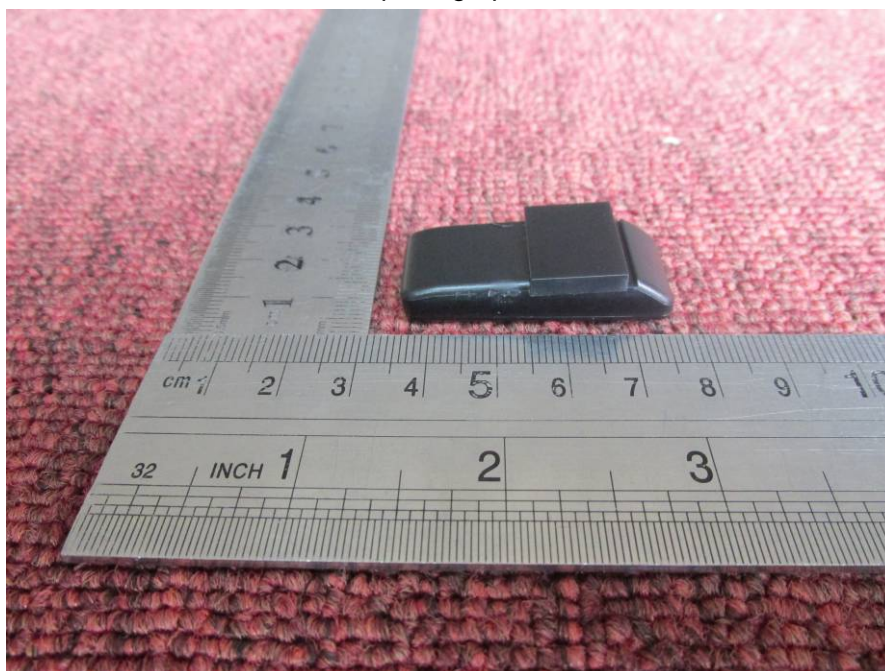
Appearance photograph of EUT



Internal photograph of EUT



Internal photograph of EUT





Internal photograph of EUT



Internal photograph of EUT

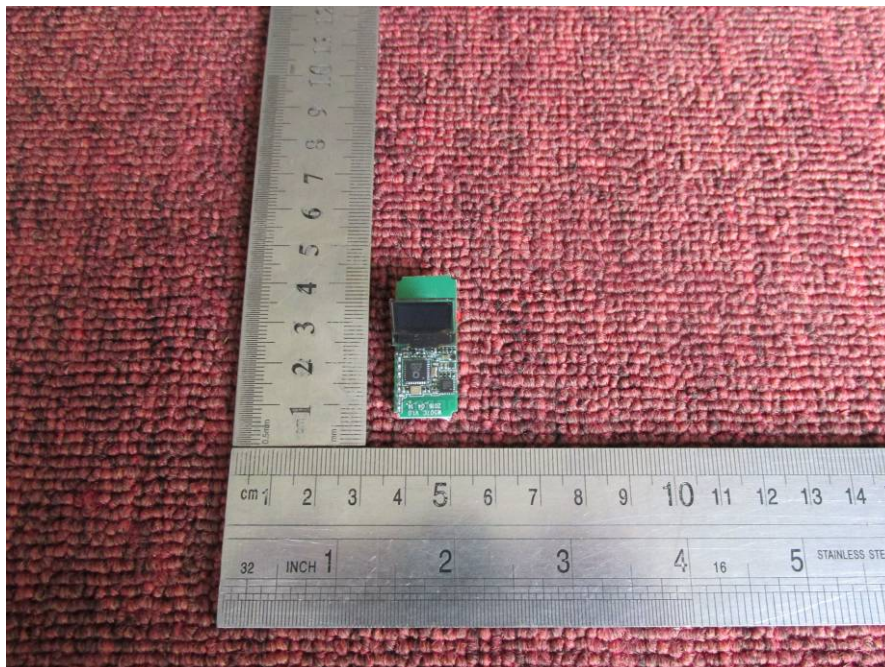




Internal photograph of EUT



Internal photograph of EUT





Internal photograph of EUT



Internal photograph of EUT

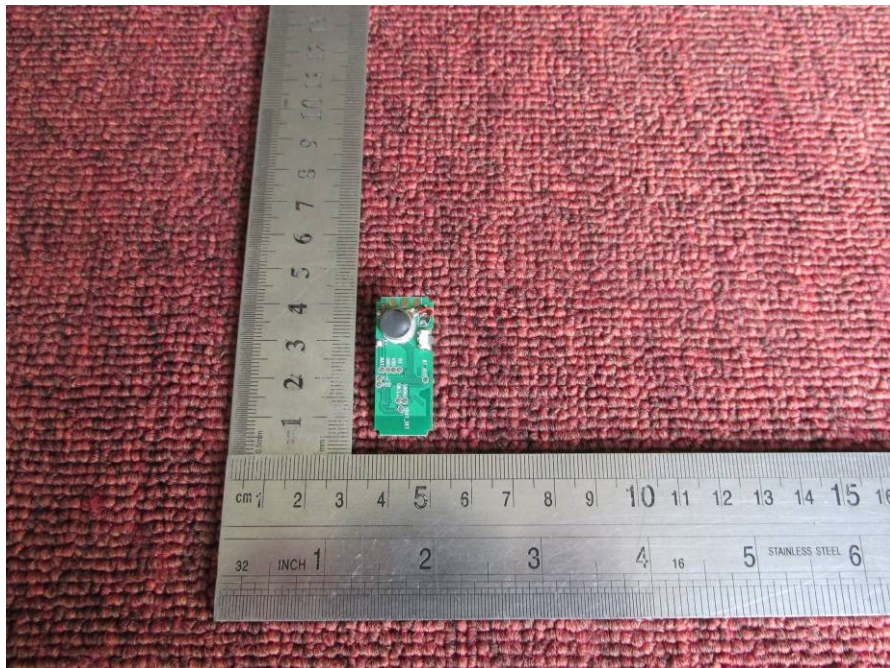


Internal photograph of EUT



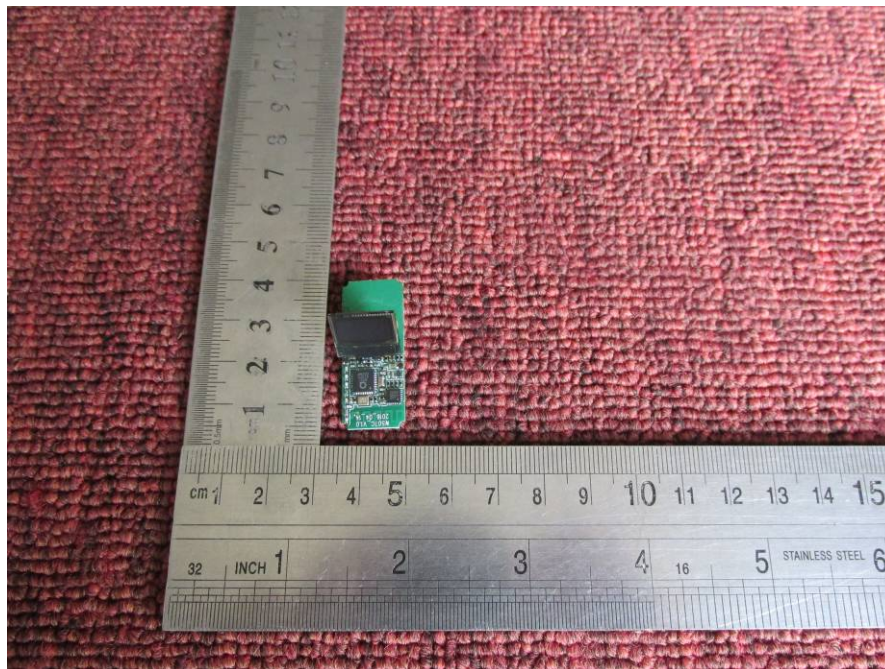


Internal photograph of EUT

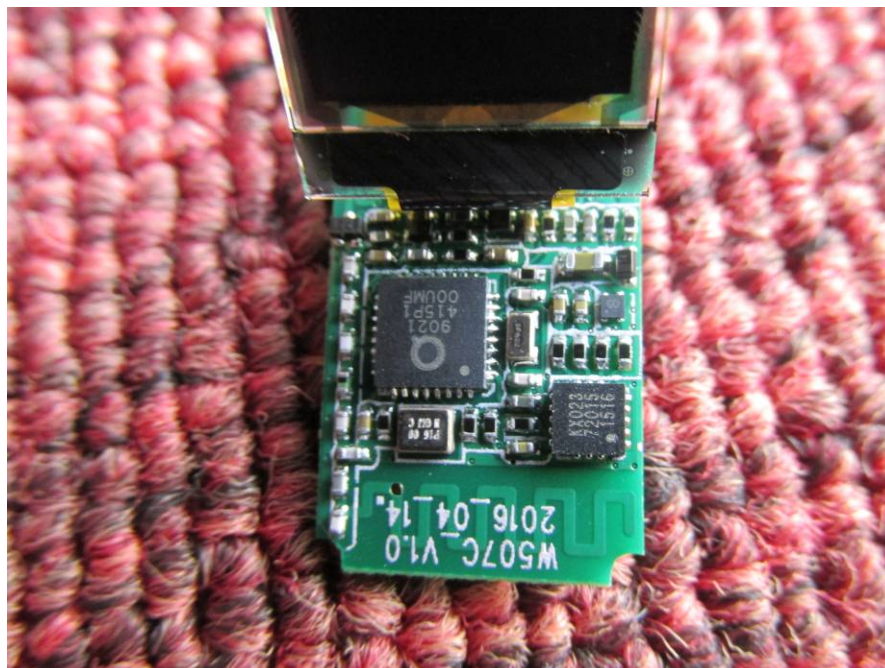




Internal photograph of EUT



Internal photograph of EUT



---END OF REPORT---