

Geekplay ARcher · the Dragonbone

Innovative AR Bow

Geekplay ARcher

The Dragonbone

→ Multiplayer ARchery Toy Based on Augmented Reality ←

Developed by Geekplay, The Dragonbone is a bow-shaped gaming toy working with smartphone apps based on Augmented Reality technology.

Slot your phone in and load up one of the (free) companion apps, and you're off to experience the most interactive games. Enjoy being a hunter in the woods, a dragon slayer in the jungle, or a naughty ninja in a dojo! Your aim is detected by the gyroscope of the Dragonbone, and you fire by pulling and releasing the bowstring.

With AR Bow not only works with smartphone games, but also compatible with TV and iPad, it allows you to play anywhere, anytime, with anyone.



The Dragonbone's Partner Apps

The Dragonbone comes with various gaming apps requiring different tactics and strategies! Currently 3 apps are ready, and 2 coming very soon.

Geekplay JurassicRaid

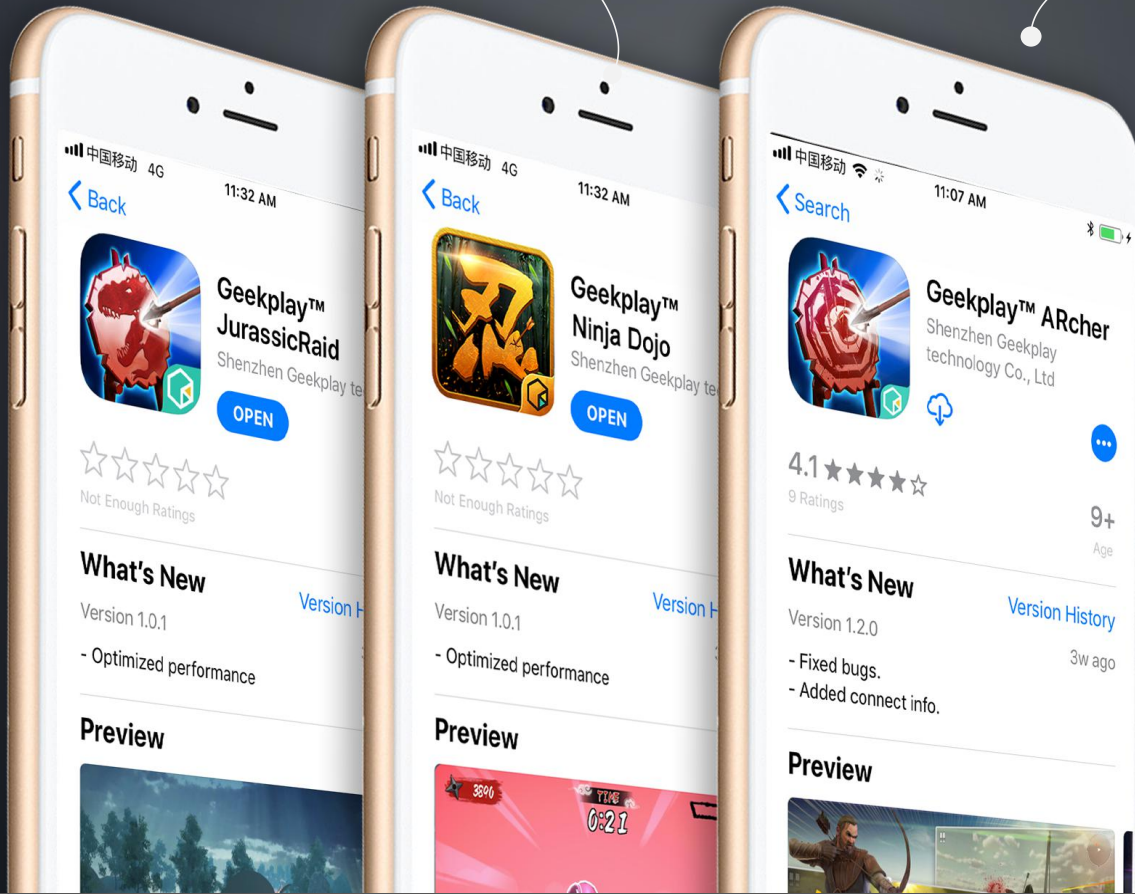
Twenty-five years after the events of Jurassic Park, Jurassic Attack takes place in a deserted jungle....

Geekplay Ninja Dojo

Practise and polish your skills of being a ninja!

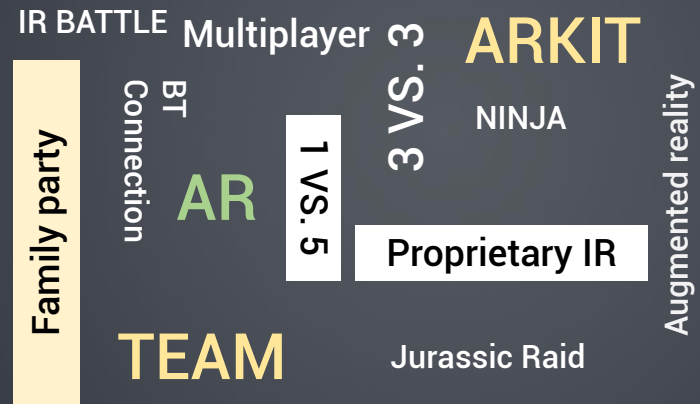
Geekplay ARcher

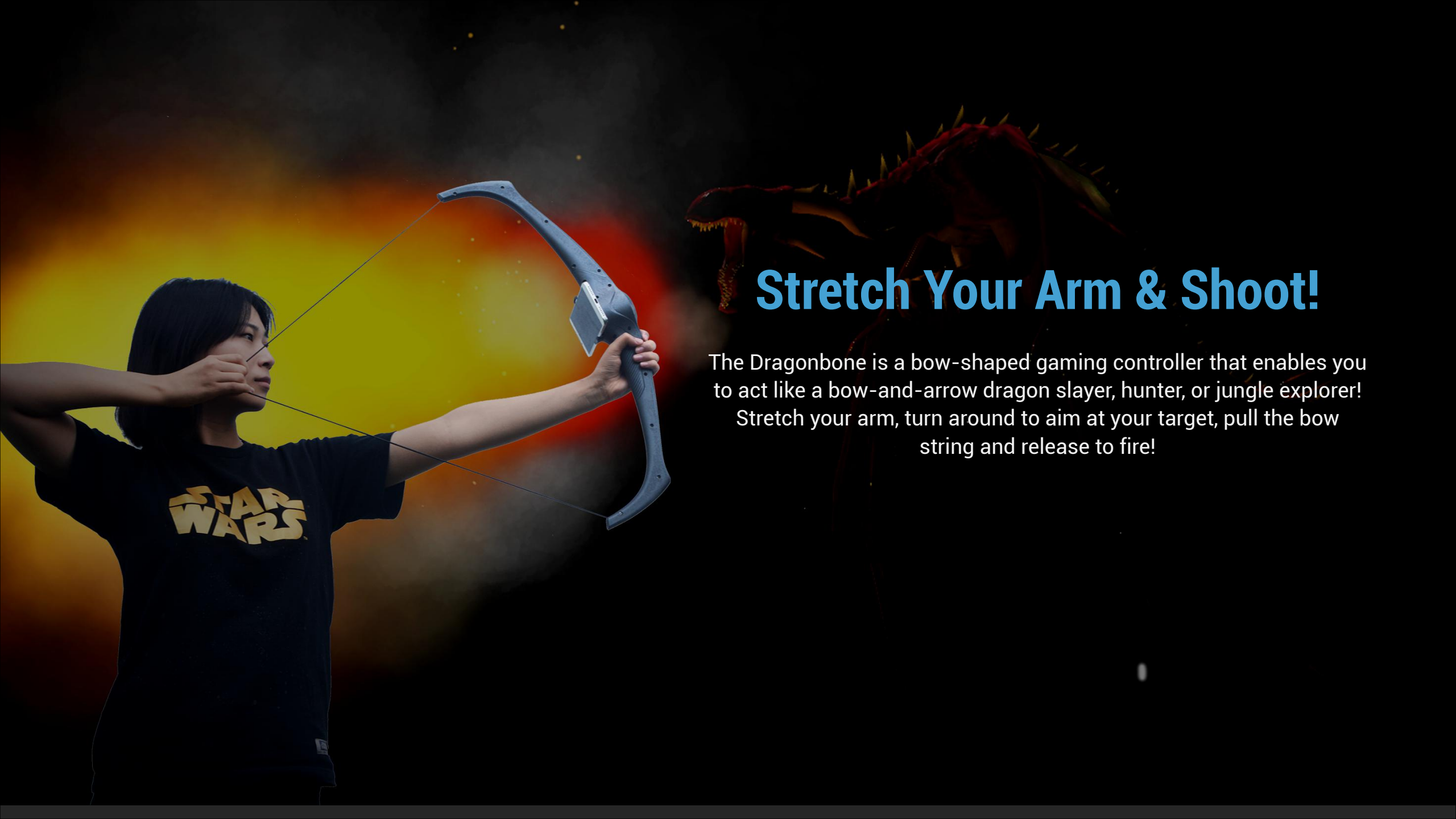
A gaming app that contains 6 different games with different themes: A Storm of Arrows, Dragon Defense, The Walkers, etc.



and more...

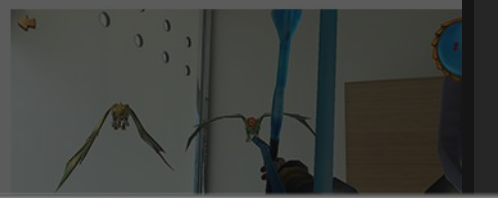
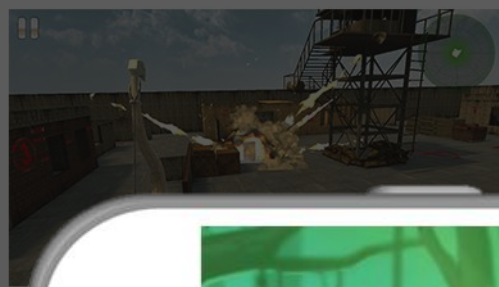
FEATURES





Stretch Your Arm & Shoot!

The Dragonbone is a bow-shaped gaming controller that enables you to act like a bow-and-arrow dragon slayer, hunter, or jungle explorer! Stretch your arm, turn around to aim at your target, pull the bow string and release to fire!



So Many Apps, Games, and So Much Fun!



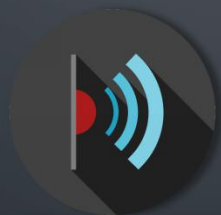
The Dragonbone comes with various gaming apps, each of which brings completely different fun. You can be a dragon slayer, exploring in a deserted jungle and fighting against T-rex; you can be a ninja, practising and polishing you skills of throwing kunai and shuriken; you can be a survivor confronting a herd of walkers by the end of the world!

Multi-player Games

Double, Triple, Quadruple the Fun

The Dragonbone, with its premium IR transmitter & Bluetooth, supports multiplayer games of up to 6 person!
Enjoy bow-and-arrow FPS laser-tag-like game with your friends, family, or colleagues!

IR Add-on



Bluetooth BLE



TV Extension

Bigger Than Bigger

The Dragonbone support playing with TV simply using Wi-Fi in your house. Imagine how breathtaking it would be when a T-Rex marching toward you from that big screen!

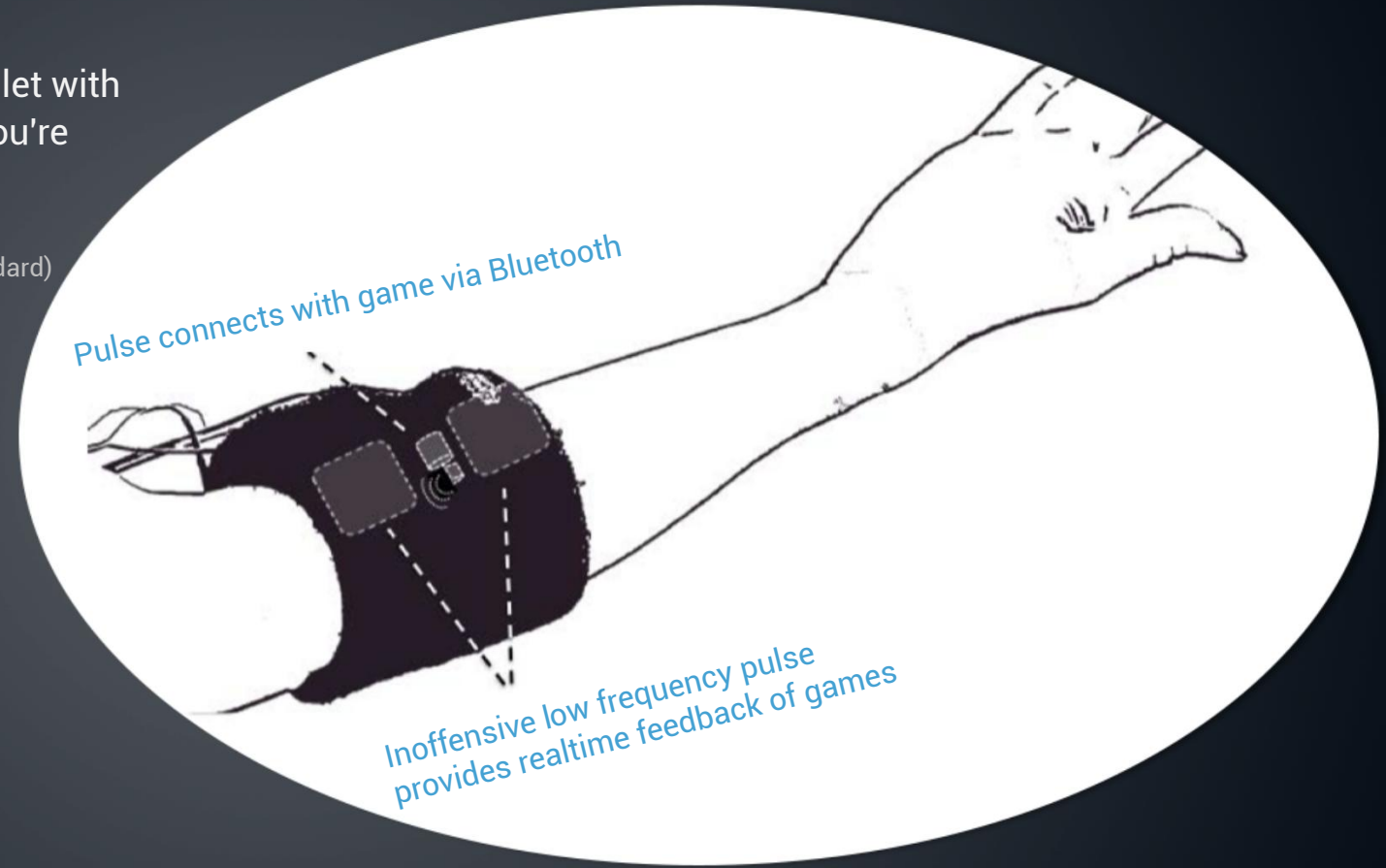


O.M.G

It's So Real!

To bring the most exciting games, we're working on an armlet with built-in low-frequency pulse chipset that activates when you're being attacked in the game.

(The mechanical and electronical pulse we use complies with medical safety standard)



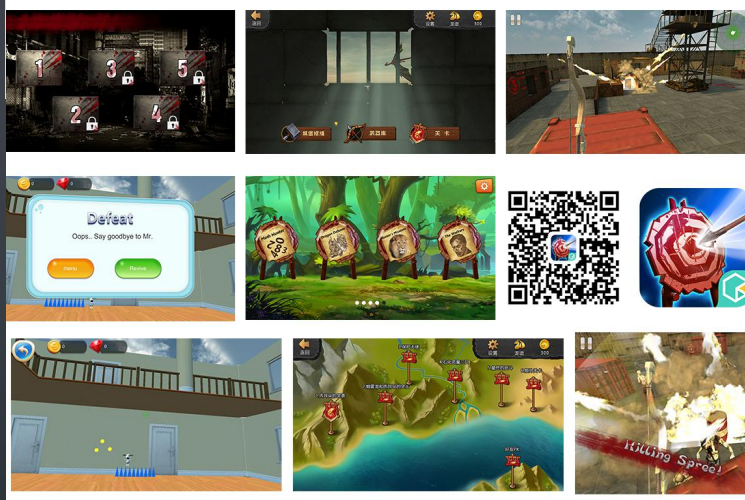
The Most Interactive Toy

Based on AR that uses your life scenery as gaming background;
Bow-and-arrow shooting for innovative interaction



Infinite and Constant Fun

Various free gaming apps for different gameplay;
Apps and games update on a regular basis for constant joy!



Your Party Mascot

Cooperative combat games for team building or family party;
Multiplayer FPS laser-tag like game that is always a good choice when having fun with friends or family.



Product	Geekplay ARcher the Dragonbone
Power Supply	2 x AAA Batteries
Pairing	Bluetooth
Communication	Bluetooth; Infrared
Button(s)	2
Phone Holder Width	52-90mm
Companion Apps	Geekplay ARcher
	Geekplay JurassicRaid
	Geekplay Ninja Dojo
	Geekplay (Available soon)
OS Requirement	Android 4.5 & Above
	iOS 7.0 & Above



Technical Data

THANK YOU

2018 / 11 / 16 from Geekplay



GEEKPLAY

深圳极贝科技有限公司
Shenzhen Geekplay Technolgo Co., Ltd

FCC Warning:

This equipment has been tested and found to comply with the limits for a Class B digital device, pursuant to part 15 of the FCC Rules. These limits are designed to provide reasonable protection against harmful interference in a residential installation. This equipment generates, uses and can radiate radio frequency energy and, if not installed and used in accordance with the instructions, may cause harmful interference to radio communications. However, there is no guarantee that interference will not occur in a particular installation. If this equipment does cause harmful interference to radio or television reception, which can be determined by turning the equipment off and on, the user is encouraged to try to correct the interference by one or more of the following measures:

- Reorient or relocate the receiving antenna.**
- Increase the separation between the equipment and receiver.**
- Connect the equipment into an outlet on a circuit different from that to which the receiver is connected.**
- Consult the dealer or an experienced radio/TV technician for help.**

Caution: Any changes or modifications to this device not explicitly approved by manufacturer could void your authority to operate this equipment.

This device complies with part 15 of the FCC Rules. Operation is subject to the following two conditions: (1) This device may not cause harmful interference, and (2) this device must accept any interference received, including interference that may cause undesired operation.

The device has been evaluated to meet general RF exposure requirement. The device can be used in portable exposure condition without restriction.