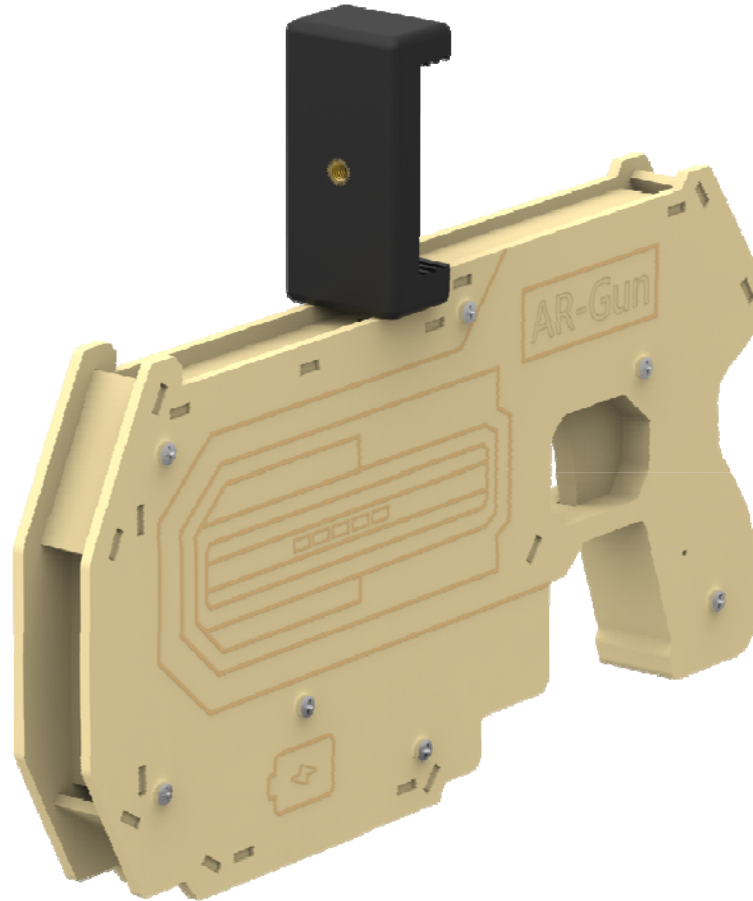


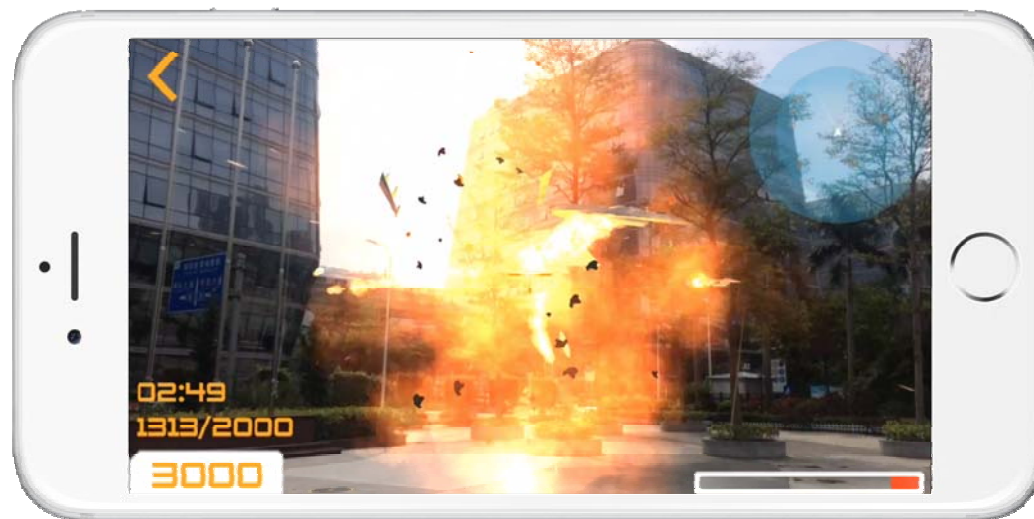
AR Gun – The **Quick Guide**



1

Go to **App store** or **Google Play**

Search for “AR Gun The Guardian”
download the app for the Guardian



2

GET THE GUARDIAN READY

Unscrew the battery cover;

Load 2 x AAA batteries, and close the battery cover;

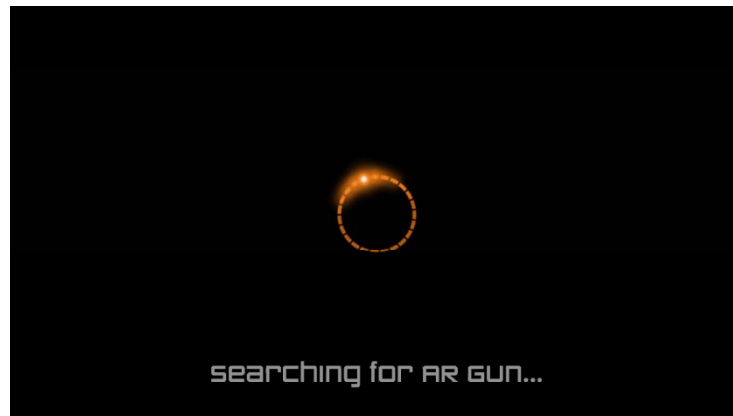
Pull the trigger once to power it on.



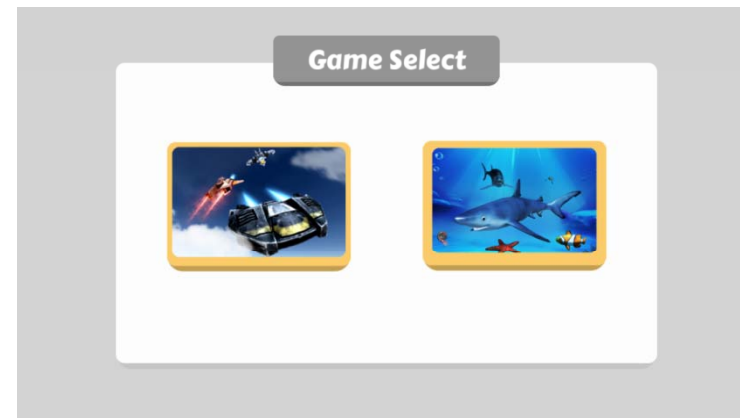
3

CONNECTION

Enable the Bluetooth of your smartphone;
Wait for automatic connection.



Waiting for Connection

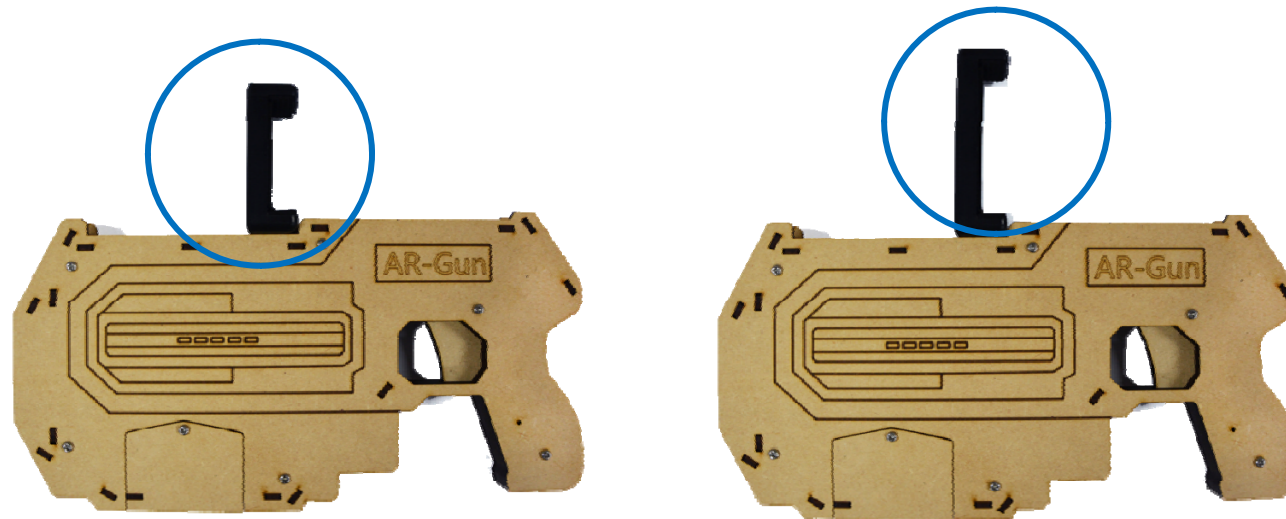


Main Interface (Connected)

4

PHONE INSTALLATION

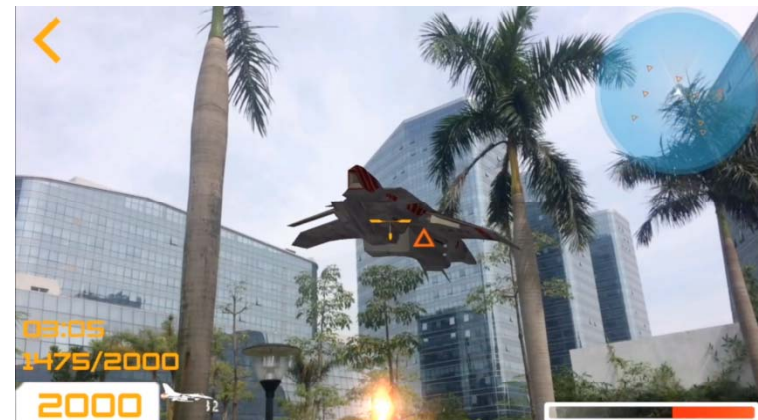
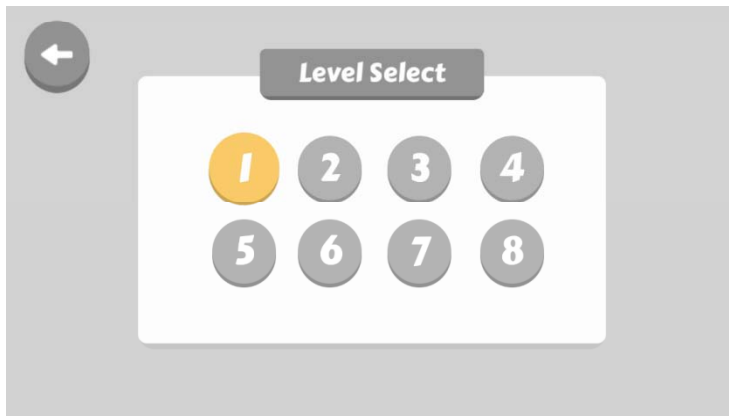
Pull open the phone holder to fit your smartphone in.



5

LET THE GAME BEGIN

Choose the difficulty level from 1 to 8 by tapping on the screen;
Use the smartphone's screen as monitor and shoot by pulling trigger.



Precaution

- To reduce the risk of damage or injury, do not attempt to disassemble the shell unless with technical assistance
- Do not place the Guardian near any heat sources
- Remove batteries when the Guardian will not be used for a long time

Warranty

This product is warranted against defects in materials and workmanship under normal use by the original purchaser for 30 days after the date of purchase from an authorized retailer. THERE ARE NO OTHER EXPRESS WARRANTIES.

EXCLUSIONS AND LIMITATIONS

This warranty does not cover: (a) damage or failure caused by or attributable to abuse, misuse, failure to follow instructions, improper installation or maintenance, alteration, accident, Acts of God (such as floods or lightning), or excess voltage or current; (b) improper or incorrectly performed repairs by non-authorized service facilities; (c) consumables such as fuses or batteries; (d) ordinary wear and tear or cosmetic damage; (e) transportation, shipping or insurance costs; (f) costs of product removal, installation, set-up service, adjustment or reinstallation; (g) claims by persons other than the original purchaser; and (h) 2nd hand purchase or purchase from a non-authorized seller/distributor

Support

For any inquiries or comment concerning our products, please contact us at support@chloroplast.cc. If you have an order number, please include it as reference. We will try to respond to your inquiry as fast as possible.

This device complies with part 15 of the FCC Rules. Operation is subject to the following two conditions: (1) This device may not cause harmful interference, and (2) this device must accept any interference received, including interference that may cause undesired operation.

NOTE: This equipment has been tested and found to comply with the limits for a Class B digital device, pursuant to Part 15 of the FCC Rules. These limits are designed to provide reasonable protection against harmful interference in a residential installation. This equipment generates, uses and can radiate radio frequency energy and, if not installed and used in accordance with the instructions, may cause harmful interference to radio communications. However, there is no guarantee that interference will not occur in a particular installation. If this equipment does cause harmful interference to radio or television reception, which can be determined by turning the equipment off and on, the user is encouraged to try to correct the interference by one or more of the following measures:

- Reorient or relocate the receiving antenna.
- Increase the separation between the equipment and receiver.
- Connect the equipment into an outlet on a circuit different from that to which the receiver is connected.
- Consult the dealer or an experienced radio/TV technician for help.

Note: The manufacturer is not responsible for any radio or TV interference caused by unauthorized modifications to this equipment. such modifications could void the user's authority to operate this equipment

Changes or modifications not expressly approved by the party responsible for compliance could void the user's authority to operate the equipment.

The device has been evaluated to meet general RF exposure requirement. The device can be used in portable exposure condition without restriction.