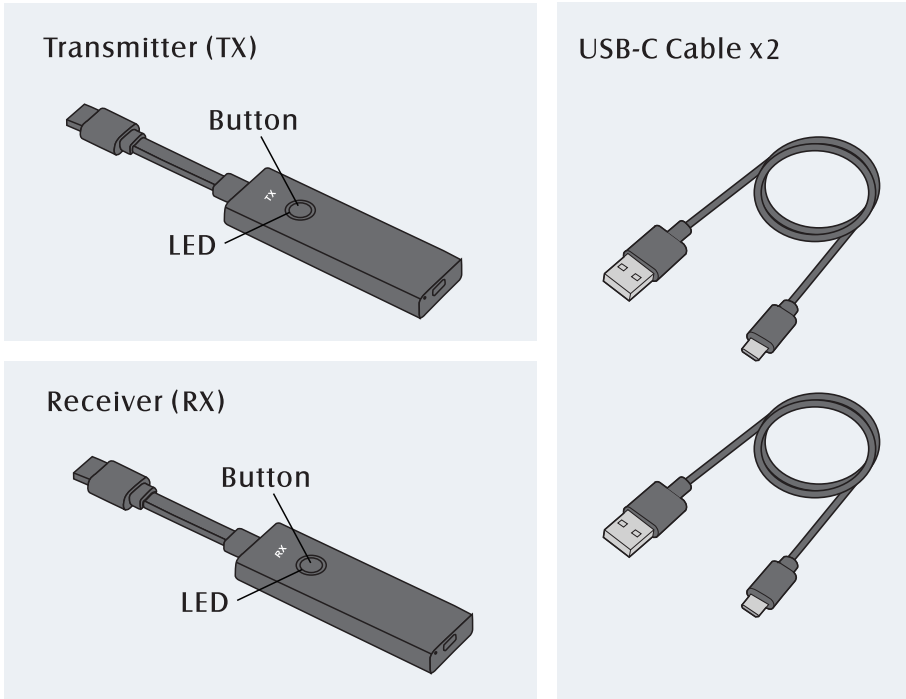
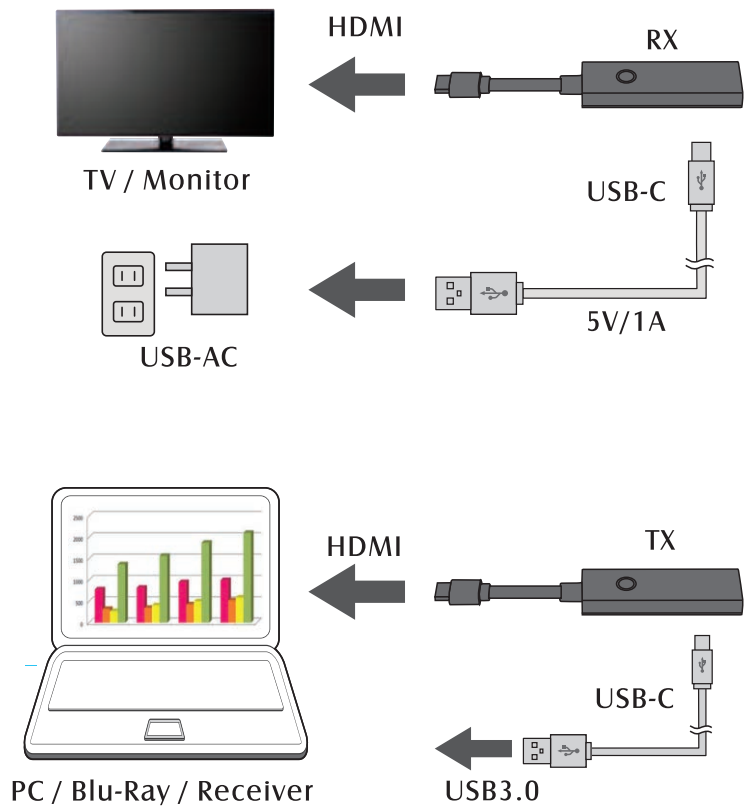


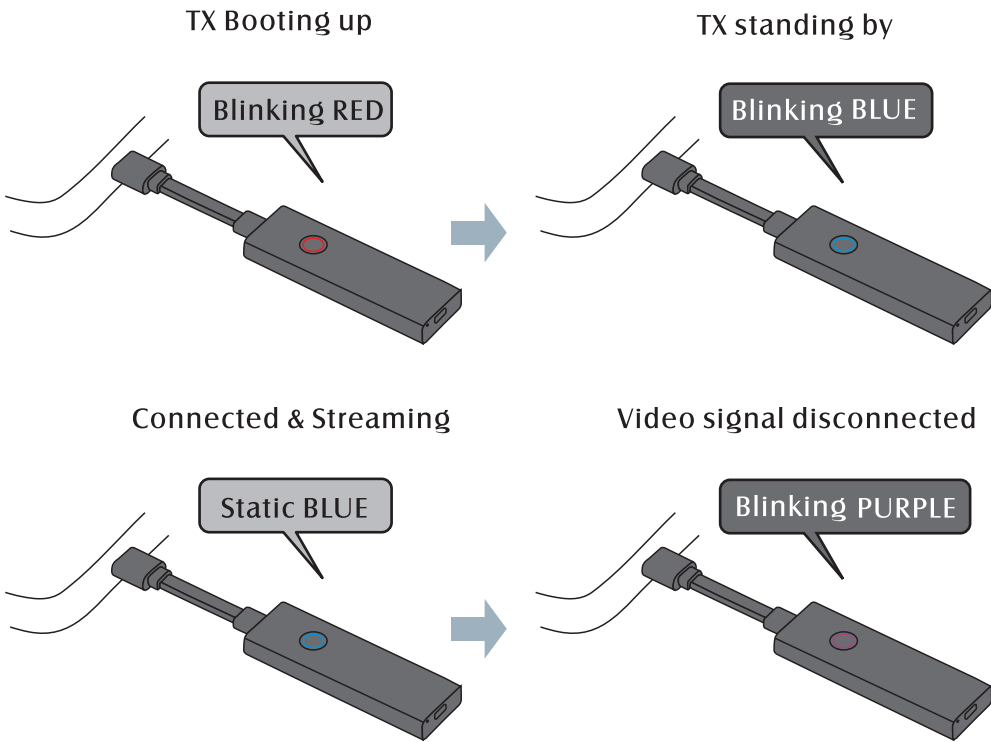
1 Product & Accessories



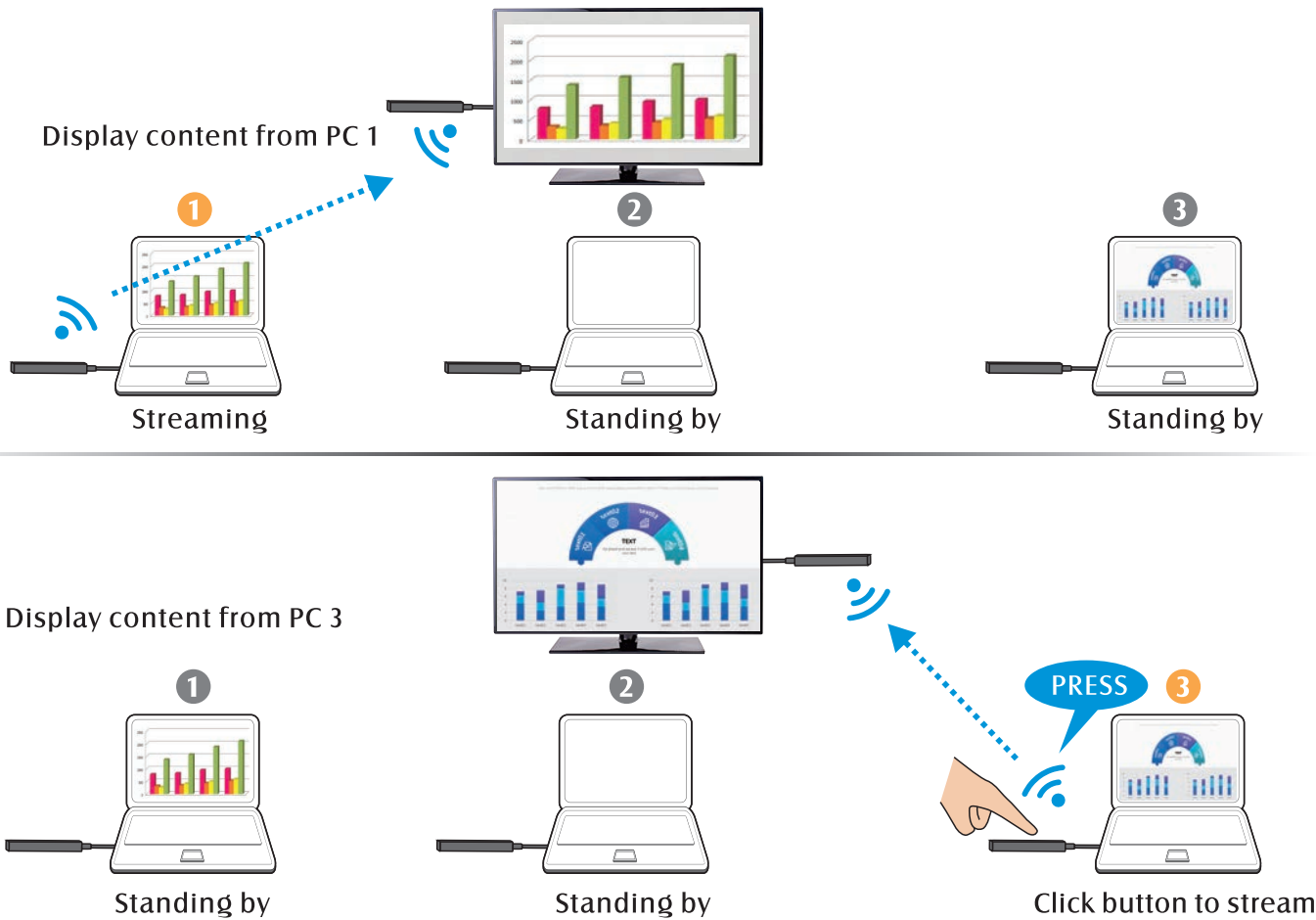
2 Connect TX & RX



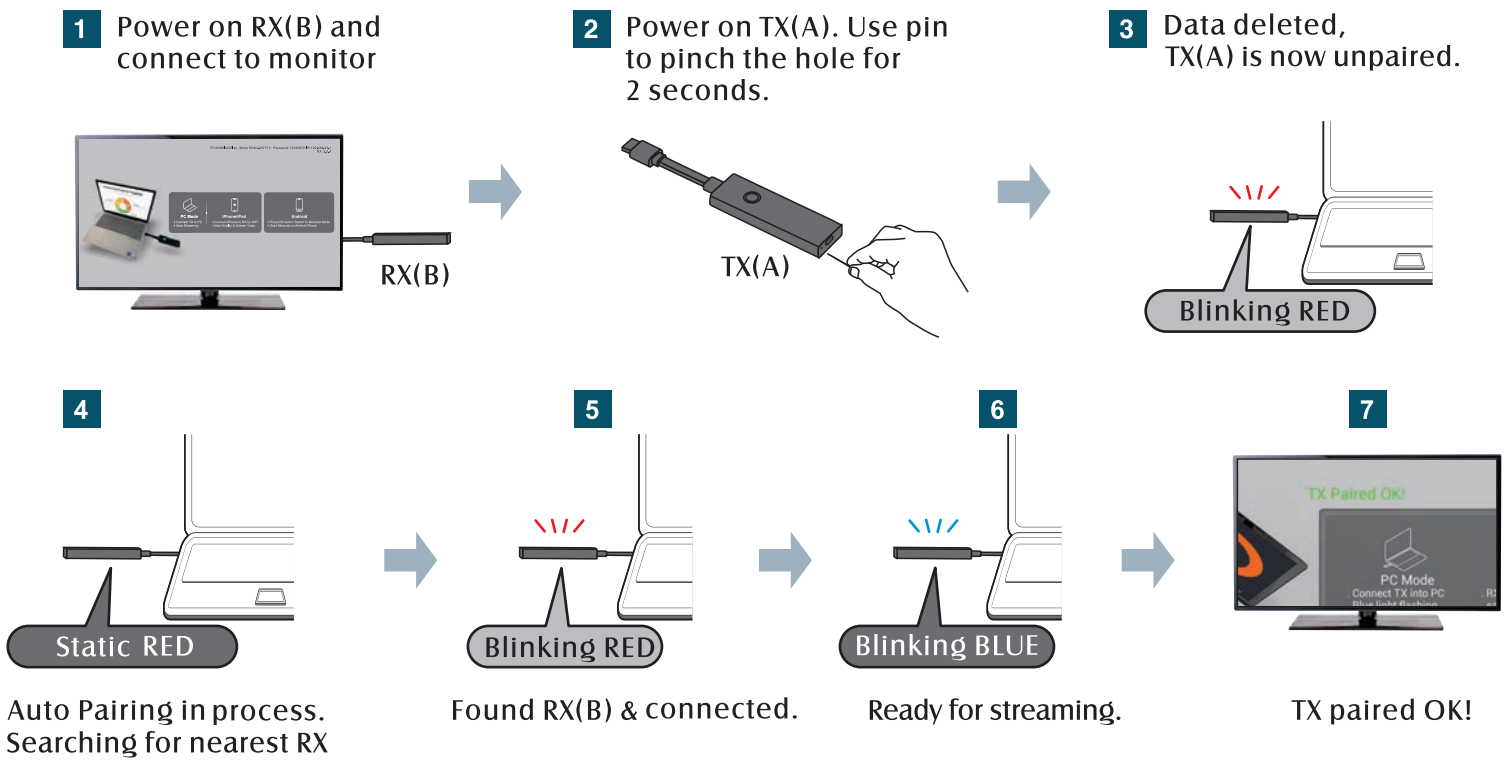
3 LED Status



4 Switch between multiple TXs



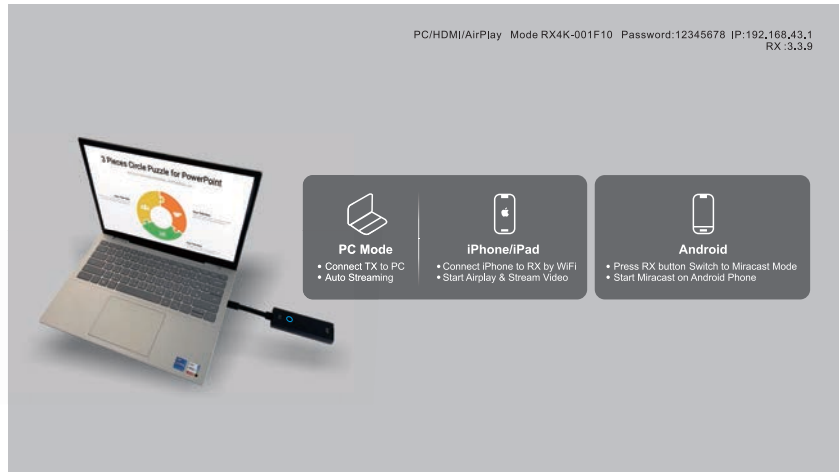
5 How to unpair TX(A) from RX(A) and pair TX(A) to RX(B)



6

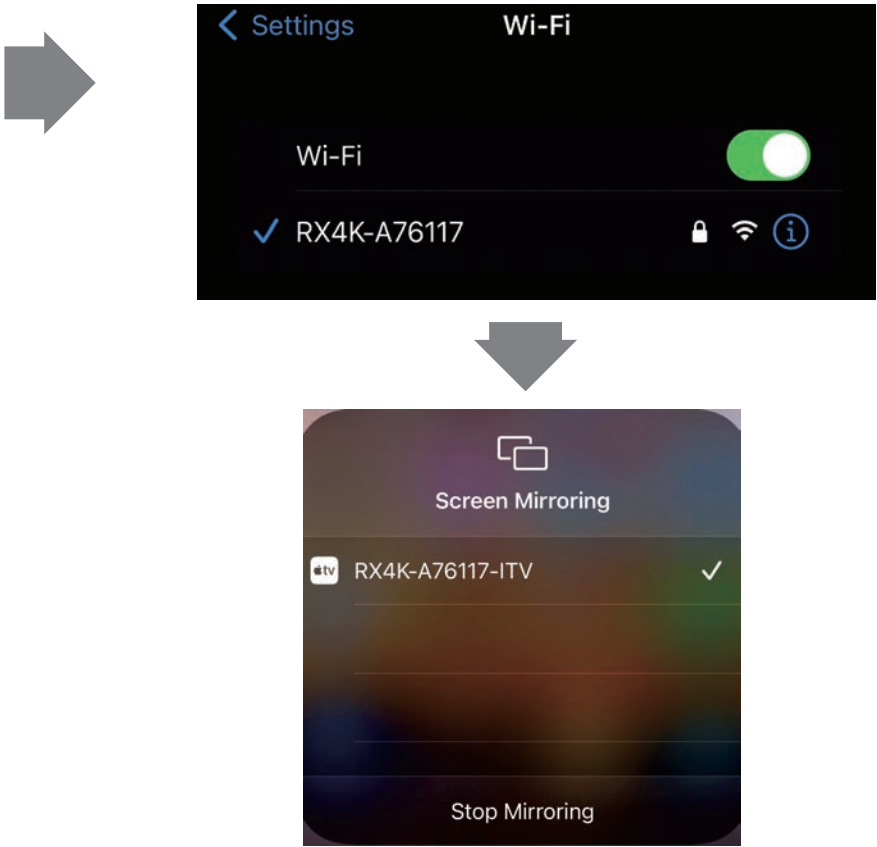
Stream from iPhone / iPad

- 1. Turn on RX and connect to TV / Monitor
- 2. Make sure RX screen on PC / Phone Mode (default)



RX screen in stand-by mode

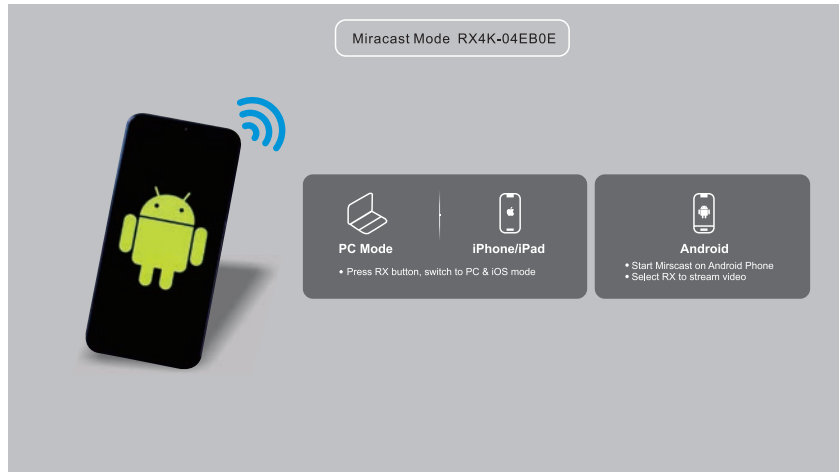
- 2. Connect iPhone/iPad to RX by WiFi (SSID: RXxxxxx, Password: 12345678) Open Screen Mirroing to start streaming



8

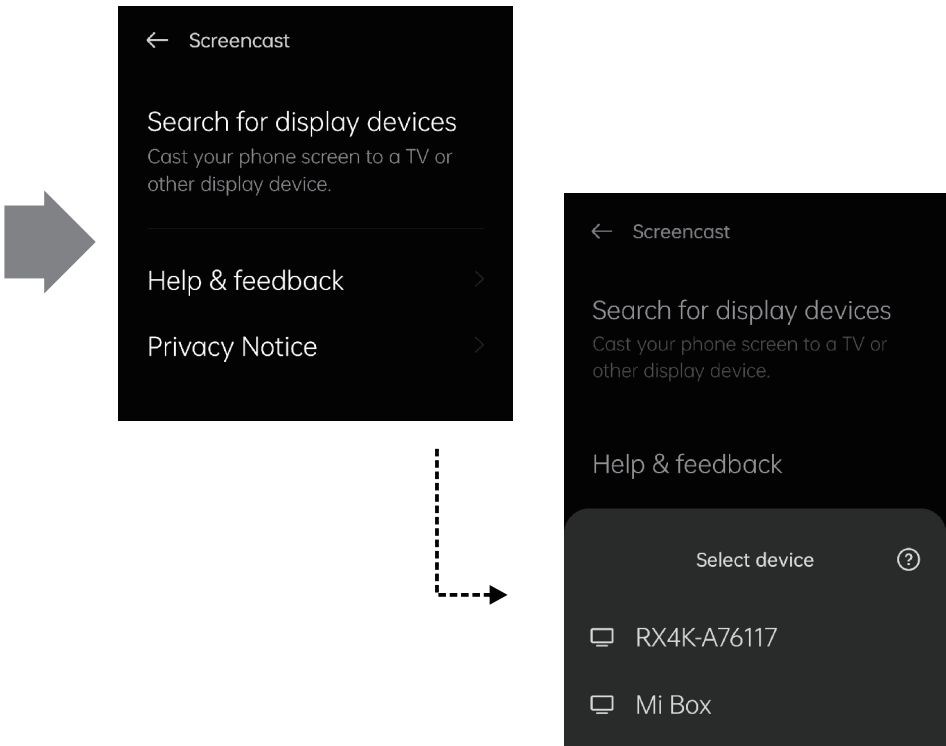
Stream from Android

- 1. Turn on RX and connect to TV / Monitor
- 2. Click button to switch Miracast Mode.



RX screen in stand-by mode

- 2. Open Miracast on Android Phone

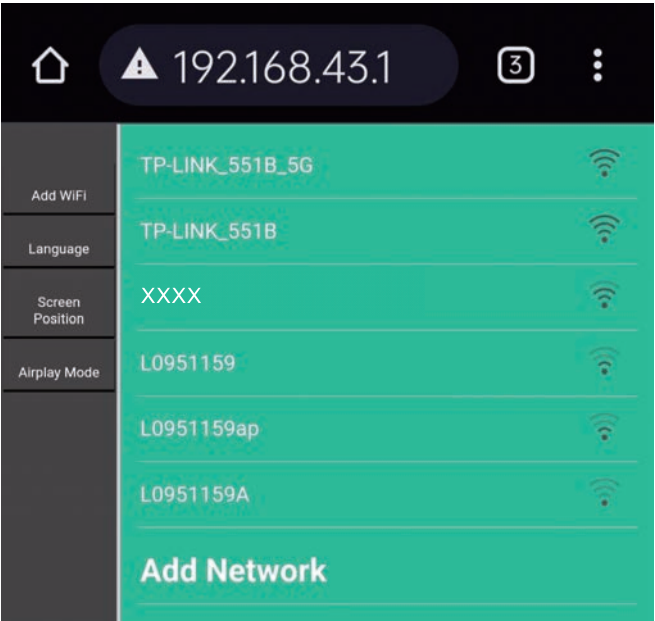


\* Miracast expressed differently on phone brands: WiFi Display, Screen Mirroring, Screencast

7

How to connect WiFi Router

- Open the browser on your phone, input IP address shown on the top-right corner of RX screen. Select the WiFi network, and the SSID will show on the RX screen once completed.



After RX connected to router, re-connect your phone to same router for internet or 4G/5G data service will be used.

9

Product Specification

Features		Description
Video input		Up to 4K30
Video output		Up to 4K60
Audio		Stereo, 16bits 48KHz
Wireless Protocol		IEEE 802.11ac, 5GHz
Latency		Around 100ms
HDMI / HDCP		HDMI 2.0 with HDCP2.2
Authentication Protocol		WPA2 (WPA-PSK / WPA2-Enterprise)
Security		AES 128 bit
Distance		Up to 50 meters (clear line of sight)
TX	Interface	HDMI In (1.4), USB-C
	LED	Red, Blue & Purple
	Power supply	DC 5V/1A with normal power adapter Support 5V3A , 9V3A , 12V3A, 15V3A, 20V3A
	Power consumption	USB PD3.0 adapter About 5W with normal power adapter Max 60W with USB PD3.0 adapter
	Dimension	192.5x36.6x15.2mm
RX	Weight	58g
	Interface	HDMI Out (2.0), USB-C
	LED	Blue
	Power supply	DC 5V/1A
	Power consumption	About 5W
RX	Dimension	192.5x36.6x15.2mm
	Weight	58g

**Warning:**

This device complies with Part 15 of the FCC Rules. Operation is subject to the following two conditions:

(1) this device may not cause harmful interference, and

(2) this device must accept any interference received, including interference that may cause undesired operation.

Changes or modifications not expressly approved by the party responsible for compliance could void the user's authority to operate the equipment.

NOTE: This equipment has been tested and found to comply with the limits for a Class B digital device, pursuant to Part 15 of the FCC Rules. These limits are designed to provide reasonable protection against harmful interference in a residential installation.

This equipment generates uses and can radiate radio frequency energy and, if not installed and used in accordance with the instructions, may cause harmful interference to radio communications. However, there is no guarantee that interference will not occur in a particular installation. If this equipment does cause harmful interference to radio or television reception, which can be determined by turning the equipment off and on, the user is encouraged to try to correct the interference by one or more of the following measures:

- Reorient or relocate the receiving antenna.
- Increase the separation between the equipment and receiver.
- Connect the equipment into an outlet on a circuit different from that to which the receiver is connected.
- Consult the dealer or an experienced radio/TV technician for help.

**SAR statement(Transmitter)**

This device meets the government's requirements for exposure to radio waves. This device is designed and manufactured not to exceed the emission limits for exposure to radio frequency (RF) energy set by the Federal Communications Commission of the U.S. Government. The SAR limit set by the FCC is 1.6W/Kg.

For body-worn operation, this device has been tested and meets the FCC RF exposure guidelines for use with an accessory that contains no metal and positions the device a minimum of 0mm from the body. RF exposure compliance with any body-worn accessory that contains metal was not tested and certified. and use of such body-worn accessory should be avoided. Accessory available in market and must be used to keep use distance 0mm from EUT to body-worn operation.

**RF Exposure Statement (Receiver)**

To maintain compliance with FCC’s RF Exposure guidelines, This equipment should be installed and operated with minimum distance of 20cm the radiator your body. This device and its antenna(s) must not be co-located or operation in conjunction with any other antenna or transmitter.