

Selfie Robot

User's Manual

ZW-SR04



Your personal photographer Free your hands
auto taking photos Recording beautiful moments!

INCLUDED ITEMS

- Selfie robot
- USB cable
- Manual
- Bluetooth remote control

PRODUCT INTRODUCTION

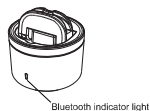
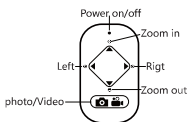
LED Indicator Light

Power indicator light

- Power on the device: Green LED light will be long time on.
- Charging the device: Red LED light will be on and then turn green when the battery is full.

Bluetooth indicator light

- Power below 40%: Red LED light will be long time on
- Power over 40%: Blue LED light will be long time on
- Pairing status: Blue LED light blink
- Pairing success: Blue LED light long time on

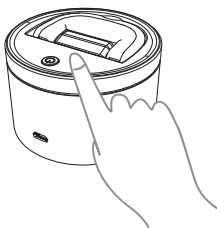


Power on / off
indicator light



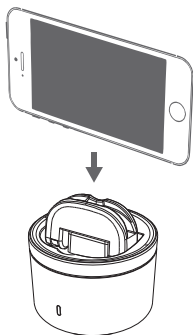
HOW TO START

1. Press the power button to turn on the selfie robot



2. Turn on the bluetooth of your smartphone

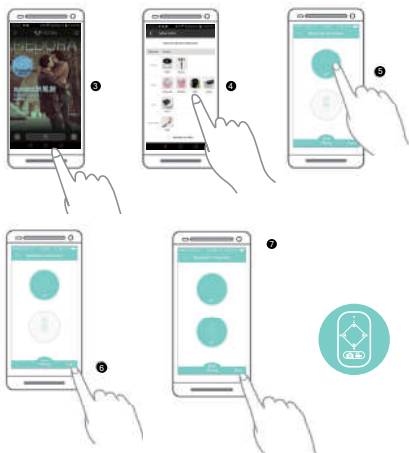




DOWNLOAD THE APP

Find "Fiedora" on APP Store or Google Play to download the App.

3. Tap App from the Smartphone and press the Selfie Robot, please refer to pic 3.
4. Select "SR04" and then tap "Remember my choice" to be the default settings for the Selfie Robot. Please refer to pic 4.

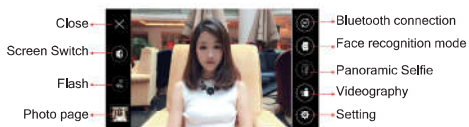


*Friendly Reminder: Don not lock the screen orientation when using the App.

5. Tap App from Smartphone and Choose "Bluetooth remote control" and "Selfie Robot" to establish connection. Please refer to pic 5-7.

THE APP INTRODUCTION

1. Overall

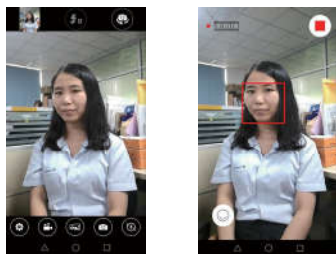




2. Selfie with automatic face recognition



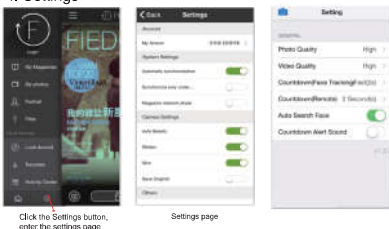


3. Video tracking with automatic face recognition



Press button  to go into the video tracking status and then press button  to enjoy the face video tracking.

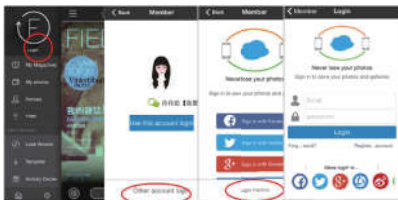
4. Settings



There are many choices for users to get different functions in settings, such as the quality of the pictures/videos, when it comes to countdown function for face tracking, we provide different speed Fast(2 seconds)/Normal (3 seconds)/ Slow(5 seconds) to control it. Tracking face can be set on or off.



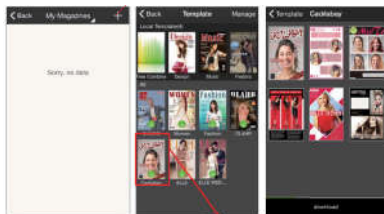
5. Member Login



When you are login, all photoes will be saved and stored in the cloud, so these is no need to worry about losing photoes

6. Create Your Own Magazine

Click "+" button to manage your own magazine. You can choose the local magazine from the magazine template or download your favourite magazine from the website.



Choose your favourite magazine template and download

Click "use", enter
your phone gallery



Select a photo from
your gallery, then
click "Next".



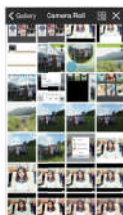
Click the circle part
and edit the photo.



In edit page, choose your
favourite magazine template
and zoom in/out or rotation
your photo as you want.



Replace image



Single click the magazin
picture, shows below steps.

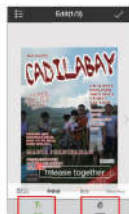
Portrait



Add text

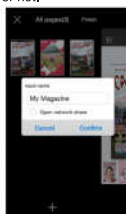


Move the location,
change the font and
color at edit screen.



Name this magazine,
there is a choice for
you to decide to share
it to the open network
or not.

Click Finish



Complete "My Magazine"
as shown below.



Page 2
For "My Magazine"



Page 3
For "My Magazine"



My Magazines



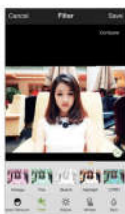
7. Filters

Enter the "Filter" Option on the home page, select one photo to do the facial beautification.

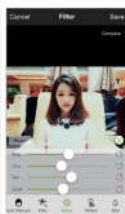




Auto Retouch



Filter



Adjust



Whiten



Skin



Others

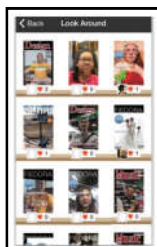


Save



Share

8. Look Around



This is a personal magazine page, Simply open the magazine and choose to share it or not. It is more interactive than ever under the help of online social network sharing.

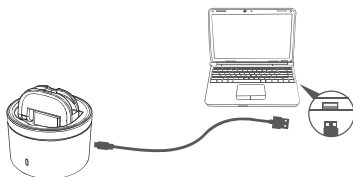
9. Template



Available for users to download and manage the magazine templates

CHARGE THE ROBOT

1. Charge with a computer



2. Charge with USB adapter



SPECIFICATIONS

Mobile Weight Support :	Max 200g
Mobile Interface Support:	Max thickness of 7.9mm
Horizontal Rotate:	360 degree
Tripod Size Support:	1/4 inch standard tripod
Operating/Store Temperature:	(5℃-40℃) (5℃ -50℃)
Phone Panel Size Support:	Max 5.5 inch
Product Size:	48mm (height) X 75mm (diameter)
Battery:	Rechargeable NIMH 800mAh battery (Selfie Robot only)
Bluetooth Version:	4.0 and above
Operation Range:	10 meters
Language Support:	English/German/French/Spanish/Korean/Japanese/Chinese
Mobile System Required:	Android 4.3 and Above/ IOS 7.0 and above

This equipment has been tested and found to comply with the limits for a Class B digital device, pursuant to part 15 of the FCC Rules. These limits are designed to provide reasonable protection against harmful interference in a residential installation. This equipment generates, uses and can radiate radio frequency energy and, if not installed and used in accordance with the instructions, may cause harmful interference to radio communications.

However, there is no guarantee that interference will not occur in a particular installation. If this equipment does cause harmful interference to radio or television reception, which can be determined by turning the equipment off and on, the user is encouraged to try to correct the interference by one or more of the following measures:

- Reorient or relocate the receiving antenna.
- Increase the separation between the equipment and receiver.
- Connect the equipment into an outlet on a circuit different from that to which the receiver is connected.
- Consult the dealer or an experienced radio/TV technician for help.

Caution: Any changes or modifications to this device not explicitly approved by manufacturer could void your authority to operate this equipment.

This device complies with part 15 of the FCC Rules. Operation is subject to the following two conditions: (1) This device may not cause harmful interference, and (2) this device must accept any interference received, including interference that may cause undesired operation.

The device has been evaluated to meet general RF exposure requirement. The device can be used in portable exposure condition without restriction.